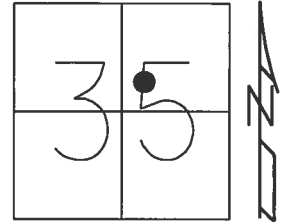


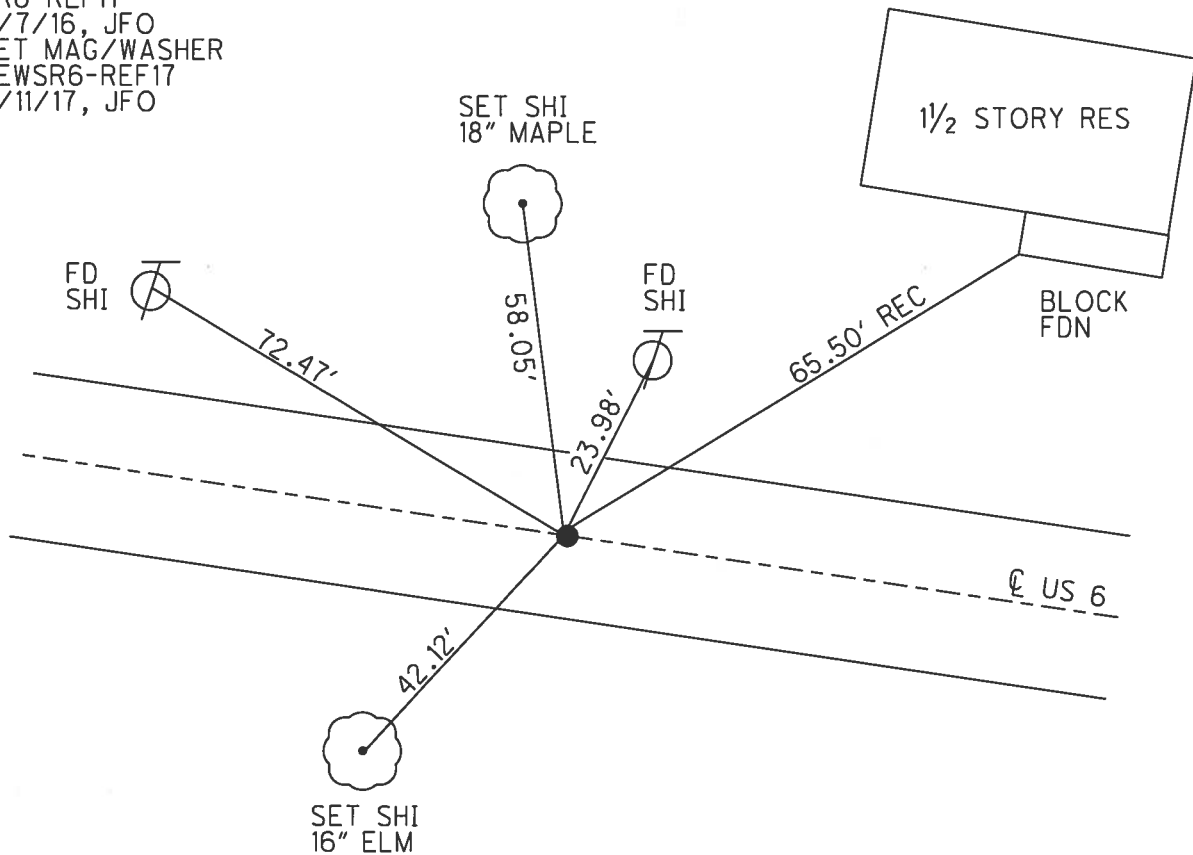
O.D.O.T. DISTRICT 2 SURVEY OFFICE (USE ONLY)

PERSONNEL _____ REFERENCE NO. 17 SHEET 8 OF 37
 NOTES POORE DATE 5/17/17 ROUTE US 6
 H.C. LEU WEATHER CLOUDY COUNTY HENRY
 R.C. CARSON TEMP. 74° TOWNSHIP RIDGEVILLE
HOMAN SECTION 35
RHOADES T 6 N R 5 E

TYPE MONUMENT MAG/WASHER
 ON SURFACE - ~~BELOW~~ ON
~~LEFT~~ - ℄ PAV'T - RIGHT 0.5'
11.1' TO RT EDGE PAVEMENT
 S.L.M. 242+10.25
 Grid: Northing: 650002.626 Easting: 1487438.511



RECORD: P.O.T.
 STA. 241+90.63
 FD LG.R.R.SPIKE
 4" DOWN
 8/30/00, MB
 SET P.K./WASHER
 10/23/00, MDB
 SET MAG/WASHER
 SR6-REF17
 3/7/16, JFO
 SET MAG/WASHER
 NEWSR6-REF17
 9/11/17, JFO



O.D.O.T. DISTRICT 2 SURVEY OFFICE

PERSONNEL

REFERENCE NO. 17

SHEET 7 OF 35

NOTES BARNHISEL

H.C. MOSEK

DATE 8-30-00

ROUTE US 6

R.C. CANTERBURY

WEATHER SUNNY

COUNTY HENRY

TEMP. +85°

TOWNSHIP RIDGEVILLE

SECTION 35

T 6 N R 5 E

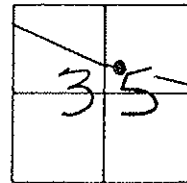
TYPE MONUMENT Lg. RR. SPK.

ON SURFACE - BELOW 4"

LEFT - & PAV'T. - RIGHT 0.5'

11.1' TO RT. EDGE PAVEMENT

S.L.M. 241+65

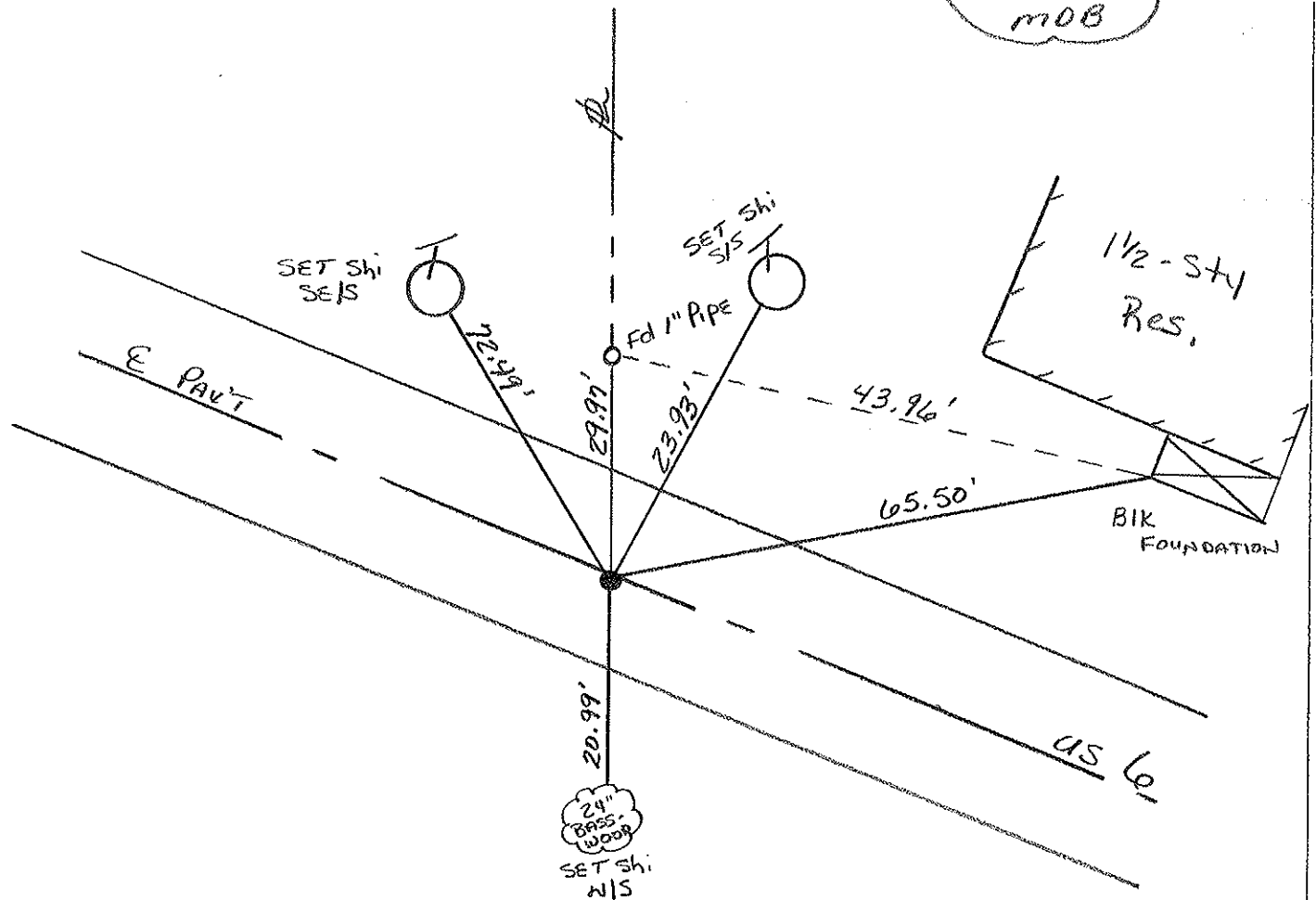


Record: POT = STA: 241+90.63

Reset PR/WASHER

10-23-00

MOB



PERSONNEL TITLE PERSONNEL TITLE

Red Beach
W. KNAPE

COUNTY HENRY

DATE 21/23 Mar. 77

S. R. US 6

WEATHER

SEC Ridgeville

TEMP

DESCRIPTION

LEFT CENTER LINE RIGHT

JOB NO.

CONTROL POINTS

West line, E 1/2, Sec 35

Reset PK/washer
10-23-00
MB

SE Cor.
2-2 CB
Set SLS
18
K Maple

Shiner
POT sta. 245+70.35
PK w/ shiner

Found PK on surf.
PK is 1.5' N. of pavt. ctr.

US 6

Meas. 179.01'

6 1/2" blacktop on conc. base

3 1/2" SW
middle cor. of porous slab

NE cor # 2-2 CB

8-31-00 MB-III MC-RC
KM-HC SH-P

0.5' L T E
12.4' R T E

PI sta 247+49.36
set 3/4" pipe over Rod

Behnfeldt's house on E North 245+43

8-30-00
Cg RR Spk
4" down
MB-LV MC-RC
KM-HC
Sunny +85°
0.5' RT E
11.1' RT E

17

BURL RENTZ
HERB MILLER
Found 1" pipe

1 1/2-S Frame
HERB MILLER
conc. Deck
Block Foundtn.

Reset PK/washer
10-23-00
MB

241+65

POT sta. 241+90.63
1" I. Rod

US 6

US 6

Found the recorded 1" Rod
6 3/4" below the existing surface
in the base conc. pavt.
The 1" Rod is 0.2' south
of ctr. of the 24' pavt.

60-d spk
NNW/S
25" Maple

24" 21" Basswood?
SET SH
N/S

60-d spk
E/S
20" Maple

2-5 Fr.
CORDES

PERSONNEL	TITLE	PERSONNEL	TITLE
Knabe			
Mohler			
Germaan			

COUNTY Henry DATE August 10, 1960
 S. R. U.S. 6 WEATHER Clear
 SEC. _____ TEMP. 80°

DESCRIPTION _____ LEFT _____ CENTER LINE _____ RIGHT _____ JOB NO. _____

17



Herb Miller

Burl Rentz

30' Iron Pipe

Iron Rod

U.S. 6

21.20'

21.24'

27.54'



21" Maple

19" Ash

21" Maple

Shiners in
Near Sides

Property Line East of Intersection of Ridge Rd. and U.S. 6
in Ridgerville Corners, Ohio

Set R.R. SpK 10/24/60