

O.D.O.T. DISTRICT 2 SURVEY OFFICE (USE ONLY)

PERSONNEL

REFERENCE NO. 17

SHEET 12 OF 31

NOTES NUHFER
 H.C. MOSER
 R.C. NUHFER

DATE 6/26/08
 WEATHER SUNNY
 TEMP. 85°

ROUTE SR 18
 COUNTY HENRY
 TOWNSHIP MONROE
 SECTION 32

DWG BY NIESE PID 105662

T 4 N R 7 E

TYPE MONUMENT P.K./WASHER

ON SURFACE - ~~BELOW~~ ON

OFFSET \varnothing PAVEMENT 3.6' LT : ~~RT~~
12.3' TO RT EDGE PAVEMENT

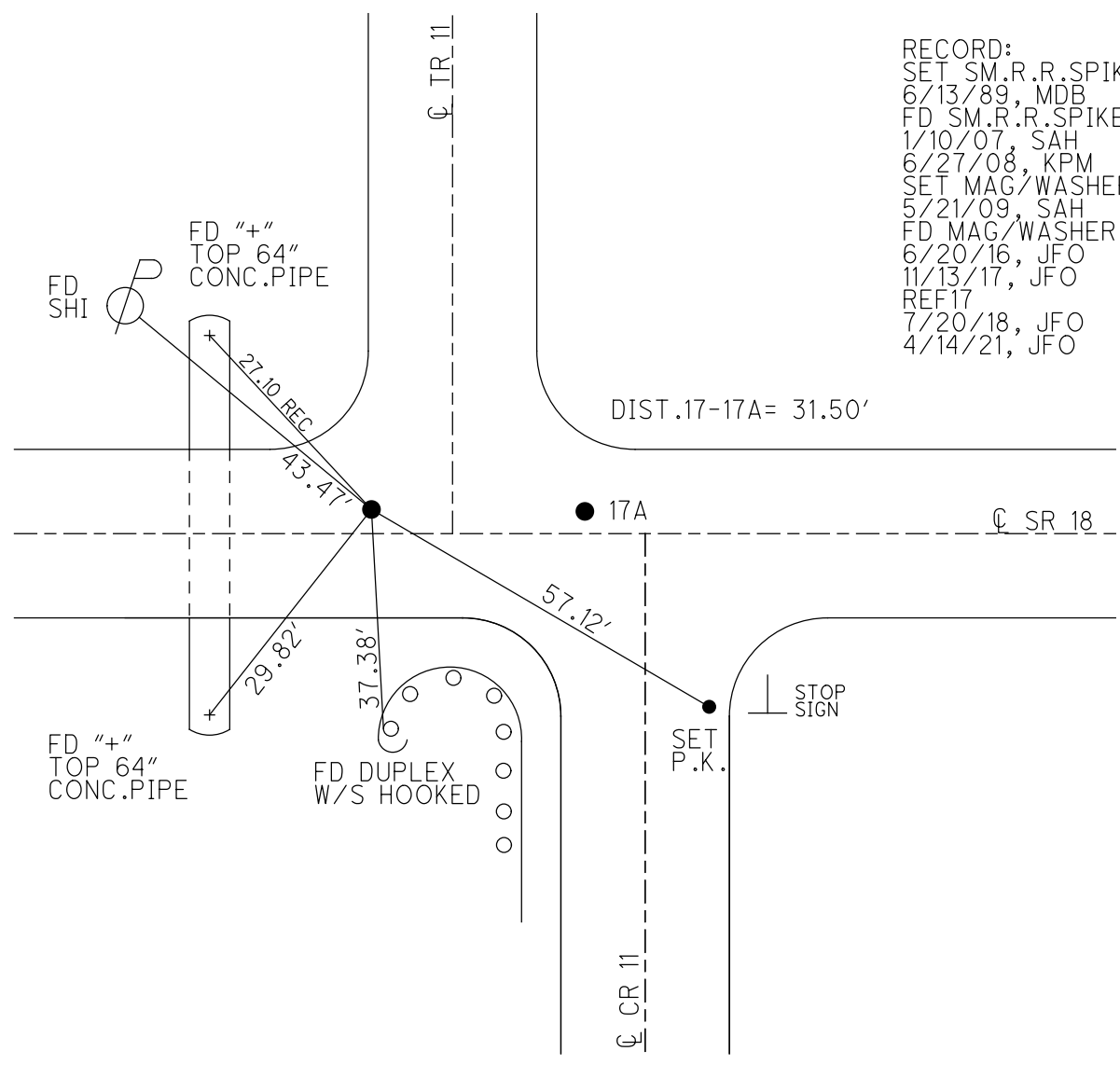
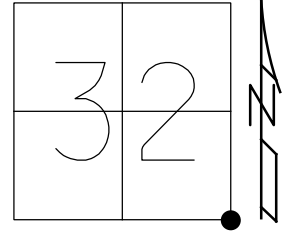
STATION: 419+39

HORZ.DATUM: NAD83 (2011)

GEOID: NAVD88 2012A

GRID: NORTHING: 582160.947

EASTING: 1535445.769

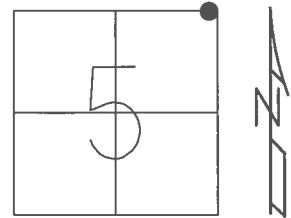


RECORD:
 SET SM.R.R.SPIKE
 6/13/89, MDB
 FD SM.R.R.SPIKE
 1/10/07, SAH
 6/27/08, KPM
 SET MAG/WASHER
 5/21/09, SAH
 FD MAG/WASHER
 6/20/16, JFO
 11/13/17, JFO
 REF17
 7/20/18, JFO
 4/14/21, JFO

O.D.O.T. DISTRICT 2 SURVEY OFFICE (USE ONLY)

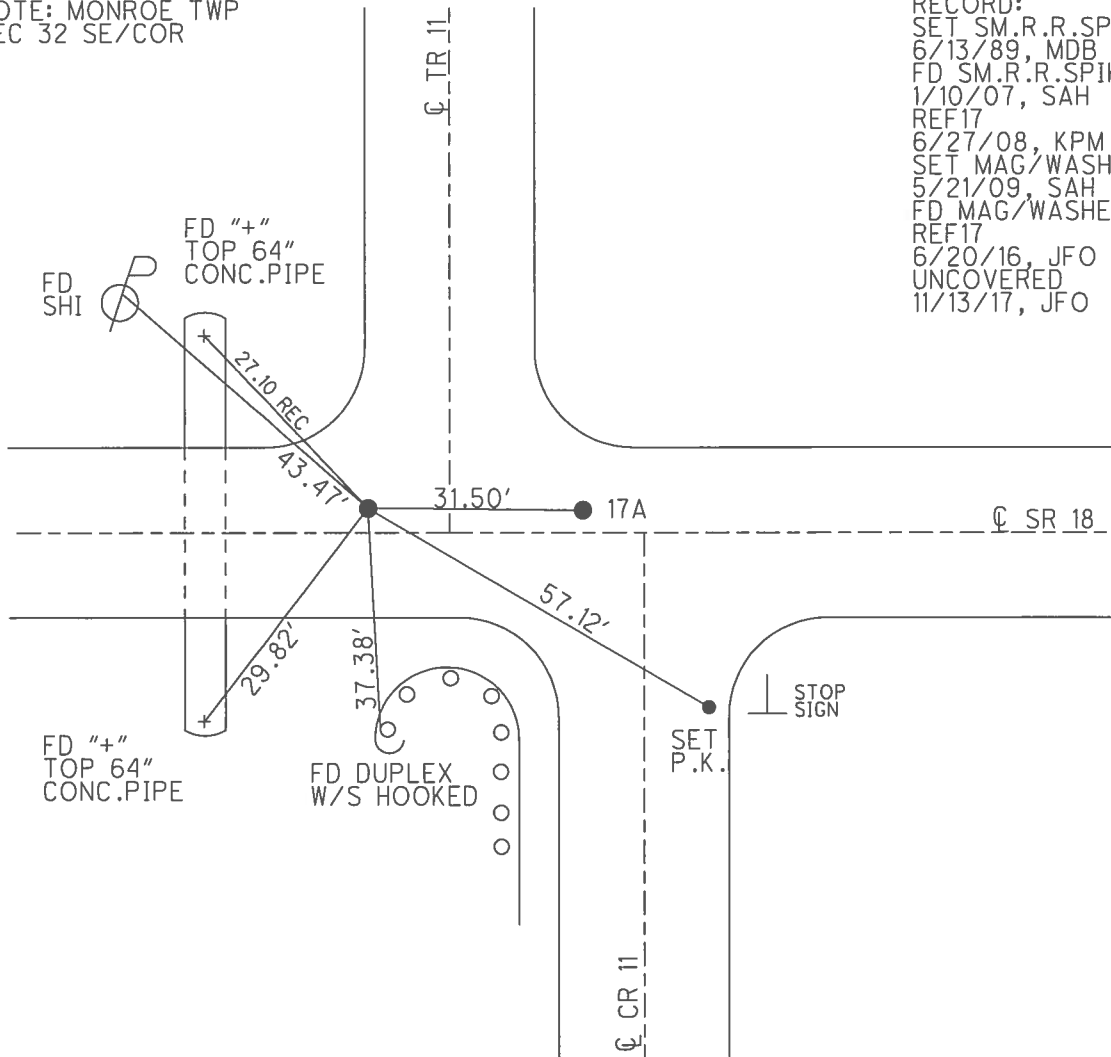
PERSONNEL	REFERENCE NO.	<u>17</u>	SHEET	<u>12</u>	OF	<u>31</u>
NOTES	NUHFER	DATE	<u>6/26/08</u>	ROUTE	<u>SR 18</u>	
H.C.	MOSER	WEATHER	<u>SUNNY</u>	COUNTY	<u>HENRY</u>	
R.C.	NUHFER	TEMP.	<u>85°</u>	TOWNSHIP	<u>MARION</u>	
				SECTION	<u>5</u>	
				T	<u>3</u>	N
				R	<u>7</u>	E

TYPE MONUMENT P.K./WASHER
 ON SURFACE - ~~BELOW~~ ON _____
 LEFT - Q PAV'T - ~~RIGHT~~ 3.6'
12.3' TO RT EDGE PAVEMENT
 S.L.M. 419+39
 GRID: NORTHING: 582160.947 EASTING: 1535445.769



NOTE: MONROE TWP
 SEC 32 SE/COR

RECORD:
 SET SM.R.R.SPIKE
 6/13/89, MDB
 FD SM.R.R.SPIKE
 1/10/07, SAH
 REF17
 6/27/08, KPM
 SET MAG/WASHER
 5/21/09, SAH
 FD MAG/WASHER
 REF17
 6/20/16, JFO
 UNCOVERED
 11/13/17, JFO



O.D.O.T. DISTRICT 2 SURVEY OFFICE (USE ONLY)

PERSONNEL

REFERENCE NO. 17

SHEET 12 OF 31

NOTES NUHFER

DATE 6/26/08

ROUTE SR 18

H.C. MOSER

WEATHER SUNNY

COUNTY HENRY

R.C. NUHFER

TEMP. 85°

TOWNSHIP MARION

SECTION 4

T 3 N R 7 E

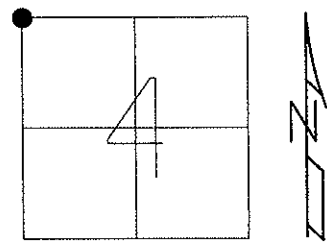
TYPE MONUMENT P.K./WASHER

ON SURFACE - ~~BELOW~~ ON

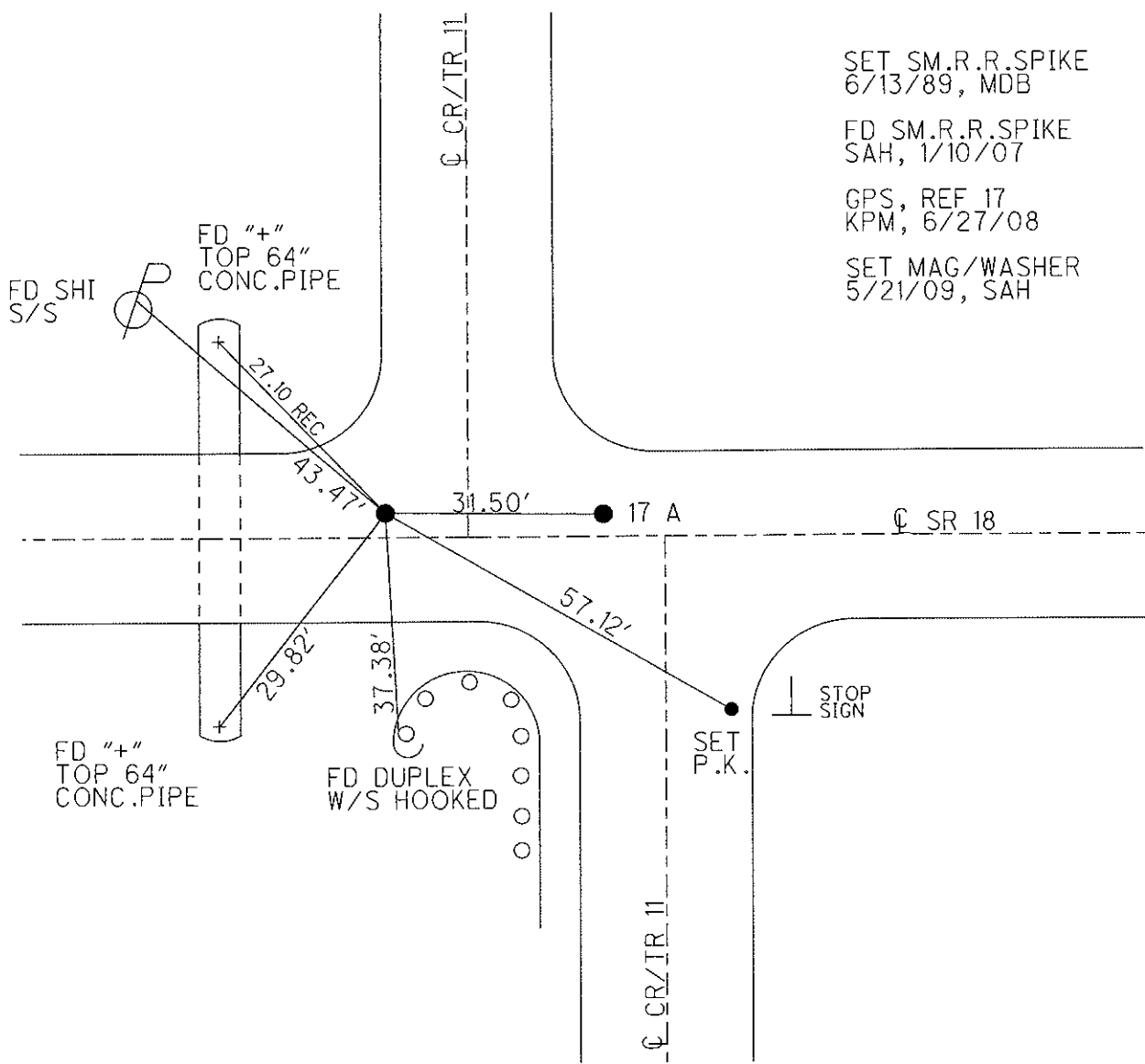
LEFT - CL PAV'T - ~~RIGHT~~ 3.6'

12.3' TO RT EDGE PAVEMENT

S.L.M. 419+39



Grid: Northing: 582160.805 Easting: 1535445.593



- SET SM.R.R.SPIKE
6/13/89, MDB
- FD SM.R.R.SPIKE
SAH, 1/10/07
- GPS, REF 17
KPM, 6/27/08
- SET MAG/WASHER
5/21/09, SAH

O.D.O.T. DISTRICT 2 SURVEY OFFICE

PERSONNEL

REFERENCE NO. 17

SHEET 4 OF

NOTES BARNHISEL

H.C.

R.C. Loehrke

DATE 3-30-89

WEATHER cloudy - RAIN

TEMP. +40°

ROUTE 18

COUNTY HENRY

TOWNSHIP MARION

SECTION 4

T 3 N R 7 E

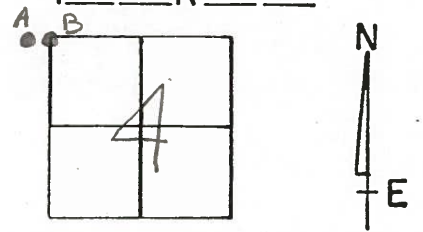
TYPE MONUMENT PK WASHER, PK WASHER

ON SURFACE - BELOW YES - YES

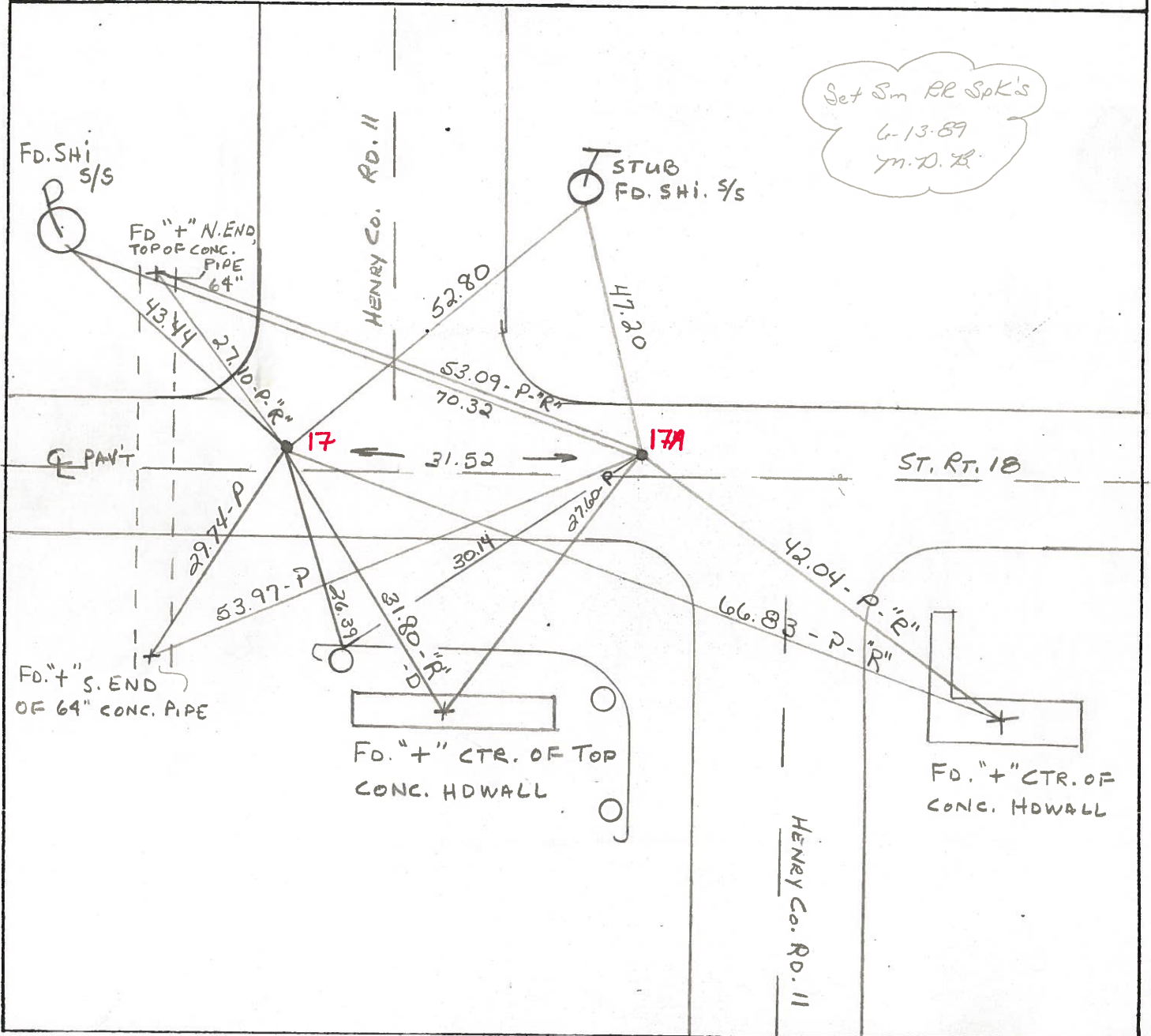
LEFT-℄ PAV'T. - RIGHT 3.3, 3.3

12.3 TO RT EDGE PAVEMENT

S.L.M. 419+39, 419+70



Set Sm RR Spk's
6-13-89
M.D.L.



PERSONNEL TITLE PERSONNEL TITLE

Stone

COUNTY Henry

DATE 29 Oct. 74

Deno

S. R. #18

WEATHER Cloudy

Michalak

SEC. Monroe - Marion Twp. TEMP. 60°

Curtis

DESCRIPTION

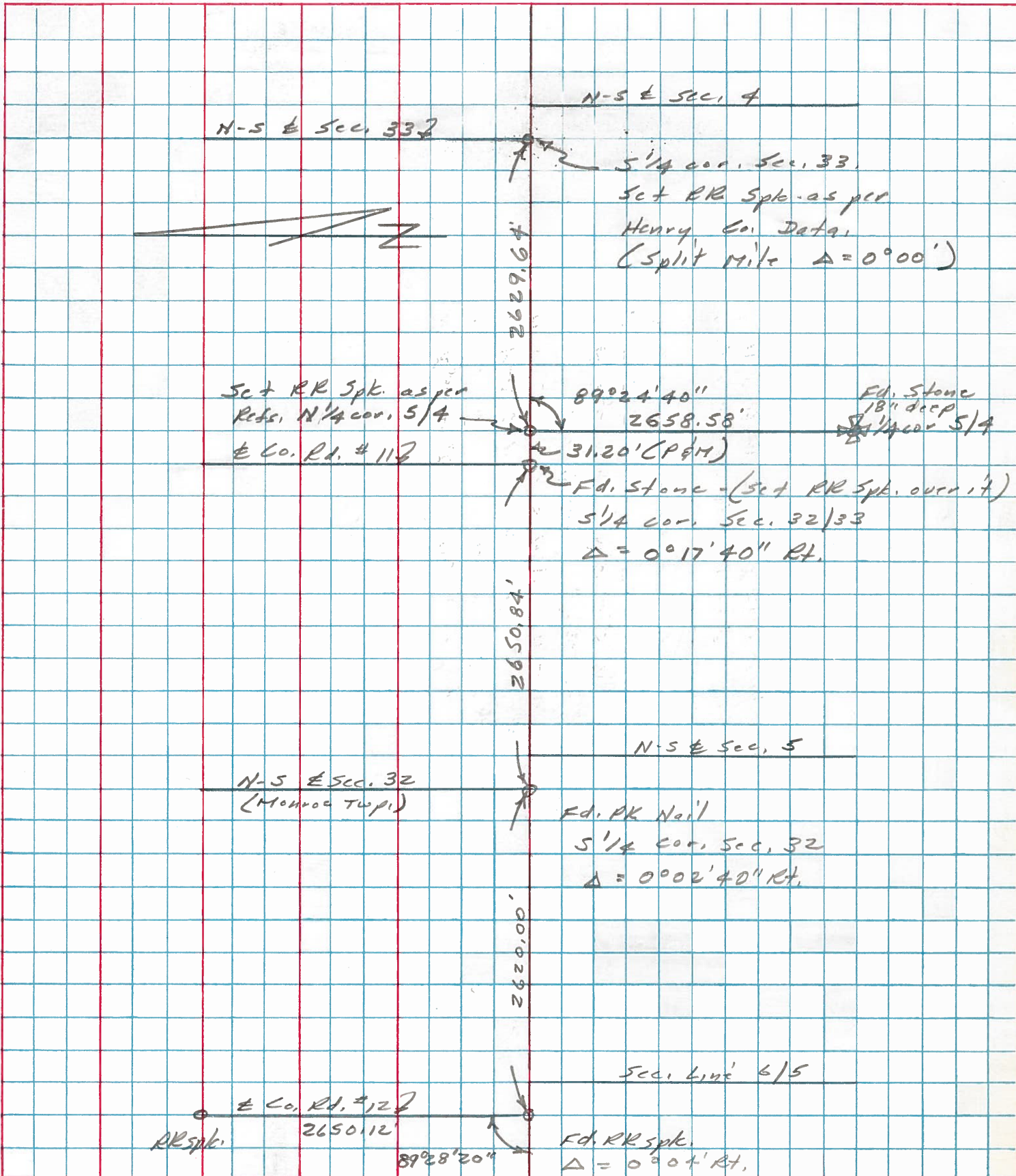
Alignment

JOB NO.

LEFT

CENTER LINE

RIGHT



PERSONNEL	TITLE	PERSONNEL	TITLE
W. Denno			
R. Michalak			
D. Curtis			

COUNTY Henry DATE Oct. 3, '74

S. R. 18 WEATHER Mild

SEC. TEMP. 55°

DESCRIPTION References To Control Points LEFT CENTER LINE RIGHT JOB NO. 02999101

