

O.D.O.T. DISTRICT 2 SURVEY OFFICE (USE ONLY)

PERSONNEL

REFERENCE NO. 17 A

SHEET 13 OF 31

NOTES NUHFER

DATE 6/26/08

ROUTE SR 18

H.C. MOSE

WEATHER SUNNY

COUNTY HENRY

R.C. NUHFER

TEMP. 85°

TOWNSHIP MARION

SECTION 5

DWG BY NIESE

PID 105662

T 3 N R 7 E

TYPE MONUMENT P.K./WASHER

ON SURFACE - ~~BELOW~~ ON

OFFSET CL PAVEMENT 3.6' LT : ~~RT~~

12.3' TO RT EDGE PAVEMENT

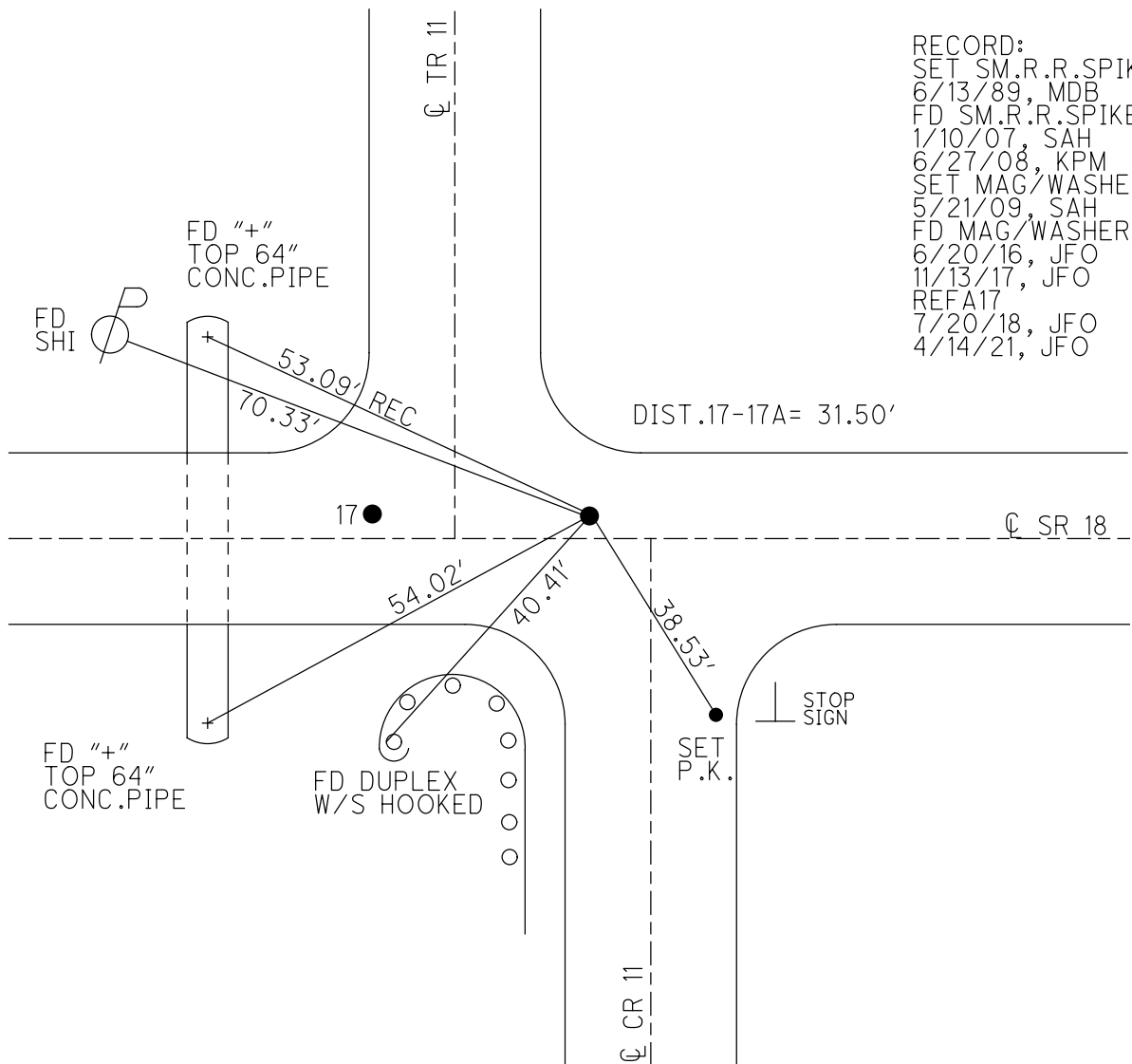
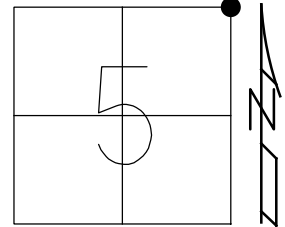
STATION: 419+70

HORIZ.DATUM: NAD83 (2011)

GEOID: NAVD88 2012A

GRID: NORTHING: 582160.352

EASTING: 1535477.221

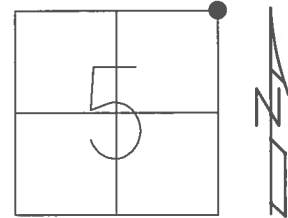


RECORD:
 SET SM.R.R.SPIKE
 6/13/89, MDB
 FD SM.R.R.SPIKE
 1/10/07, SAH
 6/27/08, KPM
 SET MAG/WASHER
 5/21/09, SAH
 FD MAG/WASHER
 6/20/16, JFO
 11/13/17, JFO
 REFA17
 7/20/18, JFO
 4/14/21, JFO

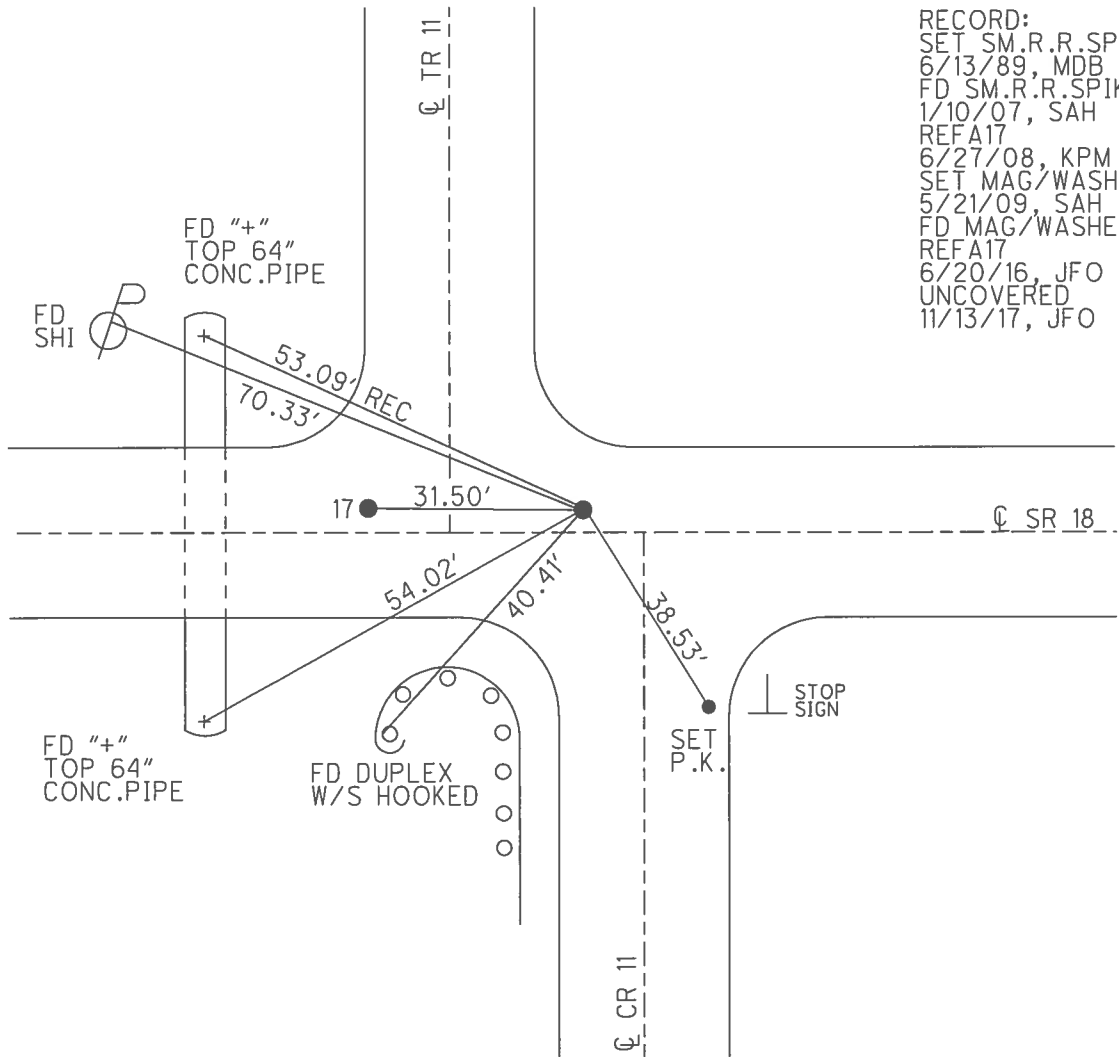
O.D.O.T. DISTRICT 2 SURVEY OFFICE (USE ONLY)

PERSONNEL	REFERENCE NO.	17 A	SHEET	13	OF	31
NOTES	DATE	6/26/08	ROUTE	SR 18		
H.C.	WEATHER	SUNNY	COUNTY	HENRY		
R.C.	TEMP.	85°	TOWNSHIP	MARION		
			SECTION	5		
			T	3 N	R	7 E

TYPE MONUMENT P.K./WASHER
 ON SURFACE - ~~BELOW~~ ON _____
 LEFT - CL PAV'T - ~~RIGHT~~ 3.6'
12.3' TO RT EDGE PAVEMENT
 S.L.M. 419+70



GRID: NORTHING: 582160.352 EASTING: 1535477.221



RECORD:
 SET SM.R.R.SPIKE
 6/13/89, MDB
 FD SM.R.R.SPIKE
 1/10/07, SAH
 REFA17
 6/27/08, KPM
 SET MAG/WASHER
 5/21/09, SAH
 FD MAG/WASHER
 REFA17
 6/20/16, JFO
 UNCOVERED
 11/13/17, JFO

O.D.O.T. DISTRICT 2 SURVEY OFFICE (USE ONLY)

PERSONNEL

REFERENCE NO. 17 A

SHEET 13 OF 31

NOTES NUHFER

DATE 6/26/08

ROUTE SR 18

H.C. MOSER

WEATHER SUNNY

COUNTY HENRY

R.C. NUHFER

TEMP. 85°

TOWNSHIP MARION

SECTION 4

T 3 N R 7 E

TYPE MONUMENT P.K./WASHER

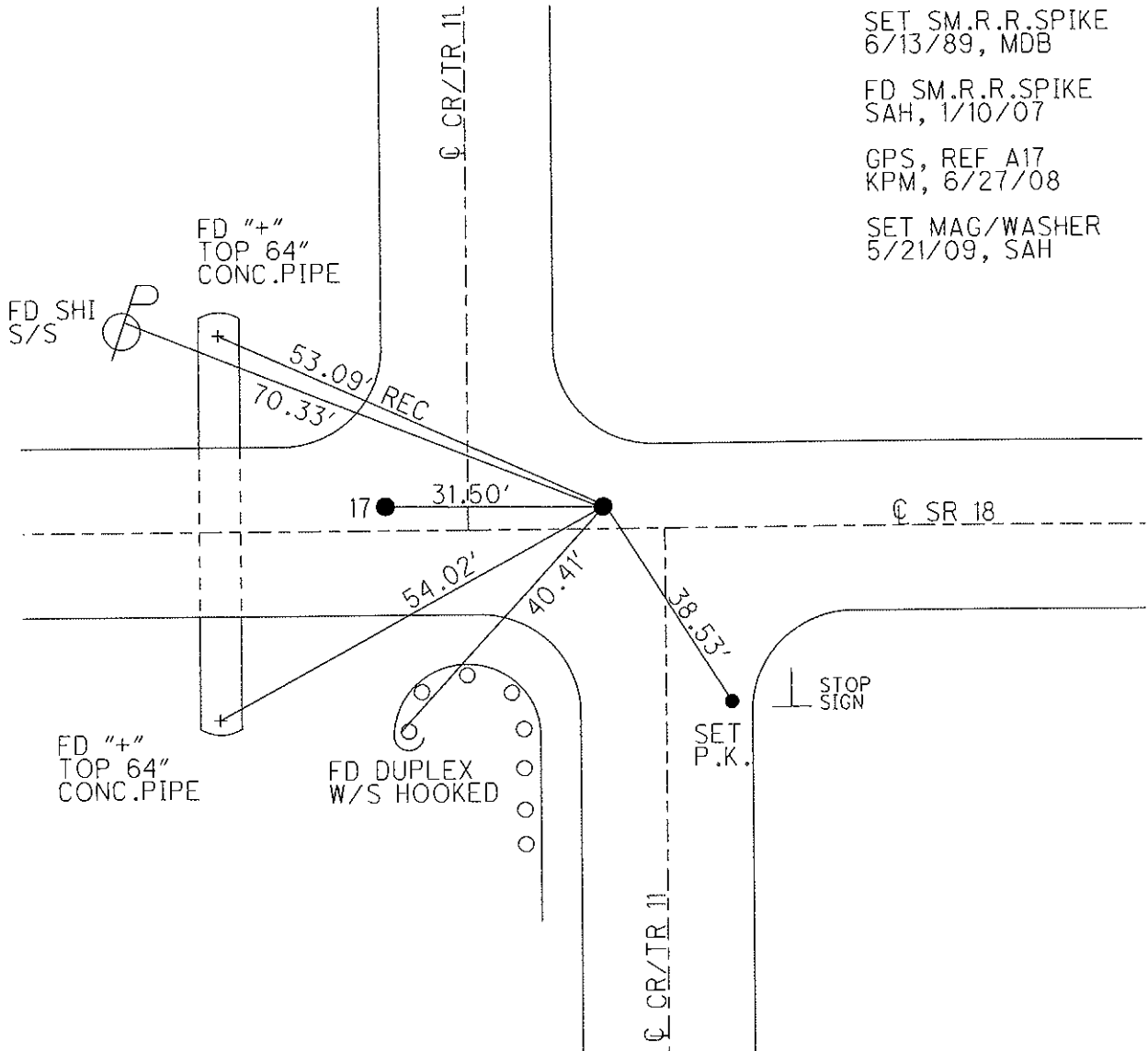
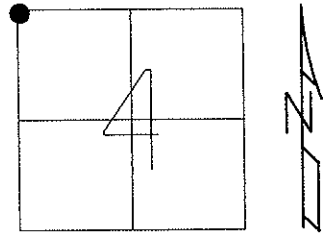
ON SURFACE - ~~BELOW~~ ON

LEFT - CL PAV'T - ~~RIGHT~~ 3.6'

12.3' TO RT EDGE PAVEMENT

S.L.M. 419+70

Grid: Northing: 582160.242 Easting: 1535477.181



SET SM.R.R.SPIKE
6/13/89, MDB

FD SM.R.R.SPIKE
SAH, 1/10/07

GPS, REF A17
KPM, 6/27/08

SET MAG/WASHER
5/21/09, SAH

O.D.O.T. DISTRICT 2 SURVEY OFFICE

PERSONNEL

REFERENCE NO. 17

SHEET 4 OF

NOTES BARNHISEL

H.C.

R.C. Loehrke

DATE 3-30-89

WEATHER cloudy - RAIN

TEMP. +40°

ROUTE 18

COUNTY HENRY

TOWNSHIP MARION

SECTION 4

T 3 N R 7 E

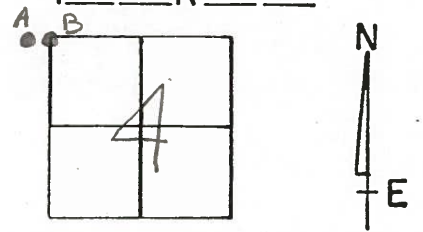
TYPE MONUMENT PK WASHER, PK WASHER

ON SURFACE - BELOW YES - YES

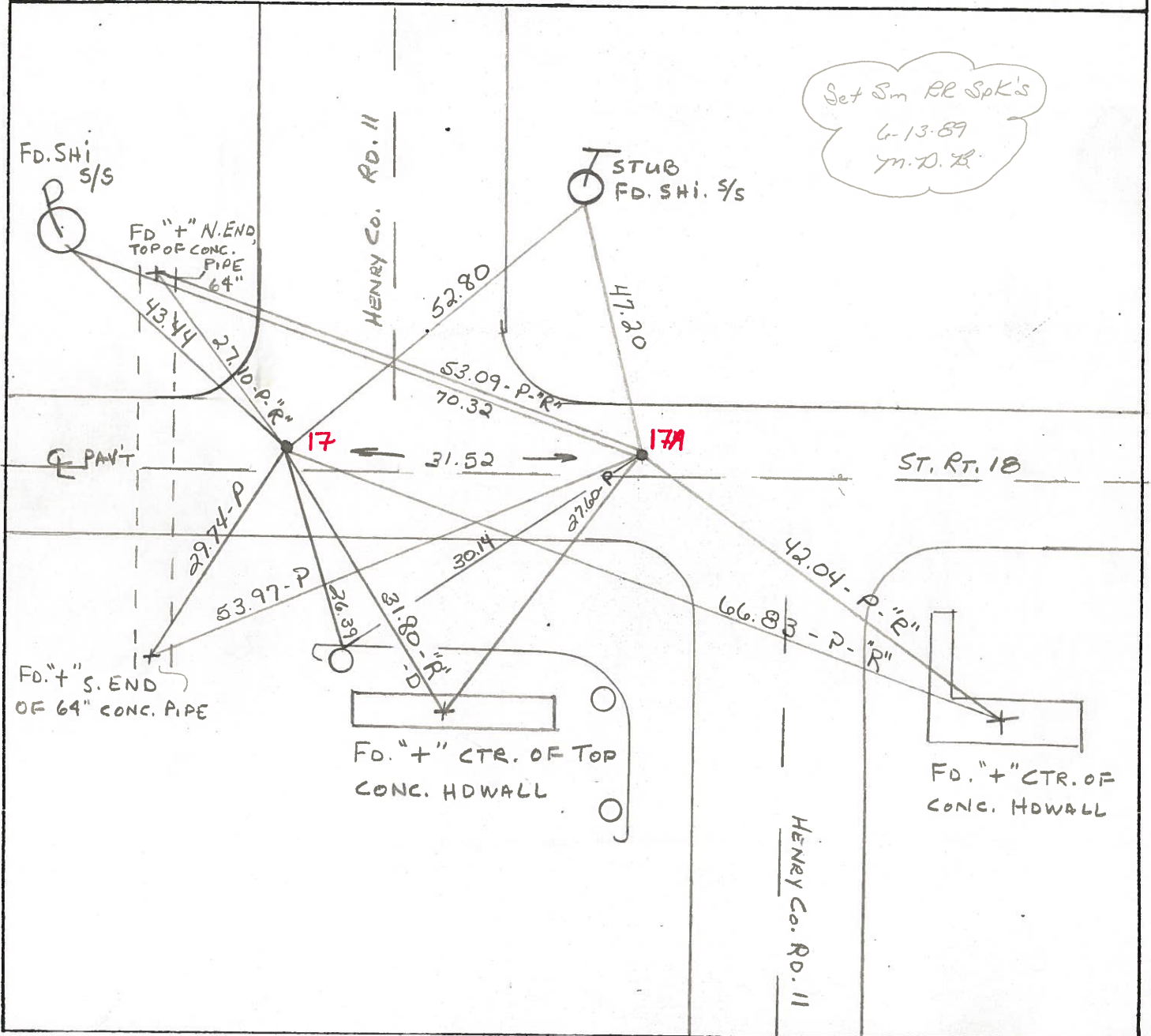
LEFT-℄ PAV'T. - RIGHT 3.3, 3.3

12.3 TO RT EDGE PAVEMENT

S.L.M. 419+39, 419+70



Set Sm RR Spk's
6-13-89
M.D.L.



County HENRY S.R. 18

Date 5-29-81 8-19-81

Township MARION

Weather cloudy

Section 4

Temp. +60°

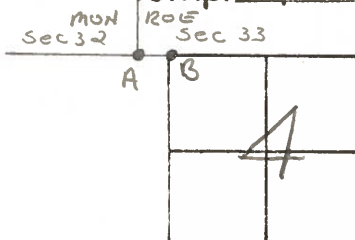
T3N, R1E

Personnel S. HOFFMAN

C. LORRKE

J. HOUSEHOLDER

17

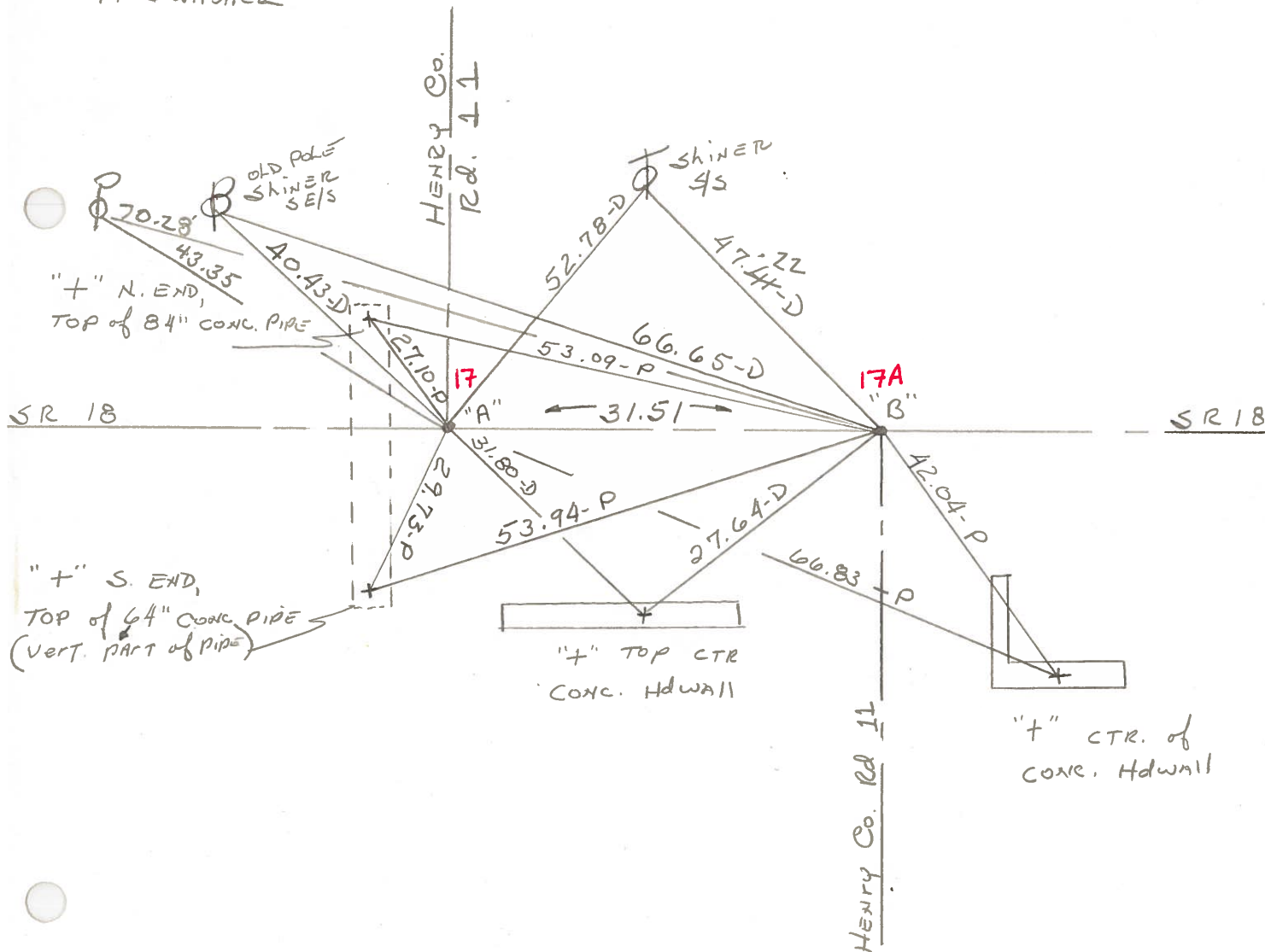


PT. "A" Fd. R.R. SPK @ SURFACE
10.1' TO S. EDGE PAVT

PROJECT STA. ± 419 + 56

PT. "B" Fd. R.R. SPK @ SURFACE
6.6' TO N. EDGE PAVT.
SET. P.K. & WASHED

PROJECT STA. ± 419 + 87



PERSONNEL TITLE PERSONNEL TITLE

Stone

COUNTY Henry

DATE 29 Oct. 74

Deno

S. R. #18

WEATHER Cloudy

Michalak

SEC. Monroe - Marion Twp. TEMP. 60°

Curtis

DESCRIPTION

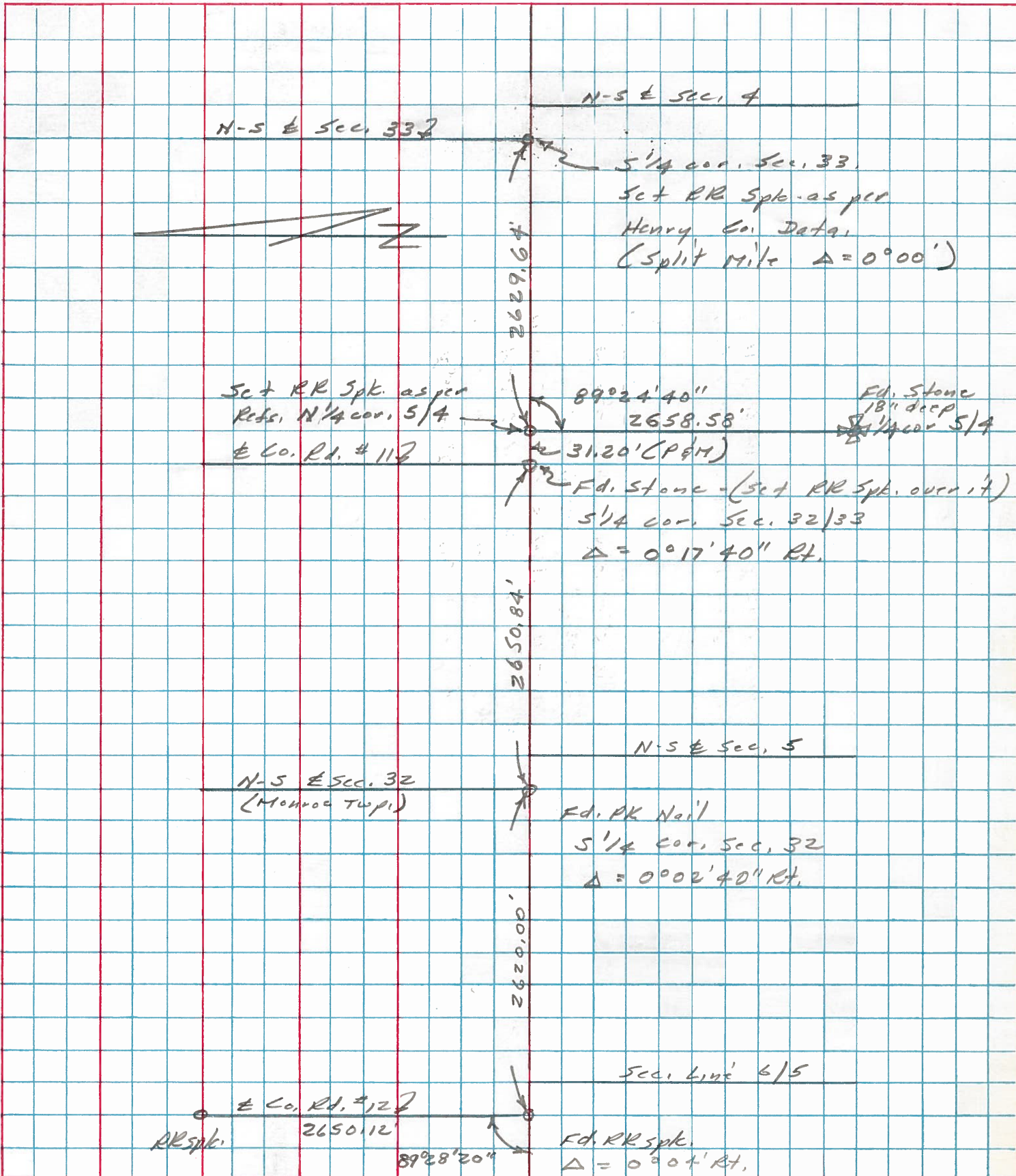
Alignment

JOB NO.

LEFT

CENTER LINE

RIGHT



PERSONNEL	TITLE	PERSONNEL	TITLE
W. Denno			
R. Michalak			
D. Curtis			

COUNTY Henry DATE Oct. 3, '74

S. R. 18 WEATHER Mild

SEC. TEMP. 55°

DESCRIPTION References To Control Points LEFT CENTER LINE RIGHT JOB NO. 02999101

