

O.D.O.T. DISTRICT 2 SURVEY OFFICE (USE ONLY)

PERSONNEL

REFERENCE NO. 21 A

SHEET 22 OF 31

NOTES CANTERBURY

DATE 8/18/98

ROUTE SR 18, 109

H.C. ROUSOS

WEATHER FAIR

COUNTY HENRY

R.C. BARNHISEL

TEMP. 80°

TOWNSHIP MARION

SECTION 3

T 3 N R 7 E

TYPE MONUMENT STONE (SCRAP IRON ATOP)

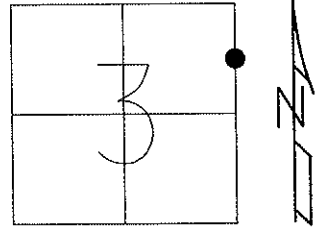
~~ON SURFACE~~ - BELOW 2"

~~LEFT~~ - Q PAV'T - RIGHT 19.7'

10' E. TO W EDGE PAVEMENT

S.L.M. 538+81

Grid: Northing: _____ Easting: _____



NOTE:

8" LONG BROKEN PIECE OF
STEEL TRUCK SPRING OVER
STONE, 10' TO W.E.P. AND
19.7' W. OF Q PAV'T.
S.L.M. STA. 538+69

FD "+" CUT
ON E/S FACE
COR.POST



27.41'



59.34'



FD SHI
W/S

Q SR 18/109

113.24'



FD "+" CUT
ON E/S FACE
COR.CONC.C.B.

O.D.O.T. DISTRICT 2 SURVEY OFFICE

PERSONNEL _____

REFERENCE NO. 21A

SHEET 9 OF _____

NOTES CANTERBURY

H.C. ROUSOS

R.C. BARNHISEL

DATE 8-18-98

WEATHER FAIR

TEMP. +80°F

ROUTE 18 & 109

COUNTY HENRY

TOWNSHIP MARION

SECTION 3

T 3 N R 7 E

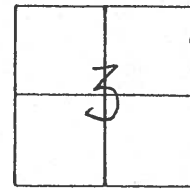
TYPE MONUMENT STONE (SCRAP IRON ON TOP)

~~ON SURFACE~~ - BELOW 2" BELOW

~~LEFT - & PAVT.~~ - RIGHT 19.7' RT & PAVT.

10' ETO W. EDGE PAVEMENT

S.L.M. 538 + 81



NOTE:

8" LONG BROKEN PIECE OF STEEL TRUCK SPRING
OVER STONE 10' TO W. EDGE OF PAVT. & 19.7'
W. OF & PAVT. SLM. STA. 538 + 69.

OFF PAVEMENT

S.R. 18 & 109

& PAVT.

FND. "+" CUT
ON E. FACE
COR. POST

27.41'

59.34'



Fd. SHI. W/S

113.24'



Fd. "+" CUT ON
EAST SIDE CONC. C.B.

O.D.O.T. DISTRICT 2 SURVEY OFFICE

PERSONNEL

REFERENCE NO. 21A

SHEET 9 OF _____

NOTES BARNHISEL

H.C. " "

R.C. Loehke

DATE 4-3-89

WEATHER cloudy

TEMP. +48°

ROUTE 18 & 109

COUNTY _____

TOWNSHIP MARION

SECTION _____

T 3 N R 7 E

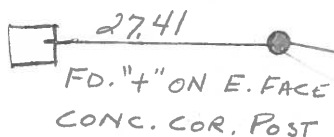
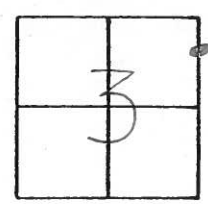
TYPE MONUMENT STONE (SCRAPE IRON ON TOP)

ON SURFACE - BELOW 2"

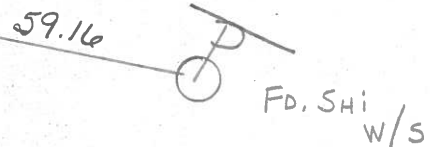
LEFT-~~C~~ PAV'T. - ~~RIGHT~~ 19.7

10.0 TO W EDGE PAVEMENT 15.7

S.L.M. 538+81



E PAV'T S.R. 18 & 109



Q.D.O.T. DISTRICT 2 SURVEY OFFICE

SHEET _____ OF _____

County HENRY S.R. 18E109

Date 4/25/83

Township MARION

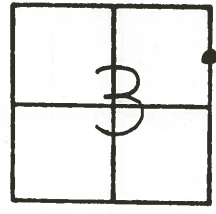
Weather CLEAR

Section 3

Temp. +60°

T3N, R7E

Personnel HOFFMAN



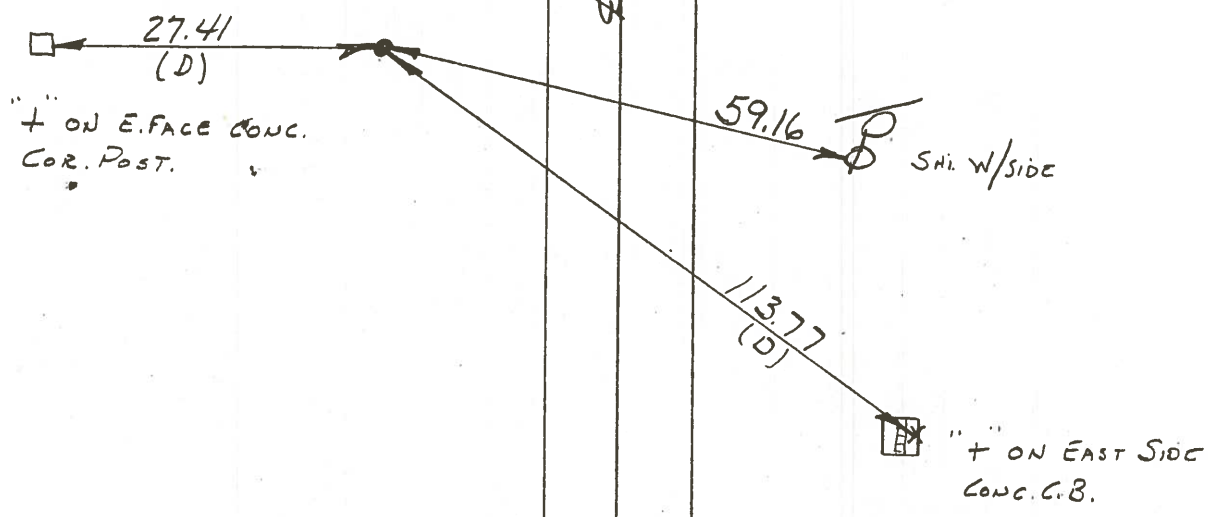
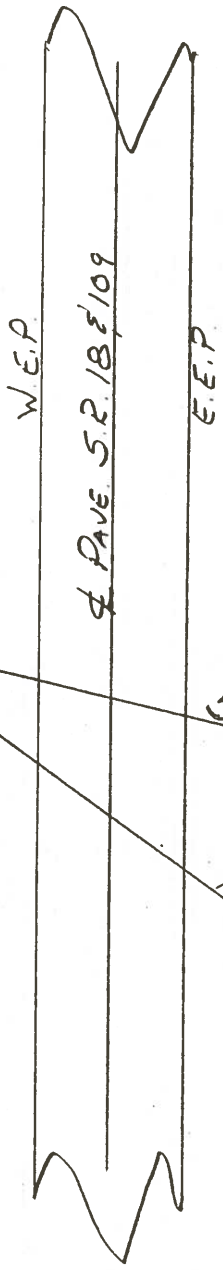
#21-A

LOEHRKE

HOUSEHOLDER

BARNHISEL

FD. STONE 2' BELOW SURFACE,
 PLACED 8" LONG, BROKEN PIECE
 OF STEEL TRUCK SPRING
 OVER STONE.
 10.0' TO W. EDGE PAVE. &
 19.7' WEST OF d. PAVE.
 HEN. 18-SL.M. STA. 538+69±



County HENRY S.R. 18-109

Date 5-29-81

Township MARION

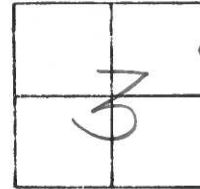
Weather PARTLY CLOUDY

Section 3

Temp. +75°

T3N, R7E

Personnel S. Hoffmann

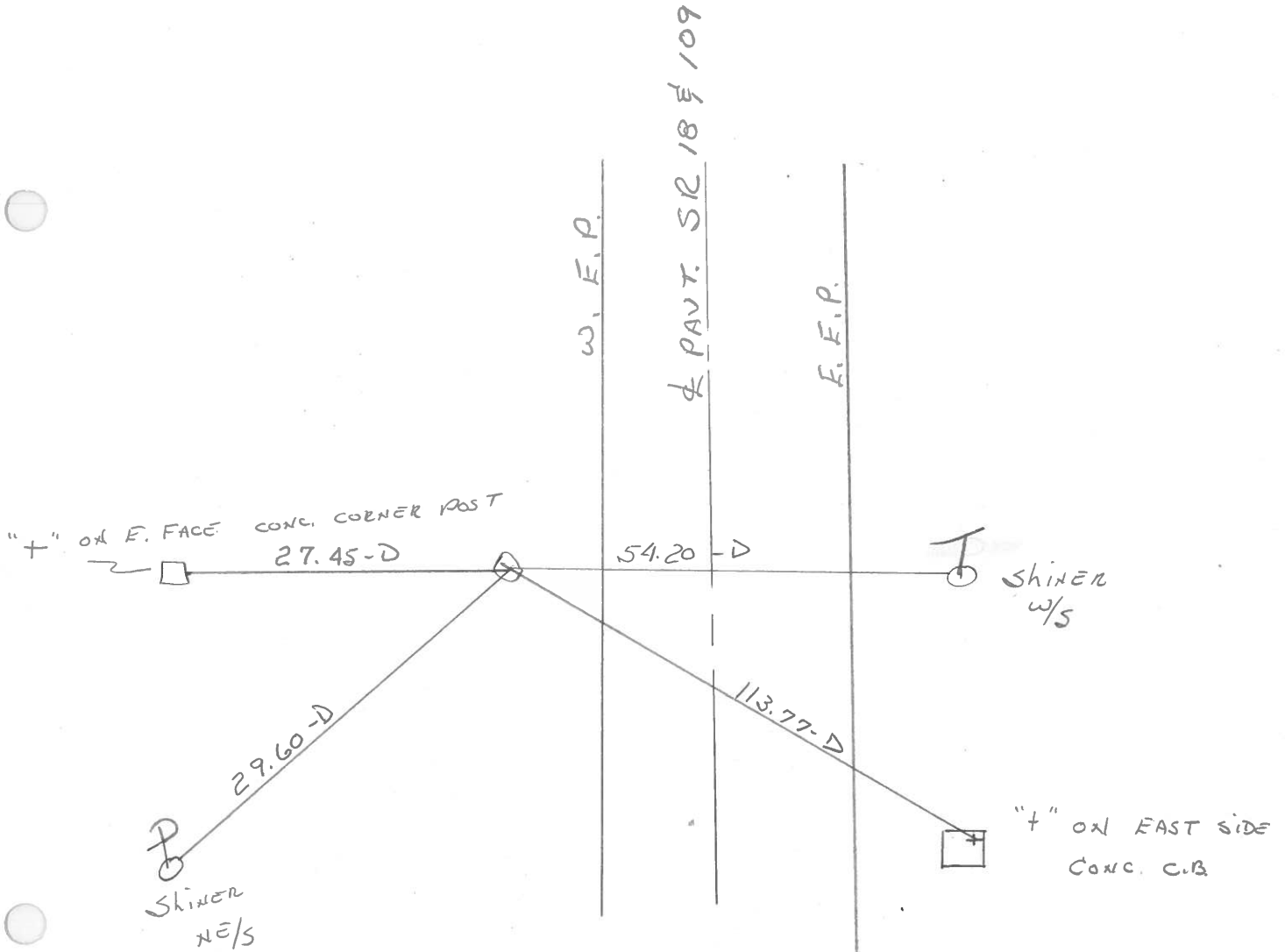


21-A

C. Doehrke

J. Householder

Fd. STONE 2" Below surface
10.0' west of W.F.P.



PERSONNEL TITLE PERSONNEL TITLE

COUNTY Henry DATE 13 May 79

Stone
Michalak
Dana
Curti

S. R. #18 WEATHER Cloudy
SEC. Marion Twp. TEMP. 75°

DESCRIPTION Revs. to Control Points JOB NO. 02999(a)

