

O.D.O.T. DISTRICT 2 SURVEY OFFICE (USE ONLY)

PERSONNEL _____

REFERENCE NO. 22

SHEET 23 OF 31

NOTES CANTERBURY

DATE 8/18/98

ROUTE SR 18, 109

H.C. ROUSOS

WEATHER FAIR

COUNTY HENRY

R.C. BARNHISEL

TEMP. 80°

TOWNSHIP MARION

SECTION 3

T 3 N R 7 E

TYPE MONUMENT STONE W/DEPRESSION AT CTR.

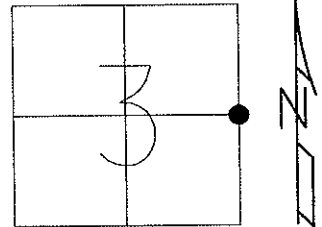
ON SURFACE - ~~BELOW~~ ON _____

~~LEFT~~ - Q PAV'T - RIGHT 20.4'

10.25' E TO W EDGE PAVEMENT

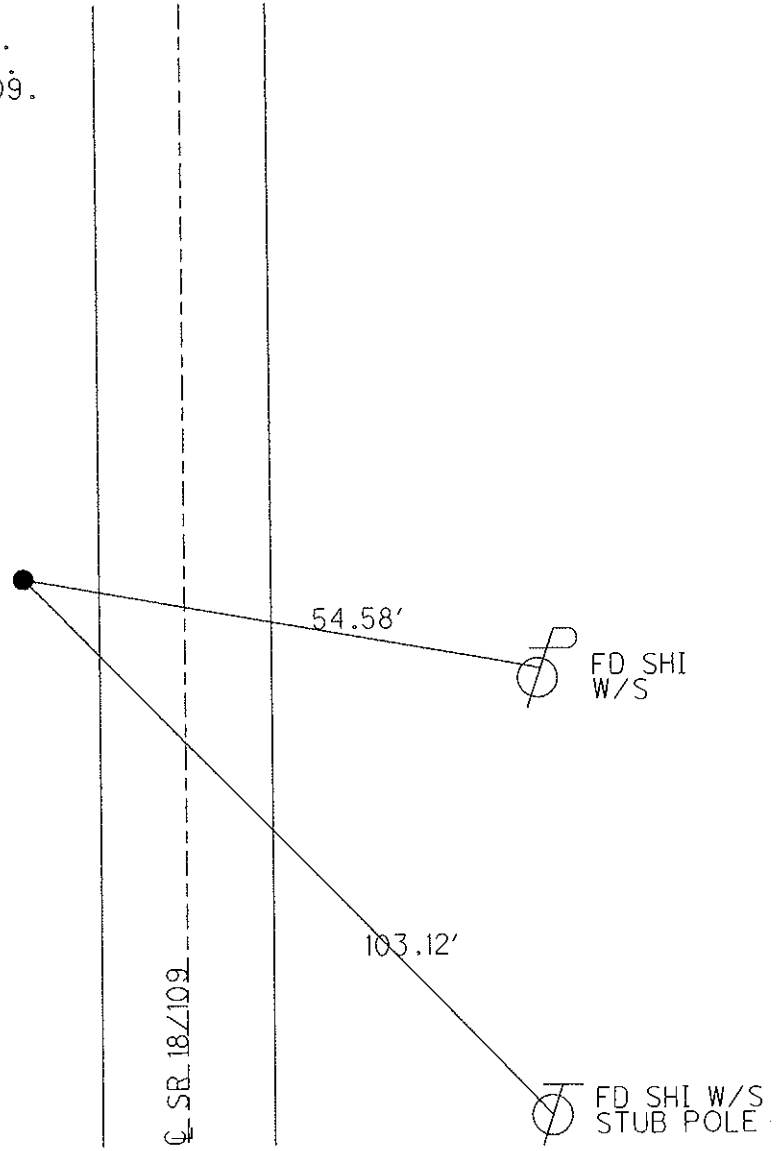
S.L.M. 551+92

Grid: Northing: _____ Easting: _____



RECORD:
 FD. STONE/DEPRESSION AT CTR.
 AT SURFACE. 10.25" W. OF E.O.P.
 20.4' W. OF Q PAV'T SR 18 & 109.
 S.L.M. HEN 18 STA. 551+80

NOTE:
 FD. STONE BUT UNABLE TO
 DETERMINE WHAT WAS USED ON
 STONE. OLD TIES DON'T HELP
 WITH DEFINING A GOOD POINT.



O.D.O.T. DISTRICT 2 SURVEY OFFICE

PERSONNEL _____

REFERENCE NO. 22

SHEET 10 OF _____

NOTES CANTERBURY

H.C. ROUSOS

R.C. BARNHISEL

DATE 8-18-98

WEATHER FAIR

TEMP. +80° F

ROUTE 18 & 109

COUNTY HENRY

TOWNSHIP MARION

SECTION 3

T 3 N R 7 E

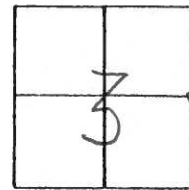
TYPE MONUMENT STONE W/DEPRESSION @ CNTR.

ON SURFACE - BELOW SURFACE

~~LEFT - & PAV'T.~~ - RIGHT 20.4' RT OF & PAV'T.

10.25 ETO W. EDGE PAVEMENT

S.L.M. 551 + 92



OFF PAVEMENT

RECORD:

FND. STONE/DEPRESSION @ CENTER @

SURFACE 10.25' W. OF W. E.O.P.

20.4' W. OF & PAV'T. S.R. 18 & 109

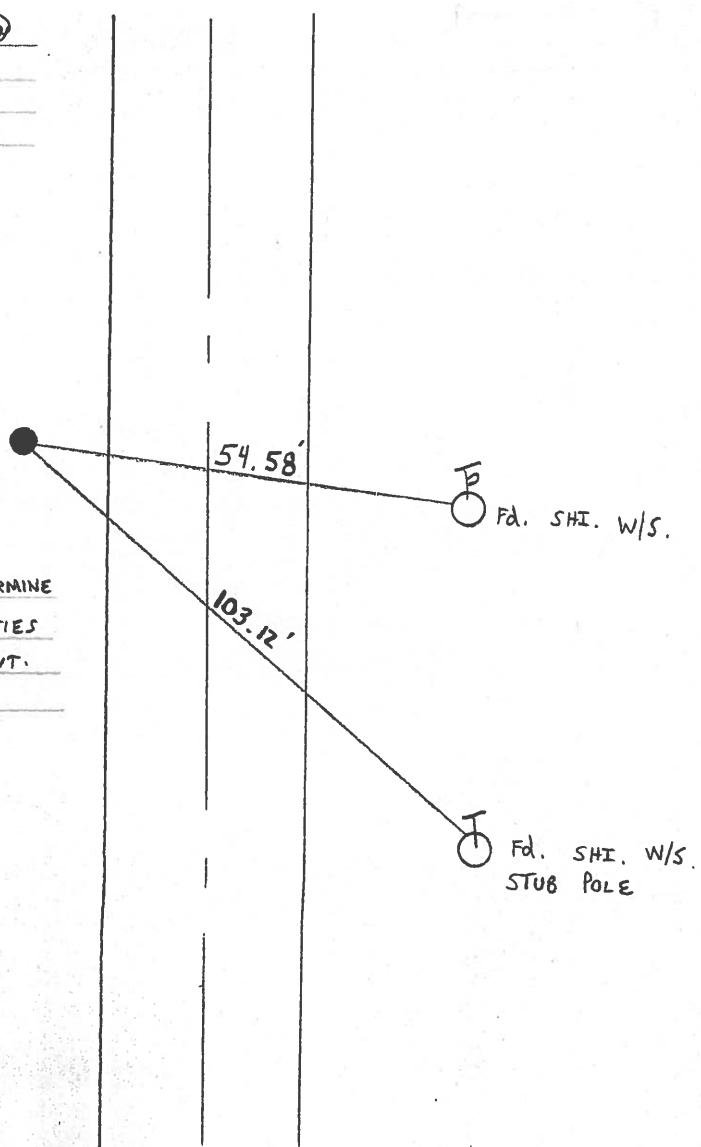
S.L.M. = HEN 18 - STA 551+80

NOTE:

FOUND STONE BUT UNABLE TO DETERMINE

WHAT WAS USED ON STONE, OLD TIES

DONT HELP WITH DEFINING A GOOD POINT.



O.D.O.T. DISTRICT 2 SURVEY OFFICE

PERSONNEL

REFERENCE NO. 22

SHEET 10 OF

NOTES BARNHISEL

H.C. " "

R.C. Loehke

DATE 4-3-89

WEATHER cloudy

TEMP. +48°

ROUTE 184109

COUNTY HENRY

TOWNSHIP MARION

SECTION 3

T 3 N R 7 E

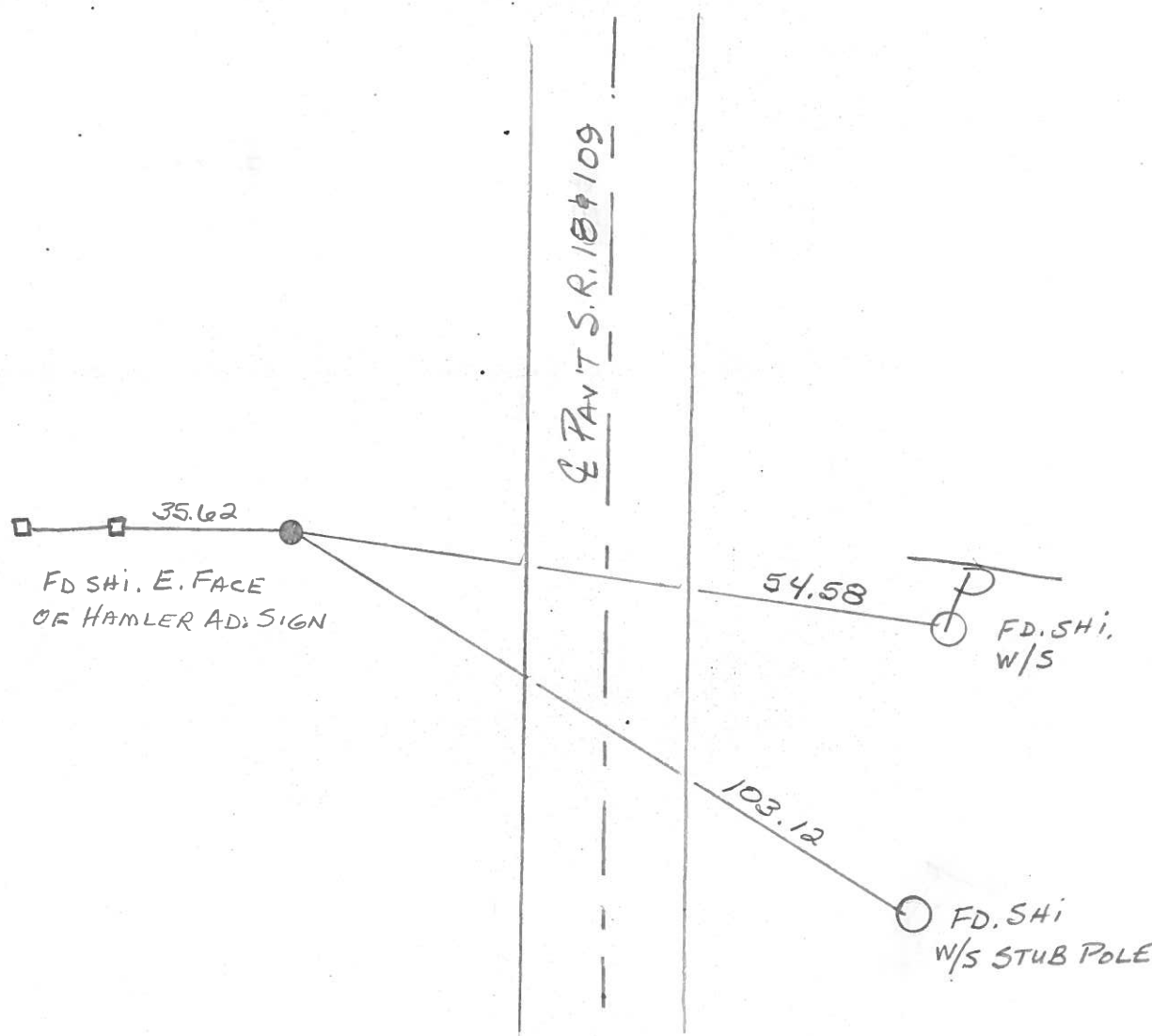
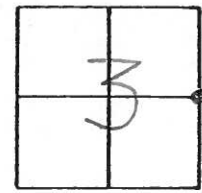
TYPE MONUMENT STONE @ CTR. @ SURFACE

ON SURFACE - BELOW yes

LEFT- & PAV'T. - RIGHT 20.4

10.25 TO W EDGE PAVEMENT 20.4 W/ 1 FT

S.L.M. 551+92 (HENRY S.R. 18)



Q.D.O.T. DISTRICT 2 SURVEY OFFICE

SHEET _____ OF _____

County HENRY S.R. 18 E 109

Date 4/25/83

Township MARION

Weather CLEAR

Section 3

Temp. +60°

T3N, R7E

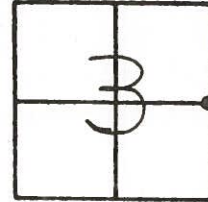
Personnel HOFFMAN

LOEHRKE

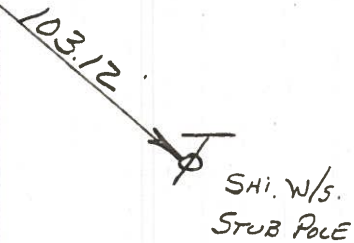
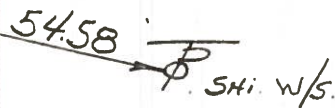
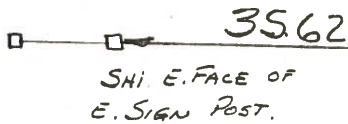
HOUSEHOLDER

BARNHISEL

#22



FD. STONE/DEPRESSION @ CTR.
@ SURFACE 10.25' WEST OF W.E.P.
20.4' W. OF & PAVE. S.R. 18 E 109
S.L.M. = HEN. 18 - STA. 551+80±



County HENRY S.R. 18-109

Township MARION

Section 3

T3N, R7E

Personnel S. Hoffmann

C. Loehrke

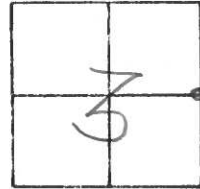
L. Householder

#22

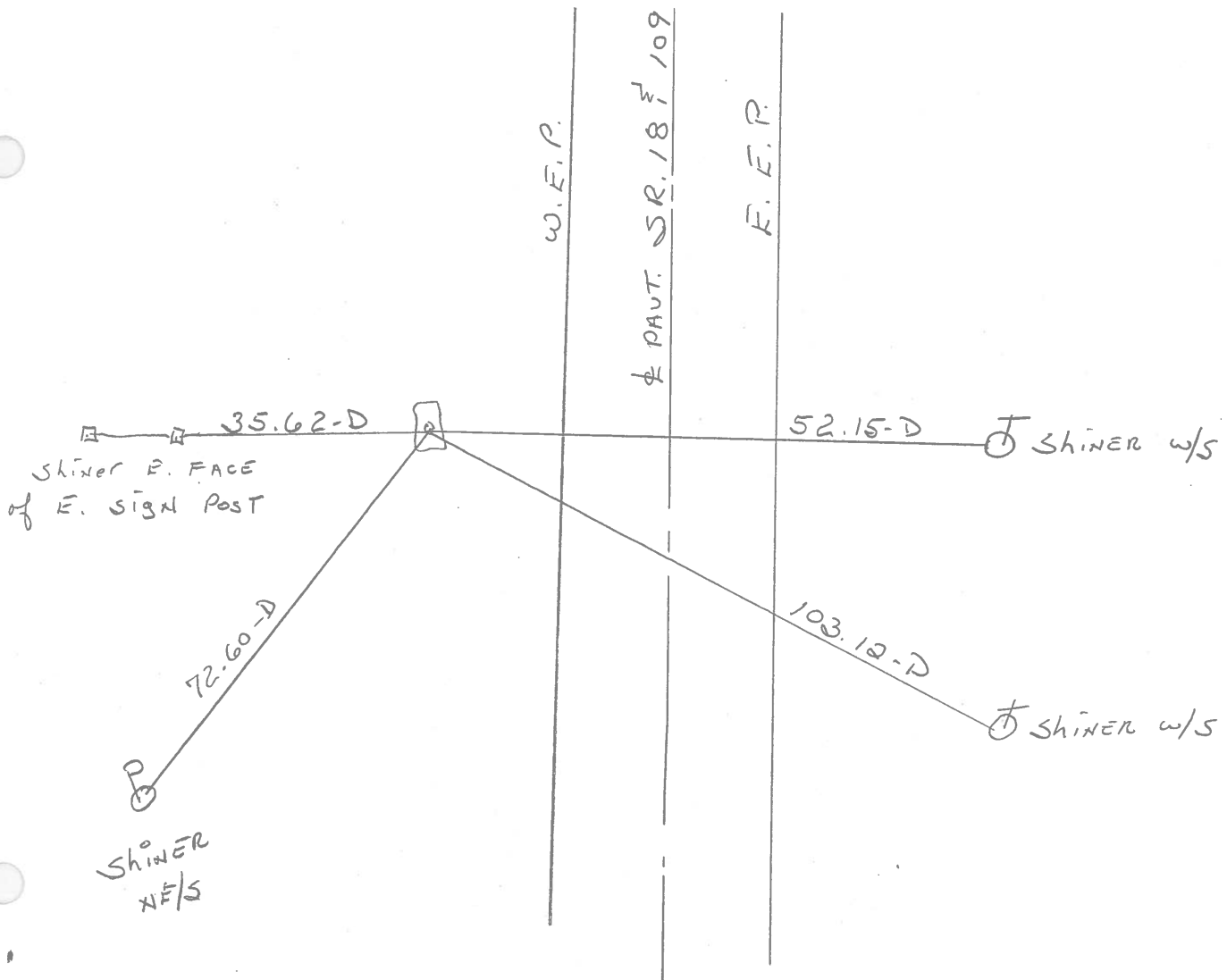
Date 5-29-81

Weather PARTLY CLOUDY

Temp. +75°

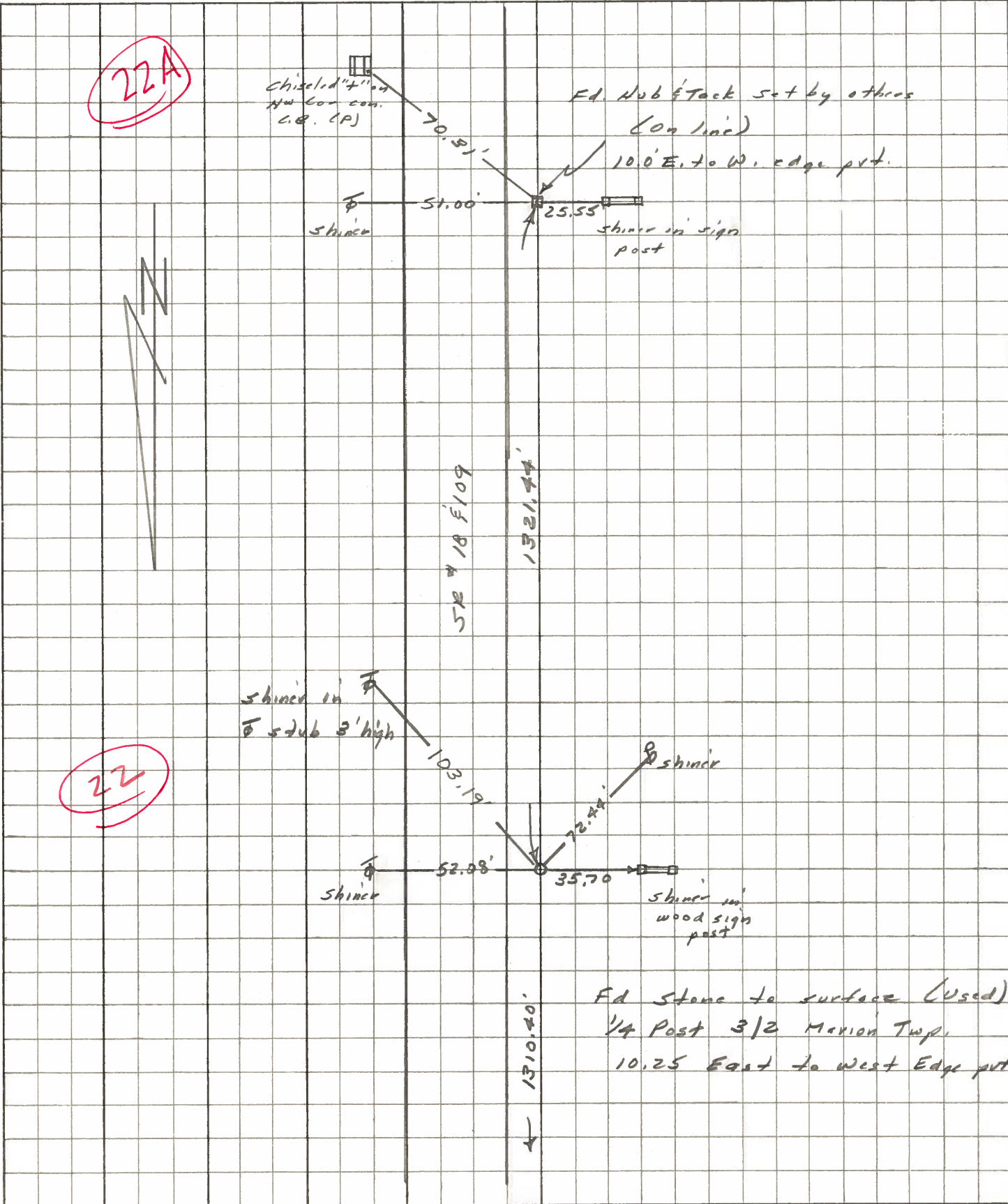


Fd. STONE / depression @ CTR / @ SURFACE
10.25 west of W.F.P.



PERSONNEL	TITLE	PERSONNEL	TITLE	COUNTY	DATE	WEATHER	TEMP.
Stone				Henry	13 May 77	Cloudy	50°
Michalala				#18			
Dennis				Marion Twp			
Curtis							

DESCRIPTION Refs. to Control Points JOB NO. 02999(0)



PERSONNEL	TITLE	PERSONNEL	TITLE	COUNTY	Henry	DATE	23 April 79
Stone				S. R.	18	WEATHER	Cloudy
Michalak				SEC.	Marion Twp.	TEMP.	45°
Denno							
Curtis							

DESCRIPTION Alignment LEFT CENTER LINE RIGHT JOB NO. 02999(0)

