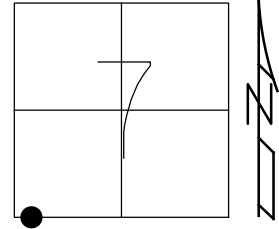


O.D.O.T. DISTRICT 2 SURVEY OFFICE (USE ONLY)

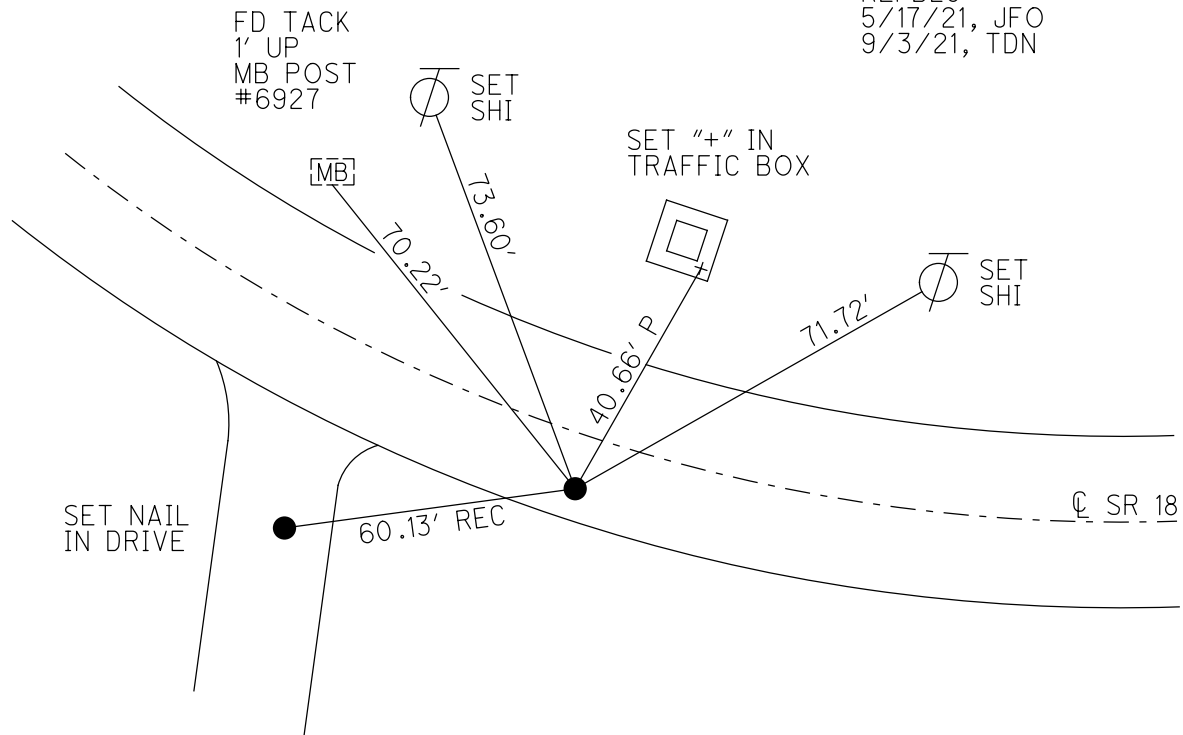
PERSONNEL _____ REFERENCE NO. 29 B SHEET 4 OF 12
 NOTES AUBLE DATE 5/17/21 ROUTE SR 18
 H.C. NIESE WEATHER CLOUDY COUNTY HENRY
 R.C. O'DONNELL TEMP. 68° TOWNSHIP BARTLOW
 DWG BY NIESE PID PAVETRAIN SECTION 7
 T 3 N R 8 E

TYPE MONUMENT MAG/WASHER
 ON SURFACE - ~~BELOW~~ ON
 OFFSET 2.0' TO RT PAVEMENT 8.8' ± : RT
 STATION: 718+41

HORIZ.DATUM: NAD83(2011) GEOID: NAVD88 2012A
 GRID: NORTHING: 571303.772 EASTING: 1556994.166



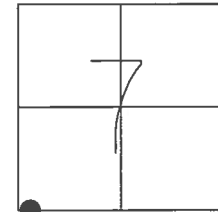
RECORD:
 SET STAKE AS
 PER 1931 PLAN, 4.5' TO
 S. EDGE OF PAVT
 SET SM.R.R.SPIKE
 10/14/86, MDB
 FD SM.R.R.SPIKE
 5/13/10, KPM
 SET MAG/WASHER
 7/27/10, SAH
 FD MAG/WASHER
 REFB29
 5/17/21, JFO
 9/3/21, TDN



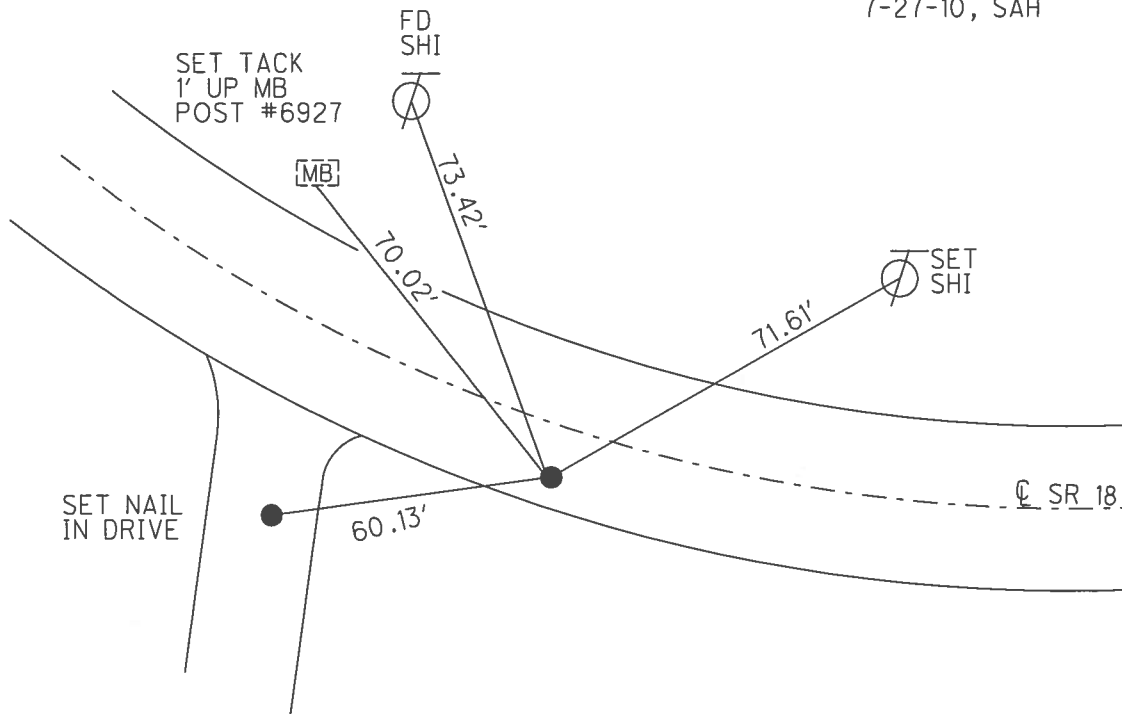
O.D.O.T. DISTRICT 2 SURVEY OFFICE (USE ONLY)

PERSONNEL _____ REFERENCE NO. 29 B SHEET 4 OF 12
 NOTES MOSER DATE 5-13-10 ROUTE SR 18
 H.C. MOSER WEATHER CLOUDY COUNTY HENRY
 R.C. GOLDBERG TEMP. 70° TOWNSHIP MARION
 SECTION 7
 T 3 N R 8 E

TYPE MONUMENT SM.R.R.SPIKE
 ON SURFACE - ~~BELOW~~ ON
~~LEFT~~ - CL PAV'T - RIGHT 8.8'
2.0' TO RT EDGE PAVEMENT
 S.L.M. 718+41
 GRID: NORTHING: 571303.790 EASTING: 1556994.125



RECORD:
 SET STAKE AS
 PER 1931 PLAN, 4.5' TO
 S. EDGE OF PAVT
 SET SM.R.R.SPIKE
 10-14-86, MDB
 SET MAG/WASHER
 7-27-10, SAH



O.D.O.T. DISTRICT 2 SURVEY OFFICE

PERSONNEL

REFERENCE NO. 29B

SHEET 8 OF 13

NOTES MOSER

DATE 5-13-10

ROUTE SR 18

H.C. MOSER

WEATHER CLOUDY

COUNTY HENRY

R.C. GOLDBERG

TEMP. 70°

TOWNSHIP MARION

SECTION 7

T 3 N R 8 E

TYPE MONUMENT SM. RR SPK

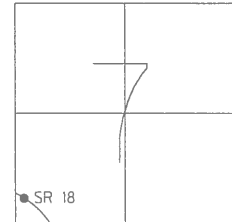
ON SURFACE - ~~BELOW~~ YES

~~LEFT - C PAV'T~~ - RIGHT 8.8'

2.0' TO RT. EDGE PAVEMENT

S.L.M. 718+41

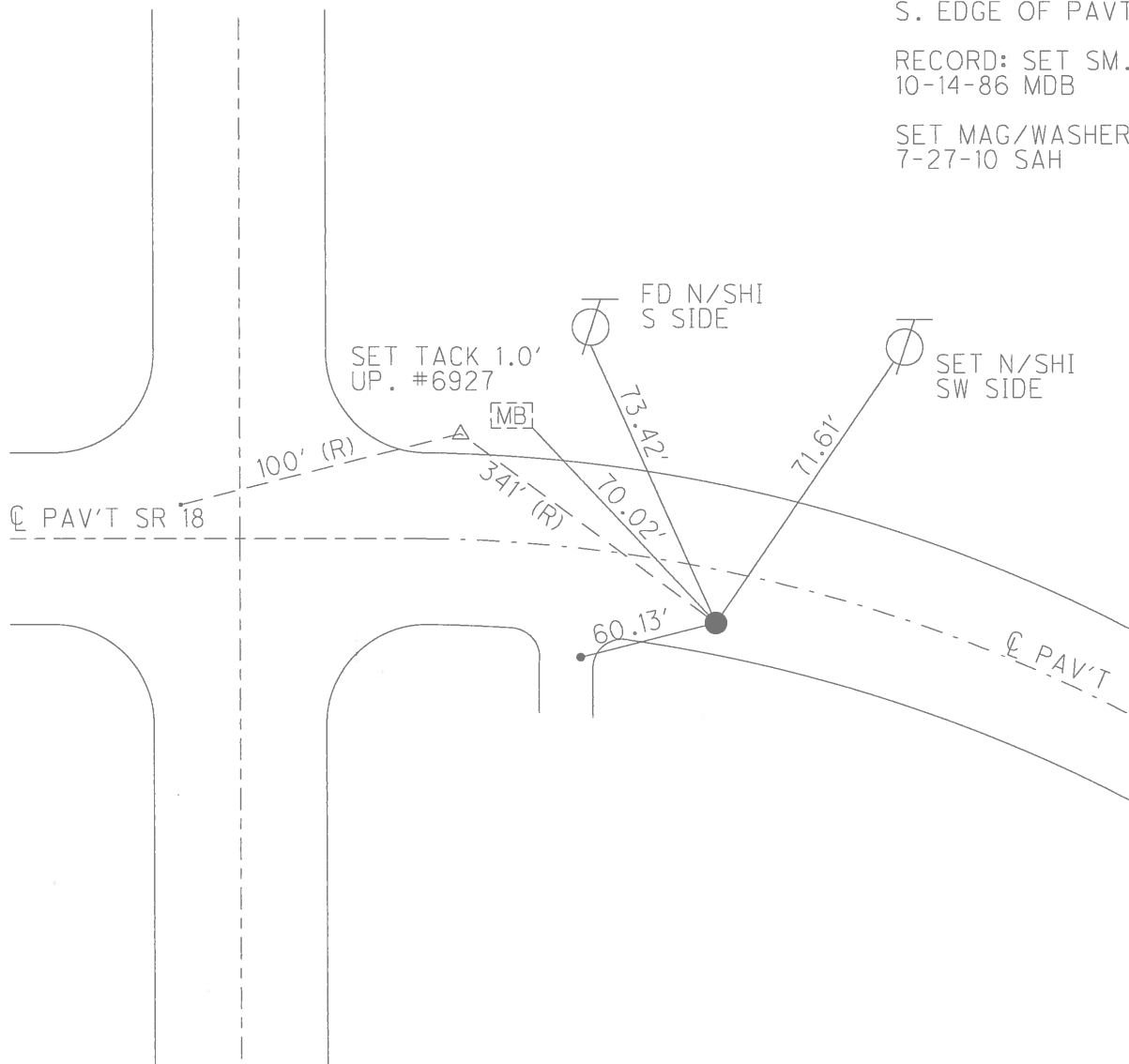
Grid: Northing: 571303.790 Easting: 1556994.125



RECORD: SET STAKE AS PER 1931 PLAN, 4.5' TO S. EDGE OF PAVT

RECORD: SET SM. RR SPK 10-14-86 MDB

SET MAG/WASHER 7-27-10 SAH



O.D.O.T. DISTRICT 2 SURVEY OFFICE

PERSONNEL

REFERENCE NO. 29 A+B

SHEET 8 OF 13

NOTES HUSS

H.C. VAN DUSEN

DATE 8-4-86

ROUTE SR-18

R.C. MOSER

WEATHER SUNNY

COUNTY Henry

TEMP. +84° F

TOWNSHIP Bartlow

SECTION 7

T 3 N R 8 E

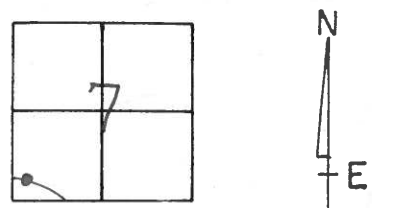
TYPE MONUMENT Sm. RR SPIK

ON SURFACE - BELOW YES

~~LEFT~~ - PAV'T. - RIGHT 8.7

1.7 TO RT EDGE PAVEMENT

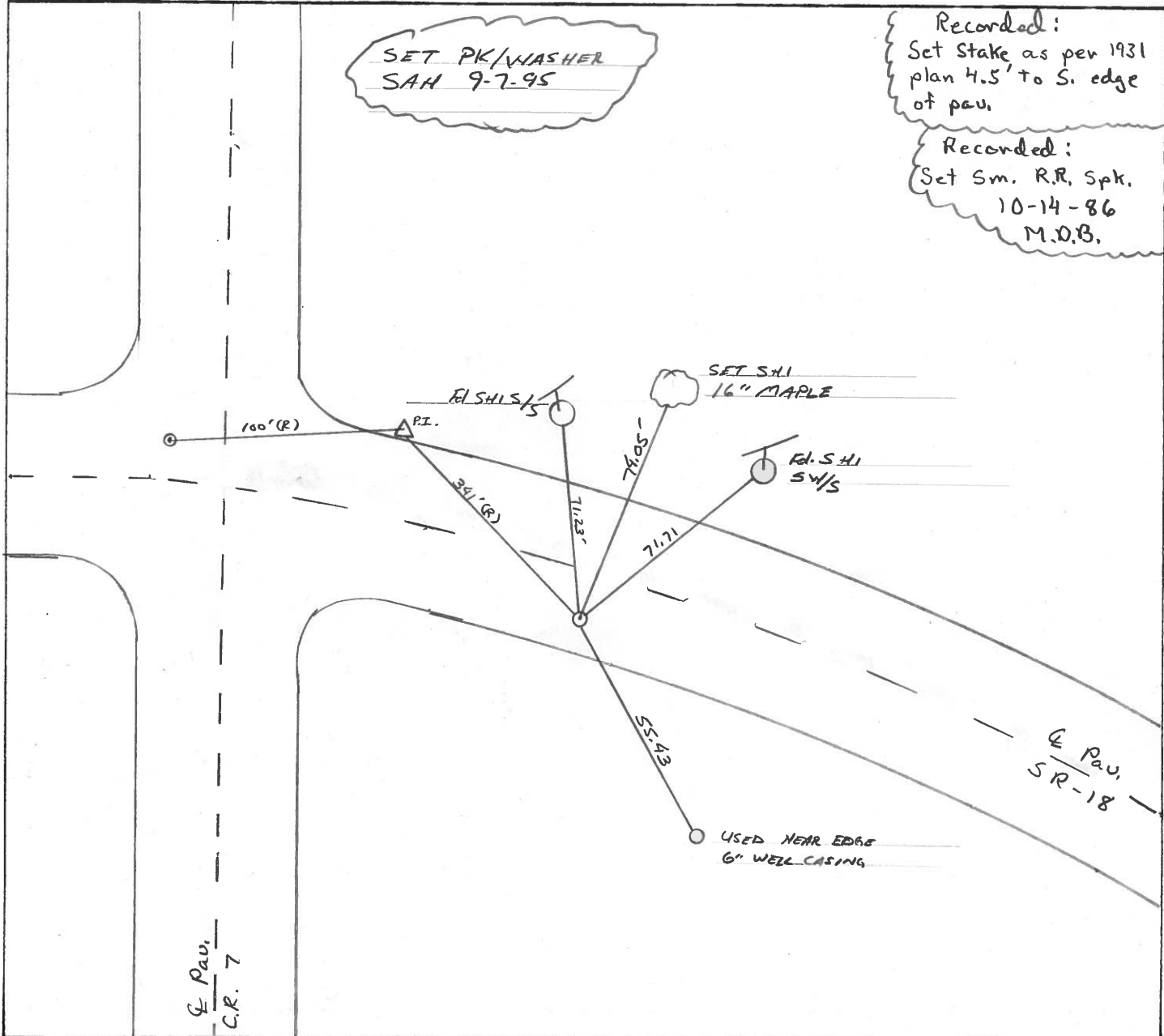
S.L.M. 718+41



SET PK/WASHER
SAH 9-7-95

Recorded:
Set Stake as per 1931
plan 4.5' to S. edge
of pav.

Recorded:
Set Sm. RR, Spk.
10-14-86
M.O.B.



E Pav.
C.R. 7

O.D.O.T. DISTRICT 2 SURVEY OFFICE

PERSONNEL

REFERENCE NO. 29-A+B SHEET OF

NOTES BARNHISEL

H.C. Loehrke

R.C. Sockman

DATE Aug 4, 1986

WEATHER SUNNY

TEMP. +84°

ROUTE SR 18

COUNTY HENRY

TOWNSHIP BARTLOW

SECTION 7

T 3 N 8 E

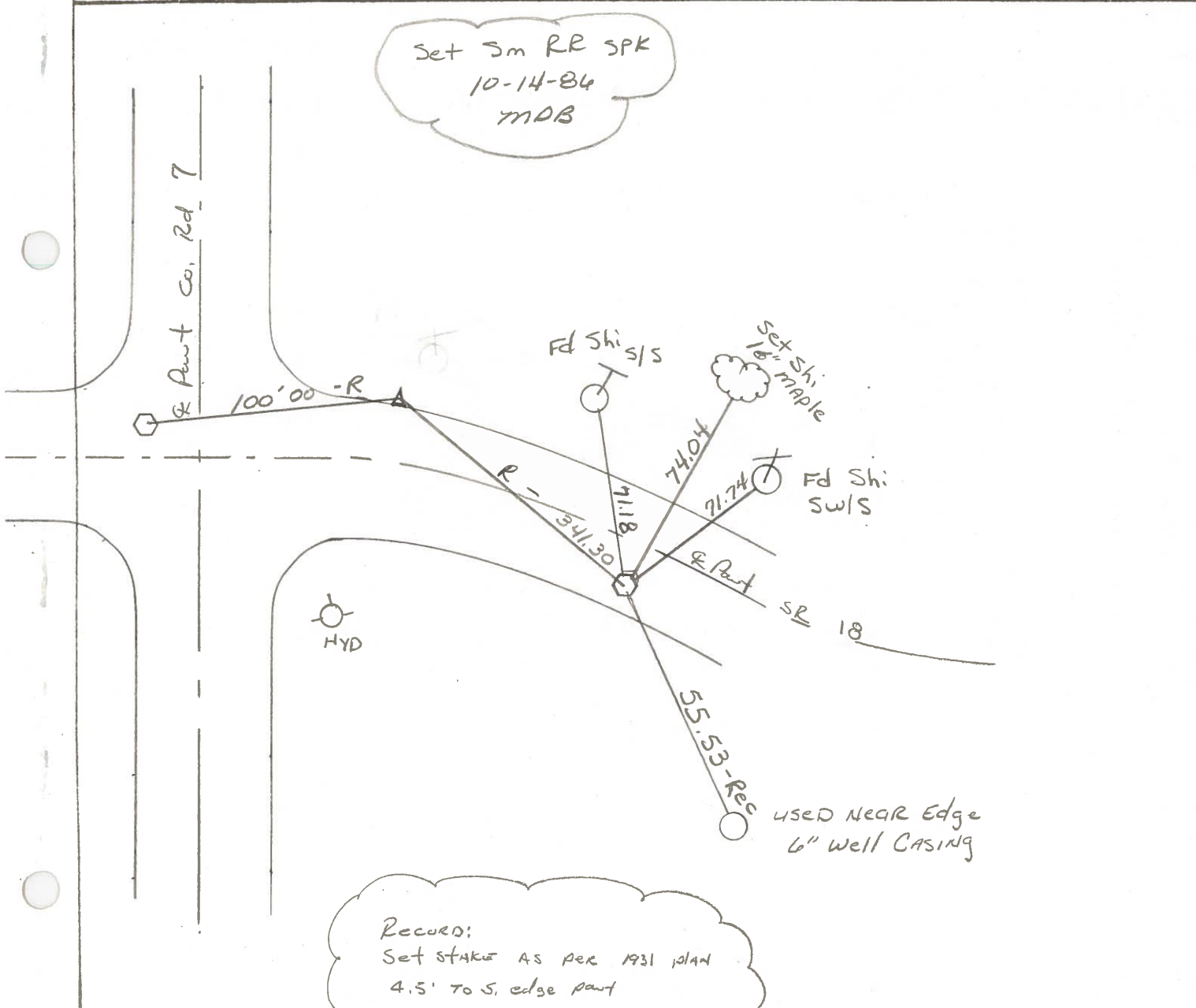
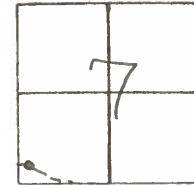
TYPE MONUMENT 5m RR SPK

ON SURFACE - BELOW YES

LEFT - & PAV'T. - RIGHT 5.5

4.5 TO R+ EDGE PAVEMENT

S.L.M. 718+00



Q.D.O.T. DISTRICT 2 SURVEY OFFICE

SHEET _____ OF _____

County HENRY S. R. 18

Date OCT 13, 1982

Township BARTLOW

Weather Partly Clear

Section 7

Temp. +55°

T3N, R8E

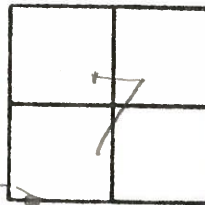
Personnel HOFFMAN

HOUSEHOLDER

LOEBLKE

BARNHISEL

29-B

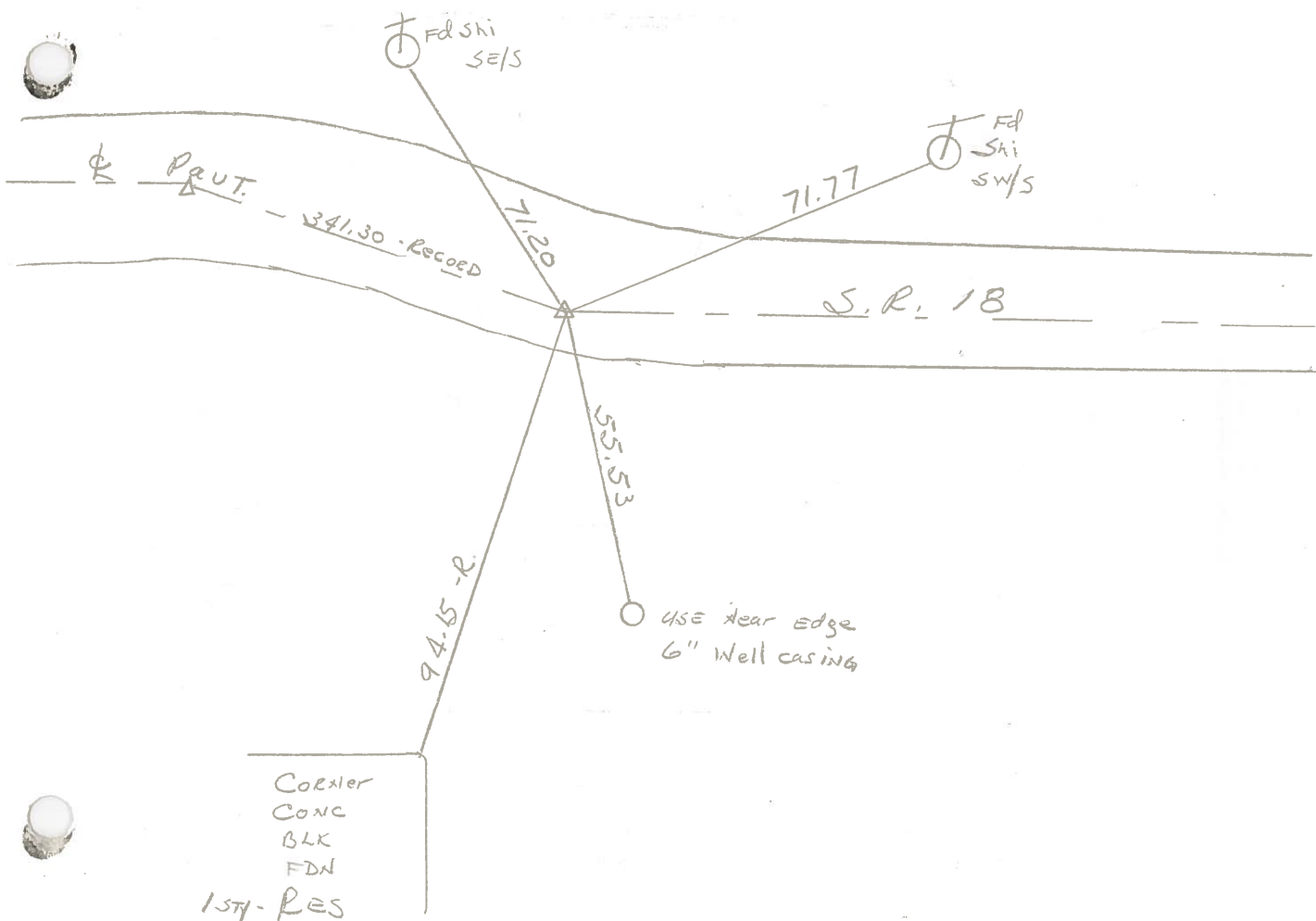


Fd small R.R. spk @ surface

8.3' RT. of & PAUT

1.0' TO S.E.P.

18.0' TO N.E.P.



PERSONNEL TITLE PERSONNEL TITLE

Stone
 Michalak
 Deane
 Curtis

COUNTY Henry DATE 8 May 79

S. R. #18 WEATHER Cool

SEC. Bartlow Twp TEMP. 57°

DESCRIPTION

Alignment

JOB NO. 02999(10)

LEFT

CENTER LINE

RIGHT

