

PERSONNEL TITLE PERSONNEL TITLE
 To J. Rasputin Tretter
 & Dave Younger
 from Bruster
 Beacher
 Moehler
 Knapper

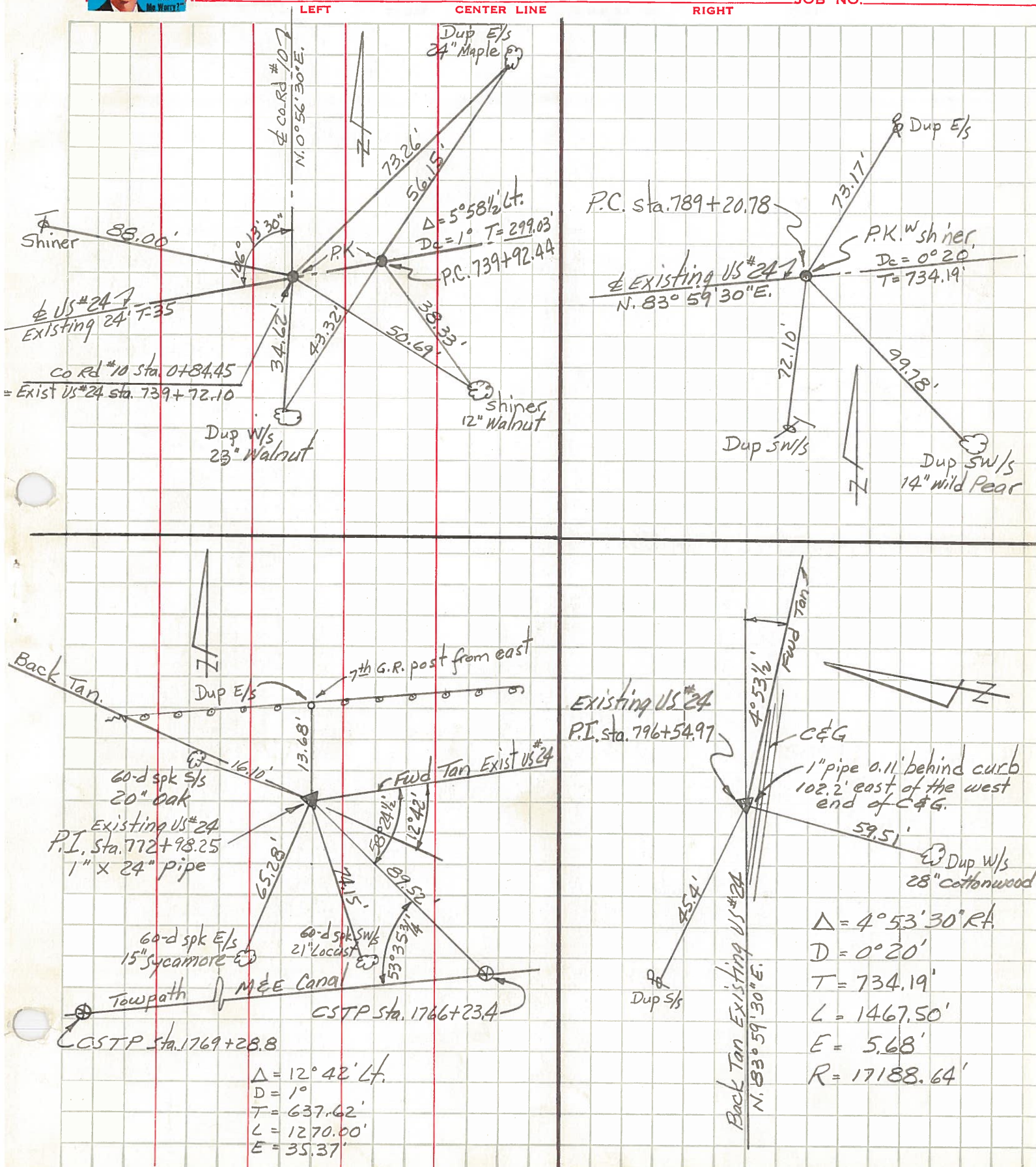
COUNTY HENRY DATE Feb 1965

S. R. US #24 Bypass WEATHER

SEC. Liberty Twp. TEMP.


CONTROL POINTS

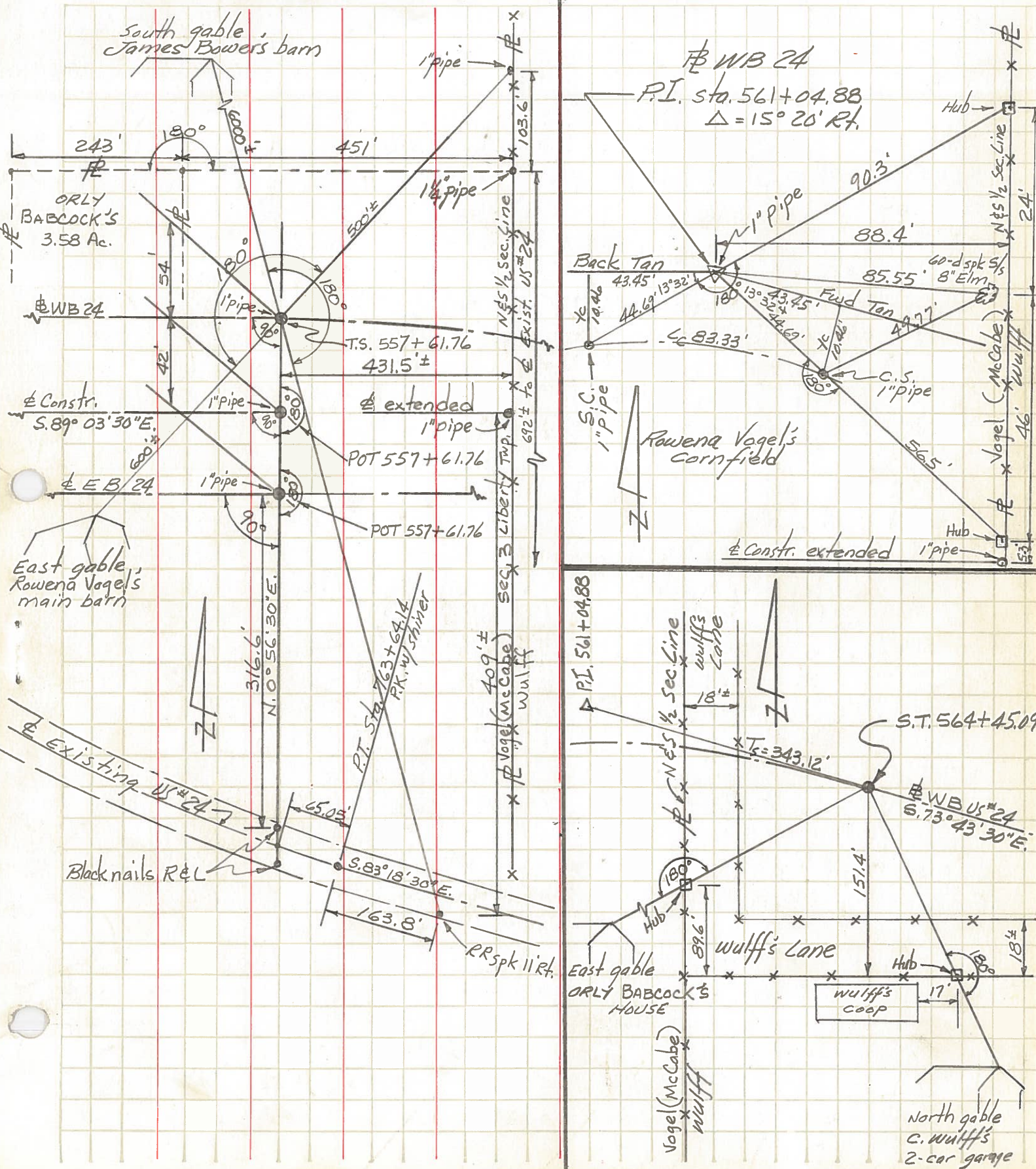
JOB NO.



$\Delta = 12^\circ 42' \text{ Lt.}$
 $D = 1^\circ$
 $T = 637.62'$
 $L = 1270.00'$
 $E = 35.37'$

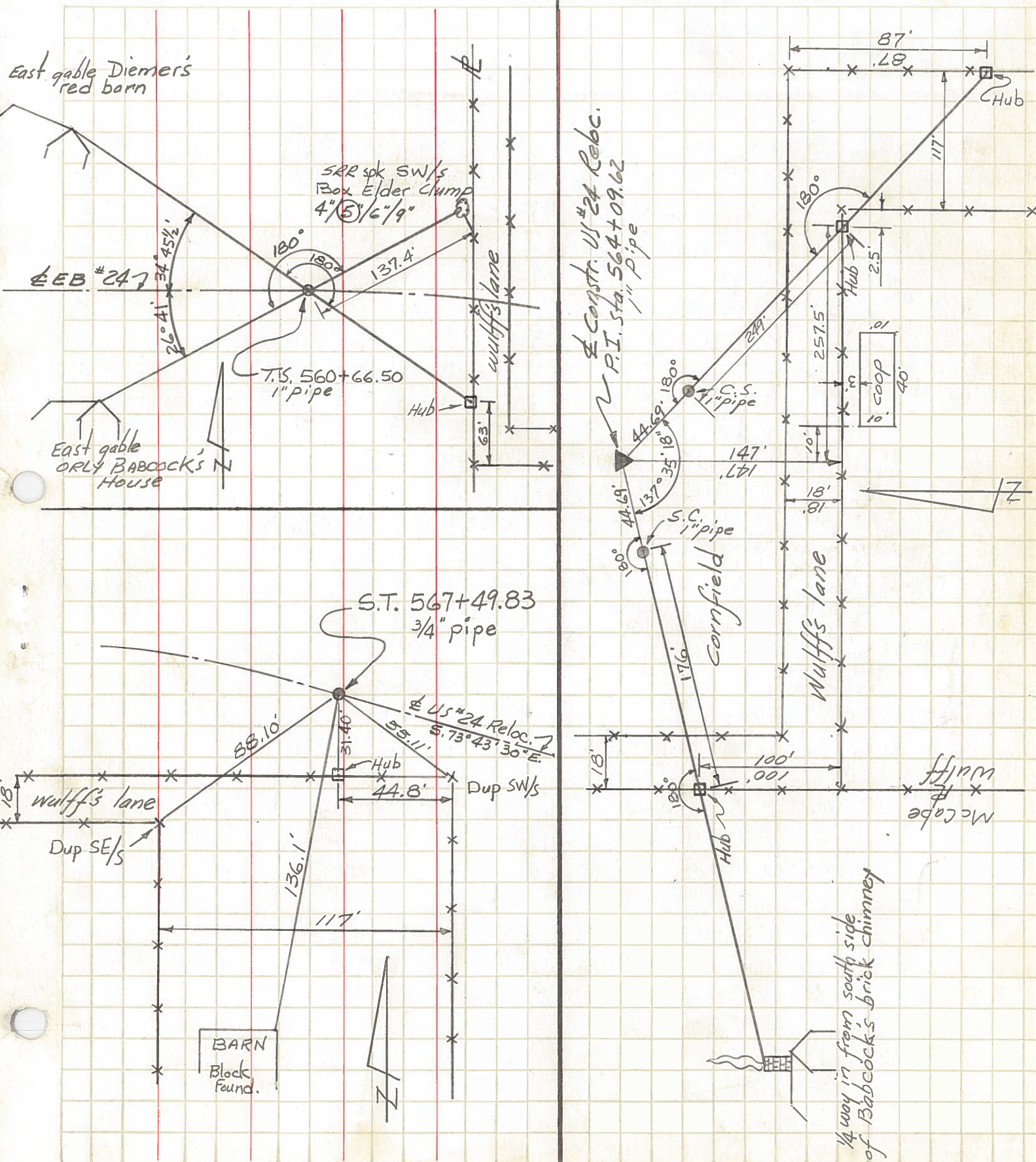
$\Delta = 4^\circ 53' 30'' \text{ RA}$
 $D = 0^\circ 20'$
 $T = 734.19'$
 $L = 1467.50'$
 $E = 5.68'$
 $R = 17188.64'$

PERSONNEL	TITLE	PERSONNEL	TITLE	COUNTY	DATE	WEATHER	TEMP.	JOB NO.
To Smoky Tretter & Dave Younger from Bruster Becher Moehler Knapper	ALFRED E. NEUMAN  4 PRESIDENT			HENRY	Jan 65			
DESCRIPTION				S. R.	US #24 Bypass			
CONTROL POINTS				SEC	Rowena's Cut-off			
LEFT	CENTER LINE	RIGHT						



PERSONNEL	TITLE	PERSONNEL	TITLE	COUNTY	DATE	WEATHER	TEMP.
To Smoky Tretter & Dave Younger from Bruster Becher Moehler Knapper				HENRY	Feb '65		
				S. R. US #24 Bypass			
				SEC. Rowena's Cut-off			

DESCRIPTION	CONTROL POINTS	JOB NO.
	LEFT CENTER LINE RIGHT	



East gable Diemers red barn

SRR spk SW/s Box Elder clump 4" 5 1/2" 9"

T.S. 560+66.50 1" pipe

East gable ORLY BABCOCK'S N House

S.T. 567+49.83 3/4" pipe

US #24 Reloc. 5.73° 43' 30" E

Constr. US #24 Reloc. P.I. Sta. 564+09.62 1" pipe

Cornfield

Wulffs lane

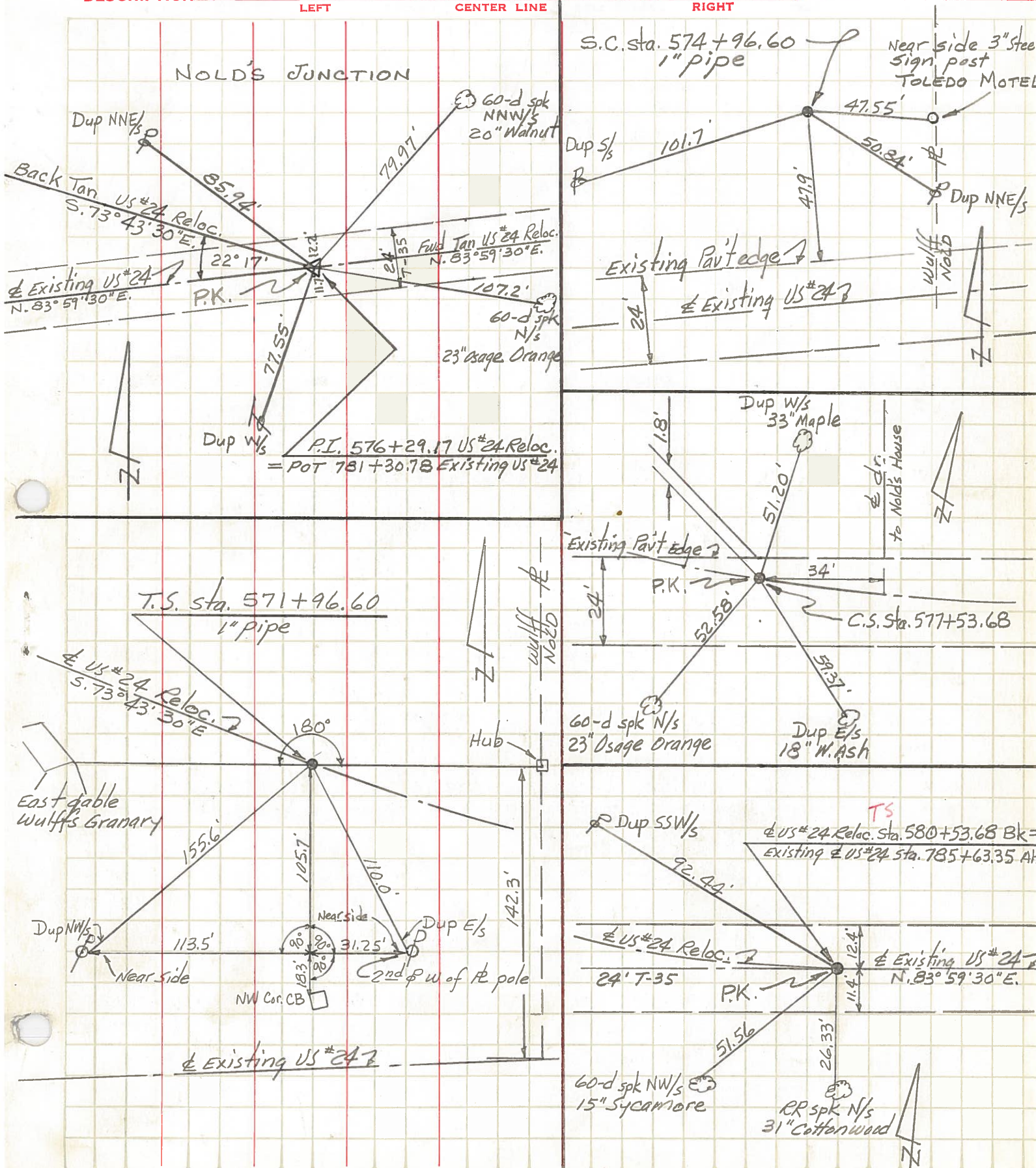
Wulff McCabe

1/4 way in from south side of Babcock's brick chimney

BARN Block Found.



PERSONNEL TITLE PERSONNEL TITLE COUNTY HENRY DATE Feb 1965
 To J. Rasputin Tretter & Dave Younger from Bruster Beacher Moehler Knapper
 S. R. US #24 Bypass WEATHER
 SEC. NOLD'S JUNCTION TEMP.
 DESCRIPTION CONTROL POINTS JOB NO.



PERSONNEL	TITLE	PERSONNEL	TITLE	COUNTY	DATE
Beach				Henry	Apr. 29 - 19
Ruffer				S. R. US-24	WEATHER
Knäpe				SEC. 11.22	TEMP.
Delventhal					

DESCRIPTION Const. JOB NO. _____

