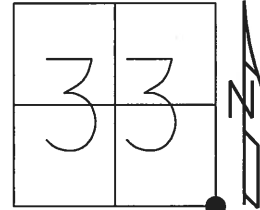


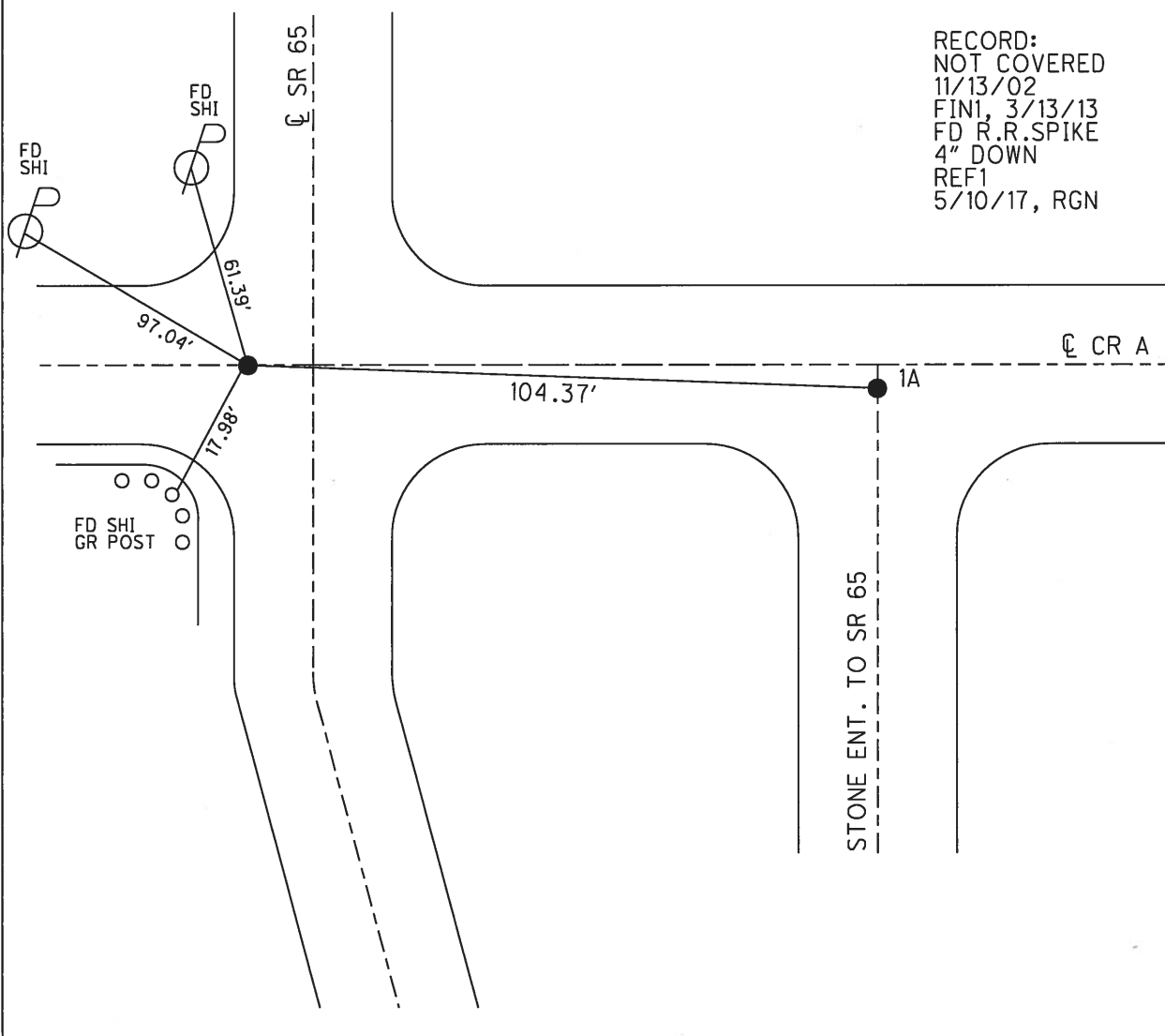
O.D.O.T. DISTRICT 2 SURVEY OFFICE (USE ONLY)

PERSONNEL _____ REFERENCE NO. 1 SHEET 1 OF 42
 NOTES RHOADES DATE 5/3/17 ROUTE SR 65
 H.C. O'DONNELL WEATHER SUNNY COUNTY HENRY
 R.C. HELDMAN TEMP. 46° TOWNSHIP BARTLOW
 SECTION 33
 T 3 N R 8 E

TYPE MONUMENT R.R.SPIKE
~~ON SURFACE~~ - BELOW 0.2'
 LEFT - ℄ PAV'T - ~~RIGHT~~ 6.9'
2.6' TO LT. EDGE PAVEMENT
 S.L.M. 0+00



GRID: NORTHING: 550022.006 EASTING: 1572379.303



O.D.O.T. DISTRICT 2 SURVEY OFFICE (USE ONLY)

PERSONNEL

REFERENCE NO. 1

SHEET 1 OF 42

NOTES BROWN

DATE 09-09-02

ROUTE SR 65

H.C. HOMAN

WEATHER SUNNY

COUNTY HENRY

R.C. BROWN

TEMP. 70°

TOWNSHIP BARTLOW

SECTION 33

T 3 N R 8 E

TYPE MONUMENT _____ RR SPK _____

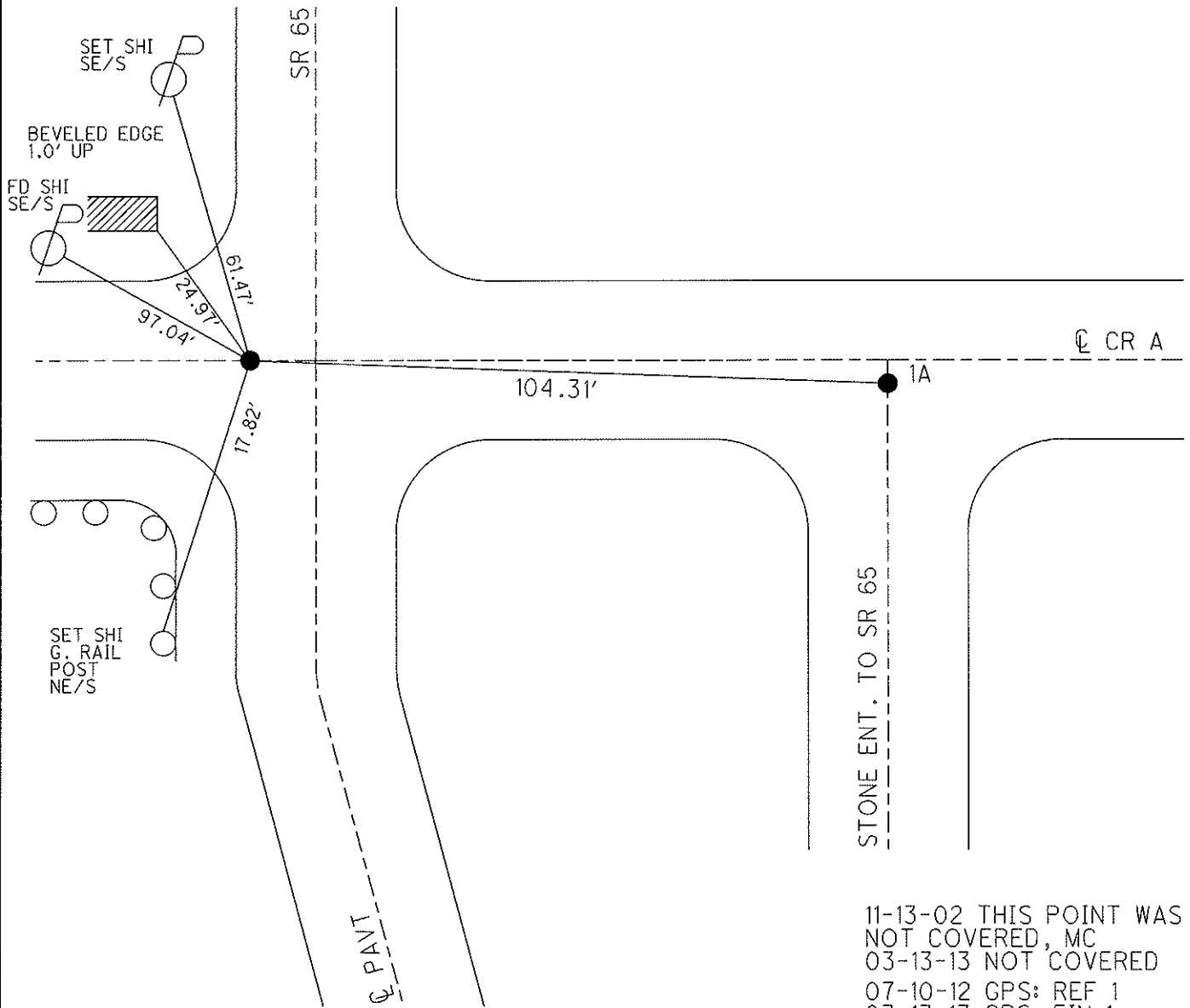
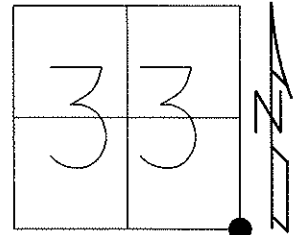
ON SURFACE - BELOW _____ 0.2' _____

LEFT - \bar{C} PAV'T - RIGHT _____ 6.9' _____

2.6' TO LT EDGE PAVEMENT

S.L.M. _____ 0+00 _____

Grid: Northing: 1572379.290 Easting: 1572379.290



11-13-02 THIS POINT WAS NOT COVERED, MC
 03-13-13 NOT COVERED
 07-10-12 GPS: REF 1
 03-13-13 GPS: FIN 1

O.D.O.T. DISTRICT 2 SURVEY OFFICE

PERSONNEL

REFERENCE NO. 1

SHEET 1 OF 29

NOTES Brown

H.C. Homan

R.C. Brown

DATE 9-9-02

WEATHER SUNNY

TEMP. +70°

ROUTE 65

COUNTY HENRY

TOWNSHIP BARTLOW

SECTION 33

T3 N R 8 E

DRAWN - BARNHISEL

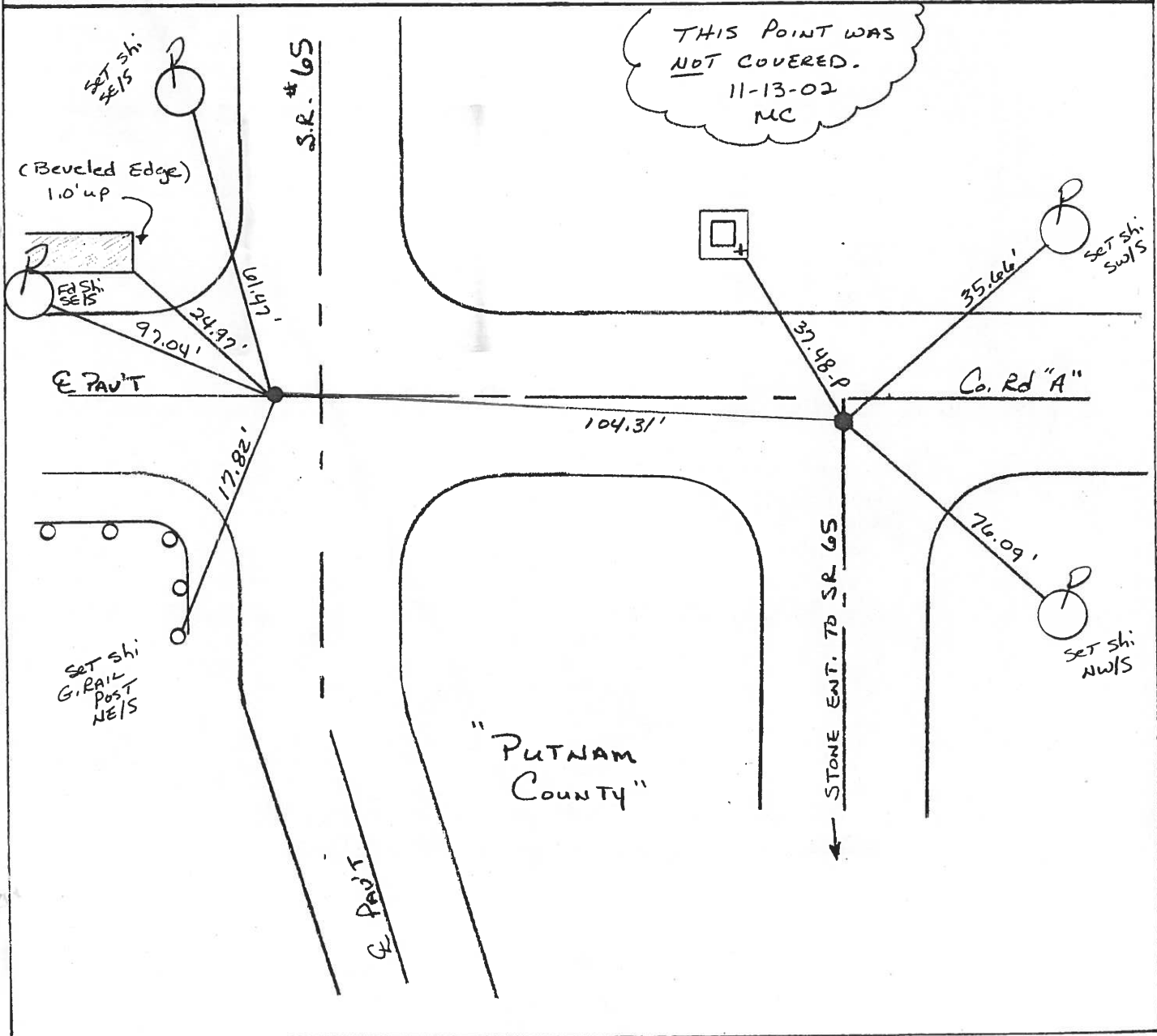
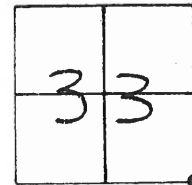
TYPE MONUMENT PK NAIL

ON SURFACE - BELOW 1"

LEFT - 6 PAV'T. - ~~RIGHT~~ 4.9'

2.6' TO LT EDGE PAVEMENT

S.L.M. 0+00



O.D.O.T. DISTRICT 2 SURVEY OFFICE

PERSONNEL

REFERENCE NO. 1

SHEET 1 OF 18

NOTES BARNHISEL

H.C. KUSZ

DATE 2-21-93

ROUTE 65

R.C. BARNHISEL

WEATHER SUNNY

COUNTY HENRY

OTTO P

TEMP. +75° F

TOWNSHIP BAETLOW

SECTION 33

T 3 N R 8 E

TYPE MONUMENT P.K. + WASHER

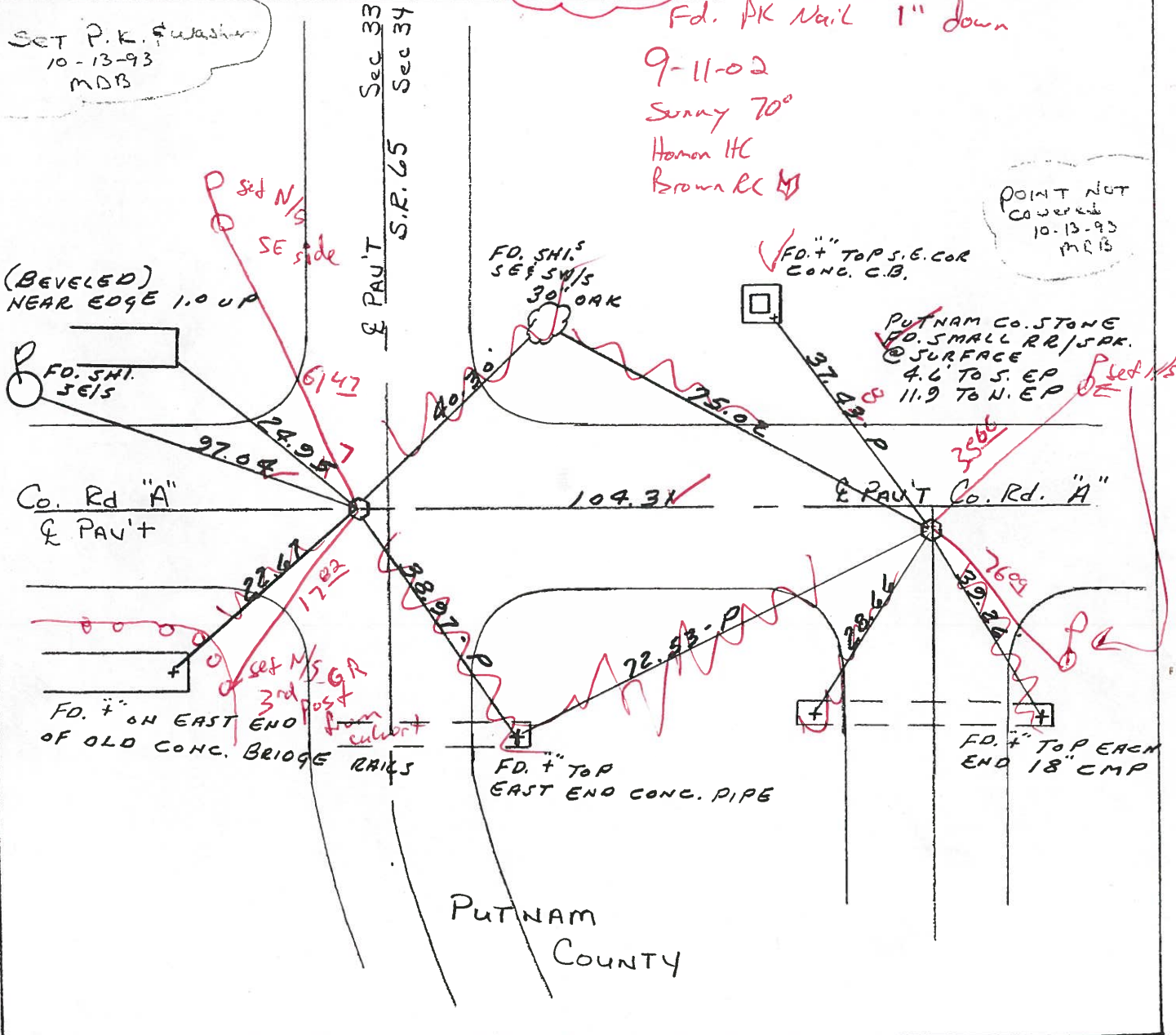
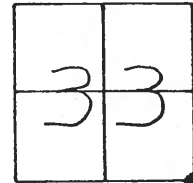
ON SURFACE - ~~BELOW~~ yes below 1"

LEFT- & PAU'T. - RIGHT 6.9

2.6 TO 4.7 EDGE PAVEMENT

S.L.M. 0+00

NOT COVERED



POINT NOT COVERED
10-13-93
MRB

Fd. PK Nail 1" down
9-11-02
Sunny 70°
Homon HC
Brown CC

PUTNAM CO. STONE
FD. SMALL RR/SRK.
@ SURFACE
4.6' TO S. EP
11.9' TO N. EP

Set N/S
SE side

Set N/S GR
3rd post
from culvert

PUTNAM
COUNTY

Resurveyed 1993

O.D.O.T. DISTRICT 2 SURVEY OFFICE

PERSONNEL

REFERENCE NO. 1

SHEET OF

NOTES Hoffman

H.C. BARNHISEL

R.C. LOSHRKE

DATE 3-26-85

WEATHER clear - windy

TEMP. 60°

ROUTE SR 65

COUNTY HENRY

TOWNSHIP BARTLOW

SECTION 33

T 3 N R 8 E

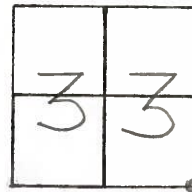
TYPE MONUMENT SMALL RR SPIKE

ON SURFACE BELOW

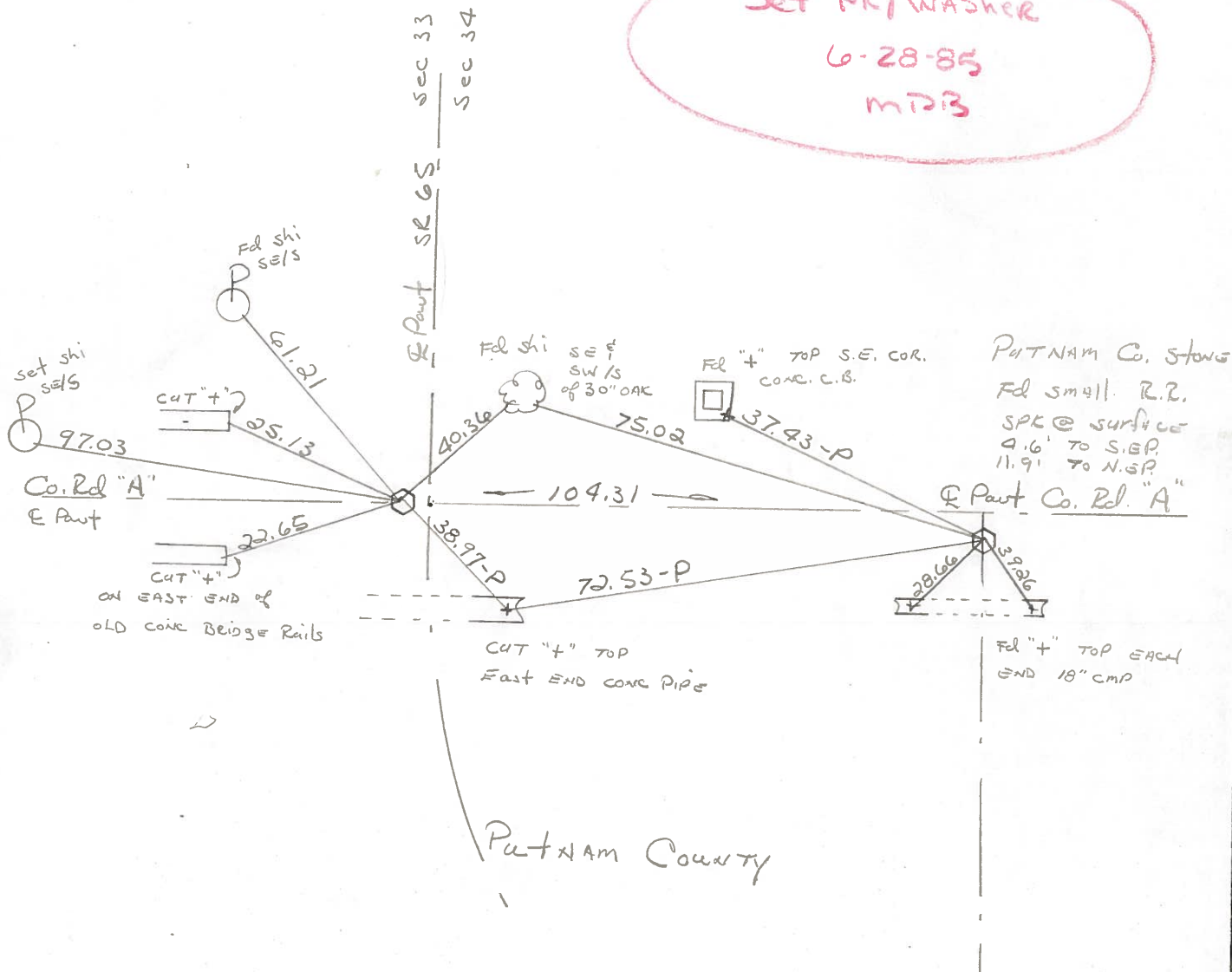
LEFT - C PAV'T. - RIGHT 7.2'

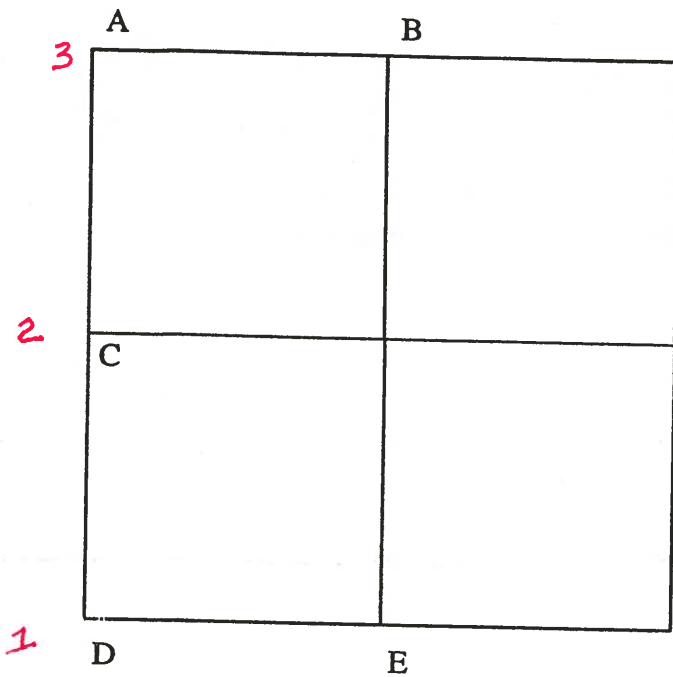
TO - EDGE PAVEMENT

S.L.M. 0 + 00



Set PK/Washer
 6-28-85
 MPB





COUNTY: HENRY

TOWNSHIP: BARTLOW

T-3-N R-8-E

SECTION: 34

8/4/82 R.W., D.B., J.B.

- C-
2 Found small RR spike 2' +/- west of center line pavement.
31.82' N.E. to shiner SW/S telephone pole.
30.48' S.E. to "+" N.E. cor. catch basin.
28.21' S.W. to "+" west end 12" conc. pipe. (P)

8/4/82 R.W., D.B., J.B.

- D-
1 Found small R.R. spike 7.8' west of centerline pavement.
24.78' N.W. to S.E. cor. conc. bridge rail
47.12' W.N.W. to duplex S/S telephone pole
61.22' N.W. to nail/shiner SE/S power pole
40.36' N.E. to nail/shiner SE/S 30" Oak
73.75' E.N.E. to "+" S.E. cor. catch basin (P)
40.74' S.E. to "+" N.E. cor. catch basin (P)
39.30' S.E. to nail/ shiner NW/S telephone pole
22.47' S.W. to N.E. cor. bridge rail

8/11/82 R.W., D.B., J.B.

- E- Found stone (6" x 7" x 10") 12" below road surface. Placed center punched R.R. spike on surface over high point of stone. P.K.'s 6' N.E. & N.W. Stone is on the south edge of pavement.
24.18' N.W. to 5/8" iron pin on north edge of pavement
26.45' N.E. to 5/8" iron pin on north edge of pavement
82.84' E. to iron pin @ N1/4 post; Section 3; Van Buren Twp.; Putnam Co.

9-18-02

Mikes:
Henry County Engineer
MOST RECENT REF. TIES.

WORD FROM CONSTRUCTION:
WORK WILL BEGIN AT
HENRY/PUTNAM CO. LINE.

PERSONNEL TITLE PERSONNEL TITLE
 BURNSIDE _____ KIJOWSKI _____
 SMITH _____
 BOWERS _____
 MEAD _____

COUNTY HENRY DATE 7-26-74
 S. R. 65 WEATHER PT. CLOUDY
 SEC. 33, BARTLOW TWP TEMP. +82°

DESCRIPTION REF. TO SEC. COR. LEFT CENTER LINE RIGHT JOB NO.

