

O.D.O.T. DISTRICT 2 SURVEY OFFICE (USE ONLY)

PERSONNEL	REFERENCE NO.	<u>19</u>	SHEET	<u>22</u>	OF	<u>42</u>
NOTES	<u>RHOADES</u>	DATE	<u>5/8/17</u>	ROUTE	<u>SR 65</u>	
H.C.	<u>O'DONNELL</u>	WEATHER	<u>SUNNY</u>	COUNTY	<u>HENRY</u>	
R.C.	<u>RHOADES</u>	TEMP.	<u>44°</u>	TOWNSHIP	<u>RICHFIELD</u>	
				SECTION	<u>21</u>	
				T	<u>4</u>	N
				R	<u>8</u>	E

TYPE MONUMENT MAG SHANK

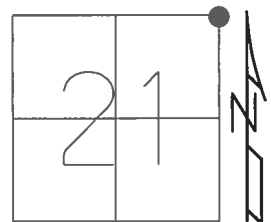
~~ON SURFACE~~ - BELOW ON \_\_\_\_\_

LEFT - ☉ PAV'T - ~~RIGHT~~ 0.5', 7' S. OF ☉ CR J

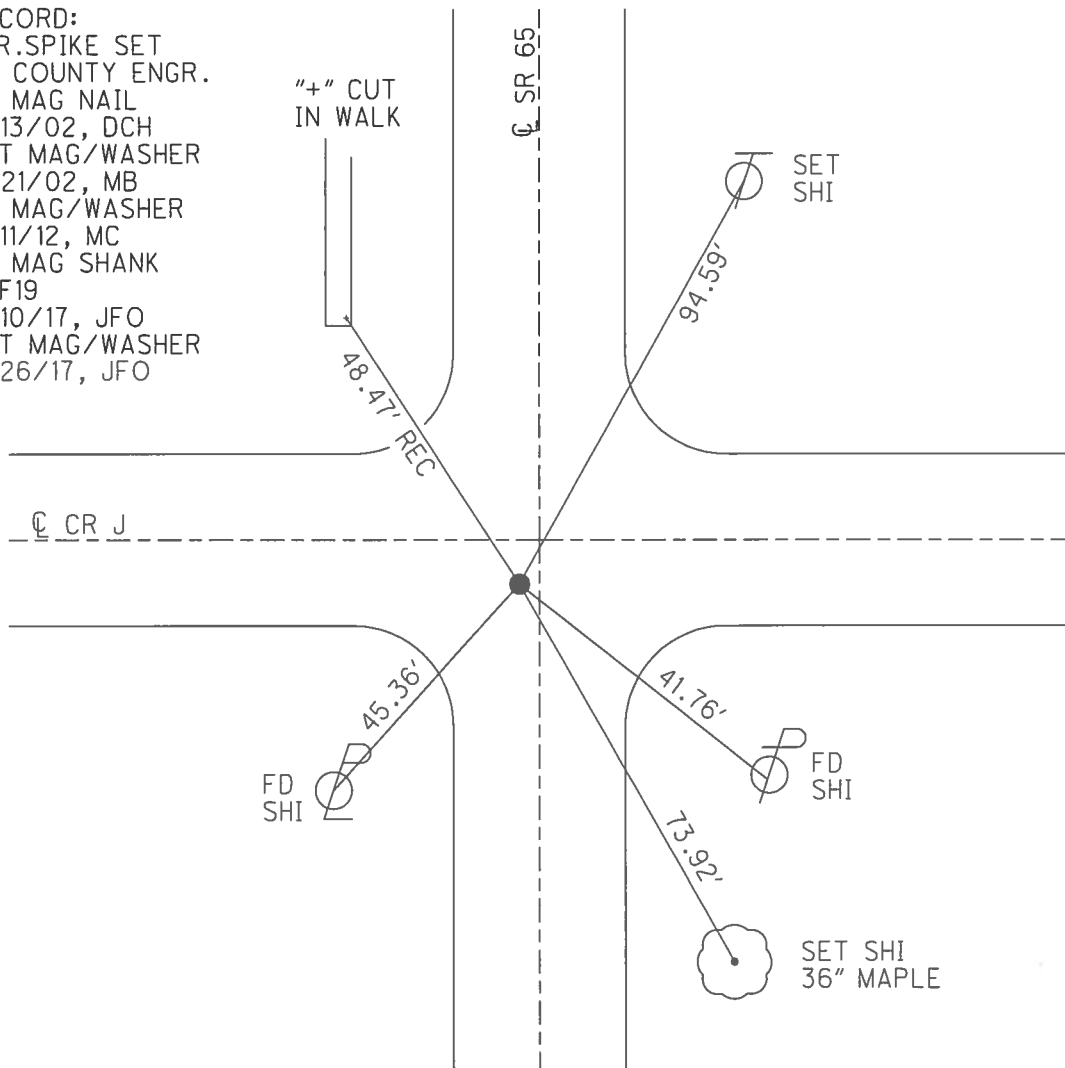
- TO - EDGE PAVEMENT

S.L.M. 476+55

GRID: NORTHING: 597746.184 EASTING: 1572573.835



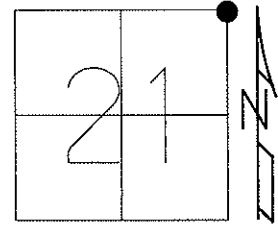
RECORD:  
 R.R.SPIKE SET  
 BY COUNTY ENGR.  
 FD MAG NAIL  
 9/13/02, DCH  
 SET MAG/WASHER  
 11/21/02, MB  
 FD MAG/WASHER  
 7/11/12, MC  
 FD MAG SHANK  
 REF19  
 5/10/17, JFO  
 SET MAG/WASHER  
 9/26/17, JFO



O.D.O.T. DISTRICT 2 SURVEY OFFICE (USE ONLY)

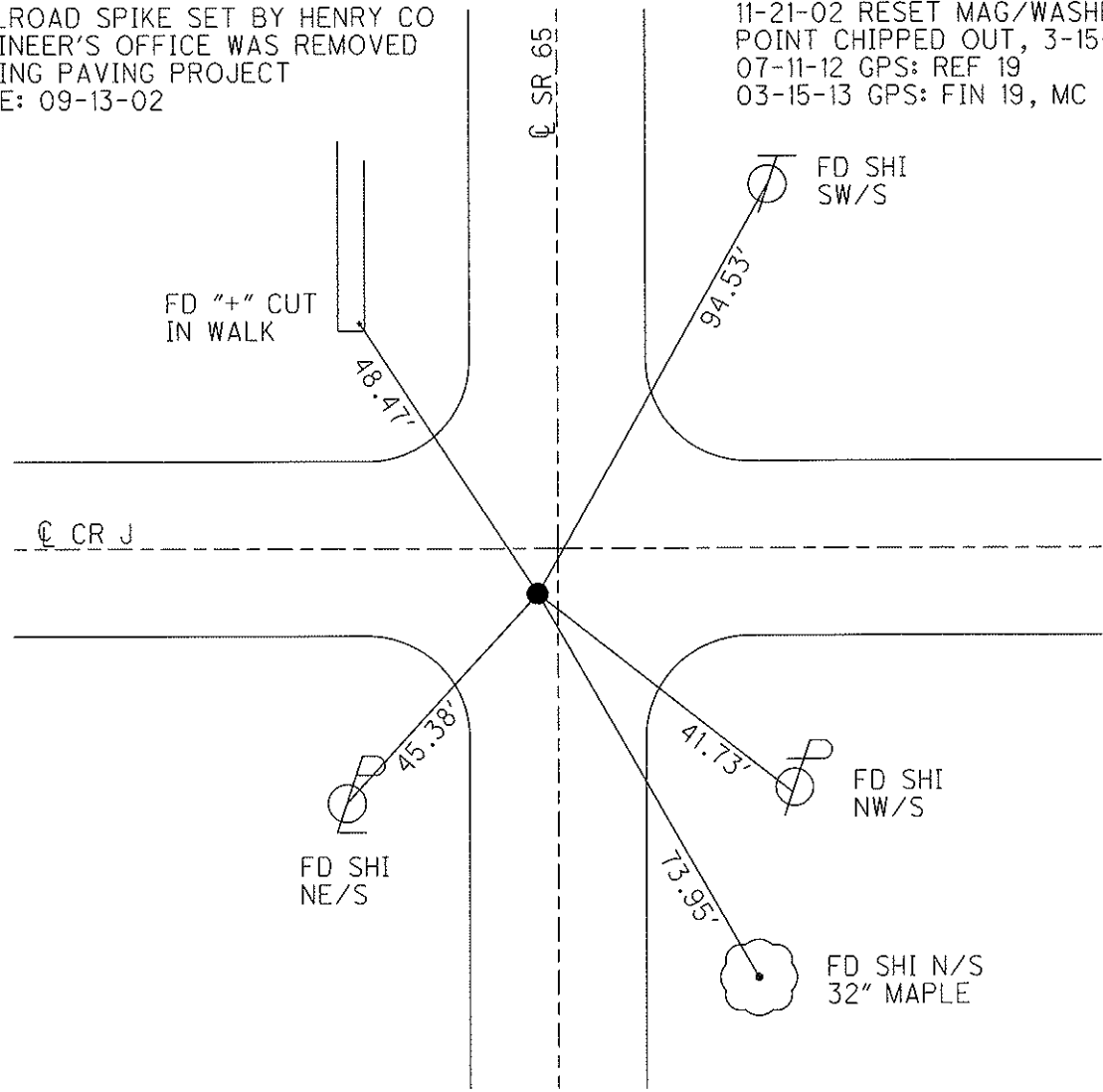
PERSONNEL	REFERENCE NO. <u>19</u>	SHEET <u>22</u> OF <u>42</u>
NOTES <u>BARNHEISEL</u>	DATE <u>9/13/02</u>	ROUTE <u>SR 65</u>
H.C. <u>HOMAN</u>	WEATHER <u>SUNNY</u>	COUNTY <u>HENRY</u>
R.C. <u>BEAUMONT</u>	TEMP. <u>70°</u>	TOWNSHIP <u>RICHFIELD</u>
		SECTION <u>21</u>
		T <u>4</u> N R <u>8</u> E

TYPE MONUMENT MAG / WASHER  
~~ON SURFACE~~ - BELOW 3.5"  
 LEFT - Q PAV'T - ~~RIGHT~~ 0.5', (7.0' SOF Q CR J)  
TO EDGE PAVEMENT  
 S.L.M. 476+55  
 Grid: Northing: 597746.212 Easting: 1572573.867



RAILROAD SPIKE SET BY HENRY CO  
 ENGINEER'S OFFICE WAS REMOVED  
 DURING PAVING PROJECT  
 DATE: 09-13-02

11-21-02 RESET MAG/WASHER, MB  
 POINT CHIPPED OUT, 3-15-13  
 07-11-12 GPS: REF 19  
 03-15-13 GPS: FIN 19, MC



O.D.O.T. DISTRICT 2 SURVEY OFFICE

PERSONNEL

REFERENCE NO. 19

SHEET 20 OF 29

NOTES BARNHISEL

H.C. Homan

DATE 9-13-02

ROUTE 65

R.C. Beaumont

WEATHER SUNNY

COUNTY HENRY

TEMP. +70°

TOWNSHIP RICHFIELD

SECTION 21

T 4 N R 8 E

TYPE MONUMENT Lg RR Spk

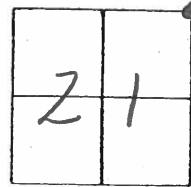
~~ON~~ SURFACE - BELOW 3.5"

LEFT - 0 PAV'T. - RIGHT 0.5'

- TO - EDGE PAVEMENT

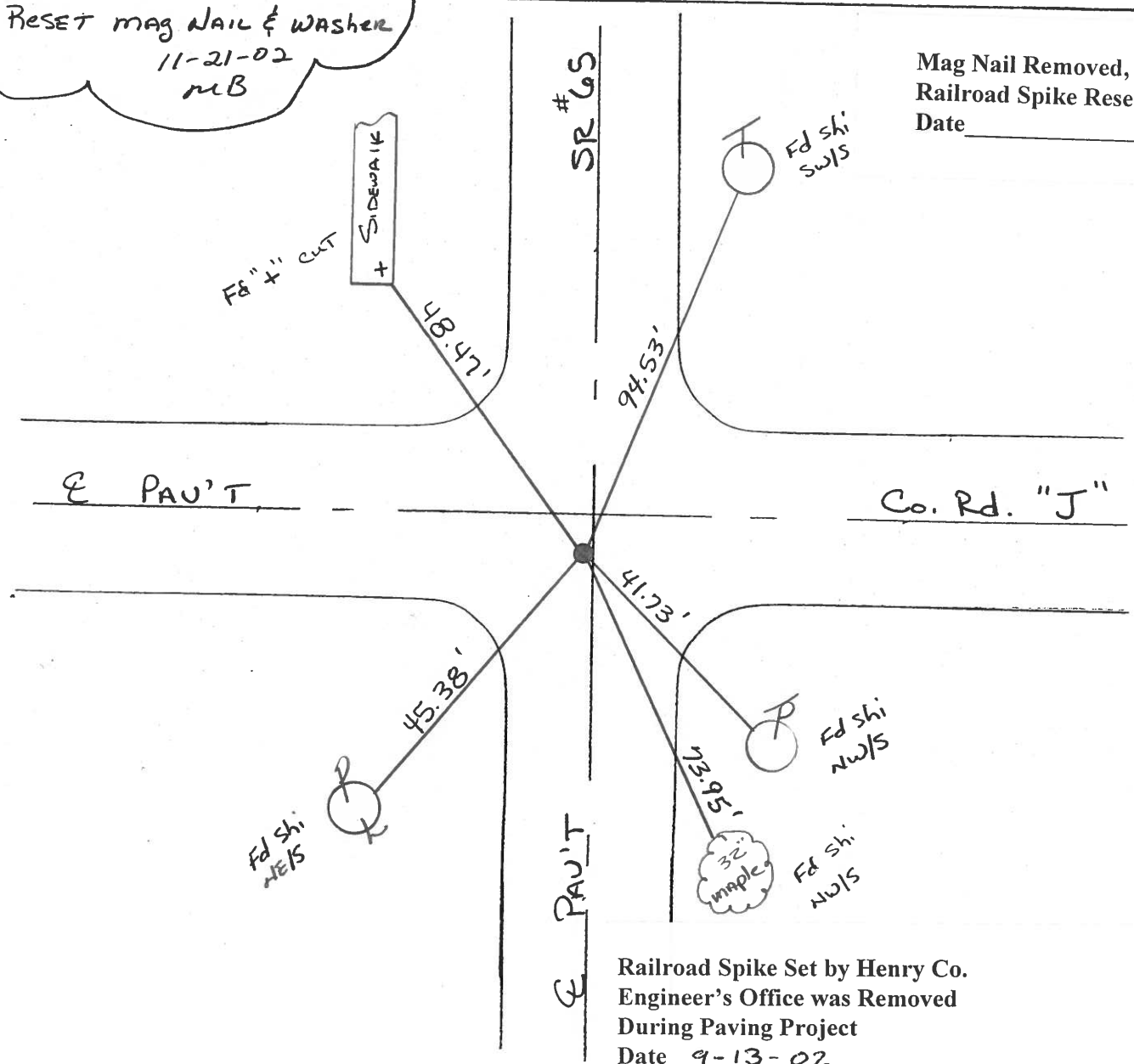
S.L.M. 476+55

7.0' S. of E Co. Rd "J"



RESET mag NAIL & WASHER  
11-21-02  
MB

Mag Nail Removed,  
Railroad Spike Reset  
Date \_\_\_\_\_



Railroad Spike Set by Henry Co.  
Engineer's Office was Removed  
During Paving Project  
Date 9-13-02

# O.D.O.T. DISTRICT 2 SURVEY OFFICE

PERSONNEL

REFERENCE NO. 19

SHEET      OF     

NOTES BARNHISEL ✓

9-13-02

H.C. " " DH

DATE 4-11-90

ROUTE 65

R.C. HOFFMAN CB

WEATHER SUNNY ✓

COUNTY HENRY

TEMP. +35° +70

TOWNSHIP Richfield

SECTION 21

T 4 N R 8 E

RR SPIK Removed

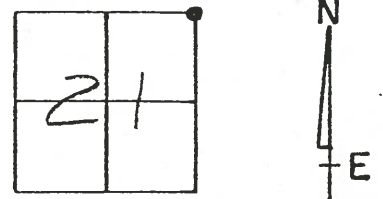
TYPE MONUMENT P.K. & Washer

ON SURFACE - BELOW yes 3 1/2

LEFT - ☉ PAV'T. - RIGHT 0.5

- TO - EDGE PAVEMENT 7.0 S. OF E. CORNER

S.L.M. ~~476+66~~ 470+02 ~~476+55~~

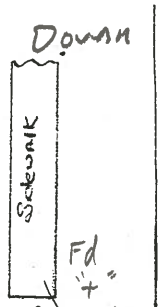


Set P.K. & Washer  
5-15-90  
YMS

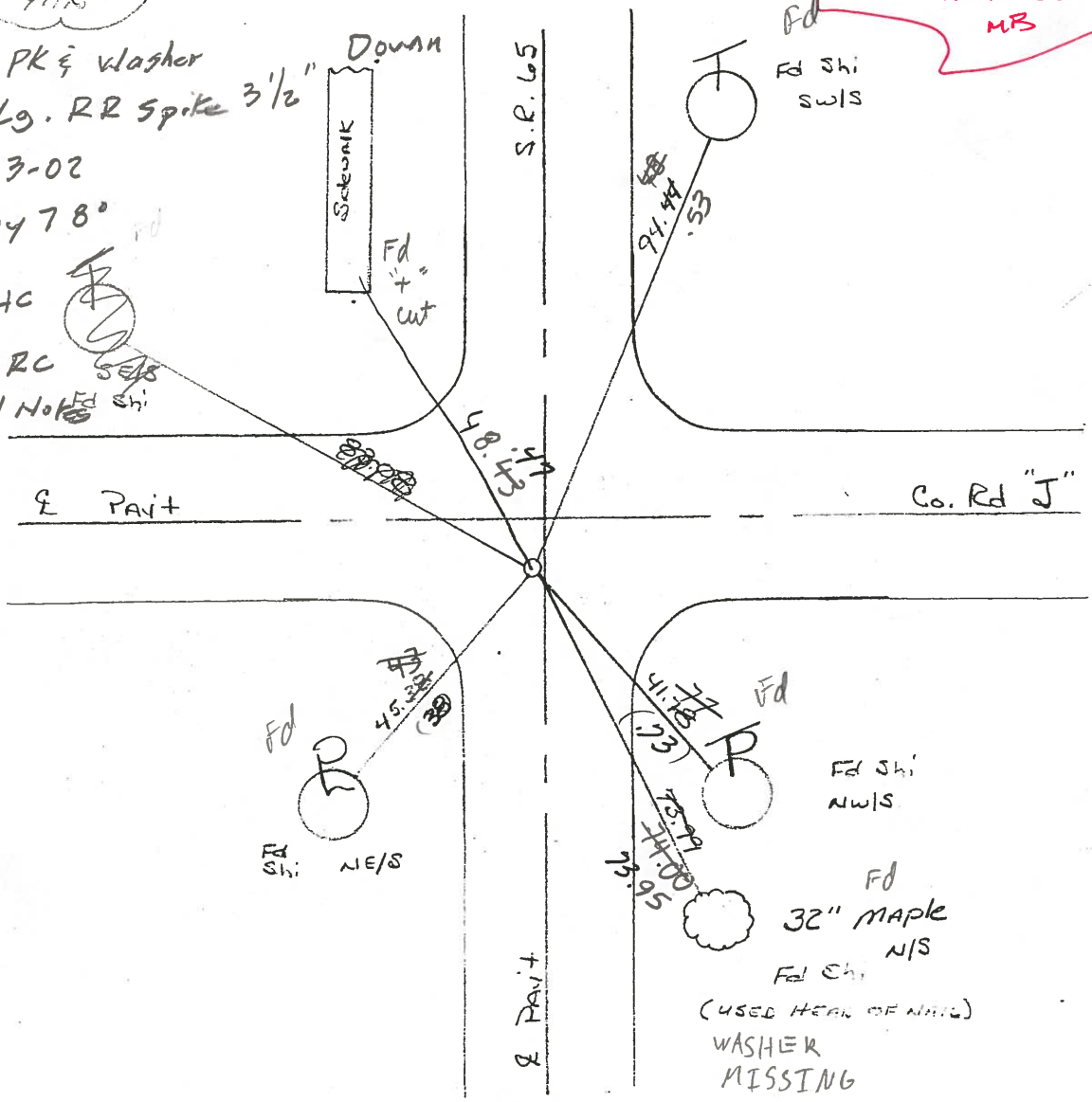
476+55

Reset Magnet/Washer  
11-21-02  
MBS

Fd PK & Washer  
Fd Lg. RR Spike 3 1/2"  
9-13-02  
Sunny 78°



Homan HC  
Beaumont RC  
Barnhisel Notes



Fd Shi  
NWIS  
Fd  
32" MAPLE  
NIS  
Fd Shi  
(USED HEAD OF NAIL)  
WASHER  
MISSING

ODOT DISTRICT 2 SURVEY OFFICE

SHEET \_\_\_\_\_ OF \_\_\_\_\_

County HENRY S.R. 65

Date 1-27-84

Township RICHFIELD

Weather Cloudy

Section 21

Temp. 30°

T4N, R8E

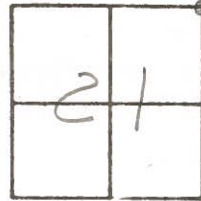
Personnel HOFFMAN

LOHRKE H.C.

HOUSEHOLDER R.C.

BARNHISEL

#19



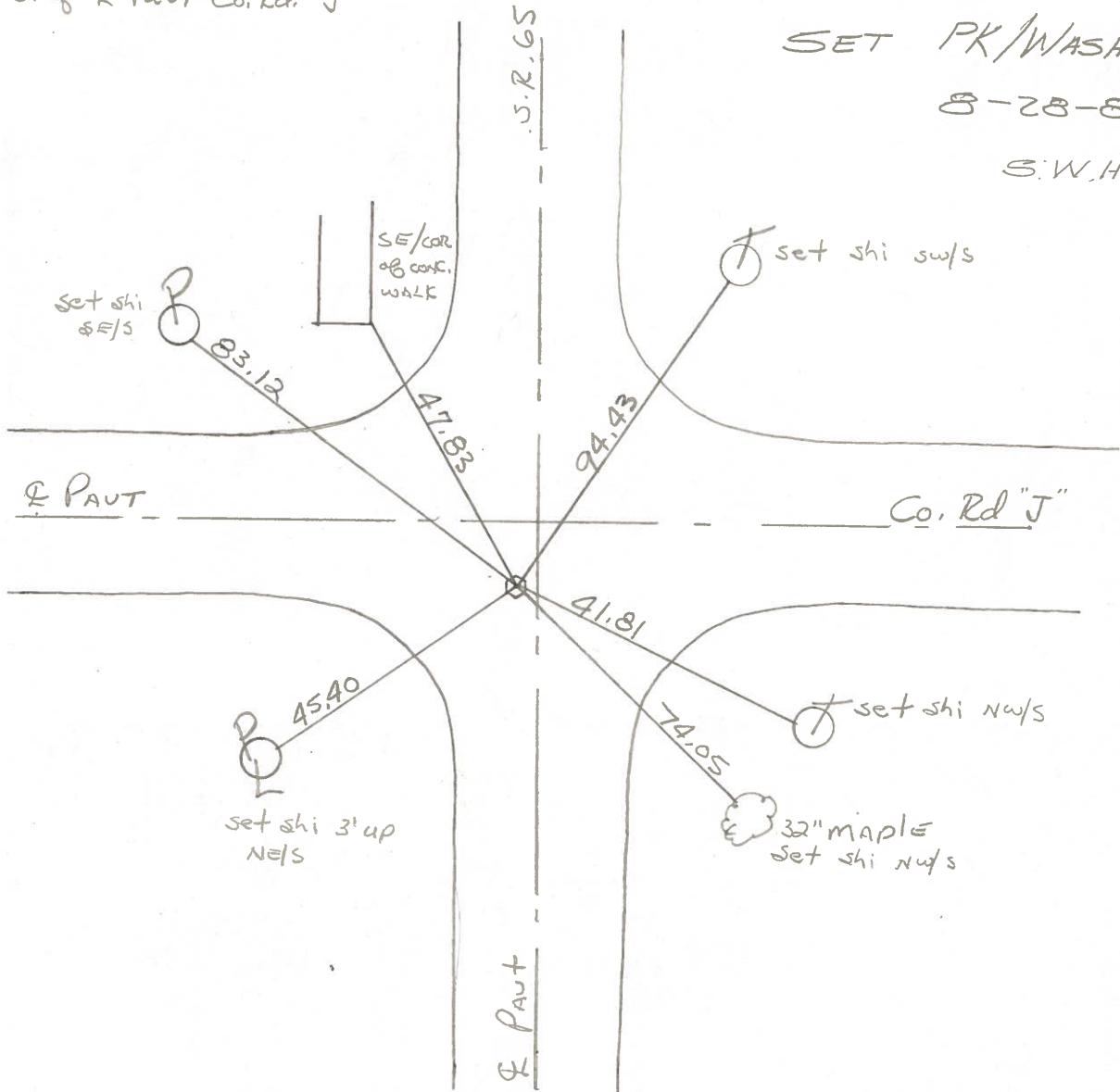
Fd. CTR. PUNCHED R.P. SPK set BY COUNTY  
0.5' Lt of E PAUT SR 65  
7.8' S. of E PAUT Co. Rd. "J"

S.L.M. 476+65

SET PK/WASHER

8-28-84

S.W.H.



ODOT. DISTRICT 2 SURVEY OFFICE

SHEET \_\_\_\_\_ OF \_\_\_\_\_

County HENRY S.R. 65

Date 1-27-84

Township RICHFIELD

Weather cloudy

Section 21

Temp. 30°

T4N, R8E

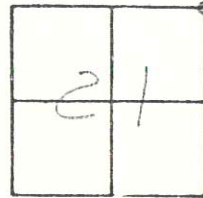
Personnel HOFFMAN

LOHRKE H.C.

HOUSEHOLDER R.C.

BARNHISEL

#19

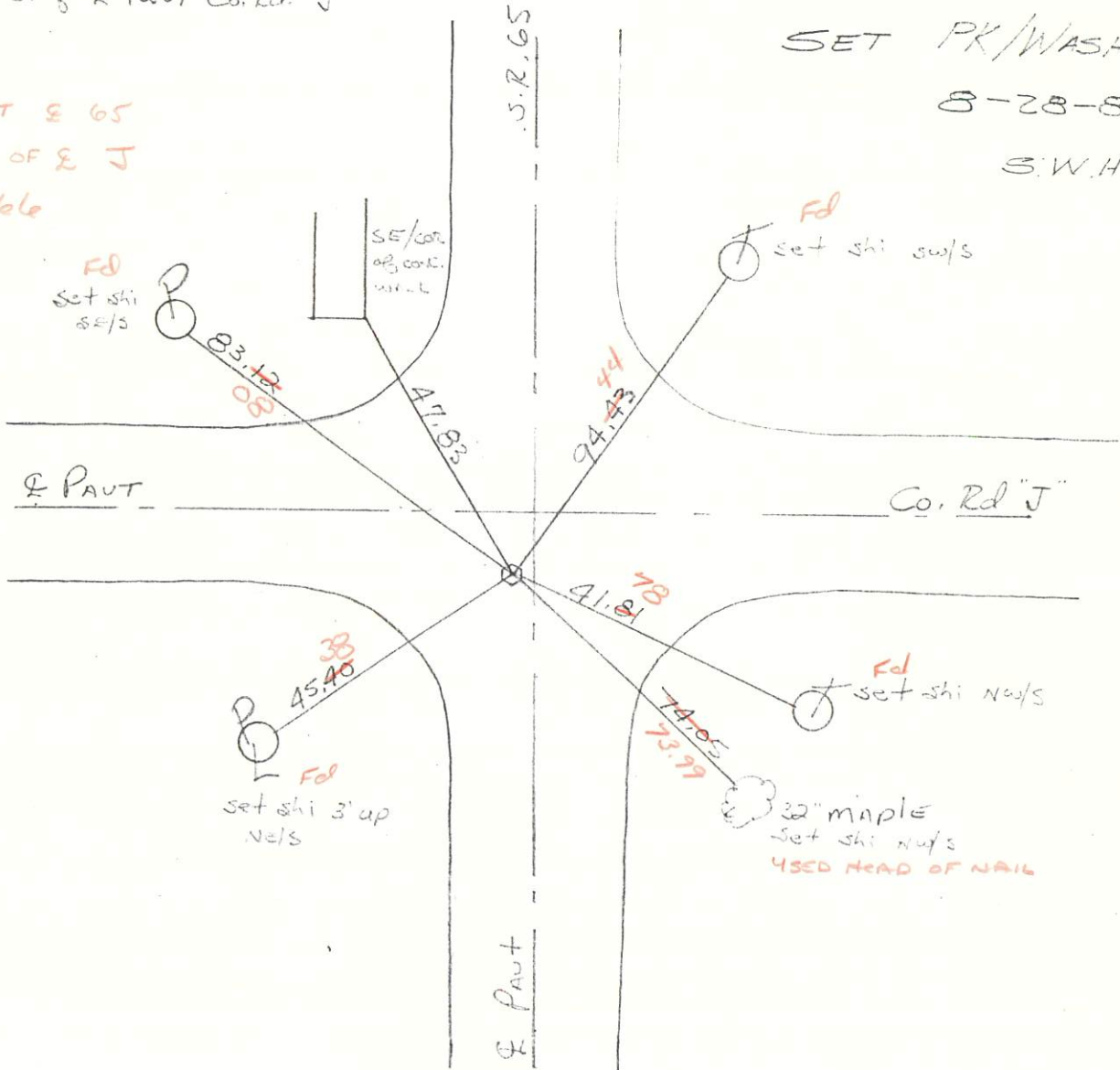


Fd. ctr. punched R.P. spk set by County  
 0.5' Lt of E PAUT SR 65  
 7.8' S. of E PAUT Co. Rd. "J"

S.L.M. 476 + 65  
 $\frac{8}{75}$

SET PK/WASHER  
 8-28-84  
 S.W.H.

0.5 LT E 65  
 7.0 S. OF E J  
 476 + 66



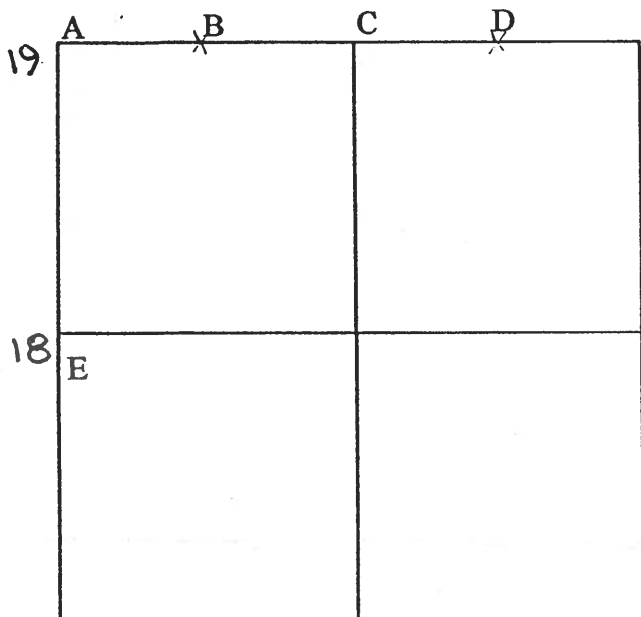
Fd  
 set shi  
 SE/S

Fd  
 set shi  
 sw/s

Fd  
 set shi  
 3' up  
 N/S

Fd  
 set shi  
 N/S

32" maple  
 set shi  
 N/S  
 USED HEAD OF NAIL



COUNTY: HENRY

TOWNSHIP: RICHFIELD

T- 4 -N R- 8 - E

SECTION: 22

19 7/30/79 R.W., J.J., G.M.  
 A - Found recorded RR spike 0.63' east of high point of stone (4"x6"x24") 26" below road surface. Found wood stake on e/s stone. Placed center punched RR spike on surface over high point of stone. Pk's 6' north and west. Stone is 8.2' east of west edge 18' pavement.

47.91' N.W. to SE corner conc. walk.  
 38.99' S.E. to shiner nw/s telephone pole.  
 74.03' S.S.E. to shiner nw/s 32" maple.  
 45.13' S.S.W. to shiner ne/s power pole.

7/25/88 R.W., S.K.  
 83.06' W.N.W. to nail/shiner se/s telephone pole.  
 41.78' S.E. to nail/shiner ne/s power pole. NEW  
 74.01' S.S.E. to duplex n/s maple.  
 45.38' S.W. to nail/shiner ne/s power pole.

9/24/79 R.W., J.J., C.S.  
 B - Found iron pin 0.10' south of top center of stone (4"x5"x22") 16" below road surface. Removed iron pin. Placed center punched RR spike over top center of stone. Pk's 6' north and west. Stone is 1.8' north of south edge 18' pavement.

23.28' N. to "+" SW corner catch basin. (P)  
 27.22' N.N.E. to duplex nw/s telephone pole.  
 101.65' E.N.E. to duplex s/s 24" maple.

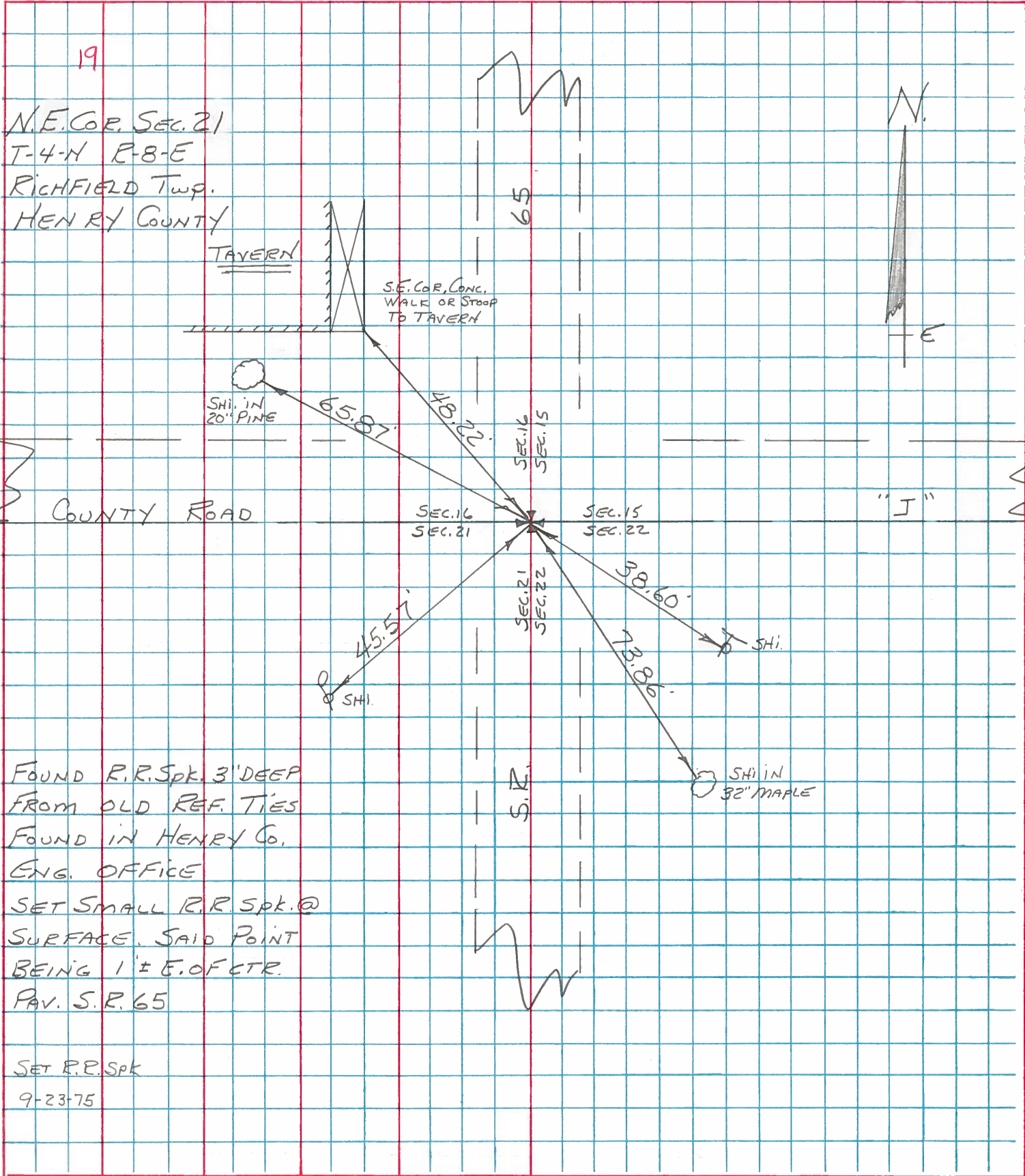
7/25/88 R.W., S.K.  
 20.80' N.W. to 5/8" iron pin at north edge pavement.  
 23.30' N. to "+" SW corner catch basin. (P)  
 27.27' N.N.E. to duplex nw/s telephone pole.  
 22.66' N.E. to 5/8" iron pin at north edge pavement.



PERSONNEL	TITLE	PERSONNEL	TITLE
BURNSIDE			
SMITH			
BOWERS			
MEAD			

COUNTY HENRY DATE 11-26-74  
 S. R. 65 WEATHER CLEAR  
 (RICHFIELD TWP)  
 SEC. NE. COR. SEC. 21 TEMP. +30°

DESCRIPTION REF. TO SEC. COR. (WESTHOPE) JOB NO. \_\_\_\_\_  
 LEFT CENTER LINE RIGHT



FOUND R.R. SPK. 3' DEEP  
 FROM OLD REF. TIES  
 FOUND IN HENRY Co.  
 ENG. OFFICE

SET SMALL R.R. SPK. @  
 SURFACE SAID POINT  
 BEING 1' ± E. OF CTR.  
 PAV. S. R. 65

SET R.R. SPK  
 9-23-75



PERSONNEL	TITLE	PERSONNEL	TITLE
BURNSIDE			
SMITH			
BOWERS			

COUNTY HENRY DATE 4-25-74

S. R. 65 WEATHER PT. CLOUDY

SEC. \_\_\_\_\_ TEMP. +44°

DESCRIPTION CONTROL TIES JOB NO. \_\_\_\_\_

