

O.D.O.T. DISTRICT 2 SURVEY OFFICE (USE ONLY)

PERSONNEL

REFERENCE NO. 16

SHEET 24 OF 25

NOTES RHOADES
 H.C. MILLER
 R.C. NIESE

DATE 4/3/24
 WEATHER CLOUDY
 TEMP. 42°

ROUTE SR 109
 COUNTY HENRY
 TOWNSHIP MONROE
 SECTION 34

DWG BY BARRIERE PID 99587

T 4 N R 7 E

TYPE MONUMENT LG R.R. SPIKE

~~ON SURFACE~~ - BELOW 1 1/2"

OFFSET \varnothing PAVEMENT _____ LT : RT

_____ TO _____ EDGE PAVEMENT

STATION: 370+58

HORIZ.DATUM: OHIO LDP (HENRY)

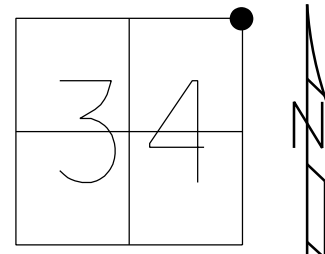
GEOID: 18

GRID: NORTHING: 587335.167

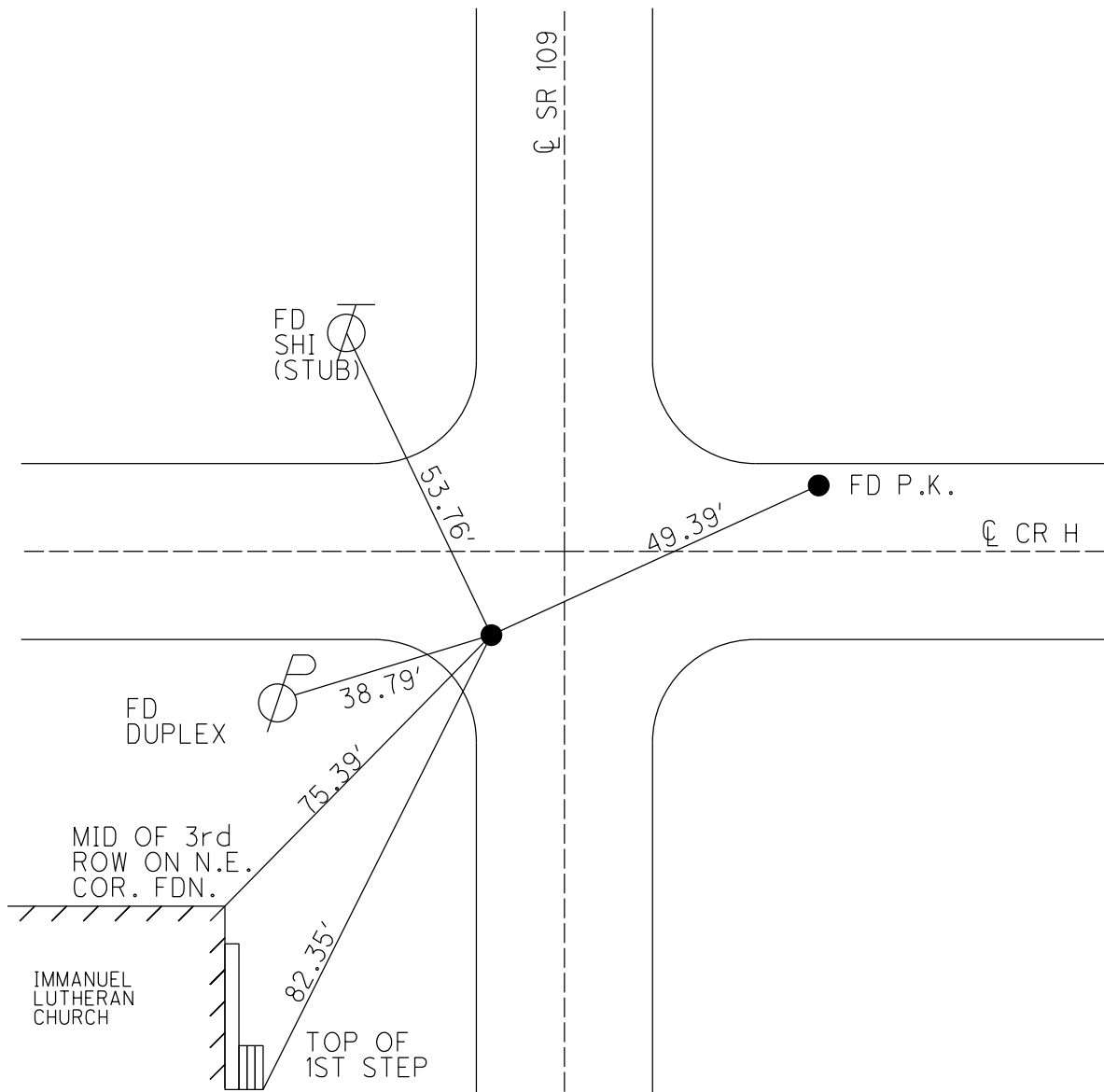
EASTING: 1546077.703

LDP: NORTHING: 438673.195

EASTING: 181523.55



RECORD:
 FD SM.R.R.SPIKE
 6/23/89, MDB
 5/18/98, MC
 SET P.K./WASHER
 9/28/98, MB
 FD SM.R.R.SPIKE
 1.5" DOWN
 2/25/19, JLL
 REF16
 6/9/20, JFO
 3/12/21, JMR
 12/2/21, DSA



O.D.O.T. DISTRICT 2 SURVEY OFFICE (USE ONLY)

PERSONNEL _____

REFERENCE NO. 16

SHEET 24 OF 25

NOTES NIESE

DATE 3/12/21

ROUTE SR 109

H.C. RHOADES

WEATHER SUNNY

COUNTY HENRY

R.C. _____

TEMP. 50°

TOWNSHIP MONROE

DWG BY NIESE PID PAVE TRAIN

SECTION 34

T 4 N R 7 E

TYPE MONUMENT LG.R.R.SPIKE

~~ON SURFACE~~ - BELOW 1 1/2"

OFFSET \odot PAVEMENT 4.1' LT : ~~RT~~

- TO - EDGE PAVEMENT

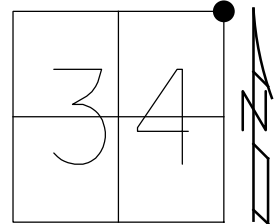
STATION: 370+58

HORZ.DATUM: NAD83(2011)

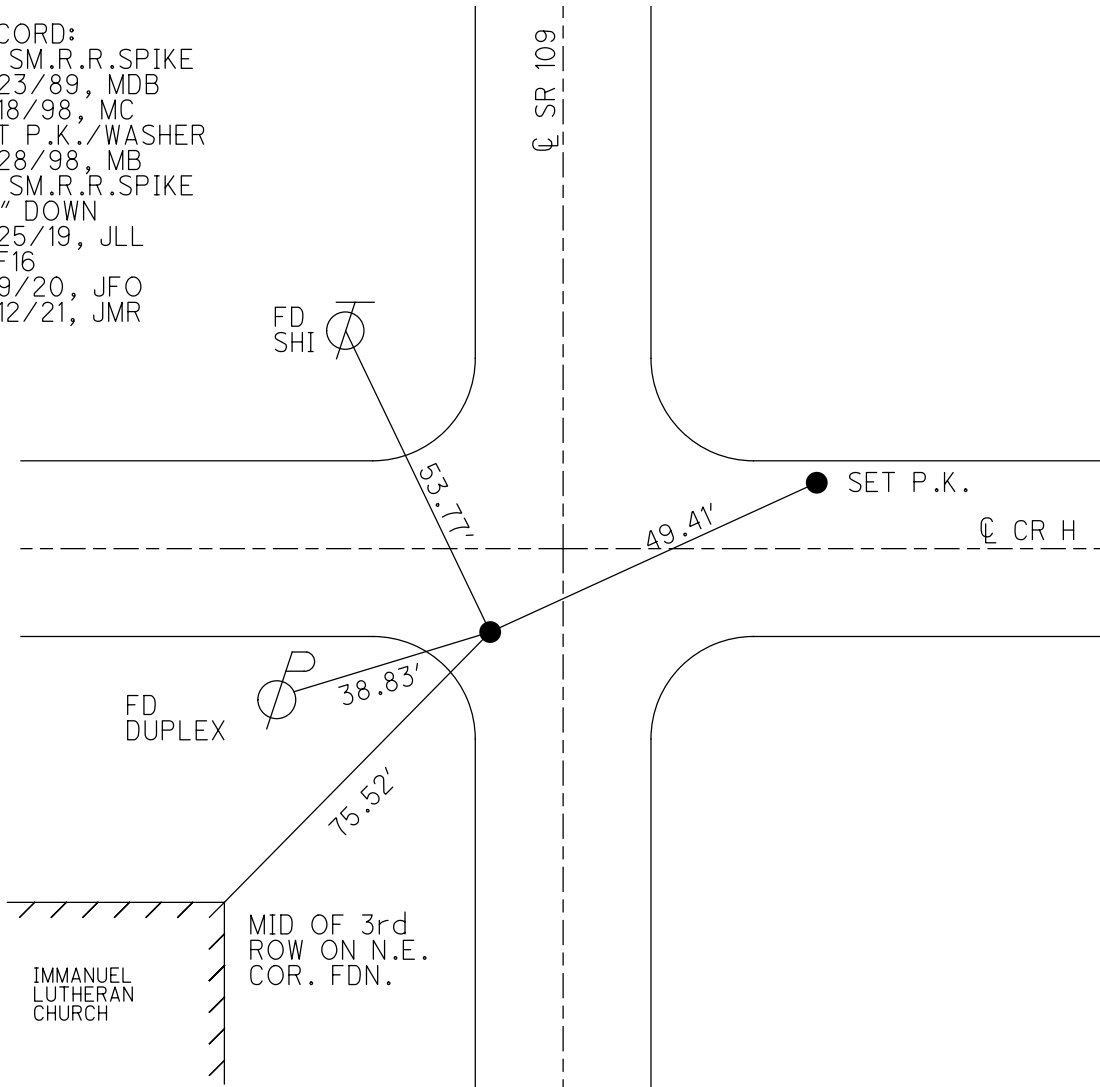
GEOID: NAVD88 2012A

GRID: NORTHING: 587335.167

EASTING: 1546077.703



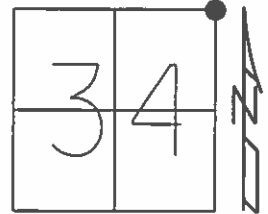
RECORD:
 FD SM.R.R.SPIKE
 6/23/89, MDB
 5/18/98, MC
 SET P.K./WASHER
 9/28/98, MB
 FD SM.R.R.SPIKE
 1.5" DOWN
 2/25/19, JLL
 REF16
 6/9/20, JFO
 3/12/21, JMR



O.D.O.T. DISTRICT 2 SURVEY OFFICE (USE ONLY)

PERSONNEL _____ REFERENCE NO. 16 SHEET 24 OF 26
 NOTES CANTERBURY DATE 05-18-1998 ROUTE SR 109
 H.C. ROUSOS WEATHER SUNNY COUNTY HENRY
 R.C. HUSS TEMP. 80°F TOWNSHIP MONROE
 _____ SECTION 34
 _____ T 4 N R 7 E

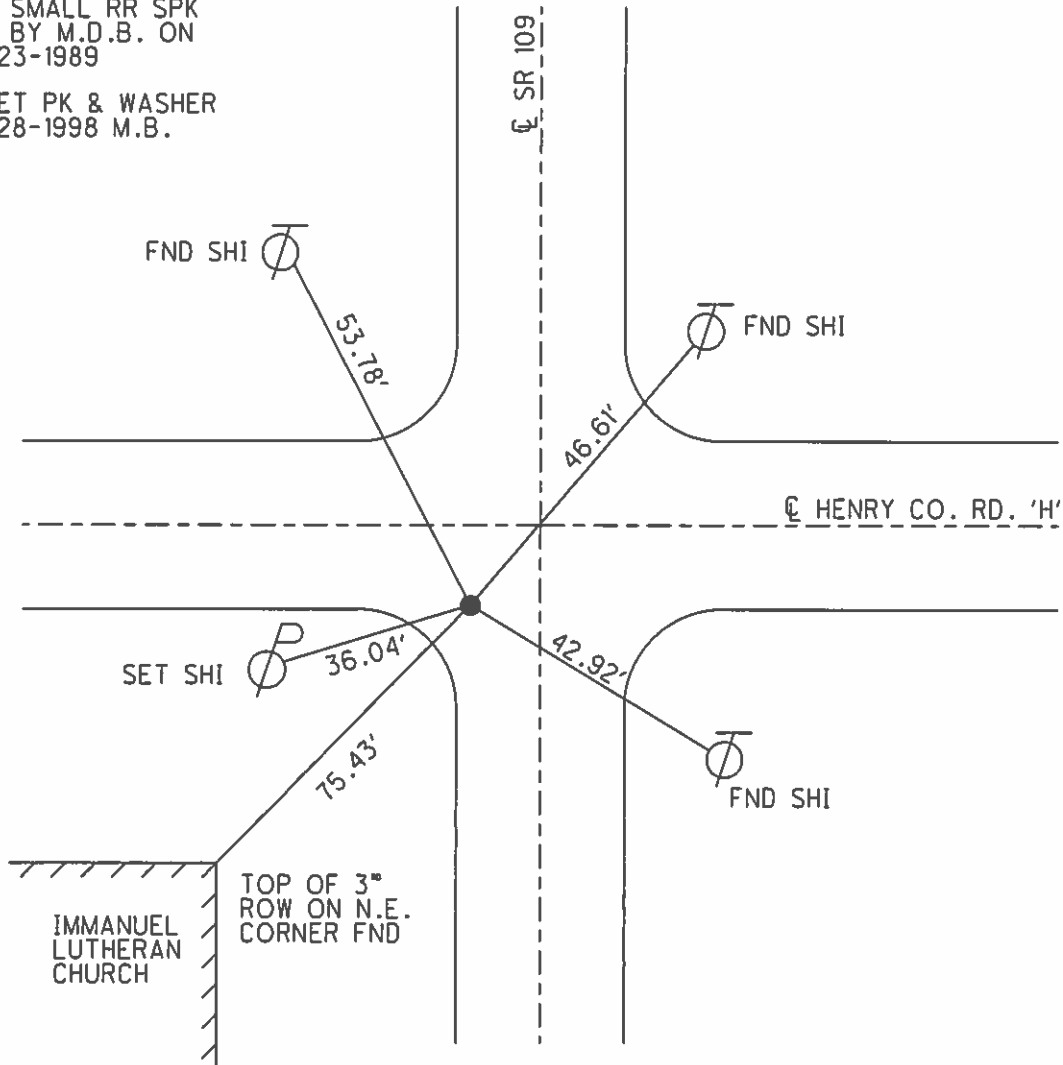
TYPE MONUMENT PK & WASHER
 ON SURFACE - ~~BELOW~~ ON
 LEFT - ☉ PAV'T - ~~RIGHT~~ 4.1'
 _____ TO _____ EDGE PAVEMENT
 S.L.M. 370+58



Grid: Northing: _____ Easting: _____

FND SMALL RR SPK
 SET BY M.D.B. ON
 06-23-1989

RESET PK & WASHER
 09-28-1998 M.B.



O.D.O.T. DISTRICT 2 SURVEY OFFICE

PERSONNEL _____

REFERENCE NO. 16

SHEET 19 OF 21

NOTES Canterbury

H.C. Russell

R.G. Huss

DATE 5-18-98

WEATHER Sunny

TEMP. +80°F

ROUTE 109

COUNTY Henry

TOWNSHIP Monroe

SECTION 34

T 4 N R 7 E

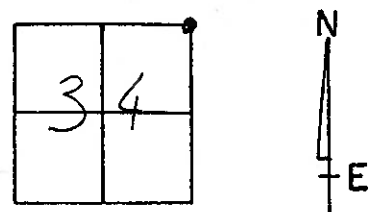
TYPE MONUMENT PK & Washer

ON SURFACE - ~~BELOW~~ ON SURFACE

LEFT- & PAV'T. - ~~RIGHT~~ 4.1

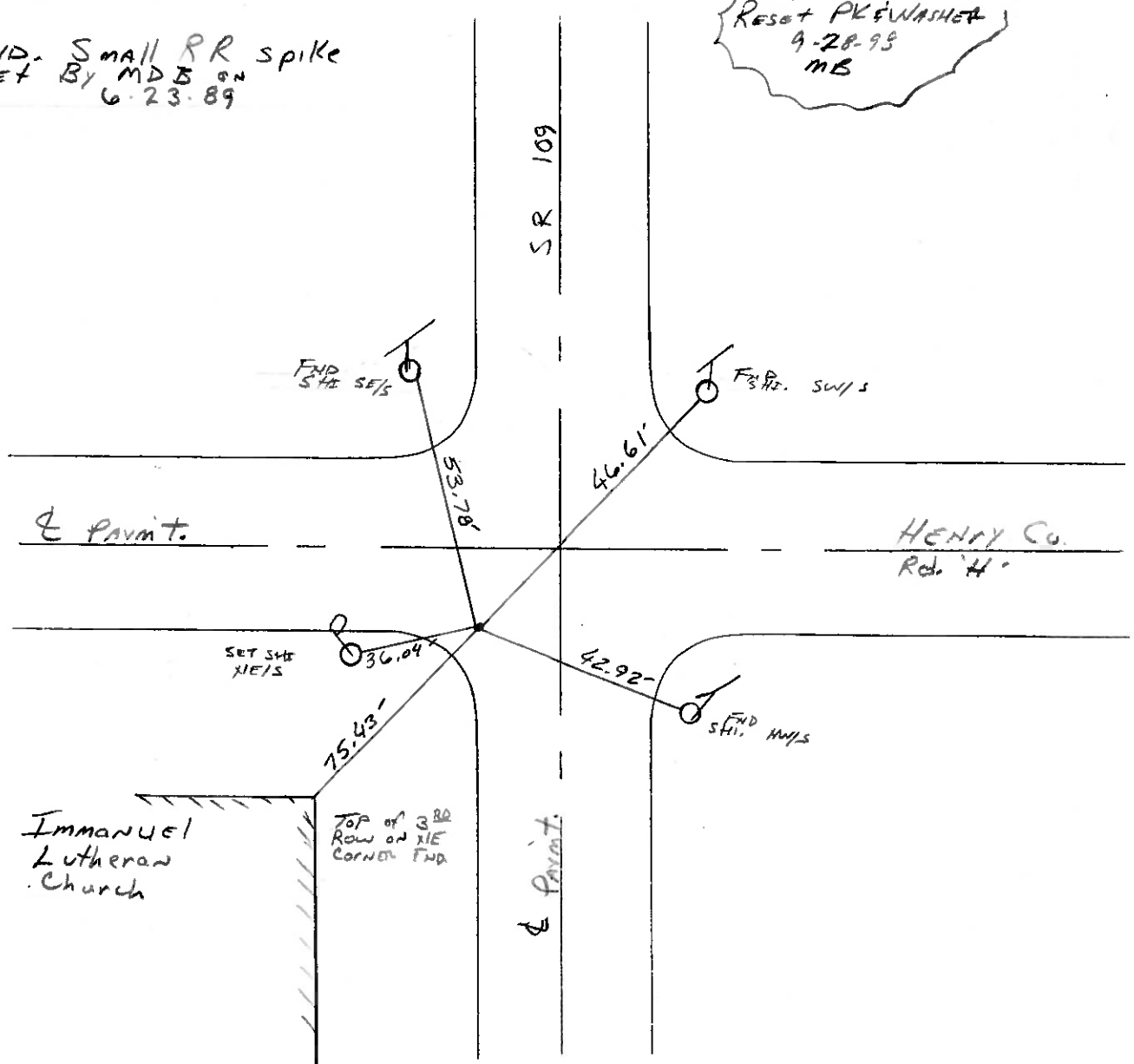
TO EDGE PAVEMENT ON S. edge of Pmnt. of

S.L.M. 11 + 278.97 dk Co. Rd H EAST
(Sta 370+58.00m)



FND. Small RR spike
SET BY MDS ON
6-23-89

Reset PK & WASHER
9-28-95
MB



DRAWN BY TR

O.D.O.T. DISTRICT 2 SURVEY OFFICE

PERSONNEL _____

REFERENCE NO. 16

SHEET 19 OF _____

NOTES BARNHISEL

H.C. " "

R.C. Loohoke

DATE 3-30-89

WEATHER RAIN

TEMP. +40°

ROUTE 109

COUNTY HENRY

TOWNSHIP MONROE

SECTION 34

T 4 N R 7 E

TYPE MONUMENT P.K. & WASHER

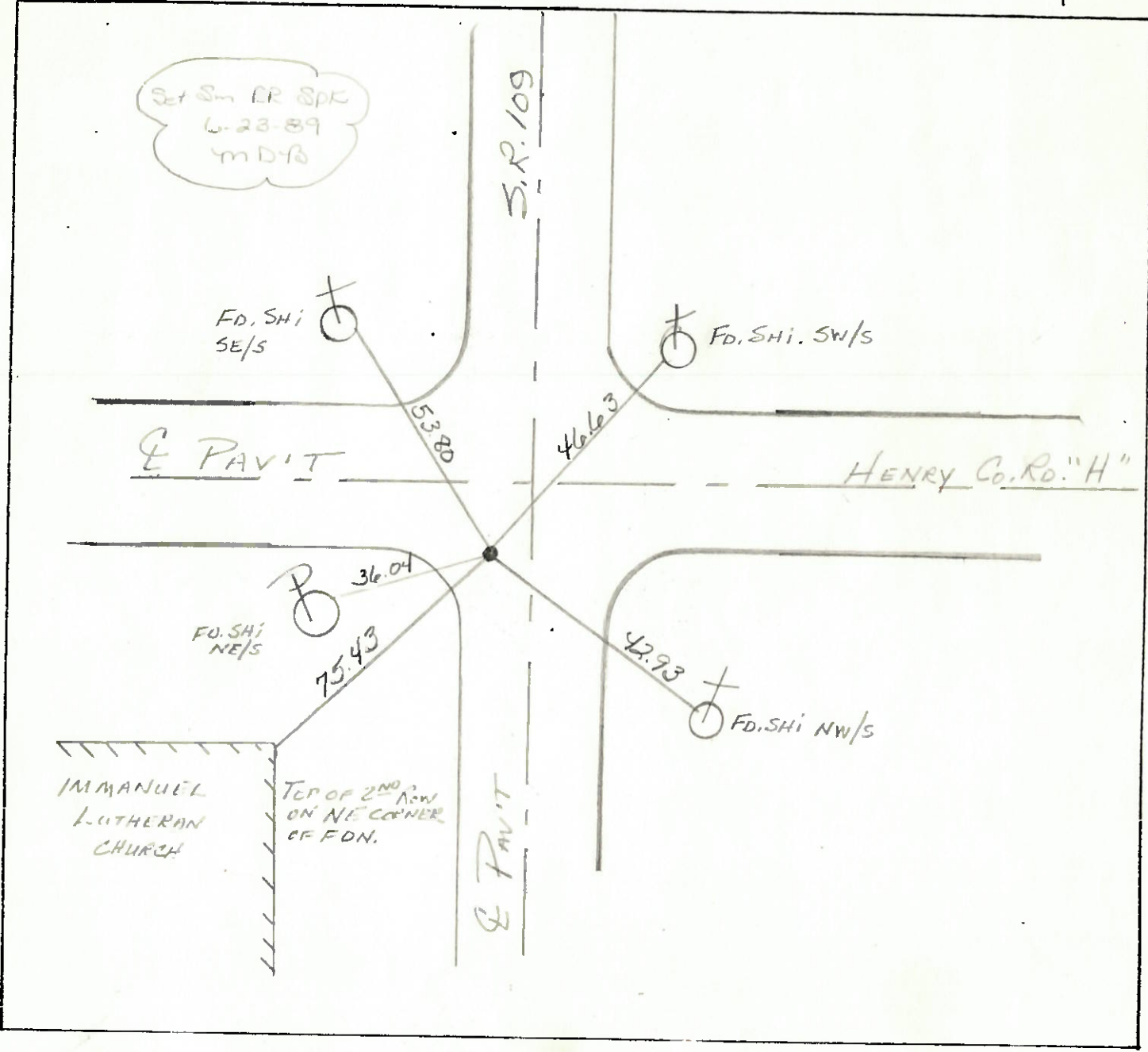
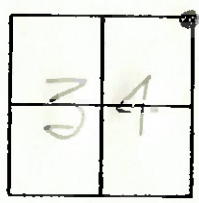
ON SURFACE - BELOW YES

LEFT- & PAV'T. - RIGHT 4.1

JO EDGE PAVEMENT ON S. EDGE OF PAV'T OF

S.L.M. 370+58

CO. RD. "H." EAST



ODOT. DISTRICT 2 SURVEY OFFICE

SHEET _____ OF _____

County HENRY S.R. 109

Township MONROE

Section 34

T&N, R7E

Personnel HOFFMAN

LOHRICE

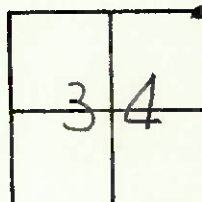
BARWISER

#16

Date April 26, 83

Weather CLEAR

Temp. +65°



Fd R.R. spc @ surface, SET BY COUNTY

4.0' Lt. & PAUT SR109

7.0' SOUTH & PAUT Co. Rd. "H" EAST

SK111 = 369 + 85

SET P.K./WASHER

9-19-83

SWH

