

O.D.O.T. DISTRICT 2 SURVEY OFFICE (USE ONLY)

PERSONNEL

REFERENCE NO. 20A

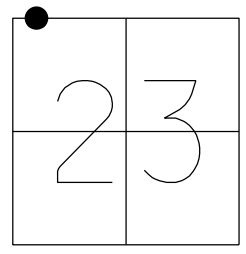
SHEET 21 OF 25

NOTES NIESE DATE 10/7/24
 H.C. MILLER WEATHER SUNNY
 R.C. PRESTON-COLVIN TEMP. 64°

ROUTE SR 109
 COUNTY HENRY
 TOWNSHIP MONROE
 SECTION 23
 T 4 N R 7 E

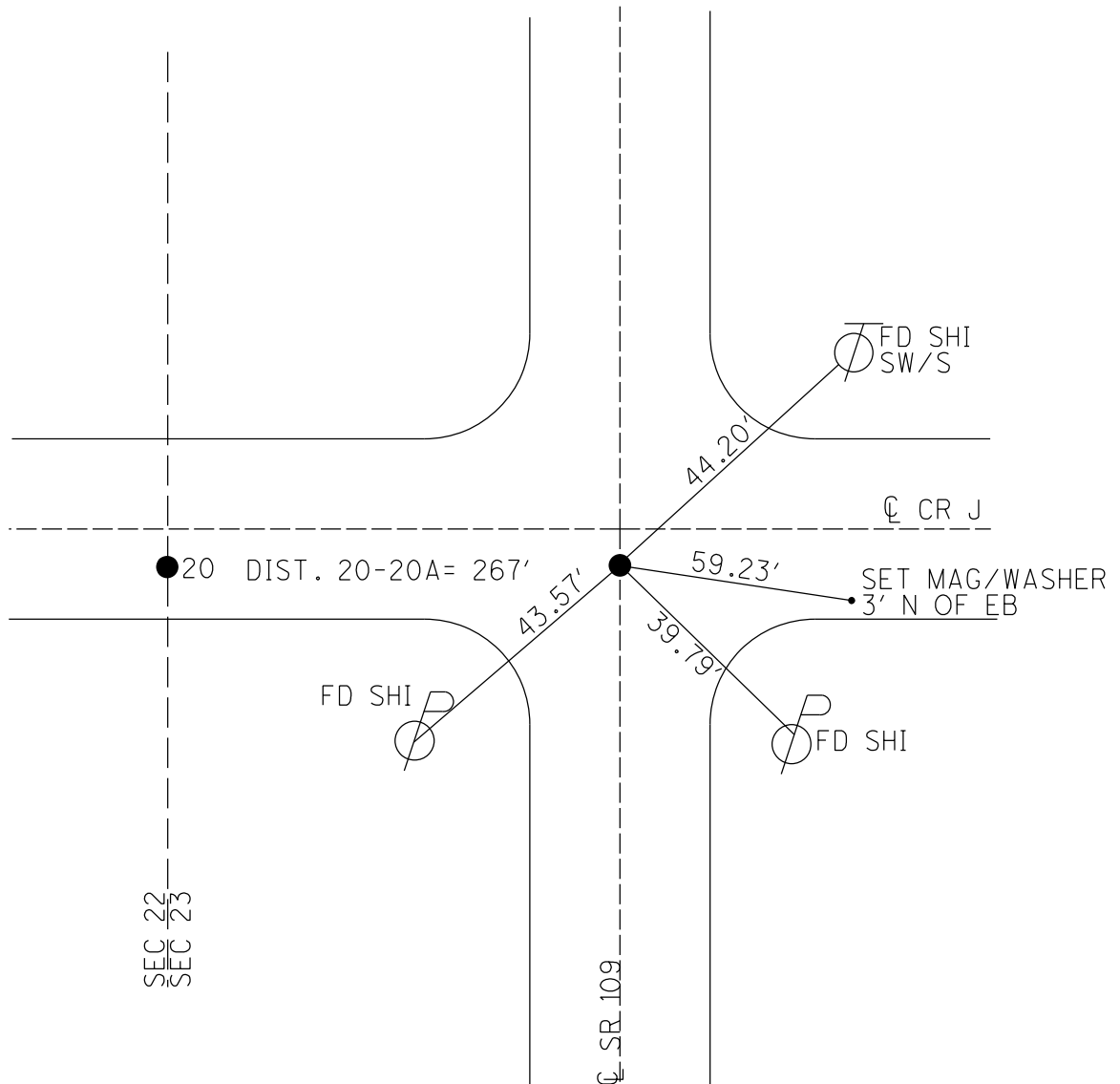
DWG BY BARRIERE PID 99587

TYPE MONUMENT MAG NAIL/WASHER
 ON SURFACE - BELOW ON
 OFFSET \varnothing PAVEMENT LT : RT
 TO EDGE PAVEMENT
 STATION: 450+07



HORIZ. DATUM: OHIO LDP (HENRY) GEOID: 18
 GRID: NORTHING: 597935.5101 EASTING: 1546408.0676
 LDP: NORTHING: 454582.696 EASTING: 181566.552

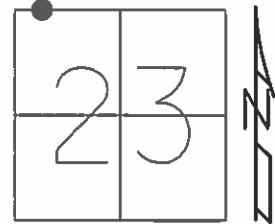
RECORD:
 ORIGIN UNKOWN
 SET MAG/WASHER
 10-28-04, MC
 FD MAG NAIL
 GPS, REFA20
 9-2-15, JFO
 UNCOVERED
 8-3-16, JMR
 FD MAG NAIL
 REFA20
 2-25-19, JLL
 SET MAG/WASHER
 10/7/24, TDN



O.D.O.T. DISTRICT 2 SURVEY OFFICE (USE ONLY)

PERSONNEL _____ REFERENCE NO. 20 A SHEET 4 OF 38
 NOTES RHOADES DATE 9-2-14 ROUTE SR 109
 H.C. O'DONNELL WEATHER SUNNY COUNTY HENRY
 R.C. RHOADES TEMP. 72°F TOWNSHIP MONROE
 _____ SECTION 23
 _____ T 4 N R 7 E

TYPE MONUMENT PK NAIL
 ON SURFACE - ~~BELOW~~ ON
 LEFT - ☉ PAV'T - RIGHT ON
9.8' TO RT EDGE PAVEMENT
 S.L.M. 477+03



Grid: Northing: 597935.5101 Easting: 1546408.0676

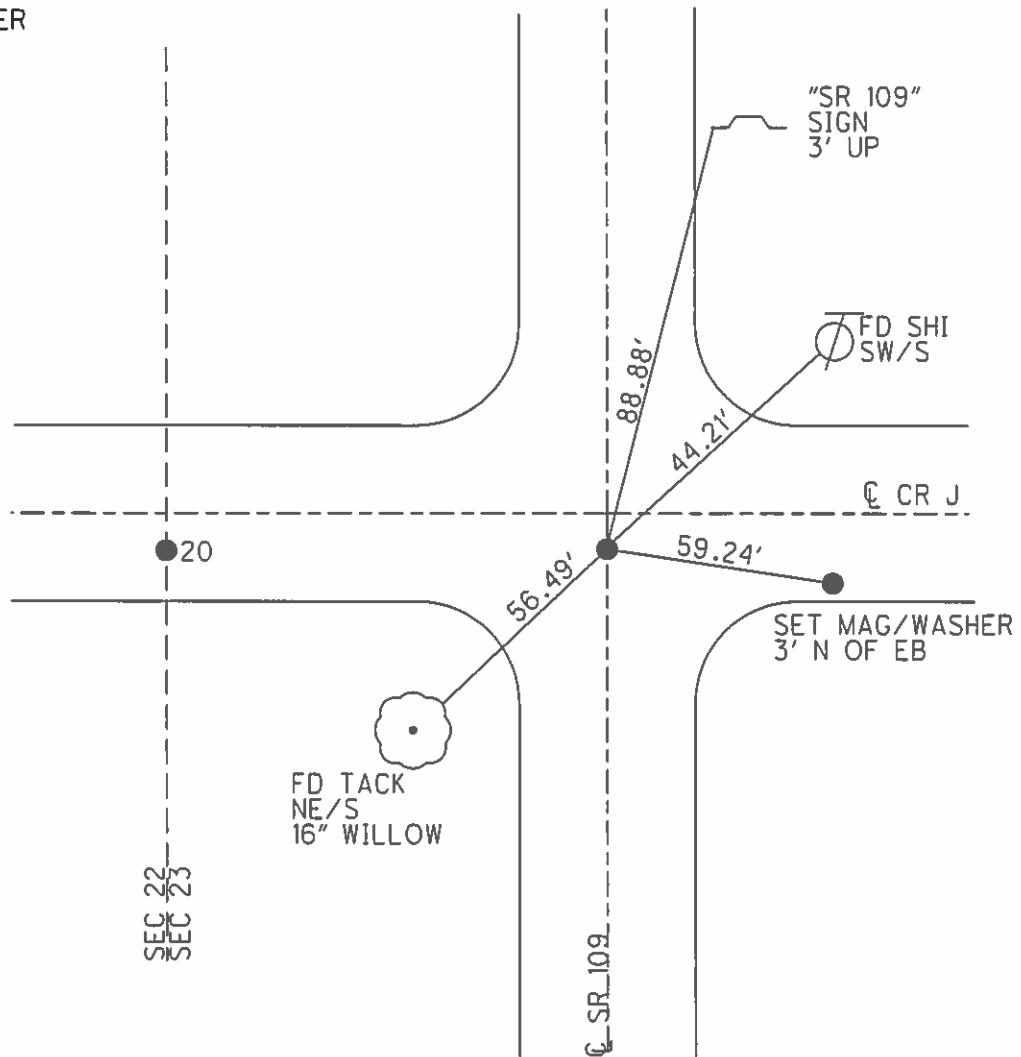
RECORD:
 ORGIN UNKOWN

DIST. 20-20A= 267'

SET MAG/WASHER
 10-28-04, MC

FD MAG NAIL
 GPS, REFA20
 9-2-15, JFO

UNCOVERED
 8-3-16, JMR



O.D.O.T. DISTRICT 2 SURVEY OFFICE

PERSONNEL

REFERENCE NO. 20-A

SHEET 3 OF 23

NOTES CANTERBURY

H.C. BARNHISEL

R.C. HOOVER

DATE 8/30/04

WEATHER SUN

TEMP. +70°

ROUTE S.R. 109

COUNTY HENRY

TOWNSHIP MONROE

SECTION 23

T 4 N R 7 E

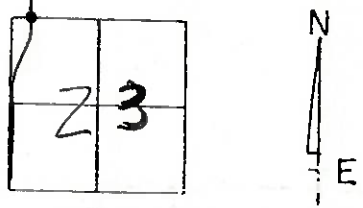
TYPE MONUMENT P.K. NAIL

ON SURFACE - ~~BELOW~~ SURFACE

~~LEFT - & PAV'T. - RIGHT~~ ON &

9.8' TO RT. EDGE PAVEMENT 10.0' S. OF & E.

S.L.M. 477+03



ORIGINAL UNKNOWN

RESET MAG/WASHER
10/28/04
M.C.

S.R. # 109

CUT NOTCH 3' UP
S.R. 109 SIGN

SET SHI.
SW/S.

& PAVT.

Co. RD. "J"

SET MAG 30' E.
OF STOP SIGN

60.41'

87.53'

44.21'

57.06'

SET TACK
NE/S 6" WILLOW

& PAVT.