

O.D.O.T. DISTRICT 2 SURVEY OFFICE (USE ONLY)

PERSONNEL

REFERENCE NO. 15 A

SHEET 5 OF 34

NOTES PRESTON-COLVIN

DATE 11/26/24

ROUTE SR 281

H.C. NEISE

WEATHER WINDY

COUNTY HENRY

R.C. PRESTON-COLVIN

TEMP. 40°

TOWNSHIP MONROE

SECTION 20

DWG BY PRESTON-COLVIN PID PAVING TRAIN

T 4 N R 7 E

TYPE MONUMENT PK/WASHER

ON SURFACE - ~~BELOW~~ ON

OFFSET \odot PAVEMENT 4.6' ~~LF~~ : RT

5.8' TO RT EDGE PAVEMENT

STATION: 377+38

HORIZ.DATUM: NAD83 2011

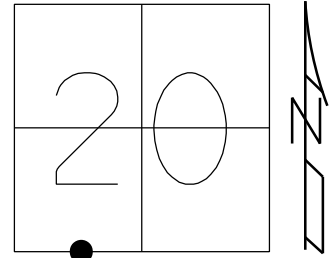
GEOID: 18

GRID: NORTHING: 592818.577

EASTING: 1531532.834

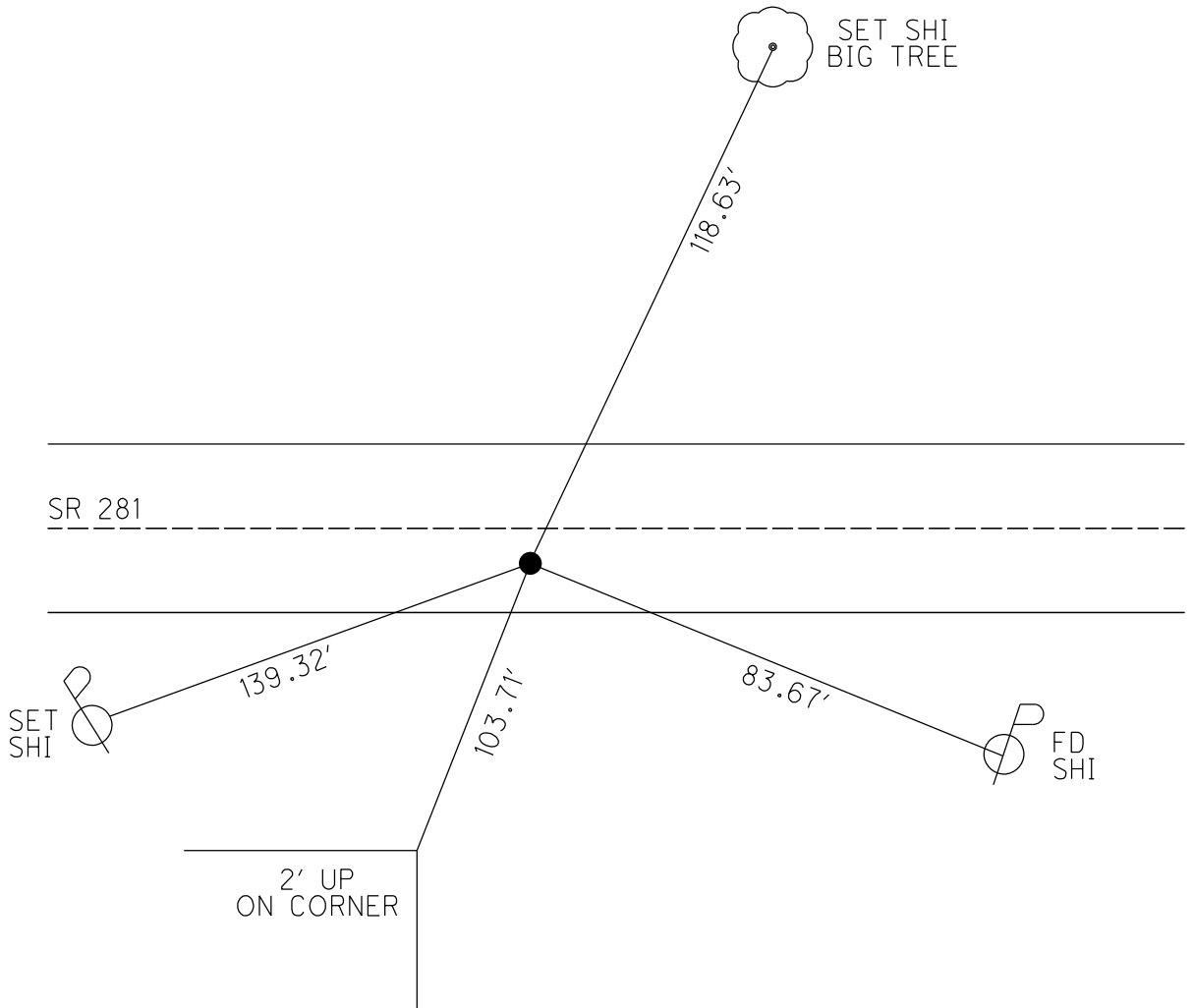
LDP: NORTHING: 449193.3

EASTING: 166786.7



RECORD:

- STA 377+69.10
- 1/4-1/4 PT SEC 20
- FD SM.R.R.SPIKE
- 8/18/98, MB
- SET P.K./WASHER
- 9/28/98, MB
- FD P.K./WASHER
- REFA15
- 9/4/18, JFO
- 7/25/19, JFO
- FD PK/WASHER
- REF15A
- 7/22/24, TDN
- FD PK/WASHER
- 11/26/24, TDN

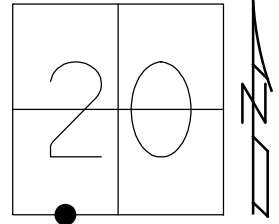


O.D.O.T. DISTRICT 2 SURVEY OFFICE (USE ONLY)

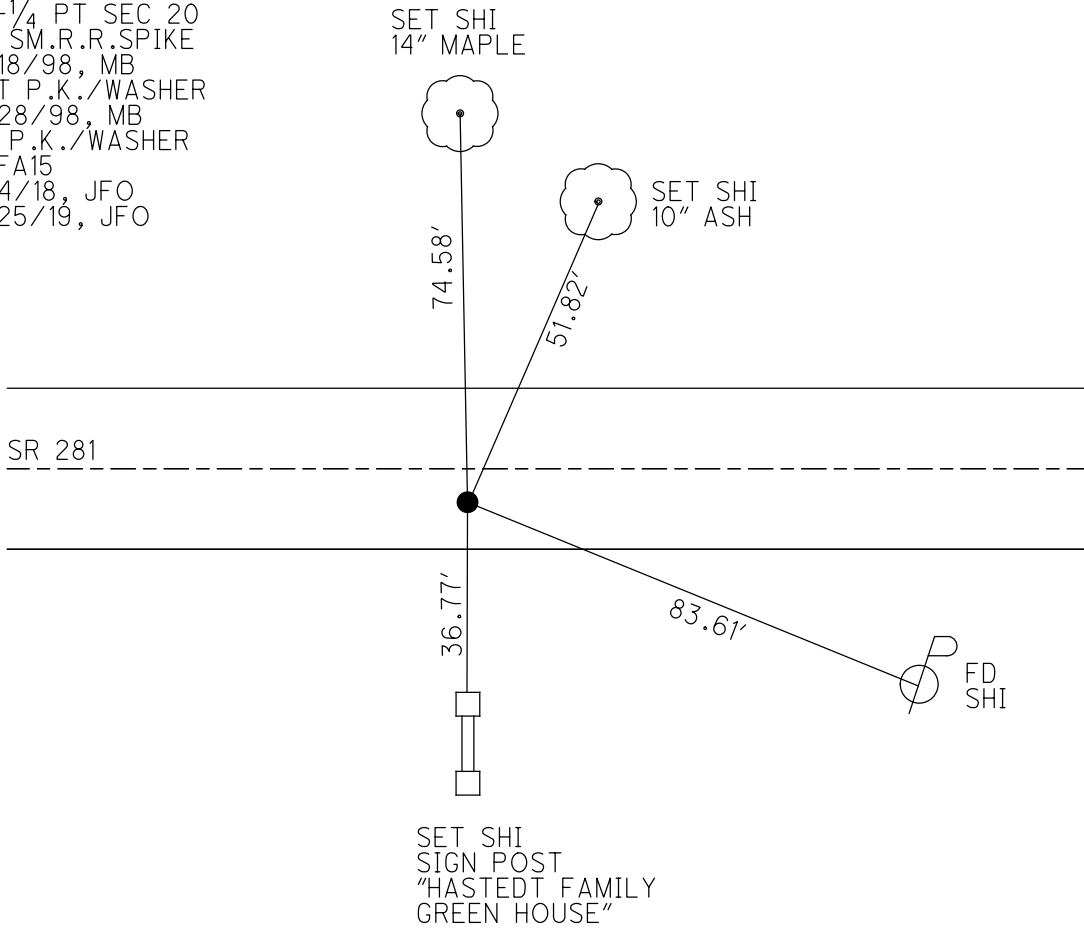
PERSONNEL _____ REFERENCE NO. 15 A SHEET 5 OF 34
 NOTES HUSS DATE 8/18/98 ROUTE SR 281
 H.C. BARNHISEL WEATHER FAIR COUNTY HENRY
 R.C. ROUSOS TEMP. 84° TOWNSHIP MONROE
 DWG BY NIESE PID CHIP_2 SECTION 20
 T 4 N R 7 E

TYPE MONUMENT SM.R.R.SPIKE
 ON SURFACE - ~~BELOW~~ ON
 OFFSET C PAVEMENT 4.6' ~~LT~~ : RT
5.8' TO RT EDGE PAVEMENT
 STATION: 377+38

HORZ.DATUM: NAD83(2011) GEOID: 2012A
 GRID: NORTHING: 592818.577 EASTING: 1531532.834



RECORD:
 STA 377+69.10
 1/4-1/4 PT SEC 20
 FD SM.R.R.SPIKE
 8/18/98, MB
 SET P.K./WASHER
 9/28/98, MB
 FD P.K./WASHER
 REFA15
 9/4/18, JFO
 7/25/19, JFO



O.D.O.T. DISTRICT 2 SURVEY OFFICE

PERSONNEL _____

REFERENCE NO. 15-A

SHEET 7 OF 34

NOTES Huss

H.C. Barnhart

DATE 8.18.98

ROUTE SR 281

R.C. Rousos

WEATHER Fair

COUNTY Henry

TEMP. + 89°F

TOWNSHIP Montrose

SECTION 20

T 4 N R 9 E

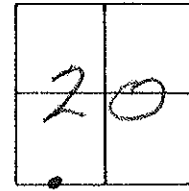
TYPE MONUMENT 5m. Rl spike

ON SURFACE - ~~BELOW~~ Surface

~~LEFT- & PAV'T.~~ - RIGHT 4.6'

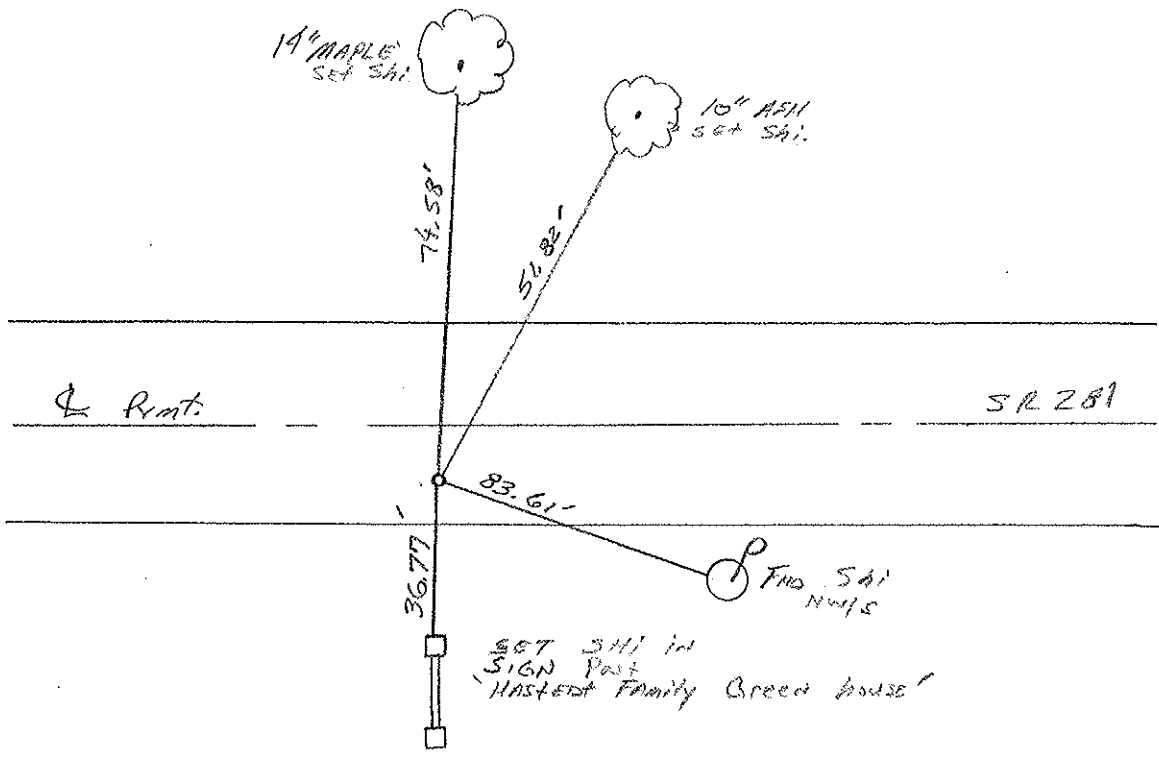
5.8 TO RT EDGE PAVEMENT

S.L.M. 11+509.4 (SLK), 377+38 (SLM)



Reset PK & WASHER
9-28-98
MRS

Records:
Sta 377+69.10
1/4-1/4 pt. sec. 20



O.D.O.T. DISTRICT 2 SURVEY OFFICE

PERSONNEL

REFERENCE NO. 15-A

SHEET 7 OF

NOTES SOCKMAN

H.C. BARANISEZ

R.C. LOERKE

DATE 8-12-87

WEATHER CLEAR

TEMP. +82

ROUTE SR 281

COUNTY HENRY

TOWNSHIP MONROE

SECTION 20

T4 N R 7 E

TYPE MONUMENT P.K. Nail

~~ON SURFACE~~ - BELOW 1 1/2"

~~LEFT - & PAV'T.~~ - RIGHT 4.6'

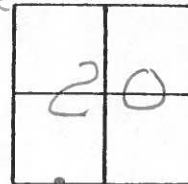
S.O. TO RT EDGE PAVEMENT

S.L.M. 377+38

Set small RR S&C

8-20-87

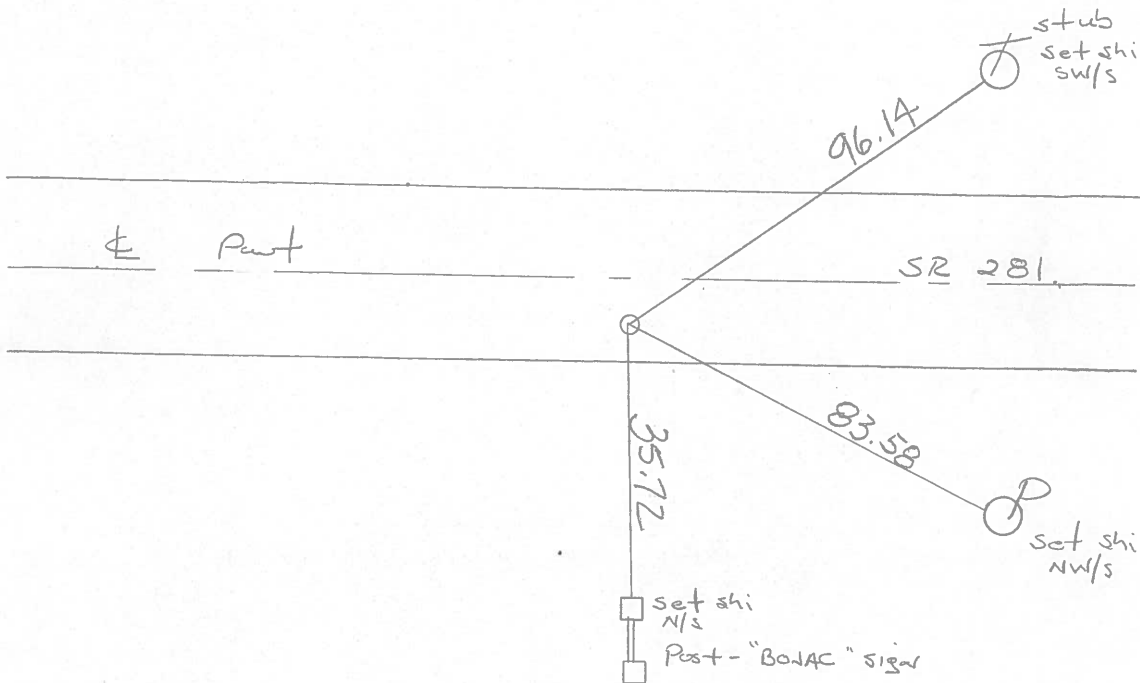
SOCK



RECORD:

Sta. 377+69.10

1/4 - 1/4 point Sec. 20



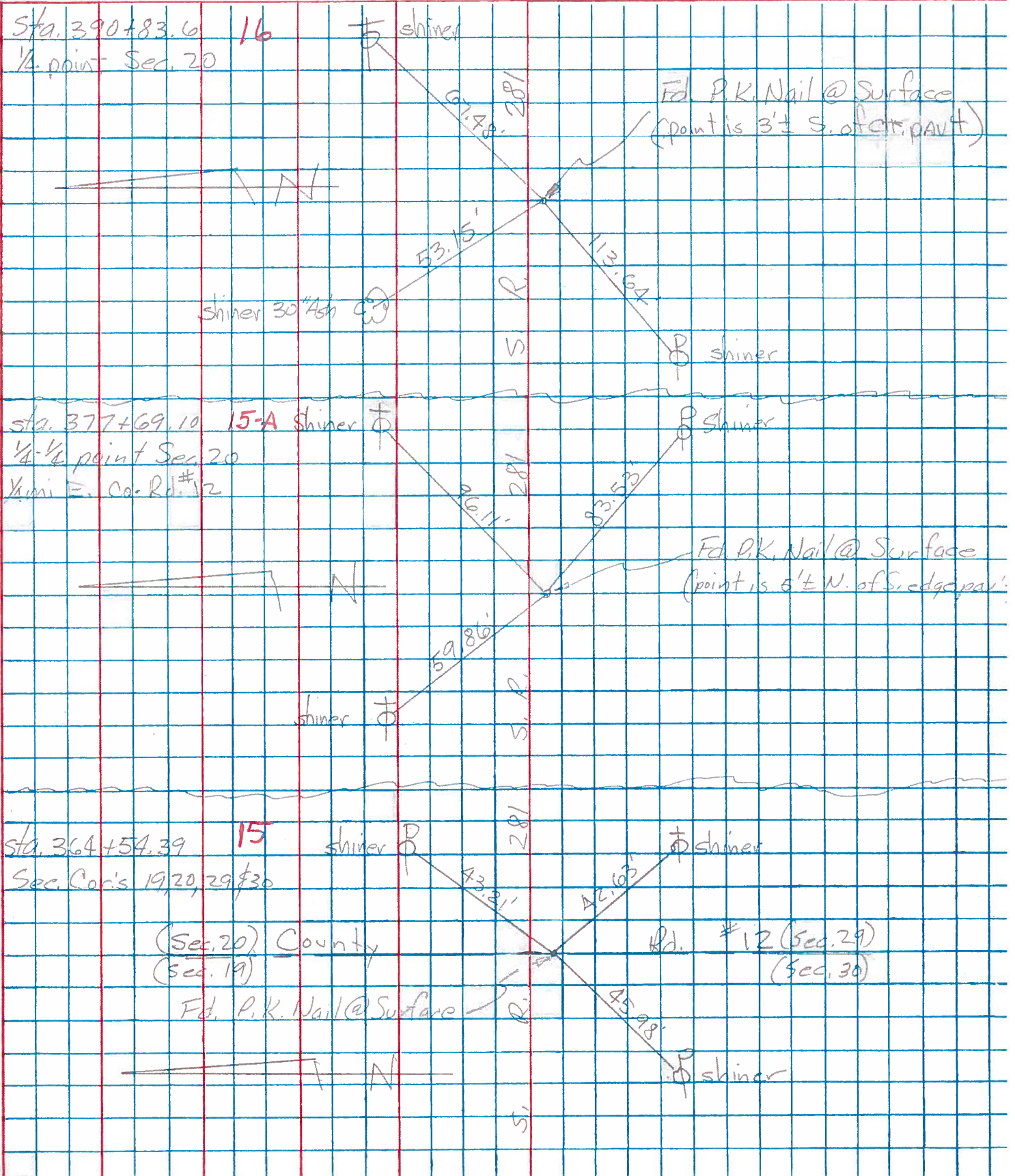
PERSONNEL	TITLE	PERSONNEL	TITLE
Tomsic			
Neuser			
Van yo			
Granata			

COUNTY HENRY DATE Nov. 18, 1974

S. R. 281 WEATHER _____

SEC. MONROE TWP. TEMP. _____

DESCRIPTION LEFT CENTER LINE RIGHT JOB NO.



PERSONNEL TITLE PERSONNEL TITLE

COUNTY Henry

DATE 11-29-57

S. R. #281

10-24-60

SEC. "J"

WEATHER

TEMP

JOB NO.

DESCRIPTION

LEFT

CENTER LINE

RIGHT

#14	Sec. Cor. Sec. #19 Stone (Iron Bolt) R.R. Spk. Monroe Twp (13)		28.0' S.E. To chiseled \otimes on Hdwr 74.59' S. To R.R. Spk. in E. side P.P. 57.19' N.W. To chiseled \otimes on Hdwr 39.52' Shi. in T. Pole N.
#15	Sec. Cor. Sec. #19 Stone (Iron Bolt) R.R. Spk. Flatrock Twp. (13)		33.80' S.E. To chiseled \otimes on Hdwr. 81.26' S. To R.R. Spk. in E. side. P. Pole 53.27' N.W. To chiseled \otimes on Hdwr 32.80' Shi. in T. Pole N
#16	1/4-1/4 Cor. R.R. Spk. Bords E.S.W. Cor. Sec. 19 (13-A)		99.93' N.E. To valve in T. Pole 67.05' N.W. To 60 \pm spk. T. Pole 47.0 $\frac{1}{2}$ ' S. To Shi. 8" Walnut
#17	1/4 Cor. Stone (Iron Bolt) (R.R. Spk) (14)		58.75' 58.50' S.E. To 60 \pm Spk. in W. Side 105.95' N.E. To Shi. in T. Pole 10" Apple 41.60' S. To 1" Gas Pipe 50.00' N. To 1" Gas Pipe 61.06' N.W. To 60 \pm Spk. in T. Pole
#18	1/4-1/4 Cor. Stone (R.R. Spk) Bords. W.S.E. Cor. (14-A)		76.95' 77.00' S.E. To N.E. Cor Conc. 73.80' Corp Crib. Foundation 73.95' S. To N.W. Cor. Conc. 47.45' Corp Crib. Foundation 47.53' N.W. To 60 \pm Spk. W. side T. Pole 86.81 S.W. To Shi. P. Pole
#19	S.E. Cor. Sec 19 R.R. Spk. (15)	80.42' 42.57 S.E. Shi. T.P. 46.02 S.W. Shi. P.P. 45.98	80.38' S.W. To 60 \pm spk. in N. Side 20" a 71.44' S.W. To " " " S.E. " 12" P/u. 40.47' N.E. To " " " S.E. " 10" Elm 39.97' Shi. in T.P. N.E. 42.24' clm 48.80' + N.W. Top 60" conc. Pipe
#20	1/4 1/4 Cor. Stone Did not find any Trace of iron bolt 4 1/2" l 1 cent P.P. (15-A)		96.50' N.E. To 60 \pm spk in Tel. Pole 73.50' N.W. To spk in 12" Pear 60.50' N.W. To 60 \pm spk. in Tel. Pole 82.22' S.E. Shi. in T. Pole