

O.D.O.T. DISTRICT 2 SURVEY OFFICE (USE ONLY)

PERSONNEL

REFERENCE NO. Y

SHEET OF

NOTES ASTON

DATE 5/28/24

ROUTE SR 295

H.C. NIESE

WEATHER CLEAR

COUNTY LUCAS

R.C. PRESTON-COLVIN

TEMP. 70°

TOWNSHIP PROVIDENCE

BLUBAUGH

SECTION 33

DWG BY BARRIERE

PID 83894

T 6 N R 9 E

TYPE MONUMENT MONBOX W/ 3/4" IPIN

ON SURFACE - BELOW ON

OFFSET \varnothing PAVEMENT LT : RT

 TO EDGE PAVEMENT

STATION: 130+06.70

HORIZ.DATUM: OH N/LUC OCCS

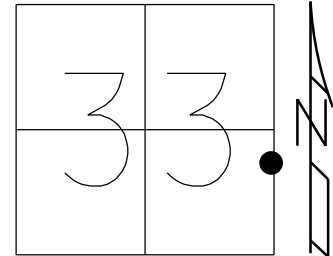
GEOID: 18

GRID: NORTHING: 647014.533

EASTING: 1605134.417

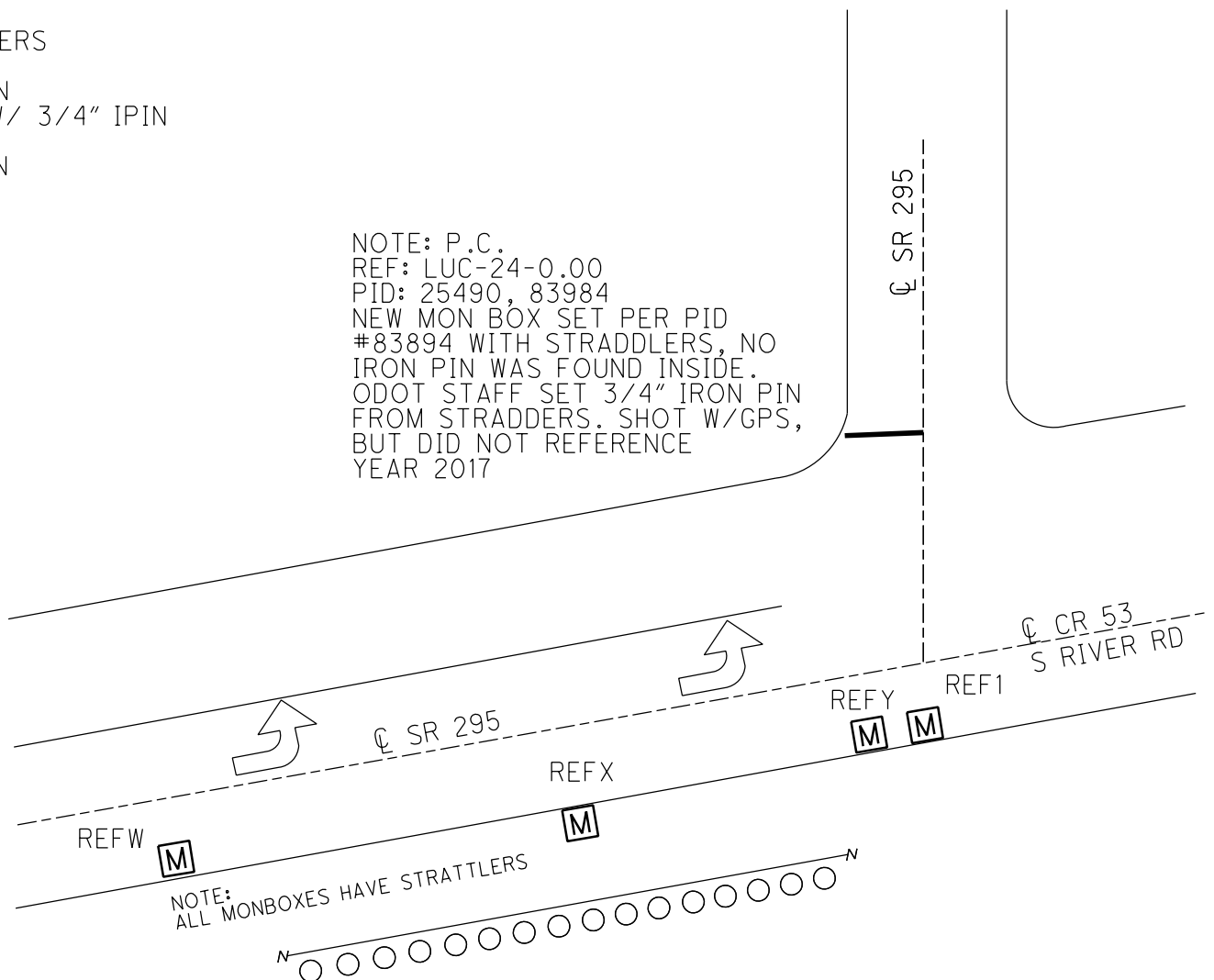
LDP: NORTHING: 268008.256

EASTING: 115988.4204



RECORD:
FD MONBOX
W/ 1" IPIN
REF19
8-8-17, JLL
FD MONBOX
W/ 3/4" IPIN
SET STRATTLERS
REFY
9/29/23, TDN
FD MONBOX W/ 3/4" IPIN
NEWREFY
5/28/24, TDN

NOTE: P.C.
REF: LUC-24-0.00
PID: 25490, 83984
NEW MON BOX SET PER PID
#83894 WITH STRADDLERS, NO
IRON PIN WAS FOUND INSIDE.
ODOT STAFF SET 3/4" IRON PIN
FROM STRADDERS. SHOT W/GPS,
BUT DID NOT REFERENCE
YEAR 2017



NOTE:
ALL MONBOXES HAVE STRATTLERS