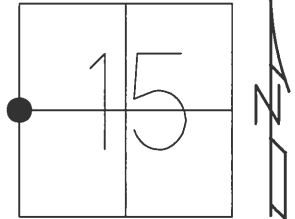


O.D.O.T. DISTRICT 2 SURVEY OFFICE (USE ONLY)

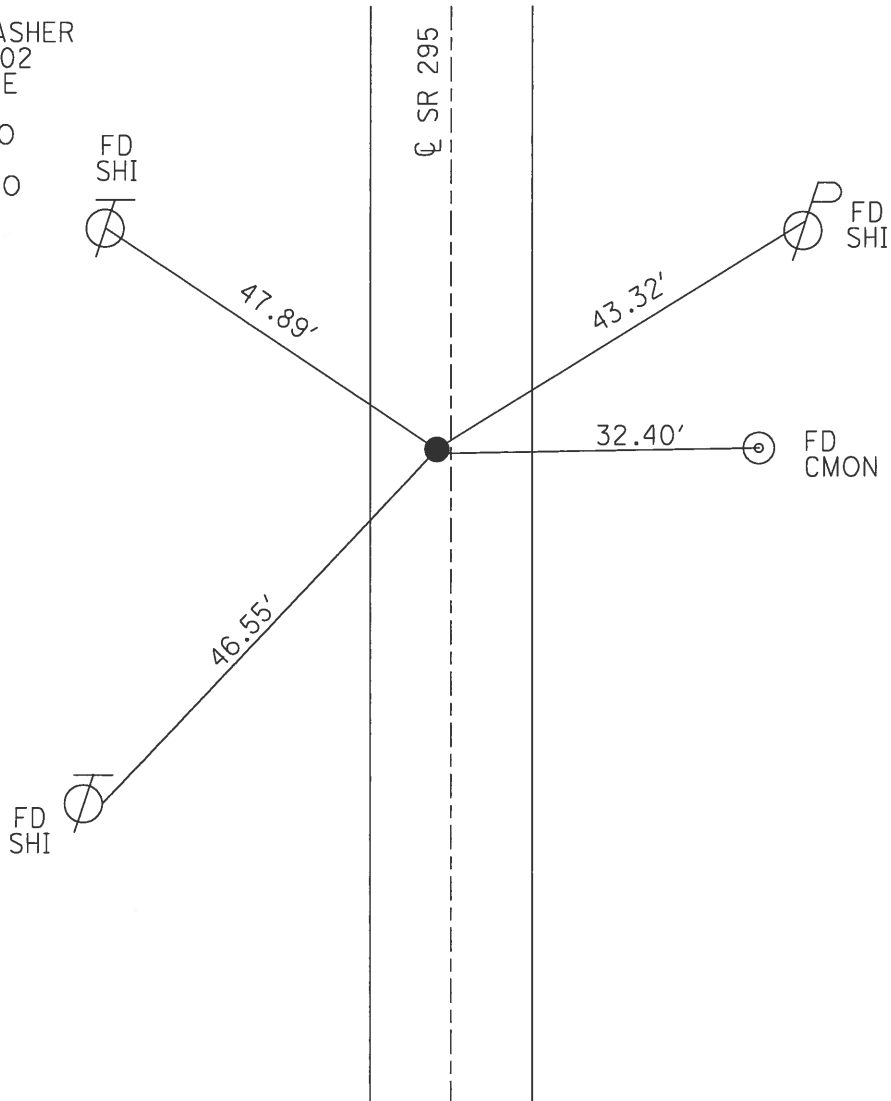
PERSONNEL	REFERENCE NO.	<u>28</u>	SHEET	<u>42</u>	OF	<u>45</u>
NOTES	<u>RHOADES</u>	DATE	<u>9/9/02</u>	ROUTE	<u>SR 295</u>	
H.C.	<u>O'DONNELL</u>	WEATHER	<u>SUNNY</u>	COUNTY	<u>LUCAS</u>	
R.C.	<u>HELDMAN</u>	TEMP.	<u>87°</u>	TOWNSHIP	<u>SWANTON</u>	
				SECTION	<u>15</u>	
				<u>T 7 N R 9 E</u>		

TYPE MONUMENT R.R.SPIKE
~~ON SURFACE~~ - BELOW 3"
 LEFT - ℄ PAV'T - ~~RIGHT~~ 1.5'
9.5' TO LT EDGE PAVEMENT
 S.L.M. 485+36



GRID: NORTHING: 695267.287 EASTING: 1605942.347

RECORD:
 SET MAG/WASHER
 DCH, 11/26/02
 FD R.R.SPIKE
 3" DOWN
 6/21/16, JFO
 UNCOVERED
 7/27/17, JFO



O.D.O.T. DISTRICT 2 SURVEY OFFICE

PERSONNEL

REFERENCE NO. 28

SHEET 42 OF 45

NOTES BROWN

DATE 9-9-02

ROUTE S.R. 295

H.C. HOMAN

WEATHER SUNNY

COUNTY LUCAS

R.C. BROWN

TEMP. 87°

TOWNSHIP SWANTON

SECTION 15

T 7 N R 9 E

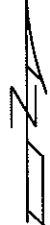
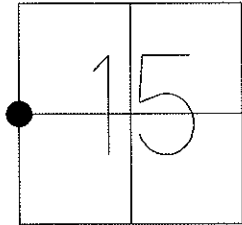
TYPE MONUMENT PK NAIL

ON SURFACE - ~~BELOW~~ ON

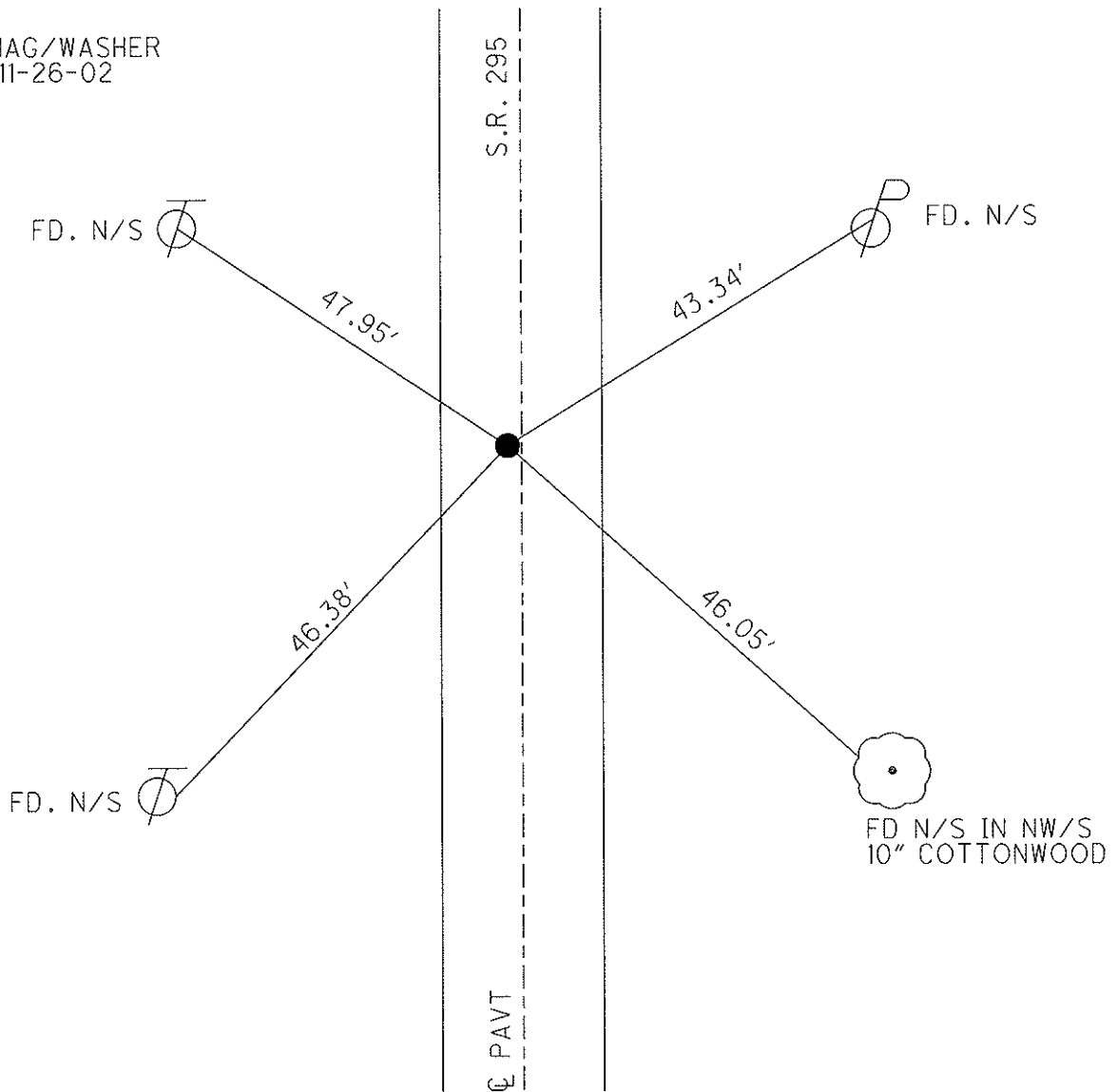
LEFT - Q PAV'T - ~~RIGHT~~ 1.5'

9.5 TO LT. EDGE PAVEMENT

S.L.M. 485+36



SET MAG/WASHER
DCH, 11-26-02



O.D.O.T. DISTRICT 2 SURVEY OFFICE

PERSONNEL

REFERENCE NO. 28

SHEET 33 OF 35

NOTES LOHRKE

H.C. RIPPLE

R.C. GEYMAN

DATE 8-2-91

WEATHER Pt CLOUDY

TEMP. +85

ROUTE S.R. 295

COUNTY LUCAS

TOWNSHIP SWANTON

SECTION 15

T. 7 N. R. 9 E

TYPE MONUMENT R.R. Spike

Set P.K./WASHER

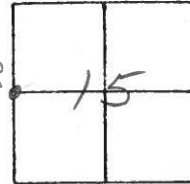
ON SURFACE - BELOW Yes

3-26-92

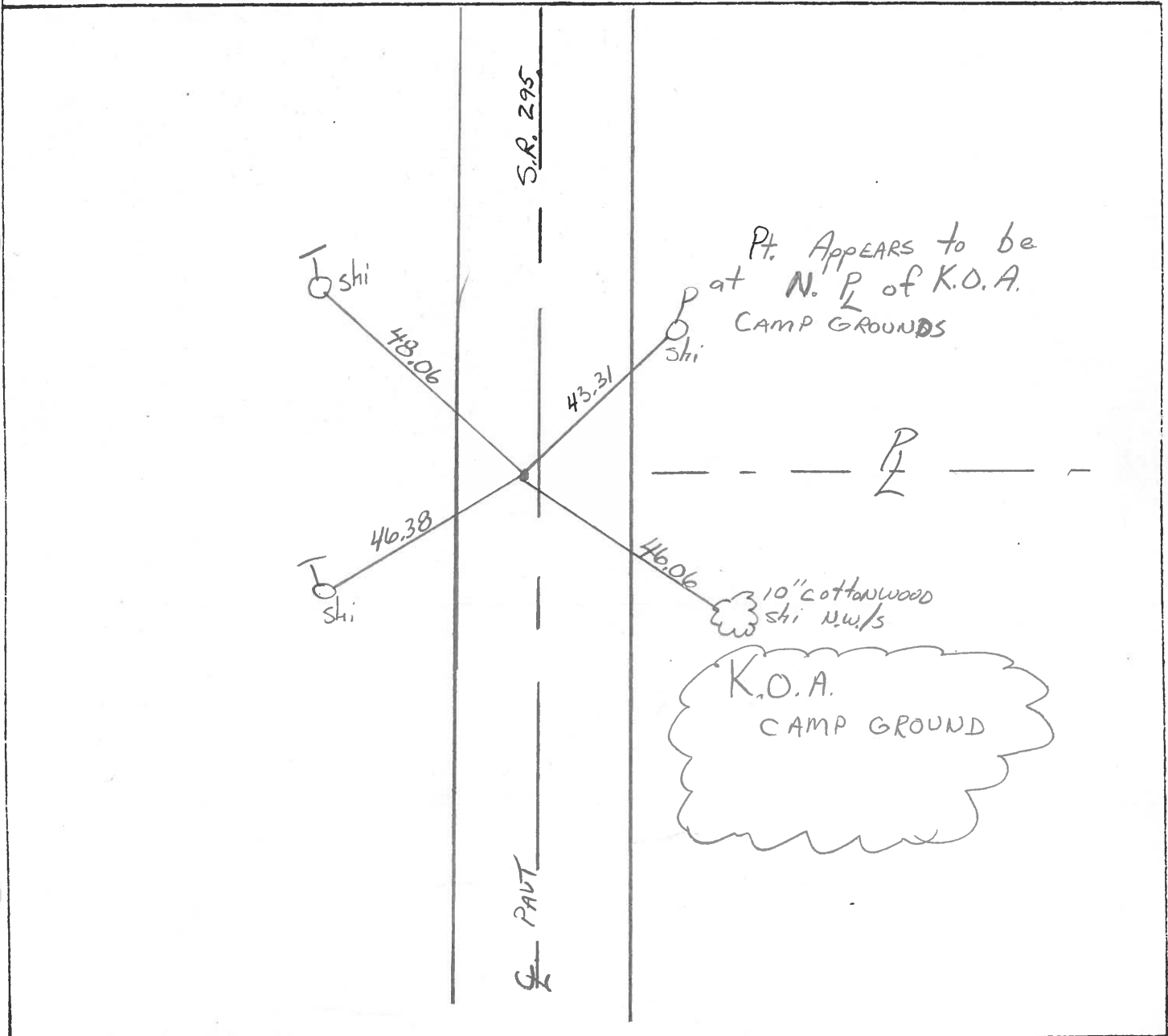
LEFT-☉ PAV'T. - RIGHT 1.5'

1/4 CORNER

9.0 TO Lt EDGE PAVEMENT



S.L.M. 485 + 36



County Lucas S.R. 295

Date 27 April 82

Township Swanton

Weather Cool

Section 15

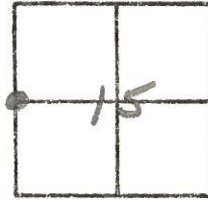
Temp. 50°

T_N, R_E

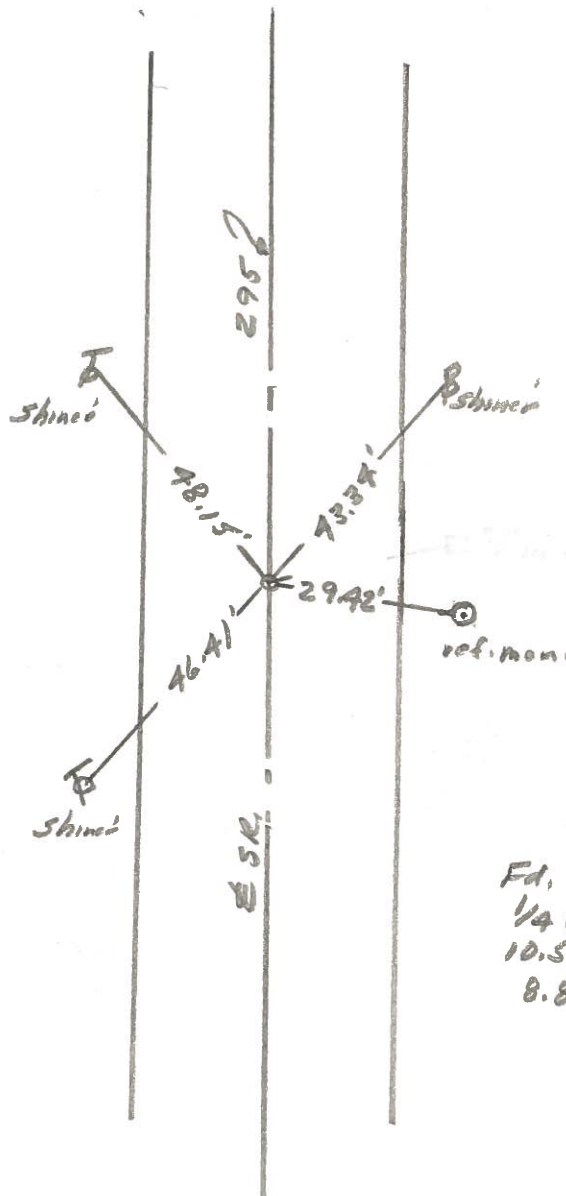
Personnel L. Stone

P. Neuser

R. Michalak



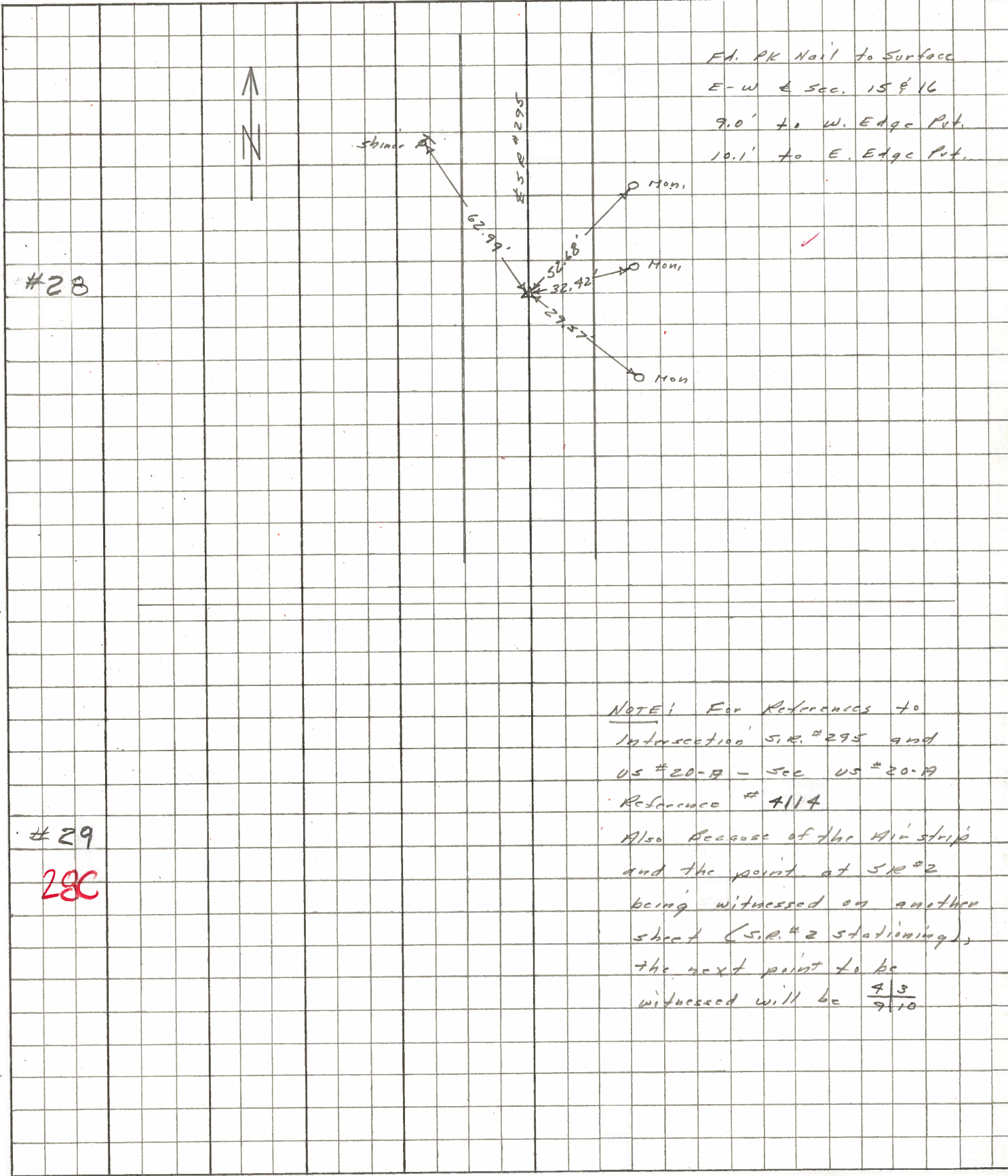
REF. NO. 28



Fd. RR Spl. To Surface
 1/4 Cor. Secs. 15-16
 10.5' To E. edge put.
 8.8' To W. edge put.

PERSONNEL	TITLE	PERSONNEL	TITLE	COUNTY	DATE
Stone	Notes			Lucas	12 June 68
Beck	Flag			S. R. # 295	WEATHER Fair
Michalak	Tape			SEC.	TEMP. 76°
Schrodre	Tape				

DESCRIPTION References to Control Points JOB NO. _____
 LEFT CENTER LINE RIGHT



#28

#29

28C

NOTE: For References to Intersection S.R. #295 and US #20-A - See US #20-A Reference # 7114

Also Because of the Win strip and the point at S.R. #2 being witnessed on another sheet (S.R. #2 stationing), the next point to be witnessed will be $\frac{43}{9.10}$