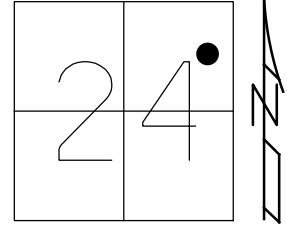


O.D.O.T. DISTRICT 2 SURVEY OFFICE (USE ONLY)

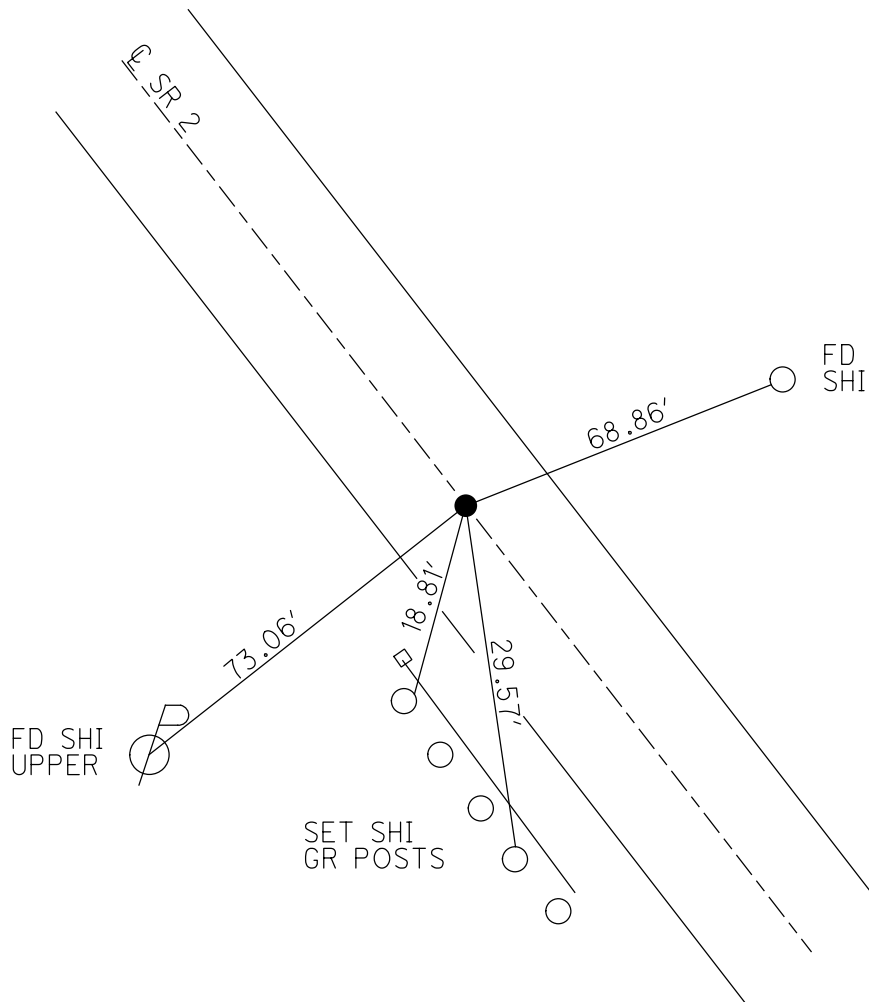
PERSONNEL \_\_\_\_\_ REFERENCE NO. 33 SHEET 17 OF 25  
 NOTES VAN DUSEN DATE 6/1/00 ROUTE SR 2  
 H.C. CORDES WEATHER CLOUDY COUNTY OTTAWA  
 R.C. BROWN TEMP. 80° TOWNSHIP CARROLL  
 DWG BY NIESE PID 107060 SECTION 24  
 T 7 N R 15 E

TYPE MONUMENT P.K./WASHER  
 ON SURFACE - ~~BELOW~~ ON  
 OFFSET ☉ PAVEMENT 3.4' ~~LT~~ : RT  
8.2' TO RT EDGE PAVEMENT  
 STATION: 696+99.54



HORZ.DATUM: NAD83(2011) GEOID: 2012A  
 GRID: NORTHING: 688958.591 EASTING: 1812404.948

RECORD: P.I.  
 STA 701+18  
 3/21/80  
 SET P.K.NAIL  
 ATOP P.K.NAIL  
 ATOP SM.SPIKE  
 9/5/80  
 SET P.K./WASHER  
 8/2/00, BVD  
 REF33  
 4/10/15, JLL  
 D.N.F.  
 4/1/19, JFO  
 SET MAG/WASHER  
 BY COORDINATES  
 5-11-23, DSA

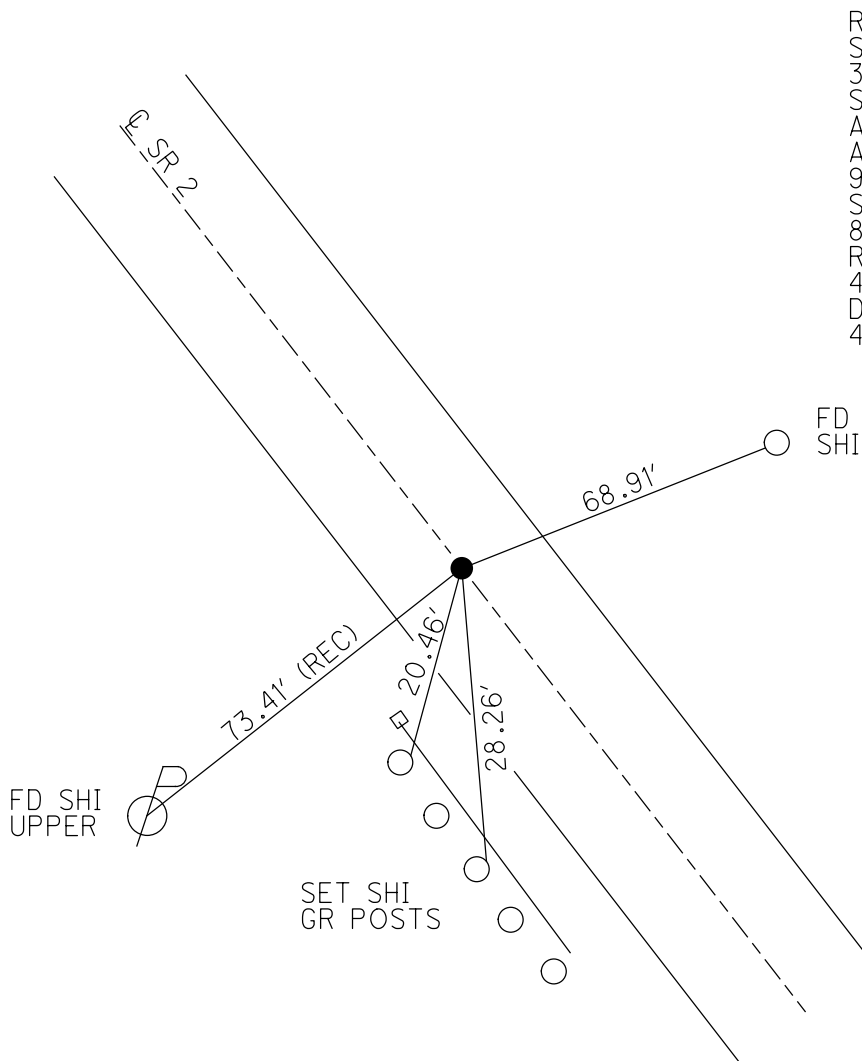
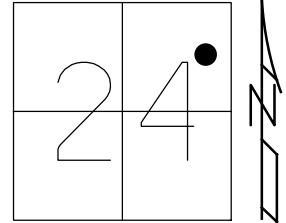


O.D.O.T. DISTRICT 2 SURVEY OFFICE (USE ONLY)

PERSONNEL \_\_\_\_\_ REFERENCE NO. 33 SHEET 17 OF 25  
 NOTES VAN DUSEN DATE 6/1/00 ROUTE SR 2  
 H.C. CORDES WEATHER CLOUDY COUNTY OTTAWA  
 R.C. BROWN TEMP. 80° TOWNSHIP CARROLL  
 DWG BY NIESE PID 107060 SECTION 24  
 T 7 N R 15 E

TYPE MONUMENT P.K./WASHER  
 ON SURFACE - ~~BELOW~~ ON  
 OFFSET CL PAVEMENT 3.8' LT : RT  
8.2' TO RT EDGE PAVEMENT  
 STATION: 696+99.54

HORZ.DATUM: NAD83(2011) GEOID: 2012A  
 GRID: NORTHING: 688958.591 EASTING: 1812404.948



RECORD: P.I.  
 STA 701+18  
 3/21/80  
 SET P.K.NAIL  
 ATOP P.K.NAIL  
 ATOP SM.SPIKE  
 9/5/80  
 SET P.K./WASHER  
 8/2/00, BVD  
 REF33  
 4/10/15, JLL  
 D.N.F.  
 4/1/19, JFO

O.D.O.T. DISTRICT 2 SURVEY OFFICE (USE ONLY)

PERSONNEL \_\_\_\_\_ REFERENCE NO. 33 SHEET 10 OF 15

NOTES VAN DUSEN DATE 6-1-00 ROUTE SR 2  
 H.C. CORDES WEATHER CLOUDY COUNTY OTTAWA  
 R.C. BROWN TEMP. 80°F TOWNSHIP CARROLL  
 \_\_\_\_\_ SECTION 24  
 \_\_\_\_\_ T 7 N R 15 E

TYPE MONUMENT PK/WASHER

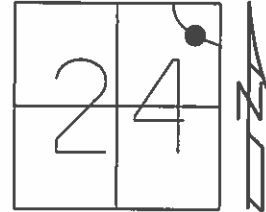
ON SURFACE - ~~BELOW~~ ON \_\_\_\_\_

~~LEFT~~ - Q PAV'T - RIGHT 3.8'

8.2' TO RT EDGE PAVEMENT

S.L.M. 701+51.22

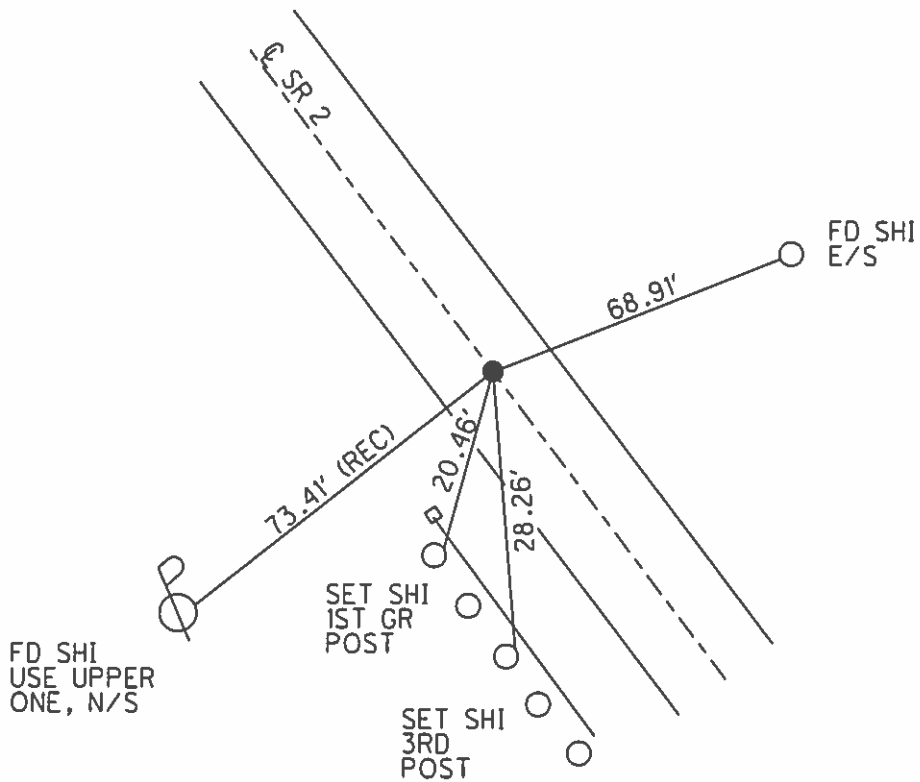
Grid: Northing: 688958.5907 Easting: 1812404.9480



RECORD 3-21-1980  
 P.I. SPIRAL  
 STA. 701+18  
 SET PK. NAIL (9-5-1980)  
 ATOP PK. NAIL  
 ATOP SMALL SPK

RESET PK/WASHER  
 8-2-00, BVD

GPS, REF33  
 4-10-15, JLL



# O.D.O.T. DISTRICT 2 SURVEY OFFICE

PERSONNEL

REFERENCE NO. 33

SHEET 10 OF 15

NOTES VANDUSEN

H.C. CORDEN

DATE 6-1-00

ROUTE 2

R.C. BROWN

WEATHER SUNNY

COUNTY OTTAWA

TEMP. +80° F

TOWNSHIP CARROLL

SECTION 24

TD. N. R. 15 E

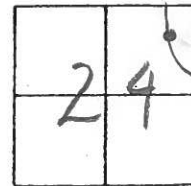
TYPE MONUMENT PK/WASHER

ON SURFACE - ~~BELOW~~ ON

LEFT - & PAV'T. - RIGHT 3.8'

8.2' TO RT EDGE PAVEMENT

S.L.M. 701+49



RECORD: 3-21-1980

P.I. SPIRAL

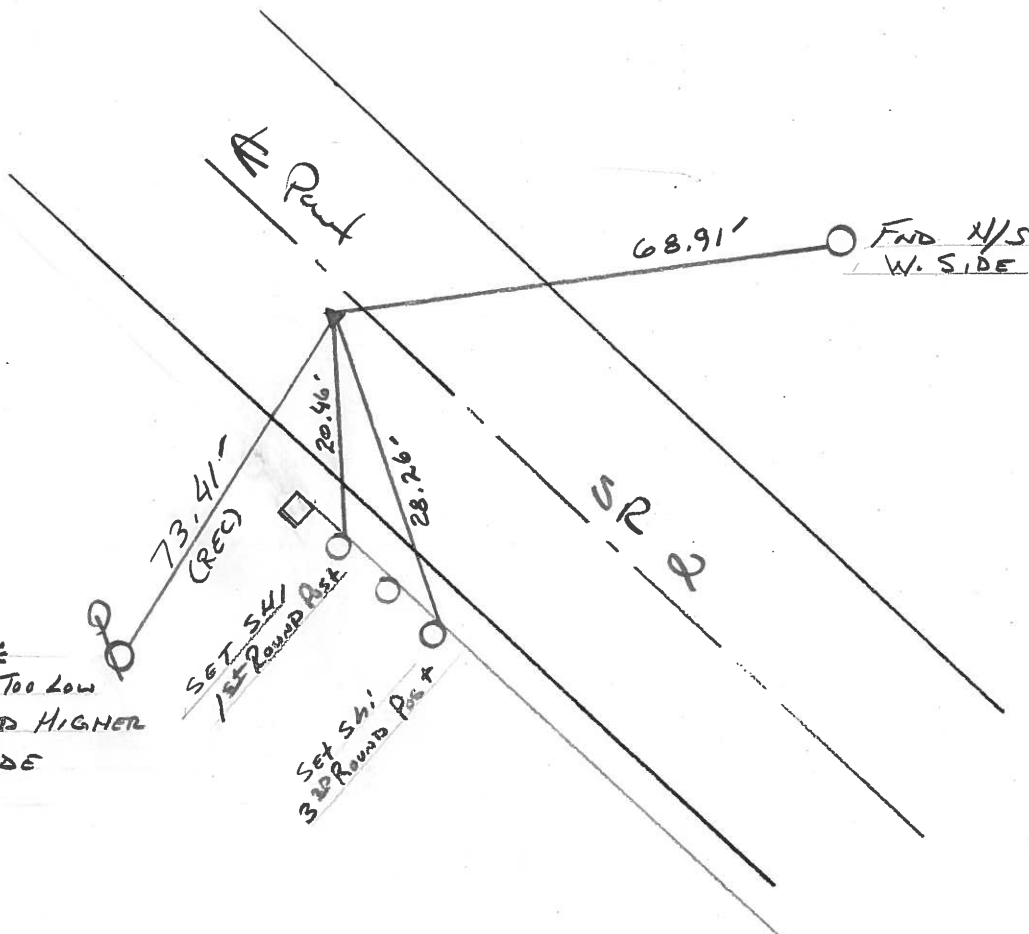
Sta 701+18

SET PK NAIL (9-5-1980)

ATOP PK NAIL

ATOP SMALL SPK.

RESET PK/WASHER  
 8-2-00  
 BYD



RECORD:

Fd N/S - Too Low

REPLACED HIGHER

N. SIDE

O.D.O.T. DISTRICT 2 SURVEY OFFICE

PERSONNEL

REFERENCE NO. 33

SHEET 9 OF 13

NOTES CHENEY

H.C. RIPPLE

R.C. BARBOUR

GEYMAN

DATE 4-21-1993

WEATHER Mostly Cloudy

TEMP. 35°

ROUTE #2

COUNTY OTAWA

TOWNSHIP CARROLL

SECTION \_\_\_\_\_

T 7 N R 15 E

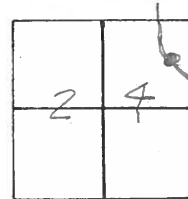
TYPE MONUMENT PK / WASHER

ON SURFACE - ~~BELOW~~ ON

~~LEFT~~ - C. PAV'T. - RIGHT 3.8'

8.2' TO Rt. EDGE PAVEMENT

S.L.M. 70147



RECORD: 3-21-1980

P.I. SPIRAL

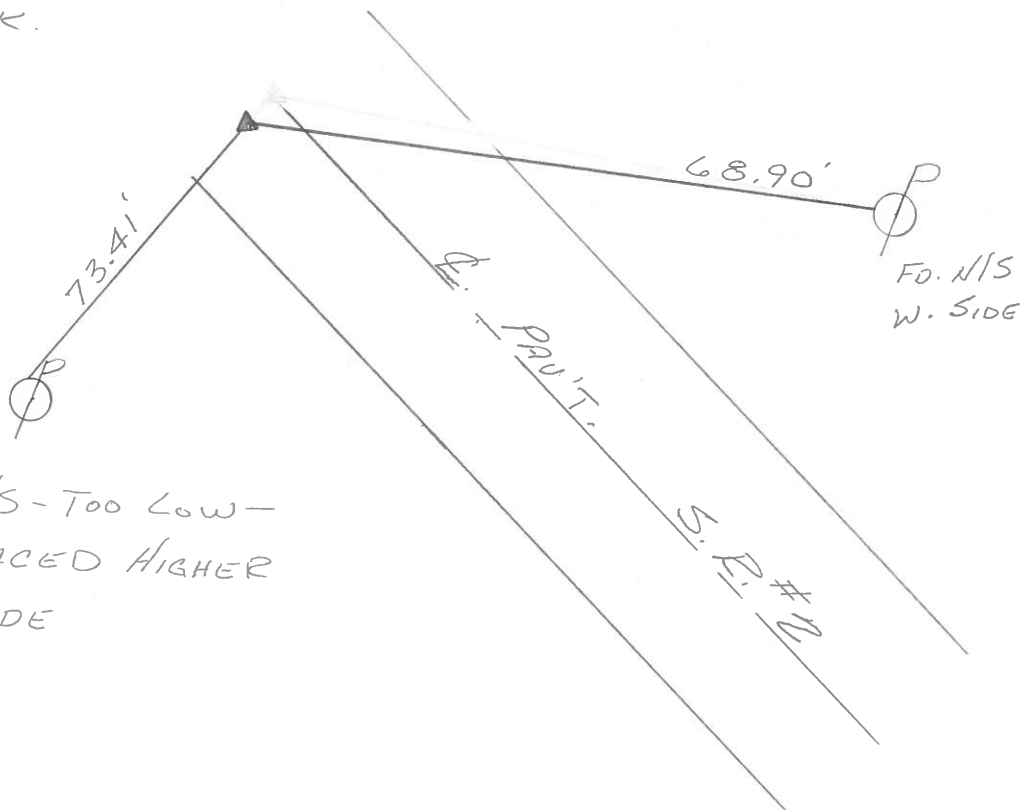
STA. 701418

SET P.K. NAIL (9-5-1980)

ATOP P.K. NAIL

ATOP SMALL SPK.

SET PK/WASHER  
6-14-1993  
R.C.C.



FD N/S - Too Low -  
REPLACED HIGHER  
N. SIDE

OD.OT. DISTRICT 2 SURVEY OFFICE

Sht. \_\_\_ of \_\_\_

County Ottawa S.R. # 2

Date 3-21-80

Township Carroll

Weather Fair

Section 24

Temp. 42°

T<sub>2</sub>N, R<sub>15</sub>E

Personnel Schneider

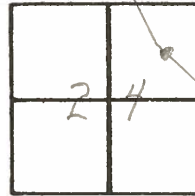
Mosser

Barbour

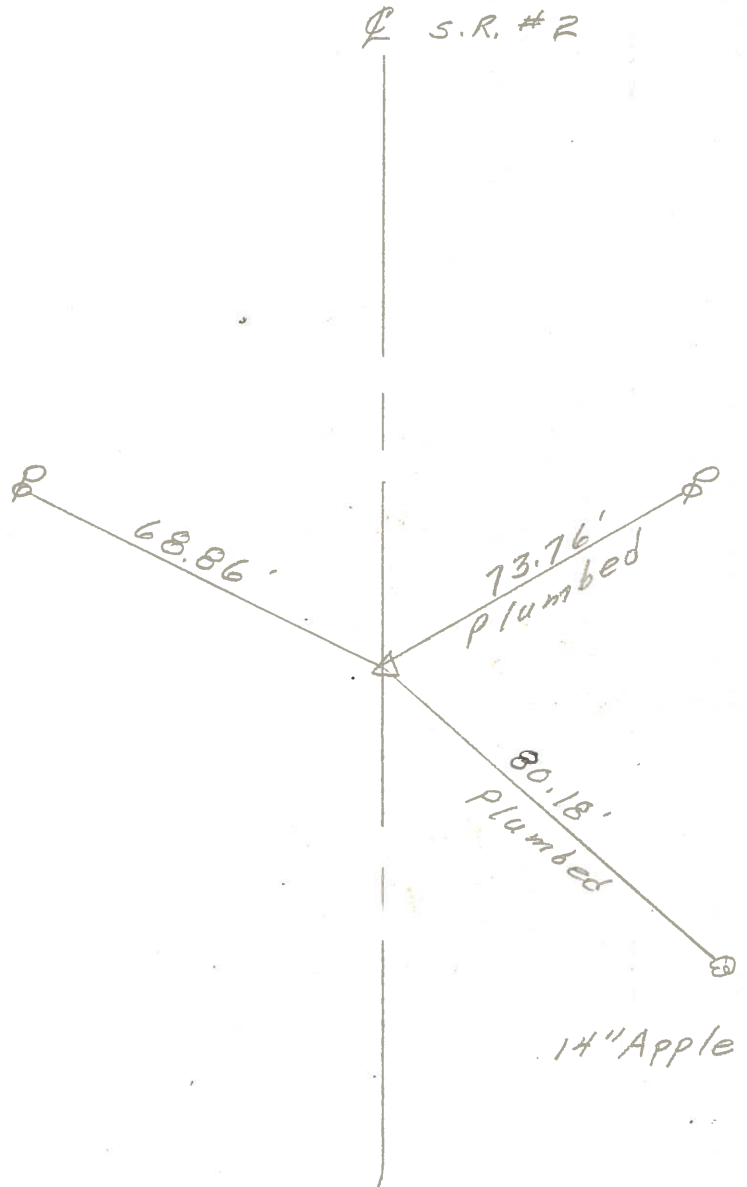
Ripple

Geyman

33



⊙ S.R. #2



P.I. spiral

701+18

small spk.

P.K. on top

4' RT. of ⊙

Reset P.K. Nail

8-5-80

PERSONNEL TITLE PERSONNEL TITLE

COUNTY Ottawa

DATE 11-7-74  
7-29-74

S. R. 2

WEATHER Fair

SEC. Off 2 - 13.07 Br.

TEMP. 80°

DESCRIPTION Carroll Twp.

JOB NO. \_\_\_\_\_

LEFT

CENTER LINE

RIGHT

