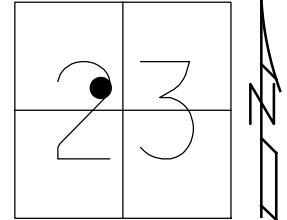


O.D.O.T. DISTRICT 2 SURVEY OFFICE (USE ONLY)

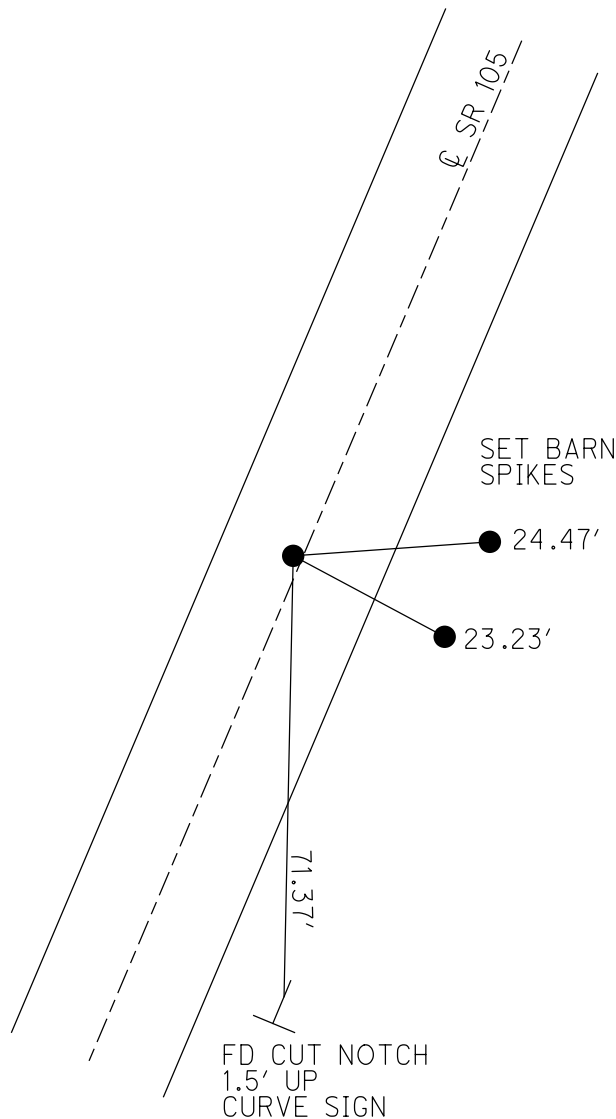
PERSONNEL _____ REFERENCE NO. 8 SHEET 9 OF 33
 NOTES RHOADES DATE 7/20/21 ROUTE SR 105
 H.C. O'DONNELL WEATHER CLEAR COUNTY OTTAWA
 R.C. RHOADES TEMP. 75° TOWNSHIP HARRIS
 DWG BY RHOADES PID CHIP SEAL SECTION 23
 T 6 N R 13 E

TYPE MONUMENT MAG/WASHER
 ON SURFACE - ~~BELOW~~ ON
 OFFSET 0.9' LT : ~~RT~~
9.5' TO LT EDGE PAVEMENT
 STATION: 28+40



HORIZ.DATUM: NAD83 2011 GEOID: NAVD88 2018
 GRID: NORTHING: 657122.807 EASTING: 1740180.652

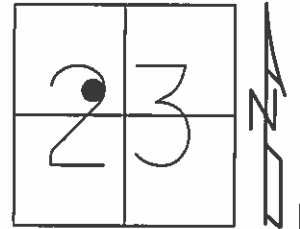
RECORD: P.I.
 SET P.K./WASHER
 9/26/94, MB
 FD P.K./WASHER
 OTTREF9
 5/3/13, DCH
 SET MAG/WASHER
 FINREFOTT8
 7/11/13, SDC
 FD MAG/WASHER
 REF8
 7/20/21, JFO
 10/20/21, JMR



O.D.O.T. DISTRICT 2 SURVEY OFFICE (USE ONLY)

PERSONNEL	REFERENCE NO. <u>8</u>	SHEET <u>9</u> OF <u>33</u>
NOTES <u>RHOADES</u>	DATE <u>7/11/13</u>	ROUTE <u>SR 105</u>
H.C. <u>CODER</u>	WEATHER <u>SUNNY</u>	COUNTY <u>OTTAWA</u>
R.C. <u>RHOADES</u>	TEMP. <u>75°</u>	TOWNSHIP <u>HARRIS</u>
		SECTION <u>23</u>
		T <u>6</u> N R <u>13</u> E

TYPE MONUMENT P.K./WASHER
~~ON SURFACE~~ - BELOW 1.5'
 LEFT - Q PAV'T - ~~RIGHT~~ 0.9'
9.5' TO LT EDGE PAVEMENT
 S.L.M. 28+40

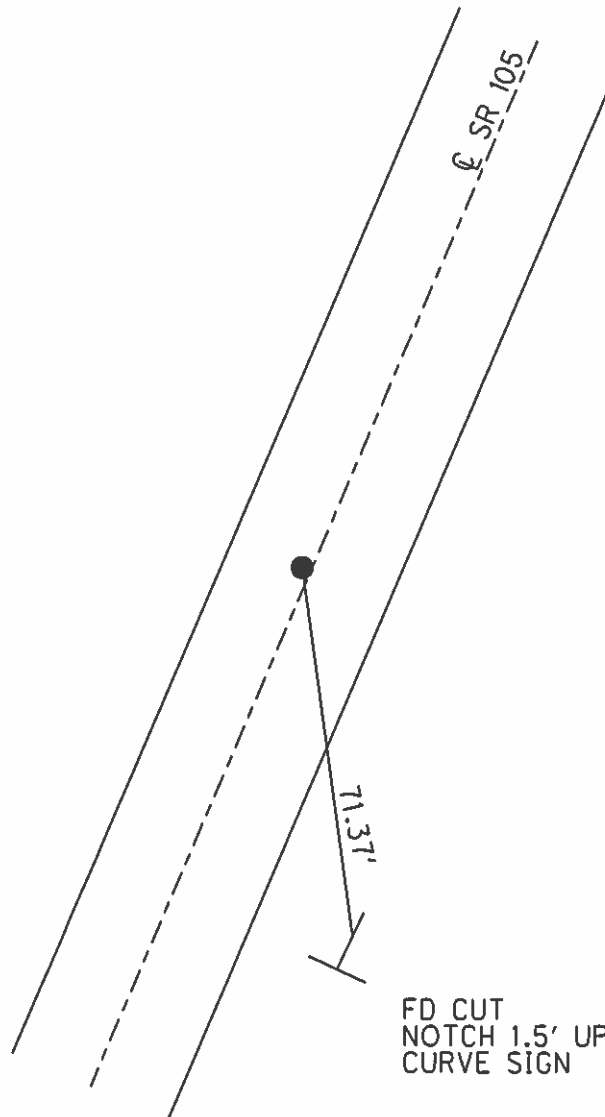


Grid: Northing: 657122.812 Easting: 1740180.561

RECORD: P.I.
 RESET P.K./WASHER
 9/26/94, MB

FD P.K.
 GPS, OTTREF9

SET MAG/WASHER
 7/9/13, SDC
 GPS, FINREFOTT8
 7/11/13, SDC



O.D.O.T. DISTRICT 2 SURVEY OFFICE

PERSONNEL

REFERENCE NO. 8 & 9

SHEET 6 OF 26

NOTES BARNHISEL

H.C. CORDES

DATE 9-26-94

ROUTE 105

R.C. SLOUAK

WEATHER Cloudy

COUNTY OTTAWA

TEMP. +40°

TOWNSHIP HARRIS

SECTION 23

T 6 N R 13 E

#8

#9

TYPE MONUMENT PK & WASHER PK & WASHER

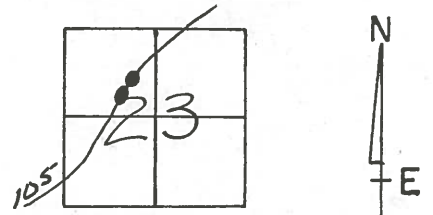
~~CONCRETE~~ SURFACE - BELOW 1 1/2" 1 1/2"

LEFT-~~C~~ PAW'T. - ~~SET~~ 0.9 LT ON E

9.5 LT
10.1 TO RT EDGE PAVEMENT

S.L.M. 28+40

30+91

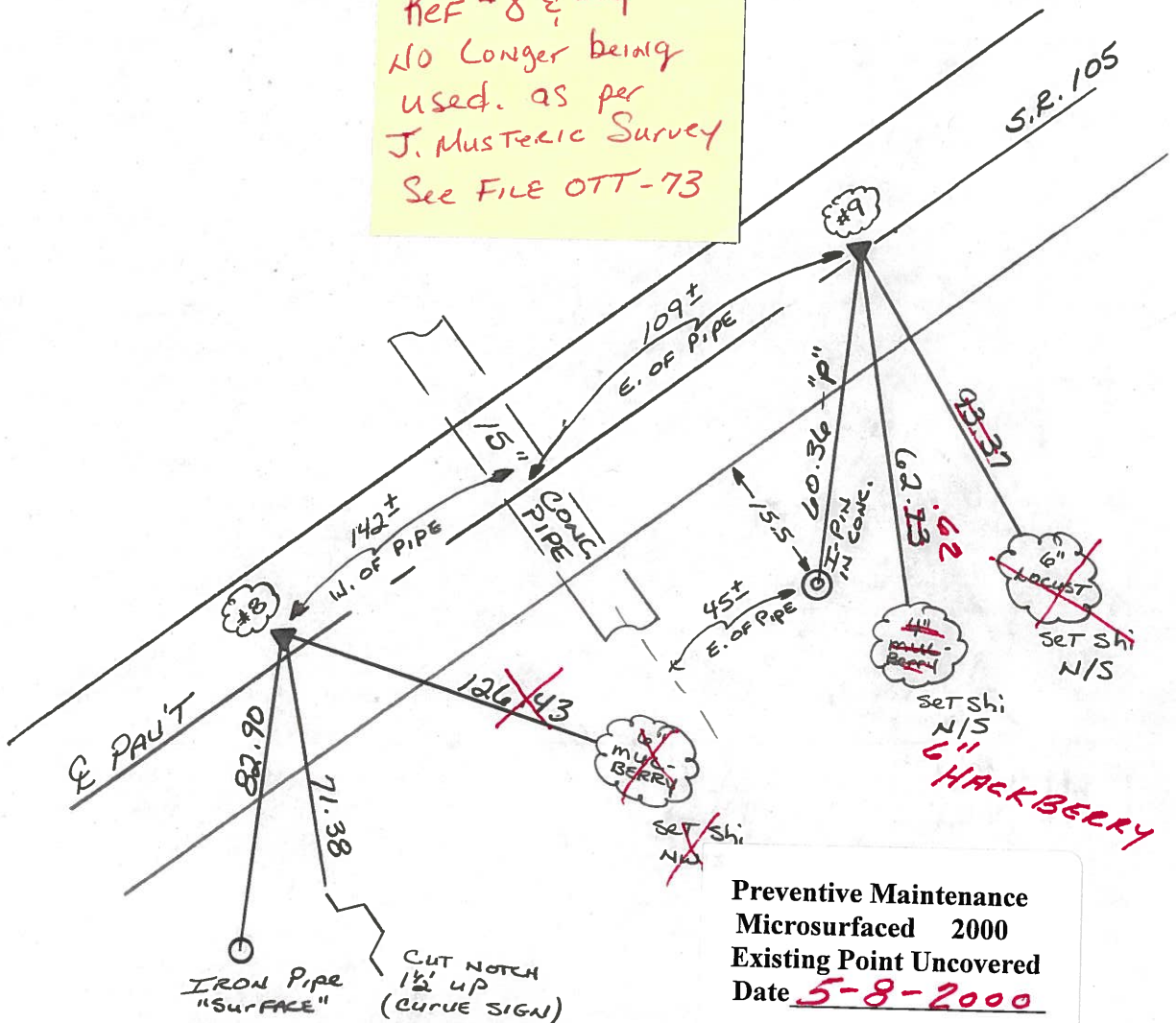


RECORD: #8 P.I.

Reset PK'S & WASHERS
9-26-94
MB

RECORD: #9 P.I.

REF #8 & #9
NO LONGER BEING
USED. AS PER
J. MUSTERIC SURVEY
SEE FILE OTT-73



Preventive Maintenance
Microsurfaced 2000
Existing Point Uncovered
Date 5-8-2000

PERSONNEL TITLE PERSONNEL TITLE

COUNTY Ottawa

DATE 8-5-74

S. R. 105

WEATHER Sunny

SEC 14 & 23

TEMP. 75°

DESCRIPTION

Harris Twp.

JOB NO.

