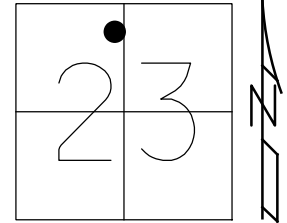


O.D.O.T. DISTRICT 2 SURVEY OFFICE (USE ONLY)

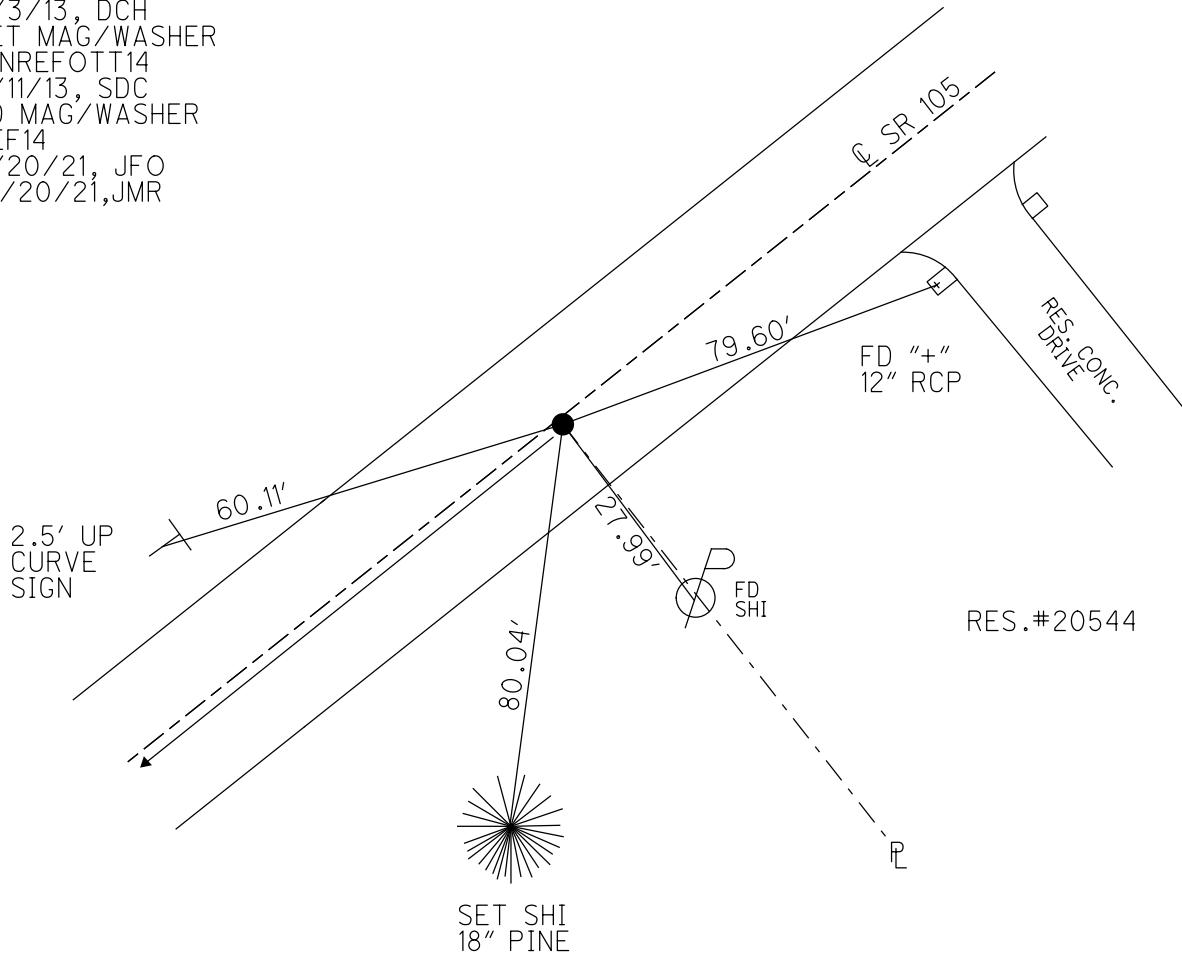
PERSONNEL \_\_\_\_\_ REFERENCE NO. 14 SHEET 16 OF 33  
 NOTES RHOADES DATE 7/20/21 ROUTE SR 105  
 H.C. O'DONNELL WEATHER SUNNY COUNTY OTTAWA  
 R.C. RHOADES TEMP. 80° TOWNSHIP HARRIS  
 DWG BY RHOADES PID CHIP SEAL SECTION 23  
 T 6 N R 13 E

TYPE MONUMENT MAG/WASHER  
 ON SURFACE - ~~BELOW~~ ON  
 OFFSET  $\odot$  PAVEMENT 1.0' ~~ET~~ : RT  
9.1' TO RT EDGE PAVEMENT  
 STATION: 42+25



HORZ.DATUM: NAD83 2011 GEOID: NAVD88 2018  
 GRID: NORTHING: 658121.797 EASTING: 1741094.841

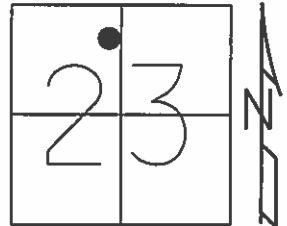
RECORD: P.O.T.  
 SET P.K./WASHER  
 9/28/94, MB  
 FD P.K.NAIL  
 OTTREF15  
 5/3/13, DCH  
 SET MAG/WASHER  
 FINREFOTT14  
 7/11/13, SDC  
 FD MAG/WASHER  
 REF14  
 7/20/21, JFO  
 10/20/21, JMR



O.D.O.T. DISTRICT 2 SURVEY OFFICE (USE ONLY)

PERSONNEL	REFERENCE NO. <u>14</u>	SHEET <u>16</u> OF <u>33</u>
NOTES <u>HOMAN</u>	DATE <u>5/3/13</u>	ROUTE <u>SR 105</u>
H.C. <u>HOMAN</u>	WEATHER <u>CLOUDY</u>	COUNTY <u>OTTAWA</u>
R.C. <u>ROUSOS</u>	TEMP. <u>65°</u>	TOWNSHIP <u>HARRIS</u>
		SECTION <u>23</u>
		T <u>6</u> N R <u>13</u> E

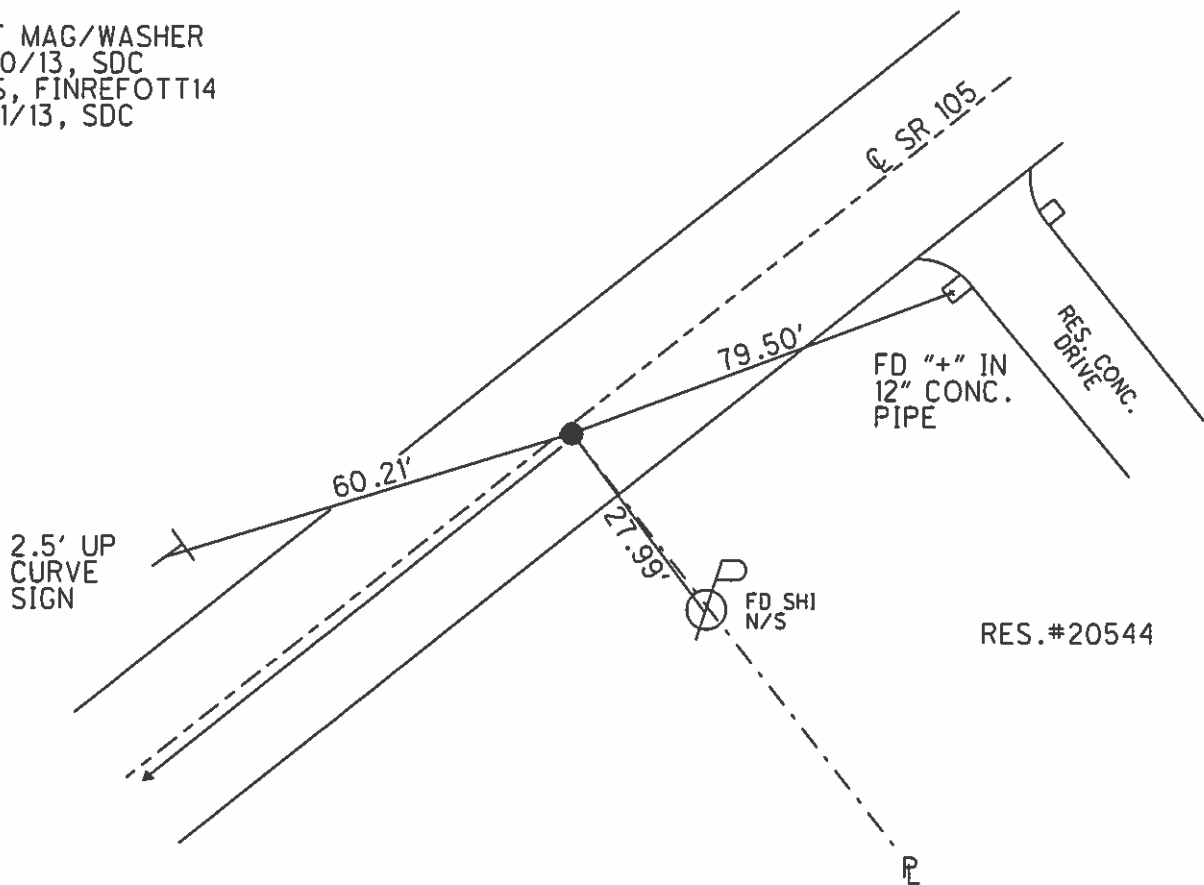
TYPE MONUMENT P.K.NAIL  
 ON SURFACE - ~~BELOW~~ ON  
~~LEFT~~ - Q PAV'T - RIGHT 1.0'  
9.1' TO RT EDGE PAVEMENT  
 S.L.M. 42+25  
 Grid: Northing: 658121.895 Easting: 1741094.793



RECORD: P.O.T.  
 RESET P.K./WASHER  
 9/28/94, MB

FD P.K.  
 GPS, OTTREF15

SET MAG/WASHER  
 7/10/13, SDC  
 GPS, FINREFOTT14  
 7/11/13, SDC



O.D.O.T. DISTRICT 2 SURVEY OFFICE

PERSONNEL

REFERENCE NO. 14

SHEET 11 OF 26

NOTES BARNHISEL

H.C. CORDES

DATE 9-28-94

ROUTE 105

R.C. SLOVAK

WEATHER SUNNY - WINDY

COUNTY OTTAWA

TEMP. +55°

TOWNSHIP HARRIS

SECTION 23

T6 N R 13 E

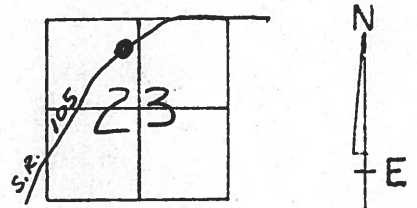
TYPE MONUMENT P.K. NAIL

~~ON SURFACE~~ - BELOW 6"

~~LEFT - C~~ PAV'T. - RIGHT 1.0

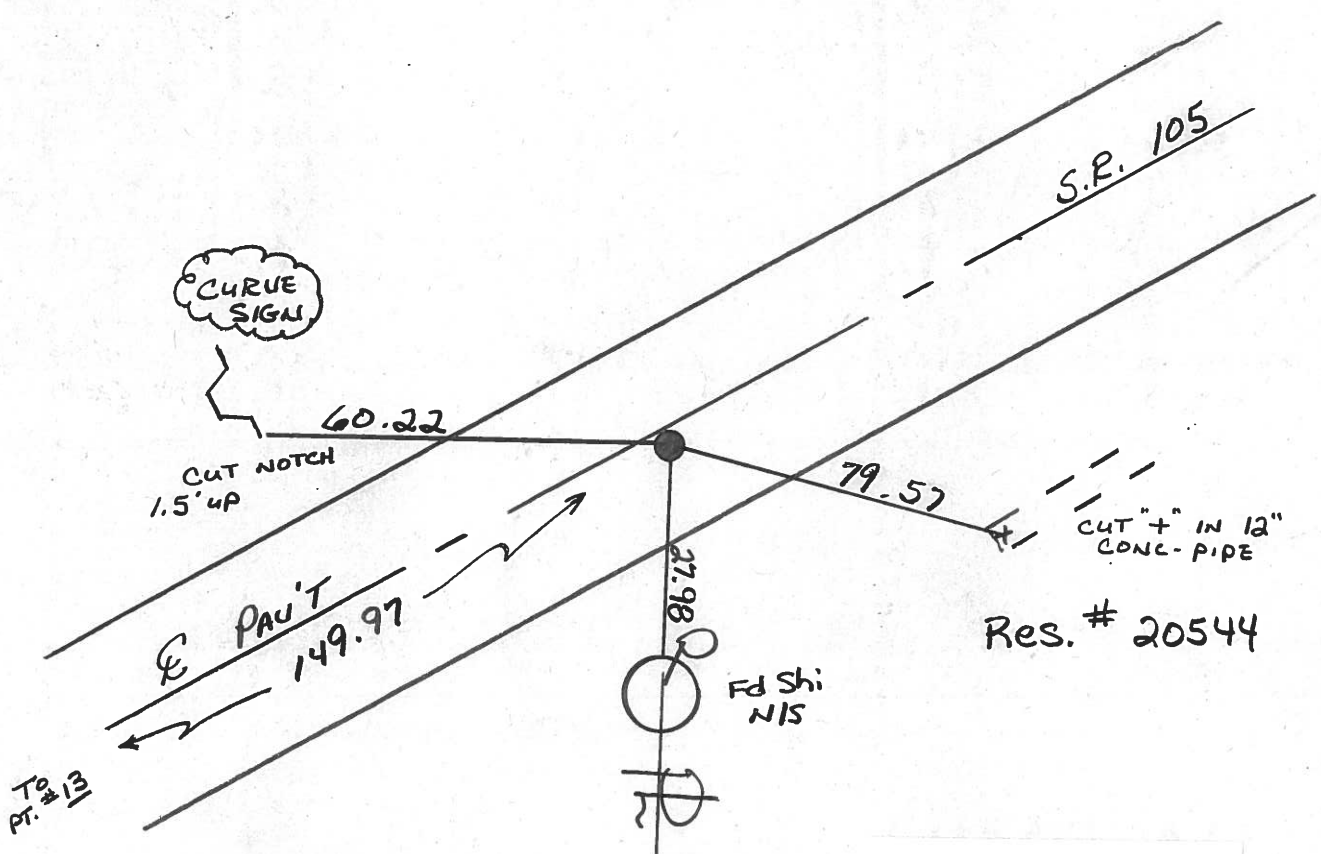
9.1 TO RT EDGE PAVEMENT

S.L.M. 42+25



RECORD : P.O.T.

RESET P.K. & WASHER  
9-28-94  
M.B.



Res. # 20544

Fd Shi  
NIS

Preventive Maintenance  
Microsurfaced 2000  
Existing Point Uncovered  
Date 5-8-2000

PERSONNEL TITLE PERSONNEL TITLE

COUNTY O'Hawa

DATE 8-5-74

S. R. 105

WEATHER Fair

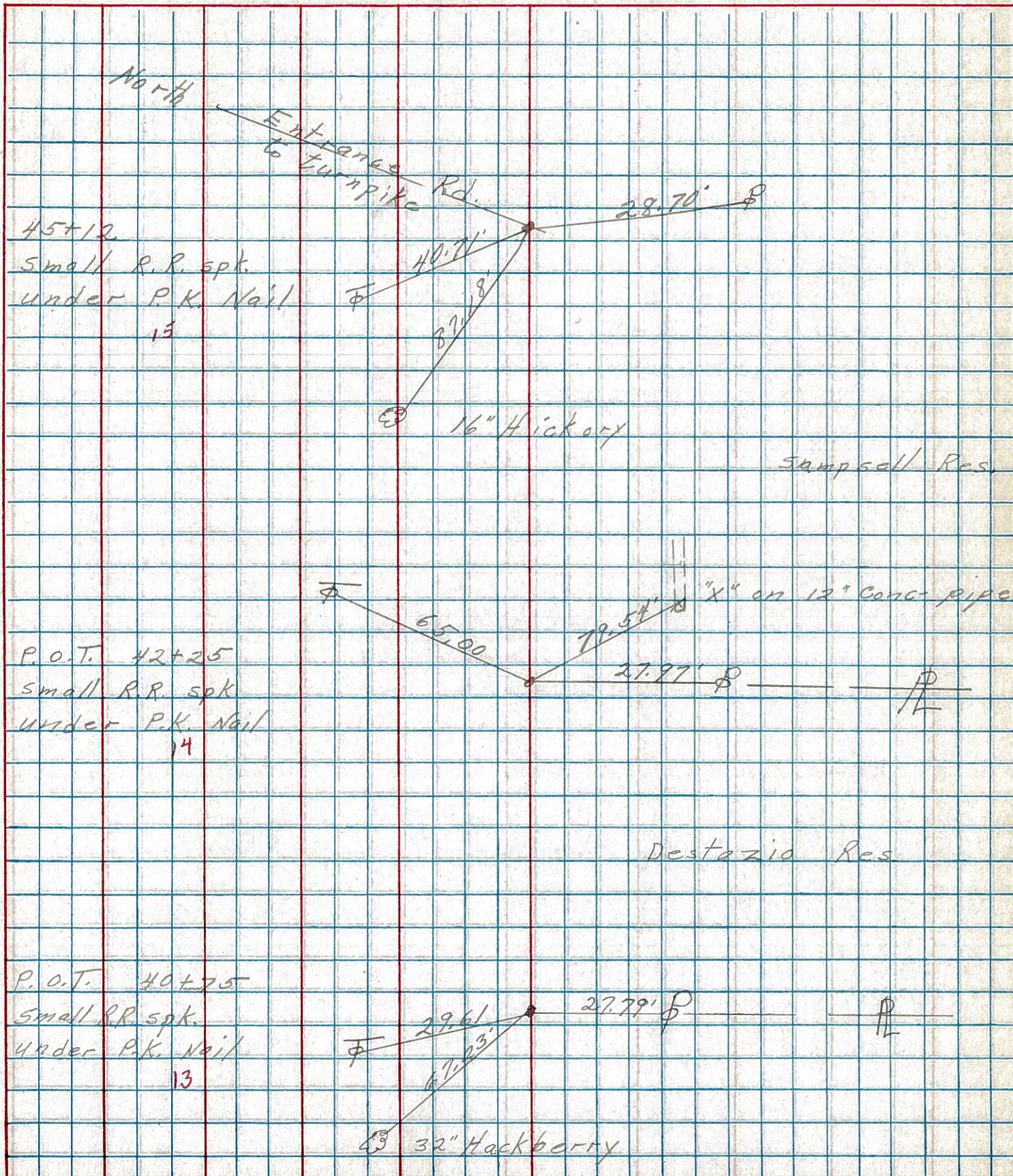
SEC. 14 23

TEMP. 75°

DESCRIPTION Harris Twp

JOB NO.

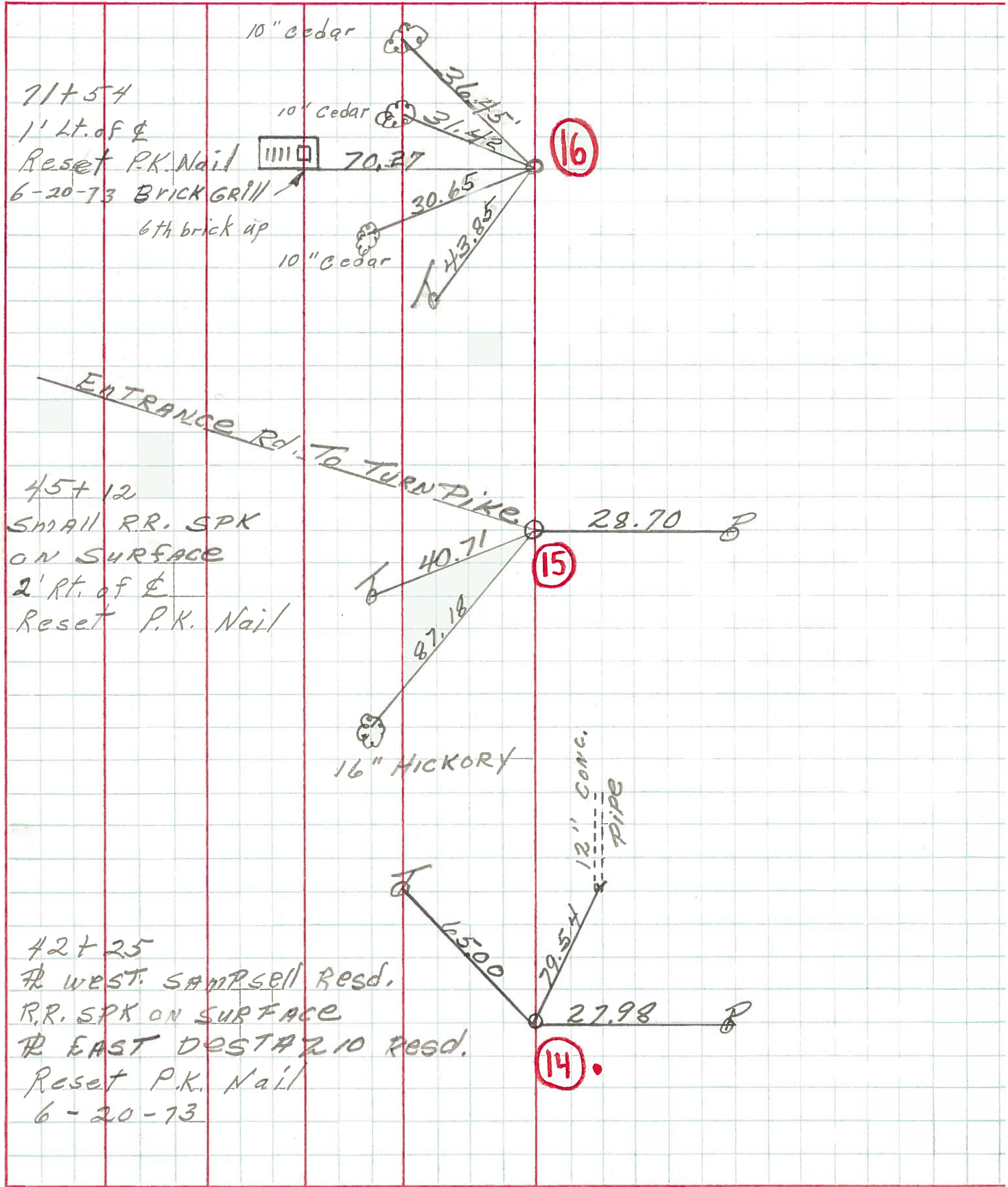
LEFT CENTER LINE RIGHT



PERSONNEL	TITLE	PERSONNEL	TITLE
<u>MOSSER</u>			
<u>BARBOUR</u>			
<u>GEYMAN</u>			
<u>VINSON</u>			

COUNTY OTT. DATE 8-18-71  
 S. R. 105 WEATHER SUNNY  
 SEC. OTT. CO. LINE TO HARBOUR OAR TEMP. 65°

DESCRIPTION TIES FOR CONTROL TIES JOB NO. \_\_\_\_\_



PERSONNEL	TITLE	PERSONNEL	TITLE	COUNTY	Ottawa	DATE	6-24-6
Schneider				S. R.	105	WEATHER	Cloudy
Barbour				SEC.	Oak Harbor San. Co. Line to	TEMP.	75°
Redding							

DESCRIPTION Ties for Control Points JOB NO. \_\_\_\_\_

