

O.D.O.T. DISTRICT 2 SURVEY OFFICE (USE ONLY)

PERSONNEL _____ REFERENCE NO. 15 SHEET 17 OF 33
 NOTES RHOADES DATE 7/20/21 ROUTE SR 105
 H.C. O'DONNELL WEATHER SUNNY COUNTY OTTAWA
 R.C. RHOADES TEMP. 80° TOWNSHIP HARRIS
 DWG BY RHOADES PID CHIP SEAL SECTION 23
 T 6 N R 13 E

TYPE MONUMENT MAG/WASHER

ON SURFACE - ~~BELOW~~ ON _____

OFFSET ☐ PAVEMENT 2.0' ~~±~~ : RT

8.1' TO RT EDGE PAVEMENT

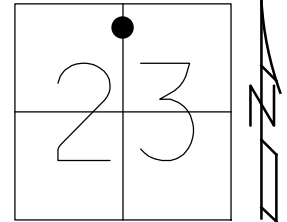
STATION: 45+12

HORZ.DATUM: NAD83 2011

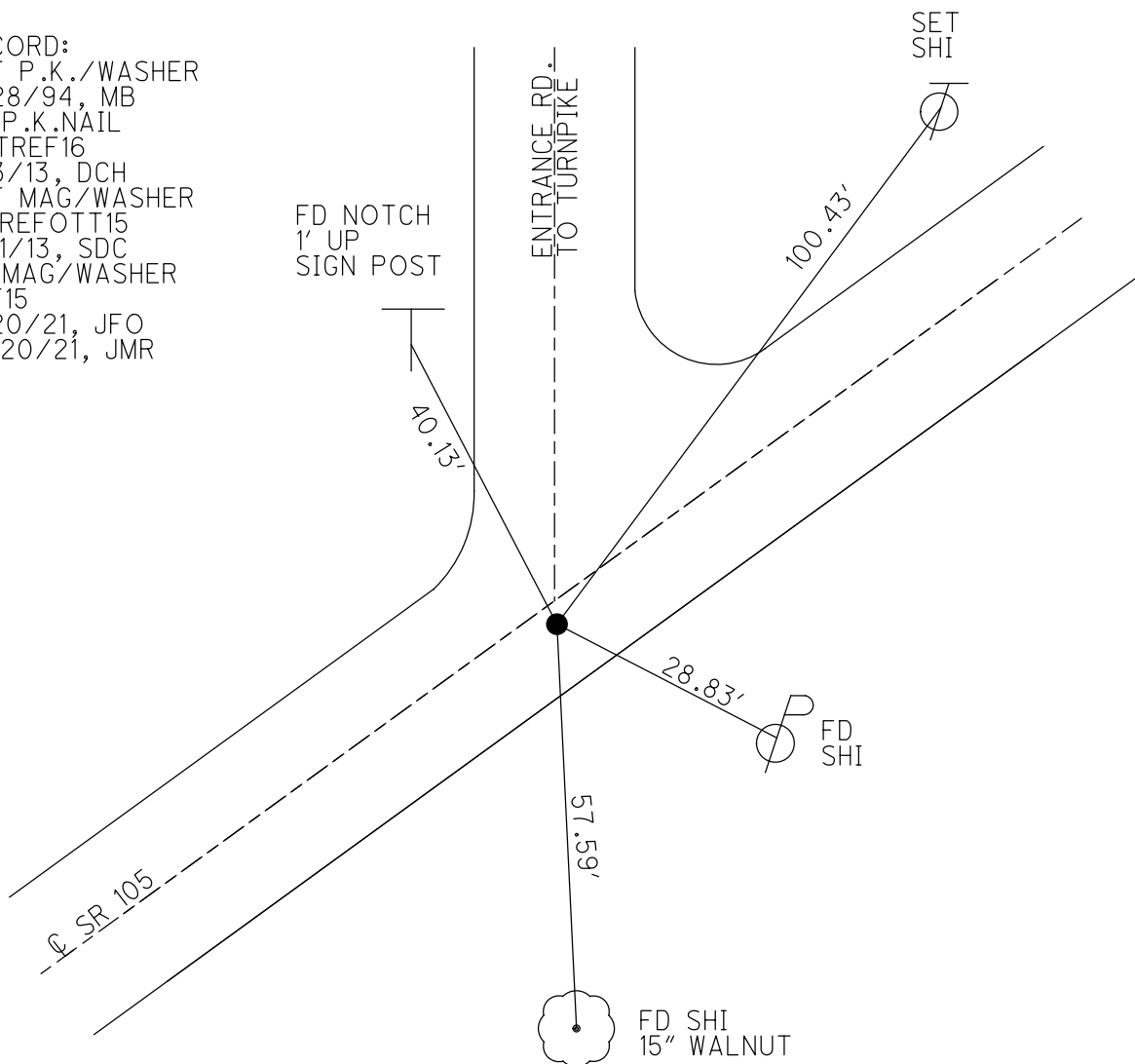
GEOID: NAVD88 2018

GRID: NORTHING: 658290.573

EASTING: 1741327.426



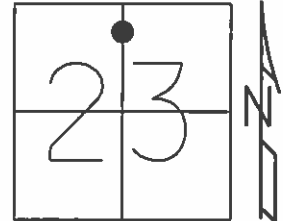
RECORD:
 SET P.K./WASHER
 9/28/94, MB
 FD P.K.NAIL
 OTTREF16
 5/3/13, DCH
 SET MAG/WASHER
 FINREFOTT15
 7/11/13, SDC
 FD MAG/WASHER
 REF15
 7/20/21, JFO
 10/20/21, JMR



O.D.O.T. DISTRICT 2 SURVEY OFFICE (USE ONLY)

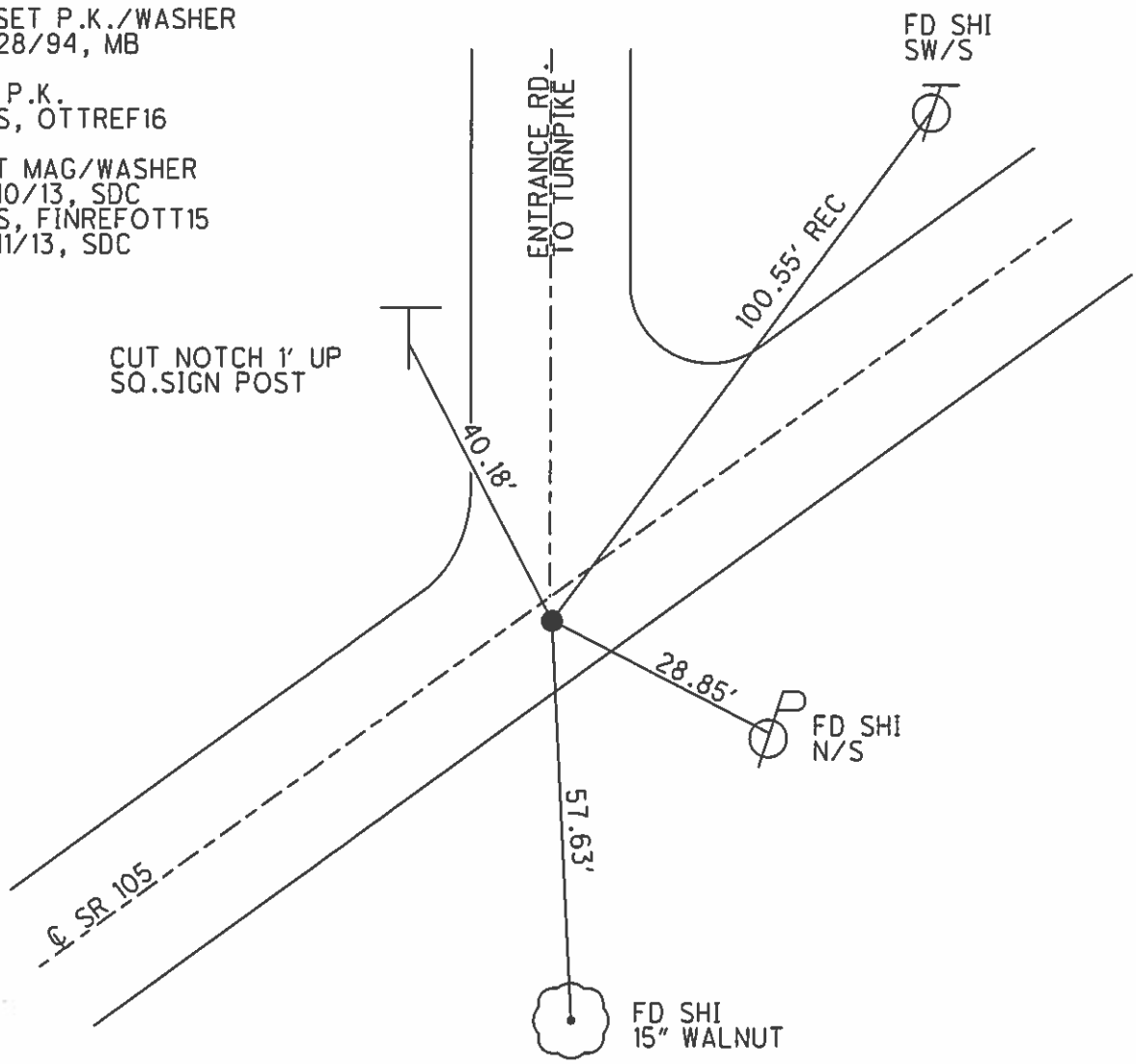
PERSONNEL	REFERENCE NO. <u>15</u>	SHEET <u>17</u> OF <u>33</u>
NOTES <u>HOMAN</u>	DATE <u>5/3/13</u>	ROUTE <u>SR 105</u>
H.C. <u>HOMAN</u>	WEATHER <u>CLOUDY</u>	COUNTY <u>OTTAWA</u>
R.C. <u>ROUSOS</u>	TEMP. <u>65°</u>	TOWNSHIP <u>HARRIS</u>
		SECTION <u>23</u>
		T <u>6</u> N R <u>13</u> E

TYPE MONUMENT P.K.NAIL
 ON SURFACE - ~~BELOW~~ ON
~~LEFT~~ - C PAV'T - RIGHT 2.0'
8.1' TO RT EDGE PAVEMENT
 S.L.M. 45+12



Grid: Northing: 658290.646 Easting: 1741327.361

RESET P.K./WASHER
 9/28/94, MB
 FD P.K.
 GPS, OTTREF16
 SET MAG/WASHER
 7/10/13, SDC
 GPS, FINREFOTT15
 7/11/13, SDC



O.D.O.T. DISTRICT 2 SURVEY OFFICE

PERSONNEL

REFERENCE NO. 15

SHEET 12 OF 26

NOTES BARNHISEL

H.C. CORDS

R.C. SLOVAK

DATE 9-28-94

WEATHER SUNNY - WINDY

TEMP. +55°

ROUTE 105

COUNTY OTTAWA

TOWNSHIP HARRIS

SECTION 23

T6 N R 13 E

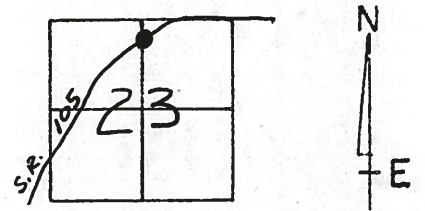
TYPE MONUMENT Sm. RR SPK

~~ON SURFACE~~ - BELOW 5"

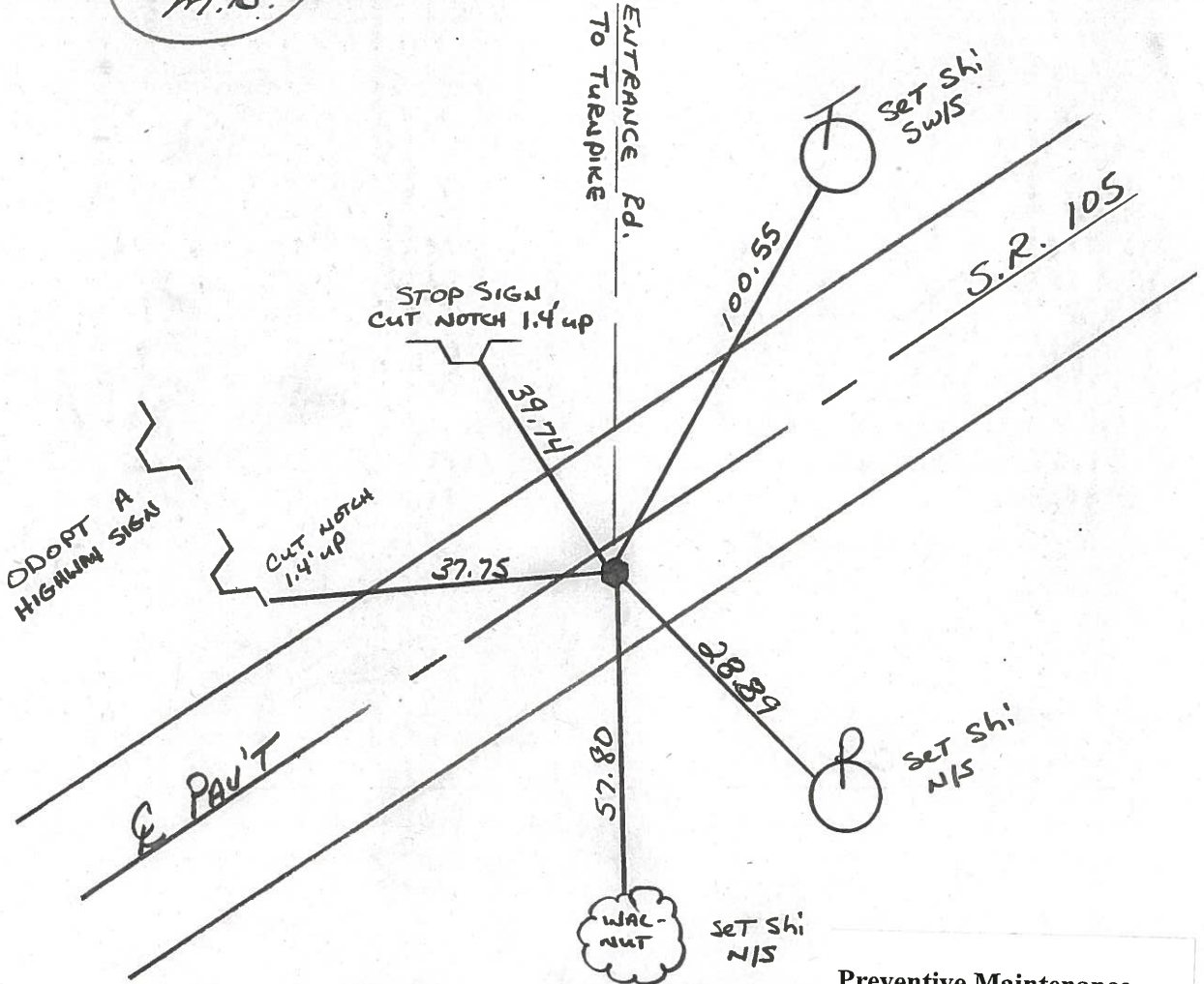
~~SET~~ - C. PAV'T. - RIGHT 2.0

S.I. TO RT. EDGE PAVEMENT

S.L.M. 45 + 12



*Reset P.K. & WASHER
9-28-94
M.B.*



Preventive Maintenance
Microsurfaced 2000
Existing Point Uncovered
Date 5-8-2000

PERSONNEL TITLE PERSONNEL TITLE

COUNTY O'Hawa

DATE 8-5-74

S. R. 105

WEATHER Fair

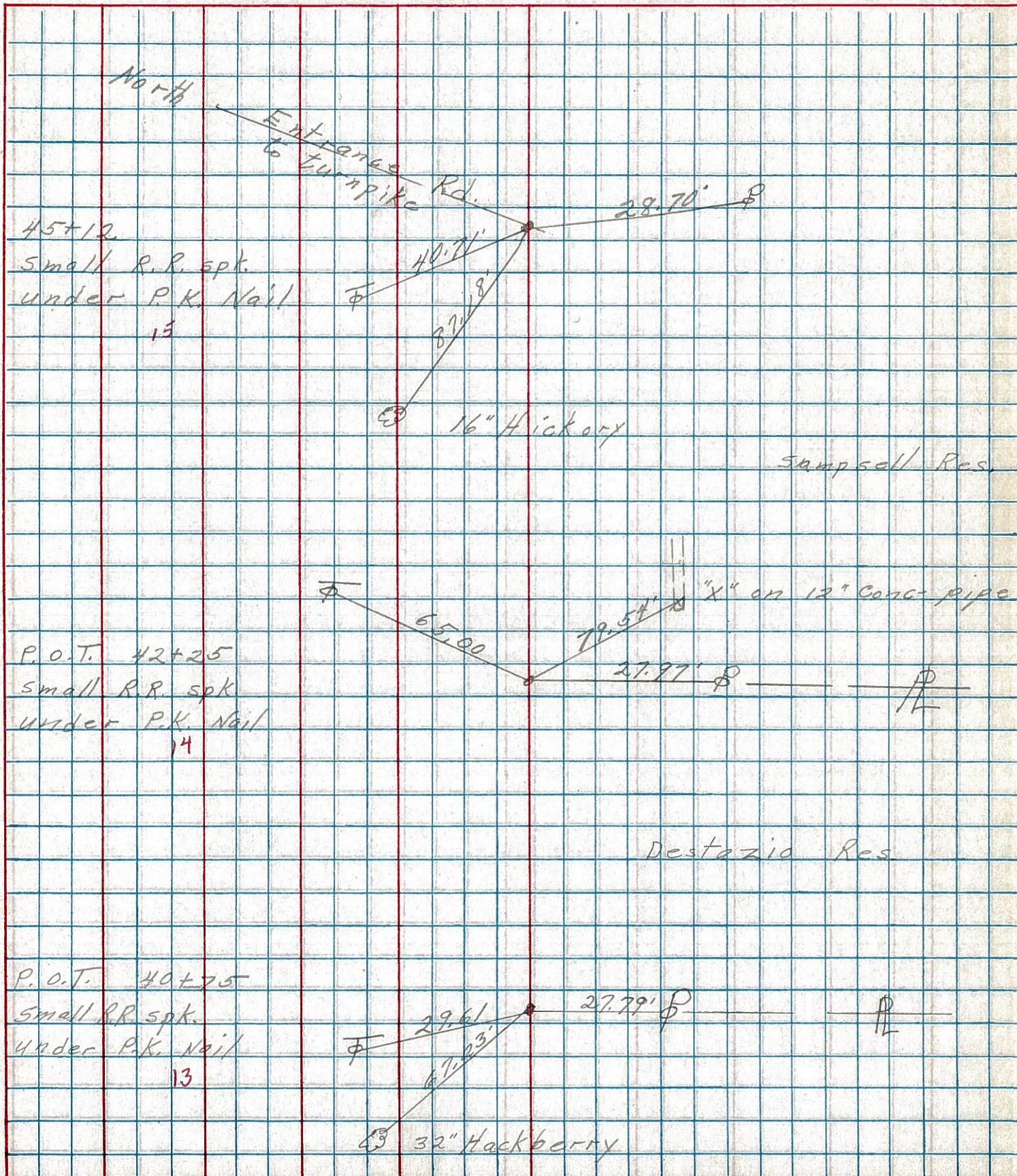
SEC. 14 23

TEMP. 75°

DESCRIPTION Harris Twp

JOB NO.

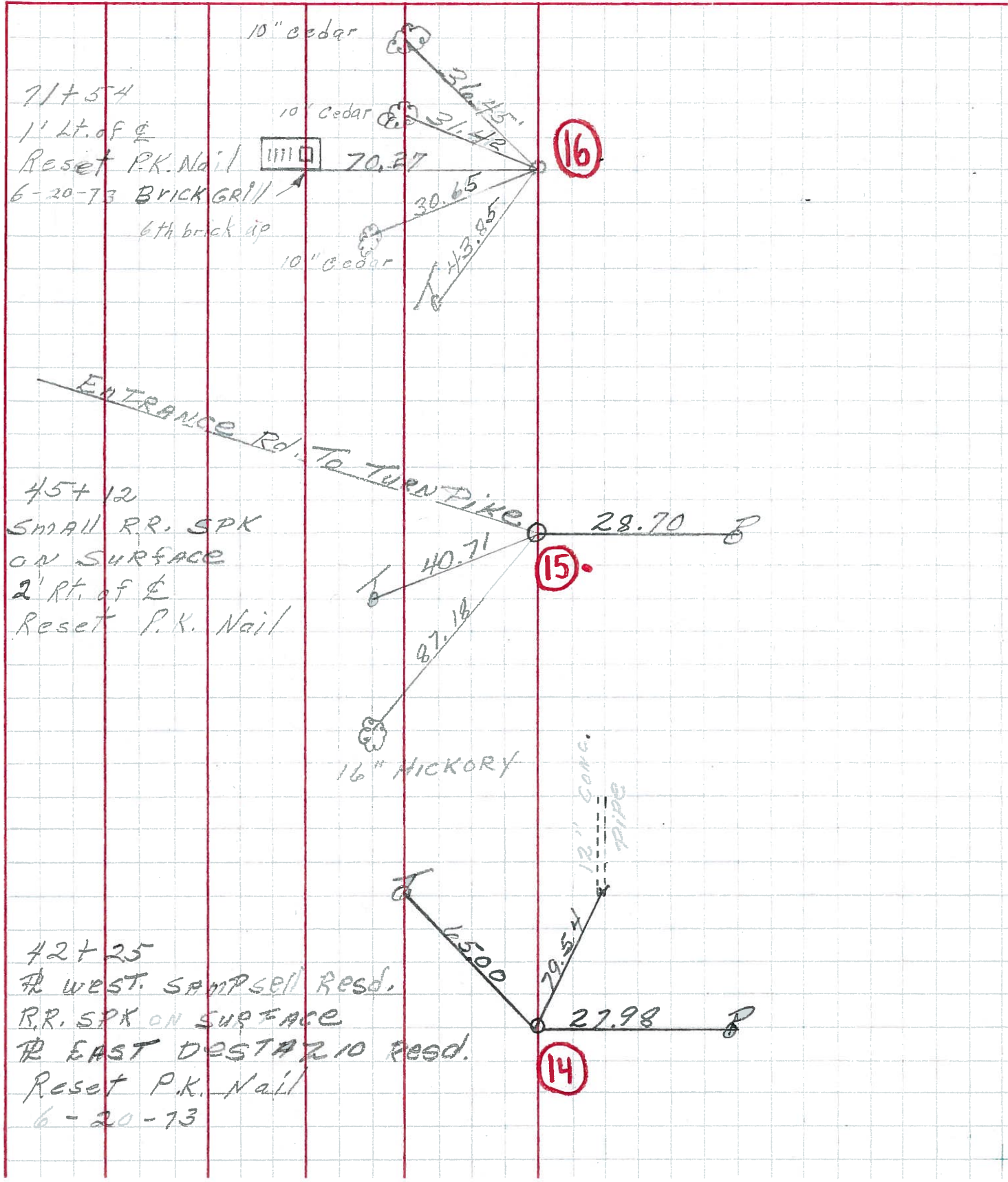
LEFT CENTER LINE RIGHT



PERSONNEL	TITLE	PERSONNEL	TITLE
MOSSER			
BARBOUR			
GEYMAN			
VINSON			

COUNTY OTT. DATE 8-18-71
 S. R. 105 WEATHER SUNNY
 SEC. OTT. CO. LINE TO HARBOUR TEMP. 65°

DESCRIPTION TIES FOR CONTROL TIES JOB NO. _____



PERSONNEL	TITLE	PERSONNEL	TITLE	COUNTY	Ottawa	DATE	6-29-6
Schneider				S. R.	105	WEATHER	Cloudy
Barbour				SEC.	Oak Harbor San. Co. Line G	TEMP.	75°
Redding							

DESCRIPTION Ties for Control Points JOB NO. _____

