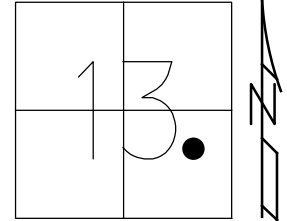


O.D.O.T. DISTRICT 2 SURVEY OFFICE (USE ONLY)

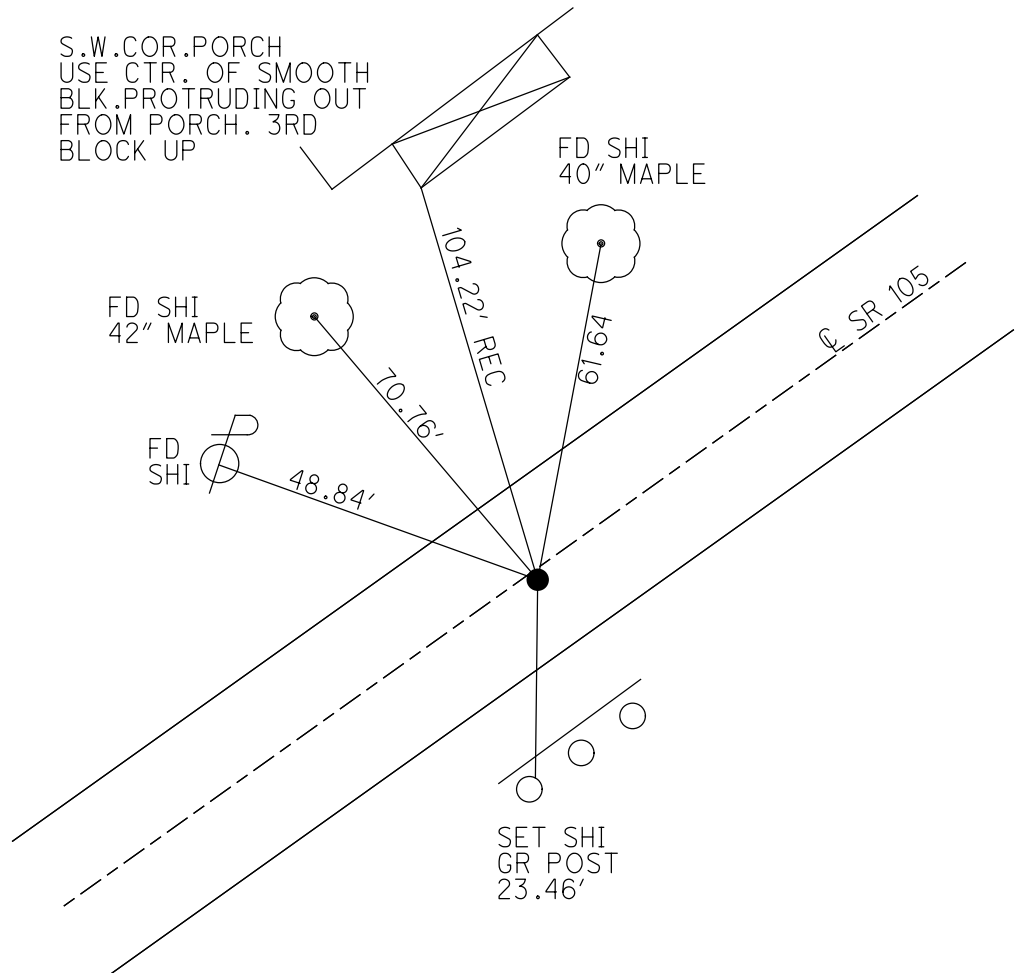
PERSONNEL _____ REFERENCE NO. 25 SHEET 28 OF 33
 NOTES RHOADES DATE 7/21/21 ROUTE SR 105
 H.C. O'DONNELL WEATHER CLOUDY COUNTY OTTAWA
 R.C. RHOADES TEMP. 65° TOWNSHIP HARRIS
 DWG BY RHOADES PID CHIP SEAL SECTION 13
 T 6 N R 13 E

TYPE MONUMENT MAG/WASHER
 ON SURFACE - ~~BELOW~~ ON _____
 OFFSET ☉ PAVEMENT 0.4' ~~±~~ : RT
8.5' TO LT EDGE PAVEMENT
 STATION: 120+15



HORIZ.DATUM: NAD83 2011 GEOID: NAVD88 2018
 GRID: NORTHING: 660230.799 EASTING: 1748260.153

RECORD: P.I.
 $\Delta = 1^{\circ}37' 40''$ RT
 SET P.K./WASHER
 10/12/94, MB
 FD P.K./WASHER
 OTTREF27
 5/7/13, DCH
 SET MAG/WASHER
 FINREFOTT25
 7/11/13, SDC
 FD MAG/WASHER
 REF25
 7/21/21, JFO
 10/20/21, JMR

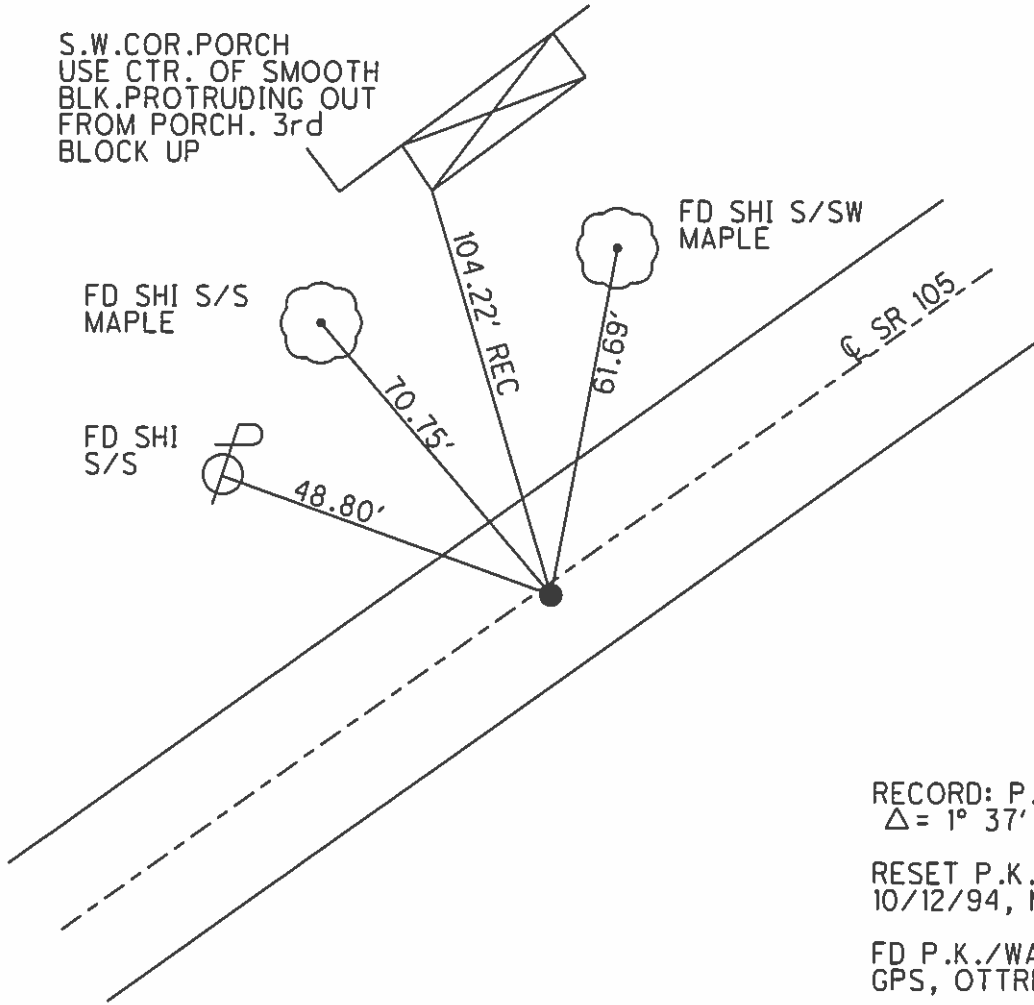
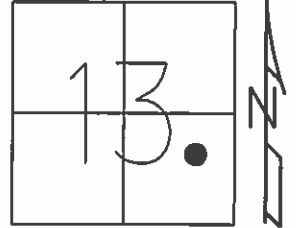


O.D.O.T. DISTRICT 2 SURVEY OFFICE (USE ONLY)

PERSONNEL	REFERENCE NO. <u>25</u>	SHEET <u>28</u> OF <u>33</u>
NOTES <u>HOMAN</u>	DATE <u>5/7/13</u>	ROUTE <u>SR 105</u>
H.C. <u>HOMAN</u>	WEATHER <u>CLEAR</u>	COUNTY <u>OTTAWA</u>
R.C. <u>ROUSOS</u>	TEMP. <u>70°</u>	TOWNSHIP <u>HARRIS</u>
		SECTION <u>13</u>
		T <u>6</u> N R <u>13</u> E

TYPE MONUMENT P.K./WASHER
 ON SURFACE - ~~BELOW~~ ON
~~LEFT~~ - C PAV'T - RIGHT 0.4'
8.5' TO LT EDGE PAVEMENT
 S.L.M. 120+15

Grid: Northing: 660230.839 Easting: 1748260.07



RECORD: P.I.
 $\Delta = 1^{\circ} 37' 40''$ RT

RESET P.K./WASHER
 10/12/94, MB

FD P.K./WASHER
 GPS, OTTREF27

SET MAG/WASHER
 7/10/13, SDC
 GPS, FINREFOTT25
 7/11/13, SDC

O.D.O.T. DISTRICT 2 SURVEY OFFICE

PERSONNEL _____

REFERENCE NO. 25

SHEET 23 OF 26

NOTES BARNHISEL

H.C. CORDES

R.C. SLOVAK

DATE 9-15-94

WEATHER SUNNY

TEMP. +81°

ROUTE 105

COUNTY OTTAWA

TOWNSHIP HARRIS

SECTION 13

T 6 N R 13 E

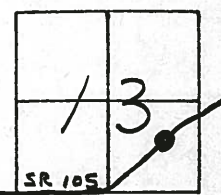
TYPE MONUMENT P.K. & WASHER

ON SURFACE - ~~BELOW~~ yes

~~SET~~ - C. PAV'T. - RIGHT 0.4

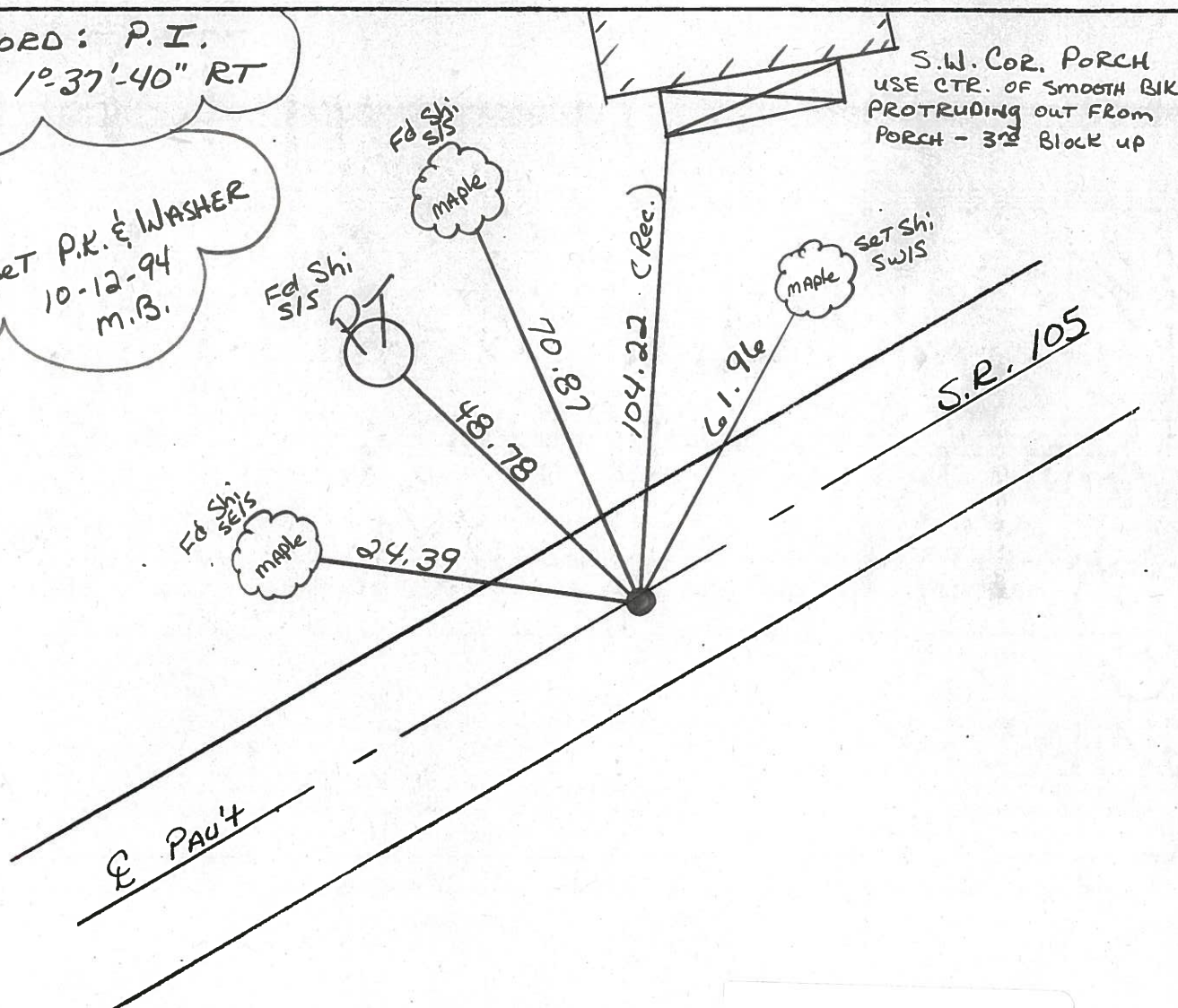
8.5 TO LT EDGE PAVEMENT

S.L.M. 120+15



Record: P.I.
 $\Delta = 1^{\circ}37'40''$ RT

Reset P.K. & WASHER
 10-12-94
 m.B.



Preventive Maintenance
 Microsurfaced 2000
 Existing Point Uncovered
 Date 5-8-2000

O.D.O.T. DISTRICT 2 SURVEY OFFICE

PERSONNEL _____

REFERENCE NO. 25

SHEET 10 OF 27

NOTES HOFFMAN

H.C. "

DATE 2-20-86

ROUTE SR 105

R.C. LOENRICE

WEATHER OVERCAST

COUNTY OTTAWA

TEMP. 35°

TOWNSHIP HARRIS

SECTION 13

T 6 N R 13 E

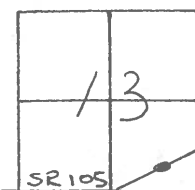
TYPE MONUMENT P.K./WASHER

ON SURFACE - ~~BELOW~~ Yes

~~LEFT - 0.4'~~ RIGHT 0.4'

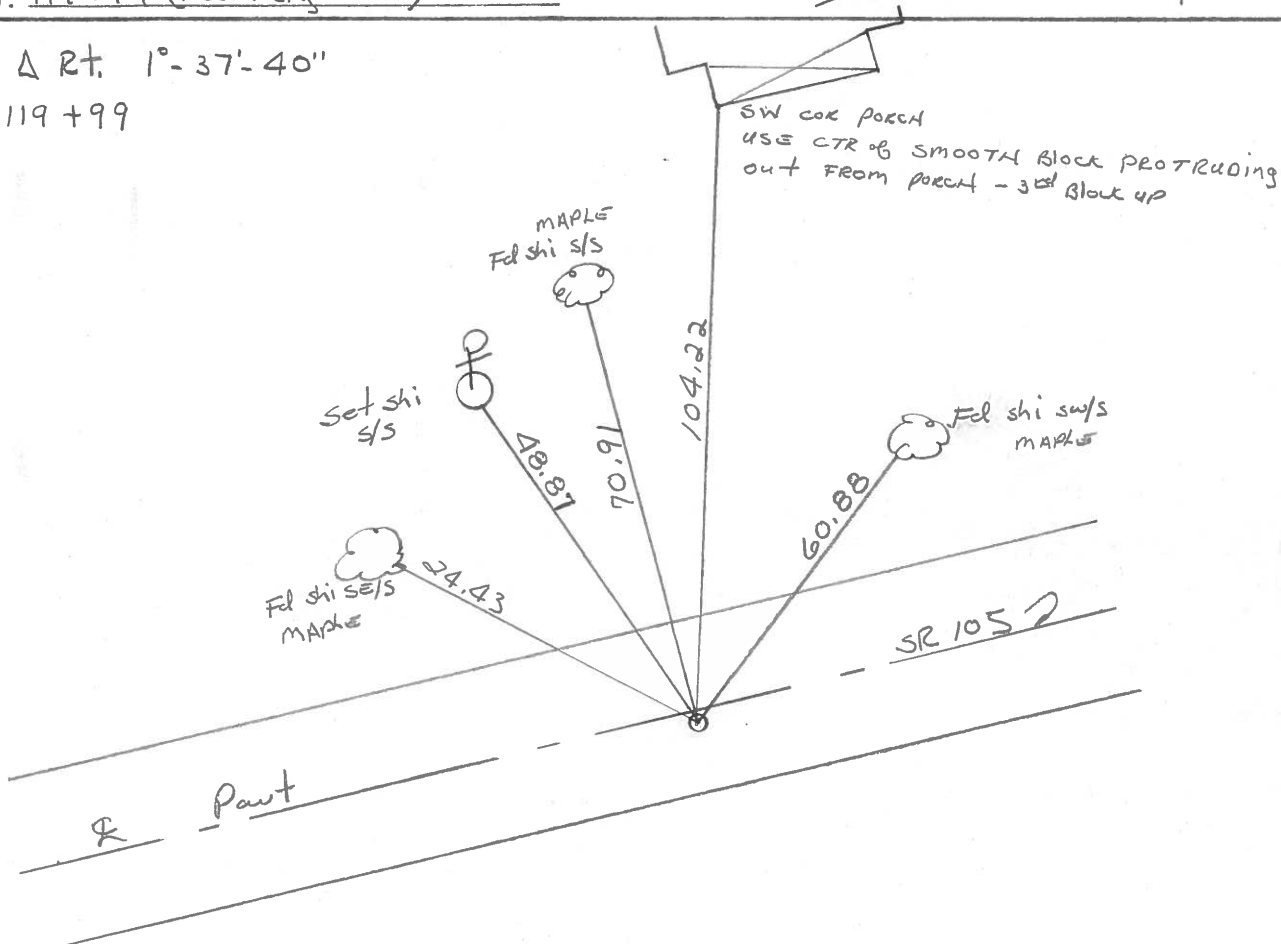
B.S. TO Lt. EDGE PAVEMENT

S.L.M. 119+99 (Resurfacing Sta.)



P.I. Δ Rt. 1°-37'-40"

STA. 119+99



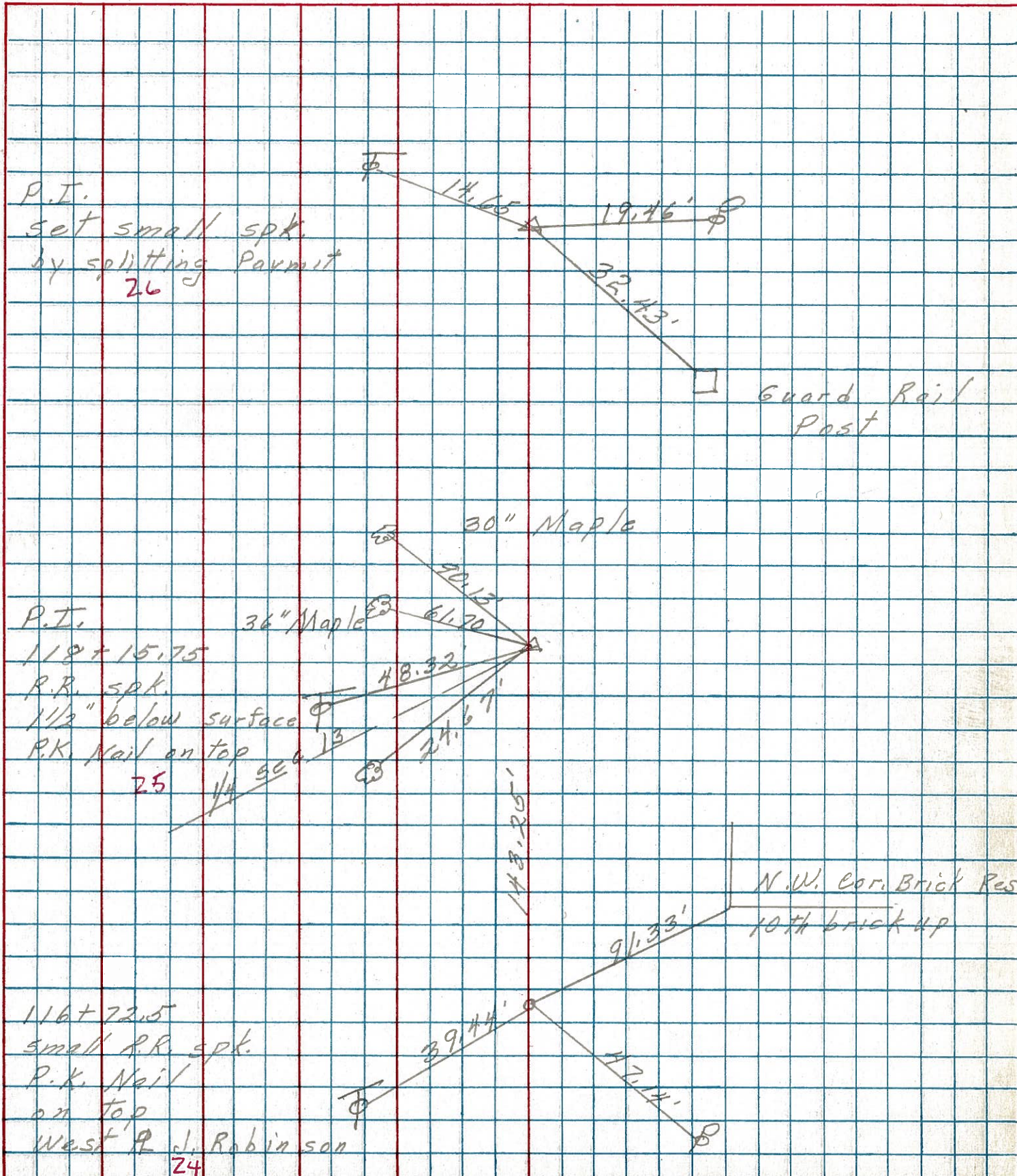
PERSONNEL TITLE PERSONNEL TITLE

COUNTY Ottawa DATE 8-8-74

S. R. 105 WEATHER cloudy

SEC. 13 TEMP. 85°

DESCRIPTION Harris Twp. JOB NO.



PERSONNEL	TITLE	PERSONNEL	TITLE

COUNTY O HAWAII
 S. R. 105
 SEC. OT. CO LINE TO HARBOR
 WEATHER SUNNY
 TEMP. 70°

DESCRIPTION	LEFT	CENTER LINE	RIGHT	JOB NO.
			S.R. # 51	
131+80 R.R. spk. North of Perm Central tracks 2.2' Lt. of ϕ Reset P.K. Nail			Brace Pole ϕ 26.70 27.09' 61.61 R.R. signal center of N.W. bolt.	
119+94.6 Large R.R. spk. 1/2" below sur Reset P.K. Nail			30" Maple 90.131 61.70 36" Maple 48.32' 24.67' 42" Maple	
118+50.5 SMALL R.R. SPK ON SURFACE Reset P.K. Nail			29.17 29.45' 14.37' 3rd GUARD RAIL POST FACE 2" IRON PIPE 1" ABOVE GROUND	