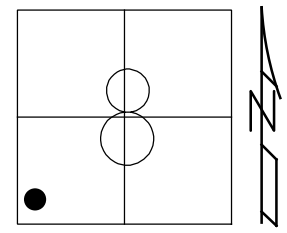


O.D.O.T. DISTRICT 2 SURVEY OFFICE (USE ONLY)

PERSONNEL	REFERENCE NO. <u>40</u>	SHEET <u>12</u> OF <u>63</u>
NOTES <u>RHOADES</u>	DATE <u>7/29/19</u>	ROUTE <u>SR 105</u>
H.C. <u>O'DONNELL</u>	WEATHER <u>SUNNY</u>	COUNTY <u>OTTAWA</u>
R.C. <u>MILLER</u>	TEMP. <u>83°</u>	TOWNSHIP <u>HARRIS</u>
		SECTION <u>8</u>
DWG BY <u>BALBAUGH</u>	PID <u>92131</u>	T <u>6</u> N R <u>14</u> E

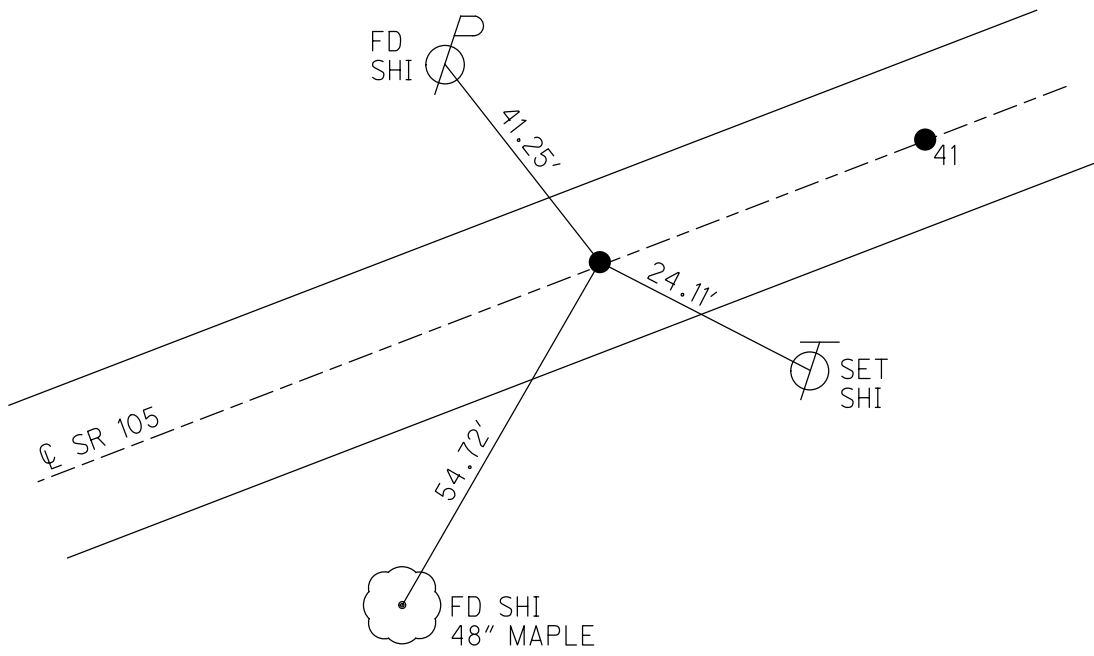
TYPE MONUMENT P.K./WASHER
 ON SURFACE - ~~BELOW~~ ON
 OFFSET ☐ PAVEMENT 0.6' LT : ~~RT~~
9.7' TO LT EDGE PAVEMENT
 STATION: 210+05.00



HORIZ.DATUM: NAD83 2011 GEOID: 2012A
 GRID: NORTHING: 665274.967 EASTING: 1755640.934

RECORD:
 FD P.K./WASHER
 4/3/00, MC
 SET P.K./WASHER
 6/21/00, KPM
 FD P.K.NAIL
 REF40
 4/18/18, JFO
 FD P.K./WASHER
 7/29/19, JFO
 SET MAG/WASHER
 11/18/19, JFO

DIST.
 40-41= 57.97'



O.D.O.T. DISTRICT 2 SURVEY OFFICE

PERSONNEL

REFERENCE NO. 39, 40, 41

SHEET 11 OF 96

NOTES K. Moser

H.C. M. CANTERBURY

DATE 4-3-00

ROUTE S.R. 105

R.C. M. BARNHISEL

WEATHER Sunny

COUNTY OTTAWA

TEMP. +50°F

TOWNSHIP HARRIS

SECTION 8

T6 N R 14 E

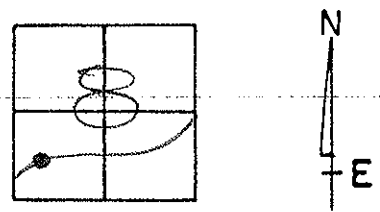
TYPE MONUMENT PK / WASHER

ON SURFACE - ~~BELOW~~ ON SURFACE

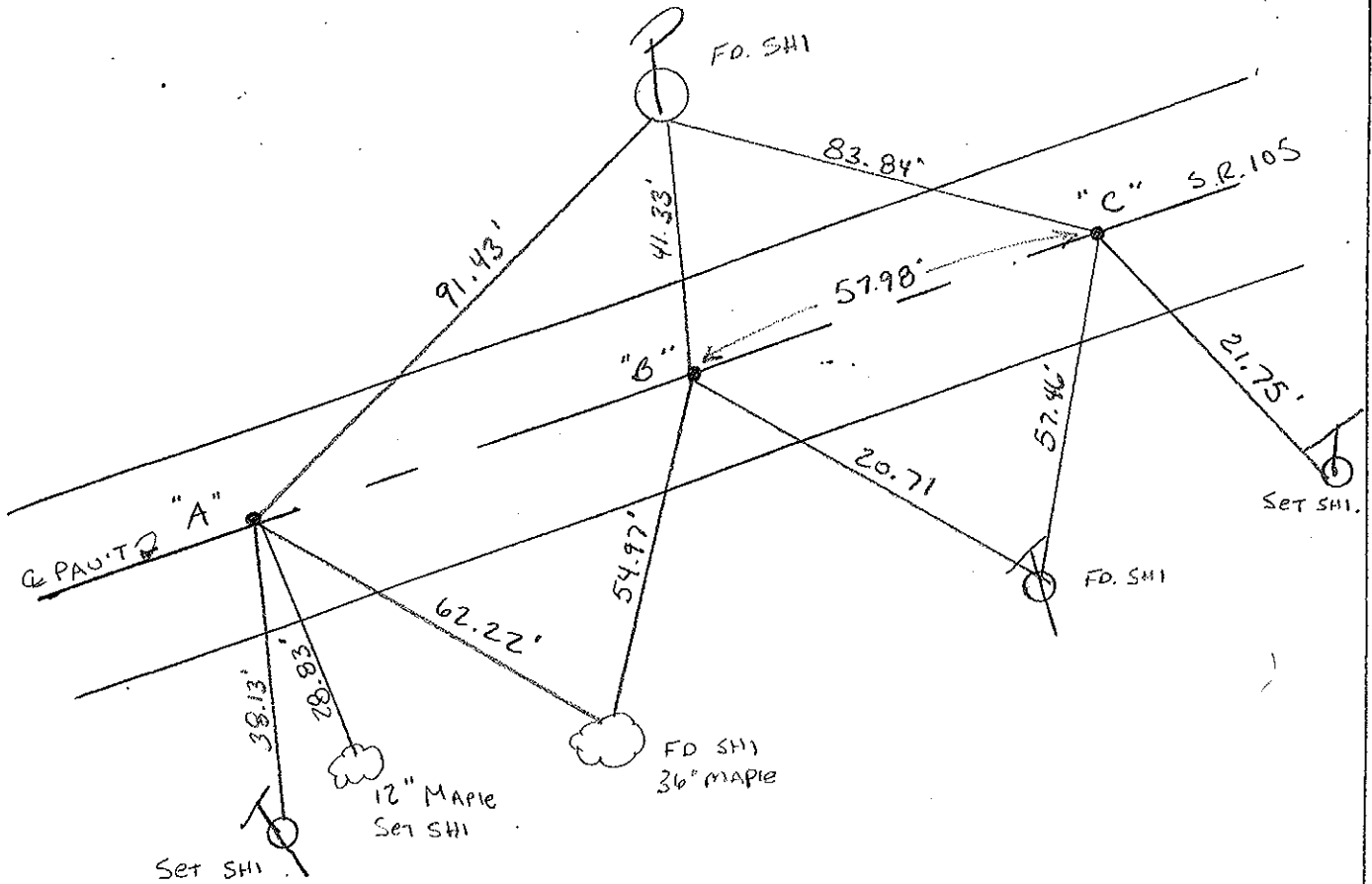
LEFT - ~~C PAV'T~~ RIGHT A-1.5' LT' B-0.6' LT' C-0.3' LT'

TO LT. EDGE PAVEMENT A-9.2' B-9.7' C-10.0'

S.L.M. A-209+62 B-210+62 C-211+20



RESEST PK / WASHERS
6-21-00
KPM



PERSONNEL TITLE PERSONNEL TITLE

COUNTY Ottawa DATE 1-24-7

S. R. 105 WEATHER Fair

SEC. SW 1/4 sec 8 TEMP. 40°

DESCRIPTION Harris Twp. JOB NO.

