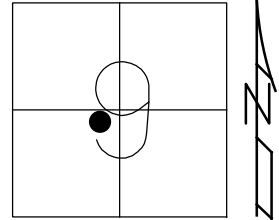


O.D.O.T. DISTRICT 2 SURVEY OFFICE (USE ONLY)

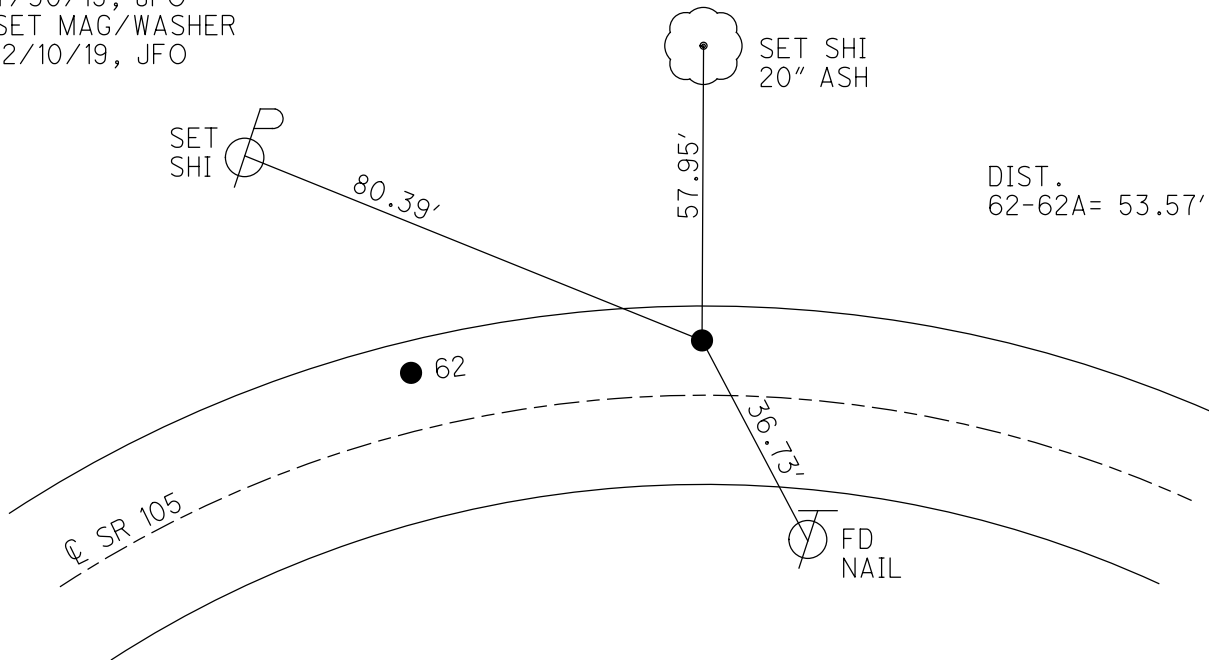
PERSONNEL _____ REFERENCE NO. 62 A SHEET 44 OF 63
 NOTES RHOADES DATE 7/30/19 ROUTE SR 105
 H.C. O'DONNELL WEATHER PARTLY CLOUDY COUNTY OTTAWA
 R.C. MILLER TEMP. 80° TOWNSHIP HARRIS
 DWG BY BALBAUGH PID 92131 SECTION 9
 T 6 N R 14 E

TYPE MONUMENT P.K./WASHER
 ON SURFACE - ~~BELOW~~ ON
 OFFSET ☉ PAVEMENT 5.7' LT : RT
4.6' TO LT EDGE PAVEMENT
 STATION: 278+88.27



HORZ. DATUM: NAD83 2011 GEOID: 2012A
 GRID: NORTHING: 666651.840 EASTING: 1762133.142

RECORD:
 P.K.&R.R.SPIKE
 BELOW P.K./WASHER
 1987
 FD P.K./WASHER
 4/18/00, MC
 SET P.K./WASHER
 6/22/00, KPM
 FD P.K./WASHER
 REFA62
 4/27/18, JFO
 FD P.K./WASHER
 7/30/19, JFO
 SET MAG/WASHER
 12/10/19, JFO



O.D.O.T. DISTRICT 2 SURVEY OFFICE

PERSONNEL

NOTES K. MOSER

H.C. M. CANTERBURY

R.C. M. BARNHISEL

REFERENCE NO. 62A
(# 62 - D.N.F.)

DATE 4-18-00

WEATHER CLOUDY

TEMP. +55°F

SHEET 35 OF 96

ROUTE S.R. 105

COUNTY OTTAWA

TOWNSHIP HARRIS

SECTION 9

T6 N R 14 E

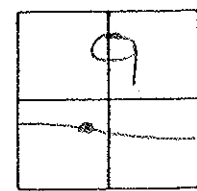
TYPE MONUMENT PK/WASHER

ON SURFACE - ~~BELOW~~ SURFACE

LEFT - ~~C PAV'T.~~ RIGHT 5.7' LT.

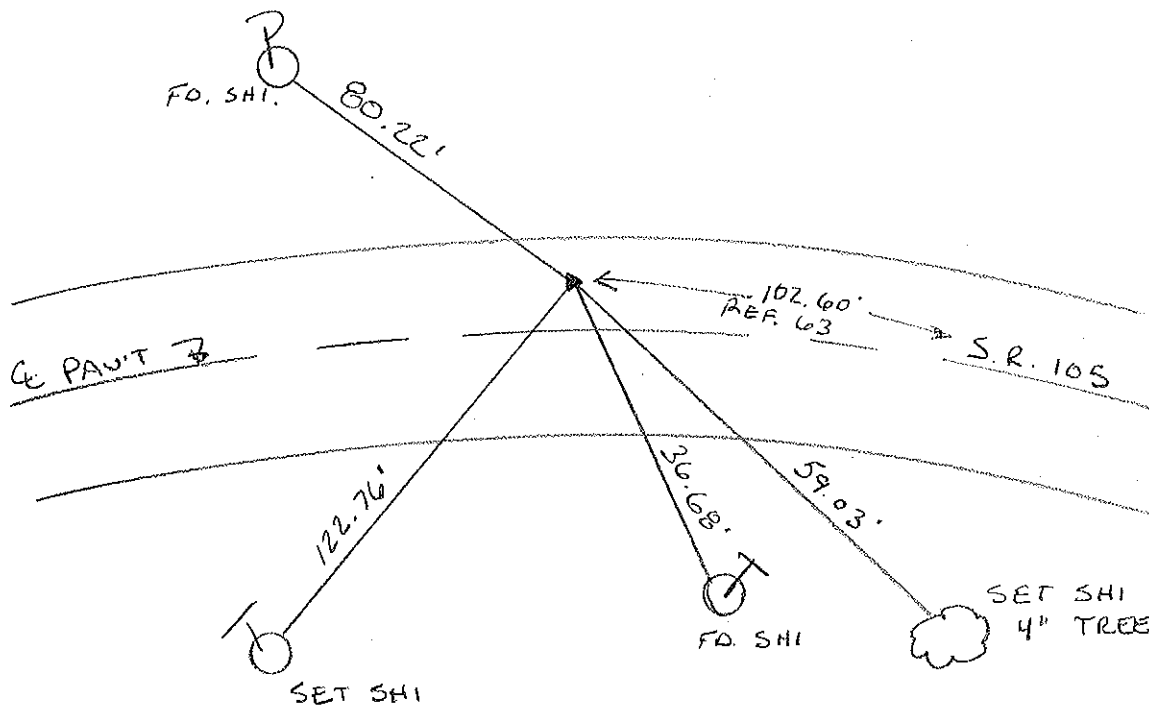
4.6 TO LT. EDGE PAVEMENT

S.L.M. 279 + 55



RECORD: PK & IR SPIKE
Below PK & WASHER
1987

RESET PK/WASHER
6-22-00
K.P.M.



O.D.O.T. DISTRICT 2 SURVEY OFFICE

PERSONNEL _____ REFERENCE NO. 62 A SHEET _____ OF _____

NOTES Cronin DRAWN 5/25/88

H.C. Ripple DATE 5/26/87

R.C. Barbour WEATHER sunny

Geyman TEMP. 80°

ROUTE #105

COUNTY Ottawa

TOWNSHIP Harris

SECTION 9

TOWN R1E

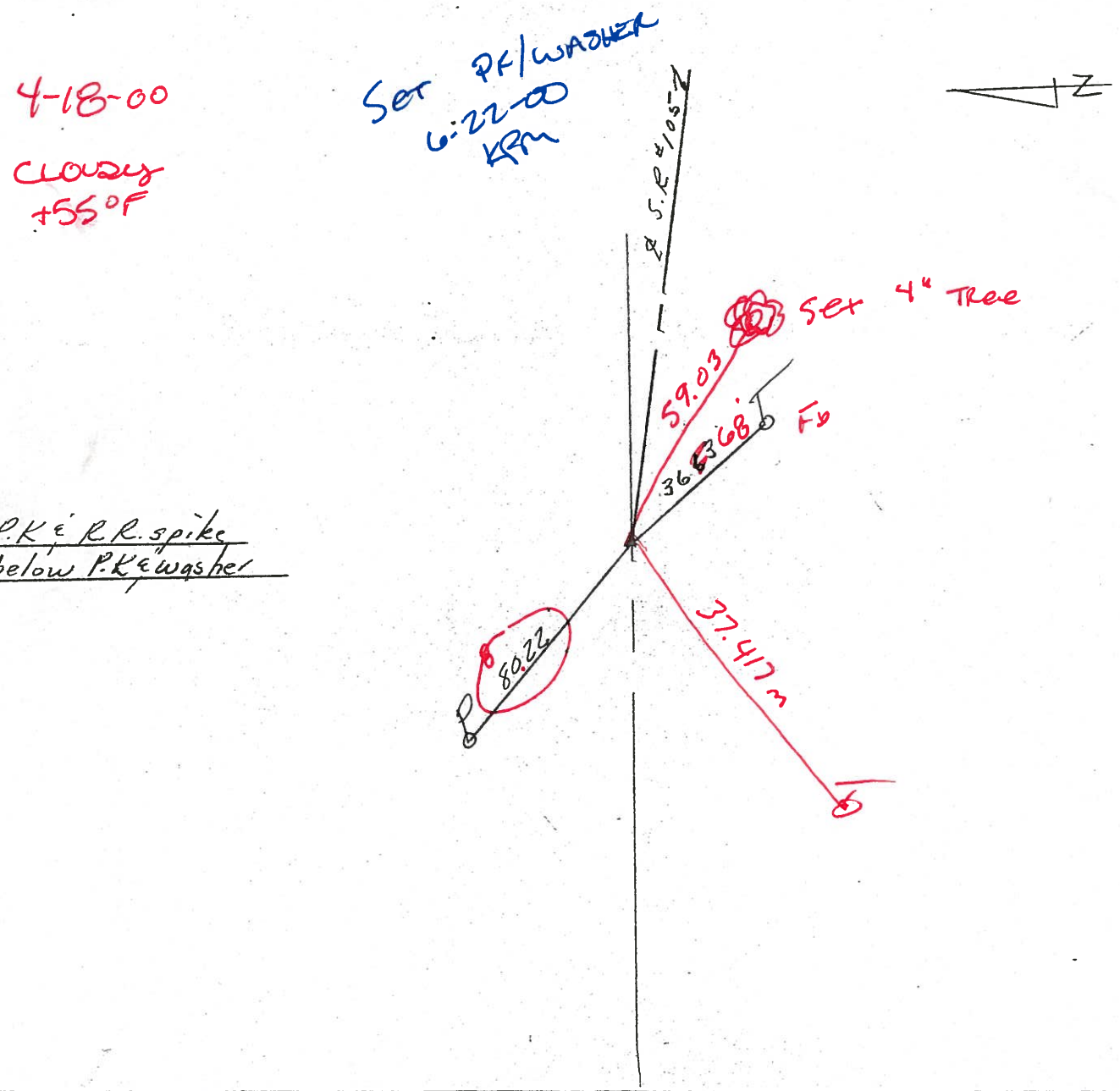
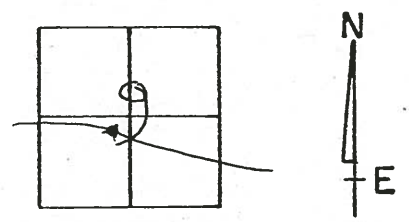
TYPE MONUMENT P.K. & washer Fb

ON SURFACE - BELOW _____

LEFT - ~~C PAV'T~~ - RIGHT 5.2 5.7'

4.6 TO LT EDGE PAVEMENT

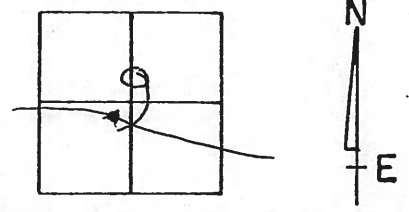
S.L.M. 279 + ~~14~~ 55



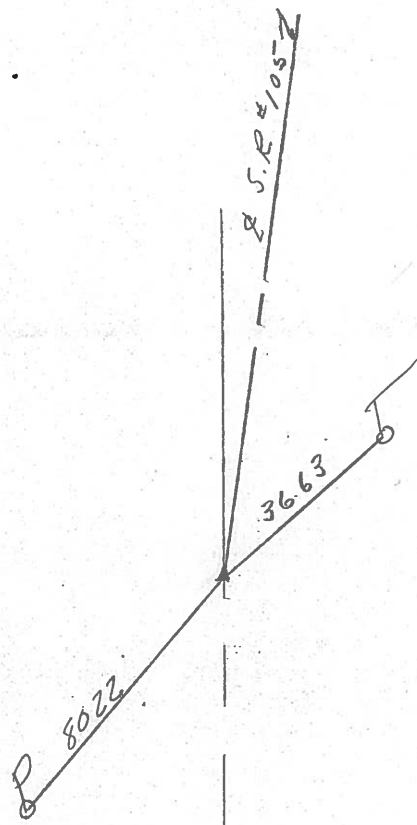
O.D.O.T. DISTRICT 2 SURVEY OFFICE

PERSONNEL _____ REFERENCE NO. 62 A SHEET _____ OF _____
 NOTES Cranin DRAWN 5/25/88
 H.C. Ripple DATE 5/26/87 ROUTE #105
 R.C. Barbour WEATHER sunny COUNTY Ottawa
Geyman TEMP. 80° TOWNSHIP Harris
 SECTION 9
 TOWN R 14 E

TYPE MONUMENT P.K. washer
 ON SURFACE - BELOW _____
 LEFT - € PAV'T. - RIGHT 5 1/2
 TO _____ EDGE PAVEMENT
 S.L.M. 279 + 11 ±



P.K. & R.R. spike
below P.K. washer



PERSONNEL TITLE PERSONNEL TITLE

Schneider

COUNTY Ottawa

DATE 3-7-74

Mosser

S. R. 105

WEATHER cloudy

Barbour

SEC. 9

TEMP. 60°

DESCRIPTION Harris Twp

JOB NO.

LEFT

CENTER LINE

RIGHT

