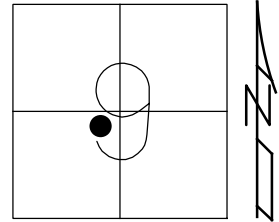


O.D.O.T. DISTRICT 2 SURVEY OFFICE (USE ONLY)

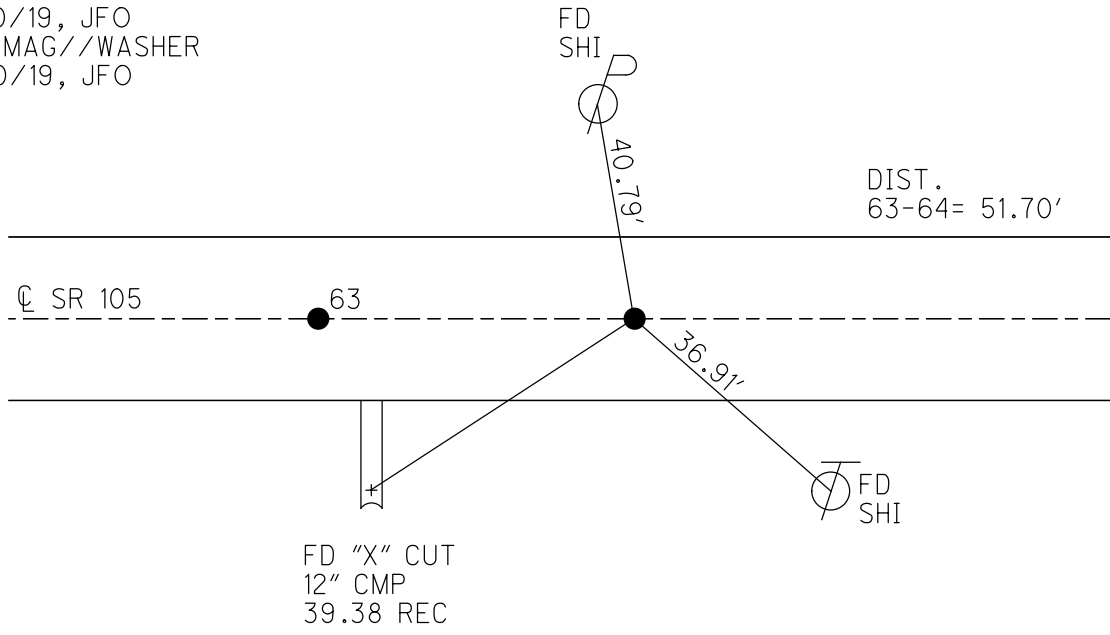
PERSONNEL _____ REFERENCE NO. 64 SHEET 46 OF 63
 NOTES RHOADES DATE 7/30/19 ROUTE SR 105
 H.C. O'DONNELL WEATHER PARTLY CLOUDY COUNTY OTTAWA
 R.C. MILLER TEMP. 80° TOWNSHIP HARRIS
 _____ SECTION 9
 DWG BY BALBAUGH PID 92131 T 6 N R 14 E

TYPE MONUMENT P.K./WASHER
 ON SURFACE - ~~BELOW~~ ON
 OFFSET Q PAVEMENT ON ~~LT~~ : ~~RT~~
10.2' TO RT EDGE PAVEMENT
 STATION: 280+42.37



HORIZ.DATUM: NAD83 2011 GEOID: 2012A
 GRID: NORTHING: 666605.796 EASTING: 1762280.350

RECORD: R.R.SPIKE
 BELOW P.K./WASHER
 1987
 FD P.K./WASHER
 4/18/00, MC
 SET P.K./WASHER
 6/22/00, KPM
 FD P.K./WASHER
 REF64
 4/30/18, JFO
 FD P.K./WASHER
 7/30/19, JFO
 SET MAG//WASHER
 12/10/19, JFO



DIST.
 63-64= 51.70'

FD "X" CUT
 12" CMP
 39.38 REC

O.D.O.T. DISTRICT 2 SURVEY OFFICE

PERSONNEL

REFERENCE NO. 64

SHEET 37 OF 96

NOTES K. MOSER

H.C. M. CANTERBURY

DATE 4-18-00

ROUTE S.R. 105

R.C. M. BARNHISEL

WEATHER CLOUDY

COUNTY OTTAWA

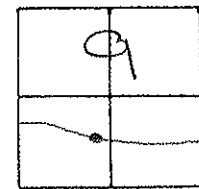
TEMP. +55 °F

TOWNSHIP HARRIS

SECTION 9

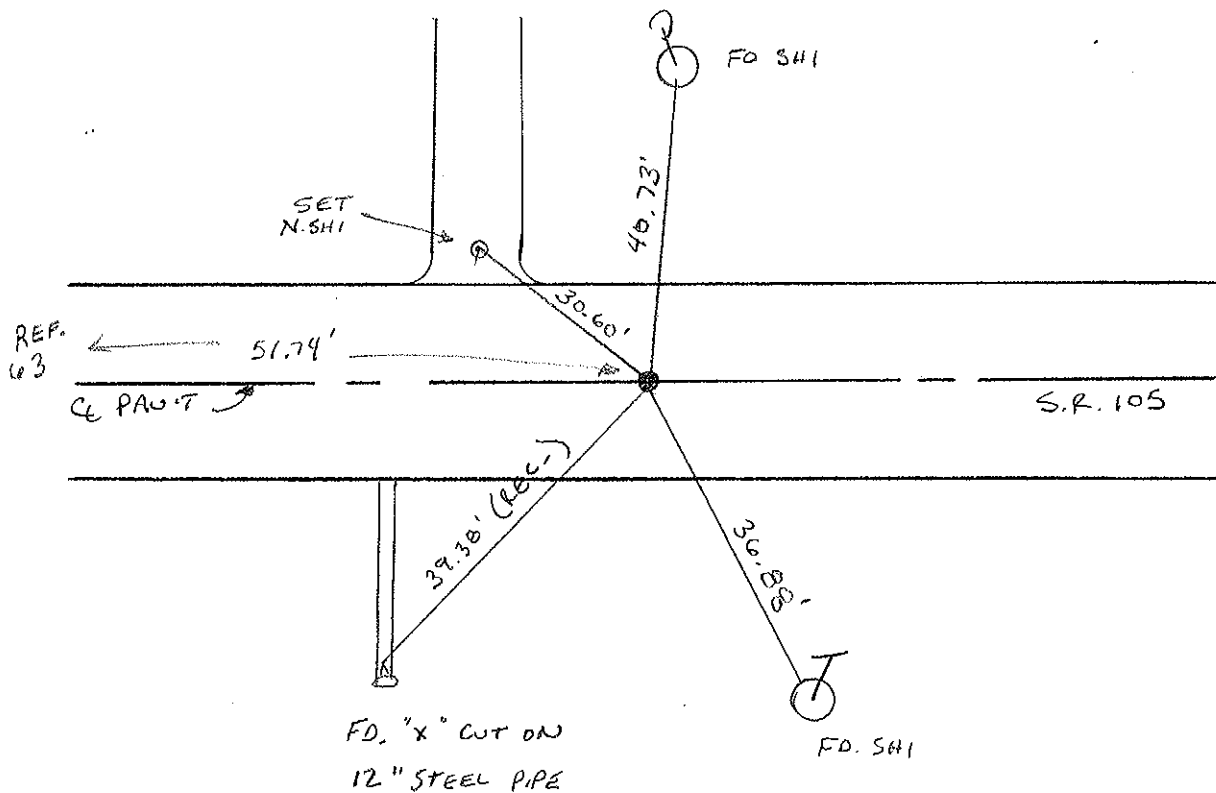
T6 N R 14 E

TYPE MONUMENT PK WASHER
 ON SURFACE - BELOW SURFACE
 LEFT - Q PAV'T. - RIGHT Q
10.2 TO RT. EDGE PAVEMENT
 S.L.M. 280 + 09



RECORD: R.R. SPIKE
 Below PK/WASHER
 1987

RESET PK/WASHER
 6-22-00
 K.P.M



O.D.O.T. DISTRICT 2 SURVEY OFFICE

PERSONNEL

REFERENCE NO. 64

SHEET OF

NOTES Cranin

DRAWN 5/25/88

H.C. Ripple

DATE 5/26/87

ROUTE #105

R.C. Barbour

WEATHER sunny

COUNTY Ottawa

Geyman

TEMP. 80°

TOWNSHIP Harris

SECTION 9

T 6 N R 14 E

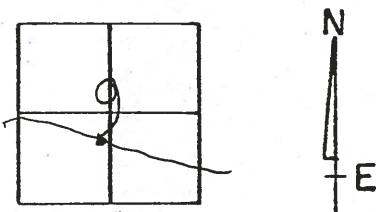
TYPE MONUMENT P.K. & washer

ON SURFACE - BELOW

~~LEFT - & PAV'T. - RIGHT~~

10.2 TO CT EDGE PAVEMENT

S.L.M. 280+65.30 PI



280 + 09

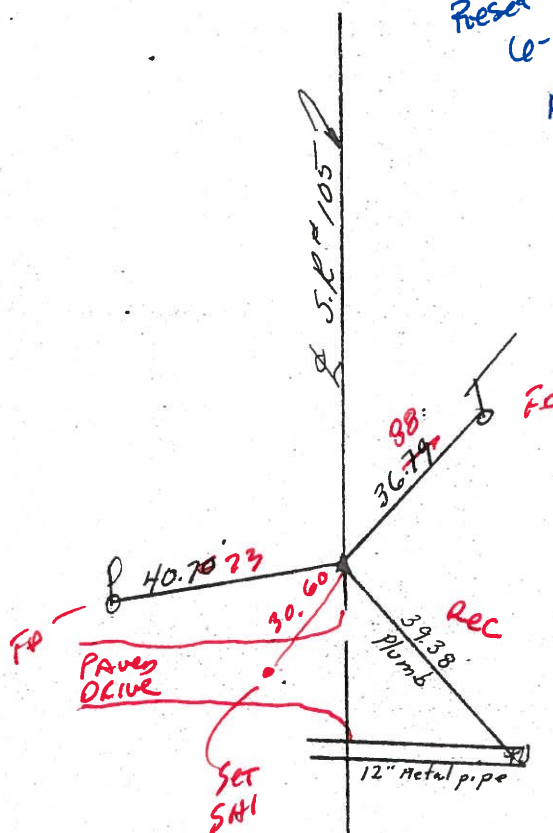
4-18-00

Cloudy
+55°F

Reset PK/WASHER
6-22-00
KPM



R.R. spike
below P.K. & washer



O.D.O.T. DISTRICT 2 SURVEY OFFICE

PERSONNEL

REFERENCE NO. 64

SHEET OF

NOTES Cronin

DRAWN 5/25/88

H.C. Ripple

DATE 5/26/87

ROUTE #105

R.C. Barbour

WEATHER sunny

COUNTY Ottawa

Geyman

TEMP. 80°

TOWNSHIP Harris

SECTION 9

T 6 N R 14 E

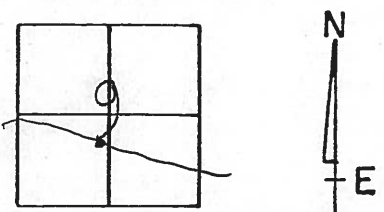
TYPE MONUMENT P.K. & washer

ON SURFACE - BELOW

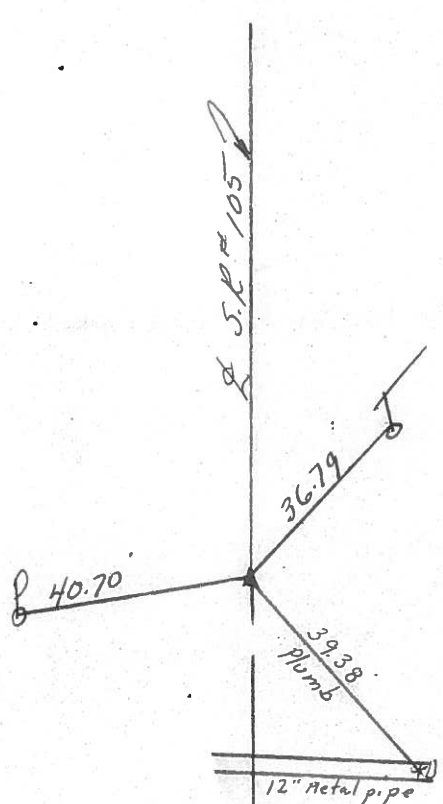
LEFT - PAV'T. - RIGHT

 TO EDGE PAVEMENT

S.L.M. 280+65.30 P.I.



R.R. spike
below P.K. & washer



PERSONNEL TITLE PERSONNEL TITLE

COUNTY Ottawa

DATE 3-13-74

S. R. 105

WEATHER Co ld-windy

SEC. 9

TEMP. 25°

DESCRIPTION Harris Twp.

JOB NO.

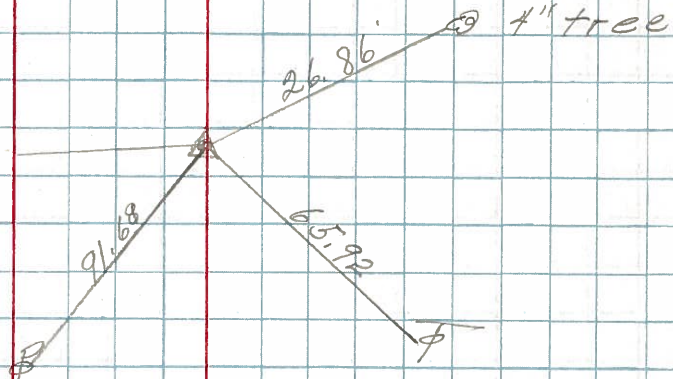
LEFT

CENTER LINE

RIGHT

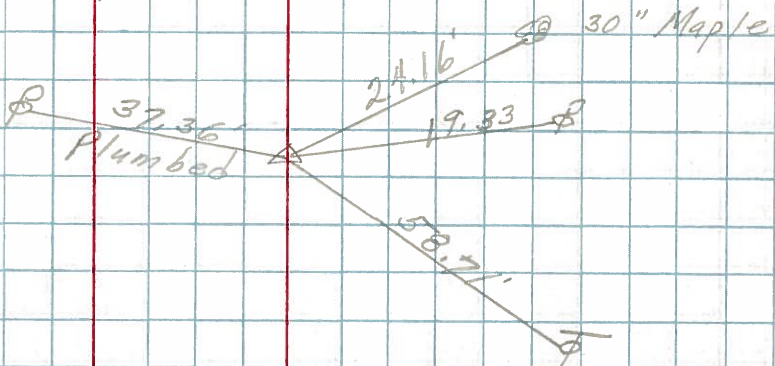
P.I.
299+56.5
Fd. R.R. spk.

66



P.I.
290+40
Set P.K. Nail

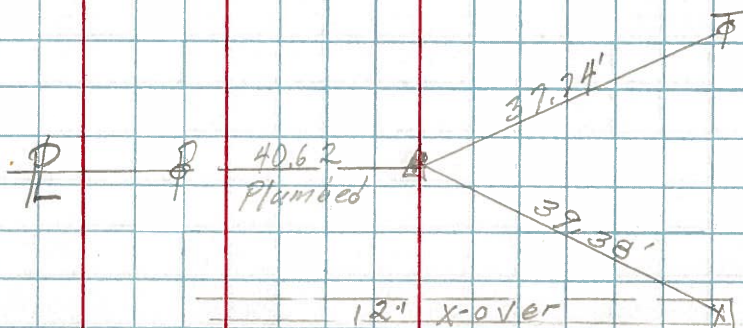
65



Co. Rd. #61
Med. Road North

P.I.
Fd. Spk. on top
280+65.93

64



PERSONNEL TITLE PERSONNEL TITLE COUNTY Ottawa DATE 7-8-68
Schneider Potts
Mosser S. R. 105 WEATHER Fair
Barbour
Reading SEC. San. Co. Line & Oak Harbor TEMP. 80°
 DESCRIPTION Ties for Control Points JOB NO.

