

O.D.O.T. DISTRICT 2 SURVEY OFFICE (USE ONLY)

PERSONNEL

REFERENCE NO. 75

SHEET 57 OF 63

NOTES RHOADES

DATE 7/31/19

ROUTE SR 105

H.C. O'DONNELL

WEATHER CLOUDY

COUNTY OTTAWA

R.C. MILLER

TEMP. 72°

TOWNSHIP HARRIS

SECTION 10

DWG BY BALBAUGH PID 92131

T 6 N R 14 E

TYPE MONUMENT P.K.NAIL

ON SURFACE - ~~BELOW~~ ON

OFFSET 0.2' RT PAVEMENT

9.5' TO RT EDGE PAVEMENT

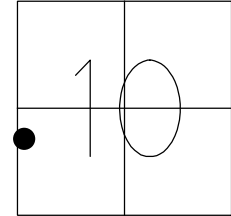
STATION: 316+84.22

HORIZ.DATUM: NAD83 2011

GEOID: 2012A

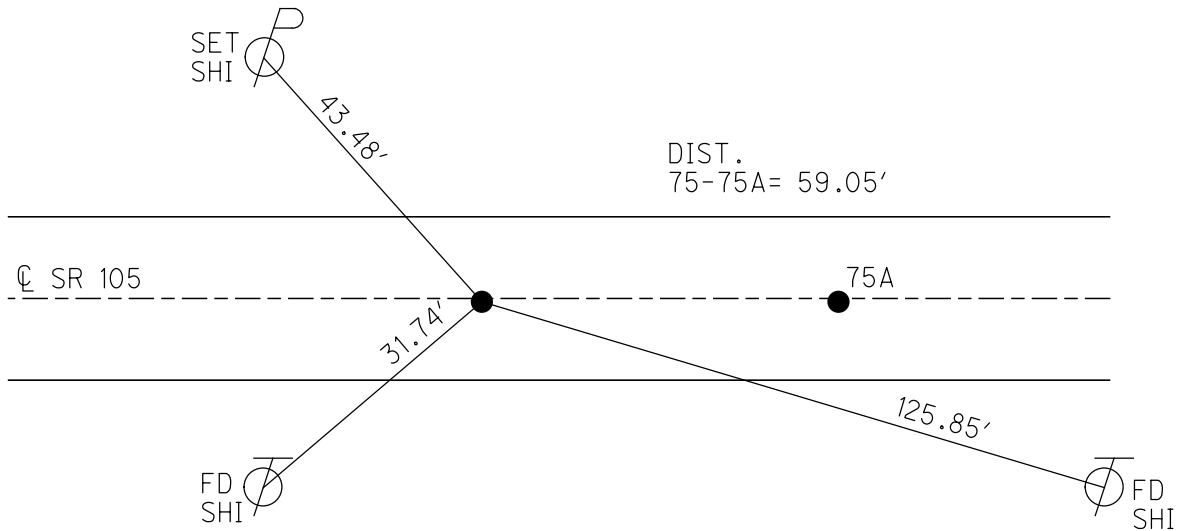
GRID: NORTHING: 666008.577

EASTING: 1765854.936



RECORD:

FD LG.R.R.SPIKE
4/19/00, MC
SET P.K./WASHER
6/23/00, KPM
FD P.K.NAIL
REF 75
4/30/18, JFO
FD P.K.NAIL
7/31/19, JFO
SET MAG/WASHER
12/23/19, JFO



O.D.O.T. DISTRICT 2 SURVEY OFFICE

PERSONNEL

REFERENCE NO. 75

SHEET 46 OF 96

NOTES K. Moser

H.C. M. CANTERBURY

DATE 4-19-00

ROUTE S.R. 105

R.C. M. BARNHISEL

WEATHER CLOUDY

COUNTY OTTAWA

TEMP. +60°F

TOWNSHIP HARRIS

SECTION 10

T6 N R 14 E

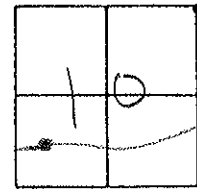
TYPE MONUMENT LS. R.R. SPIKES

ON SURFACE - BELOW SURFACE

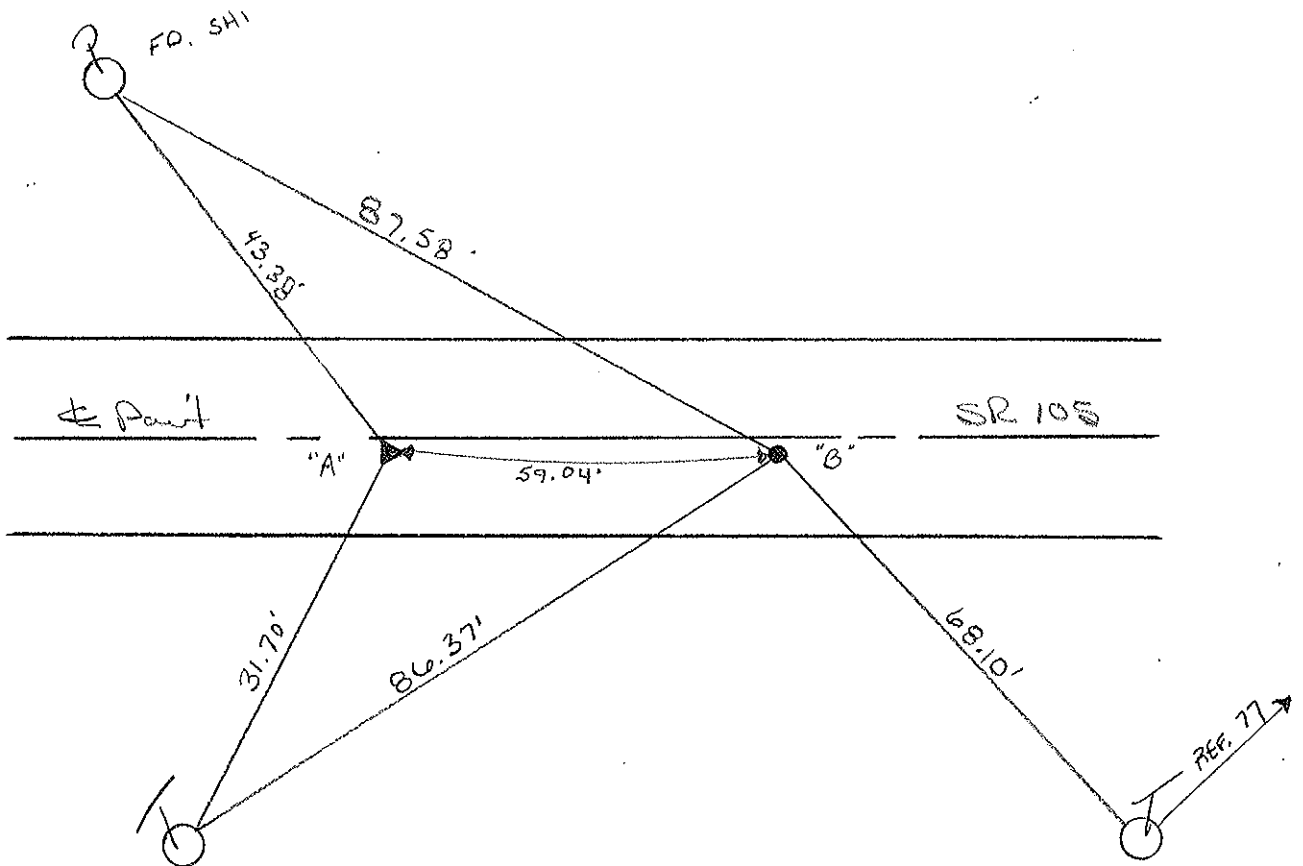
LEFT - C PAV'T. - RIGHT A-0.2' B-0.2'

^{A-9.5'}
_{B-9.5'} TO RT. EDGE PAVEMENT

S.L.M. A=317+63 B=318+22



RESET PK/WASHER
6-23-00
KPM



O.D.O.T. DISTRICT 2 SURVEY OFFICE

PERSONNEL

REFERENCE NO. 75 SHEET OF

NOTES Cronin

DRAWN 6/01/88

H.C. Ripple

DATE 8/06/87

ROUTE #105

R.C. Barbour

WEATHER sunny

COUNTY Ottawa

Geyman

TEMP. 70°

TOWNSHIP Harris

SECTION 10

T. 6 N R. 14 E

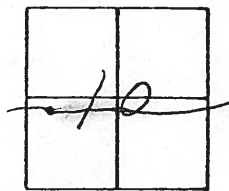
TYPE MONUMENT P.K. & washer

ON SURFACE - BELOW

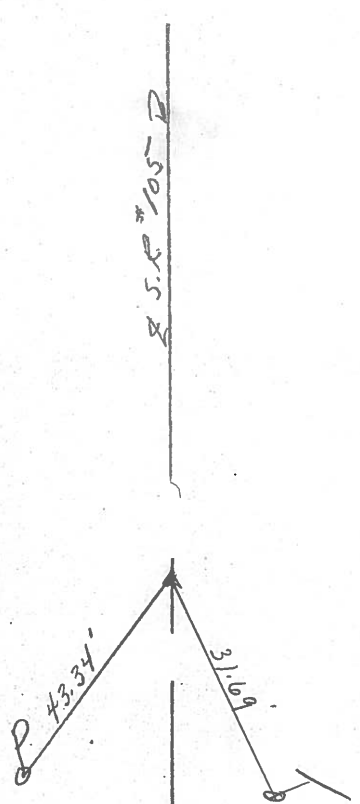
LEFT - PAV'T. - RIGHT

 TO EDGE PAVEMENT

S.L.M. 317408



P.K. & R.R. spike
below P.K. & washer



PERSONNEL TITLE PERSONNEL TITLE

COUNTY Ottawa DATE 4-17-74

S. R. 105 WEATHER

SEC. 10 TEMP.

DESCRIPTION Harris Twp. JOB NO.

LEFT CENTER LINE RIGHT

