

O.D.O.T. DISTRICT 2 SURVEY OFFICE (USE ONLY)

PERSONNEL

REFERENCE NO. 76

SHEET 59 OF 63

NOTES RHOADES

DATE 7/31/19

ROUTE SR 105

H.C. O'DONNELL

WEATHER CLOUDY

COUNTY OTTAWA

R.C. MILLER

TEMP. 72°

TOWNSHIP HARRIS

SECTION 10

DWG BY BALBAUGH

PID 92131

T 6 N R 14 E

TYPE MONUMENT P.K./WASHER

ON SURFACE - ~~BELOW~~ ON

OFFSET \odot PAVEMENT 0.2' LT : ~~RT~~

10.2' TO LT EDGE PAVEMENT

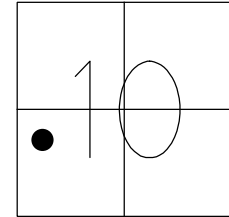
STATION: 318+93.20

HORZ.DATUM: NAD83 2011

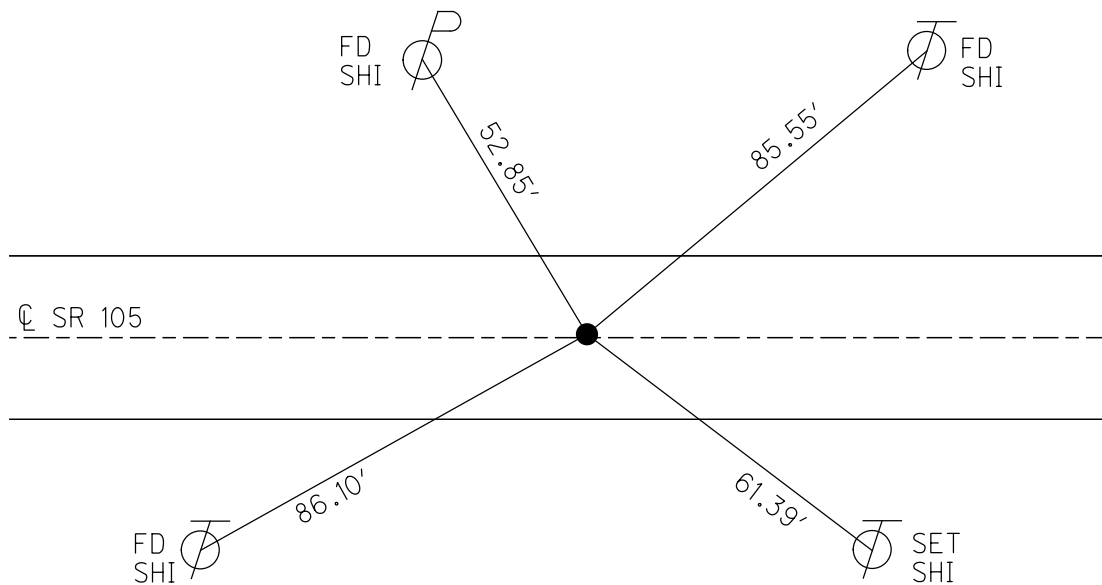
GEOID: 2012A

GRID: NORTHING: 666019.083

EASTING: 1766063.640



RECORD:
 FD P.K.NAIL
 4/19/00, MC
 SET P.K./WASHER
 6/23/00, KPM
 FD P.K./WASHER
 REF76
 4/30/18, JFO
 FD P.K./WASHER
 7/31/19, JFO
 SET MAG/WASHER
 12/23/19, JFO



O.D.O.T. DISTRICT 2 SURVEY OFFICE

PERSONNEL

REFERENCE NO. 76

SHEET 47 OF 96

NOTES K. MOSER

H.C. M. CANTERBURY

DATE 4-19-00

ROUTE S.R. 105

R.C. M. BARNHISEL

WEATHER CLOUDY

COUNTY OTTAWA

TEMP. +60°F

TOWNSHIP HARRIS

SECTION 10

T6 N R 14 E

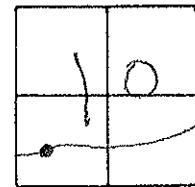
TYPE MONUMENT PK NAIL

ON SURFACE - BELOW SURFACE

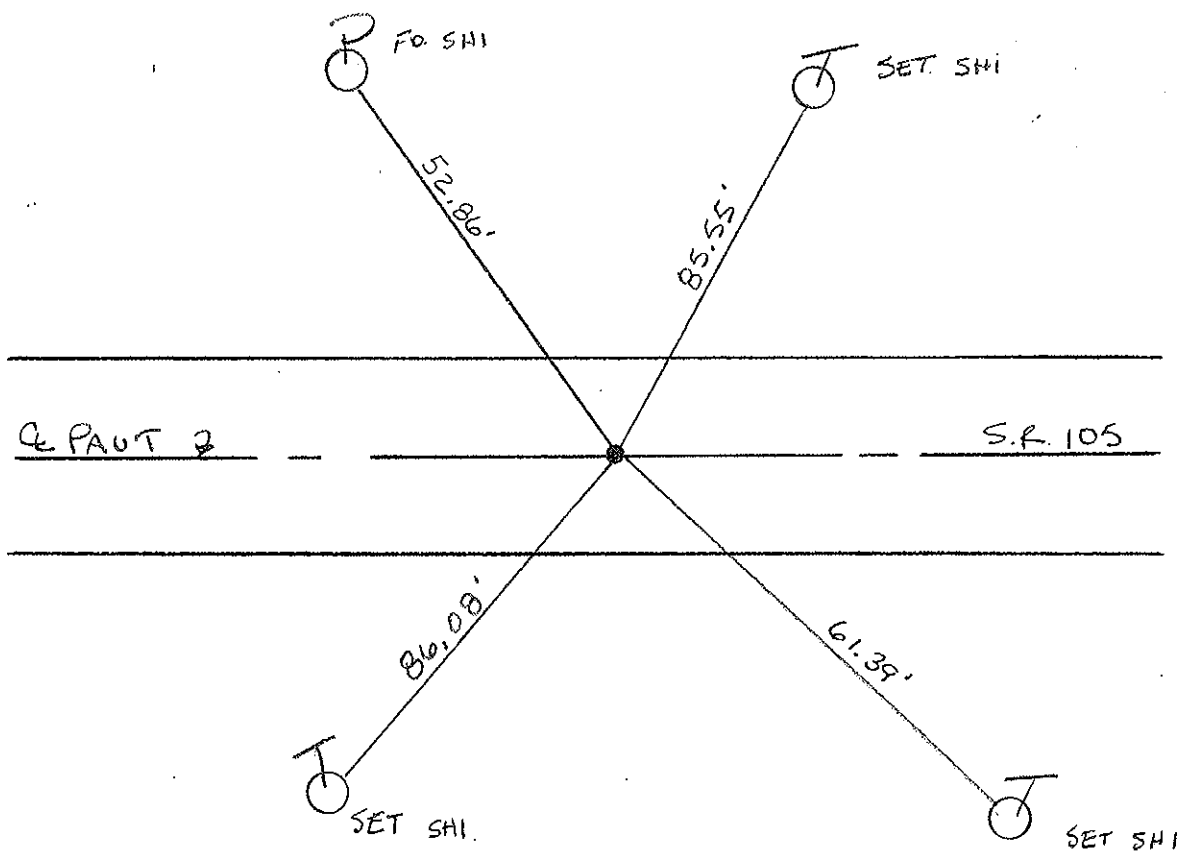
LEFT - 0 PAV'T - RIGHT 0.2 LT.

0.2 TO LT. EDGE PAVEMENT

S.L.M. 319 + 72



RESET PK/WASHER
 6-23-00
 KPM



PERSONNEL TITLE PERSONNEL TITLE

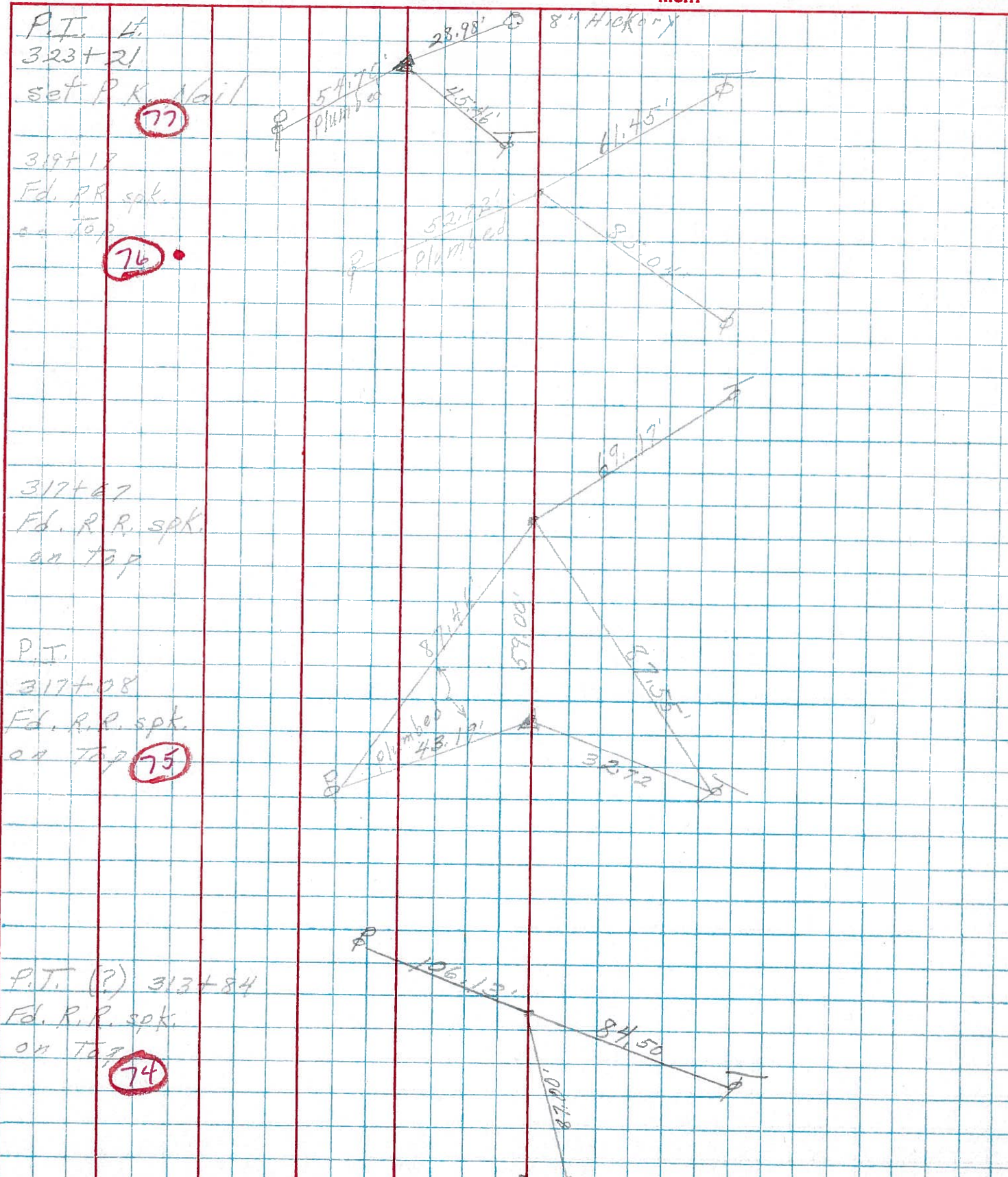
COUNTY Ottawa DATE 4-17-74

S. R. 105 WEATHER

SEC. 10 TEMP

DESCRIPTION Harris Twp JOB NO.

LEFT CENTER LINE RIGHT



P.T. Lt.
323+21

set P.K. Nail

77

319+18
Fd. RR spk.
on Top

76

317+67
Fd. R.R. spk.
on Top

P.T.
317+08
Fd. R.R. spk.
on Top

75

P.T. (?) 313+84
Fd. R.R. spk.
on Top

74