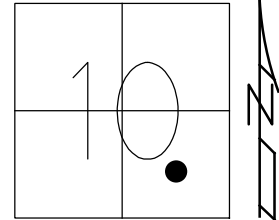


O.D.O.T. DISTRICT 2 SURVEY OFFICE (USE ONLY)

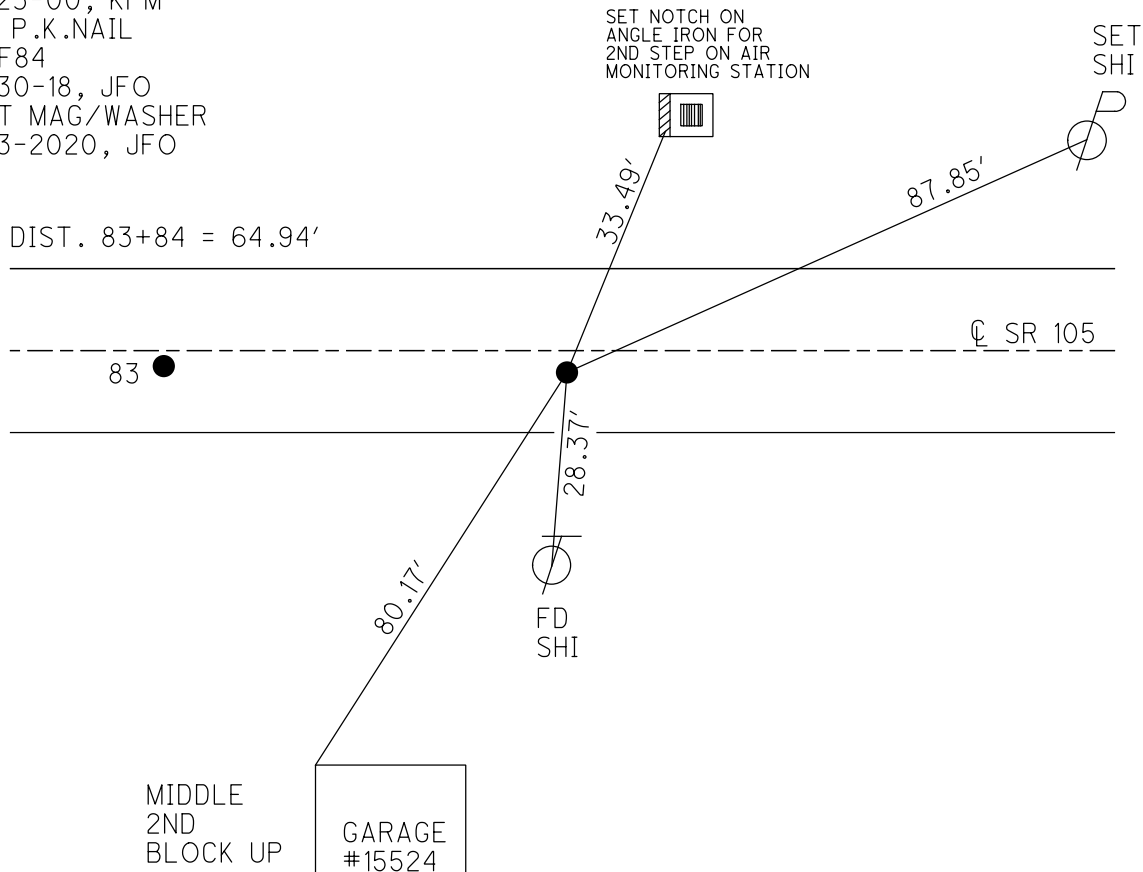
PERSONNEL _____ REFERENCE NO. 84 SHEET 65 OF 70
 NOTES RHOADES DATE 7-31-19 ROUTE SR 105
 H.C. O'DONNELL WEATHER CLOUDY COUNTY OTTAWA
 R.C. MILLER TEMP. 72° F TOWNSHIP HARRIS
 DWG BY AUBLE PID 92131 SECTION 10
 T 6 N R 14 E

TYPE MONUMENT P.K.NAIL
 ON SURFACE - ~~BELOW~~ ON _____
 OFFSET CL PAVEMENT 1.8' ~~LF~~ : RT
9.4' TO RT EDGE PAVEMENT
 STATION: 339+40.57



HORZ.DATUM: NAD83 2011 GEOID: 2012A
 GRID: NORTHING: 666039.758 EASTING: 1768102.131

RECORD:
 FD R.R.SPIKE
 4/19/00, KPM
 SET P.K./WASHER
 6-23-00, KPM
 FD P.K.NAIL
 REF84
 4-30-18, JFO
 SET MAG/WASHER
 4-3-2020, JFO



O.D.O.T. DISTRICT 2 SURVEY OFFICE

PERSONNEL

REFERENCE NO. 83,84

SHEET 52 OF 96

NOTES K. MOSER

H.C. M. CANTERBURY

DATE 4-19-00

ROUTE S.R. 105

R.C. M. BARNHISEL

WEATHER CLOUDY

COUNTY OTTAWA

TEMP. +60°F

TOWNSHIP HARRIS

SECTION 10

T6 N R 14 E

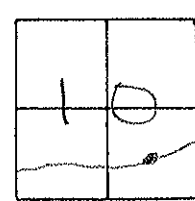
TYPE MONUMENT A' = PK/WASHER B = LG. R.R. SPIKE

ON SURFACE - BELOW SURFACE

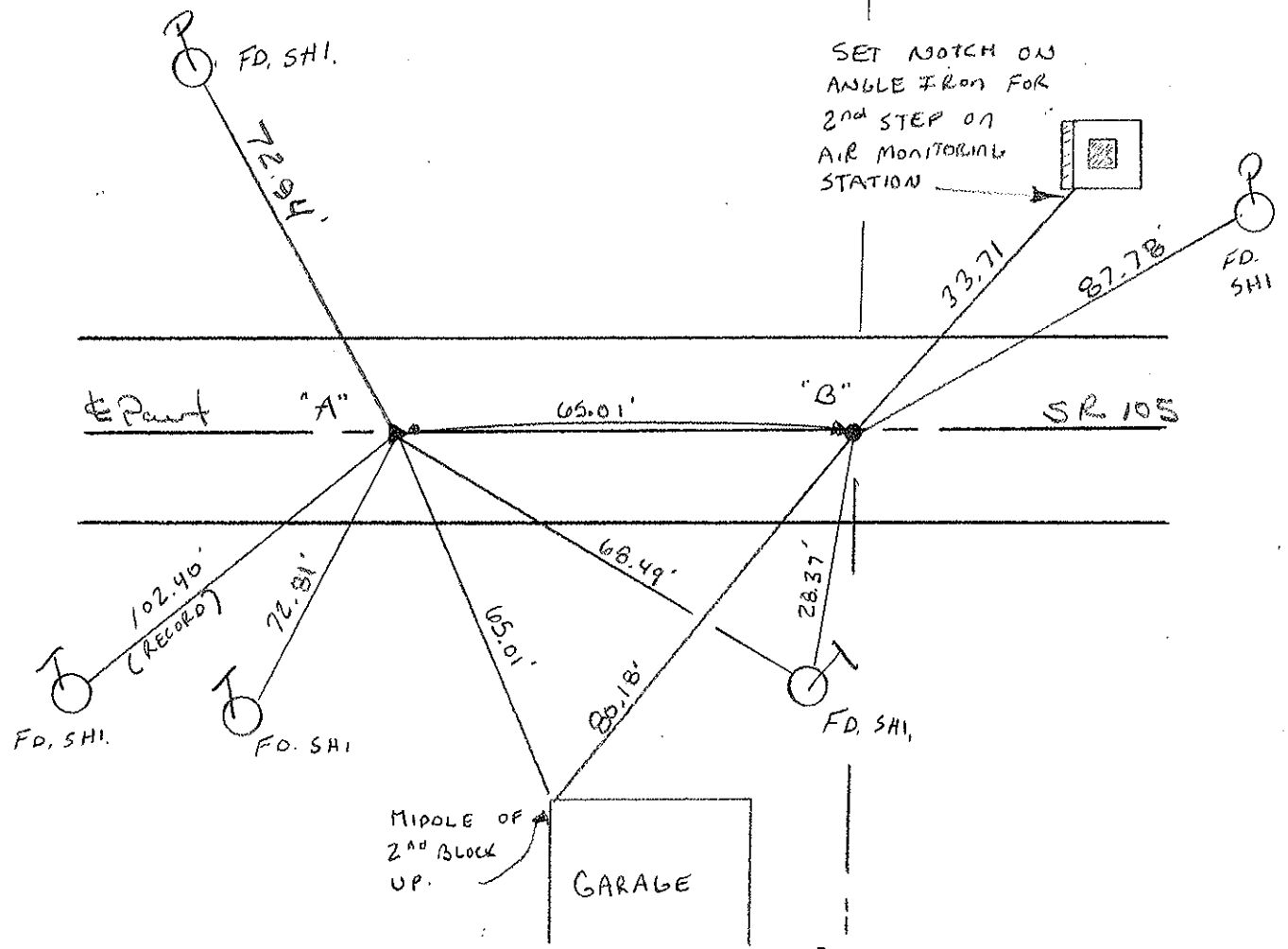
LEFT-LT. PAV'T. - RIGHT RT. A = 0.1' LT. B = 0.8 RT.

A = 10.7' B = 9.4' TO LT. RT. EDGE PAVEMENT

S.L.M. _____



RESET PK/WASHER
6-23-00
KPM



O.D.O.T. DISTRICT 2 SURVEY OFFICE

PERSONNEL

REFERENCE NO. 83

SHEET OF

NOTES Cronin

DRAWN 6/01/88

H.C. Ripple

DATE 8/06/87

ROUTE #105

R.C. Barbour

WEATHER sunny

COUNTY Ottawa

Geyman

TEMP. 70°

TOWNSHIP Harris

SECTION 10

T 6 N R 14 E

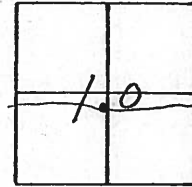
TYPE MONUMENT P.K. & washer

ON SURFACE - BELOW

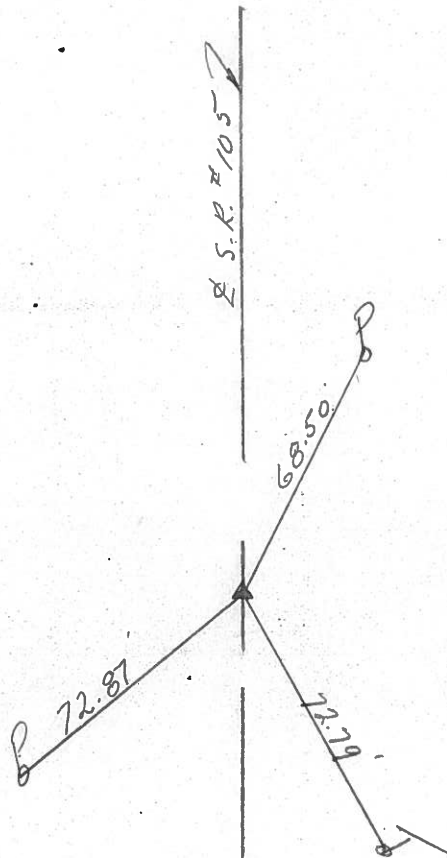
LEFT - PAV'T. - RIGHT

TO EDGE PAVEMENT

S.L.M. 339+00.4



P.K. a top bolt
below P.K. & washer



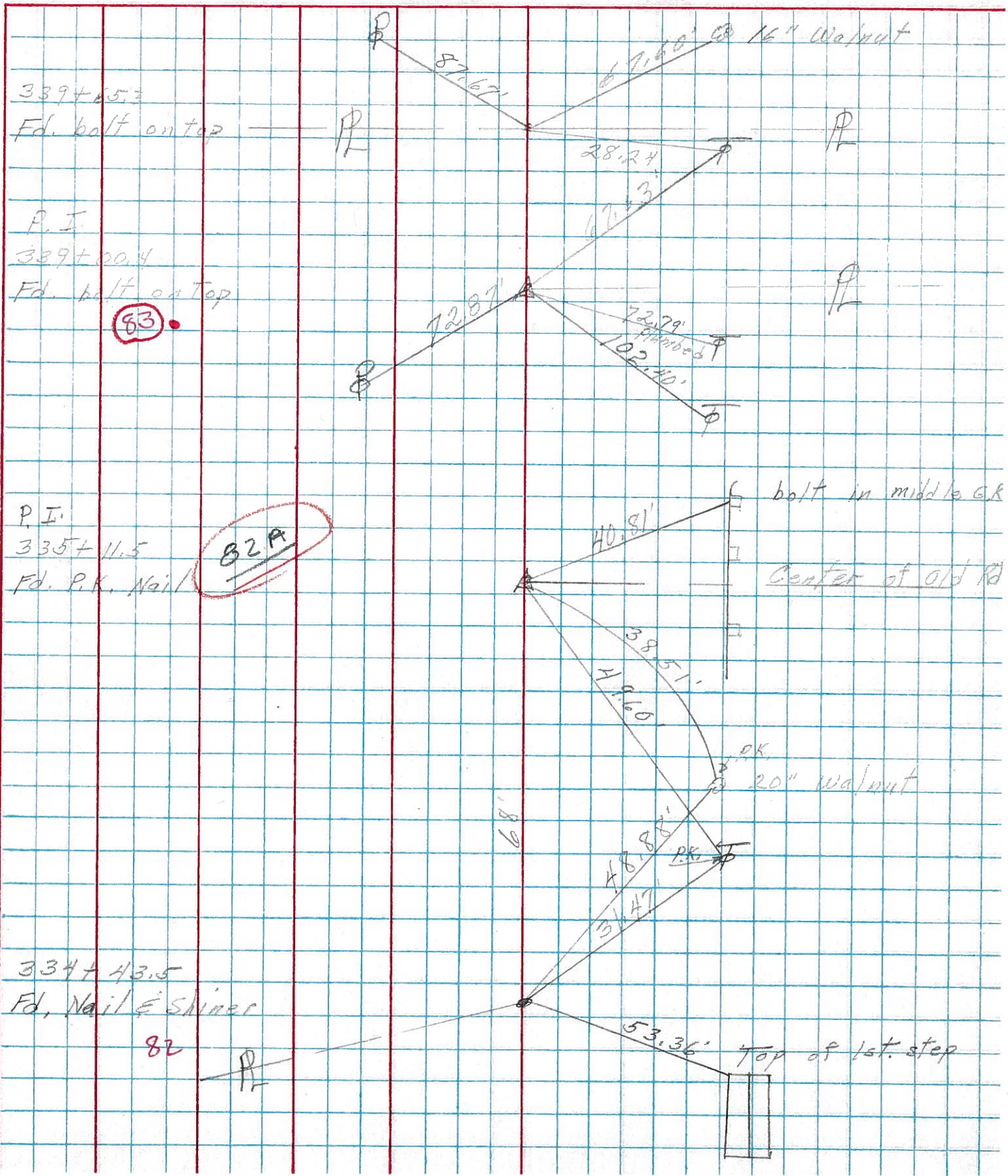
PERSONNEL TITLE PERSONNEL TITLE

COUNTY Ottawa DATE 4-17-74

S. R. 105 WEATHER Fair

SEC. 10 TEMP. 60°

DESCRIPTION Harris Twp. JOB NO. _____



PERSONNEL	TITLE	PERSONNEL	TITLE	COUNTY	DATE
Schneider				Ottawa	7-8-68
Mosser				S. R.	105
Barbour				WEATHER	Fair-Hot
Potts				SEC. San. Co. Line to Oak Harbor	TEMP. 90°
DESCRIPTION	Ties for Control Points			JOB NO.	

