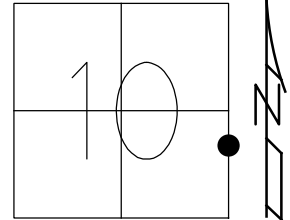


O.D.O.T. DISTRICT 2 SURVEY OFFICE (USE ONLY)

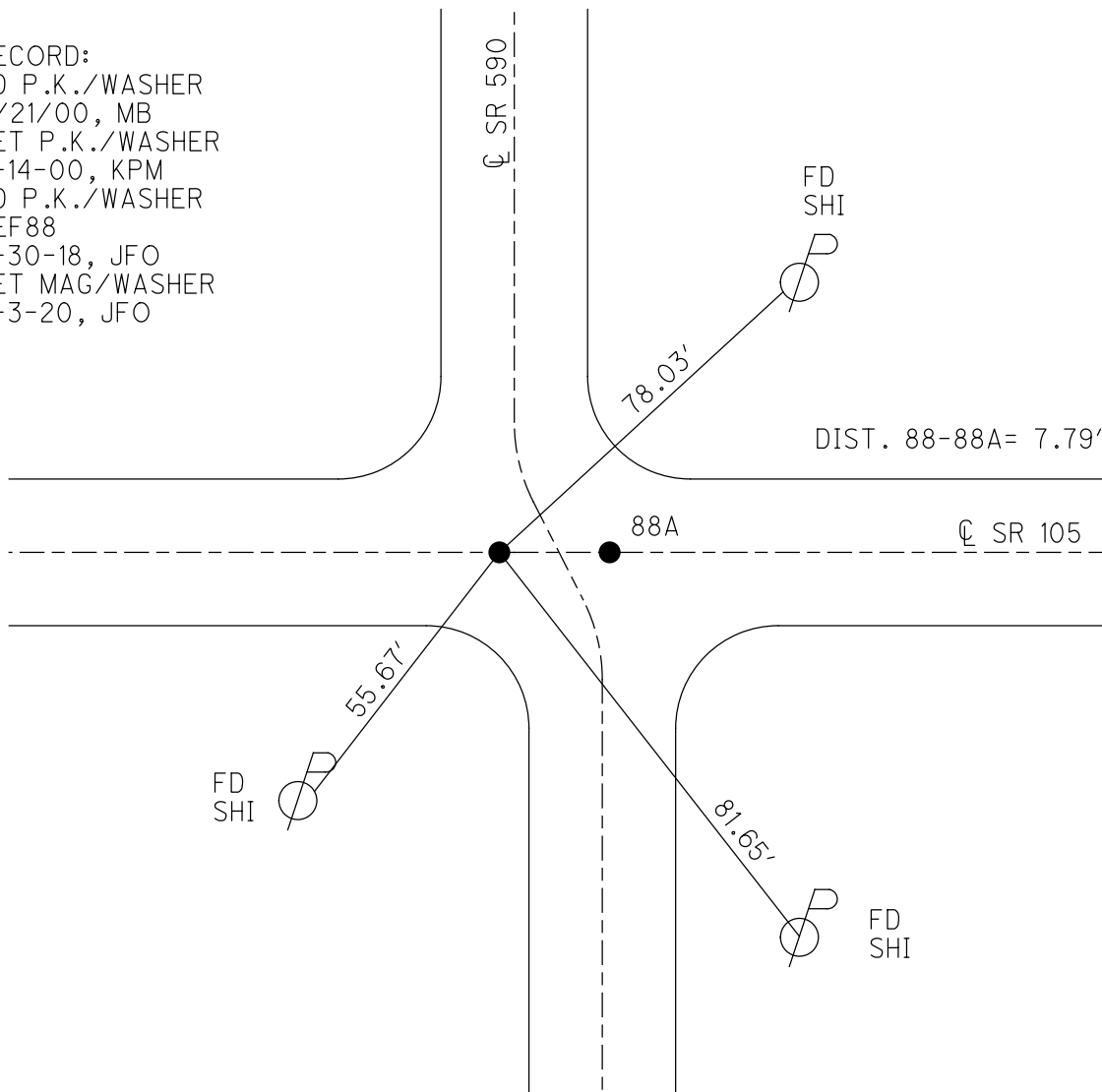
PERSONNEL	REFERENCE NO. <u>88</u>	SHEET <u>68</u> OF <u>70</u>
NOTES <u>RHOADES</u>	DATE <u>7-31-2019</u>	ROUTE <u>SR 105</u>
H.C. <u>O'DONNELL</u>	WEATHER <u>CLOUDY</u>	COUNTY <u>OTTAWA</u>
R.C. <u>MILLER</u>	TEMP. <u>76° F</u>	TOWNSHIP <u>HARRIS</u>
		SECTION <u>10</u>
DWG BY <u>AUBLE</u>	PID <u>92131</u>	T <u>6</u> N R <u>14</u> E

TYPE MONUMENT P.K./WASHER
 ON SURFACE - ~~BELOW~~ ON
 OFFSET C PAVEMENT ON LT : RT
- TO - EDGE PAVEMENT
 STATION: 365+83.77



HORZ.DATUM: NAD83 2011 GEOID: 2012A
 GRID: NORTHING: 666370.765 EASTING: 1770718.274

RECORD:
 FD P.K./WASHER
 4/21/00, MB
 SET P.K./WASHER
 6-14-00, KPM
 FD P.K./WASHER
 REF88
 4-30-18, JFO
 SET MAG/WASHER
 4-3-20, JFO



O.D.O.T. DISTRICT 2 SURVEY OFFICE

PERSONNEL

REFERENCE NO. 88-A

SHEET 55 OF 96

NOTES K. MOSER

#13 - SR590

H.C. M. CANTERBURY

DATE 4-21-00

ROUTE S.R. 105

R.C. M. BARNISEL

WEATHER CLOUDY

COUNTY OTTAWA

TEMP. +60°F

TOWNSHIP HARRIS

SECTION 11

T6 N R 14 E

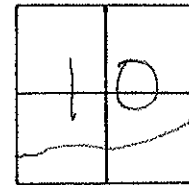
TYPE MONUMENT PK / WASHERS

ON SURFACE - ~~BELOW~~ SURFACE

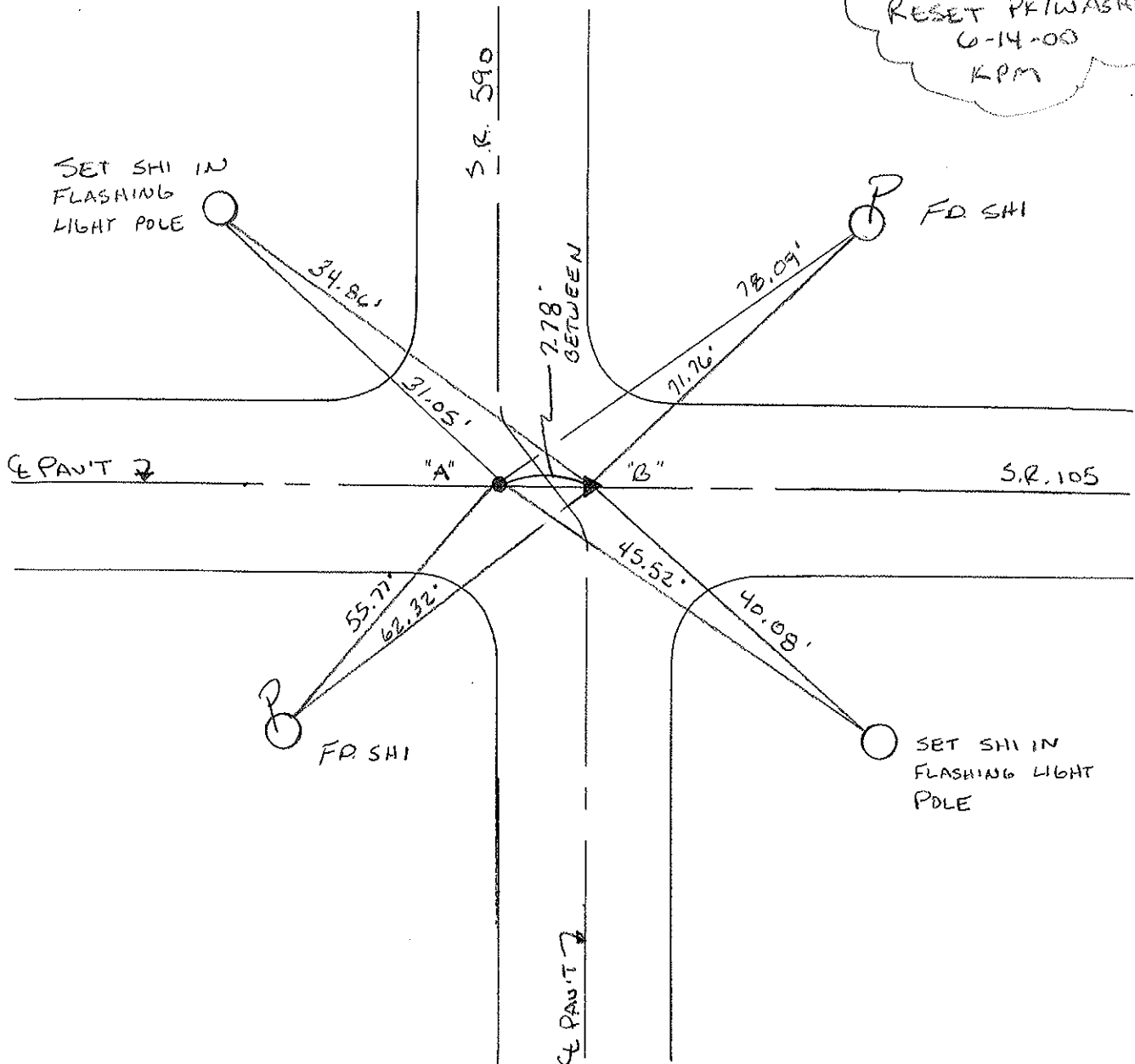
~~LEFT~~ - CE PAV'T. - RIGHT A & B CE PAV'T

- TO - EDGE PAVEMENT

S.L.M. A = 366 + 83 B = 366 + 91



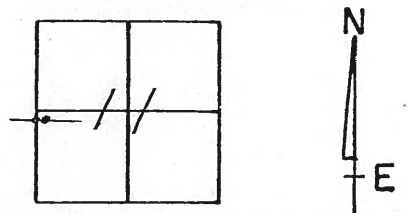
RESET PK/WASHERS
6-14-03
KPM



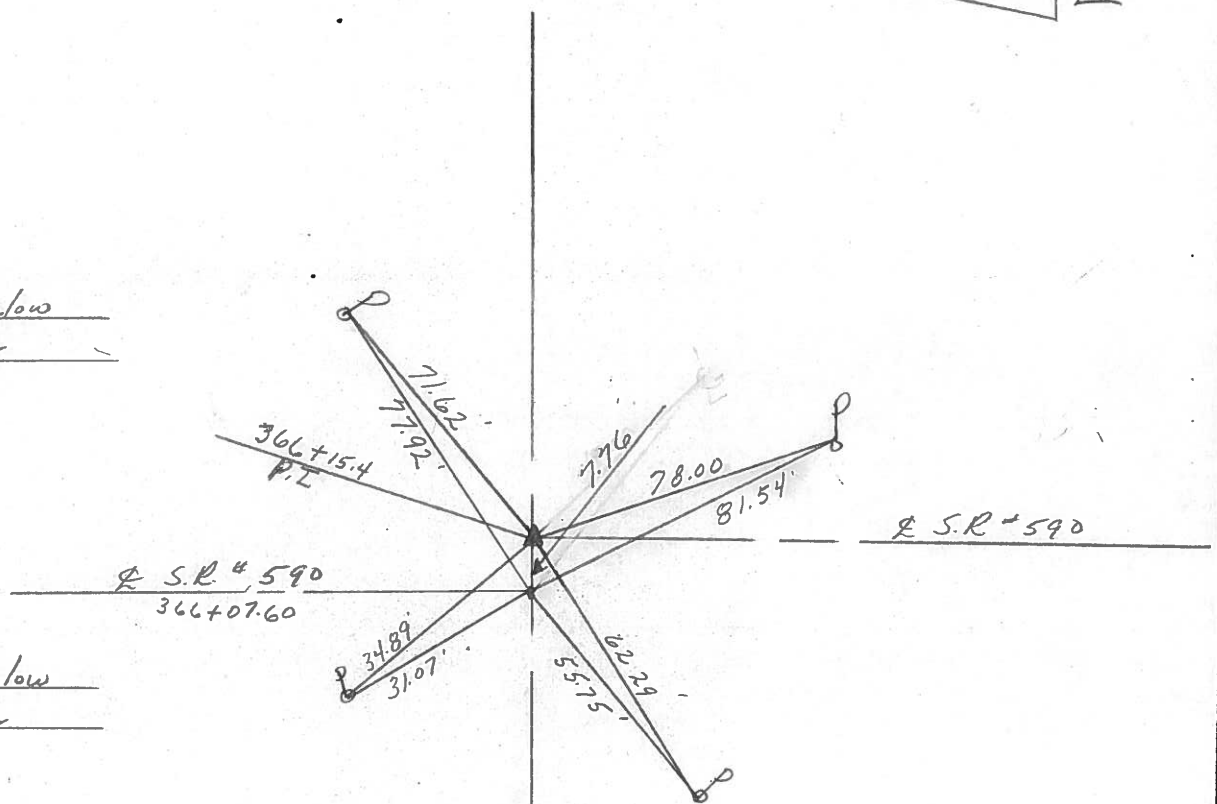
O.D.O.T. DISTRICT 2 SURVEY OFFICE

PERSONNEL _____ REFERENCE NO. 88A SHEET _____ OF _____
 NOTES Cronin DRAWN 6/02/88
 H.C. Ripple DATE 8/06/87 ROUTE #105
 R.C. Barbour WEATHER sunny COUNTY Ottawa
Geyman TEMP. 73° TOWNSHIP Harris
 SECTION 11
 T 6 N R 14 E

TYPE MONUMENT P.K. & washer
 ON SURFACE - BELOW _____
 LEFT - PAV'T. - RIGHT _____
 TO _____ EDGE PAVEMENT
 S.L.M. 366+15.4



P.I.
Pony spike below
P.K. & washer



R.R. spike below
P.K. & washer