

O.D.O.T. DISTRICT 2 SURVEY OFFICE (USE ONLY)

PERSONNEL

REFERENCE NO. 90

SHEET 1 OF 42

NOTES RHOADES

DATE 8-1-2019

ROUTE SR 105

H.C. O'DONNELL

WEATHER SUNNY

COUNTY OTTAWA

R.C. MILLER

TEMP. 74°F

TOWNSHIP HARRIS

SECTION 11

DWG BY AUBLE PID 92131

T 6 N R 14 E

TYPE MONUMENT P.K.NAIL

~~ON SURFACE~~ - BELOW 2"

OFFSET \odot PAVEMENT 3' ~~LT~~ : RT

8.6' TO RT EDGE PAVEMENT

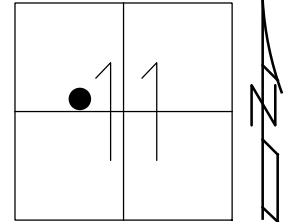
STATION: 381+53.10

HORZ.DATUM: NAD83 (2011)

GEOID: 2012A

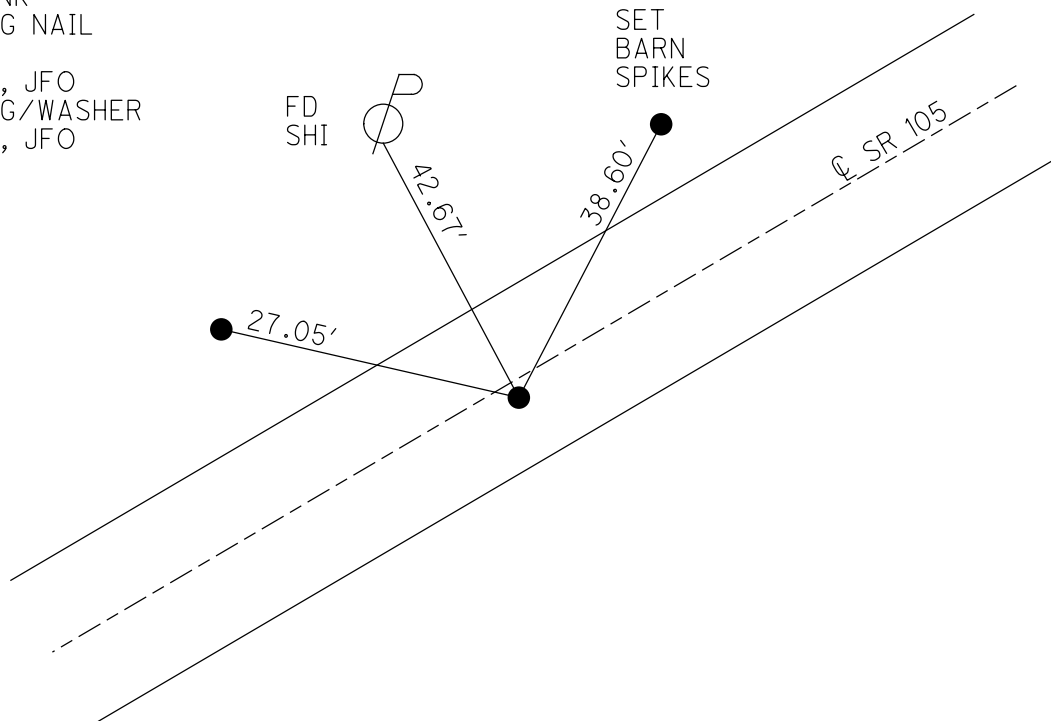
GRID: NORTHING: 666736.519

EASTING: 1772244.313



RECORD:

- FD P.K.NAIL
- 4/21/00, MB
- SET P.K./WASHER
- 6-9-00, KPM
- FD SHANK
- SET MAG NAIL
- REF90
- 5-19-18, JFO
- SET MAG/WASHER
- 4-3-20, JFO



O.D.O.T. DISTRICT 2 SURVEY OFFICE

PERSONNEL

REFERENCE NO. 90

SHEET 57 OF 96

NOTES K. MOSER

H.C. M. CANTERBURY

R.C. M. BARNISEL

DATE 4-21-00

WEATHER CLOUDY

TEMP. +55°F

ROUTE S.R. 105

COUNTY OTTAWA

TOWNSHIP HARRIS

SECTION 11

T6 N R 14 E

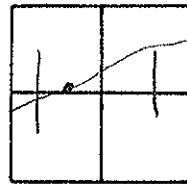
TYPE MONUMENT PK NAIL

ON SURFACE - BELOW 2" Below

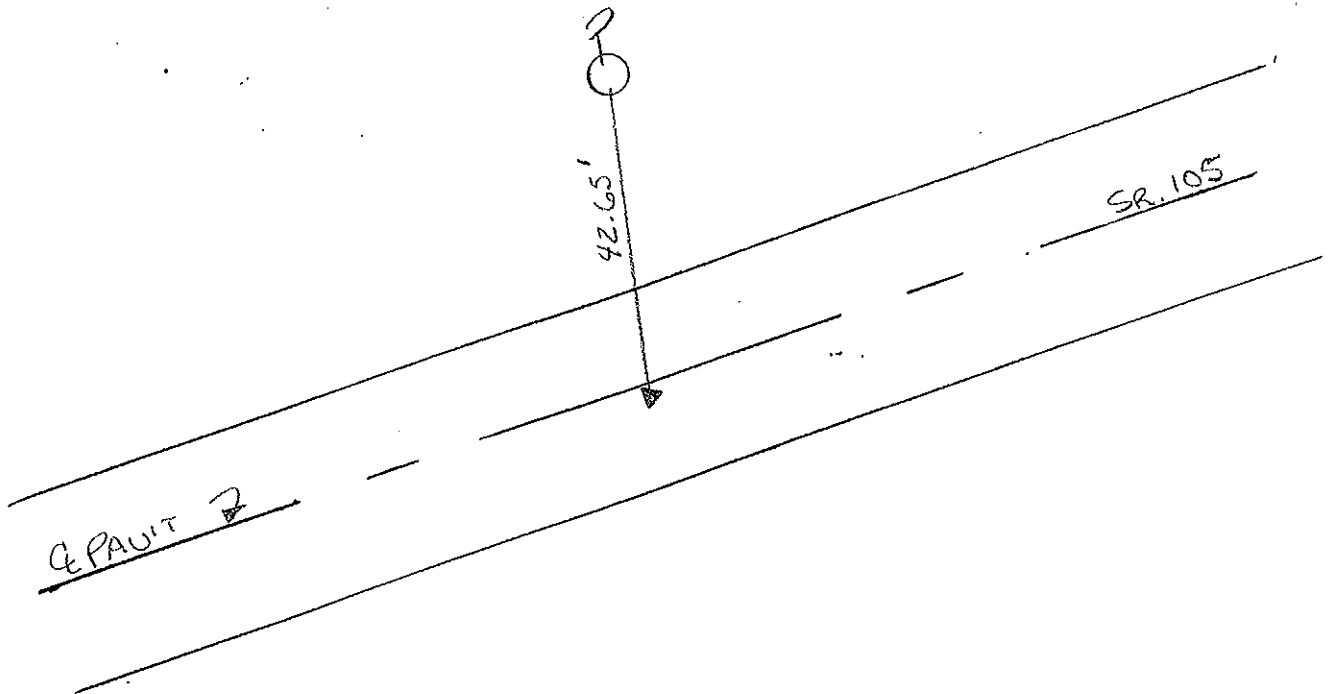
LEFT - C PAVT. - RIGHT 2.0' RT.

B.6 TO RT EDGE PAVEMENT

S.L.M. 382 +55



RESET PK/WASHER
6-9-00
KPM



O.D.O.T. DISTRICT 2 SURVEY OFFICE

PERSONNEL _____ REFERENCE NO. 90 SHEET _____ OF _____

NOTES Cronin DRAWN 6/02/88

H.C. Ripple DATE 8/20/87 ROUTE #105

R.C. Barbour WEATHER sunny COUNTY Ottawa

Geyman TEMP. 72° TOWNSHIP Harris

SECTION 11

T.G.N.R.I.E

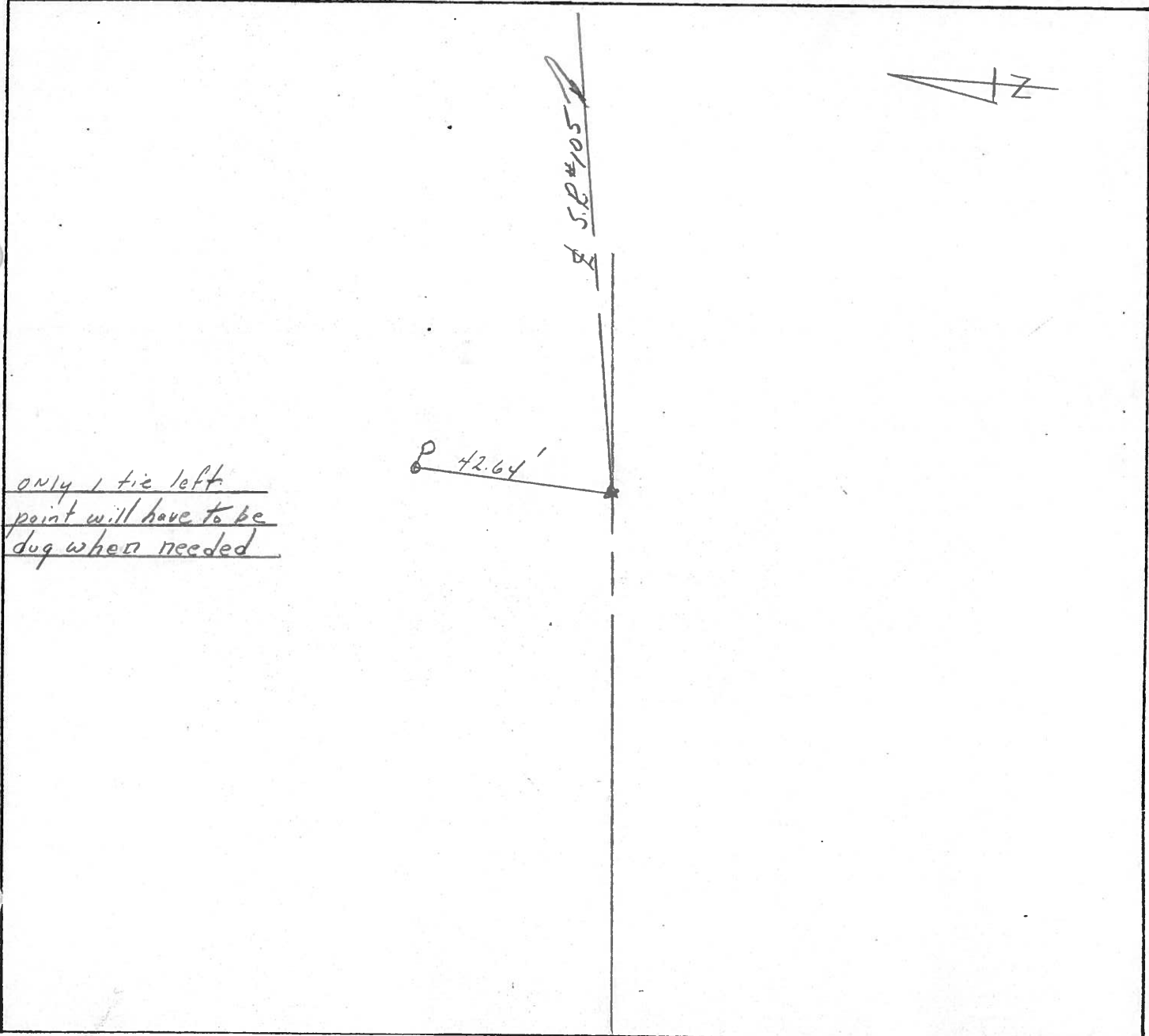
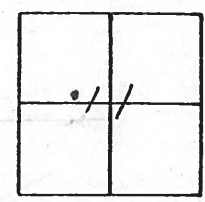
TYPE MONUMENT P.K.

ON SURFACE - BELOW _____

LEFT - ¢ PAV'T. - RIGHT 1/2'

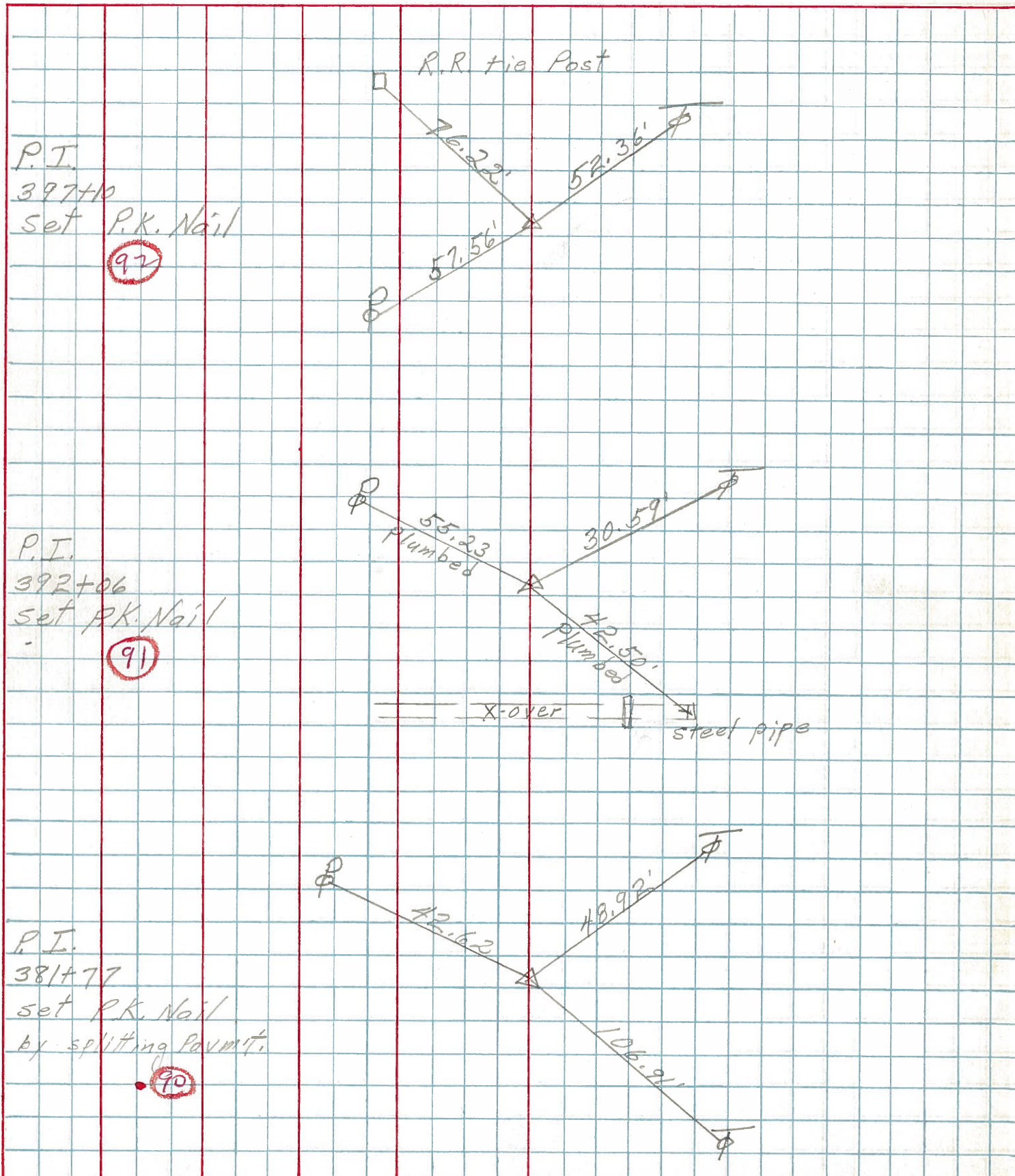
_____ TO _____ EDGE PAVEMENT

S.L.M. 381+77



PERSONNEL	TITLE	PERSONNEL	TITLE	COUNTY	DATE	WEATHER	TEMP.
Schneider				O. Hawa	5-2-74	Fair	55°
Mosser		Cronin		S. R. 105			
Barbour		Ripple		SEC. 11			
		Geyman					

DESCRIPTION Harris' Top JOB NO. _____



P.I.
397+10
set P.K. Nail
(92)

P.I.
392+06
set P.K. Nail
(91)

P.I.
381+77
set P.K. Nail
by splitting Pavmt.
(90)