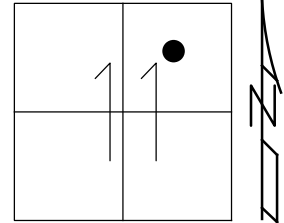


O.D.O.T. DISTRICT 2 SURVEY OFFICE (USE ONLY)

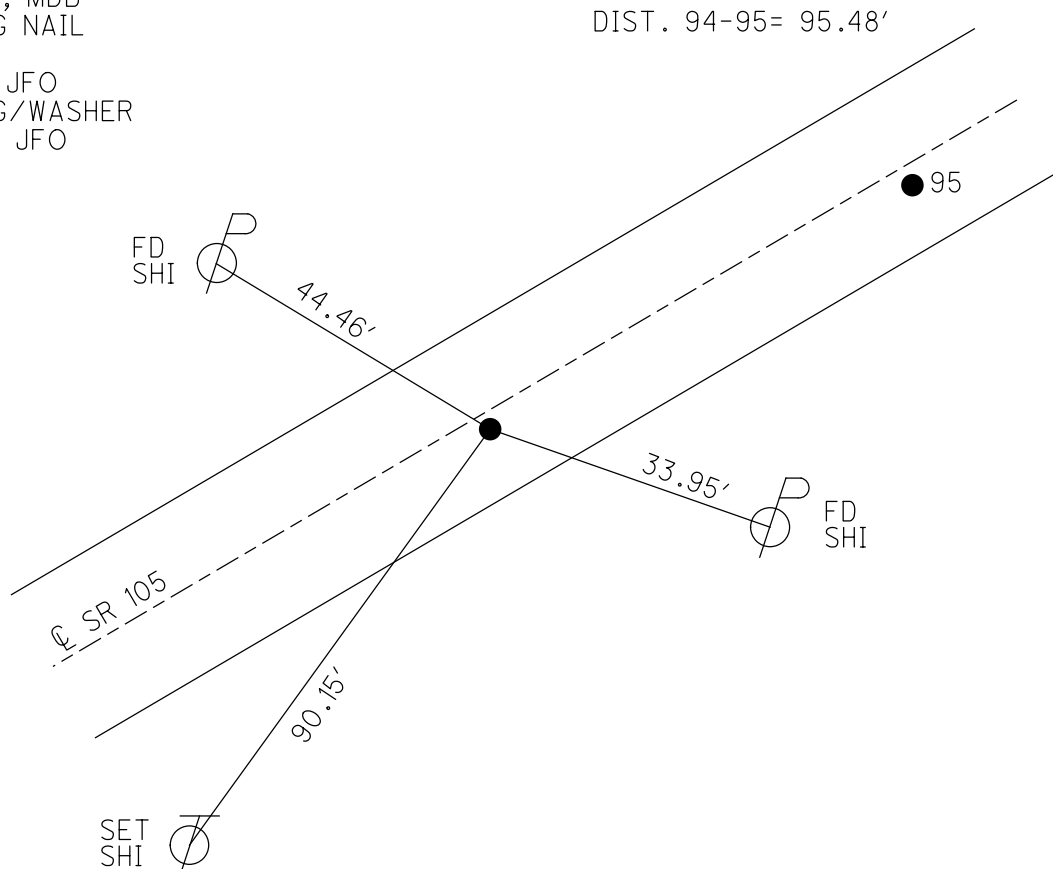
|                       |                         |                             |
|-----------------------|-------------------------|-----------------------------|
| PERSONNEL             | REFERENCE NO. <u>94</u> | SHEET <u>5</u> OF <u>42</u> |
| NOTES <u>RHOADES</u>  | DATE <u>8-1-2019</u>    | ROUTE <u>SR 105</u>         |
| H.C. <u>O'DONNELL</u> | WEATHER <u>SUNNY</u>    | COUNTY <u>OTTAWA</u>        |
| R.C. <u>MILLER</u>    | TEMP. <u>74°F</u>       | TOWNSHIP <u>HARRIS</u>      |
| DWG BY <u>AUBLE</u>   | PID <u>92131</u>        | SECTION <u>11</u>           |
|                       |                         | T <u>6</u> N R <u>14</u> E  |

TYPE MONUMENT MAG NAIL  
 ON SURFACE - ~~BELOW~~ ON \_\_\_\_\_  
 OFFSET  $\varnothing$  PAVEMENT 2.0' ~~LT~~ : RT  
9.1' TO RT EDGE PAVEMENT  
 STATION: 405+94.72



HORZ. DATUM: NAD83 (2011)      GEOID: 2012A  
 GRID: NORTHING: 667491.240      EASTING: 1774564.034

RECORD:  
 FD P.K./WASHER  
 4/24/00, MB  
 SET P.K./WASHER  
 6-14-00, MDB  
 SET MAG NAIL  
 REF94  
 5-9-18, JFO  
 SET MAG/WASHER  
 4-3-20, JFO



# O.D.O.T. DISTRICT 2 SURVEY OFFICE

PERSONNEL

REFERENCE NO. 94

SHEET 61 OF 96

NOTES M. BARNHISEL

H.C. M. CANTERBURY

R.C. M. BARNHISEL

DATE 4-24-00

WEATHER Sunny

TEMP. 76.0°F

ROUTE S.R. 105

COUNTY OTTAWA

TOWNSHIP HARRIS

SECTION 11

T6 N R 14 E

DRAWN BY: K. MOSER

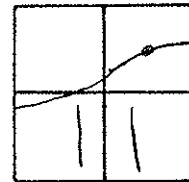
TYPE MONUMENT PK / WASHER

ON SURFACE - ~~BELOW~~ SURFACE

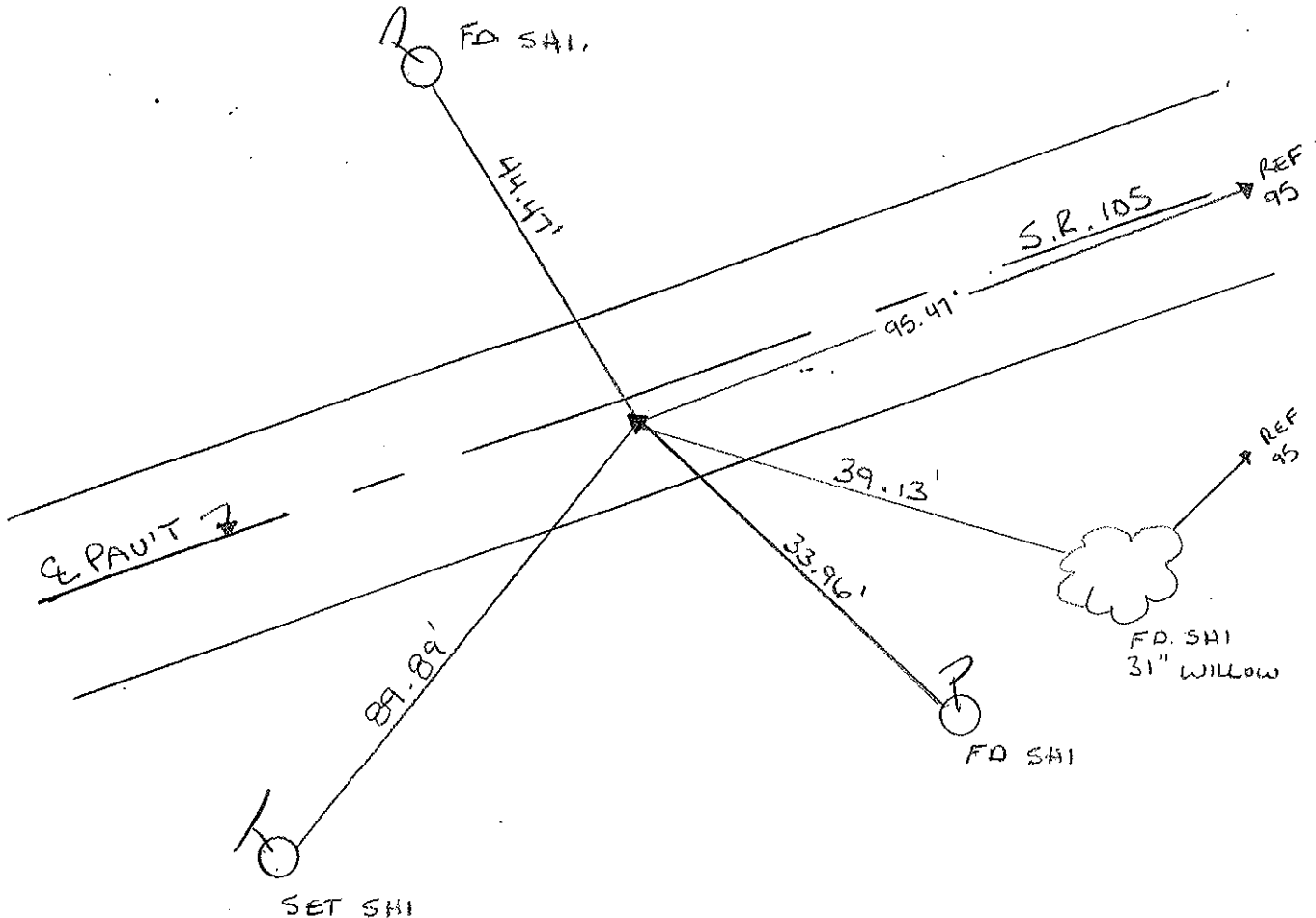
~~LEFT - C PAV'T.~~ - RIGHT 2.0'

9.1' TO RT. EDGE PAVEMENT

S.L.M. 407 + 03



RESET PK / WASHER  
 6-14-00  
 MDS



# O.D.O.T. DISTRICT 2 SURVEY OFFICE

PERSONNEL

REFERENCE NO. 94

SHEET      OF     

NOTES Cronin

DRAWN 6/02/87

H.C. Ripple

DATE 8/20/87

R.C. Barbour

WEATHER     

Geyman

TEMP.     

ROUTE #105

COUNTY Ottawa

TOWNSHIP Harris

SECTION 11

T 6 N R 14 E

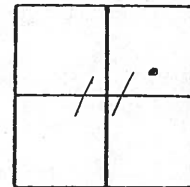
TYPE MONUMENT P.K. washer

ON SURFACE - BELOW     

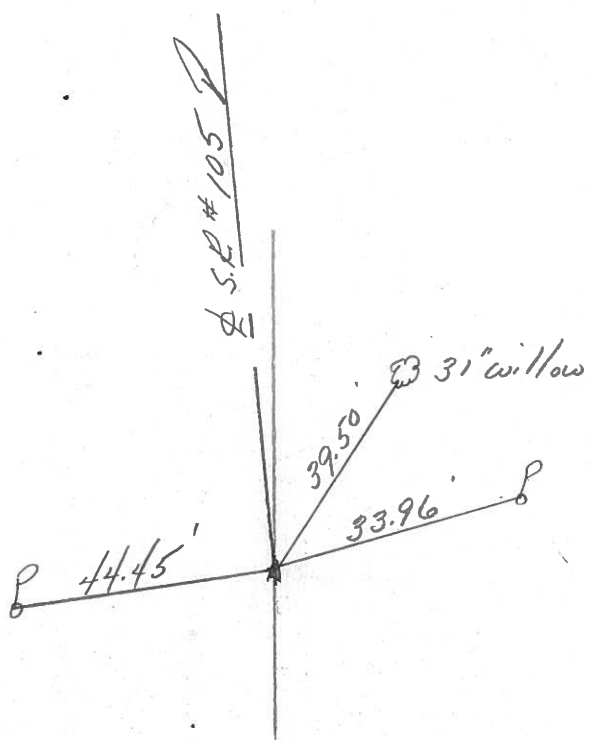
LEFT - ☉ PAV'T. - RIGHT 2±

     TO      EDGE PAVEMENT

S.L.M. 406+19



R.R. spike below  
P.K. washer



PERSONNEL \_\_\_\_\_ TITLE \_\_\_\_\_ PERSONNEL \_\_\_\_\_ TITLE \_\_\_\_\_  
 COUNTY Ottawa DATE 5-2-74  
 S. R. 105 WEATHER Cloudy  
 SEC. 11 TEMP. 60°

DESCRIPTION Harris Tap LEFT \_\_\_\_\_ CENTER LINE \_\_\_\_\_ RIGHT \_\_\_\_\_ JOB NO. \_\_\_\_\_

