

O.D.O.T. DISTRICT 2 SURVEY OFFICE (USE ONLY)

PERSONNEL

REFERENCE NO. 95

SHEET 6 OF 42

NOTES RHOADES

DATE 8-1-2019

ROUTE SR 105

H.C. O'DONNELL

WEATHER SUNNY

COUNTY OTTAWA

R.C. MILLER

TEMP. 74°F

TOWNSHIP HARRIS

SECTION 11

DWG BY AUBLE PID 92131

T 6 N R 14 E

TYPE MONUMENT MAG NAIL

ON SURFACE - ~~BELOW~~ ON

OFFSET CL PAVEMENT 1.2' ~~RT~~ : RT

9.5' TO RT EDGE PAVEMENT

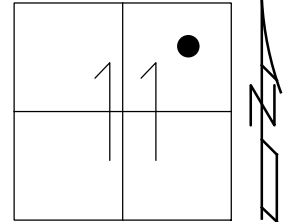
STATION: 406+90.20

HORZ.DATUM: NAD83 (2011)

GEOID: 2012A

GRID: NORTHING: 667524.596

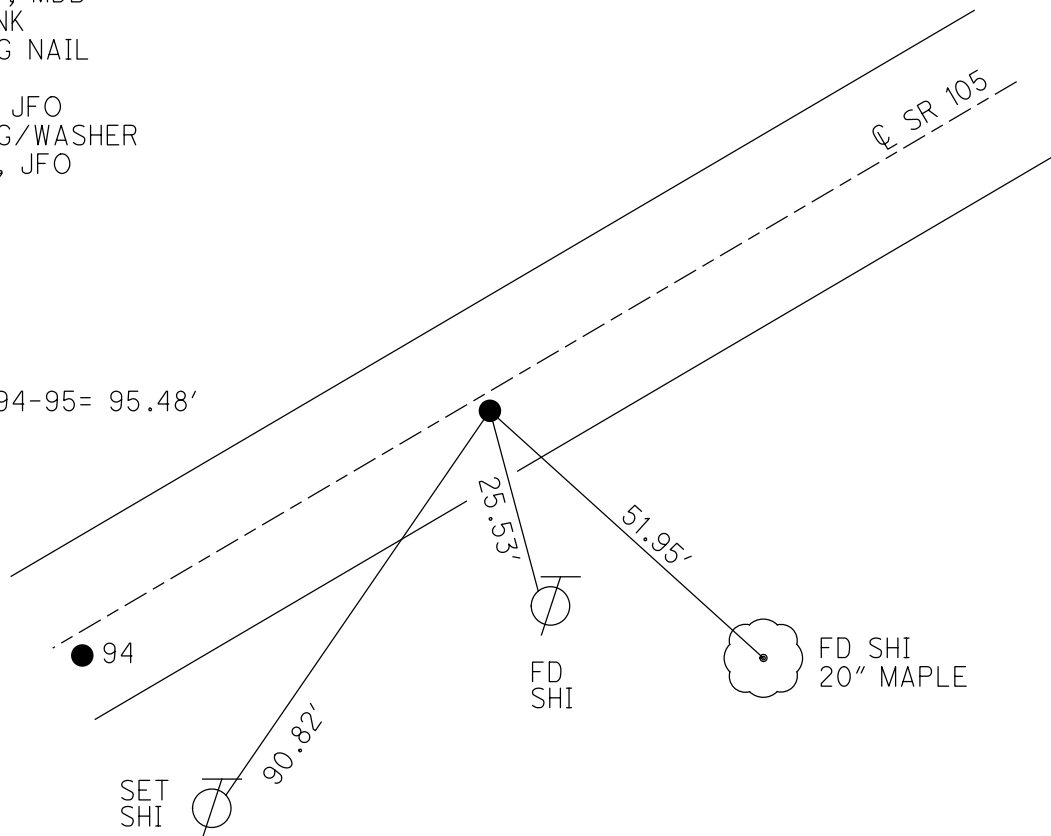
EASTING: 1774653.436



RECORD:

- FD LG.R.R.SPIKE
- 4/24/00, MB
- SET P.K./WASHER
- 6-14-00, MDB
- FD SHANK
- SET MAG NAIL
- REF95
- 5-9-18, JFO
- SET MAG/WASHER
- 4-3-20, JFO

DIST. 94-95= 95.48'



O.D.O.T. DISTRICT 2 SURVEY OFFICE

PERSONNEL

REFERENCE NO. 95

SHEET 62 OF 96

NOTES M. BARNHISEL

H.C. M. CANTERBURY

R.C. M. BARNHISEL

DATE 4-24-00

WEATHER Sunny

TEMP. 76.0°F

DRAWN BY: K. MOSER

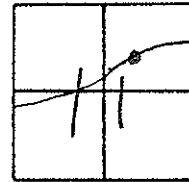
ROUTE S.R. 105

COUNTY OTTAWA

TOWNSHIP HARRIS

SECTION 11

T6 N R 14 E



TYPE MONUMENT Lg. RR. SPIKE

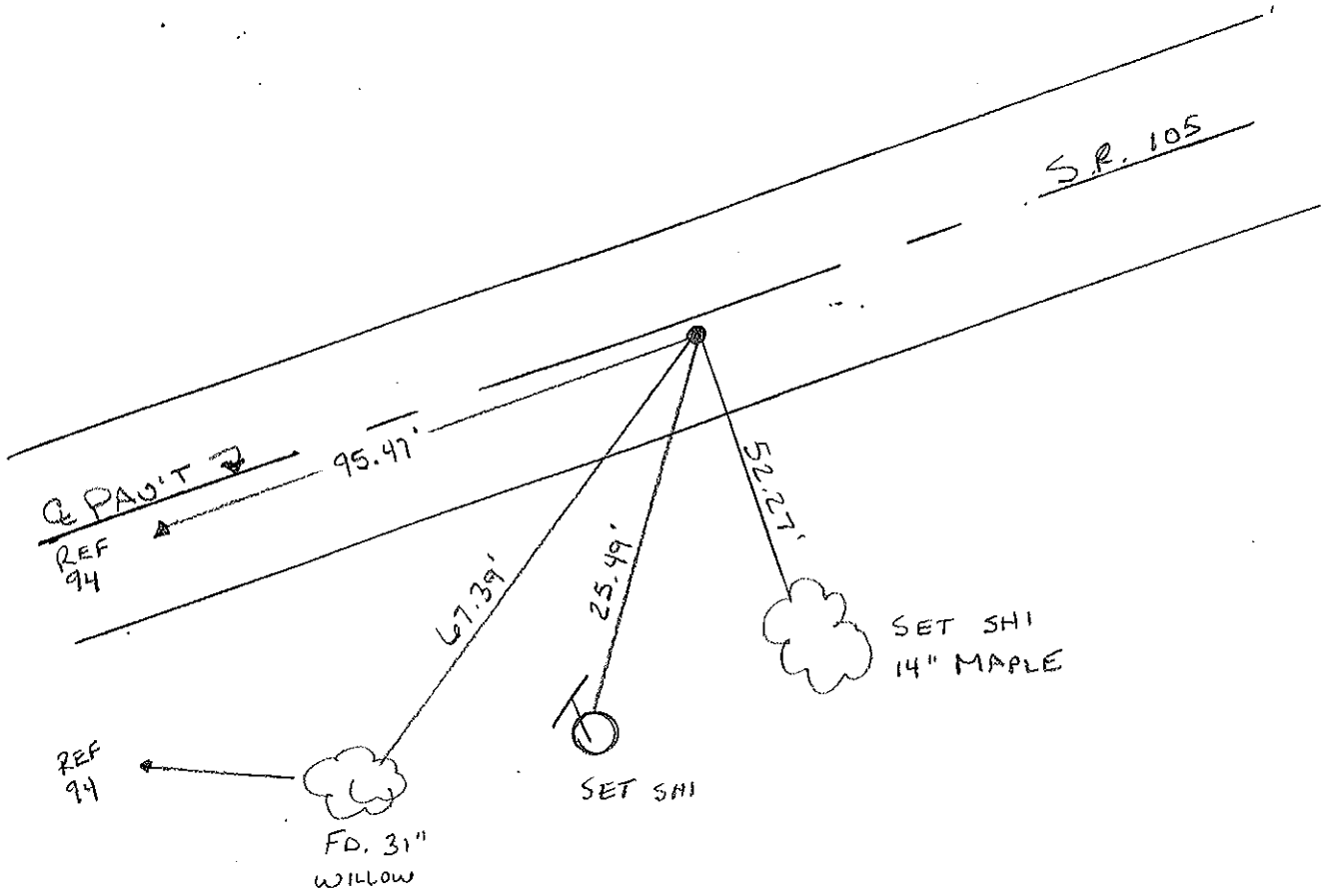
ON SURFACE - BELOW 4" BELOW

LEFT - C PAV'T. - RIGHT 1/2' RT.

9.5 TO RT EDGE PAVEMENT

S.L.M. 407+98

RESET PK/WASHER
 6-14-00
 MDB



PERSONNEL TITLE PERSONNEL TITLE

COUNTY Ottawa

DATE 5-2-74

S. R. 105

WEATHER Cloudy

SEC. 11

TEMP. 60°

DESCRIPTION Harris Twp

JOB NO.

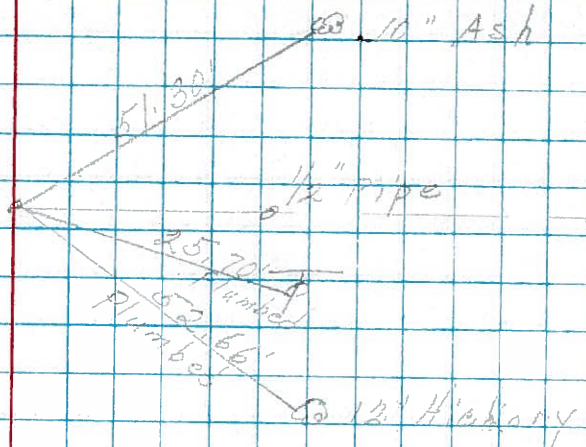
LEFT

CENTER LINE

RIGHT

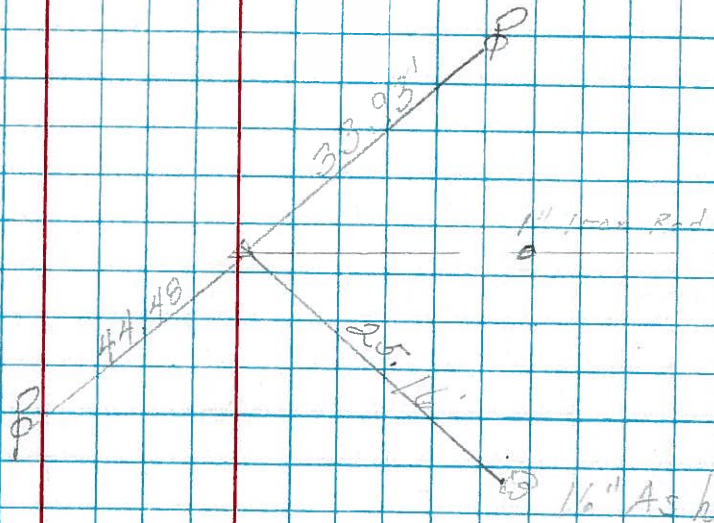
P.O.T.
Fd. R. R. Spk
487+14

95



P.T.
Fd. R. R. Spk
406+19

94



P.T.
400+98.5
Set P.K. Nail

93

