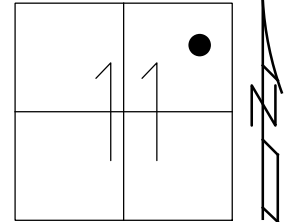


O.D.O.T. DISTRICT 2 SURVEY OFFICE (USE ONLY)

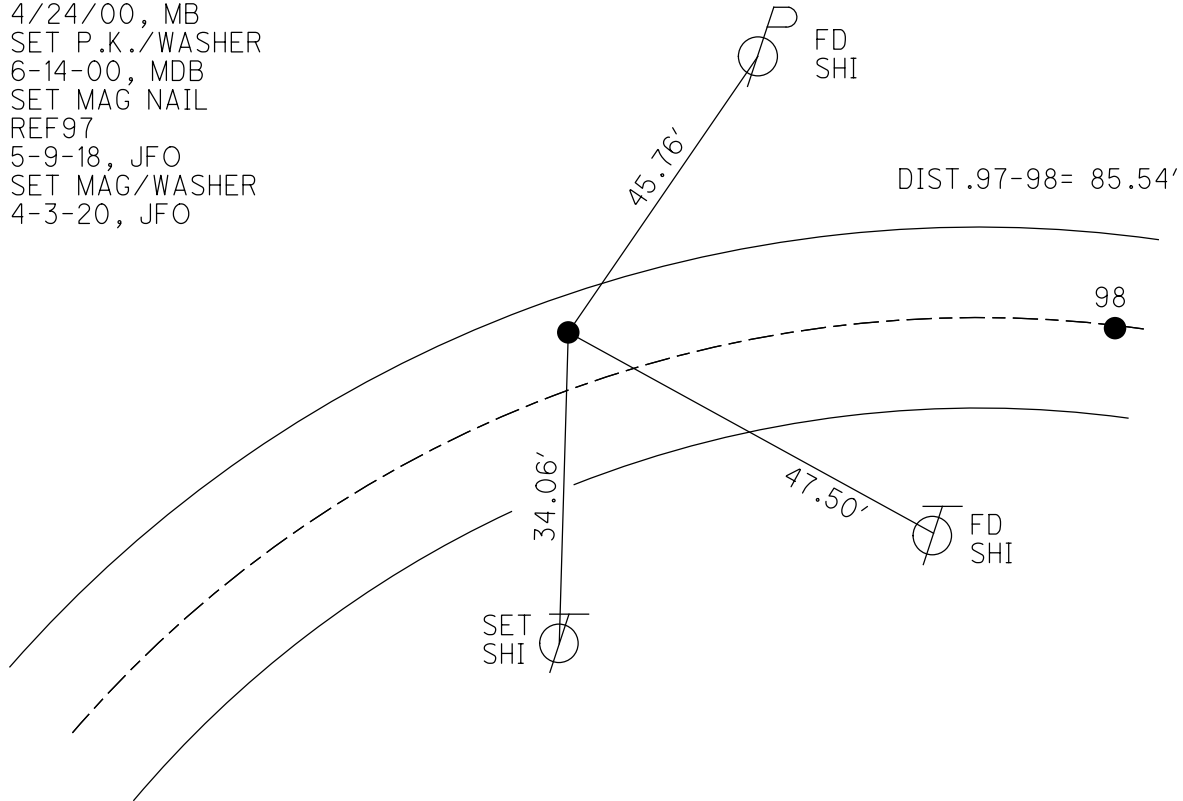
PERSONNEL _____ REFERENCE NO. 97 SHEET 8 OF 42
 NOTES RHOADES DATE 8-1-2019 ROUTE SR 105
 H.C. O'DONNELL WEATHER SUNNY COUNTY OTTAWA
 R.C. MILLER TEMP. 74°F TOWNSHIP HARRIS
 DWG BY AUBLE PID 92131 SECTION 11
 T 6 N R 14 E

TYPE MONUMENT MAG NAIL
 ON SURFACE - ~~BELOW~~ ON
 OFFSET Q PAVEMENT 7.0' LT : ~~RT~~
2.9' TO LT EDGE PAVEMENT
 STATION: 409+80.12

HORZ. DATUM: NAD83 (2011) GEOID: 2012A
 GRID: NORTHING: 667625.752 EASTING: 1774925.194



RECORD:
 FD P.K./WASHER
 4/24/00, MB
 SET P.K./WASHER
 6-14-00, MDB
 SET MAG NAIL
 REF97
 5-9-18, JFO
 SET MAG/WASHER
 4-3-20, JFO



O.D.O.T. DISTRICT 2 SURVEY OFFICE

PERSONNEL

REFERENCE NO. 97

SHEET 64 OF 96

NOTES M. BARNHISEL

H.C. M. CANTERBURY

R.C. M. BARNHISEL

DATE 4-24-00

WEATHER Sunny

TEMP. +60°F

DRAWN BY: K. MOSER

ROUTE SR. 105

COUNTY OTTAWA

TOWNSHIP HARRIS

SECTION 11

T6 N R 14 E

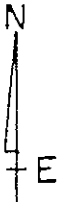
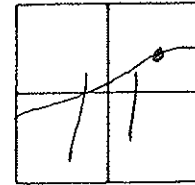
TYPE MONUMENT PK / WASHER

ON SURFACE - ~~BELOW~~ SURFACE

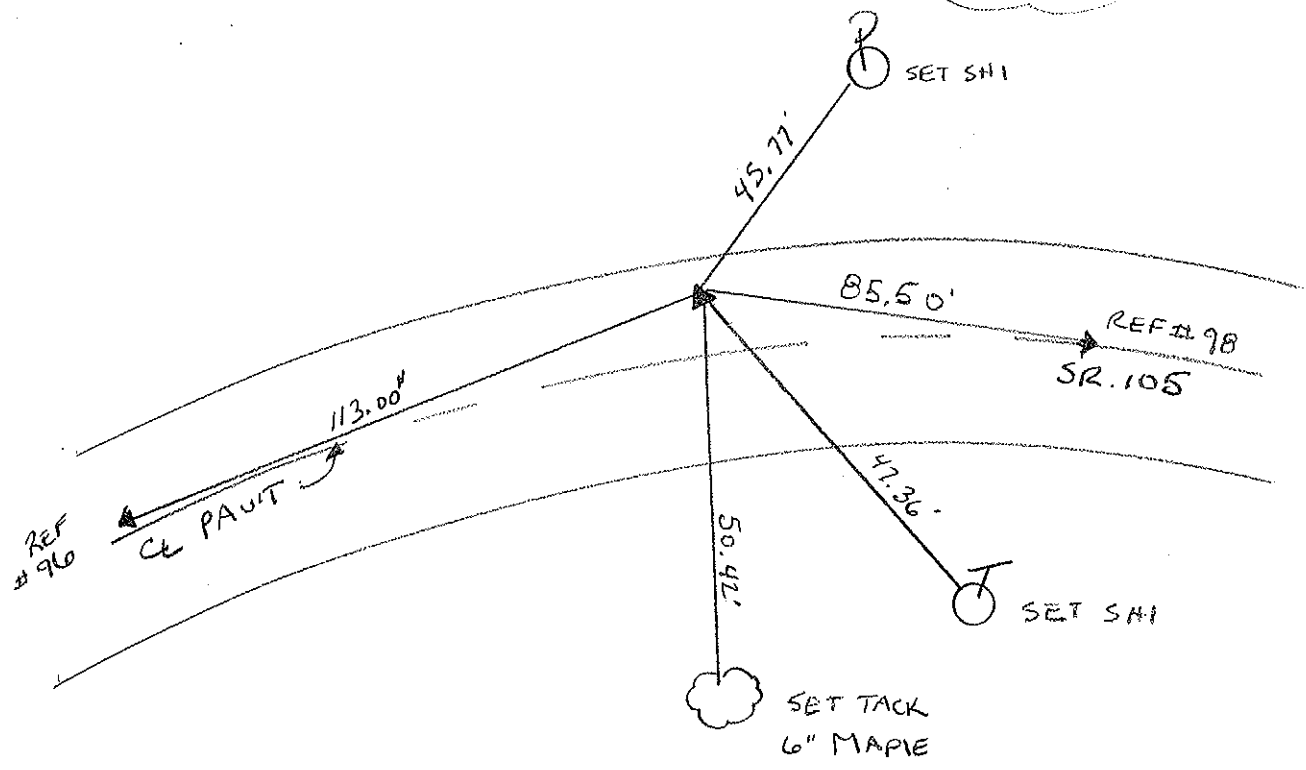
LEFT - ~~C PAINT~~ RIGHT 7.0'

2.9 TO LT. EDGE PAVEMENT

S.L.M. 410 + 88



RESET PK / WASHER
6-14-00
MOB



O.D.O.T. DISTRICT 2 SURVEY OFFICE

PERSONNEL _____ REFERENCE NO. 97 SHEET _____ OF _____

NOTES Cronin DRAWN 6/02/88

H.C. Ripple DATE 8/20/87 ROUTE # 105

R.C. Barbour WEATHER sunny COUNTY Ottawa

Geyman TEMP. 75° TOWNSHIP Harris

SECTION 11

T. 6 N. R. 14 E.

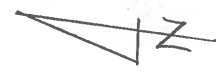
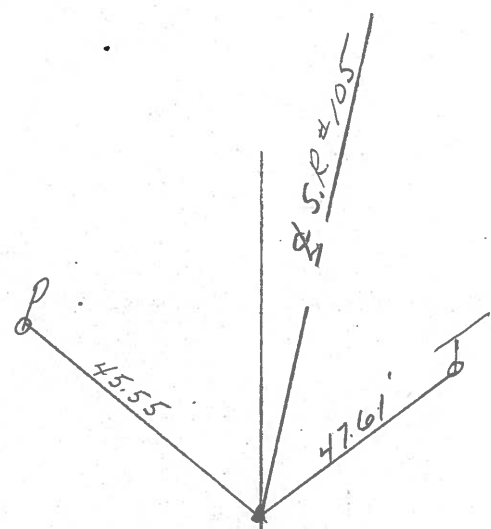
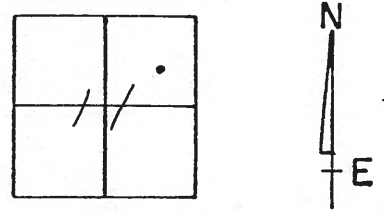
TYPE MONUMENT P.K. & washer

ON SURFACE - BELOW _____

LEFT - & PAV'T. - RIGHT 7 1/2'

TO _____ EDGE PAVEMENT

S.L.M. 410 + 04



P.K. atop P.K. below

P.K. & washer

PERSONNEL TITLE PERSONNEL TITLE

COUNTY Ottawa DATE 5-3-74

S. R. 105 WEATHER Fair

SEC. 11 TEMP. 60°

DESCRIPTION Harris Twp. JOB NO.

LEFT CENTER LINE RIGHT

