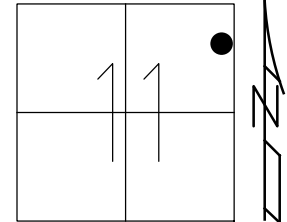


O.D.O.T. DISTRICT 2 SURVEY OFFICE (USE ONLY)

PERSONNEL _____ REFERENCE NO. 99 SHEET 10 OF 42
 NOTES RHOADES DATE 8-1-2019 ROUTE SR 105
 H.C. O'DONNELL WEATHER SUNNY COUNTY OTTAWA
 R.C. MILLER TEMP. 74°F TOWNSHIP HARRIS
 DWG BY AUBLE PID 92131 SECTION 11
 T 6 N R 14 E

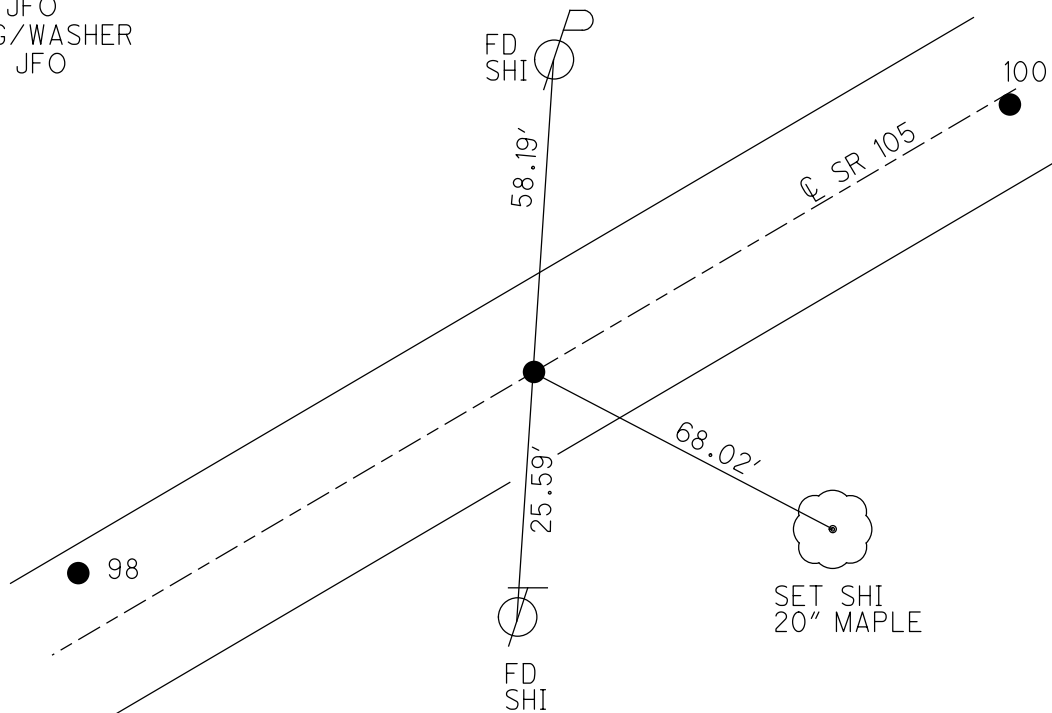
TYPE MONUMENT P.K./WASHER
 ON SURFACE - ~~BELOW~~ ON
 OFFSET ☐ PAVEMENT ON LT : RT
10.5' TO LT EDGE PAVEMENT
 STATION: 411+67.7

HORZ.DATUM: NAD83 (2011) GEOID: 2012A
 GRID: NORTHING: 667662.002 EASTING: 1775109.191



RECORD:
 FD P.K.NAIL
 4/24/00, MB
 SET P.K./WASHER
 6-14-00, MDB
 FD P.K./WASHER
 REF99
 5-9-18, JFO
 SET MAG/WASHER
 4-3-20, JFO

DIST. 98-99= 102.04'
 99-100= 132.73'



O.D.O.T. DISTRICT 2 SURVEY OFFICE

PERSONNEL

REFERENCE NO. 99

SHEET 66 OF 96

NOTES M. BARNHISEL

H.C. M. CANTERBURY

R.C. M. BARNHISEL

Drawn By: K. Moser

DATE 4-24-00

WEATHER Sunny

TEMP. 76.0°F

ROUTE S.R. 105

COUNTY OTTAWA

TOWNSHIP HARRIS

SECTION 11

T6 N R 14 E

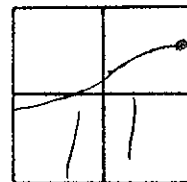
TYPE MONUMENT PK NAIL

ON SURFACE - BELOW ON SURFACE

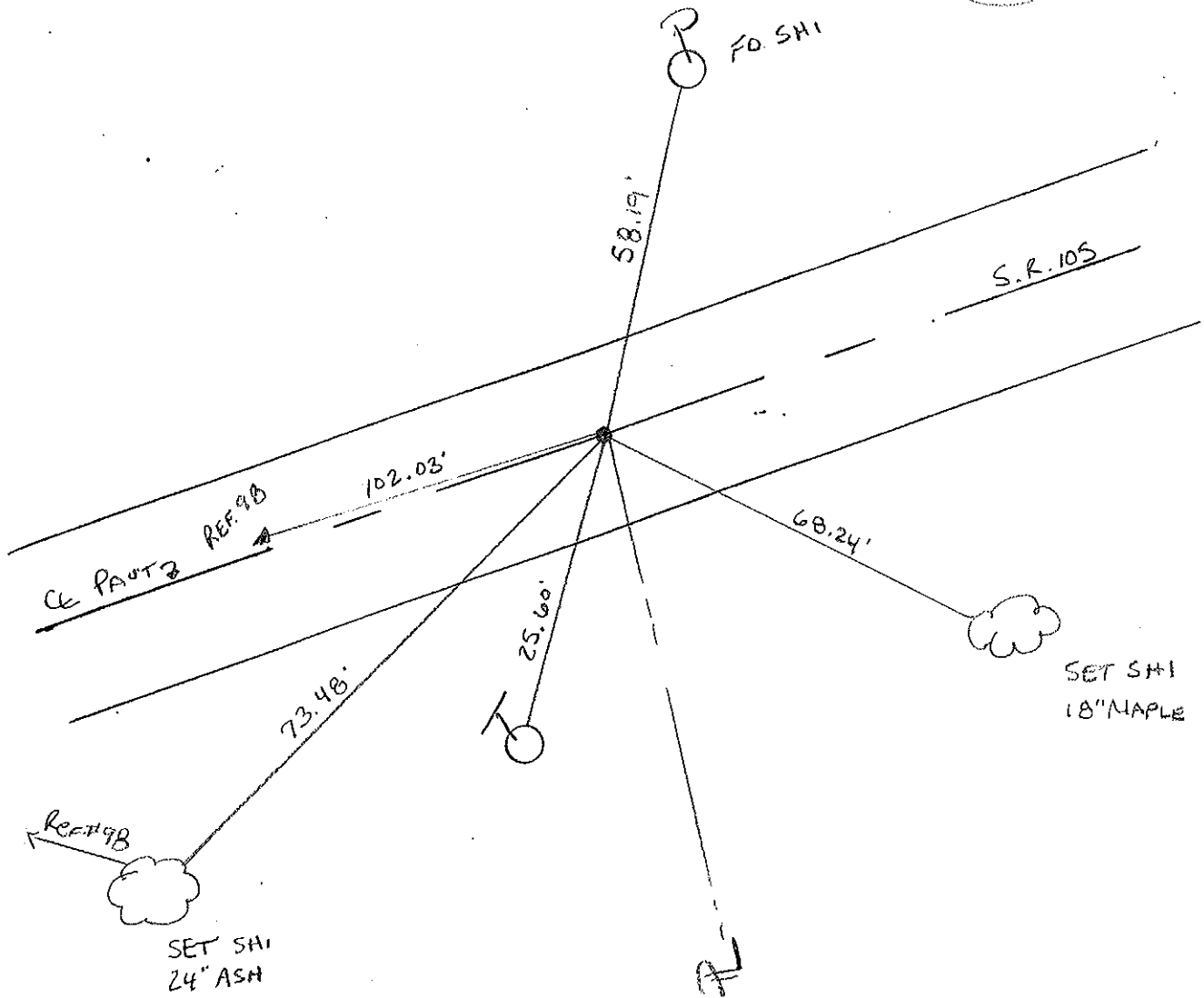
~~LEFT~~ - Q PAVT. - RIGHT Q PAVT.

10.5' TO LT. EDGE PAVEMENT

S.L.M. 412+75



RESET PK WASHER
6-14-00
MDB



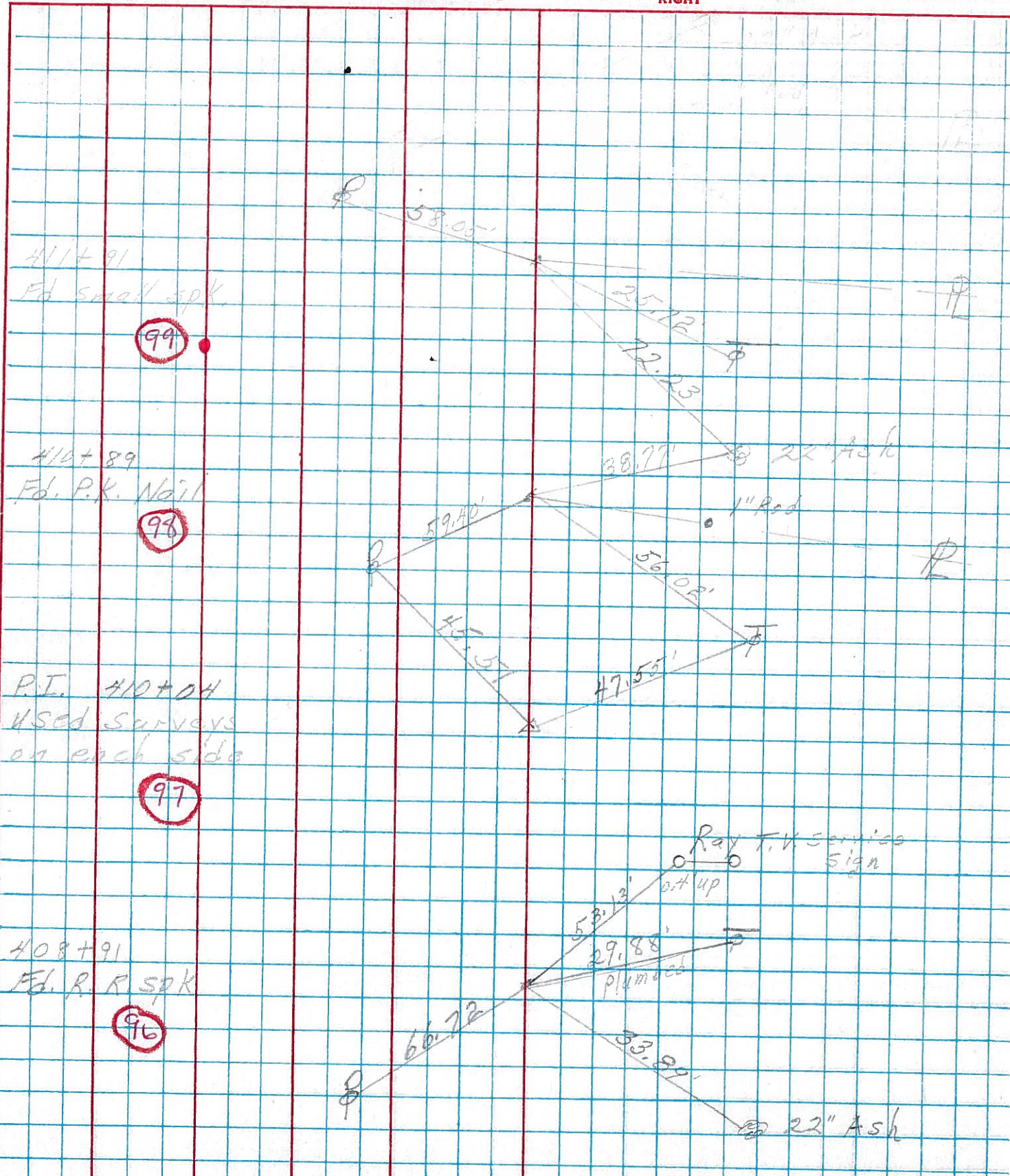
PERSONNEL TITLE PERSONNEL TITLE

COUNTY Ottawa DATE 5-3-74

S. R. 105 WEATHER Fair

SEC. 11 TEMP. 60°

DESCRIPTION Harris Twp. LEFT CENTER LINE RIGHT JOB NO.



PERSONNEL TITLE PERSONNEL TITLE

COUNTY Ottawa DATE 7-8-68

Schneider

Mosser

Barbour

Potts

S. R. 105

WEATHER cloudy-Hot

SEC. San. Co. Line to Oak Harbor

TEMP. 90°

DESCRIPTION

Ties for Central Points

JOB NO.

LEFT

CENTER LINE

RIGHT

