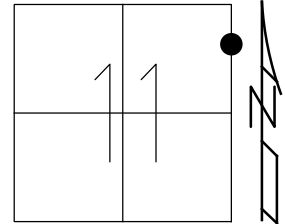


O.D.O.T. DISTRICT 2 SURVEY OFFICE (USE ONLY)

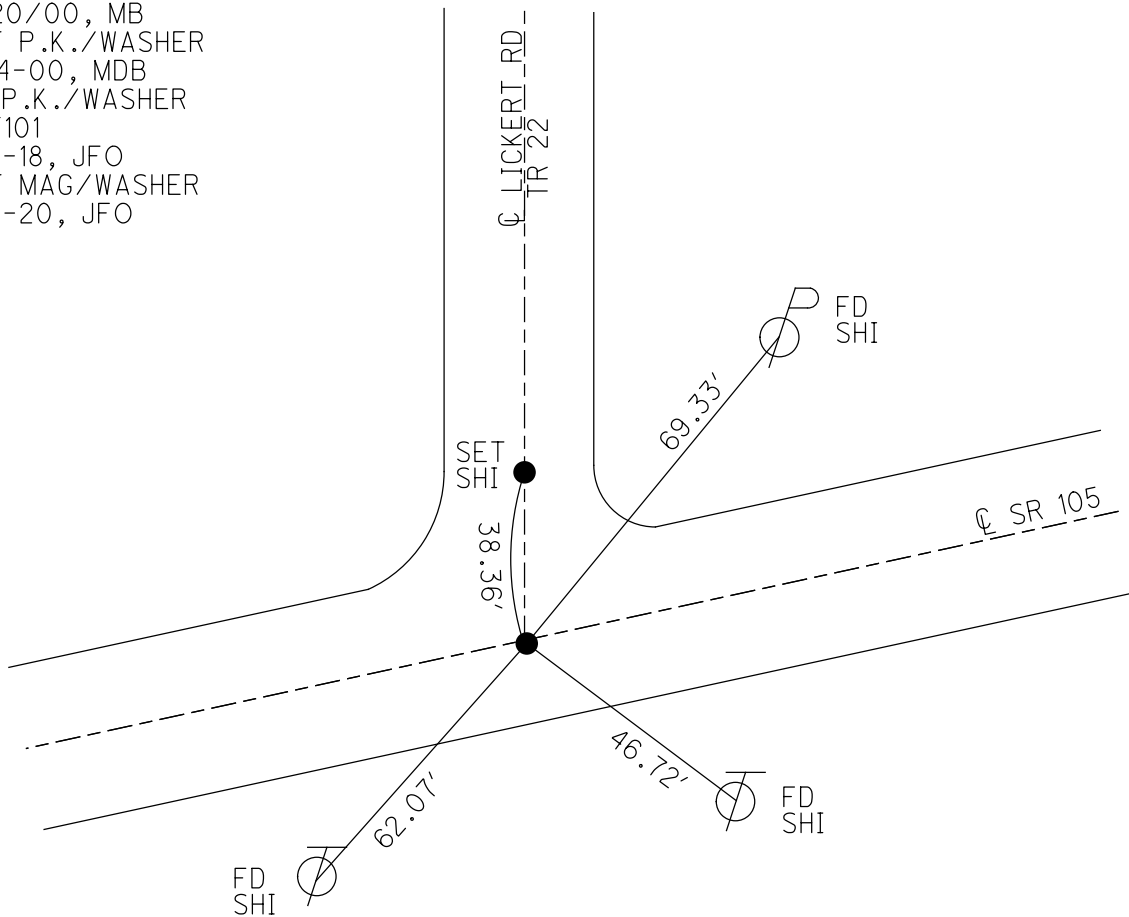
PERSONNEL _____ REFERENCE NO. 101 SHEET 12 OF 42
 NOTES RHOADES DATE 8-1-2019 ROUTE SR 105
 H.C. O'DONNELL WEATHER SUNNY COUNTY OTTAWA
 R.C. MILLER TEMP. 74°F TOWNSHIP HARRIS
 DWG BY AUBLE PID 92131 SECTION 11
 T 6 N R 14 E

TYPE MONUMENT P.K./WASHER
 ON SURFACE - ~~BELOW~~ ON
 OFFSET C PAVEMENT 0.3' ~~RT~~ : RT
10.5' TO RT EDGE PAVEMENT
 STATION: 421+53.43

HORZ. DATUM: NAD83 (2011) GEOID: 2012A
 GRID: NORTHING: 667841.870 EASTING: 1776078.810



RECORD:
 FD P.K./WASHER
 4/20/00, MB
 SET P.K./WASHER
 6-14-00, MDB
 FD P.K./WASHER
 REF101
 5-8-18, JFO
 SET MAG/WASHER
 4-8-20, JFO



O.D.O.T. DISTRICT 2 SURVEY OFFICE

PERSONNEL

REFERENCE NO. 101

SHEET 68 OF 96

NOTES M. BALNHISEL

H.C. M. CANTERBURY

R.C. M. BALNHISEL

DRAWN BY: K. MOSER

DATE 4-24-00

WEATHER SUNNY

TEMP. +60°F

ROUTE S.R. 105

COUNTY OTTAWA

TOWNSHIP HARRIS

SECTION 11

T. 6 N R. 14 E

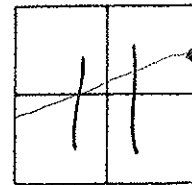
TYPE MONUMENT PK / WASHER

ON SURFACE -- BELOW SURFACE

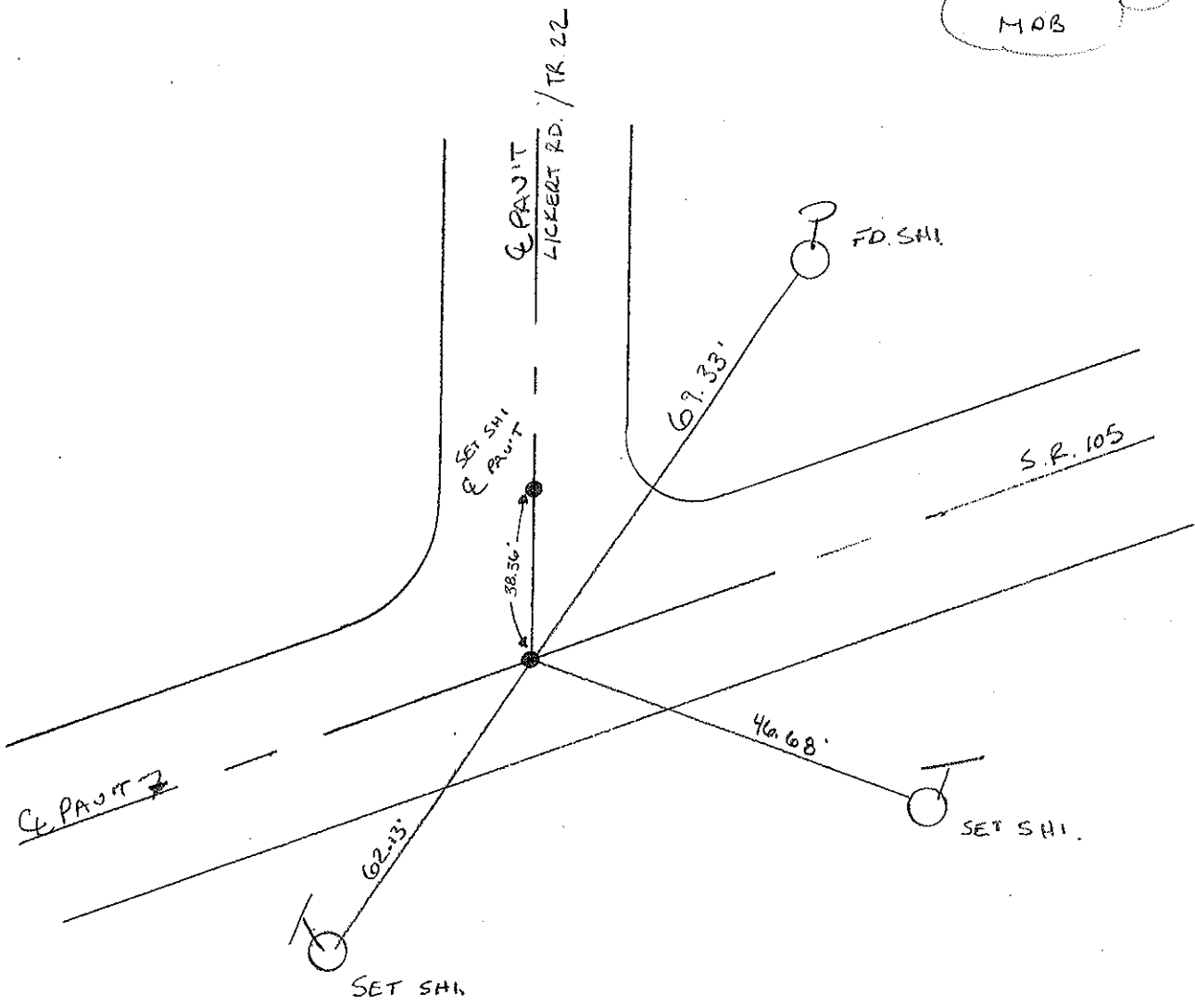
LEFT - C. PAV'T. - RIGHT 0.3' RT.

10.5 TO RT. EDGE PAVEMENT

S.L.M. 422 + 61



RESET PK WASHER
 6-14-00
 MOB



O.D.O.T. DISTRICT 2 SURVEY OFFICE

PERSONNEL

REFERENCE NO. 101

SHEET OF

NOTES Cronin

DRAWN 6/06/88

H.C. Ripple

DATE 8/20/87

ROUTE #105

R.C. Barbour

WEATHER sunny

COUNTY Ottawa

Geyman

TEMP. 75°

TOWNSHIP Harris

SECTION 11

T 6 N R 17 E

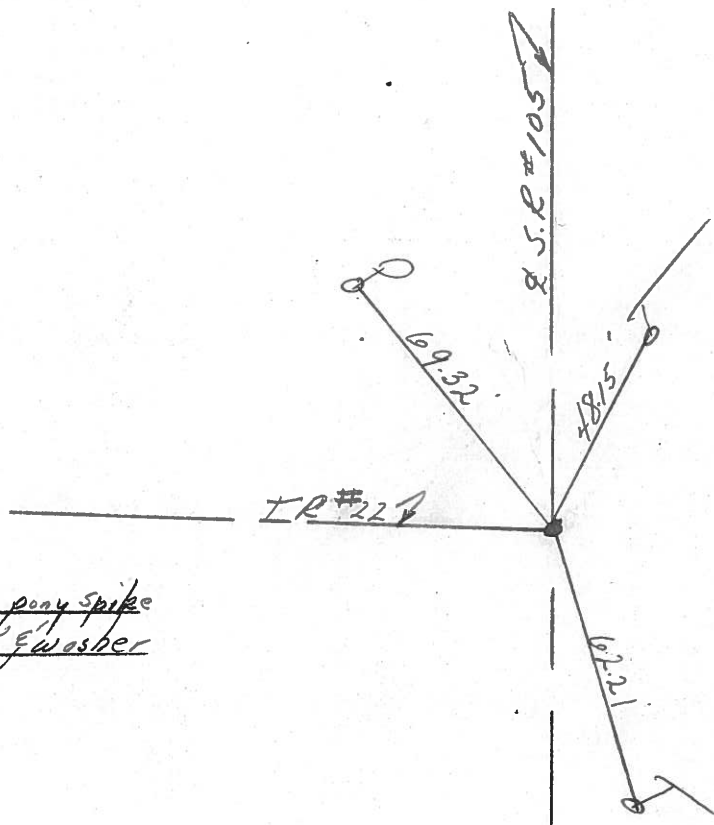
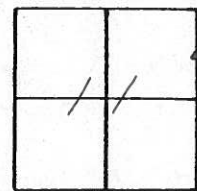
TYPE MONUMENT P.K. & washer

ON SURFACE - BELOW

LEFT - PAV'T. - RIGHT

 TO EDGE PAVEMENT

S.L.M. 421+77



P.K. at top pony spike
below P.K. & washer

PERSONNEL TITLE PERSONNEL TITLE

COUNTY Ottawa

DATE 5-7-74

S. R. 105

WEATHER cool

SEC. 11 & 12

TEMP. 40°

DESCRIPTION Harris Twp.

JOB NO.

LEFT

CENTER LINE

RIGHT

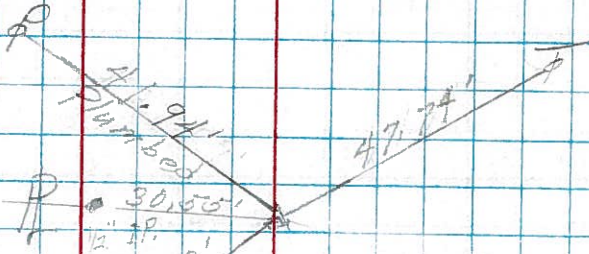
P.I.
Ed. small spk.
434+12.5

102

garage

1 story
Res.

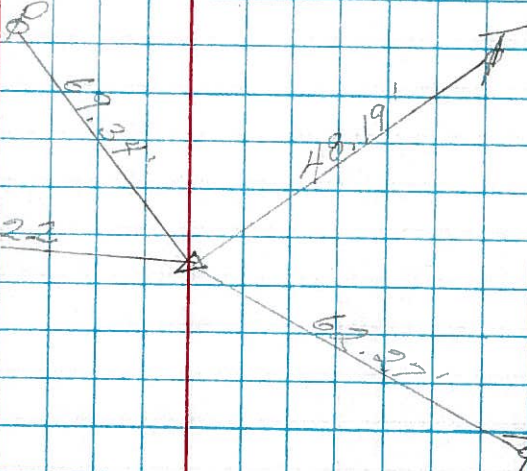
Cor. stone
of step



421+77
Ed. small spk.

101

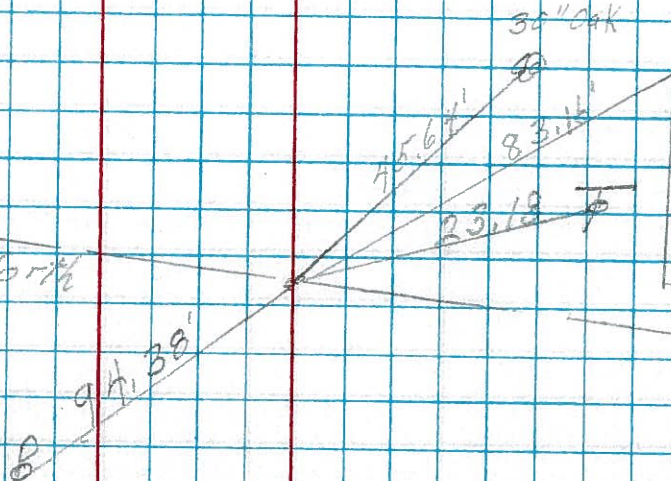
Co. Rd. # 22
North



Ed. small spk. North
413+24

100

Top and Block
1 story
Res.



PERSONNEL TITLE PERSONNEL TITLE

Schneider
Mosser
Barbour
Potts

COUNTY Ottawa DATE 7-8-68
S. R. 105 WEATHER cloudy-Ho.
SEC. Sample Line to Oak Harbor TEMP. 90°

DESCRIPTION Ties for Control Points LEFT CENTER LINE RIGHT JOB NO.

