

O.D.O.T. DISTRICT 2 SURVEY OFFICE (USE ONLY)

PERSONNEL

REFERENCE NO. 109

SHEET 20 OF 42

NOTES RHOADES DATE 8-5-2019

ROUTE SR 105

H.C. O'DONNELL WEATHER SUNNY

COUNTY OTTAWA

R.C. MILLER TEMP. 74°F

TOWNSHIP HARRIS

SECTION 12

DWG BY AUBLE PID 92131

T 6 N R 14 E

TYPE MONUMENT MAG NAIL

ON SURFACE - ~~BELOW~~ ON

OFFSET \oslash PAVEMENT 0.4' LT : ~~RT~~

9.7' TO LT EDGE PAVEMENT

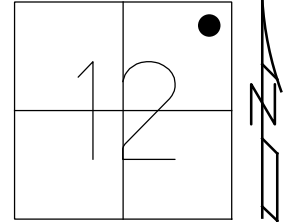
STATION: 465+13.02

HORZ.DATUM: NAD83 (2011)

GEOID: 2012A

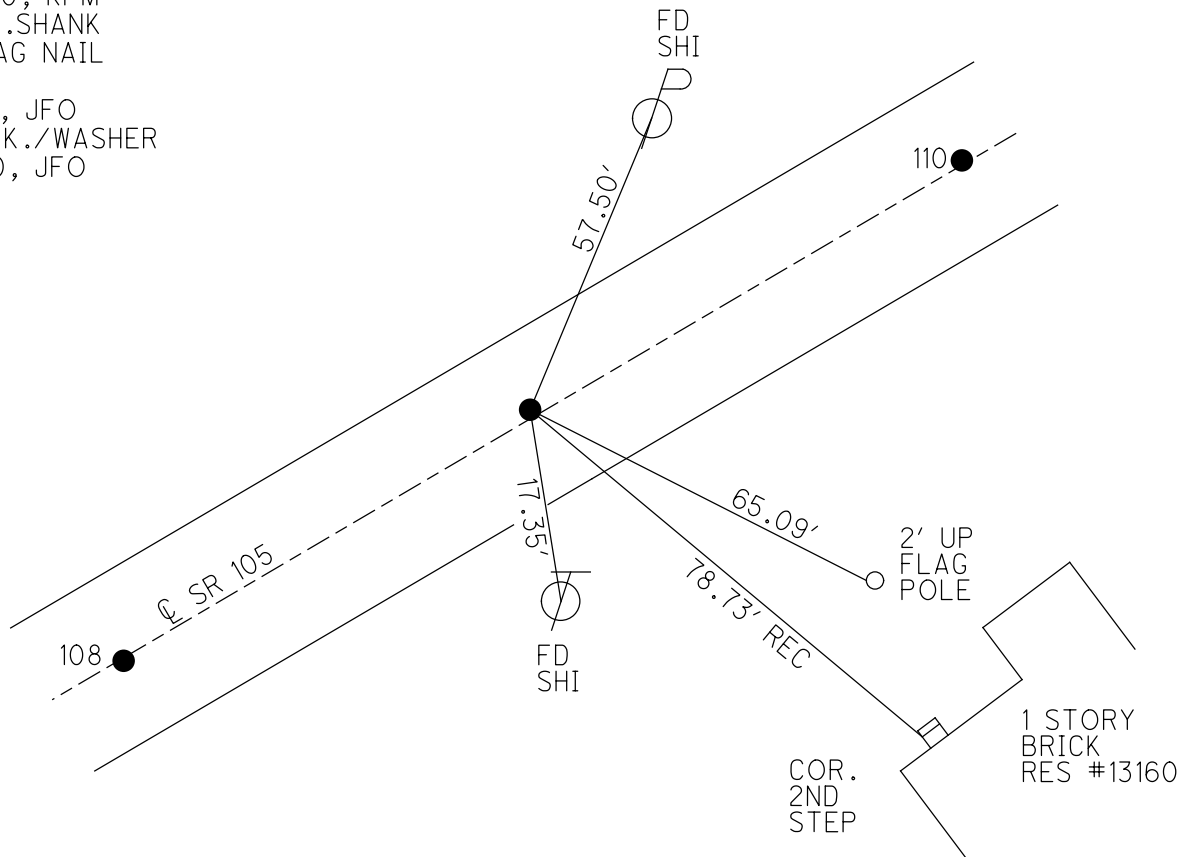
GRID: NORTHING: 668735.663

EASTING: 1780396.594



RECORD:
 FD LG.R.R.SPIKE
 4/24/00, MB
 SET P.K./WASHER
 6-13-00, KPM
 FD P.K.SHANK
 SET MAG NAIL
 REF109
 5-8-18, JFO
 SET P.K./WASHER
 4-8-20, JFO

DIST .108-109 = 97.05'
 109-110 = 96.90'



O.D.O.T. DISTRICT 2 SURVEY OFFICE

PERSONNEL

REFERENCE NO. 109

SHEET 76 OF 96

NOTES M. BARNHISEL

H.C. M. CAUTERBURY

R.C. M. BARNHISEL

DRAWN BY: K. MOSER

DATE 4-24-00

WEATHER Sunny

TEMP. +60°F

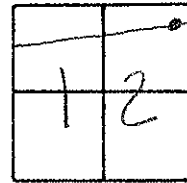
ROUTE S.R. 105

COUNTY OTTAWA

TOWNSHIP HARRIS

SECTION 12

T6 N R 14 E



TYPE MONUMENT LG. RR. SPIKE

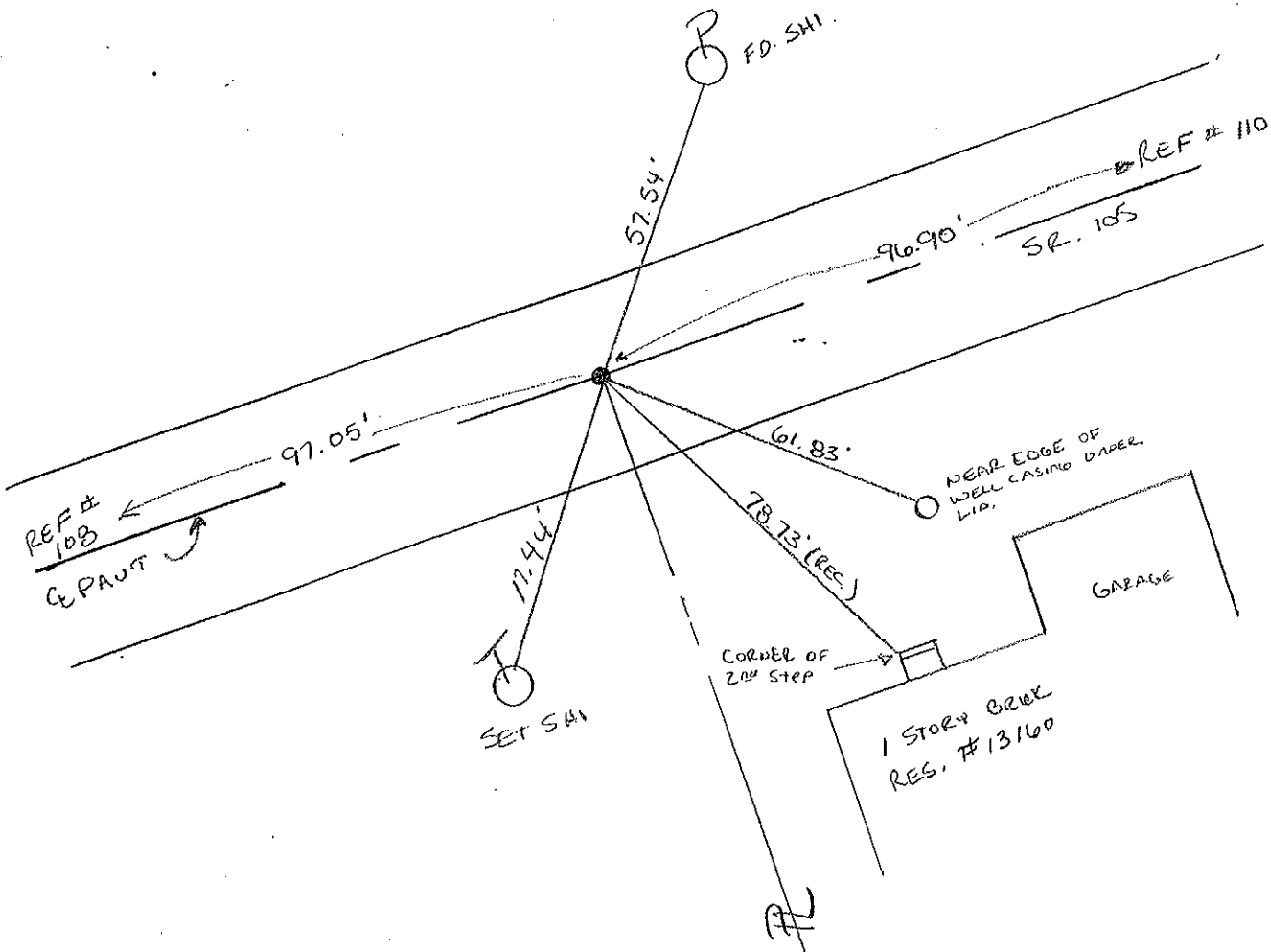
ON SURFACE - ~~BELOW~~ SURFACE

LEFT - PAV'T. - RIGHT 0.4' LT.

9.7 TO LT. EDGE PAVEMENT

S.L.M. 466 + B1

RESET PK/WASHER
 6-13-00
 K.P.M.



PERSONNEL TITLE PERSONNEL TITLE

COUNTY Ottawa DATE 5-21-74

S. R. 105 WEATHER Fair

SEC. 12 TEMP 75°

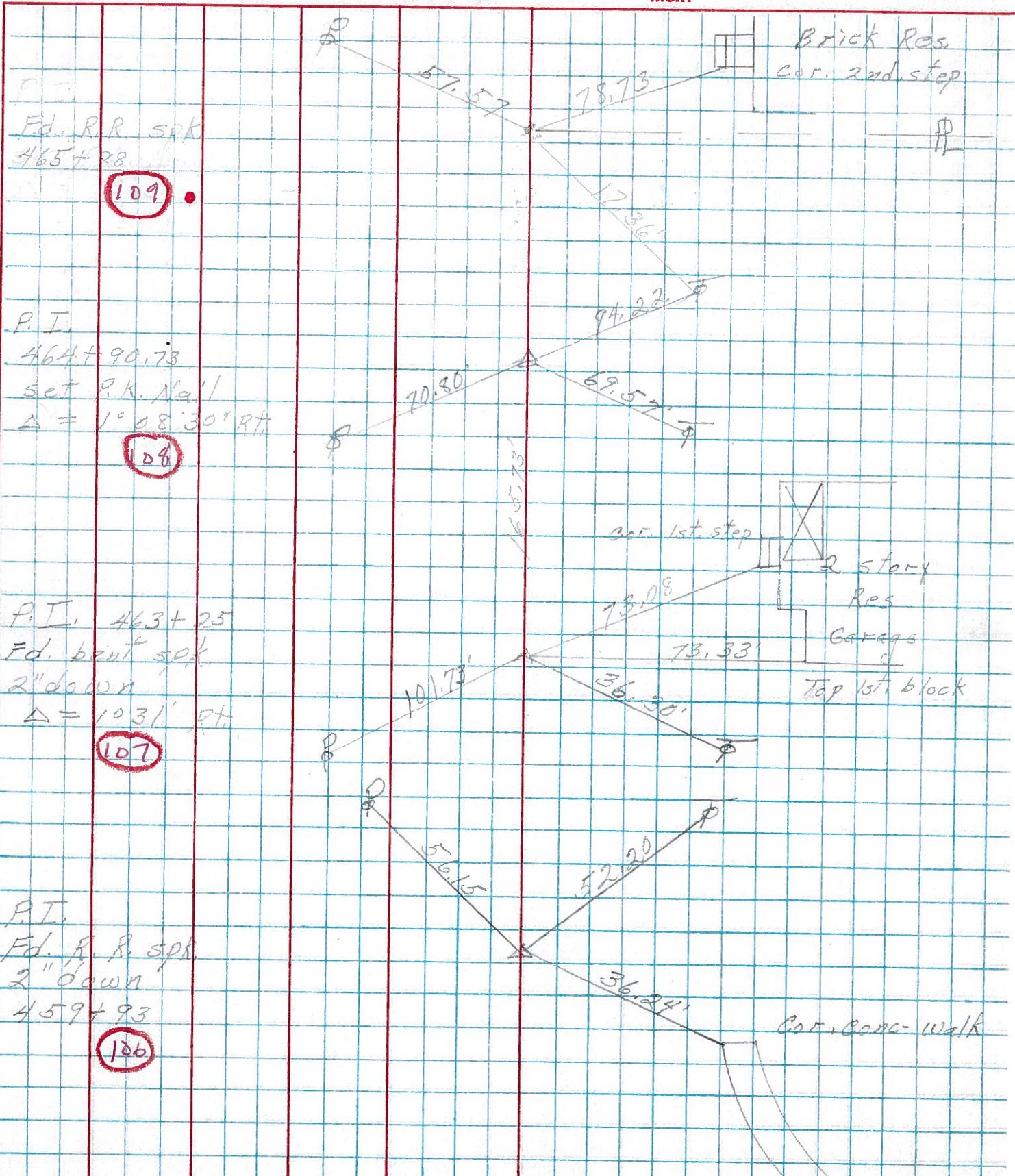
DESCRIPTION Harris Twp.

JOB NO.

LEFT

CENTER LINE

RIGHT



P.I.
Ed. R. R. spk
465+28

109

P.I.
464+90.73
set P.K. Nail
Δ = 1° 08' 30" RT

108

P.I. 463+25
Ed. bent spk
2" down
Δ = 1031' RT

107

P.I.
Ed. R. R. spk
2" down
459+93

106

Brick Res.
cor. 2nd. step

cor. 1st. step
2 story Res
Garage
Top 1st. block

Cor. Garage-walk