

O.D.O.T. DISTRICT 2 SURVEY OFFICE (USE ONLY)

PERSONNEL

REFERENCE NO. 119

SHEET 31 OF 42

NOTES RHOADES

DATE 8-5-2019

ROUTE SR 105

H.C. O'DONNELL

WEATHER SUNNY

COUNTY OTTAWA

R.C. MILLER

TEMP. 74°F

TOWNSHIP HARRIS

SECTION 6

DWG BY MAHLER PID 92131

T 6 N R 14 E

TYPE MONUMENT P.K.SHANK

ON SURFACE - ~~BELOW~~ ON

OFFSET ☉ PAVEMENT 1.9' LT : RT

8.6' TO RT EDGE PAVEMENT

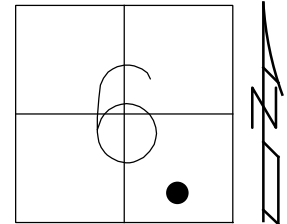
STATION: 510+32.33

HORIZ.DATUM: NAD83 (2011)

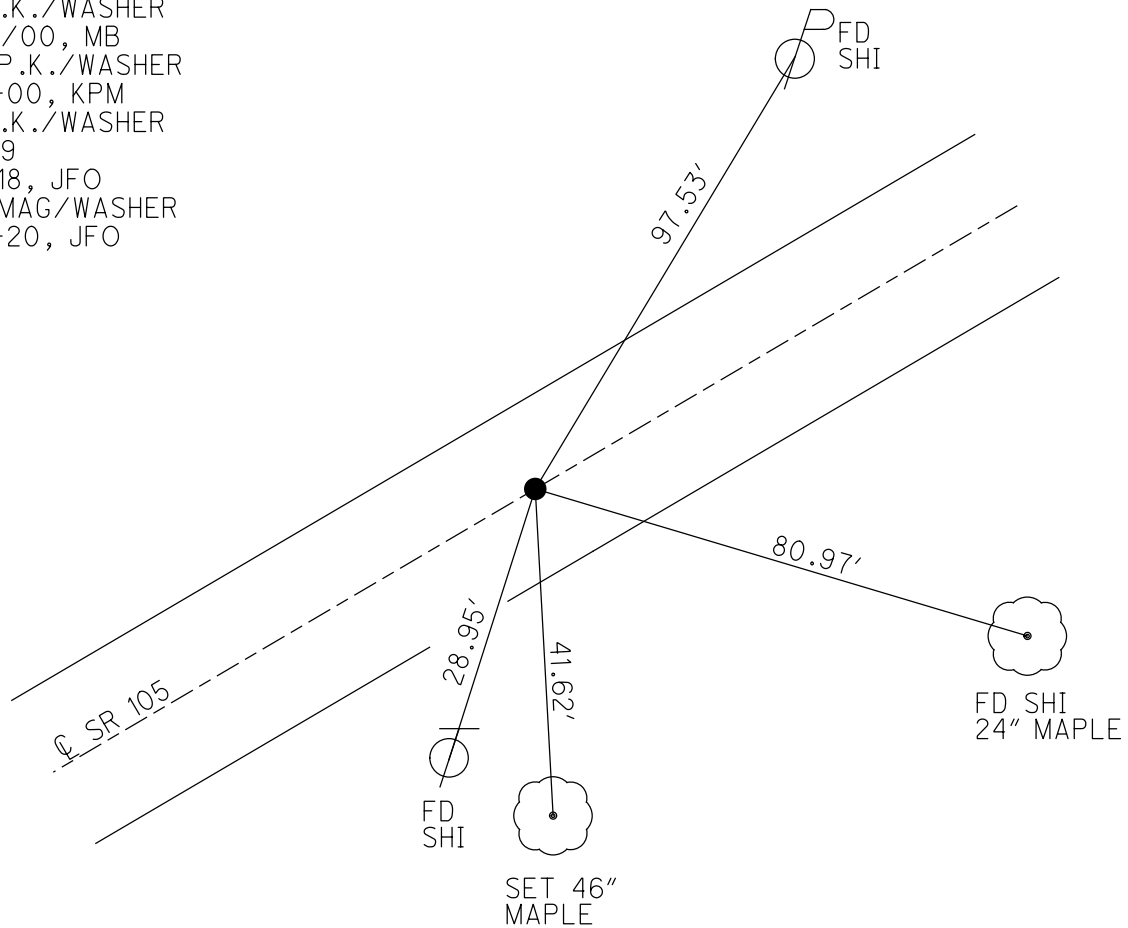
GEOID: 2012A

GRID: NORTHING: 699740.343

EASTING: 1784716.219



RECORD:
 FD P.K./WASHER
 4/26/00, MB
 SET P.K./WASHER
 6-13-00, KPM
 FD P.K./WASHER
 REF119
 5-9-18, JFO
 SET MAG/WASHER
 4-13-20, JFO



O.D.O.T. DISTRICT 2 SURVEY OFFICE

PERSONNEL

REFERENCE NO. 119

SHEET 88 OF 96

NOTES K. Moser

H.C. M. CAUTELBURY

R.C. M. BARNHISEL

DATE 4-26-00

WEATHER SUNNY

TEMP. +60°F

ROUTE S.R. 105

COUNTY OTTAWA

TOWNSHIP SALEM

SECTION 6

T6 N R 14 E

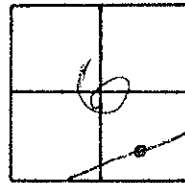
TYPE MONUMENT PK / WASHER

ON SURFACE - ~~BELOW~~ SURFACE

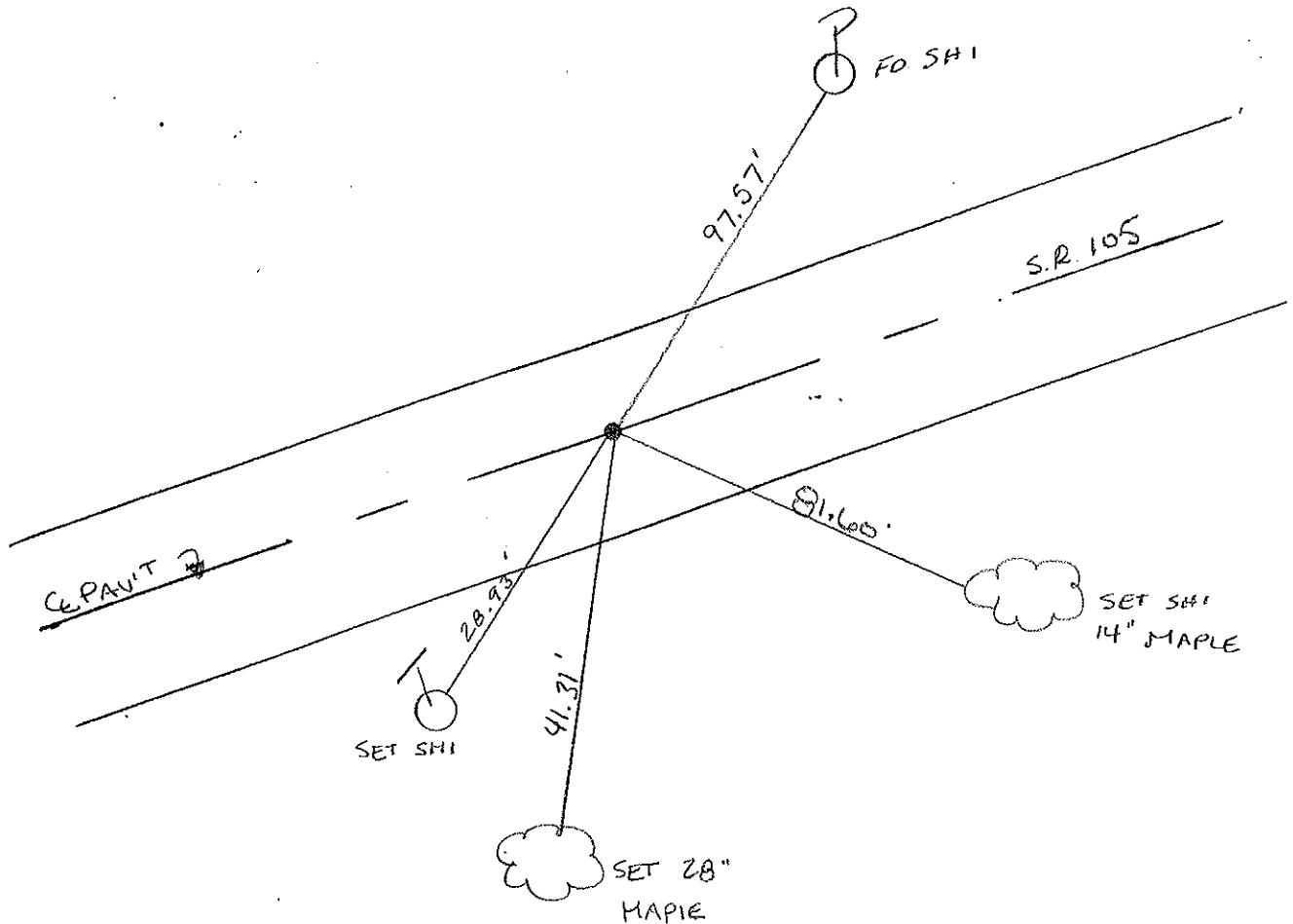
~~LEFT - C. PAV'T.~~ - RIGHT 1.9 RT.

8.6 TO RT. EDGE PAVEMENT

S.L.M. 511474



RESET PK / WASHER
6-13-00
K.P.M



O.D.O.T. DISTRICT 2 SURVEY OFFICE

PERSONNEL

REFERENCE NO. 119

SHEET OF

NOTES Cronin

DRAWN 6/06/88

H.C. Ripple

DATE 8/25/87

ROUTE #105

R.C. Barbour

WEATHER overcast

COUNTY Ottawa

Geyman

TEMP. 53°

TOWNSHIP Salem

SECTION 6

T 6 N R 17 E

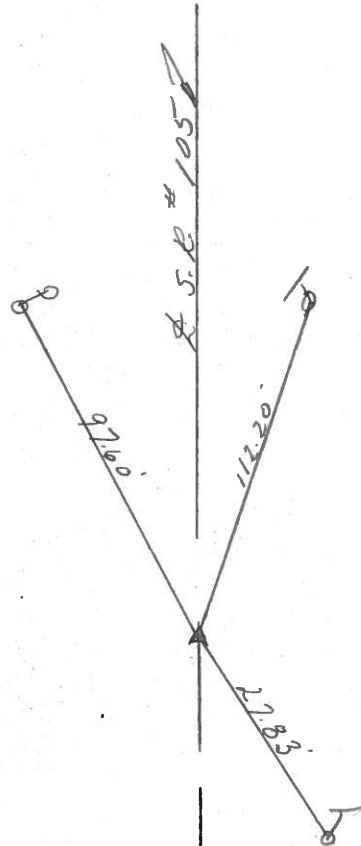
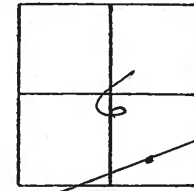
TYPE MONUMENT P.K. & washer

ON SURFACE - BELOW

LEFT - PAV'T. - RIGHT 2'

 TO EDGE PAVEMENT

S.L.M. 510 + 57.50



P.K. atop P.K. below
P.K. & washer

PERSONNEL TITLE PERSONNEL TITLE

COUNTY Ottawa DATE 6-12-74

S. R. 105 WEATHER Fair

SEC. 6 TEMP. 70°

DESCRIPTION Salem Twp. LEFT CENTER LINE RIGHT JOB NO.

