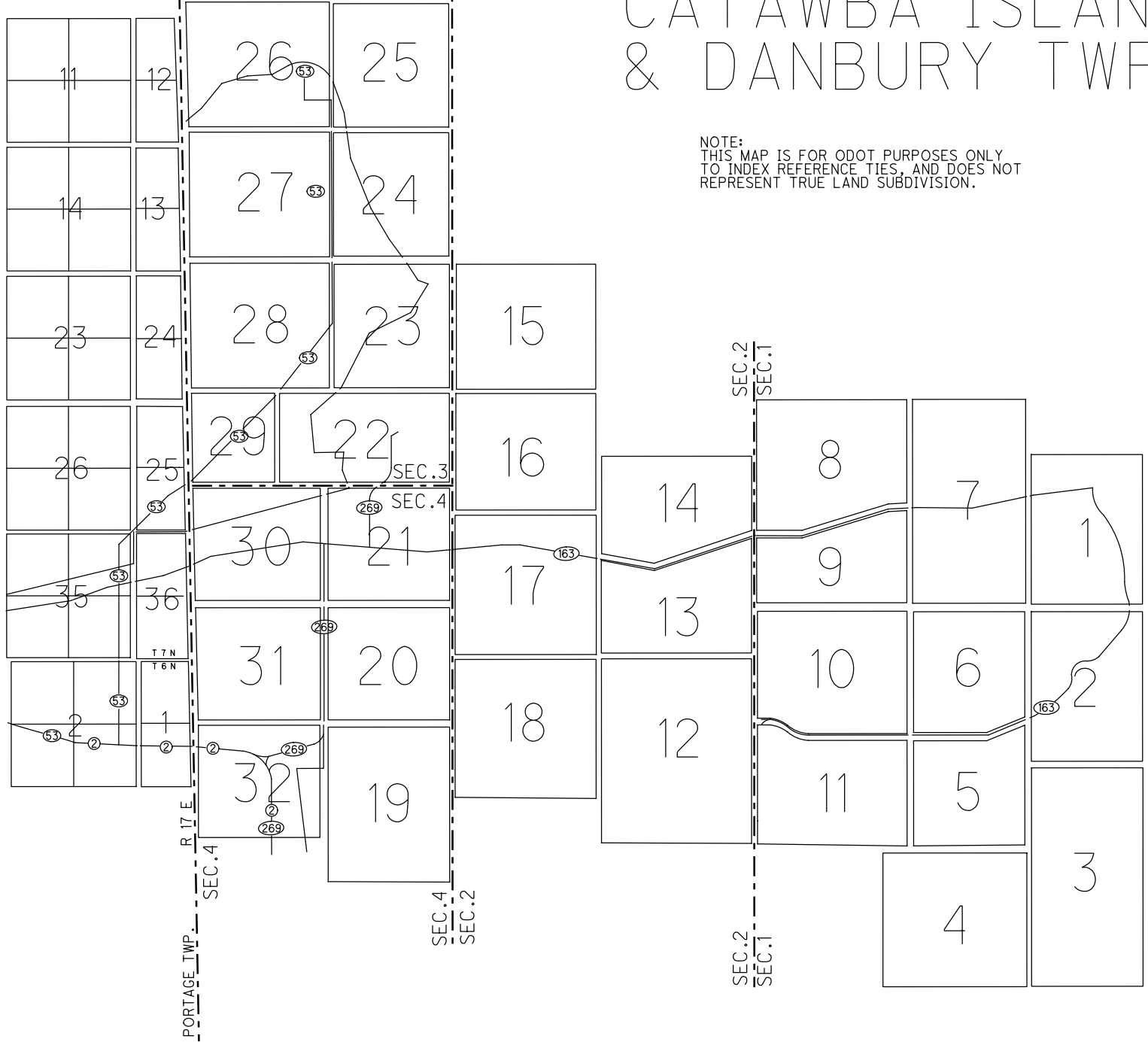


CONNECTICUT WESTERN RESERVE LINE



# CATAWBA ISLAND & DANBURY TWP

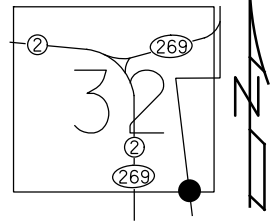
NOTE:  
THIS MAP IS FOR ODOT PURPOSES ONLY  
TO INDEX REFERENCE TIES, AND DOES NOT  
REPRESENT TRUE LAND SUBDIVISION.

O.D.O.T. DISTRICT 2 SURVEY OFFICE (USE ONLY)

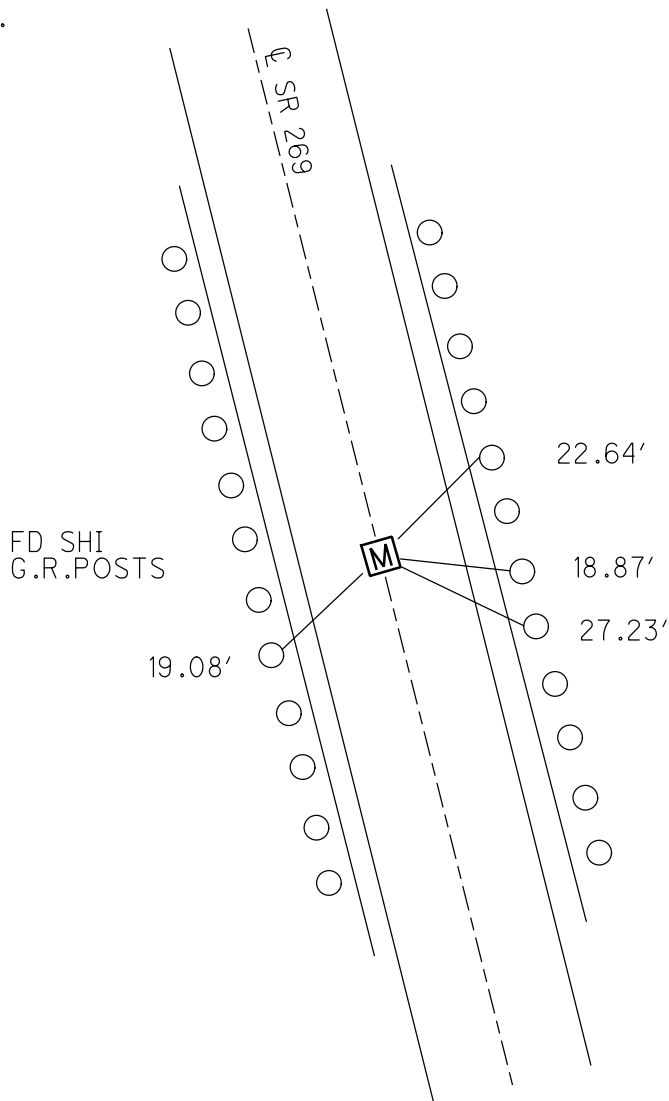
PERSONNEL \_\_\_\_\_ REFERENCE NO. 1 SHEET 1 OF 7  
 NOTES LUMBREZER DATE 4/29/11 ROUTE OLD SR 269  
 H.C. MOSER WEATHER CLOUDY COUNTY OTTAWA  
 R.C. LUMBREZER TEMP. 62° TOWNSHIP DANBURY  
 \_\_\_\_\_ SECTION 4-32  
 \_\_\_\_\_

TYPE MONUMENT MONBOX  
 ON SURFACE - ~~BELOW~~ ON  
 LEFT - ☉ PAV'T - RIGHT ON  
15.5' TO RT EDGE PAVEMENT  
 S.L.M. 30+00  
 GRID: NORTHING: 664328.601 EASTING: 1877830.410

NOTE:  
THIS MAP IS FOR ODOT PURPOSES ONLY.  
TO INDEX REFERENCE TIES, AND DOES NOT  
REPRESENT TRUE LAND SUBDIVISION.



RECORD: P.O.T.  
 REF 1 269  
 RJL, 4/29/11

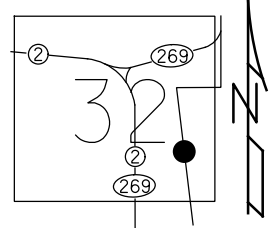


O.D.O.T. DISTRICT 2 SURVEY OFFICE (USE ONLY)

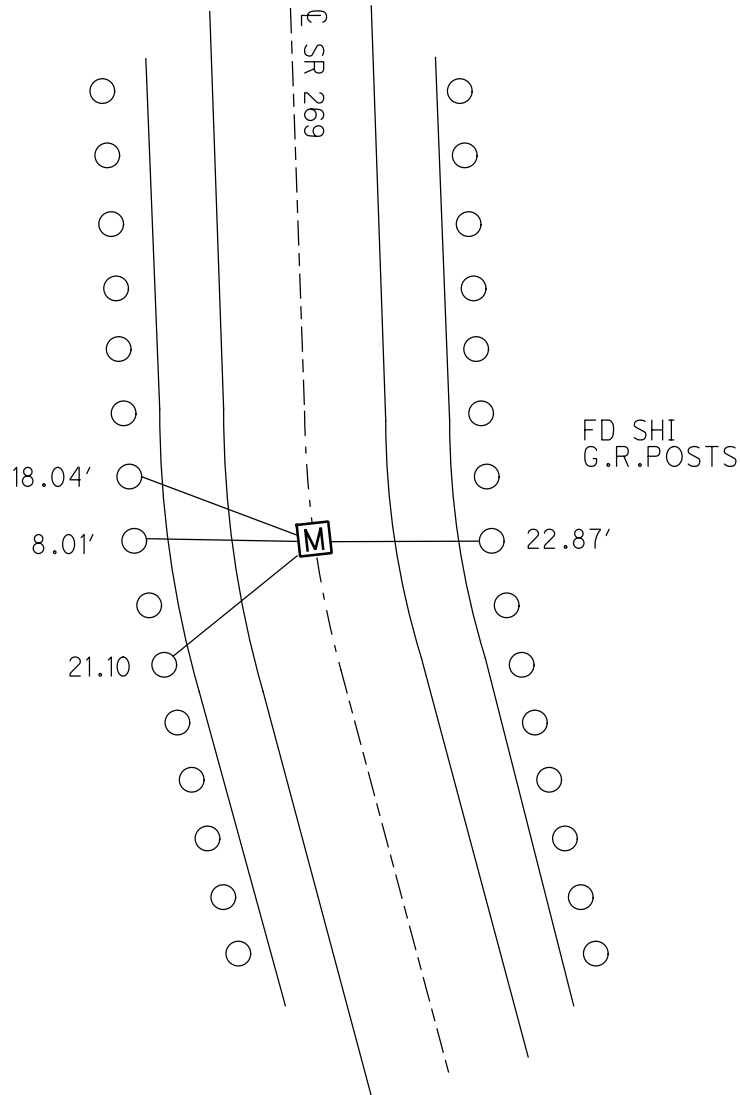
PERSONNEL	REFERENCE NO.	2	SHEET	2	OF	7
NOTES	LUMBREZER	DATE	4/29/11	ROUTE	OLD SR 269	
H.C.	MOSER	WEATHER	CLOUDY	COUNTY	OTTAWA	
R.C.	LUMBREZER	TEMP.	62°	TOWNSHIP	DANBURY	
				SECTION	4-32	

NOTE:  
THIS MAP IS FOR ODOT PURPOSES ONLY.  
TO INDEX REFERENCE TIES, AND DOES NOT  
REPRESENT TRUE LAND SUBDIVISION.

TYPE MONUMENT MONBOX  
 ON SURFACE - ~~BELOW~~ ON  
 LEFT - ☉ PAV'T - ~~RIGHT~~ 8.5'  
3.1' TO LT EDGE PAVEMENT  
 S.L.M. 59+53.23  
 GRID: NORTHING: 667207.492 EASTING: 1877177.339



RECORD: P.I.  
 STA = 59+53.23  
 $\Delta = 11^{\circ}07' 48''$  RT  
 REF 2 269  
 RJL, 4/29/11

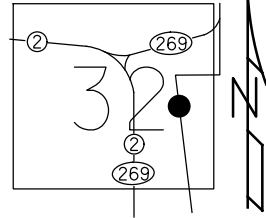


O.D.O.T. DISTRICT 2 SURVEY OFFICE (USE ONLY)

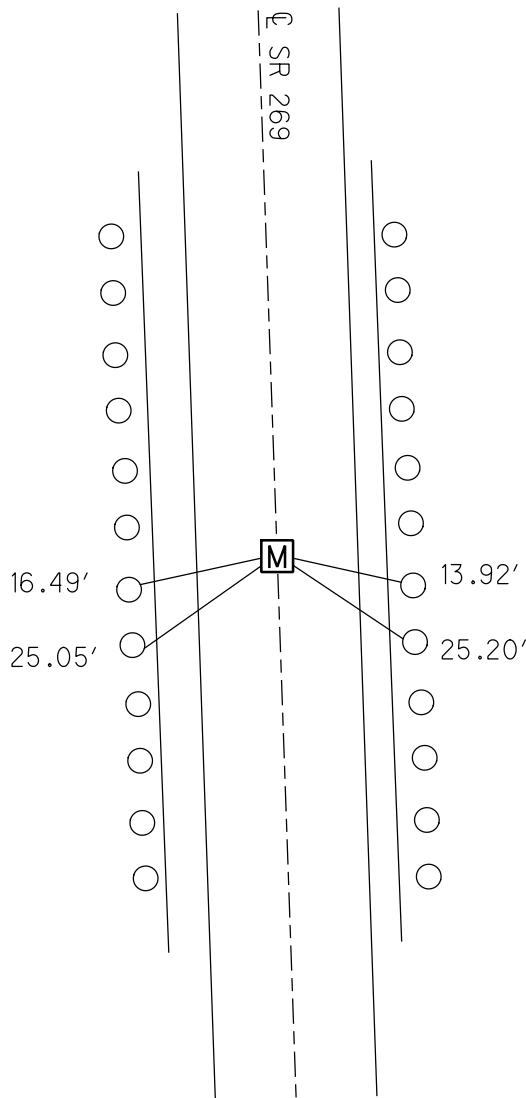
PERSONNEL \_\_\_\_\_ REFERENCE NO. 3 SHEET 3 OF 7  
 NOTES LUMBREZER DATE 4/29/11 ROUTE OLD SR 269  
 H.C. MOSER WEATHER CLOUDY COUNTY OTTAWA  
 R.C. LUMBREZER TEMP. 62° TOWNSHIP DANBURY  
 \_\_\_\_\_ SECTION 4-32  
 \_\_\_\_\_

TYPE MONUMENT MONBOX  
 ON SURFACE - ~~BELOW~~ ON  
 LEFT - ☉ PAV'T - RIGHT ON  
10.7' TO RT EDGE PAVEMENT  
 S.L.M. 69+00  
 GRID: NORTHING: 668155.985 EASTING: 1877149.435

NOTE- THIS MAP IS FOR ODOT PURPOSES ONLY TO INDEX REFERENCE TIES, AND DOES NOT REPRESENT TRUE LAND SUBDIVISION.



RECORD: P.O.T.  
 REF 3 269  
 RJL, 4/29/11



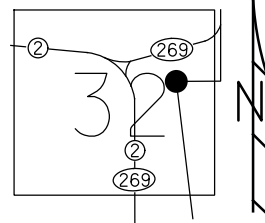
FD SHI  
 G.R.POSTS

O.D.O.T. DISTRICT 2 SURVEY OFFICE (USE ONLY)

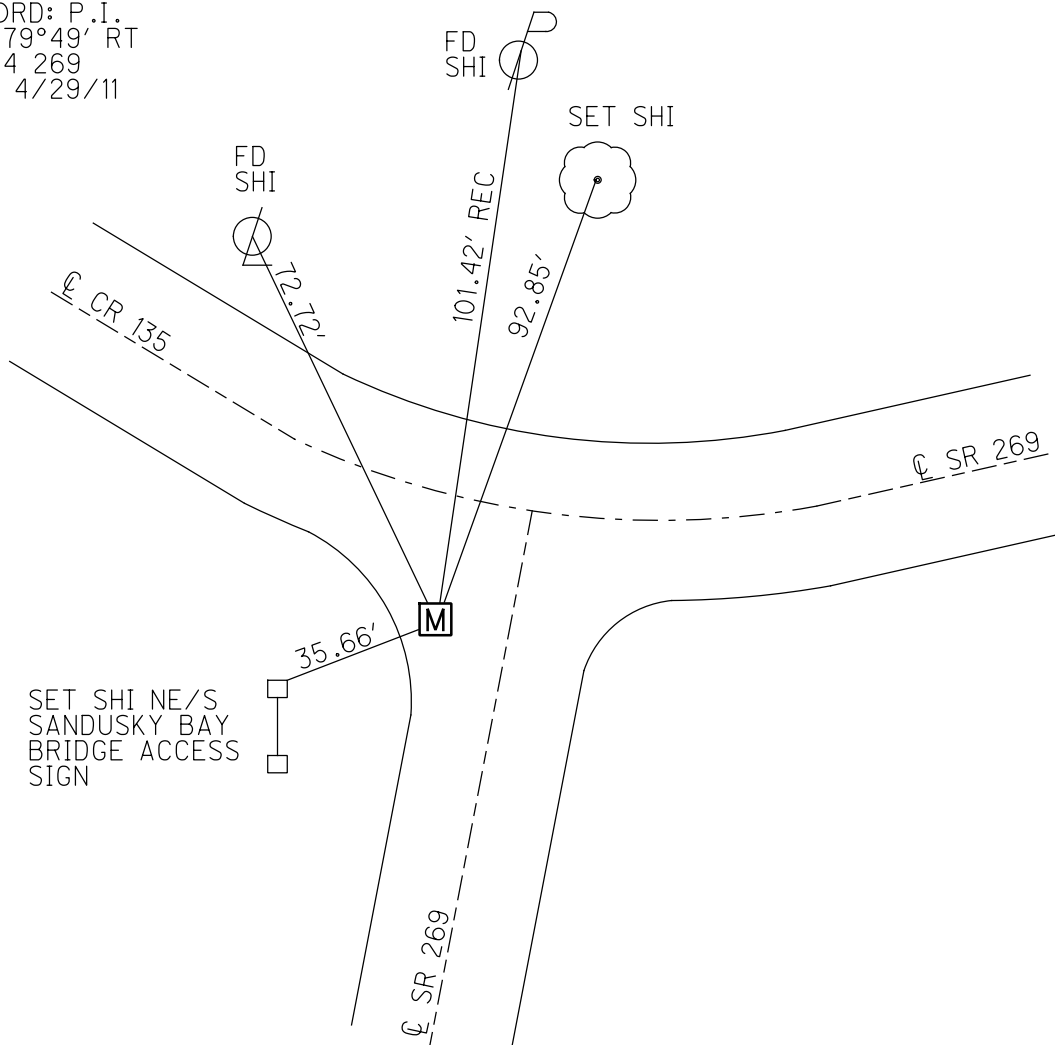
PERSONNEL	REFERENCE NO. <u>4</u>	SHEET <u>4</u> OF <u>7</u>
NOTES <u>LUMBREZER</u>	DATE <u>4/29/11</u>	ROUTE <u>OLD SR 269</u>
H.C. <u>MOSER</u>	WEATHER <u>CLOUDY</u>	COUNTY <u>OTTAWA</u>
R.C. <u>LUMBREZER</u>	TEMP. <u>62°</u>	TOWNSHIP <u>DANBURY</u>
		SECTION <u>4-32</u>

NOTE:  
THIS MAP IS FOR ODOT PURPOSES ONLY  
TO INDEX REFERENCE TIES, AND DOES NOT  
REPRESENT TRUE LAND SUBDIVISION.

TYPE MONUMENT MONBOX  
 ON SURFACE - ~~BELOW~~ ON  
 LEFT - CL PAV'T - ~~RIGHT~~ 18.5'  
- TO - EDGE PAVEMENT  
 S.L.M. 77+47.01, (26.3' S. OF CL CR 135)  
 GRID: NORTHING: 669002.507 EASTING: 1877124.281



RECORD: P.I.  
 $\Delta = 79^{\circ}49' RT$   
 REF 4 269  
 RJL, 4/29/11



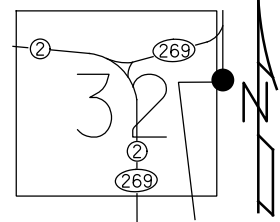
O.D.O.T. DISTRICT 2 SURVEY OFFICE (USE ONLY)

PERSONNEL \_\_\_\_\_ REFERENCE NO. 5 SHEET 5 OF 7  
 NOTES RHOADES DATE 4/20/21 ROUTE OLD SR 269  
 H.C. O'DONNELL WEATHER FAIR COUNTY OTTAWA  
 R.C. BALBAUGH TEMP. 41° TOWNSHIP DANBURY  
 SECTION 4-32  
 DWG BY RHOADES PID 95758 & 114099

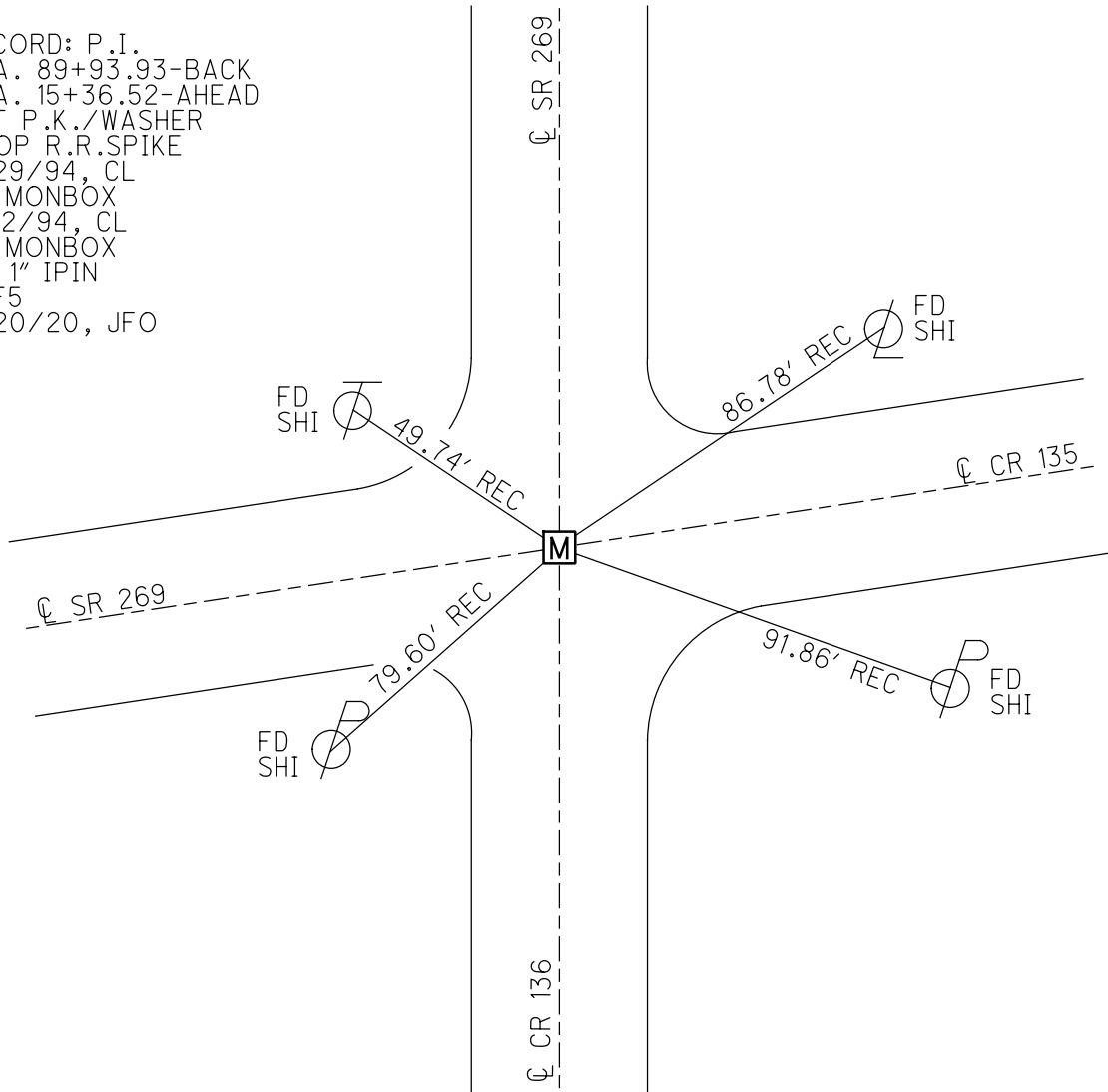
TYPE MONUMENT MONBOX W/ 1" IPIN  
 ON SURFACE - ~~BELOW~~ ON  
 OFFSET Q PAVEMENT ON \_\_\_\_\_ LT : RT  
 \_\_\_\_\_ TO \_\_\_\_\_ EDGE PAVEMENT  
 STATION: 89+93.93-BACK, 15+36.52-AHEAD

HORIZ.DATUM: NAD83 2011 GEOID: NAVD88 2012A  
 GRID: NORTHING: 669268.176 EASTING: 1878391.352

NOTE:  
 THIS MAP IS FOR ODOT PURPOSES ONLY.  
 TO INDEX REFERENCE TIES, AND DOES NOT  
 REPRESENT TRUE LAND SUBDIVISION.



RECORD: P.I.  
 STA. 89+93.93-BACK  
 STA. 15+36.52-AHEAD  
 SET P.K./WASHER  
 ATOP R.R.SPIKE  
 8/29/94, CL  
 FD MONBOX  
 12/2/94, CL  
 FD MONBOX  
 W/ 1" IPIN  
 REF5  
 4/20/20, JFO



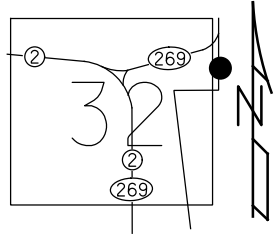
O.D.O.T. DISTRICT 2 SURVEY OFFICE (USE ONLY)

PERSONNEL \_\_\_\_\_ REFERENCE NO. 5 A SHEET 6 OF 7  
 NOTES RHOADES DATE 4/20/21 ROUTE SR 269  
 H.C. O'DONNELL WEATHER FAIR COUNTY OTTAWA  
 R.C. BALBAUGH TEMP. 41° TOWNSHIP DANBURY  
 SECTION 4-26  
 DWG BY RHOADES PID 95758 & 114099

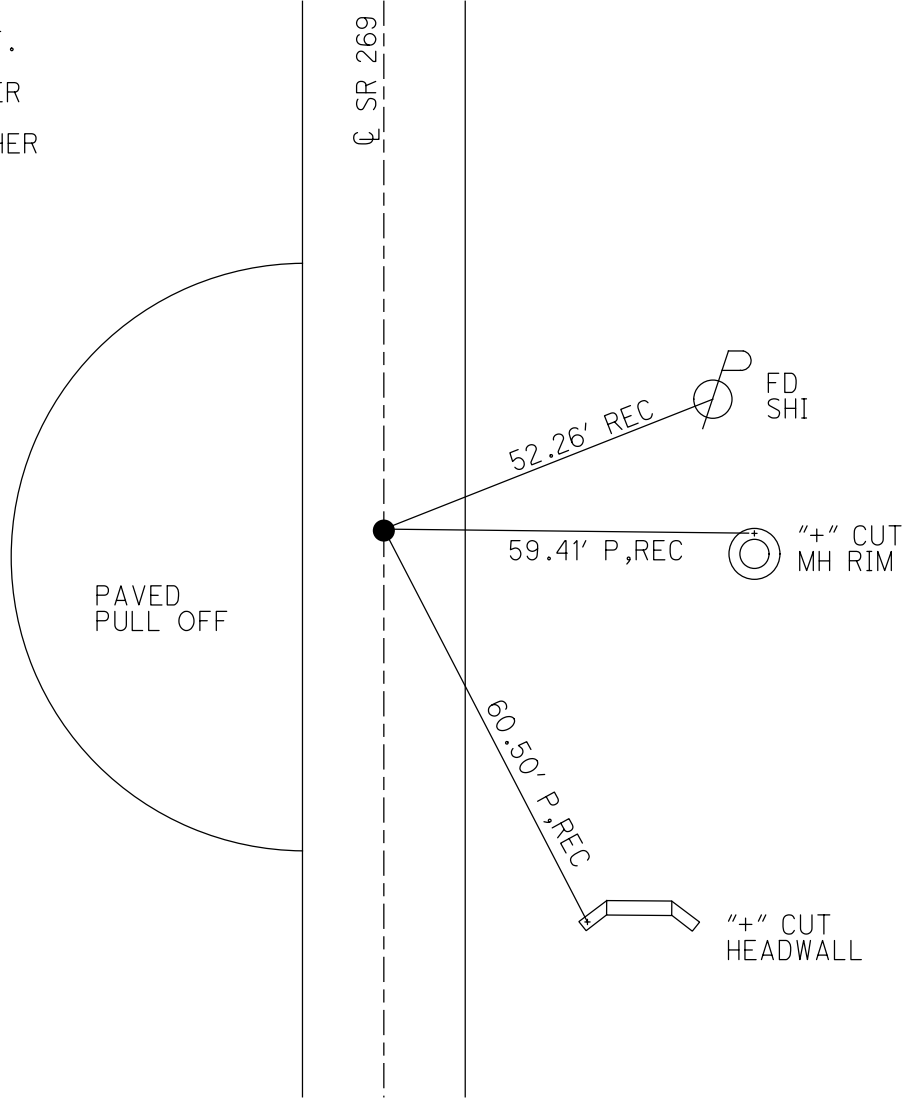
TYPE MONUMENT P.K.NAIL  
 ON SURFACE - ~~BELOW~~ ON  
 OFFSET  $\varnothing$  PAVEMENT ON LT : RT  
- TO - EDGE PAVEMENT  
 STATION: 24+39

HORZ.DATUM: NAD83 2011 GEOID: NAVD88 2012A  
 GRID: NORTHING: 670162.607 EASTING: 1878365.858

NOTE:  
THIS MAP IS FOR ODOT PURPOSES ONLY.  
TO INDEX REFERENCE TIES, AND DOES NOT  
REPRESENT TRUE LAND SUBDIVISION.



RECORD: P.O.T.  
 STA.24+30.73  
 FD P.K./WASHER  
 3/28/00, CL  
 SET P.K./WASHER  
 6/16/00, CL  
 FD P.K.NAIL  
 REFA5  
 4/20/20, JFO



O.D.O.T. DISTRICT 2 SURVEY OFFICE (USE ONLY)

PERSONNEL \_\_\_\_\_ REFERENCE NO. 6 SHEET 7 OF 7  
 NOTES RHOADES DATE 11/17/21 ROUTE SR 269  
 H.C. O'DONNELL WEATHER CLOUDY COUNTY OTTAWA  
 R.C. SLUSHER TEMP. 50° TOWNSHIP DANBURY  
 SECTION 4-26  
 DWG BY RHOADES PID 114099

TYPE MONUMENT TIE CROSSING

ON SURFACE - ~~BELOW~~ ON

OFFSET 9.5' TO LT EDGE PAVEMENT LT : RT

STATION: 29+10

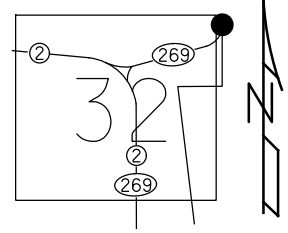
HORZ.DATUM: NAD83 2011

GEOID: NAVD88 2012A

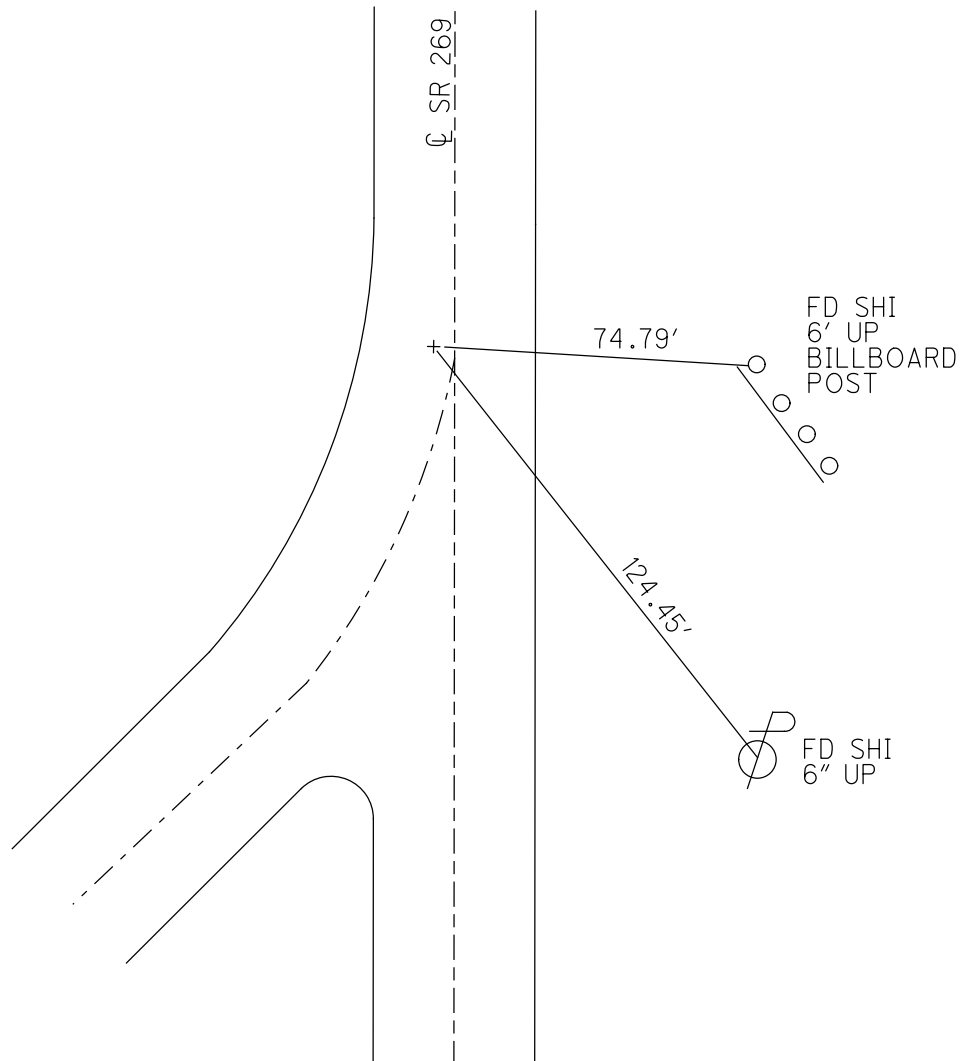
GRID: NORTHING: 670631.417

EASTING: 1878350.745

NOTE:  
THIS MAP IS FOR ODOT PURPOSES ONLY  
TO INDEX REFERENCE TIES, AND DOES NOT  
REPRESENT TRUE LAND SUBDIVISION.



RECORD: P.I.  
 STA. 29+00.58  
 FD P.K./WASHER  
 3/28/00, CL  
 SET P.K./WASHER  
 6/16/00, CL  
 D.N.F.  
 SHOT TIE XING  
 REF6  
 11/17/21, JFO





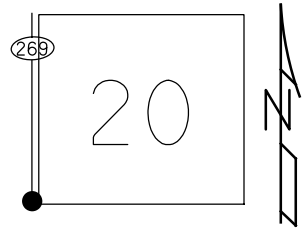
O.D.O.T. DISTRICT 2 SURVEY OFFICE (USE ONLY)

PERSONNEL \_\_\_\_\_ REFERENCE NO. 7 SHEET 1 OF 9  
 NOTES NIESE DATE 9/30/21 ROUTE SR 269  
 H.C. AUBLE WEATHER SUNNY COUNTY OTTAWA  
 R.C. NIESE TEMP. 67° TOWNSHIP DANBURY  
 SECTION 4-20  
 DWG BY WHITAKER PID 95758

TYPE MONUMENT MAG/WASHER  
 ON SURFACE - ~~BELOW~~ ON  
 OFFSET  $\text{C}$  PAVEMENT 8.2' ~~±~~ : RT  
5.5' TO RT EDGE PAVEMENT  
 STATION: 131+50

HORZ. DATUM: NAD83(2011) GEOID: 2018  
 GRID: NORTHING: 671985.600 EASTING: 1878318.082

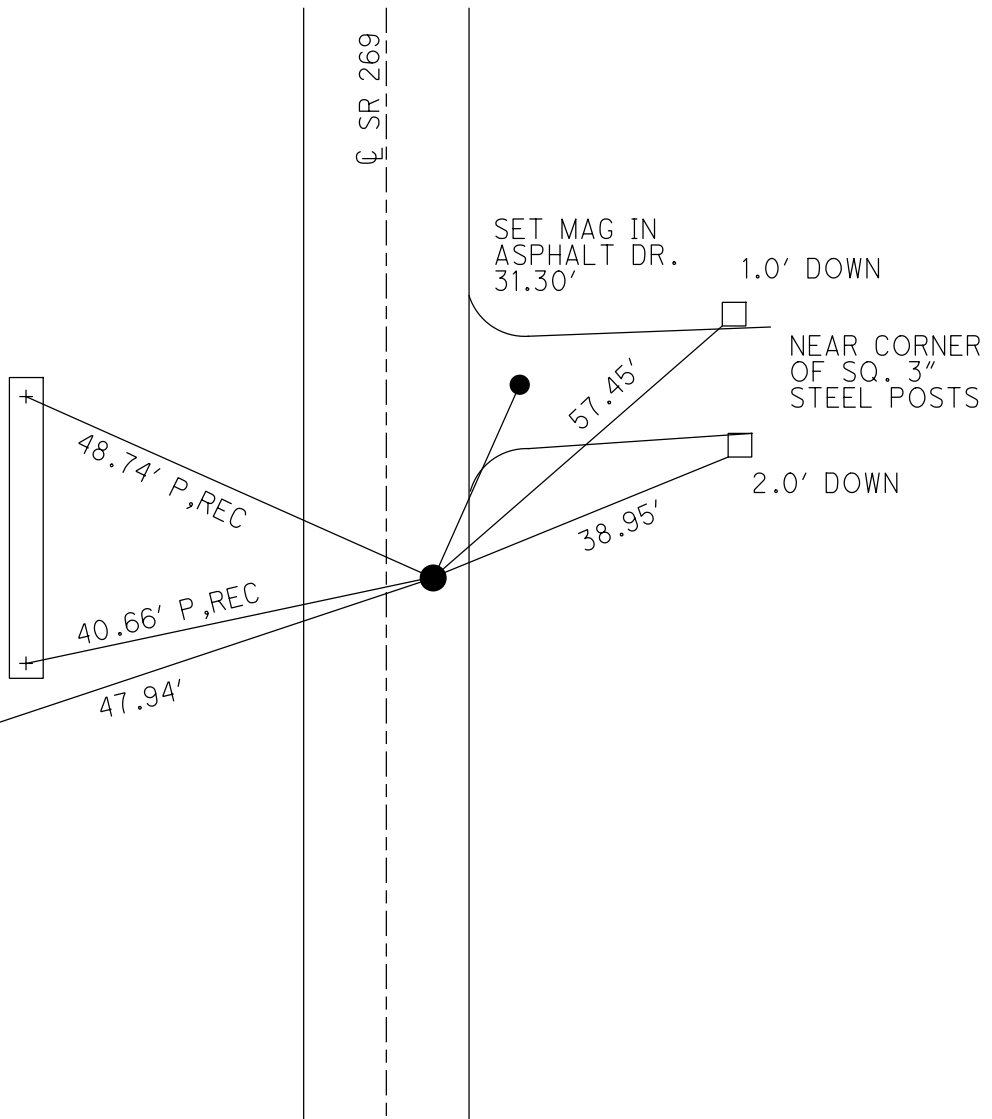
NOTE:  
THIS MAP IS FOR ODOT PURPOSES ONLY  
TO INDEX REFERENCE TIES, AND DOES NOT  
REPRESENT TRUE LAND SUBDIVISION.



RECORD: P.I.  
 STA. 42+55.30  
 FD P.K./WASHER  
 3/31/03, MB  
 SET MAG/WASHER  
 6/30/03, MDB  
 FD MAG/WASHER  
 REF 7  
 9/20/18  
 2/8/19, JFO  
 FD MAG/WASHER  
 9/30/21, DSA  
 SET MAG/WASHER  
 7/22/22, DSA

FD "+" CUTS  
 12" RCP

FD SHI

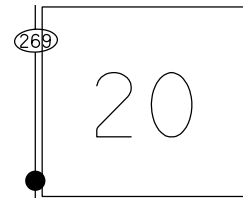


O.D.O.T. DISTRICT 2 SURVEY OFFICE (USE ONLY)

PERSONNEL \_\_\_\_\_ REFERENCE NO. 8 SHEET 2 OF 9  
 NOTES NIESE DATE 9/30/21 ROUTE SR 269  
 H.C. AUBLE WEATHER CLEAR COUNTY OTTAWA  
 R.C. NIESE TEMP. 55° TOWNSHIP DANBURY  
 SECTION 4-20  
 DWG BY WHITAKER PID 95758

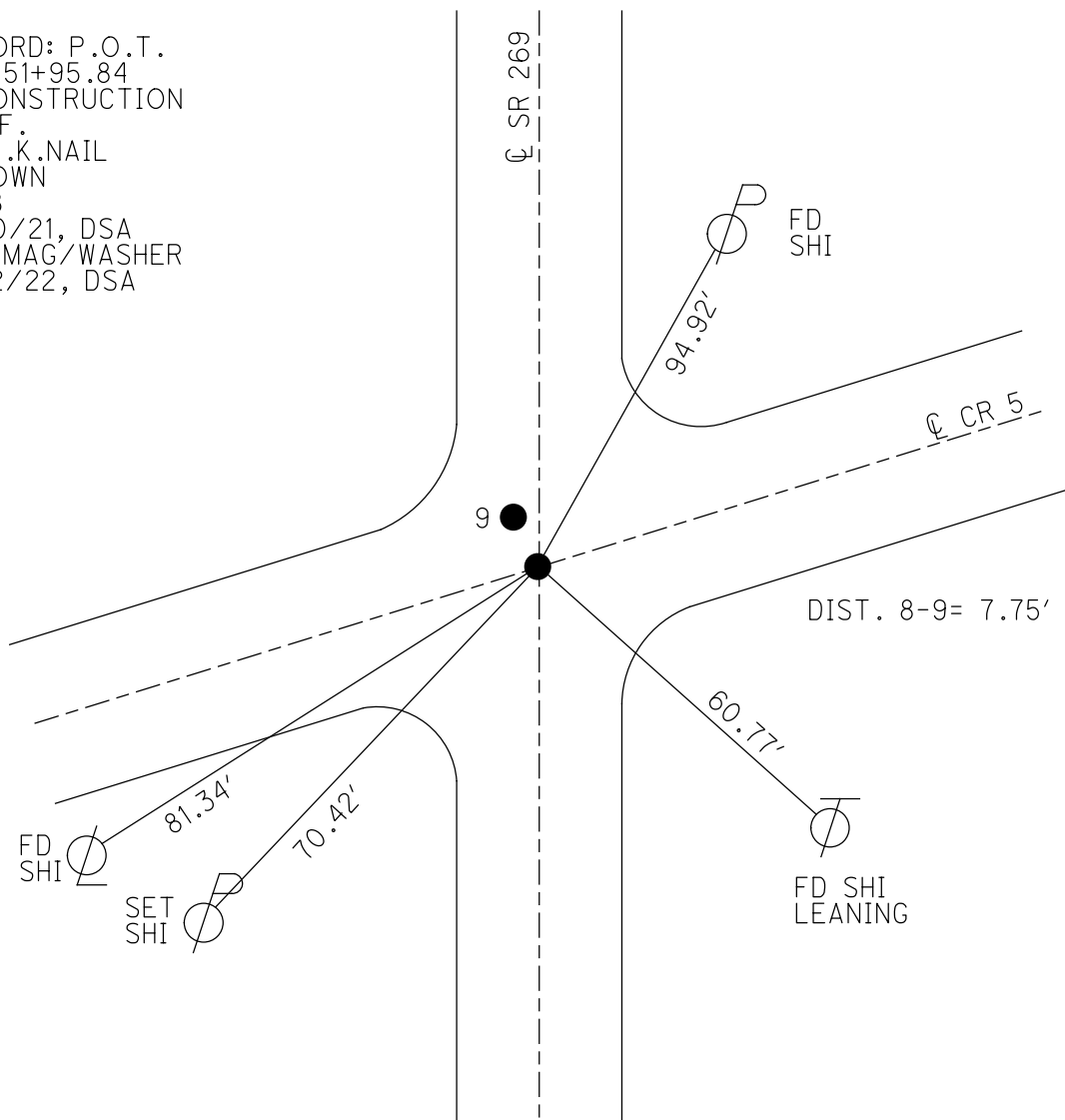
TYPE MONUMENT P.K.NAIL  
~~ON SURFACE~~ - BELOW 1"  
 OFFSET ☉ PAVEMENT ON LT : RT  
- TO - EDGE PAVEMENT  
 STATION: 140+97

NOTE:  
THIS MAP IS FOR ODOT PURPOSES ONLY.  
TO INDEX REFERENCE TIES, AND DOES NOT  
REPRESENT TRUE LAND SUBDIVISION.



HORIZ.DATUM: NAD83 (2011) GEOID: 2018  
 GRID: NORTHING: 672925.523 EASTING: 1878288.623

RECORD: P.O.T.  
 STA.51+95.84  
 ☉ CONSTRUCTION  
 D.N.F.  
 FD P.K.NAIL  
 1" DOWN  
 REF8  
 9/30/21, DSA  
 SET MAG/WASHER  
 7/22/22, DSA

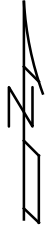
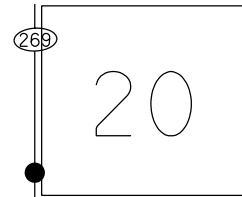


O.D.O.T. DISTRICT 2 SURVEY OFFICE (USE ONLY)

PERSONNEL \_\_\_\_\_ REFERENCE NO. 9 SHEET 3 OF 9  
 NOTES NIESE DATE 9/30/21 ROUTE SR 269  
 H.C. AUBLE WEATHER CLEAR COUNTY OTTAWA  
 R.C. NIESE TEMP. 55° TOWNSHIP DANBURY  
 SECTION 4-20  
 DWG BY WHITAKER PID 95758

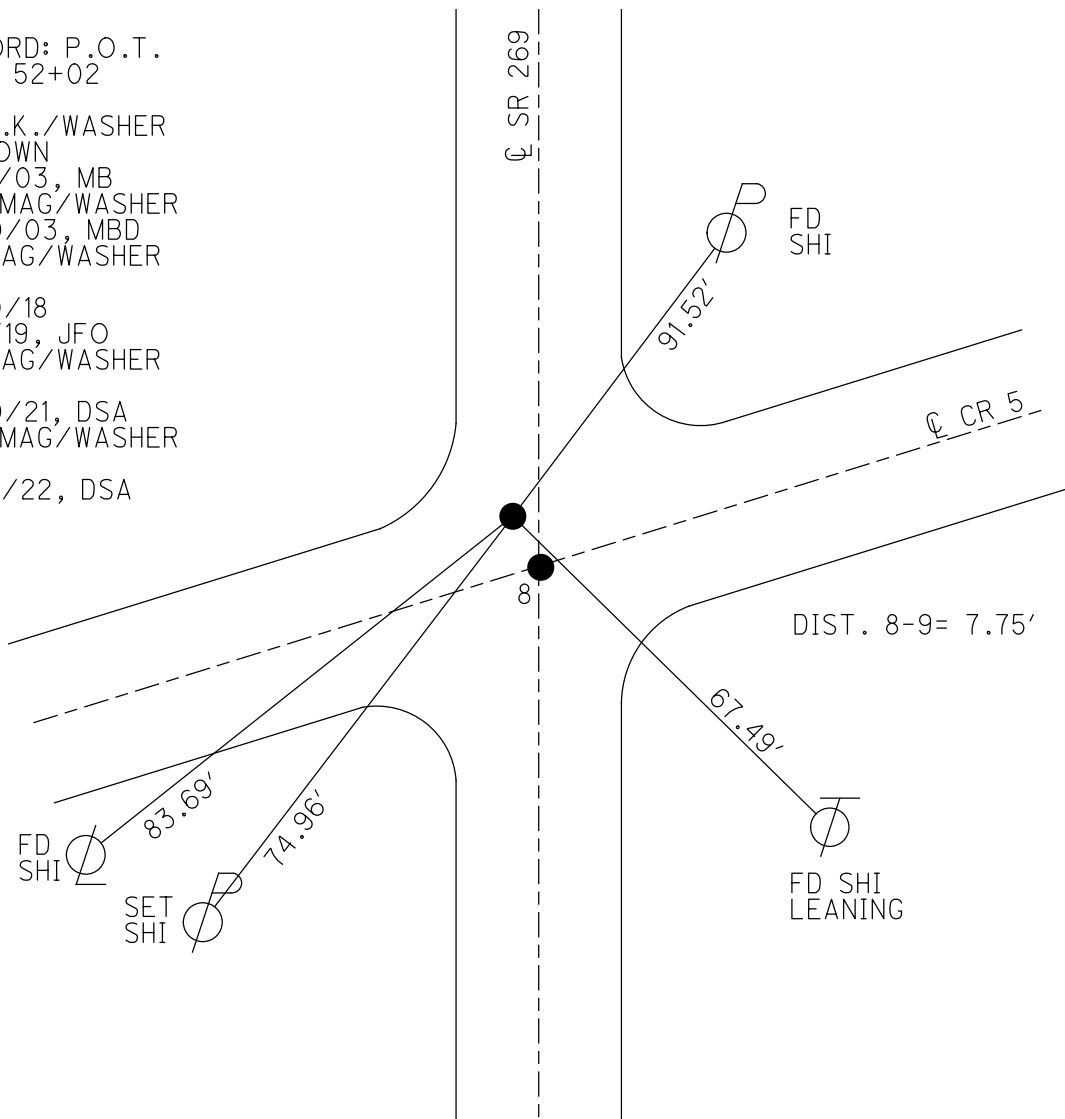
TYPE MONUMENT MAG/WASHER  
 ON SURFACE - ~~BELOW~~ ON \_\_\_\_\_  
 OFFSET  $\odot$  PAVEMENT 2.0' LT : ~~RT~~  
 - TO - EDGE PAVEMENT  
 STATION: 140+97

NOTE:  
 THIS MAP IS FOR ODOT PURPOSES ONLY.  
 TO INDEX REFERENCE TIES, AND DOES NOT  
 REPRESENT TRUE LAND SUBDIVISION.



HORZ. DATUM: NAD83(2011) GEOID: 2018  
 GRID: NORTHING: 672932.815 EASTING: 1878285.943

RECORD: P.O.T.  
 STA. 52+02  
 1971  
 FD P.K./WASHER  
 2" DOWN  
 3/31/03, MB  
 SET MAG/WASHER  
 6/30/03, MBD  
 FD MAG/WASHER  
 REF9  
 9/20/18  
 2/8/19, JFO  
 FD MAG/WASHER  
 REF9  
 9/30/21, DSA  
 SET MAG/WASHER  
 REF9  
 7/22/22, DSA

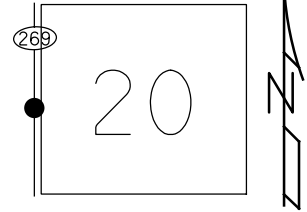


O.D.O.T. DISTRICT 2 SURVEY OFFICE (USE ONLY)

PERSONNEL \_\_\_\_\_ REFERENCE NO. 10 SHEET 4 OF 9  
 NOTES NIESE DATE 9/30/21 ROUTE SR 269  
 H.C. AUBLE WEATHER CLEAR COUNTY OTTAWA  
 R.C. NIESE TEMP. 57° TOWNSHIP DANBURY  
 DWG BY WHITAKER PID 95758 SECTION 4-20

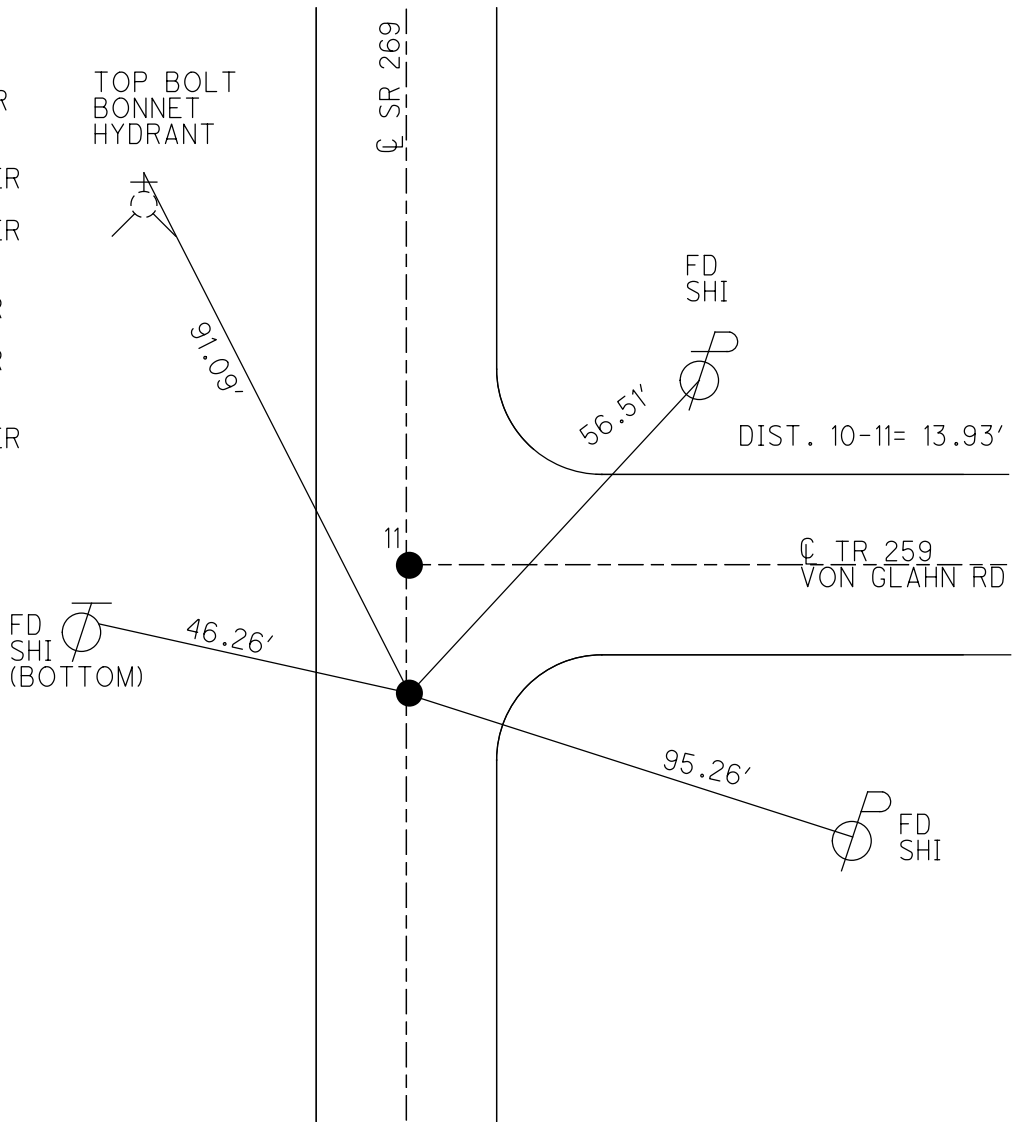
TYPE MONUMENT MAG/WASHER  
 ON SURFACE - ~~BELOW~~ ON  
 OFFSET  $\odot$  PAVEMENT ON LT : RT  
12.4' TO LT EDGE PAVEMENT  
 STATION: 157+87

NOTE:  
THIS MAP IS FOR ODOT PURPOSES ONLY  
TO INDEX REFERENCE TIES AND DOES NOT  
REPRESENT TRUE LAND SUBDIVISION.



HORZ. DATUM: NAD83(2011) GEOID: 2018  
 GRID: NORTHING: 674623.474 EASTING: 1878250.326

RECORD: P.I.  
 STA. 68+95.40  
 FD P.K./WASHER  
 2" DOWN  
 3/31/03, MB  
 SET MAG/WASHER  
 6/30/03, MDB  
 SET MAG/WASHER  
 REF10  
 9/26/18, JFO  
 FD MAG/WASHER  
 2/8/19, JFO  
 FD MAG/WASHER  
 REF10  
 9/30/21, DSA  
 SET MAG/WASHER  
 7/22/22, DSA

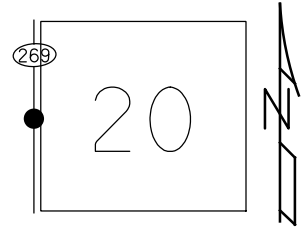


O.D.O.T. DISTRICT 2 SURVEY OFFICE (USE ONLY)

PERSONNEL \_\_\_\_\_ REFERENCE NO. 11 SHEET 5 OF 9  
 NOTES NIESE DATE 9/30/21 ROUTE SR 269  
 H.C. AUBLE WEATHER CLEAR COUNTY OTTAWA  
 R.C. NIESE TEMP. 57° TOWNSHIP DANBURY  
 SECTION 4-20  
 DWG BY WHITAKER PID 95758

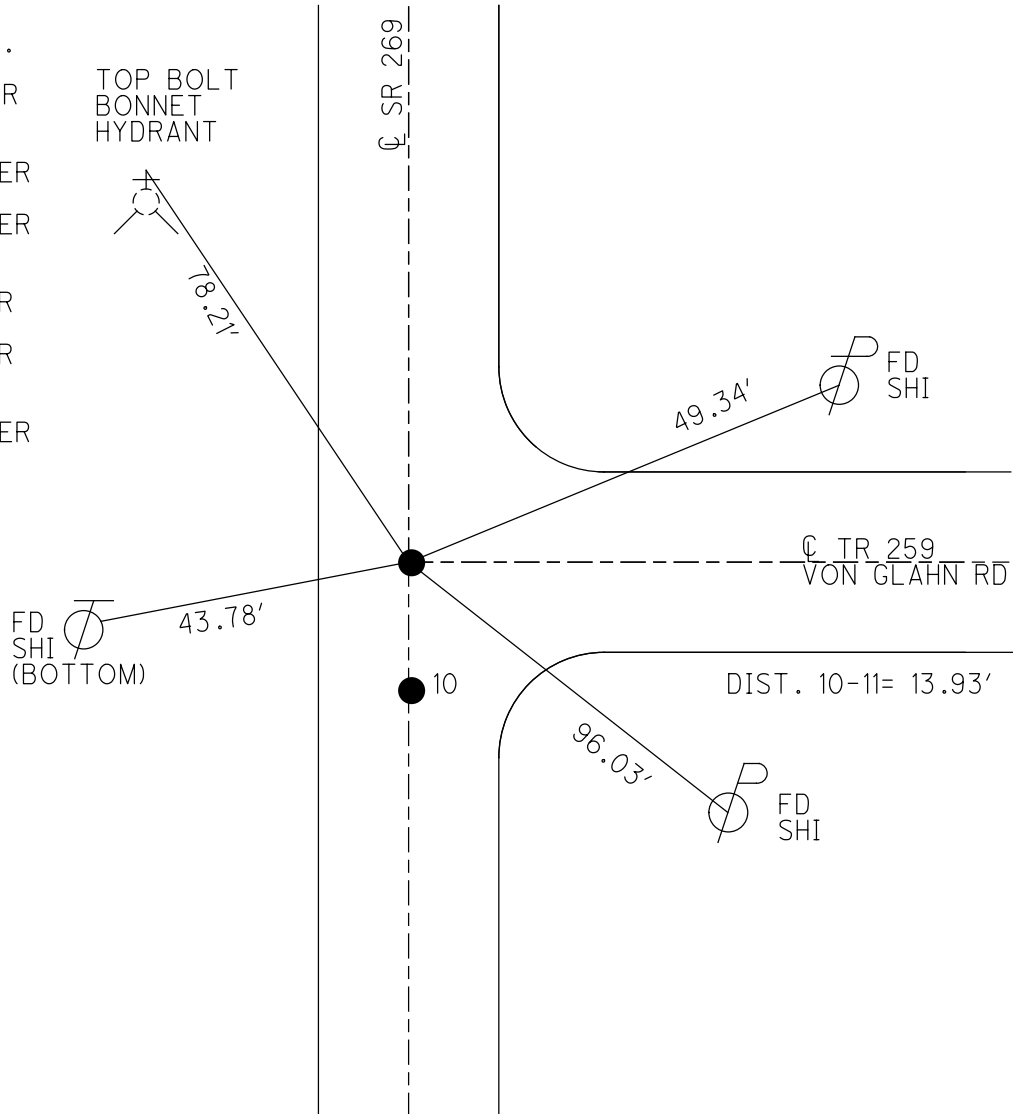
TYPE MONUMENT MAG/WASHER  
 ON SURFACE - ~~BELOW~~ ON  
 OFFSET Q PAVEMENT ON LT : RT  
12.4' TO LT EDGE PAVEMENT  
 STATION: 158+01

NOTE:  
THIS MAP IS FOR ODOT PURPOSES ONLY  
TO INDEX REFERENCE TIES, AND DOES NOT  
REPRESENT TRUE LAND SUBDIVISION.



HORIZ.DATUM: NAD83(2011) GEOID: 2012A  
 GRID: NORTHING: 674637.411 EASTING: 1878249.914

RECORD: P.O.T.  
 STA. 69+09.28  
 FD P.K./WASHER  
 2" DOWN  
 3/31/03, MB  
 SET MAG/WASHER  
 6/30/03, MDB  
 SET MAG/WASHER  
 REF11  
 9/26/18, JFO  
 FD MAG/WASHER  
 2/8/19, JFO  
 FD MAG/WASHER  
 REF11  
 9/30/21, DSA  
 SET MAG/WASHER  
 7/22/22, DSA



O.D.O.T. DISTRICT 2 SURVEY OFFICE (USE ONLY)

PERSONNEL

REFERENCE NO. 12

SHEET 6 OF 9

NOTES NIESE  
 H.C. AUBLE  
 R.C. NIESE

DATE 9/30/21  
 WEATHER SUNNY  
 TEMP. 55°

ROUTE SR 269  
 COUNTY OTTAWA  
 TOWNSHIP DANBURY  
 SECTION 4-20

DWG BY WHITAKER PID 95758

TYPE MONUMENT P.K. SHANK

~~ON SURFACE~~ - BELOW 2"

OFFSET 0.3' LT : ~~RT~~

13.1' TO RT EDGE PAVEMENT

STATION: 168+92

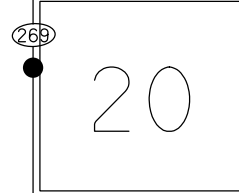
HORZ. DATUM: NAD83 (2011)

GEOID: 2018

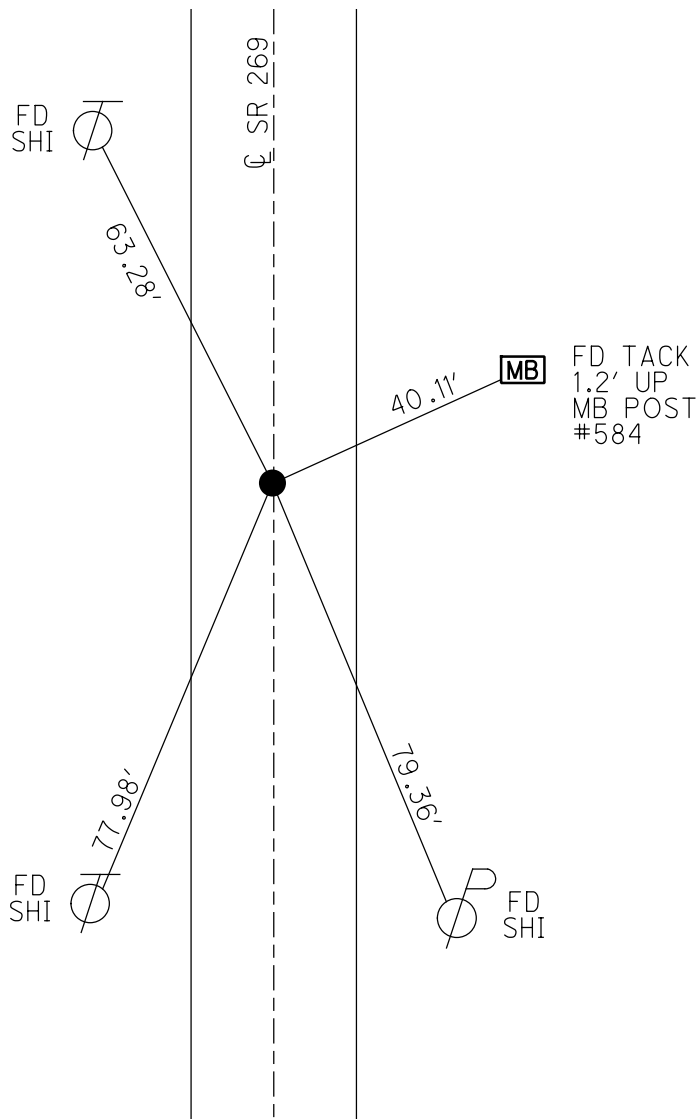
GRID: NORTHING: 675727.738

EASTING: 1878222.133

NOTE:  
THIS MAP IS FOR ODOT PURPOSES ONLY  
TO INDEX REFERENCE TIES, AND DOES NOT  
REPRESENT TRUE LAND SUBDIVISION.



RECORD: P.O.T.  
 STA. 80+00  
 FD P.K./WASHER  
 3/31/03, MB  
 SET MAG/WASHER  
 6/30/03, MDB  
 D.N.F.  
 9/26/18, JFO  
 FD P.K. SHANK  
 REF12  
 9/30/21, DSA  
 SET MAG/WASHER  
 7/22/22, DSA



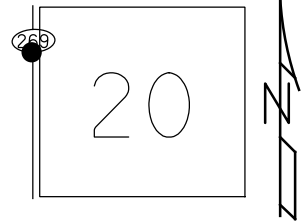
FD TACK  
 1.2' UP  
 MB POST  
 #584

O.D.O.T. DISTRICT 2 SURVEY OFFICE (USE ONLY)

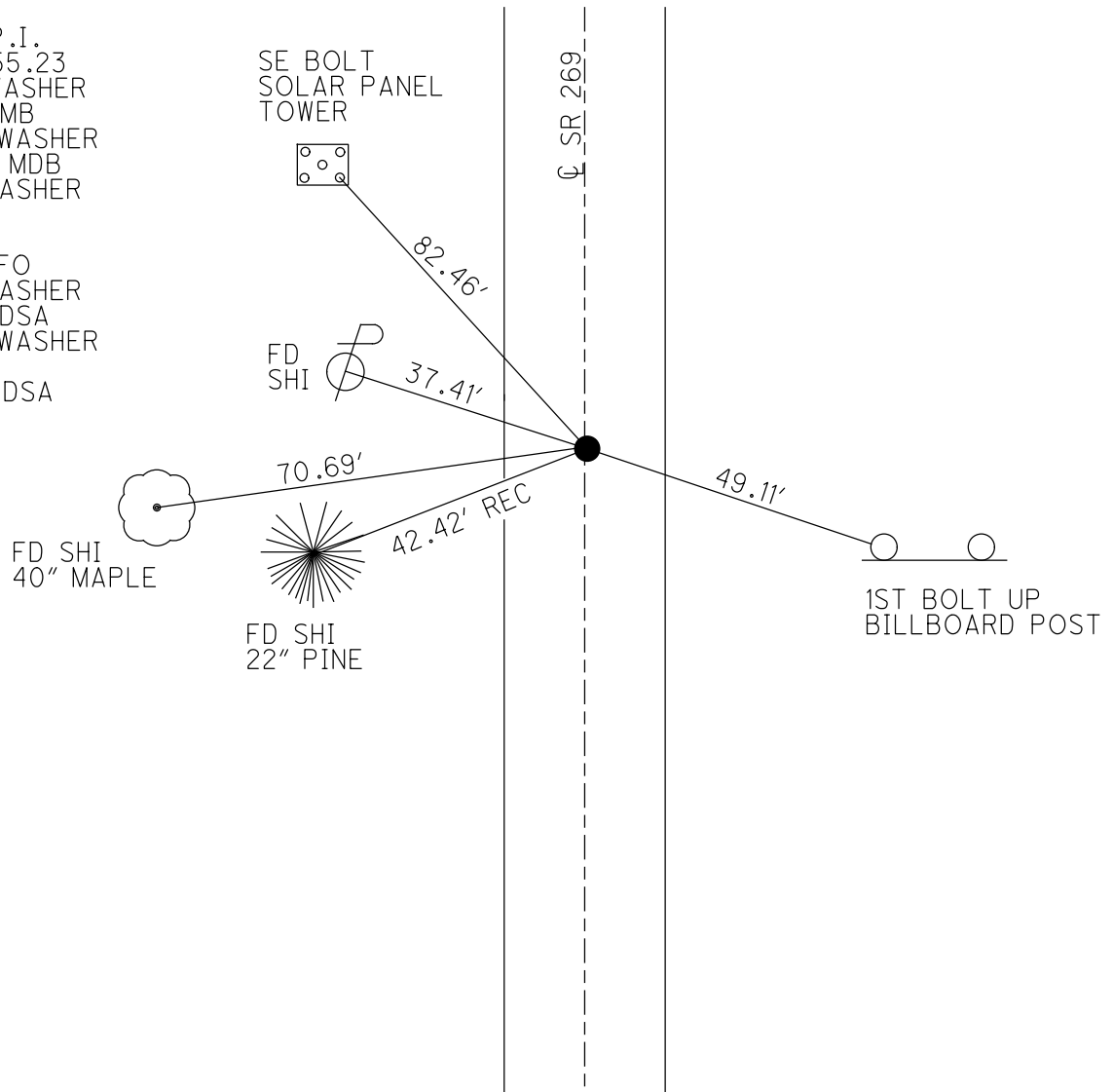
PERSONNEL \_\_\_\_\_ REFERENCE NO. 13 SHEET 7 OF 9  
 NOTES NIESE DATE 9/30/21 ROUTE SR 269  
 H.C. AUBLE WEATHER SUNNY COUNTY OTTAWA  
 R.C. NIESE TEMP. 57° TOWNSHIP DANBURY  
 DWG BY WHITAKER PID 95758 SECTION 4-20

TYPE MONUMENT MAG/WASHER  
 ON SURFACE - ~~BELOW~~ ON  
 OFFSET Q PAVEMENT ON LT : RT  
13.5' TO RT EDGE PAVEMENT  
 STATION: 184+46  
 HORZ.DATUM: NAD83(2011) GEOID: 2012A  
 GRID: NORTHING: 677282.165 EASTING: 1878182.764

NOTE:  
 THIS MAP IS FOR ODOT PURPOSES ONLY  
 TO INDEX REFERENCE TIES, AND DOES NOT  
 REPRESENT TRUE LAND SUBDIVISION.



RECORD: P.I.  
 STA. 95+55.23  
 FD P.K./WASHER  
 3/31/03, MB  
 SET MAG/WASHER  
 6/30/03, MDB  
 FD MAG/WASHER  
 REF13  
 9/26/18  
 2/8/19, JFO  
 FD MAG/WASHER  
 9/30/21, DSA  
 SET MAG/WASHER  
 NEWREF13  
 7/22/22, DSA



O.D.O.T. DISTRICT 2 SURVEY OFFICE (USE ONLY)

PERSONNEL \_\_\_\_\_ REFERENCE NO. 14 SHEET 8 OF 9  
 NOTES NIESE DATE 9/30/21 ROUTE SR 269  
 H.C. AUBLE WEATHER SUNNY COUNTY OTTAWA  
 R.C. NIESE TEMP. 64° TOWNSHIP DANBURY  
 SECTION 4-20

DWG BY WHITAKER PID 95758

TYPE MONUMENT MAG NAIL

ON SURFACE - ~~BELOW~~ ON

OFFSET Q PAVEMENT ON LT : RT

12.4' TO RT EDGE PAVEMENT

STATION: 195+82

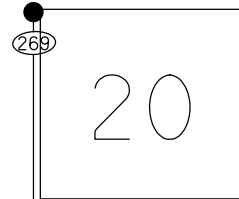
HORZ. DATUM: NAD83(2011)

GEOID: 2012A

GRID: NORTHING: 678418.368

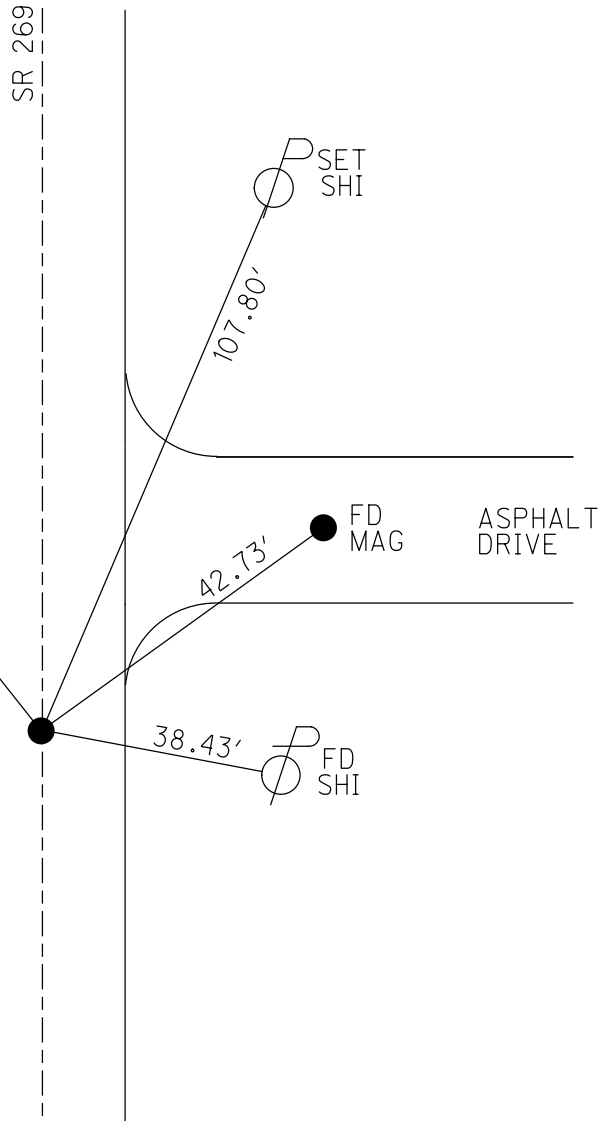
EASTING: 1878154.653

NOTE:  
THIS MAP IS FOR ODOT PURPOSES ONLY  
TO INDEX REFERENCE TIES, AND DOES NOT  
REPRESENT TRUE LAND SUBDIVISION.



RECORD: P.I.  
 STA. 106+92.10  
 FD P.K./WASHER  
 2" DOWN  
 3/31/03, MB  
 SET MAG/WASHER  
 6/30/03, MDB  
 FD MAG/WASHER  
 REF14  
 9/26/18  
 2/8/19, JFO  
 FD MAG MAIL  
 REF14  
 9/30/21, DSA  
 SET MAG/WASHER  
 7/22/22, DSA

FD P.K.  
 IN 1ST SEAM  
 CONC.DRIVE  
 30.64'





O.D.O.T. DISTRICT 2 SURVEY OFFICE (USE ONLY)

PERSONNEL

REFERENCE NO. 14 A

SHEET 1 OF 18

NOTES MOSER DATE 5/5/11  
 H.C. MOSER WEATHER SUNNY  
 R.C. LUMBREZER TEMP. 60°

ROUTE SR 269  
 COUNTY OTTAWA  
 TOWNSHIP DANBURY  
 SECTION 4-21

DWG BY NIESE PID PAV'T TRAIN

TYPE MONUMENT P.K. NAIL

ON SURFACE - ~~BELOW~~ ON

OFFSET CL PAVEMENT 13.0' LT : RT

40.9' TO LT EDGE PAVEMENT

STATION: 204+33.4

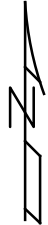
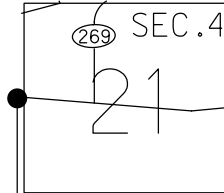
HORZ.DATUM: NAD83(2011)

GEOID: 2012A

GRID: NORTHING: 679603.040

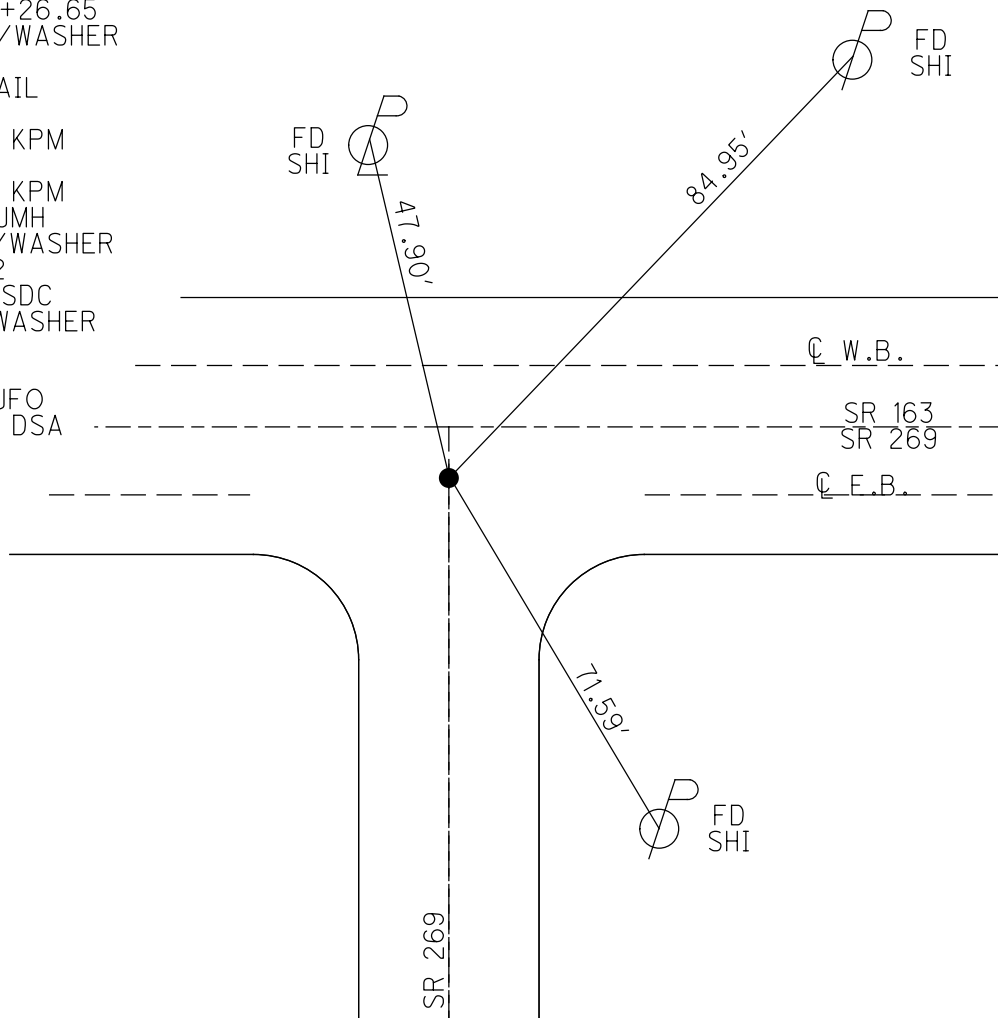
EASTING: 1878125.169

NOTE:  
THIS MAP IS FOR ODOT PURPOSES ONLY.  
TO INDEX REFERENCE TIES, AND DOES NOT  
REPRESENT TRUE LAND SUBDIVISION.



NOTE: REF 132 SR 163

RECORD: P.O.C.  
 STA. 254+26.65  
 SET P.K./WASHER  
 1983  
 FD P.K.NAIL  
 9/28/09  
 3/29/10, KPM  
 SV101  
 4/23/10, KPM  
 9/9/10, JMH  
 SET MAG/WASHER  
 FINREF132  
 9/17/12, SDC  
 FD MAG/WASHER  
 REFA14  
 9/26/18  
 2/8/19, JFO  
 9/30/21, DSA

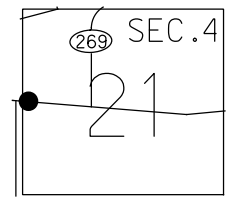


O.D.O.T. DISTRICT 2 SURVEY OFFICE (USE ONLY)

PERSONNEL \_\_\_\_\_ REFERENCE NO. 14 AB SHEET 2 OF 18  
 NOTES MOSER DATE 5/5/11 ROUTE SR 269  
 H.C. MOSER WEATHER SUNNY COUNTY OTTAWA  
 R.C. LUMBREZER TEMP. 60° TOWNSHIP DANBURY  
 DWG BY NIESE PID PAV'T TRAIN SECTION 4-21

NOTE: THIS MAP IS FOR ODOT PURPOSES ONLY TO INDEX REFERENCE TIES, AND DOES NOT REPRESENT TRUE LAND SUBDIVISION.

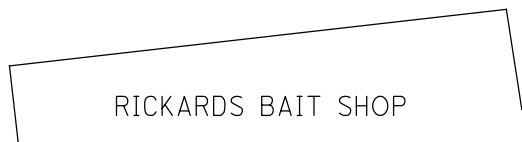
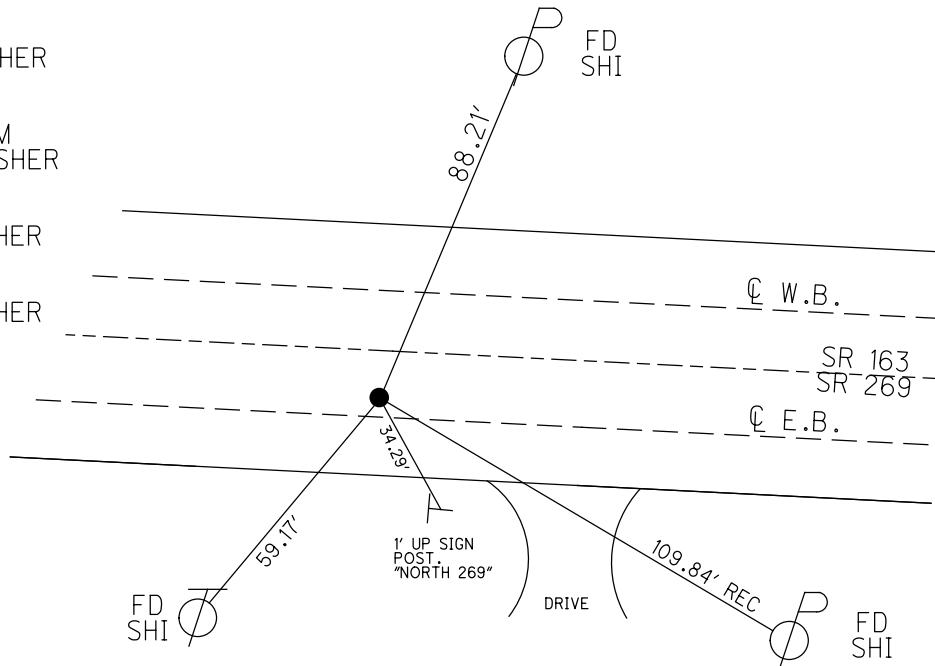
TYPE MONUMENT P.K./WASHER  
~~ON SURFACE~~ - BELOW 1"  
 OFFSET  $\odot$  PAVEMENT 11.2'  $\pm$  : RT  
16.4' TO RT EDGE PAVEMENT  
 STATION: 205+90.3



HORIZ.DATUM: NAD83(2011) GEOID: 2012A  
 GRID: NORTHING: 679598.511 EASTING: 1878282.014

NOTE: REF 132A SR 163

RECORD: P.I.  
 STA. 255+82.65  
 SET P.K./WASHER  
 OVER R.R.SPIKE  
 2" DOWN  
 1983  
 FD P.K./WASHER  
 9/28/09  
 SV102  
 4/23/10, KPM  
 SET MAG/WASHER  
 FINREFA132  
 9/17/12, SDC  
 FD MAG/WASHER  
 REFA132  
 1/16/13, MC  
 FD MAG/WASHER  
 REFAB14  
 9/26/18  
 2/8/19, JFO



RICKARDS BAIT SHOP

O.D.O.T. DISTRICT 2 SURVEY OFFICE (USE ONLY)

PERSONNEL

REFERENCE NO. 14 B

SHEET 3 OF 18

NOTES RHOADES

DATE 12/4/14

ROUTE SR 269

H.C. WESTFALL

WEATHER CLOUDY

COUNTY OTTAWA

R.C. HOMAN

TEMP. 28°

TOWNSHIP DANBURY

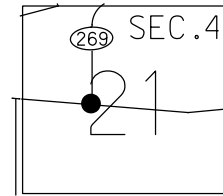
SECTION 4-21

DWG BY RHOADES PID 93682

TYPE MONUMENT MONBOX W/1" IPIN

NOTES:  
THIS MAP IS FOR ODOT PURPOSES ONLY  
TO INDEX REFERENCE TIES, AND DOES NOT  
REPRESENT TRUE LAND SUBDIVISION.

ON SURFACE - ~~BELOW~~ ON



OFFSET ☉ PAVEMENT 8.3' LT : RT

- TO - EDGE PAVEMENT

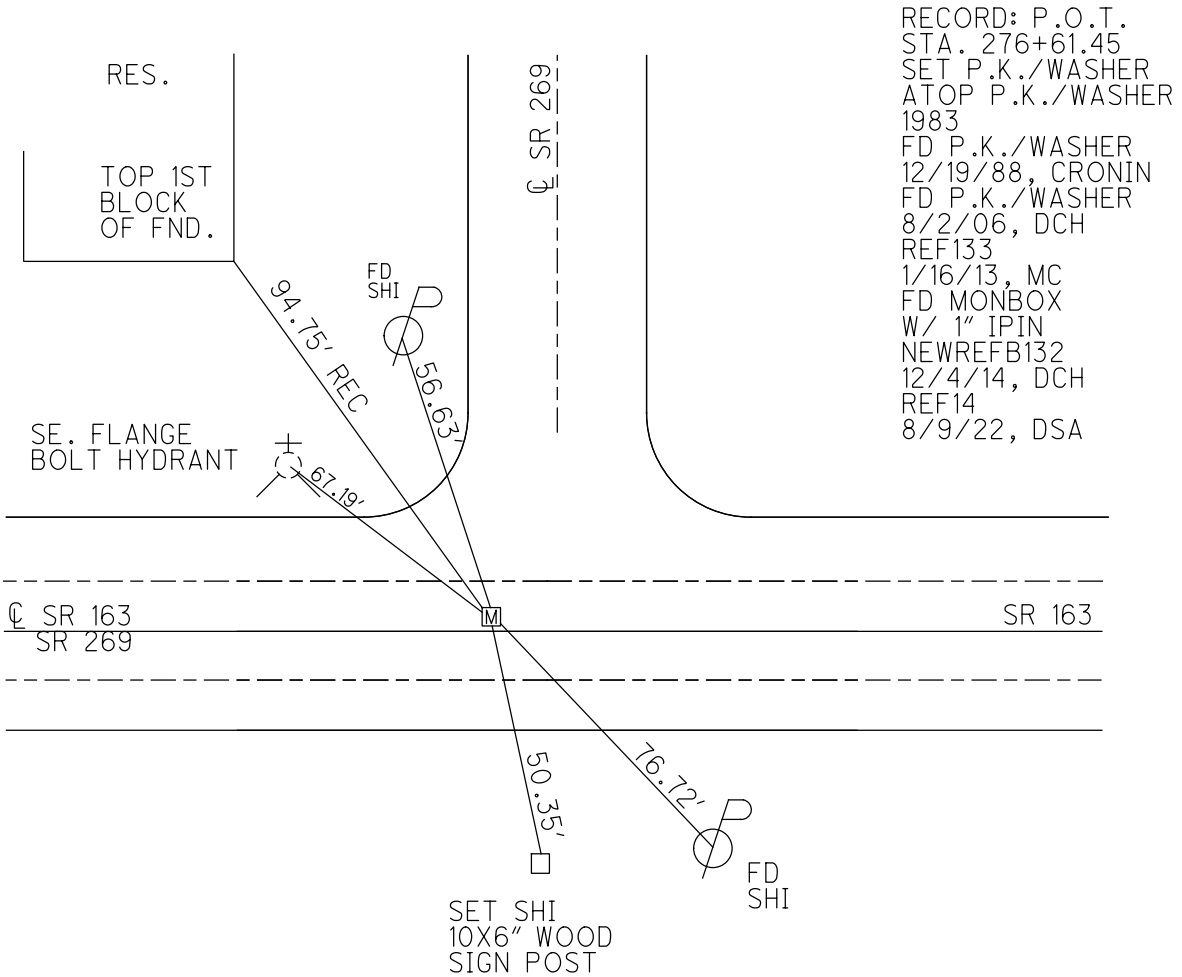
STATION: 226+51.2

HORIZ.DATUM: NAD83 2011

GEOID: NAVD88 2018

GRID: NORTHING: 679504.025

EASTING: 1880359.041



RECORD: P.O.T.  
 STA. 276+61.45  
 SET P.K./WASHER  
 ATOP P.K./WASHER  
 1983  
 FD P.K./WASHER  
 12/19/88, CRONIN  
 FD P.K./WASHER  
 8/2/06, DCH  
 REF133  
 1/16/13, MC  
 FD MONBOX  
 W/ 1" IPIN  
 NEWREFB132  
 12/4/14, DCH  
 REF14  
 8/9/22, DSA

O.D.O.T. DISTRICT 2 SURVEY OFFICE (USE ONLY)

PERSONNEL \_\_\_\_\_ REFERENCE NO. 15 SHEET 4 OF 18

NOTES RHOADES DATE 12/4/14 ROUTE SR 269

H.C. WESTFALL WEATHER CLOUDY COUNTY OTTAWA

R.C. HOMAN TEMP. 28° TOWNSHIP DANBURY

SECTION 4-21

DWG BY RHOADES PID 93682

TYPE MONUMENT MONBOX W/1" IPIN

ON SURFACE - ~~BELOW~~ ON

OFFSET Q PAVEMENT ON LT : RT

11.8' TO LT EDGE PAVEMENT

STATION: 241+44.94

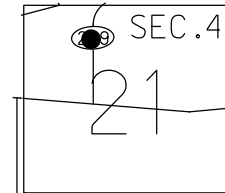
HORIZ.DATUM: NAD83 2011

GEOID: NAVD88 2018

GRID: NORTHING: 680997.474

EASTING: 1880323.427

NOTE:  
THIS MAP IS FOR ODOT PURPOSES ONLY  
TO INDEX REFERENCE TIES, AND DOES NOT  
REPRESENT TRUE LAND SUBDIVISION.



RECORD: T.S.  
STA. 156+09.04  
FD P.K./WASHER  
ATOP P.K./WASHER  
ATOP P.K./WASHER  
FD P.K./WASHER  
12/19/88, CRONIN  
FD P.K./WASHER  
REF15  
1/16/13, MC  
FD MONBOX  
W/ 1" IPIN  
NEWREF15  
12/4/14, DCH  
REF15  
8/9/22, DSA

SET BARN SPIKES  
5' W. OF EP

25.04'  
39.70'  
26.36'

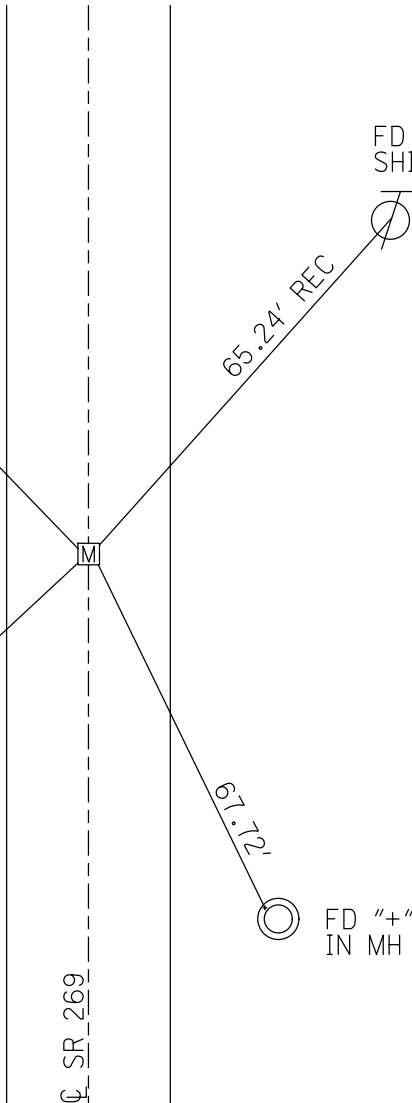
Q SR 269

65.24' REC

67.72'

FD  
SHI

FD "+" CUT  
IN MH CASTING

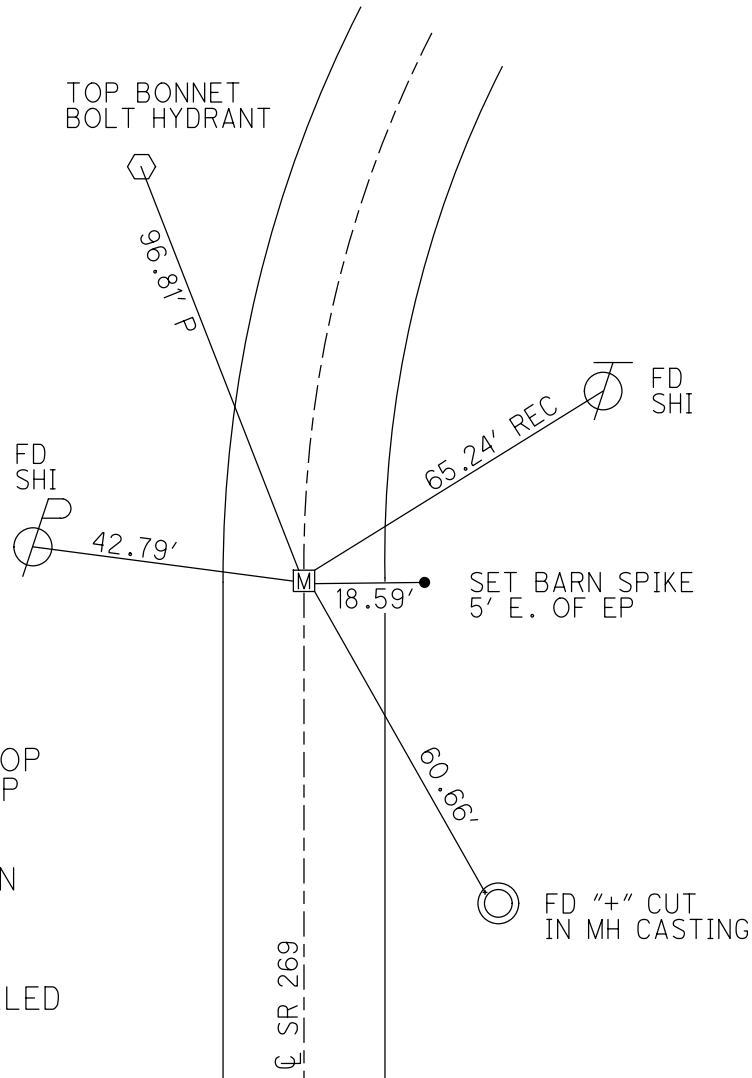
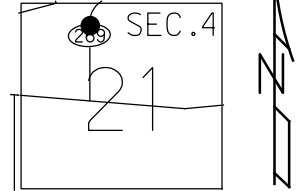


O.D.O.T. DISTRICT 2 SURVEY OFFICE (USE ONLY)

PERSONNEL \_\_\_\_\_ REFERENCE NO. 16 SHEET 5 OF 18  
 NOTES RHOADES DATE 12/4/14 ROUTE SR 269  
 H.C. WESTFALL WEATHER CLOUDY COUNTY OTTAWA  
 R.C. HOMAN TEMP. 28° TOWNSHIP DANBURY  
 \_\_\_\_\_ SECTION 4-21  
 \_\_\_\_\_

TYPE MONUMENT MON.BOX  
 ON SURFACE - ~~BELOW~~ ON  
 LEFT - CL PAV'T - RIGHT ON  
11.7' TO LT EDGE PAVEMENT  
 S.L.M. 244+44.94  
 GRID: NORTHING: 681297.346 EASTING: 1880326.637

NOTE:  
 THIS MAP IS FOR ODOT PURPOSES ONLY  
 TO INDEX REFERENCE TIES, AND DOES NOT  
 REPRESENT TRUE LAND SUBDIVISION.



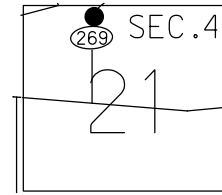
RECORD: S.C.  
 STA. 159+09.04  
 P.K./WASHER ATOP  
 BOLT SPIKE ATOP  
 P.K. NAIL  
 FD P.K./WASHER  
 12/19/88, CRONIN  
 FD P.K./WASHER  
 GPS, REF16  
 1/16/13, MC  
 MON.BOX INSTALLED  
 W/ 1" IPIN  
 GPS, NEWREF16

O.D.O.T. DISTRICT 2 SURVEY OFFICE (USE ONLY)

PERSONNEL \_\_\_\_\_ REFERENCE NO. 17 SHEET 6 OF 18  
 NOTES RHOADES DATE 6/13/14 ROUTE SR 269  
 H.C. WESTFALL WEATHER CLOUDY COUNTY OTTAWA  
 R.C. MEYER TEMP. 65° TOWNSHIP DANBURY  
 \_\_\_\_\_ SECTION 4-21  
 \_\_\_\_\_

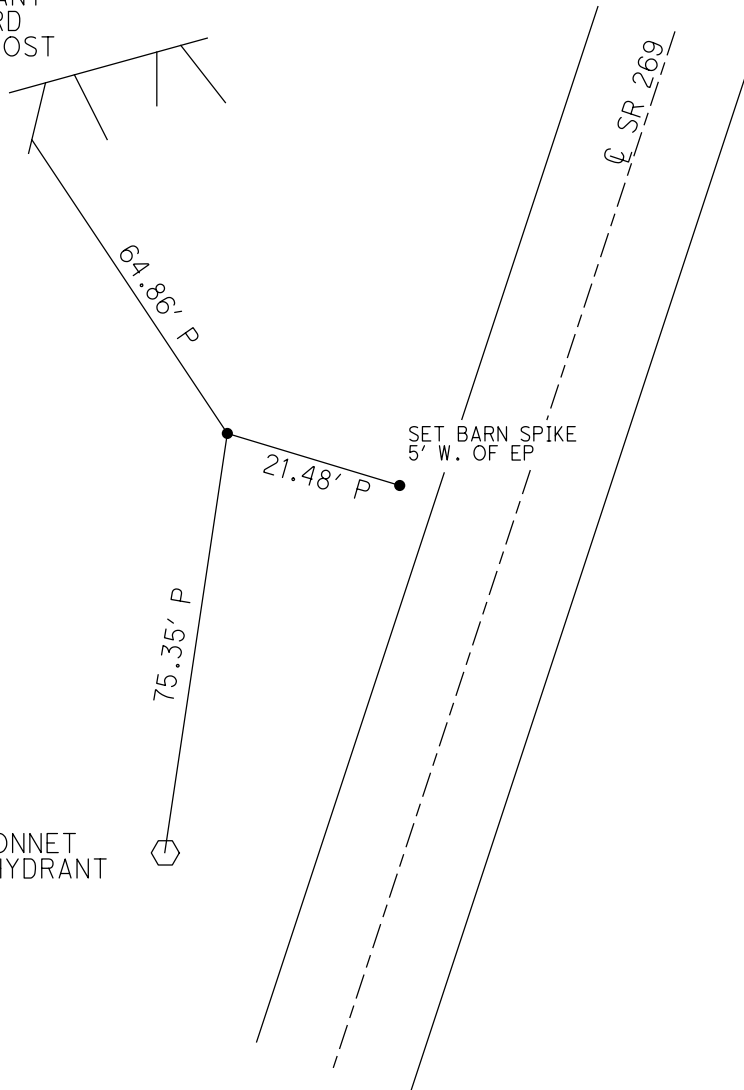
TYPE MONUMENT \_\_\_\_\_ IPIN \_\_\_\_\_  
~~ON SURFACE~~ - BELOW 0.4'  
 LEFT - ℄ PAV'T - ~~RIGHT~~ 38.2'  
26.5' LT TO LT EDGE PAVEMENT  
 S.L.M. 246+10.33  
 GRID: NORTHING: 681467.483 EASTING: 1880312.067

NOTE:  
THIS MAP IS FOR ODOT PURPOSES ONLY.  
TO INDEX REFERENCE TIES, AND DOES NOT  
REPRESENT TRUE LAND SUBDIVISION.



RESTAURANT  
BILLBOARD  
1' UP W. POST

TOP BONNET  
BOLT HYDRANT



RECORD: P.I.  
 STA. 160+79.10  
 ℄ SURVEY & CONST.  
 FD IPIN  
 12/19/88, CRONIN  
 FD IPIN  
 GPS, REF17  
 1/16/13, MC  
 MON. BOX INSTALLED  
 W/ 1" IPIN  
 GPS, NEWREF17  
 12/4/14, EBW

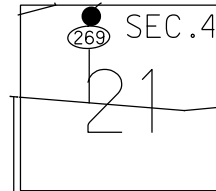
**O.D.O.T. DISTRICT 2 SURVEY OFFICE (USE ONLY)**

PERSONNEL \_\_\_\_\_ REFERENCE NO. 18 SHEET 7 OF 18

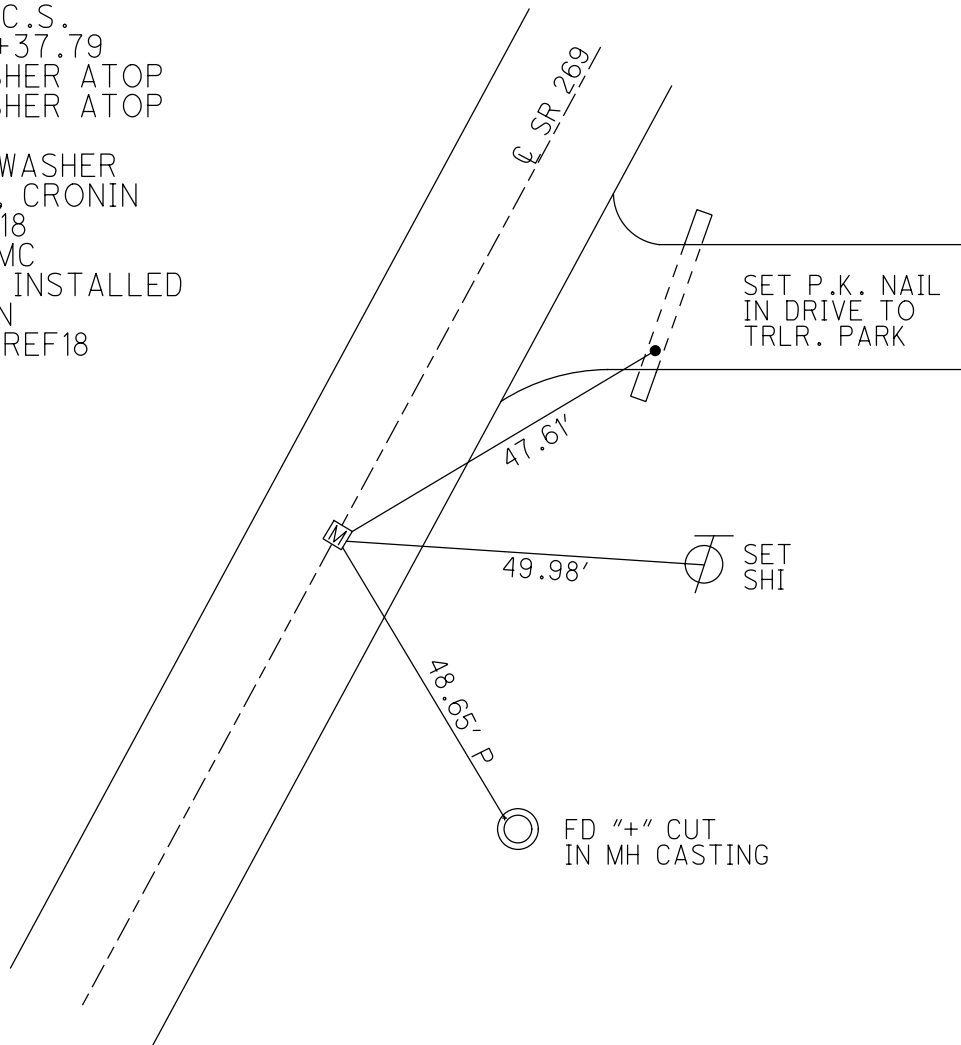
NOTES RHOADES DATE 12/4/14 ROUTE SR 269  
 H.C. WESTFALL WEATHER CLOUDY COUNTY OTTAWA  
 R.C. HOMAN TEMP. 28° TOWNSHIP DANBURY  
 \_\_\_\_\_ SECTION 4-21  
 \_\_\_\_\_

TYPE MONUMENT \_\_\_\_\_ MON.BOX \_\_\_\_\_  
 ON SURFACE - ~~BELOW~~ \_\_\_\_\_ ON \_\_\_\_\_  
 LEFT - CL PAV'T - RIGHT \_\_\_\_\_ ON \_\_\_\_\_  
11.7' TO LT. EDGE PAVEMENT  
 S.L.M. 247+74.26  
 GRID: NORTHING: 681619.223 EASTING: 1880390.067

NOTE: THIS MAP IS FOR ODOT PURPOSES ONLY TO INDEX REFERENCE TIES, AND DOES NOT REPRESENT TRUE LAND SUBDIVISION.



RECORD: C.S.  
 STA. 162+37.79  
 P.K./WASHER ATOP  
 P.K./WASHER ATOP  
 P.K.NAIL  
 FD P.K./WASHER  
 12/19/88, CRONIN  
 GPS, REF18  
 1/16/13, MC  
 MON.BOX INSTALLED  
 W/ 1" IPIN  
 GPS, NEWREF18



**O.D.O.T. DISTRICT 2 SURVEY OFFICE (USE ONLY)**

PERSONNEL \_\_\_\_\_ REFERENCE NO. 19 SHEET 8 OF 18

NOTES RHOADES DATE 6/13/14 ROUTE SR 269  
 H.C. WESTFALL WEATHER CLOUDY COUNTY OTTAWA  
 R.C. MEYER TEMP. 65° TOWNSHIP DANBURY  
 \_\_\_\_\_ SECTION 4-21

TYPE MONUMENT \_\_\_\_\_ P.K./WASHER \_\_\_\_\_

ON SURFACE - ~~BELOW~~ \_\_\_\_\_ ON \_\_\_\_\_

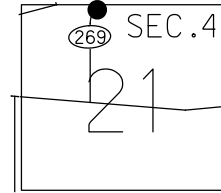
LEFT - CL PAV'T - RIGHT \_\_\_\_\_ ON \_\_\_\_\_

11.8' TO LT. EDGE PAVEMENT

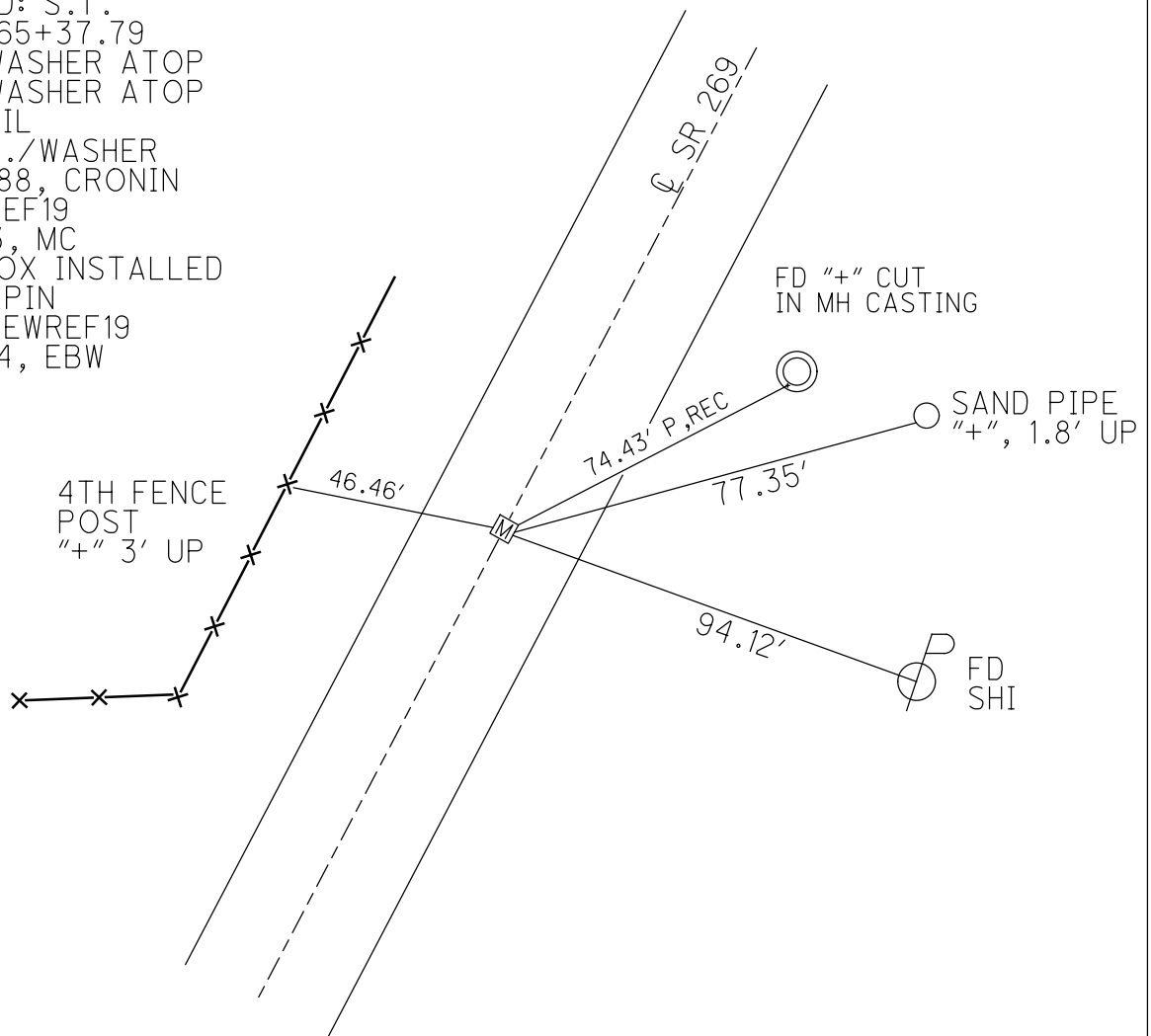
S.L.M. 250+74.26

GRID: NORTHING: 681897.833 EASTING: 1880501.682

NOTE: THIS MAP IS FOR ODOT PURPOSES ONLY TO INDEX REFERENCE TIES, AND DOES NOT REPRESENT TRUE LAND SUBDIVISION.



RECORD: S.T.  
 STA. 165+37.79  
 P.K./WASHER ATOP  
 P.K./WASHER ATOP  
 P.K.NAIL  
 FD P.K./WASHER  
 12/19/88, CRONIN  
 GPS, REF19  
 1/18/13, MC  
 MON.BOX INSTALLED  
 W/ 1" IPIN  
 GPS, NEWREF19  
 12/4/14, EBW



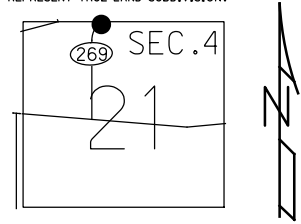


O.D.O.T. DISTRICT 2 SURVEY OFFICE (USE ONLY)

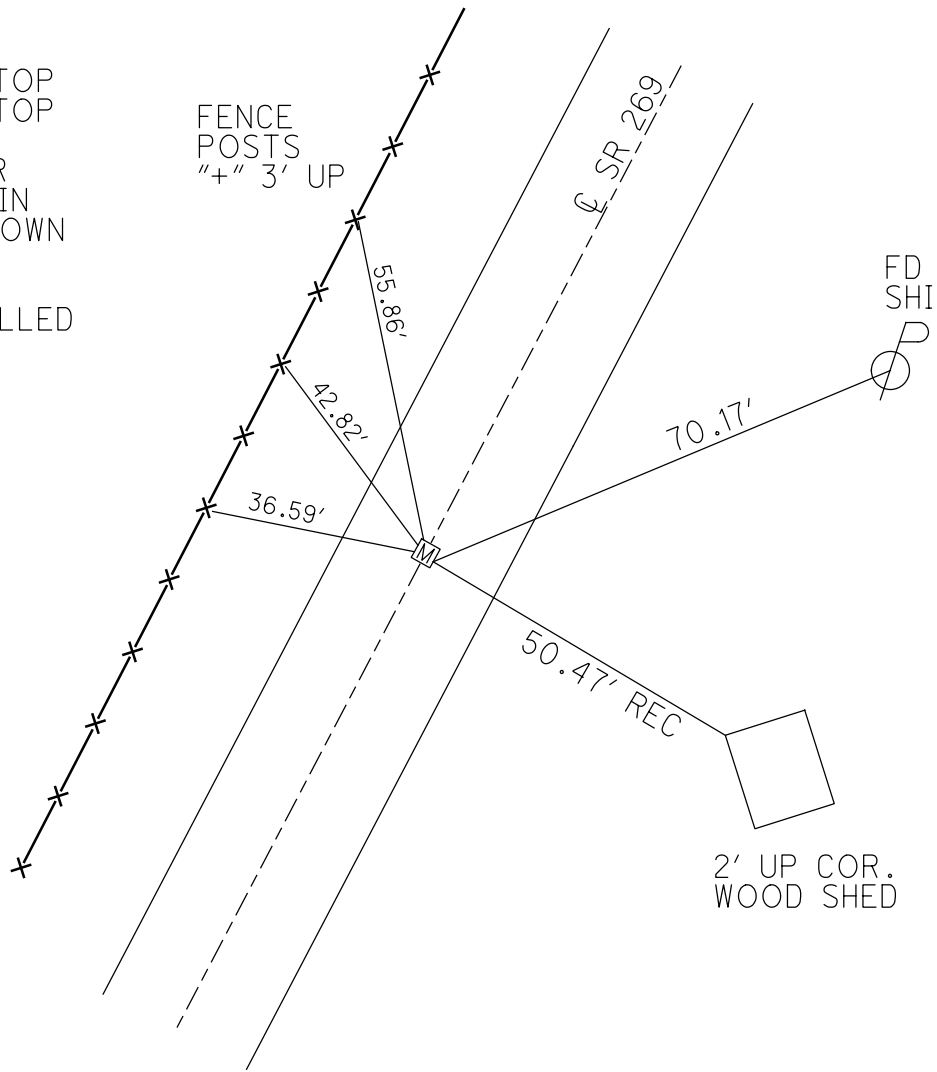
PERSONNEL \_\_\_\_\_ REFERENCE NO. 20 SHEET 9 OF 18  
 NOTES RHOADES DATE 12/4/14 ROUTE SR 269  
 H.C. WESTFALL WEATHER CLOUDY COUNTY OTTAWA  
 R.C. HOMAN TEMP. 28° TOWNSHIP DANBURY  
 \_\_\_\_\_ SECTION 4-21

TYPE MONUMENT \_\_\_\_\_ MON.BOX \_\_\_\_\_  
 ON SURFACE - ~~BELOW~~ \_\_\_\_\_ ON \_\_\_\_\_  
 LEFT - Q PAV'T - RIGHT \_\_\_\_\_ ON \_\_\_\_\_  
11.7' TO LT EDGE PAVEMENT  
 S.L.M. \_\_\_\_\_ 254+01.87  
 GRID: NORTHING: 682389.697 EASTING: 1880714.354

NOTE:  
 THIS MAP IS FOR ODOT PURPOSES ONLY  
 TO INDEX REFERENCE TIES, AND DOES NOT  
 REPRESENT TRUE LAND SUBDIVISION.



RECORD: T.S.  
 STA. 168+65.49  
 P.K./WASHER ATOP  
 P.K./WASHER ATOP  
 P.K.NAIL  
 FD P.K./WASHER  
 12/19/88, CRONIN  
 FD P.K., 0.3' DOWN  
 GPS, REF20  
 1/18/13, MC  
 MON.BOX INSTALLED  
 W/ 1" IPIN  
 GPS, NEWREF20

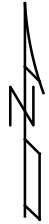
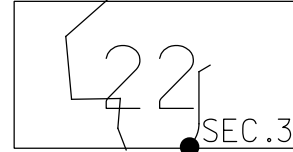


**O.D.O.T. DISTRICT 2 SURVEY OFFICE (USE ONLY)**

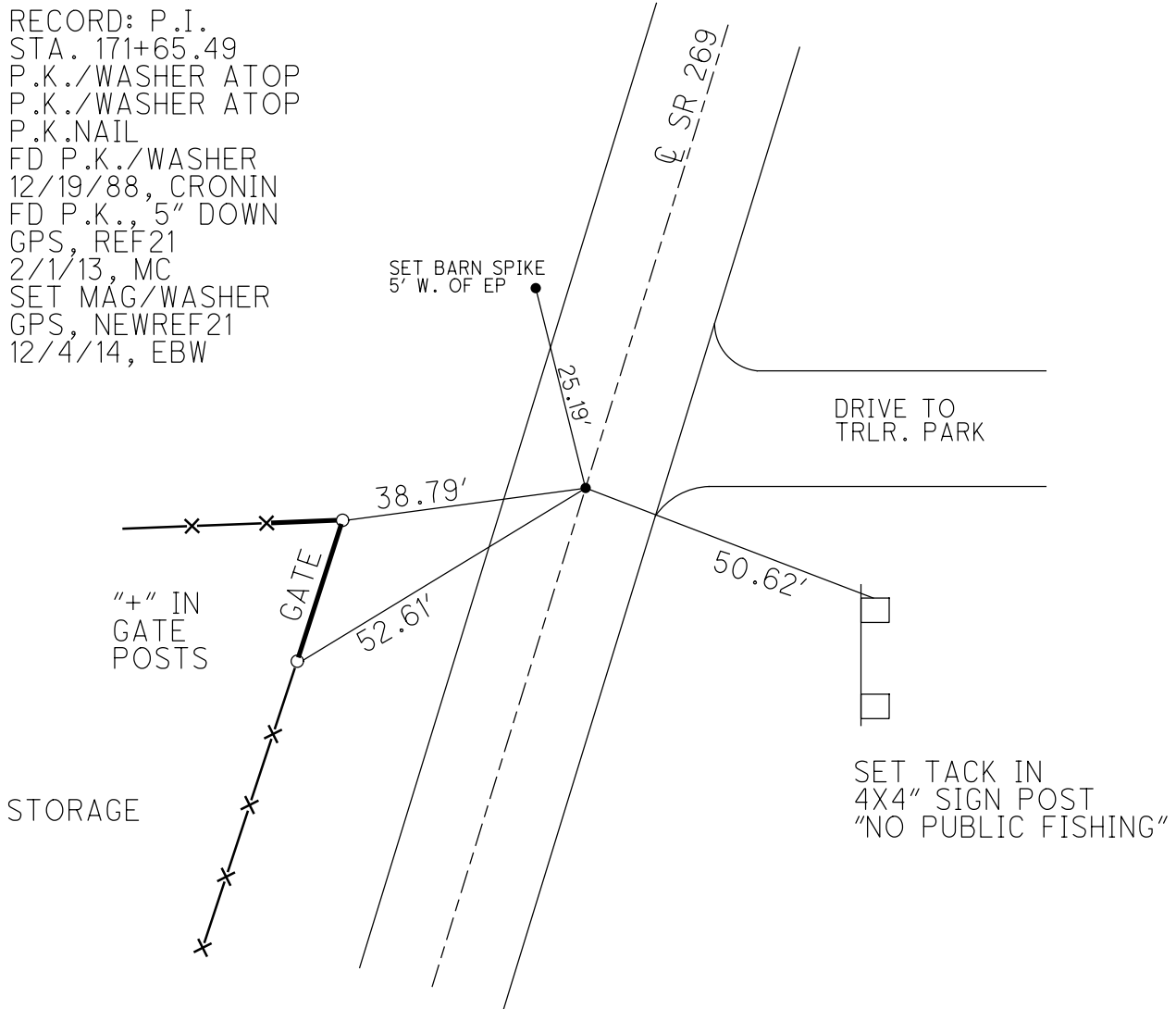
PERSONNEL	REFERENCE NO.	21	SHEET	10	OF	18
NOTES	RHOADES	DATE	6/25/14	ROUTE	SR 269	
H.C.	WESTFALL	WEATHER	OVERCAST	COUNTY	OTTAWA	
R.C.	THOMAS	TEMP.	65°	TOWNSHIP	DANBURY	
				SECTION	3-22	

NOTE:  
THIS MAP IS FOR ODOT PURPOSES ONLY  
TO INDEX REFERENCE TIES, AND DOES NOT  
REPRESENT TRUE LAND SUBDIVISION.

TYPE MONUMENT R.R.SPIKE  
~~ON SURFACE~~ - BELOW 5"  
 LEFT - CL PAV'T - RIGHT ON  
11.9' TO LT EDGE PAVEMENT  
 S.L.M. 256+01.93  
 GRID: NORTHING: 682389.697 EASTING: 1880714.354



RECORD: P.I.  
 STA. 171+65.49  
 P.K./WASHER ATOP  
 P.K./WASHER ATOP  
 P.K.NAIL  
 FD P.K./WASHER  
 12/19/88, CRONIN  
 FD P.K., 5" DOWN  
 GPS, REF21  
 2/1/13, MC  
 SET MAG/WASHER  
 GPS, NEWREF21  
 12/4/14, EBW

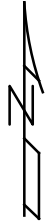
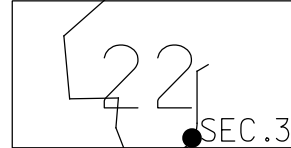


**O.D.O.T. DISTRICT 2 SURVEY OFFICE (USE ONLY)**

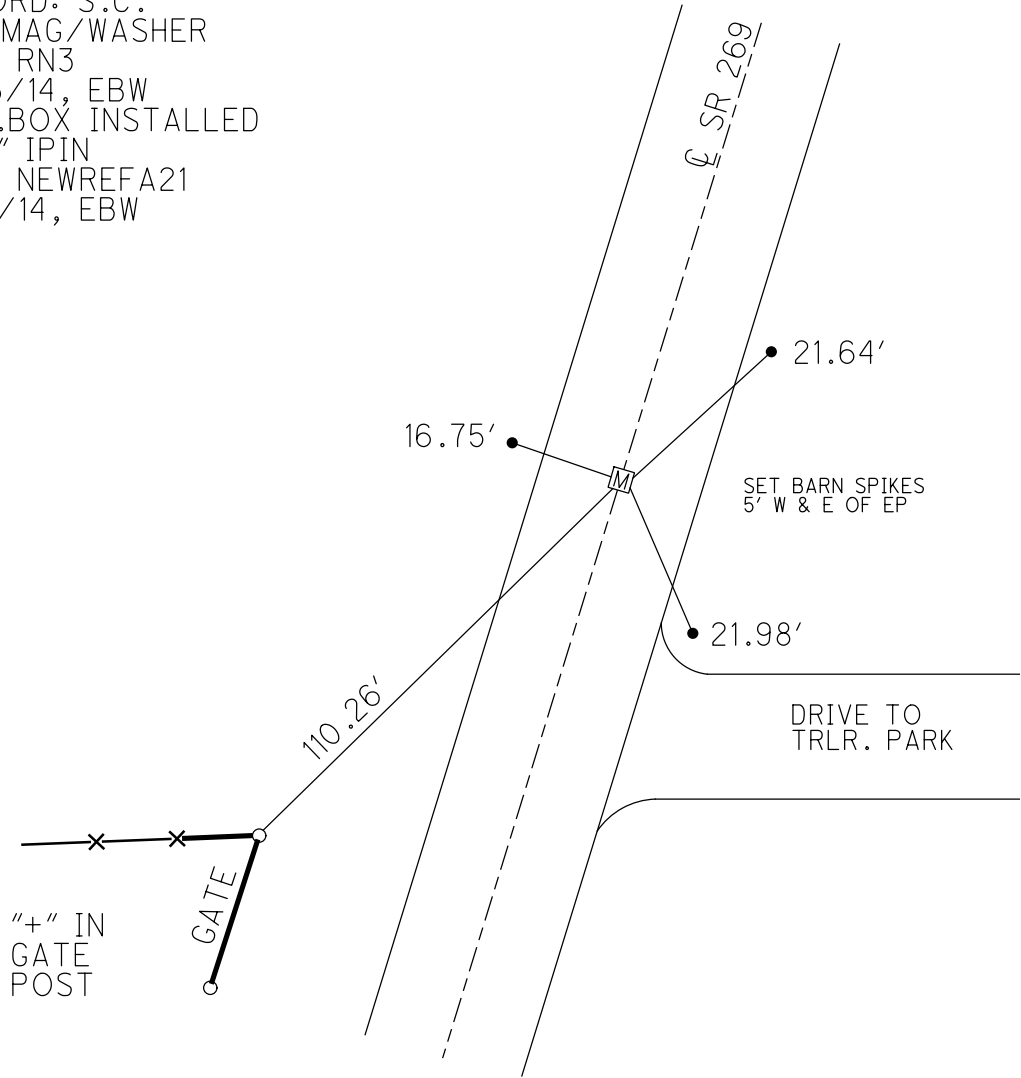
PERSONNEL \_\_\_\_\_ REFERENCE NO. 21 A SHEET 11 OF 18  
 NOTES RHOADES DATE 12/4/14 ROUTE SR 269  
 H.C. WESTFALL WEATHER CLOUDY COUNTY OTTAWA  
 R.C. HOMAN TEMP. 28° TOWNSHIP DANBURY  
 \_\_\_\_\_ SECTION 3-22

NOTE:  
THIS MAP IS FOR ODOT PURPOSES ONLY.  
TO INDEX REFERENCE TIES, AND DOES NOT  
REPRESENT TRUE LAND SUBDIVISION.

TYPE MONUMENT MON.BOX  
 ON SURFACE - ~~BELOW~~ ON  
 LEFT - Q PAV'T - RIGHT ON  
     TO      EDGE PAVEMENT  
 S.L.M. 257+01.87  
 GRID: NORTHING: 682476.207 EASTING: 1880744.882



RECORD: S.C.  
 SET MAG/WASHER  
 GPS, RN3  
 6/25/14, EBW  
 MON.BOX INSTALLED  
 W/ 1" IPIN  
 GPS, NEWREFA21  
 12/4/14, EBW

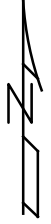
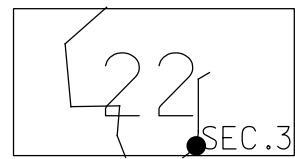


O.D.O.T. DISTRICT 2 SURVEY OFFICE (USE ONLY)

PERSONNEL \_\_\_\_\_ REFERENCE NO. 22 SHEET 12 OF 18  
 NOTES RHOADES DATE 12/4/14 ROUTE SR 269  
 H.C. WESTFALL WEATHER CLOUDY COUNTY OTTAWA  
 R.C. HOMAN TEMP. 28° TOWNSHIP DANBURY  
 \_\_\_\_\_ SECTION 3-22

NOTE:  
THIS MAP IS FOR ODOT PURPOSES ONLY  
TO INDEX REFERENCE TIES, AND DOES NOT  
REPRESENT TRUE LAND SUBDIVISION.

TYPE MONUMENT \_\_\_\_\_ MON.BOX \_\_\_\_\_  
 ON SURFACE - ~~BELOW~~ \_\_\_\_\_ ON \_\_\_\_\_  
~~LEFT~~ - Q PAV'T - RIGHT 27.6'  
39.5' RT TO RT EDGE PAVEMENT  
 S.L.M. 258+71.85  
 GRID: NORTHING: 682632.635 EASTING: 1880825.033

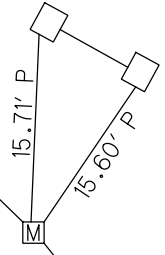


SET SHI  
TRIPLE  
12" ELM



102.61' P

SET SHI'S IN  
4X4" SIGN POSTS  
'EAST OAK HARBOR'

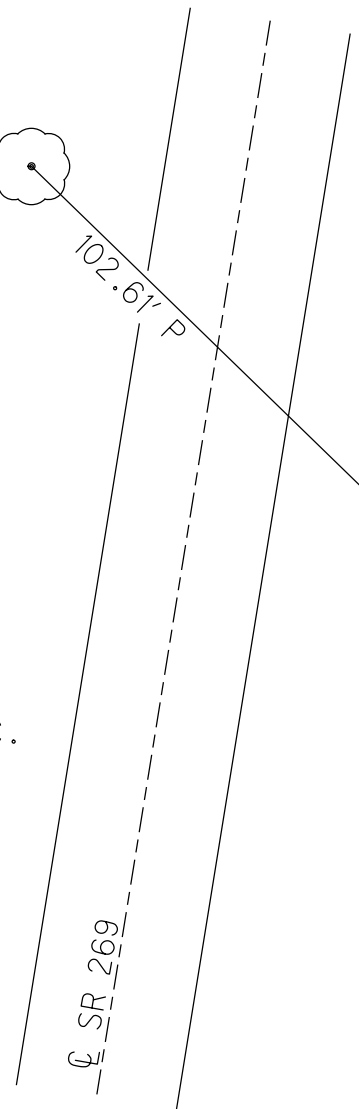


20.12' P

SET BARN  
SPIKE

RECORD: P.I.  
 STA. 173+40.76 - RELOC.  
 Q SURVEY & CONST.  
 FD IPIN  
 12/19/88, CRONIN  
 SET IPIN  
 3/20/13, MC  
 FD IPIN W/RED CAP  
 6/25/14  
 MON.BOX INSTALLED  
 W/1" IPIN  
 GPS, NEWREF22  
 12/4/14, EBW

Q SR 269

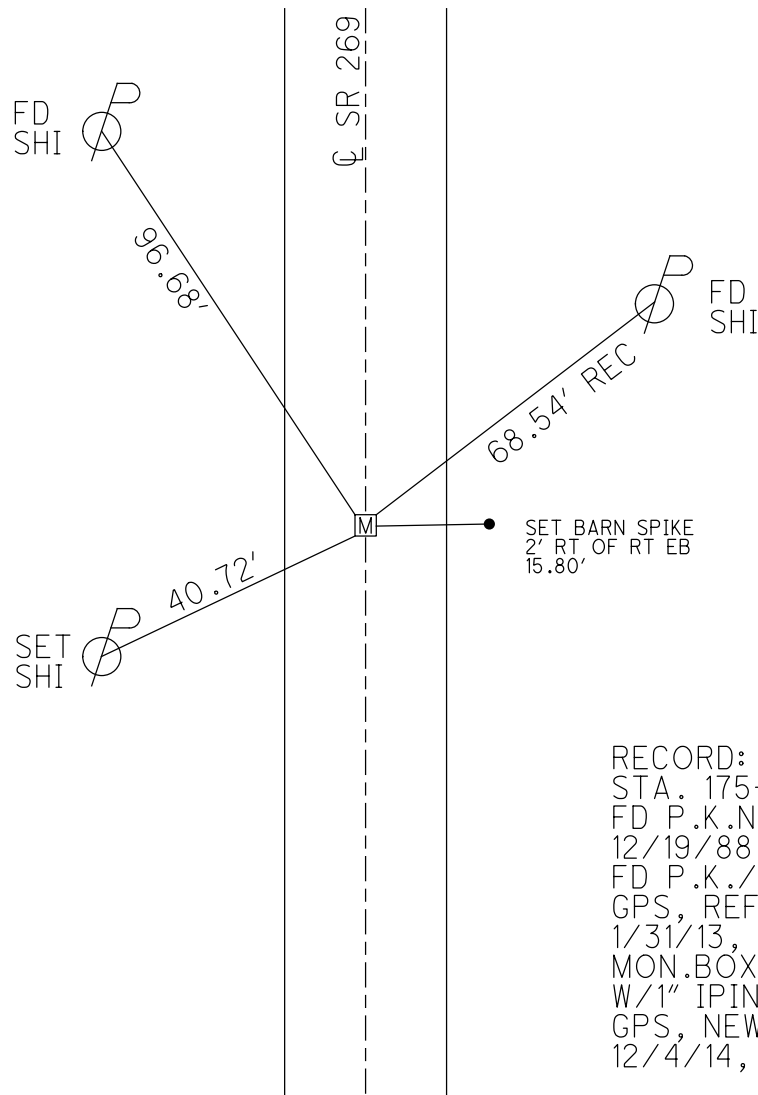
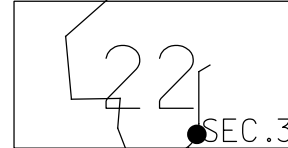


O.D.O.T. DISTRICT 2 SURVEY OFFICE (USE ONLY)

PERSONNEL \_\_\_\_\_ REFERENCE NO. 23 SHEET 13 OF 18  
 NOTES RHOADES DATE 12/4/14 ROUTE SR 269  
 H.C. WESTFALL WEATHER CLOUDY COUNTY OTTAWA  
 R.C. HOMAN TEMP. 28° TOWNSHIP DANBURY  
 \_\_\_\_\_ SECTION 3-22  
 \_\_\_\_\_

NOTE:  
 THIS MAP IS FOR ODOT PURPOSES ONLY  
 TO INDEX REFERENCE TIES, AND DOES NOT  
 REPRESENT TRUE LAND SUBDIVISION.

TYPE MONUMENT MON.BOX  
 ON SURFACE - ~~BELOW~~ ON  
 LEFT - Q PAV'T - RIGHT ON  
12.3' TO LT EDGE PAVEMENT  
 S.L.M. 260+40.25  
 GRID: NORTHING: 682808.038 EASTING: 1880809.033



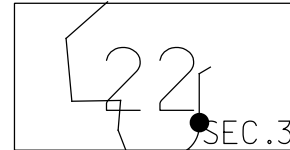
RECORD: C.S.  
 STA. 175+04.24  
 FD P.K.NAIL  
 12/19/88, CRONIN  
 FD P.K./WASHER  
 GPS, REF23  
 1/31/13, MC  
 MON.BOX INSTALLED  
 W/1" IPIN  
 GPS, NEWREF23  
 12/4/14, EBW

**O.D.O.T. DISTRICT 2 SURVEY OFFICE (USE ONLY)**

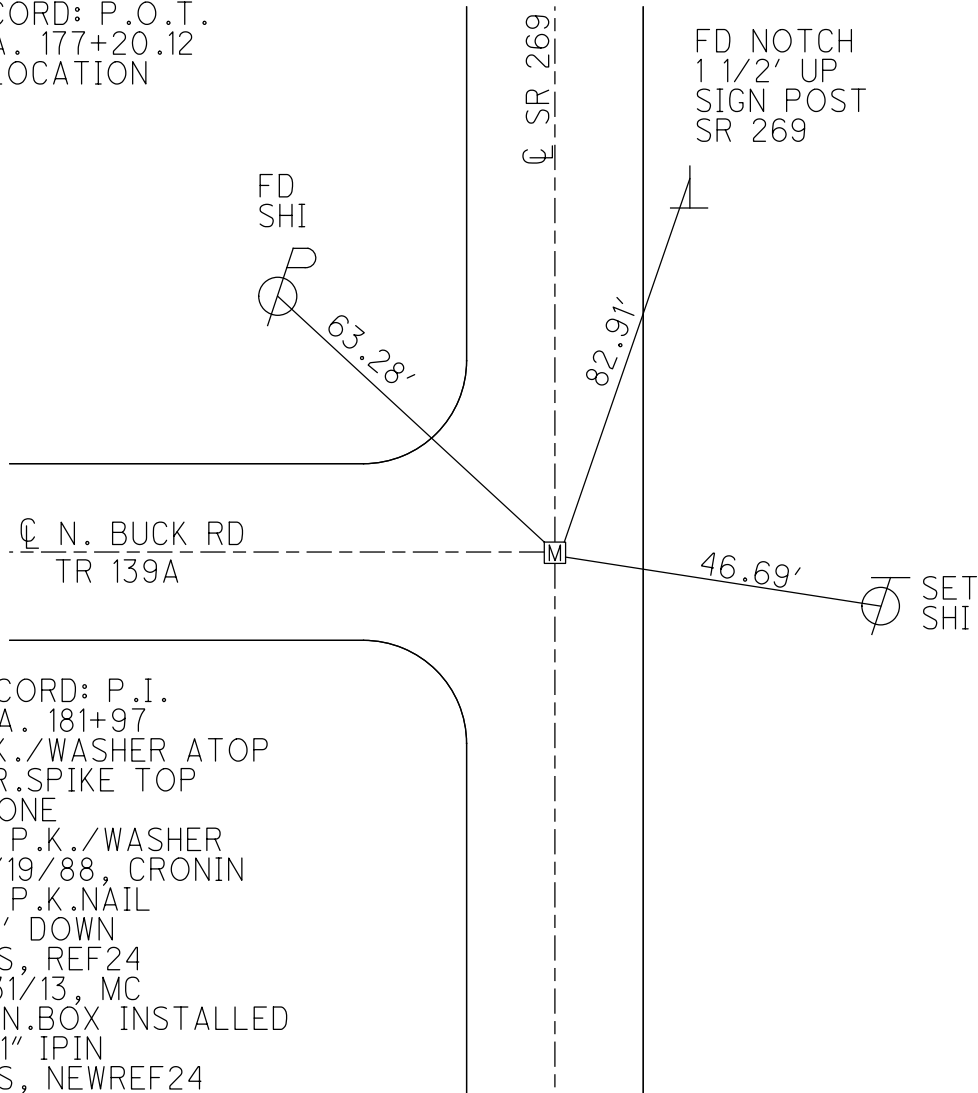
PERSONNEL \_\_\_\_\_ REFERENCE NO. 24 SHEET 14 OF 18  
 NOTES RHOADES DATE 12/4/14 ROUTE SR 269  
 H.C. WESTFALL WEATHER CLOUDY COUNTY OTTAWA  
 R.C. HOMAN TEMP. 28° TOWNSHIP DANBURY  
 \_\_\_\_\_ SECTION 3-22

NOTE:  
THIS MAP IS FOR ODOT PURPOSES ONLY  
TO INDEX REFERENCE TIES, AND DOES NOT  
REPRESENT TRUE LAND SUBDIVISION.

TYPE MONUMENT MON.BOX  
 ON SURFACE - ~~BELOW~~ ON  
 LEFT - Q PAV'T - RIGHT ON  
11.4' TO RT EDGE PAVEMENT  
 S.L.M. 262+55.90  
 GRID: NORTHING: 683023.107 EASTING: 1880812.838



RECORD: P.O.T.  
 STA. 177+20.12  
 RELOCATION



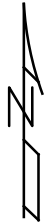
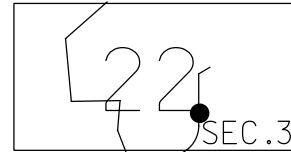
RECORD: P.I.  
 STA. 181+97  
 P.K./WASHER ATOP  
 R.R.SPIKE TOP  
 STONE  
 FD P.K./WASHER  
 12/19/88, CRONIN  
 FD P.K.NAIL  
 0.1' DOWN  
 GPS, REF24  
 1/31/13, MC  
 MON.BOX INSTALLED  
 W/1" IPIN  
 GPS, NEWREF24

O.D.O.T. DISTRICT 2 SURVEY OFFICE (USE ONLY)

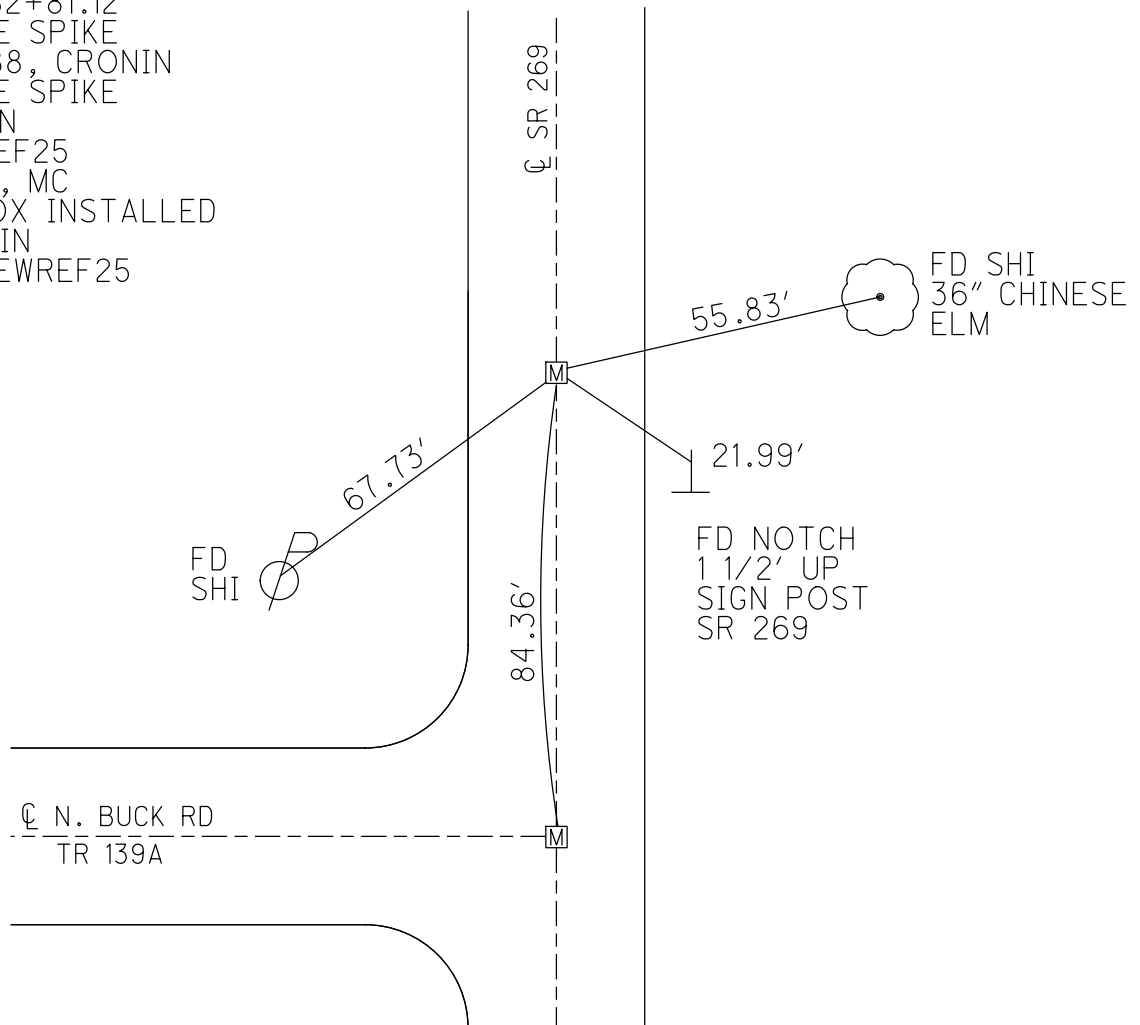
PERSONNEL \_\_\_\_\_ REFERENCE NO. 25 SHEET 15 OF 18  
 NOTES RHOADES DATE 12/4/14 ROUTE SR 269  
 H.C. WESTFALL WEATHER CLOUDY COUNTY OTTAWA  
 R.C. HOMAN TEMP. 28° TOWNSHIP DANBURY  
 \_\_\_\_\_ SECTION 3-22

NOTE:  
 THIS MAP IS FOR ODOT PURPOSES ONLY  
 TO INDEX REFERENCE TIES, AND DOES NOT  
 REPRESENT TRUE LAND SUBDIVISION.

TYPE MONUMENT MON.BOX  
 ON SURFACE - BELOW ON  
 LEFT - ℄ PAV'T - RIGHT ON  
11.9' TO RT EDGE PAVEMENT  
 S.L.M. 263+40.25  
 GRID: NORTHING: 683107.424 EASTING: 1880810.028



RECORD: S.T.  
 STA. 182+81.12  
 FD MINE SPIKE  
 12/19/88, CRONIN  
 FD MINE SPIKE  
 4" DOWN  
 GPS, REF25  
 1/31/13, MC  
 MON.BOX INSTALLED  
 W/1" IPIN  
 GPS, NEWREF25

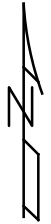
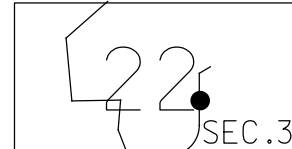


O.D.O.T. DISTRICT 2 SURVEY OFFICE (USE ONLY)

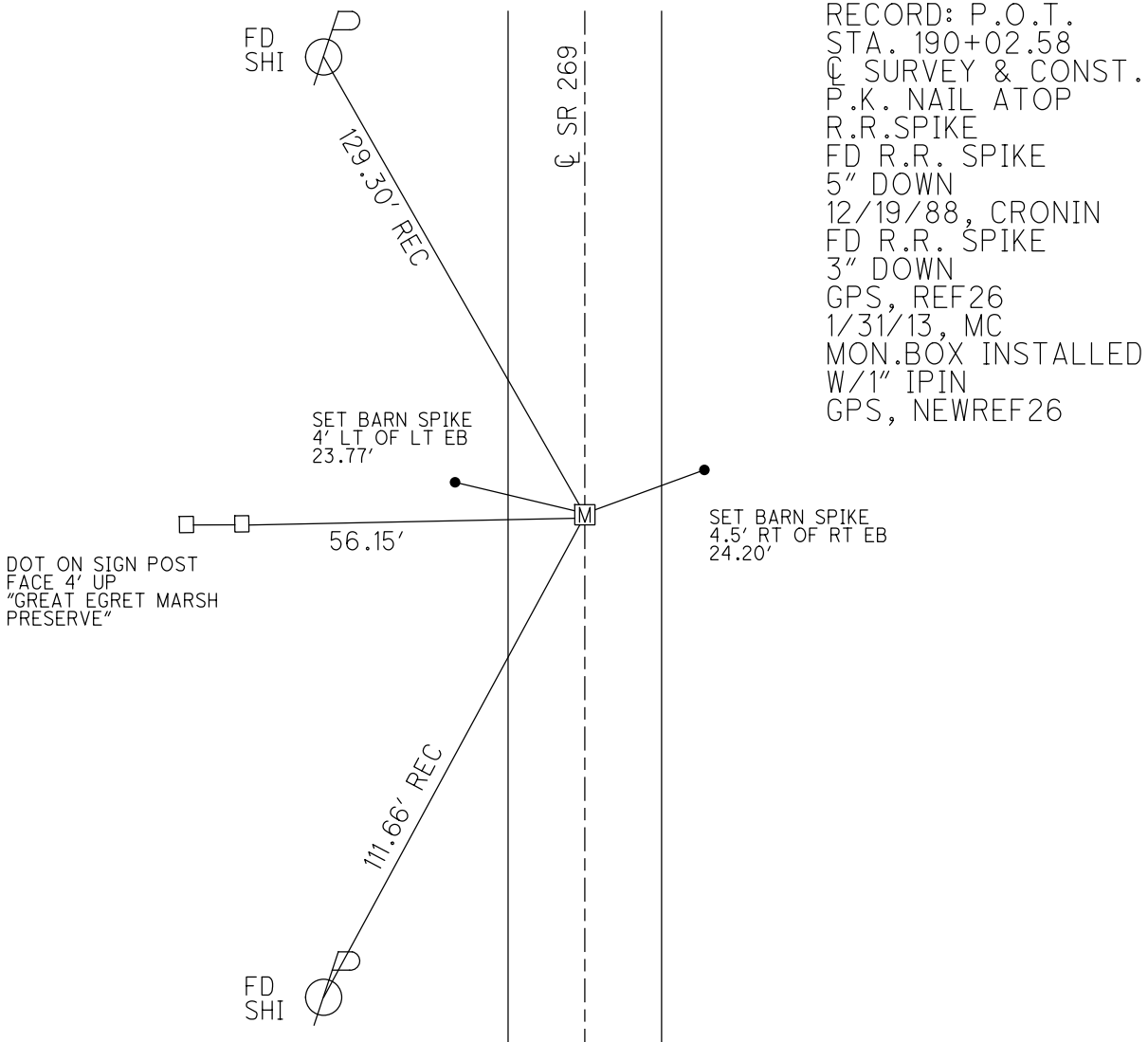
PERSONNEL \_\_\_\_\_ REFERENCE NO. 26 SHEET 16 OF 18  
 NOTES RHOADES DATE 12/4/14 ROUTE SR 269  
 H.C. WESTFALL WEATHER CLOUDY COUNTY OTTAWA  
 R.C. HOMAN TEMP. 28° TOWNSHIP DANBURY  
 \_\_\_\_\_ SECTION 3-22

TYPE MONUMENT MON.BOX  
 ON SURFACE - ~~BELOW~~ ON  
 LEFT - Q PAV'T - RIGHT ON  
- TO - EDGE PAVEMENT  
 S.L.M. 270+61.39

NOTE:  
 THIS MAP IS FOR ODOT PURPOSES ONLY  
 TO INDEX REFERENCE TIES, AND DOES NOT  
 REPRESENT TRUE LAND SUBDIVISION.



GRID: NORTHING: 683828.297 EASTING: 1880788.028





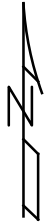
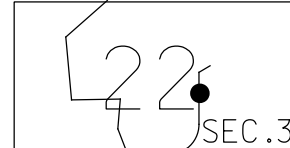
O.D.O.T. DISTRICT 2 SURVEY OFFICE (USE ONLY)

PERSONNEL \_\_\_\_\_ REFERENCE NO. 26 C SHEET 17 OF 18

NOTES RHOADES DATE 12/4/14 ROUTE SR 269  
 H.C. WESTFALL WEATHER SUNNY COUNTY OTTAWA  
 R.C. HOMAN TEMP. 32° TOWNSHIP DANBURY  
 \_\_\_\_\_ SECTION 3-22

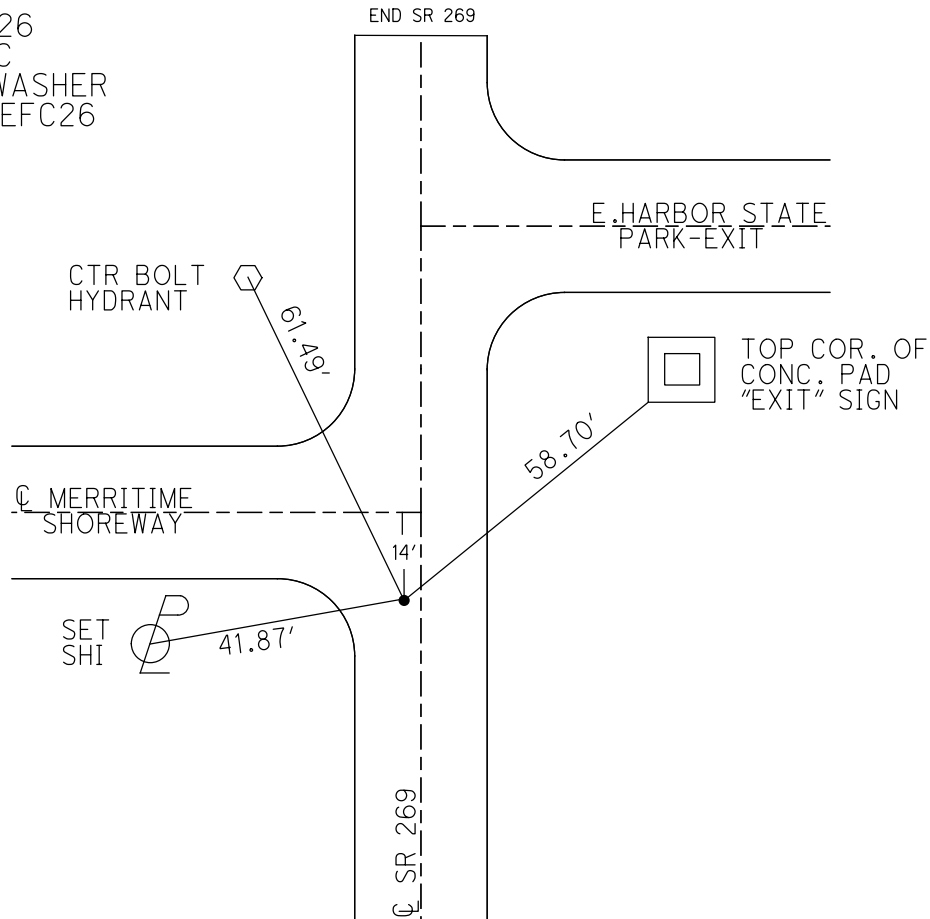
NOTE:  
 THIS MAP IS FOR ODOT PURPOSES ONLY  
 TO INDEX REFERENCE TIES, AND DOES NOT  
 REPRESENT TRUE LAND SUBDIVISION.

TYPE MONUMENT MAG/WASHER  
 ON SURFACE - ~~BELOW~~ ON  
 LEFT - Q PAV'T - ~~RIGHT~~ 1.8'  
TO EDGE PAVEMENT  
 S.L.M. 286+52.50



GRID: NORTHING: 685418.700 EASTING: 1880737.057

RECORD:  
 FD 1/2" IPIN  
 8" DOWN  
 GPS, REFC26  
 1/31/13, MC  
 SET MAG/WASHER  
 GPS, NEWREFC26



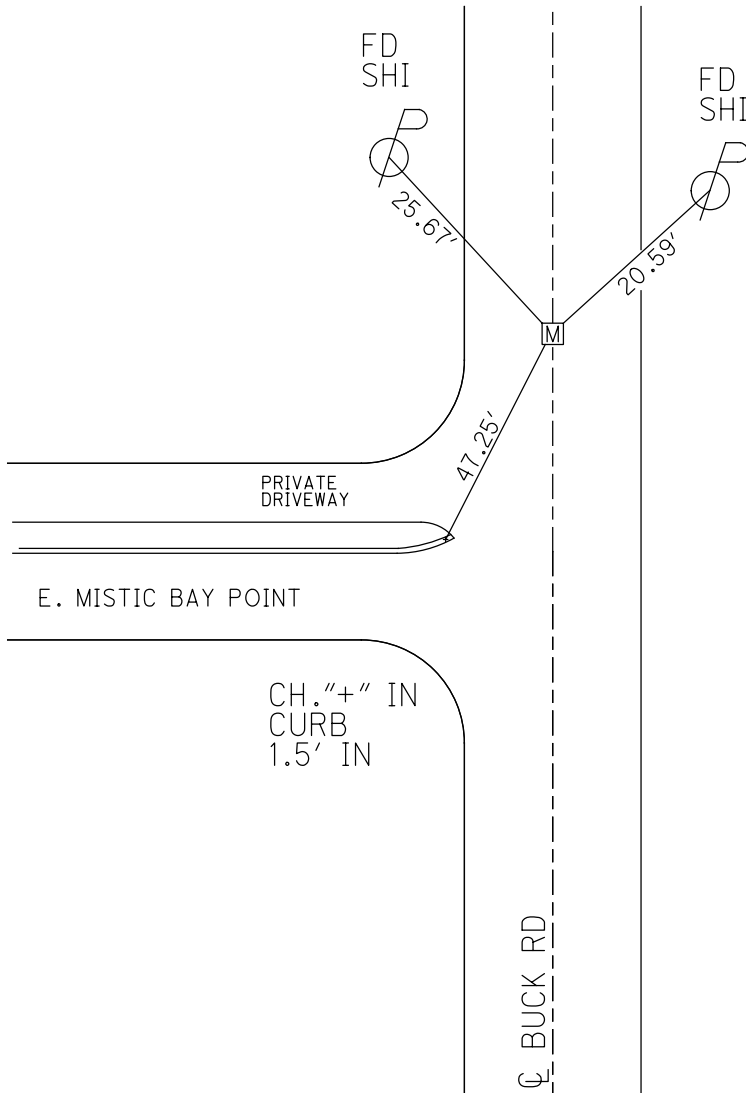
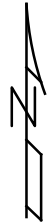
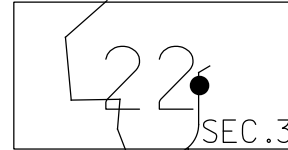
O.D.O.T. DISTRICT 2 SURVEY OFFICE (USE ONLY)

PERSONNEL \_\_\_\_\_ REFERENCE NO. 27 SHEET 18 OF 18

NOTES RHOADES DATE 12/4/14 ROUTE N. OF SR 269  
 H.C. WESTFALL WEATHER SUNNY COUNTY OTTAWA  
 R.C. HOMAN TEMP. 32° TOWNSHIP DANBURY  
 \_\_\_\_\_ SECTION 3-22

NOTE:  
 THIS MAP IS FOR ODOT PURPOSES ONLY  
 TO INDEX REFERENCE TIES, AND DOES NOT  
 REPRESENT TRUE LAND SUBDIVISION.

TYPE MONUMENT MON.BOX  
 ON SURFACE - ~~BELOW~~ ON  
 LEFT - CL PAV'T - RIGHT ON  
TO - EDGE PAVEMENT  
 S.L.M. 293+15.07  
 GRID: NORTHING: 686080.902 EASTING: 1880718.513



RECORD: P.I.  
 STA. 212+57.09  
 R.R.SPIKE ATOP  
 MINE SPIKE  
 FD R.R. SPIKE  
 12/19/88, CRONIN  
 FD R.R. SPIKE  
 GPS, REF27  
 1/31/13, MC  
 MON.BOX INSTALLED  
 W/1" IPIN  
 GPS, NEWREF27