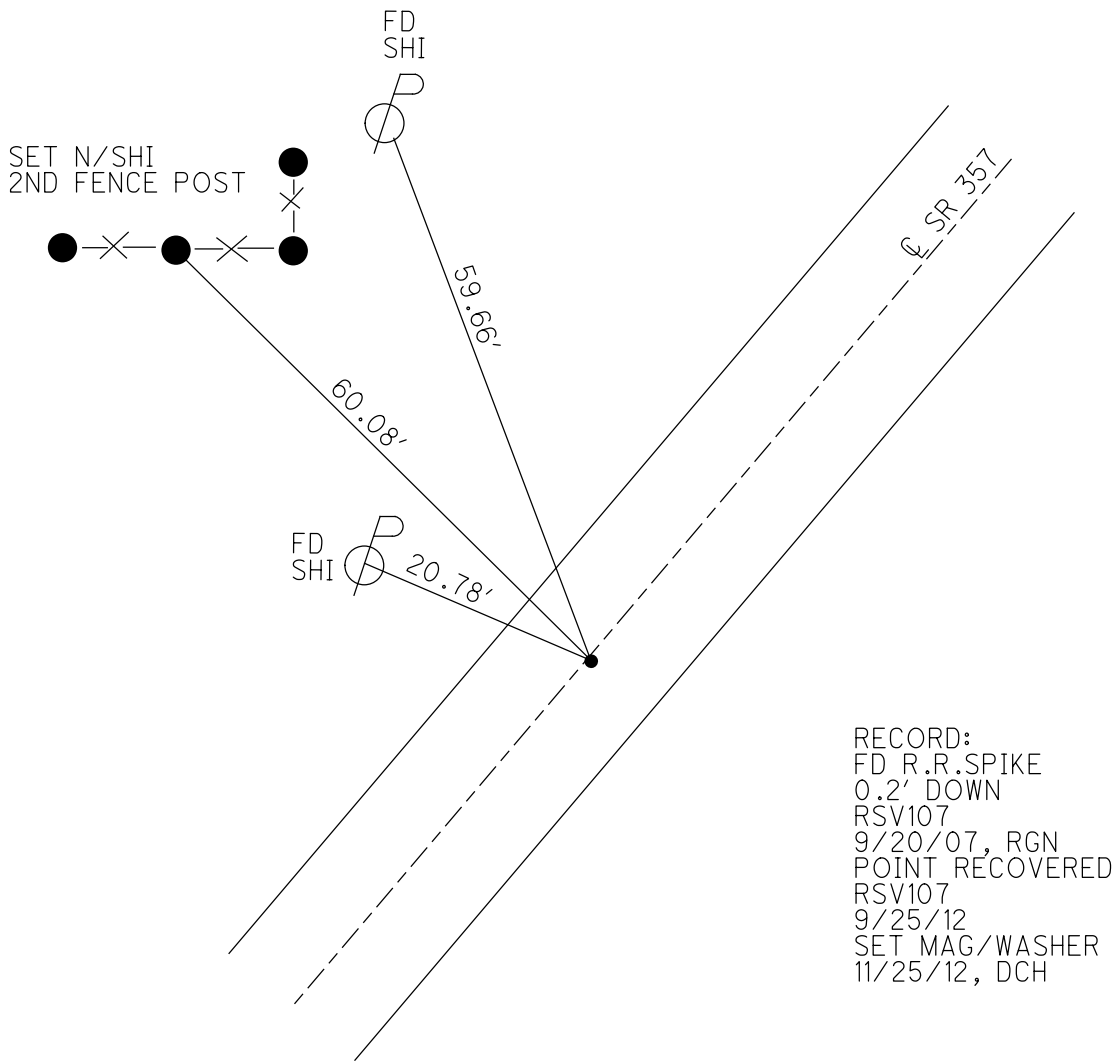
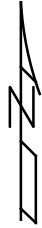


O.D.O.T. DISTRICT 2 SURVEY OFFICE (USE ONLY)

PERSONNEL \_\_\_\_\_ REFERENCE NO. 10 SHEET 18 OF 27  
 NOTES HOMAN DATE 11/25/12 ROUTE SR 357  
 H.C. HOMAN WEATHER PTLY CLOUDY COUNTY OTTAWA  
 R.C. ROUSOS TEMP. 53° SOUTH BASS  
 \_\_\_\_\_ ISLAND  
 DWG BY RHOADES PID 25525

TYPE MONUMENT R.R.SPIKE  
~~ON SURFACE~~ - BELOW 0.2'  
 OFFSET  $\text{C}$  PAVEMENT 0.5'  $\text{L}$  :  $\text{RT}$   
6.8' TO RT EDGE PAVEMENT  
 STATION: 108+95.04

HORIZ.DATUM: NAD 1983 GEOID: 2003  
 GRID: NORTHING: 727212.094 EASTING: 1886504.495



RECORD:  
 FD R.R.SPIKE  
 0.2' DOWN  
 RSV107  
 9/20/07, RGN  
 POINT RECOVERED  
 RSV107  
 9/25/12  
 SET MAG/WASHER  
 11/25/12, DCH

# O.D.O.T. DISTRICT 2 SURVEY OFFICE

PERSONNEL \_\_\_\_\_ REFERENCE NO. \_\_\_\_\_ SHEET \_\_\_\_\_ OF \_\_\_\_\_

NOTES Huss

H.C. Ryan DATE 9-20-07 ROUTE 357

R.C. Huss WEATHER Clear Fair COUNTY OTT

TEMP. +82°F TOWNSHIP \_\_\_\_\_

SECTION \_\_\_\_\_

T \_\_\_\_\_ R \_\_\_\_\_

TYPE MONUMENT RRSK

ON SURFACE - BELOW 0.2 below

LEFT - & PAW'T. - RIGHT 0.5' Rt

6.9 TO Rt. EDGE PAVEMENT

S.L.M. \_\_\_\_\_

