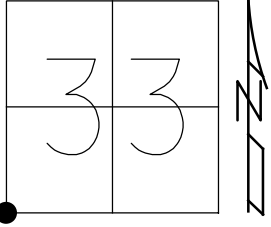


O.D.O.T. DISTRICT 2 SURVEY OFFICE (USE ONLY)

PERSONNEL _____ REFERENCE NO. 33 A SHEET 36 OF 36
 NOTES RHOADES DATE 10/7/20 ROUTE SR 579
 H.C. AUBLE WEATHER SUNNY COUNTY OTTAWA
 R.C. O'DONNELL TEMP. 64° TOWNSHIP BENTON
 DWG BY RHOADES PID 95759 SECTION 33
 T 8 N R 14 E

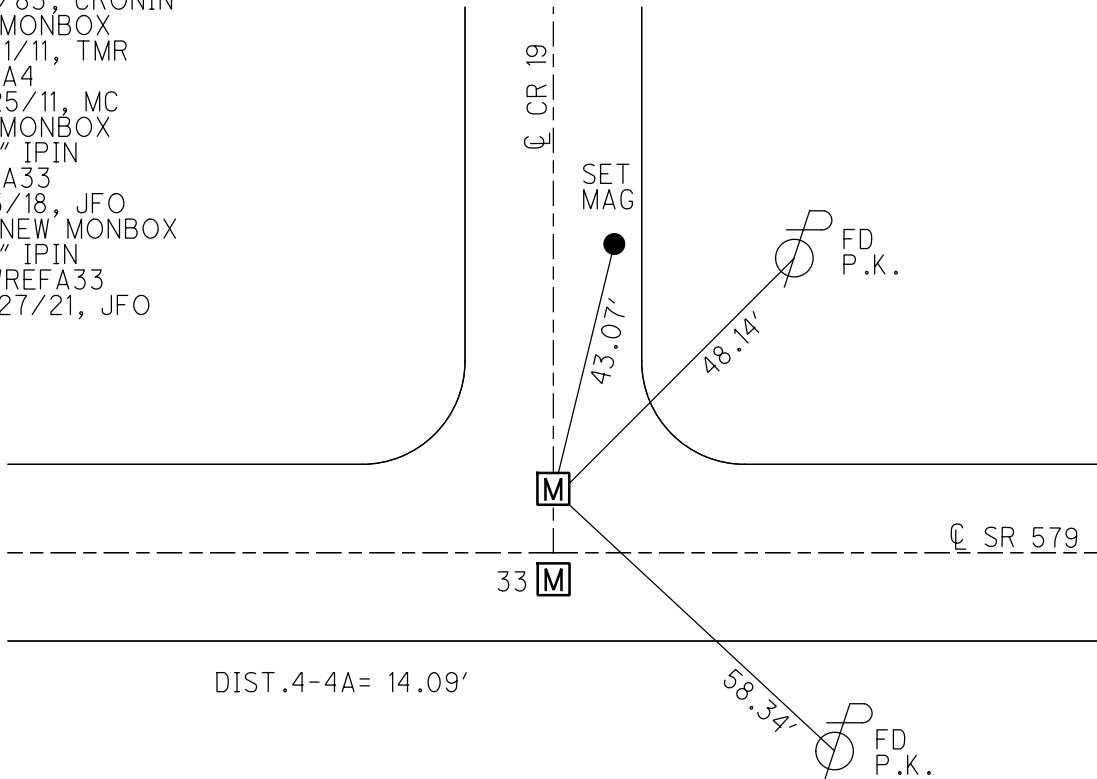
TYPE MONUMENT MONBOX W/1" IPIN
 ON SURFACE - ~~BELOW~~ ON _____
 OFFSET $\frac{C}{E}$ PAVEMENT 10.4' LT : ~~RT~~
 - TO - EDGE PAVEMENT
 STATION: 426+24.46

HORZ. DATUM: NAD83 2011 GEOID: NAVD88 2012A
 GRID: NORTHING: 706747.984 EASTING: 1760634.039

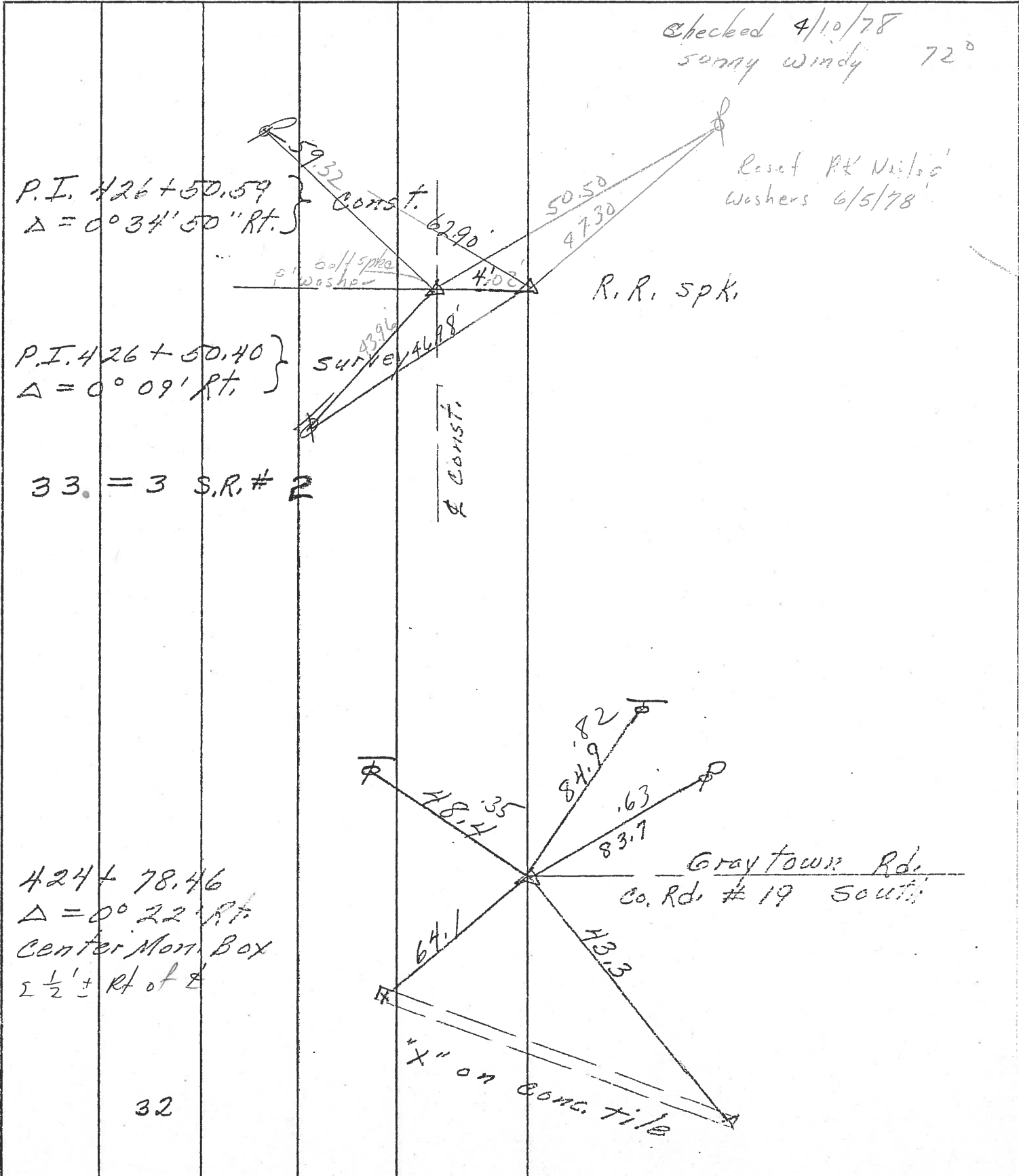


RECORD: P.I.
 STA. 426+54.40
 STA. 68+95.30
 SR 2
 FD P.K. SHANK
 ATOP R.R. SPIKE
 1/4/83, CRONIN
 FD MONBOX
 6/21/11, TMR
 REFA4
 11/25/11, MC
 FD MONBOX
 W/1" IPIN
 REFA33
 11/5/18, JFO
 FD NEW MONBOX
 W/1" IPIN
 NEWREFA33
 10/27/21, JFO

NOTE: OTT 2 REF 4A



PERSONNEL	TITLE	PERSONNEL	TITLE	COUNTY	DATE
				Ottawa	7-19-71
				S. R. 579	WEATHER Fair
				SEC. 5 E 32	TEMP. 60°
DESCRIPTION: Benton Twp.				JOB NO.	
LEFT		CENTER LINE		RIGHT	



PERSONNEL TITLE PERSONNEL TITLE

COUNTY Ottawa DATE 9-19-71

S. R. 579 WEATHER Fair

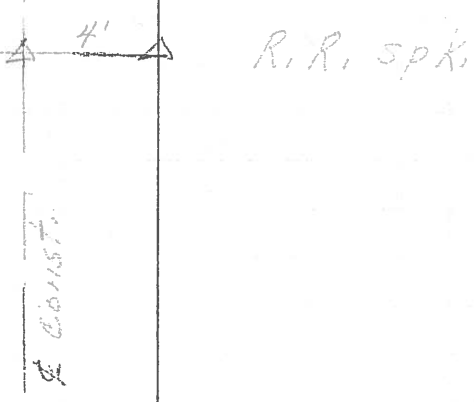
SEC. 5 E 32 TEMP. 60°

DESCRIPTION Benton Twp. LEFT CENTER LINE RIGHT JOB NO.

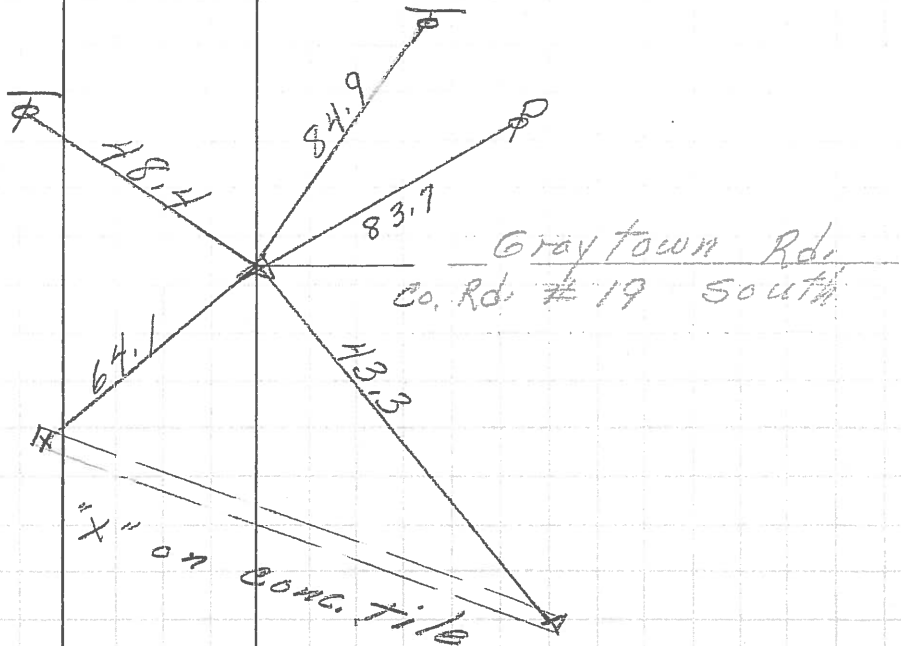
P.I. 426+50.59 } Const.
Δ = 0° 34' 50" Rt.

P.I. 426+50.40 } survey
Δ = 0° 09' Rt.

33. = 3 S.R. # 2



424+78.46
Δ = 0° 22' Rt.
Center Mon. Box



32

PERSONNEL	TITLE	PERSONNEL	TITLE	COUNTY	Ottawa	DATE	9-19-68
Schneider				S. R.	579	WEATHER	Fair
Mosser				SEC.	Wood Co. Line - East	TEMP.	60°
Barbour							
Potts							

DESCRIPTION Ties for Control Points JOB NO. _____

