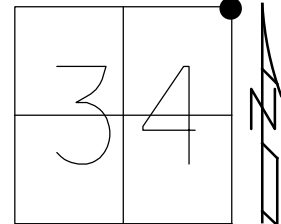


O.D.O.T. DISTRICT 2 SURVEY OFFICE (USE ONLY)

PERSONNEL _____ REFERENCE NO. 19 SHEET 19 OF 30
 NOTES RHOADES DATE 2/26/18 ROUTE SR 590
 H.C. O'DONNELL WEATHER SUNNY COUNTY OTTAWA
 R.C. RHOADES TEMP. 41° TOWNSHIP BENTON
 DWG BY MILLER PID 101240 SECTION 34
 T 7 N R 14 E

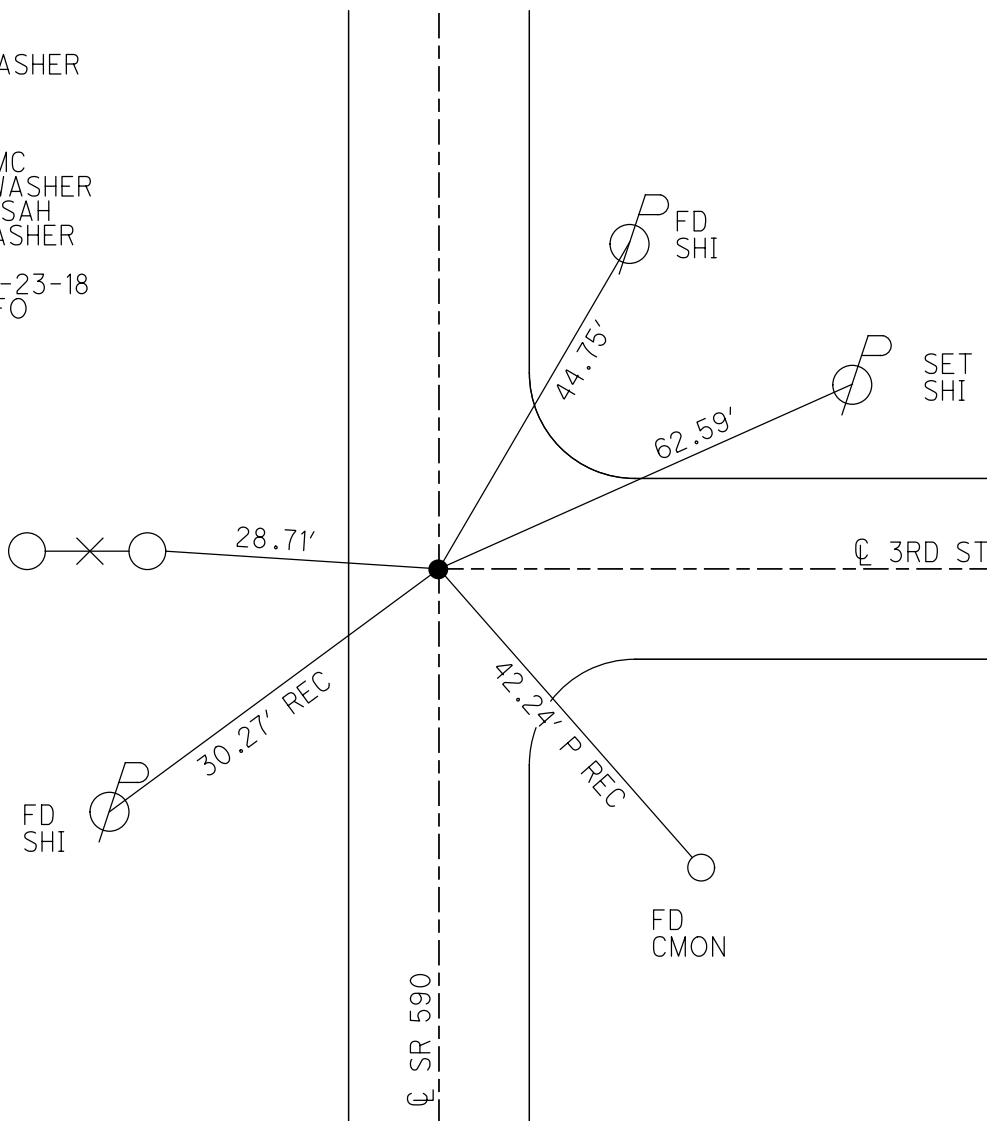
TYPE MONUMENT MAG/WASHER
 ON SURFACE - ~~BELOW~~ ON _____
 OFFSET $\text{\textcircled{C}}$ PAVEMENT 5.2' LT : ~~RT~~
4' TO LT EDGE PAVEMENT
 STATION: 266+60



HORIZ.DATUM: NAD83-2011 GEOID: NAVD88-2012A
 GRID: NORTHING: 680058.606 EASTING: 1770734.601

RECORD:
 FD P.K./WASHER
 0.3' DOWN
 6/9/08
 SV119
 8/13/08, MC
 SET MAG/WASHER
 6/09/09, SAH
 FD MAG/WASHER
 REF19
 2-26-18, 4-23-18
 10-4-18, JFO

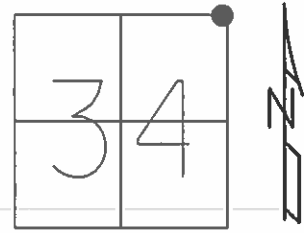
FD SHI
 FEN POST



O.D.O.T. DISTRICT 2 SURVEY OFFICE (USE ONLY)

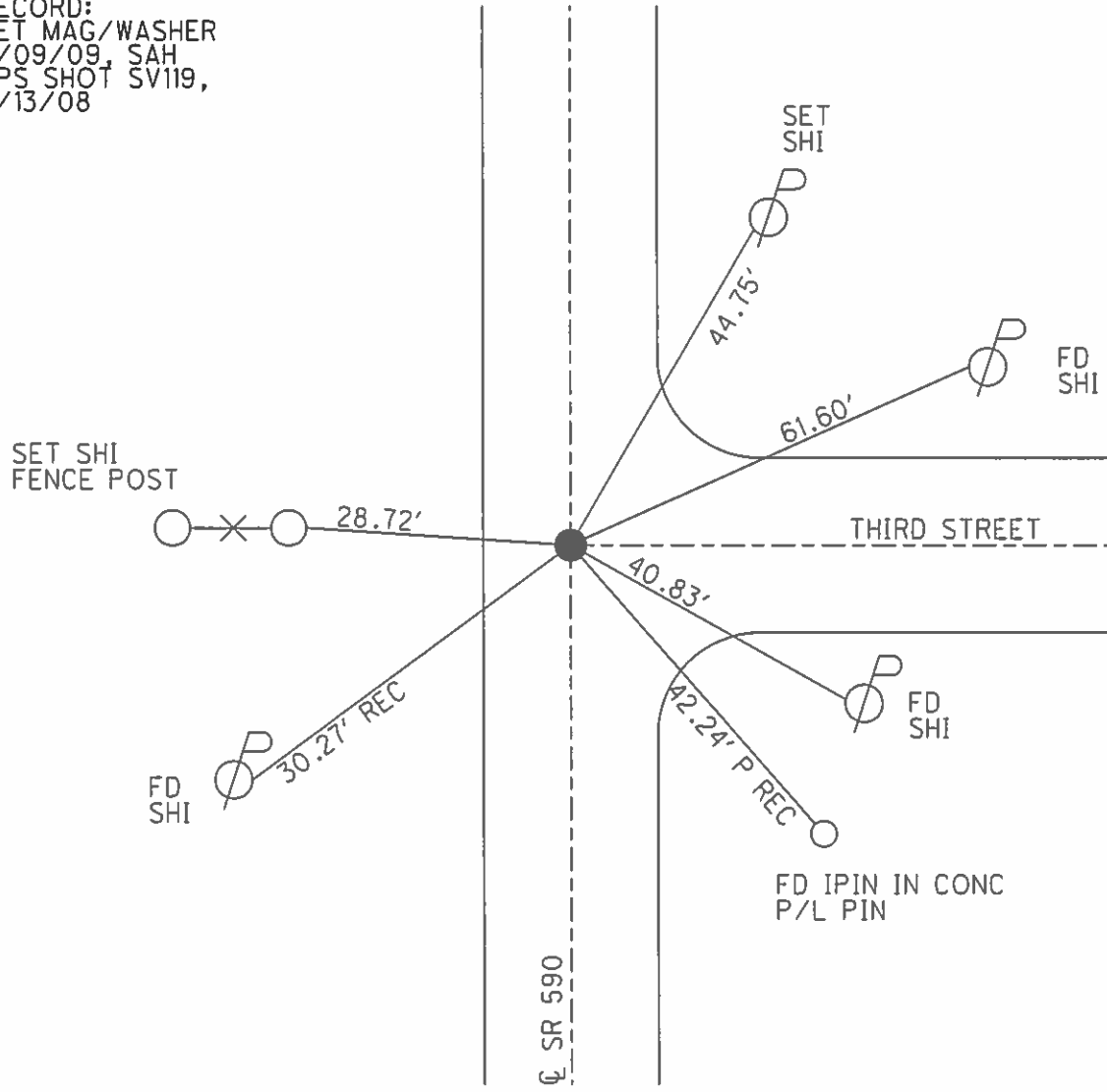
PERSONNEL _____ REFERENCE NO. 19 SHEET 19 OF 30
 NOTES CANTERBURY DATE 6/9/08 ROUTE SR 590
 H.C. HUSS WEATHER CLEAR COUNTY OTTAWA
 R.C. CANTERBURY TEMP. 80° TOWNSHIP BENTON
 _____ SECTION 34
 _____ T 7 N R 14 E

TYPE MONUMENT _____ P.K./WASHER _____
~~ON SURFACE~~ - BELOW 0.3'
 LEFT - ☉ PAV'T - ~~RIGHT~~ 5.2'
4.0' TO LT EDGE PAVEMENT
 S.L.M. _____ 266+60



GRID: NORTHING: 680058.526 EASTING: 1770734.593

RECORD:
 SET MAG/WASHER
 6/09/09, SAH
 GPS SHOT SV119,
 8/13/08



O.D.O.T. DISTRICT 2 SURVEY OFFICE (Use Only)

PERSONNEL _____

REFERENCE NO. 19

SHEET _____ OF _____

NOTES CANTERBURY

DATE 6-9-08

ROUTE S.R. 590

H.C. HUSS

WEATHER CLEAR

COUNTY OTTAWA

R.C. CANTERBURY

TEMP. +80

TOWNSHIP BENTON

SECTION 26,27,34&35

T 7 N R 14 E

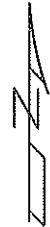
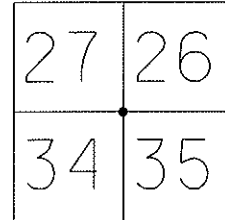
TYPE MONUMENT P.K./WASHER

~~ON SURFACE~~ - BELOW 0.3' DOWN

LEFT - 4.0' TO LT ~~RIGHT~~ 5.2' LT

4.0' TO LT EDGE PAVEMENT

S.L.M. 266+60

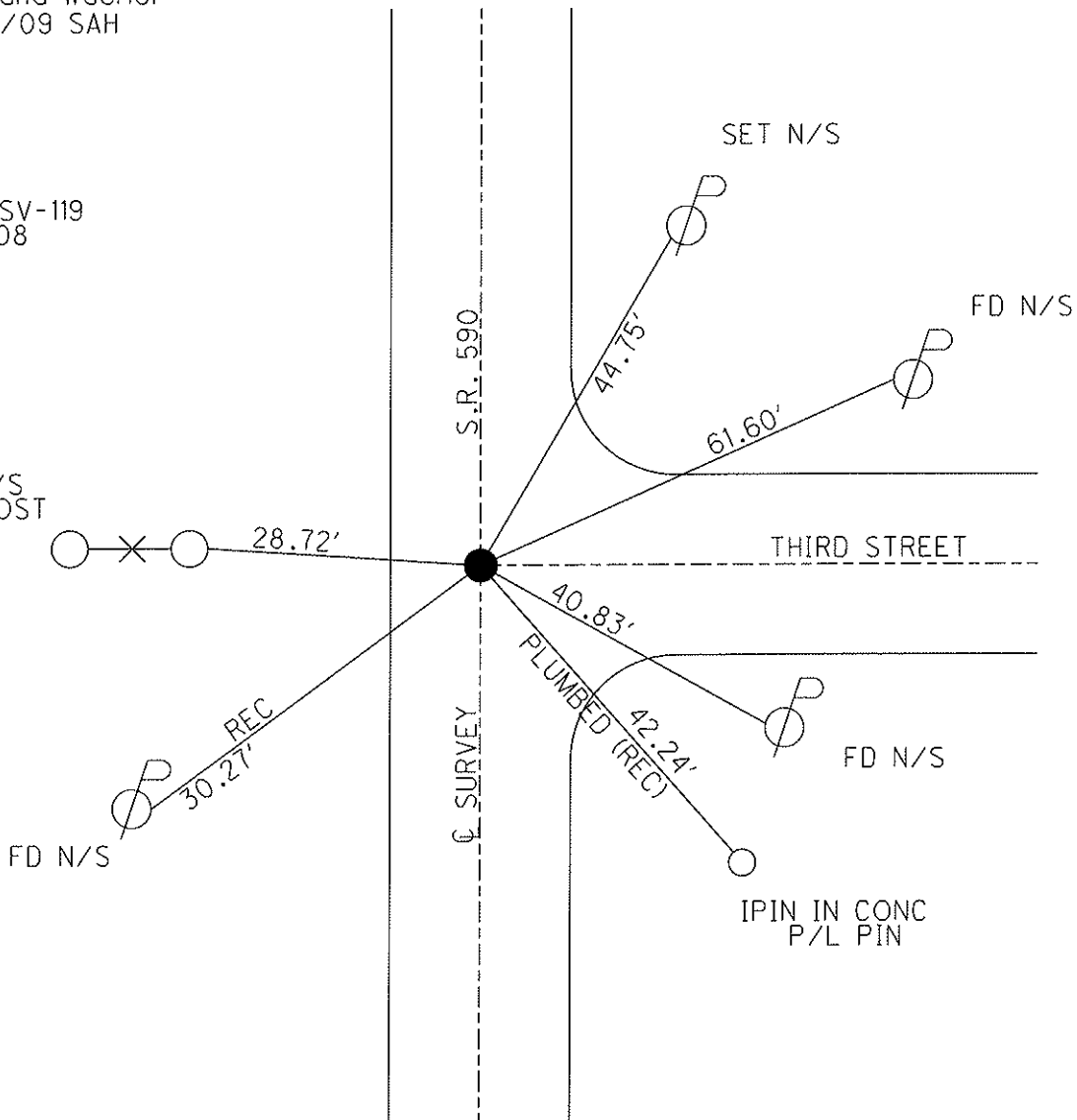


GRID: Northing: 680058.526 Easting: 1770734.593

Set Mag and Washer
06/09/09 SAH

SHOT GPS SV-119
08-13-08

SET N/S
FENCE POST



O.D.O.T. DISTRICT 2 SURVEY OFFICE

PERSONNEL _____

REFERENCE NO. 19

SHEET 2 OF 1

NOTES RIPPLE

H.C. BARBOUR

DATE 8/06/90 DRAWN 8/08/90

ROUTE SR# 590

R.C. Geyman

WEATHER Cloudy

COUNTY OTTAWA

TEMP. 62°

TOWNSHIP BENTON

SECTION 26, 27, 34 & 35

T 7 N R 14 E

TYPE MONUMENT Set P.K. & Washer

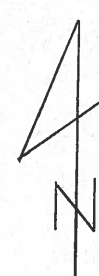
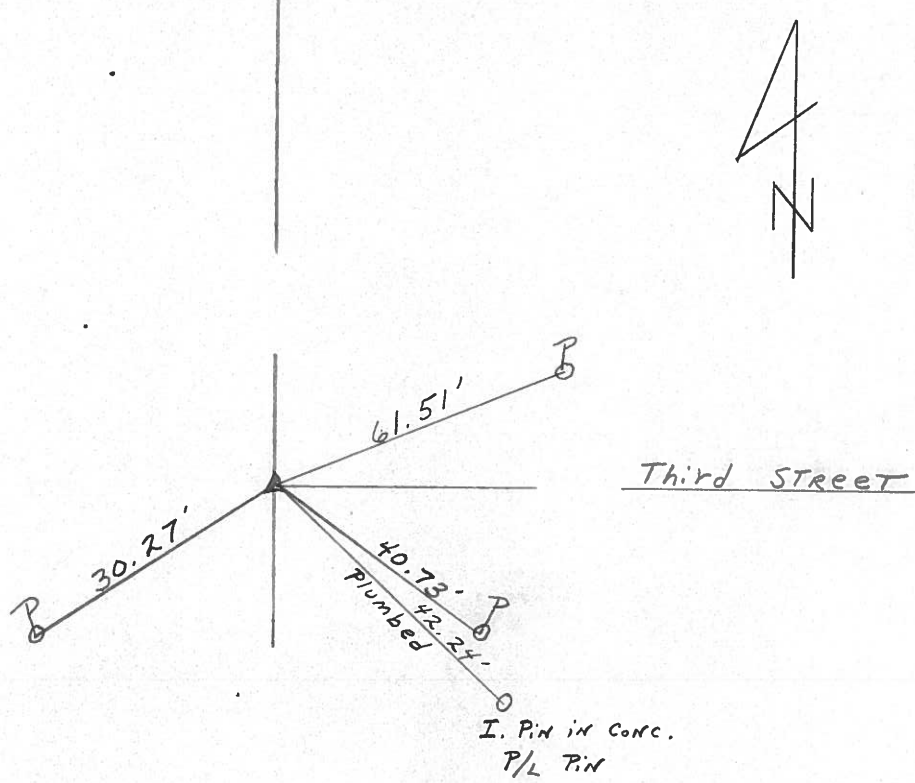
ON SURFACE - BELOW RR. Spike A Top iron pin 10" below surface

LEFT- & PAV'T. - RIGHT 6' LT. & PVT.

TO _____ EDGE PAVEMENT

S.L.M. _____

27	26
34	35



SR# 590

O.D.O.T. DISTRICT 2 SURVEY OFFICE

SHEET OF

County Ottawa S.R. #590

Township Benton

Section 26, 27, 34 & 35

T2N, R14E

Personnel Cronin - Draw

Ripple

Geyman

Masser

Barbour

#19

Date 7/19/82 Drawn 8/5/82

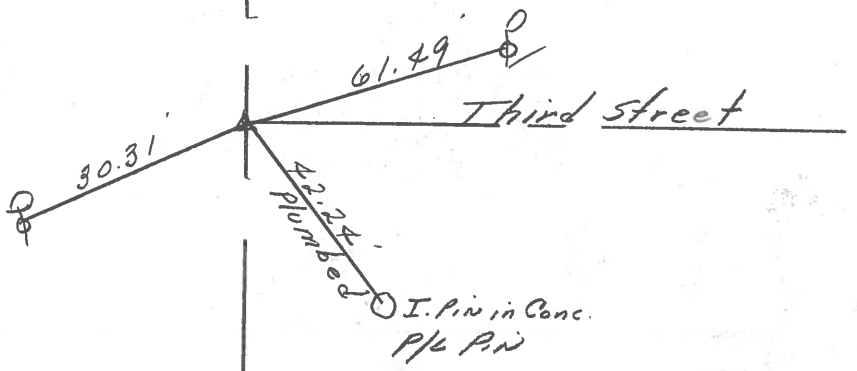
Weather sunny-humid

Temp. 85°

27	26
34	35



Set P.K. & washer atop
R.R. spike atop iron
pin 10" below surface
6' Lt. & Pavement



S.R. #590

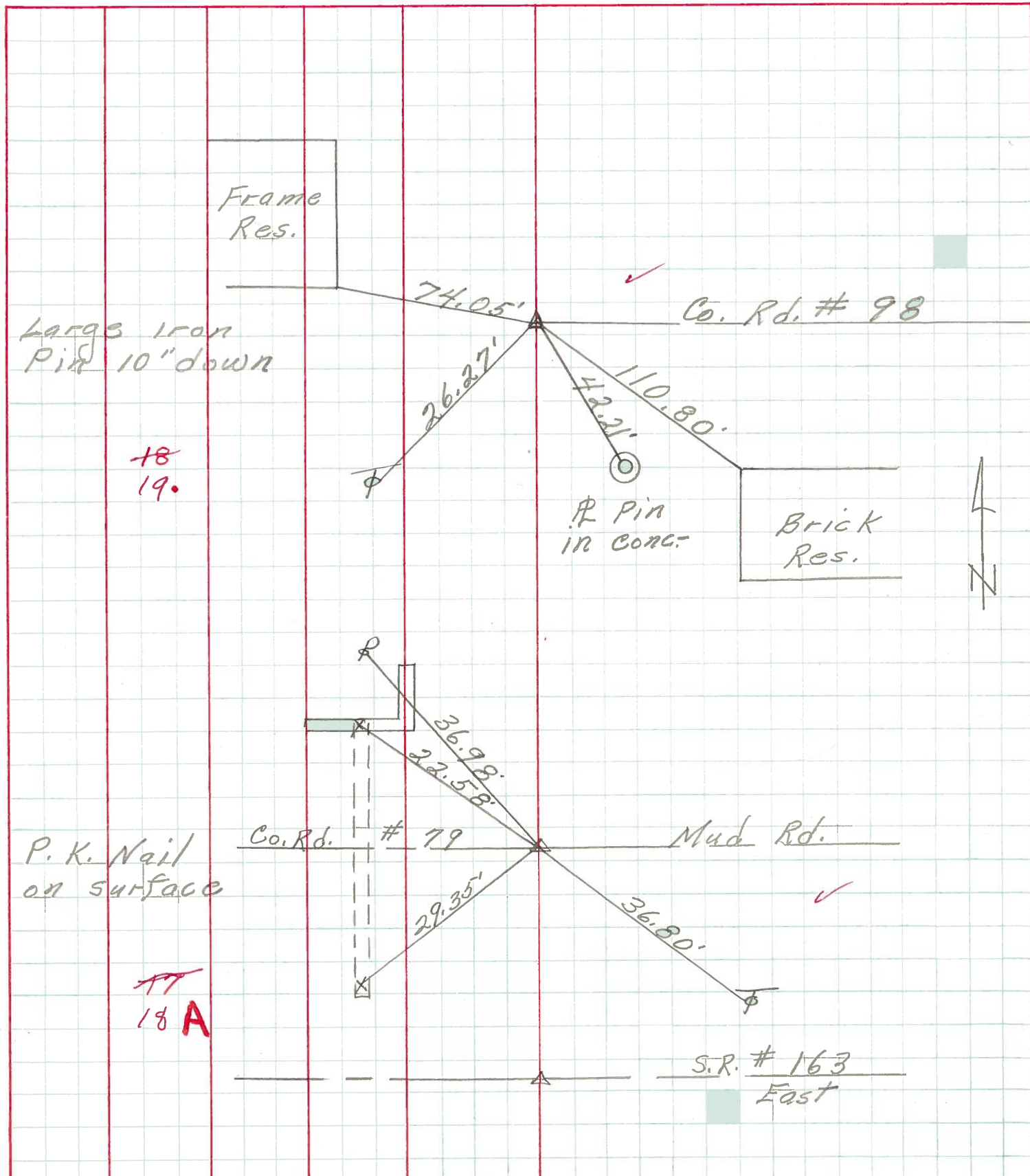
PERSONNEL TITLE PERSONNEL TITLE

COUNTY Ottawa DATE 7-26-71

S. R. 590 WEATHER Cloudy

SEC. 34 & 35 TEMP. 750

DESCRIPTION S.R. #163 to S.R. #2 Benton Twp. JOB NO.



PERSONNEL TITLE PERSONNEL TITLE

Schneider

Mosser

Barbour

COUNTY Ottawa

DATE 6-21-68

S. R. 590

WEATHER cloudy - windy

SEC. S.R.#163 to S.R.#2

TEMP. 60°

DESCRIPTION

Ties for Control Points

JOB NO.

LEFT

CENTER LINE

RIGHT

