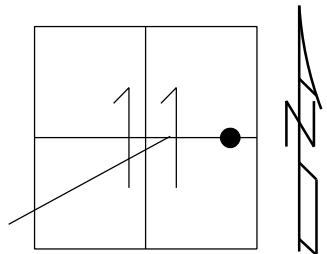


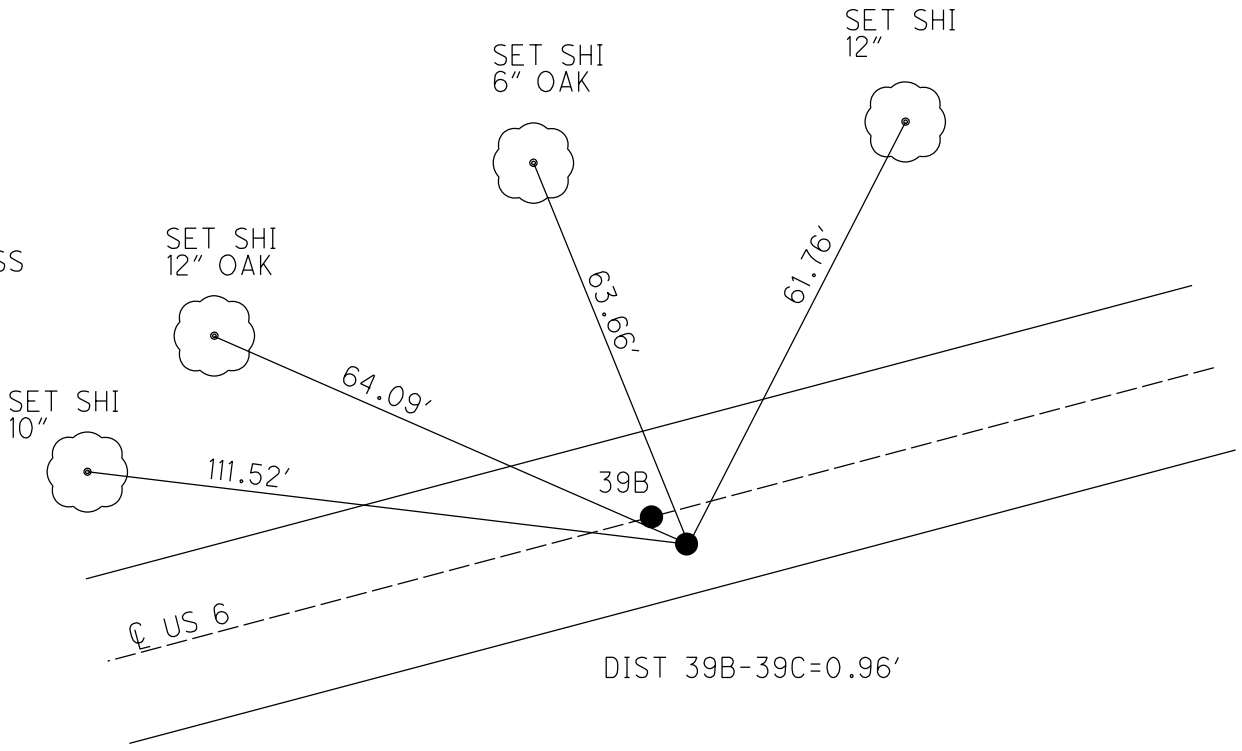
O.D.O.T. DISTRICT 2 SURVEY OFFICE (USE ONLY)

PERSONNEL _____ REFERENCE NO. 39 C SHEET 11 OF 34
 NOTES PRESTON-COLVIN DATE 9-4-24 ROUTE US 6
 H.C. NEISE WEATHER SUNNY COUNTY SANDUSKY
 R.C. BARRIERE TEMP. 70° TOWNSHIP RILEY
 SECTION 11
 DWG BY PRESTON-COLVIN PID PAVING TRAIN T 5 N R 16 E

TYPE MONUMENT P.K./WASHER
 ON SURFACE - BELOW ON
 OFFSET \bar{C} PAVEMENT 1.0' \bar{E} : RT
11' TO RT EDGE PAVEMENT
 STATION: 1341+85
 HORZ.DATUM: NAD83 (2011) GEOID: NAVD88 2018
 GRID: NORTHING: 634944.170 EASTING: 1837266.138
 LDP: NORTHING: _____ EASTING: _____



RECORD: P.T.
 STA.1343+40.32
 PREVIOUS MONUMENTS:
 P.K./WASHER
 SM.SPIKE/WASHER
 FD P.K./WASHER
 3/16/02, DCH
 SET P.K./WASHER
 6/10/02, DCH
 FD P.K./WASHER
 REFD39
 11/22/17, DCH
 SET MAG/WASHER
 8-2-19, JLL
 FD MAG/WASHER
 2/10/22, JFO
 1/20/23, JMR
 DID NOT FIND
 TIES DO NOT CROSS
 DIG WHEN NEEDED
 9-4-24, TDN

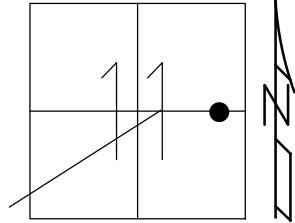


O.D.O.T. DISTRICT 2 SURVEY OFFICE (USE ONLY)

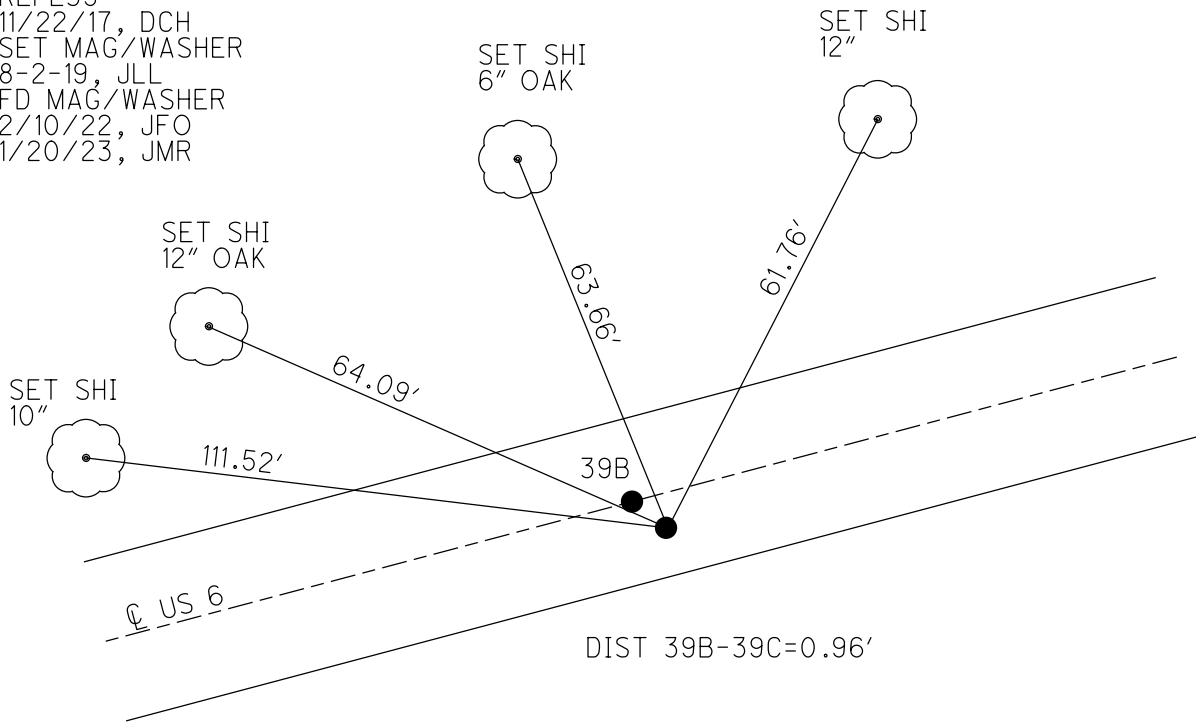
PERSONNEL _____ REFERENCE NO. 39 C SHEET 11 OF 34
 NOTES LEU DATE 8/1/18 ROUTE US 6
 H.C. LEU WEATHER CLOUDY COUNTY SANDUSKY
 R.C. TRENKA TEMP. 75° TOWNSHIP RILEY
 DWG BY AUBLE PID PAVETRAIN SECTION 11
 T 5 N R 16 E

TYPE MONUMENT P.K./WASHER
 ON SURFACE - ~~BELOW~~ ON
 OFFSET 1.0' LT : RT
11' TO RT EDGE PAVEMENT
 STATION: 1341+85

HORIZ.DATUM: NAD83 (2011) GEOID: 2012A
 GRID: NORTHING: 634944.170 EASTING: 1837266.138



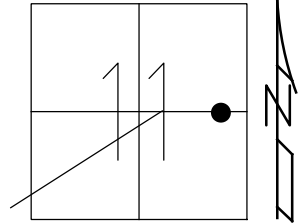
RECORD:
 FD P.K./WASHER
 3/16/02, DCH
 SET P.K./WASHER
 6/10/02, DCH
 FD P.K./WASHER
 REFE39
 11/22/17, DCH
 SET MAG/WASHER
 8-2-19, JLL
 FD MAG/WASHER
 2/10/22, JFO
 1/20/23, JMR



O.D.O.T. DISTRICT 2 SURVEY OFFICE (USE ONLY)

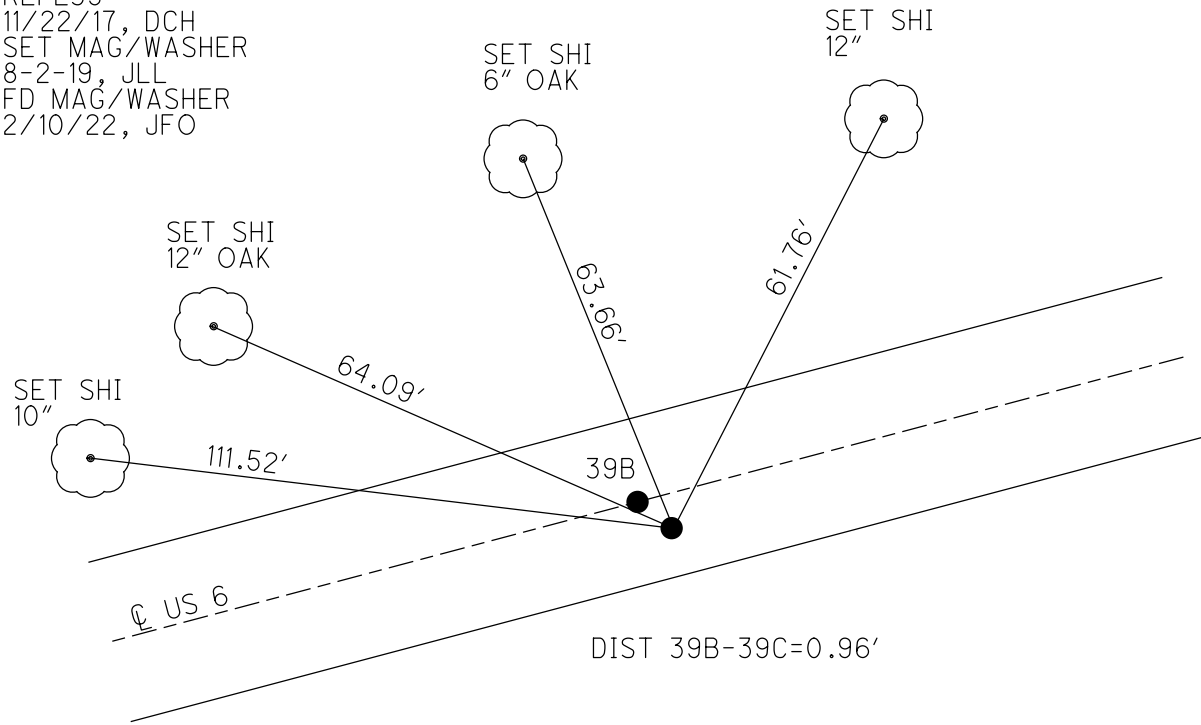
PERSONNEL _____ REFERENCE NO. 39 C SHEET 11 OF 34
 NOTES LEU DATE 8/1/18 ROUTE US 6
 H.C. LEU WEATHER CLOUDY COUNTY SANDUSKY
 R.C. TRENKA TEMP. 75° TOWNSHIP RILEY
 DWG BY AUBLE PID 95769 SECTION 11
 T 5 N R 16 E

TYPE MONUMENT P.K./WASHER
 ON SURFACE - ~~BELOW~~ ON
 OFFSET Q PAVEMENT 1.0' ~~LT~~ : RT
11' TO RT EDGE PAVEMENT
 STATION: 1341+85



HORZ.DATUM: NAD83 (2011) GEOID: 2012A
 GRID: NORTHING: 634944.170 EASTING: 1837266.138

RECORD:
 FD P.K./WASHER
 3/16/02, DCH
 SET P.K./WASHER
 6/10/02, DCH
 FD P.K./WASHER
 REFE39
 11/22/17, DCH
 SET MAG/WASHER
 8-2-19, JLL
 FD MAG/WASHER
 2/10/22, JFO



O.D.O.T. DISTRICT 2 SURVEY OFFICE (USE ONLY)

PERSONNEL

REFERENCE NO. 39 C

SHEET 11 OF 34

NOTES LEU

DATE 8/1/18

ROUTE US 6

H.C. LEU

WEATHER CLOUDY

COUNTY SANDUSKY

R.C. TRENKA

TEMP. 75°

TOWNSHIP RILEY

SECTION 11

DWG BY AUBLE

PID 95769

T 5 N R 16 E

TYPE MONUMENT P.K./WASHER

ON SURFACE - BELOW ON

OFFSET \odot PAVEMENT 1.0' \perp : RT

11' TO RT EDGE PAVEMENT

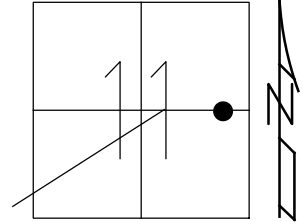
STATION: 1341+85

HORZ.DATUM: NAD83 (2011)

GEOID: 2012A

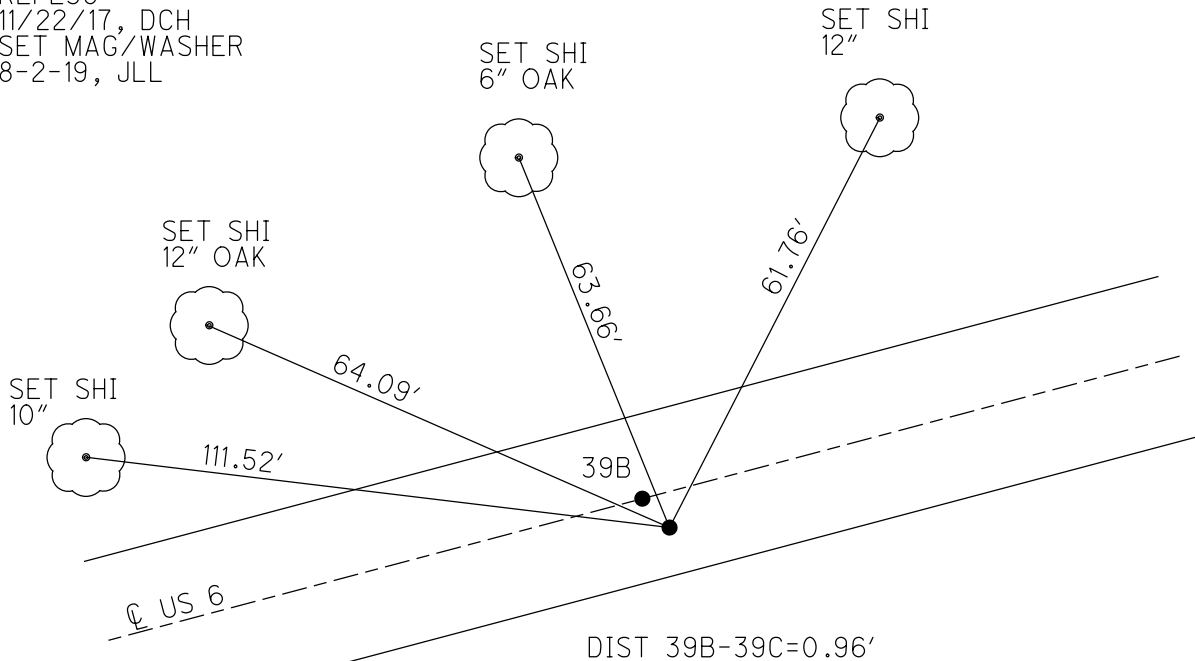
GRID: NORTHING: 634944.170

EASTING: 1837266.138



RECORD:

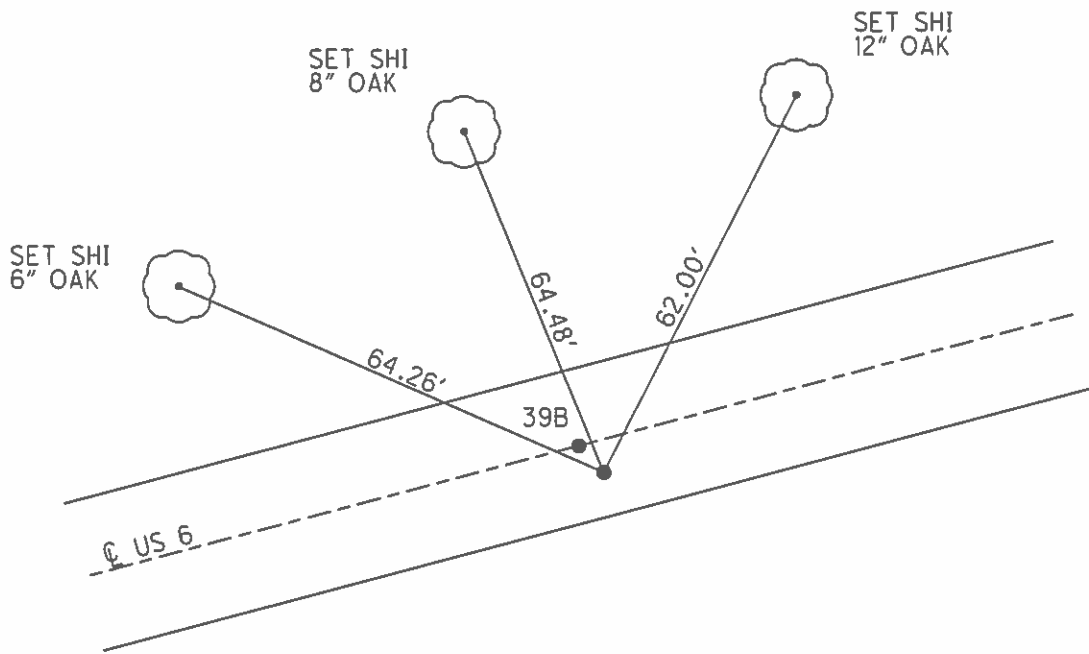
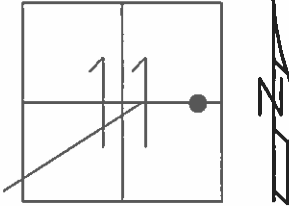
FD P.K./WASHER
 3/16/02, DCH
 SET P.K./WASHER
 6/10/02, DCH
 FD P.K./WASHER
 REFE39
 11/22/17, DCH
 SET MAG/WASHER
 8-2-19, JLL



O.D.O.T. DISTRICT 2 SURVEY OFFICE (USE ONLY)

PERSONNEL _____ REFERENCE NO. 39 B SHEET 10 OF 31
 NOTES ROUSOS DATE 03/16/02 ROUTE US 6
 H.C. VAN DUSEN WEATHER WINDY COUNTY SANDUSKY
 R.C. MOSSER TEMP. 28° TOWNSHIP RILEY
 _____ HUMAN _____ SECTION 11
 _____ T 5 N R 16 E

TYPE MONUMENT _____ PK/WASHER _____
 ON SURFACE - ~~BELOW~~ _____ ON _____
~~LEFT~~ - C PAV'T - RIGHT _____ 1.0'
11.0' TO RT EDGE PAVEMENT
 S.L.M. _____ 1341+85
 GRID: NORTHING: _____ EASTING: _____



RECORD:
 PT C SURVEY & R/W 1343+40.12
 SAN 6 (22.64)(25.02)
 OLD STA 101+22.47
 PREVIOUS MONUMENTS
 PK/WASHER
 SM SPK/WASHER
 SET PK/WASHER
 06/10/02 DCH
 DIST 39B-39C=0.95'

O.D.O.T. DISTRICT 2 SURVEY OFFICE

PERSONNEL

REFERENCE NO. 39-B

SHEET 8 OF 27

NOTES ROUSOS

DATE 3/16/02

ROUTE US 6

H.C. VAN DUSEN

WEATHER WINDY

COUNTY SANDUSKY

R.C. MOSSER

TEMP. 28°

TOWNSHIP RILEY

HOMAN

SECTION 11

T5 N R16 E

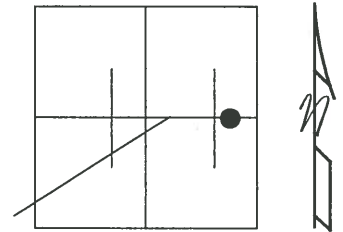
TYPE MONUMENT PK'S & WASHERS

ON SURFACE - BELOW ON _____

~~LEFT - Q~~ PAV'T - ~~RIGHT~~ "A" ON "B" 1.0' RT

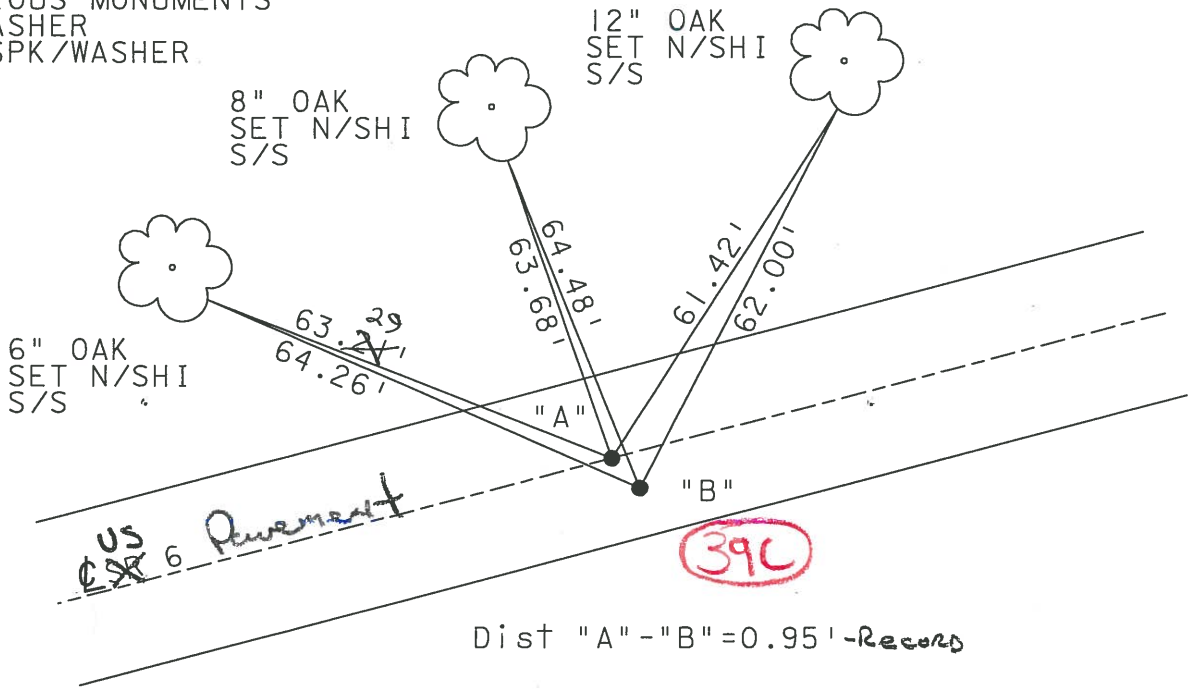
TO _____ EDGE PAVEMENT "A" 12' TO RT EDGE
"B" 11' TO RT EDGE

S.L.M. _____ 1341+85



"A"
P.T. CONST 1343+40.32
SAN 6 (22.64)(25.02)
PREVIOUS MONUMENTS
PK/WASHER
SM. SPK/WASHER.

SET PK'S & WASHER'S
6-10-02
DCH



"B"
P.T. SURVEY & R/W 1343+40.12
SAN 6 (22.64)(25.02)
OLD STA 101+22.47
PREVIOUS MONUMENTS
PK/WASHER
SM. SPK/WASHER

O.D.O.T. DISTRICT 2 SURVEY OFFICE

PERSONNEL _____

REFERENCE NO. _____

SHEET 20 OF 39

NOTES CHEHEY

H.C. EPPLER

R.C. BARBOUR

DATE 3-16-1991

WEATHER SUNNY

TEMP. 85°

ROUTE 6

COUNTY SANDUSKY

TOWNSHIP RILEY

SECTION 11

T 5 N R 16 E

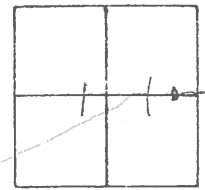
TYPE MONUMENT PKs/WASHERS

ON SURFACE - ~~BELOW~~ _____

LEFT - ☉ PAV'T. - RIGHT _____

TO _____ EDGE PAVEMENT

S.L.M. 1341+85



"A"

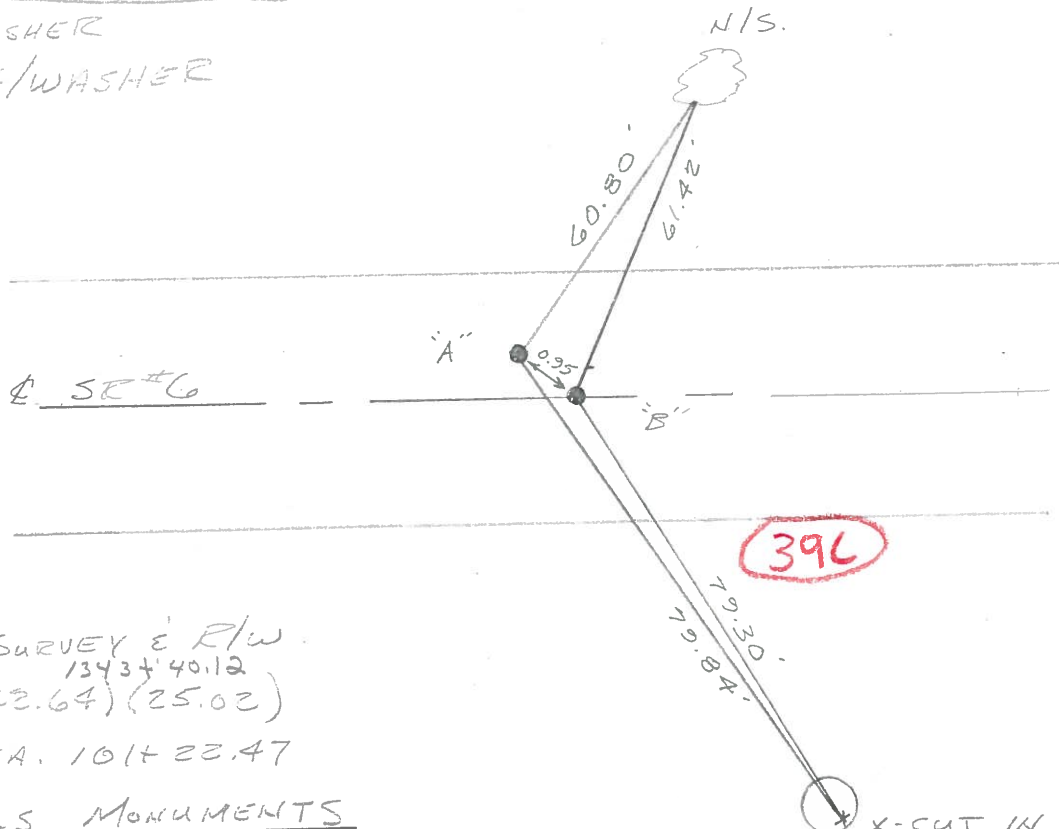
P.T. CONST. 1343+40.32

SAN 6 (22.64) (25.02)

PREVIOUS MONUMENTS

PK/WASHER

SM. SPK/WASHER



"B"

P.T. ☉ SURVEY E R/W

1343+40.12

SAN 6 (22.64) (25.02)

OLD STA. 101+22.47

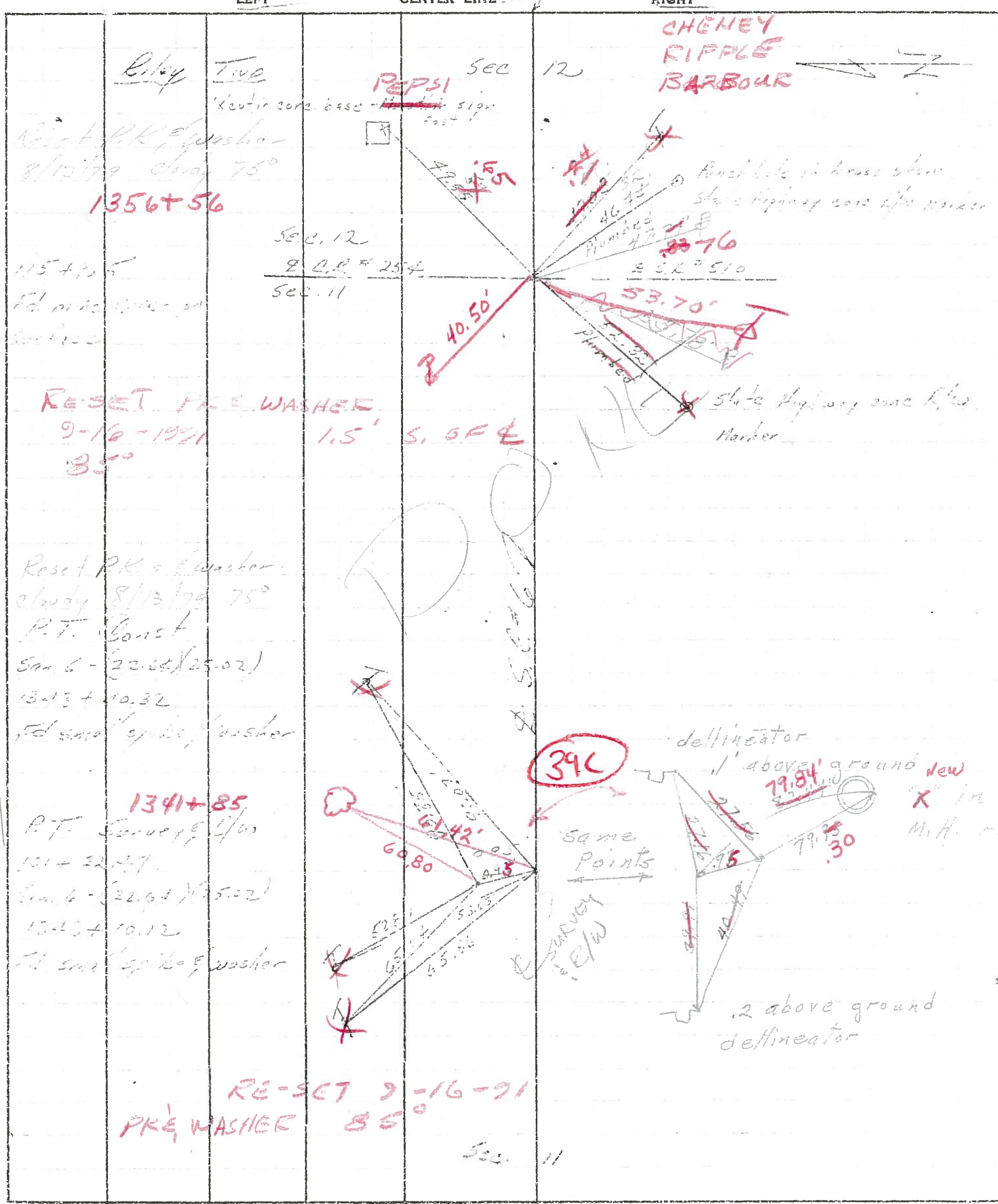
PREVIOUS MONUMENTS

PK/WASHER

SM. SPK/WASHER

PERSONNEL	TITLE	PERSONNEL	TITLE	COUNTY	DATE
Cronin		Schneider		Sandusky	7/29/75
Feb		Masse		S. R. 56	WEATHER Sunny
Combs		Barbour		SEC. I - Fremont - East	TEMP. 84°

DESCRIPTION Ties for Control Points JOB NO. _____



PERSONNEL	TITLE	PERSONNEL	TITLE
Cronin		Schneider	
Ash		Mosser	
Geyman		Barbour	

COUNTY Sandusky DATE 7/29/75
 S. R. # 6 WEATHER sunny
 SEC. "I" - Fremont - East TEMP. 84°

DESCRIPTION Ties for Control Points JOB NO. _____

