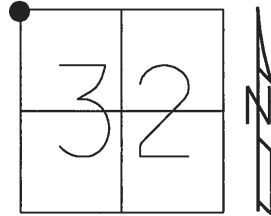


O.D.O.T. DISTRICT 2 SURVEY OFFICE (USE ONLY)

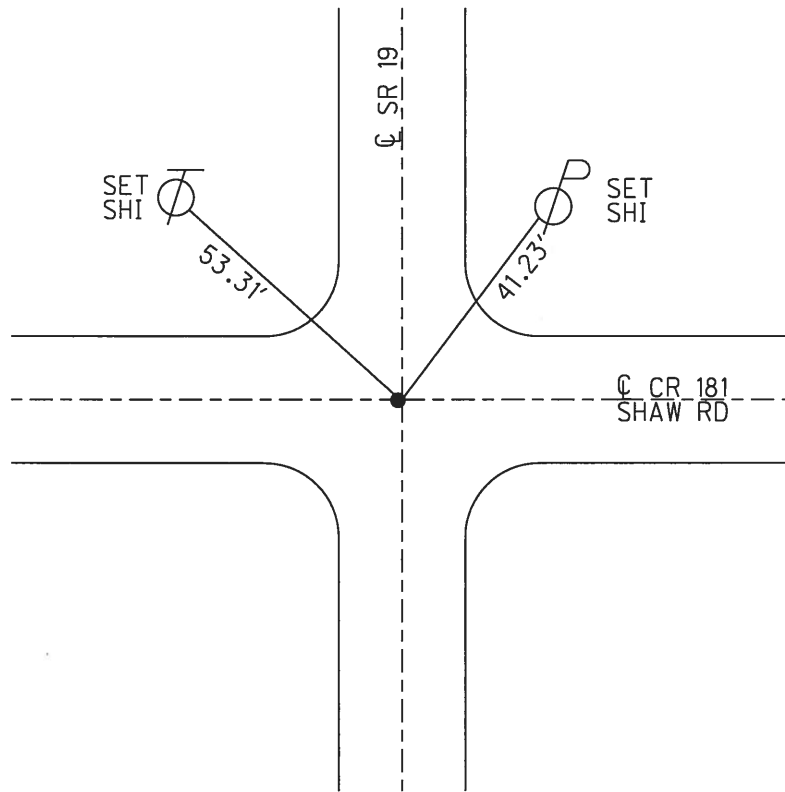
PERSONNEL _____ REFERENCE NO. 3 SHEET 7 OF 33
 NOTES RHOADES DATE 4-14-16 ROUTE SR 19
 H.C. O'DONNELL WEATHER CLOUDY COUNTY SANDUSKY
 R.C. RHOADES TEMP. 40°F TOWNSHIP GREEN CREEK
 SECTION 32
 T 4 N R 16 E

TYPE MONUMENT MAG/WASHER
 ON SURFACE - ~~BELOW~~ ON _____
 LEFT - ☉ PAV'T - ~~RIGHT~~ 1'
 _____ TO _____ EDGE PAVEMENT
 S.L.M. 53+26



Grid: Northing: 585089.5076 Easting: 1816633.9580

RECORD: P.I.
 $\Delta=01^{\circ}18'00''$
 27+41.35
 FD P.K./WASHER
 ATOP P.K./WASHER
 ATOP IPIN
 ATOP STONE WITH "+"
 CUT & PUNCH HOLE
 16" BELOW
 REF FIELD BOOK #56
 1985
 SET MAG NAIL
 8-30-02, DCH
 FD MAG/WASHER
 REF3
 4-14-16, JFO
 9-2-16

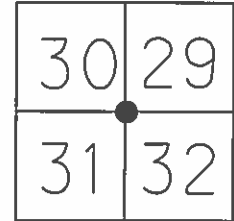


O.D.O.T. DISTRICT 2 SURVEY OFFICE (USE ONLY)

PERSONNEL _____ REFERENCE NO. 3 SHEET 7 OF 33

NOTES RHOADES DATE 4-14-16 ROUTE SR 19
 H.C. O'DONNELL WEATHER CLOUDY COUNTY SANDUSKY
 R.C. RHOADES TEMP. 40°F TOWNSHIP GREEN CREEK
 SECTION 29 30 31 32
 T 4 N R 16 E

TYPE MONUMENT MAG/WASHER
 ON SURFACE - ~~BELOW~~ ON
 LEFT - ☉ PAV'T - ~~RIGHT~~ 1'
 - TO - EDGE PAVEMENT
 S.L.M. 53+26



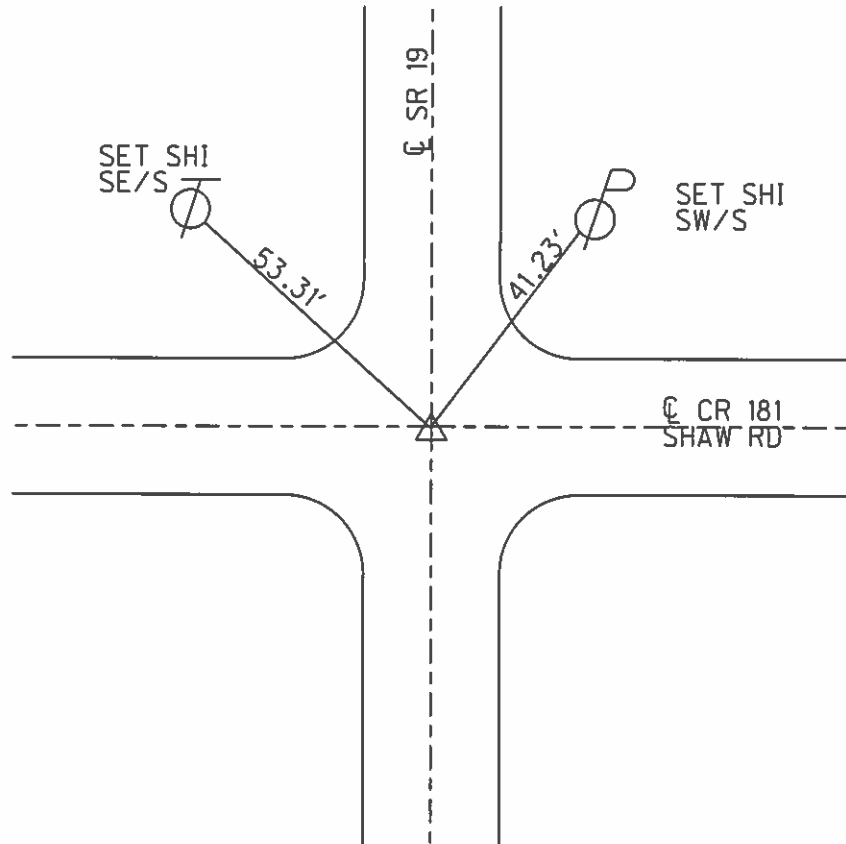
Grid: Northing: 585089.5076 Easting: 1816633.9580

RECORD:
 $\Delta=01^{\circ}18'00''$
 P.I.
 27+41.35
 PK/WASHER
 ATOP PK/WASHER
 ATOP IRON ROD
 ATOP STONE WITH "+"
 CUT & PUNCH HOLE
 16" BELOW SURFACE
 REF FIELD BOOK #56
 1985

SET MAG NAIL
 08-30-02, DCH

FD MAG/WASHER
 GPS, REF3
 4-14-16, JFO

UNCOVERED
 9-2-16



O.D.O.T. DISTRICT 2 SURVEY OFFICE

PERSONNEL

REFERENCE NO. 3

SHEET 6 OF 31

NOTES Rousos

DATE 04-10-02

ROUTE SR 19

H.C. Homan

WEATHER Sunny

COUNTY Sandusky

R.C. Rousos

TEMP. 50°

TOWNSHIP Green Crk

SECTION 32

T4 N R16 E

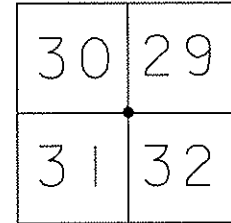
TYPE MONUMENT PK/Washer

ON SURFACE - ~~BELOW~~ On Surface

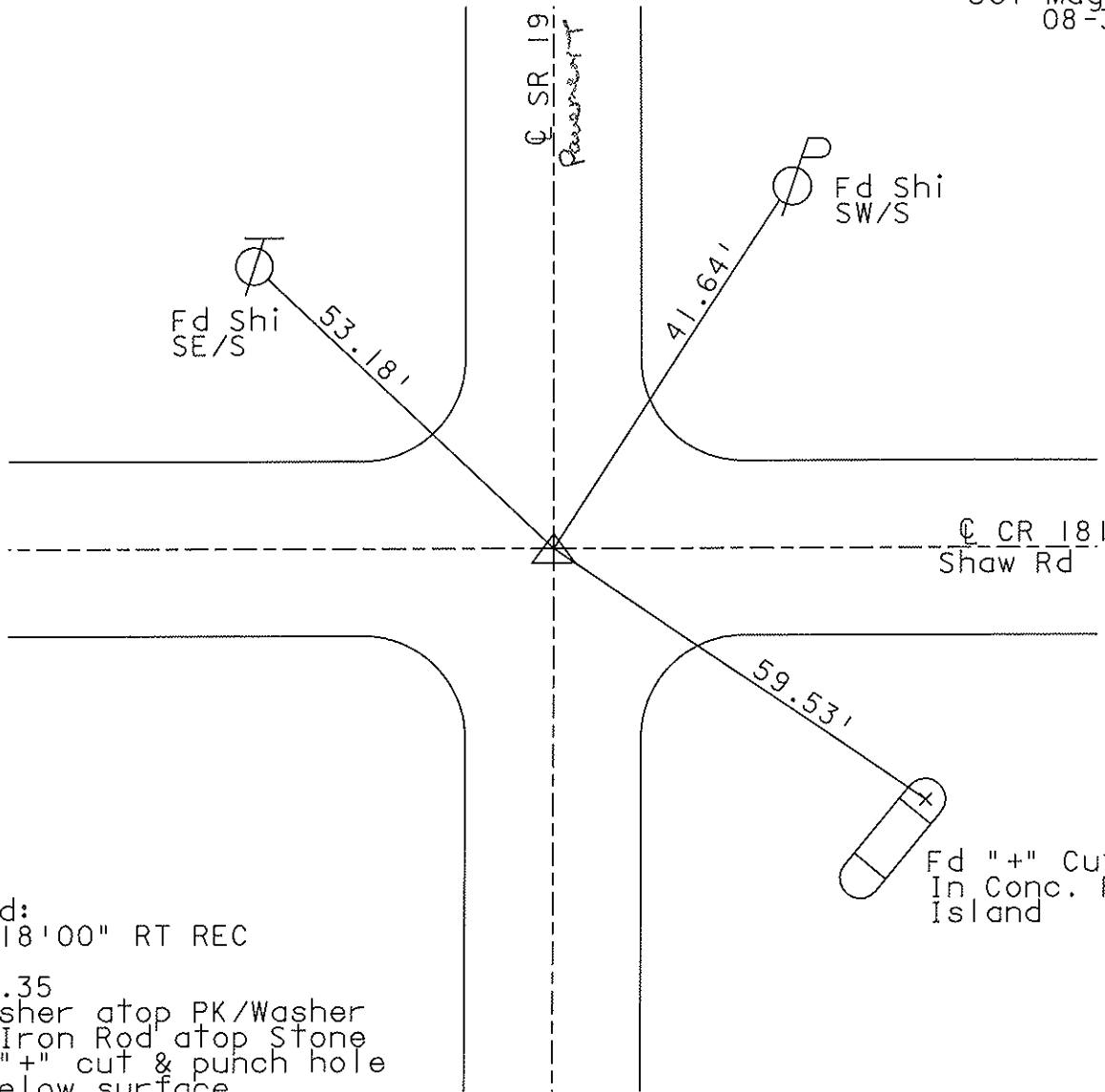
LEFT - ~~C PART~~ - ~~RIGHT~~ 1' LT

TO EDGE PAVEMENT

S.L.M. 53+26



Set Mag Nail
08-30-02
DCH



(1985)
Record:
 $\Delta = 01^{\circ}18'00''$ RT REC
P. I.
27+41.35
PK/Washer atop PK/Washer
atop Iron Rod atop Stone
with "+" cut & punch hole
16" below surface
Ref Field Book #56

O.D.O.T. DISTRICT 2 SURVEY OFFICE

PERSONNEL

NOTES Cronin
 H.C. Ripple
 R.C. Geyman
Barbour

REFERENCE NO. 3
 DRAWN 9/29/86
 DATE 9/25/86
 WEATHER overcast
 TEMP. 77°

SHEET 6 OF 31

ROUTE #19
 COUNTY Sandusky
 TOWNSHIP GREEN CREEK
 SECTION 29, 30, 31 & 32
 T 4 N R 16 E

TYPE MONUMENT P.K. & washer
 ON SURFACE - BELOW on surface
 LEFT- & PAV'T. - RIGHT 1' ± Lt. & Pav't
 TO EDGE PAVEMENT
 S.L.M. _____

30	29
31	32



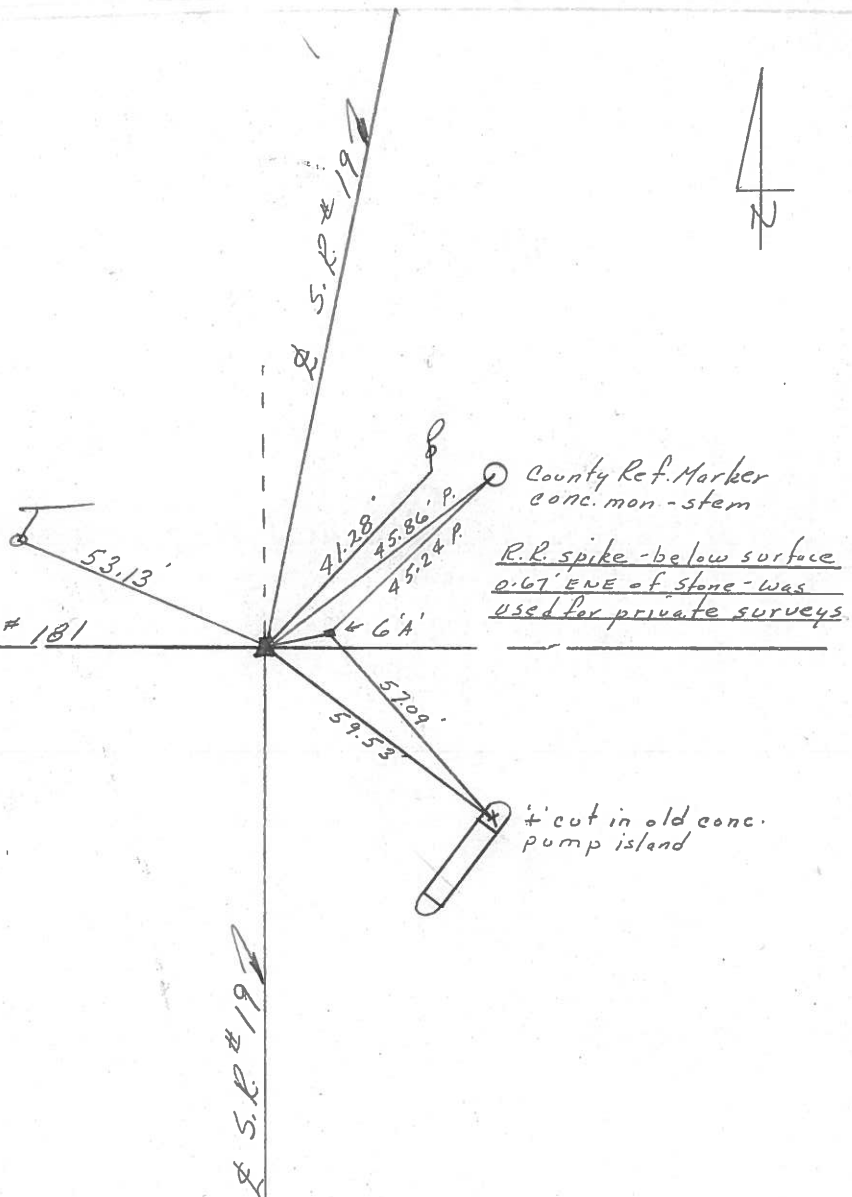
$\Delta = 01^{\circ}18'00''$ Rt. Rec.

P.I.

2.7 + 41.35

C.P. # 181

P.K. & washer at top P.K. & washer at top iron rod at top stone with 1/2" cut & punch hole 16" ± below surface - Ref. Field Bk. # 56



PERSONNEL TITLE PERSONNEL TITLE

Cronin Schneider
 Ripple Mosser
 Geyman Barbour

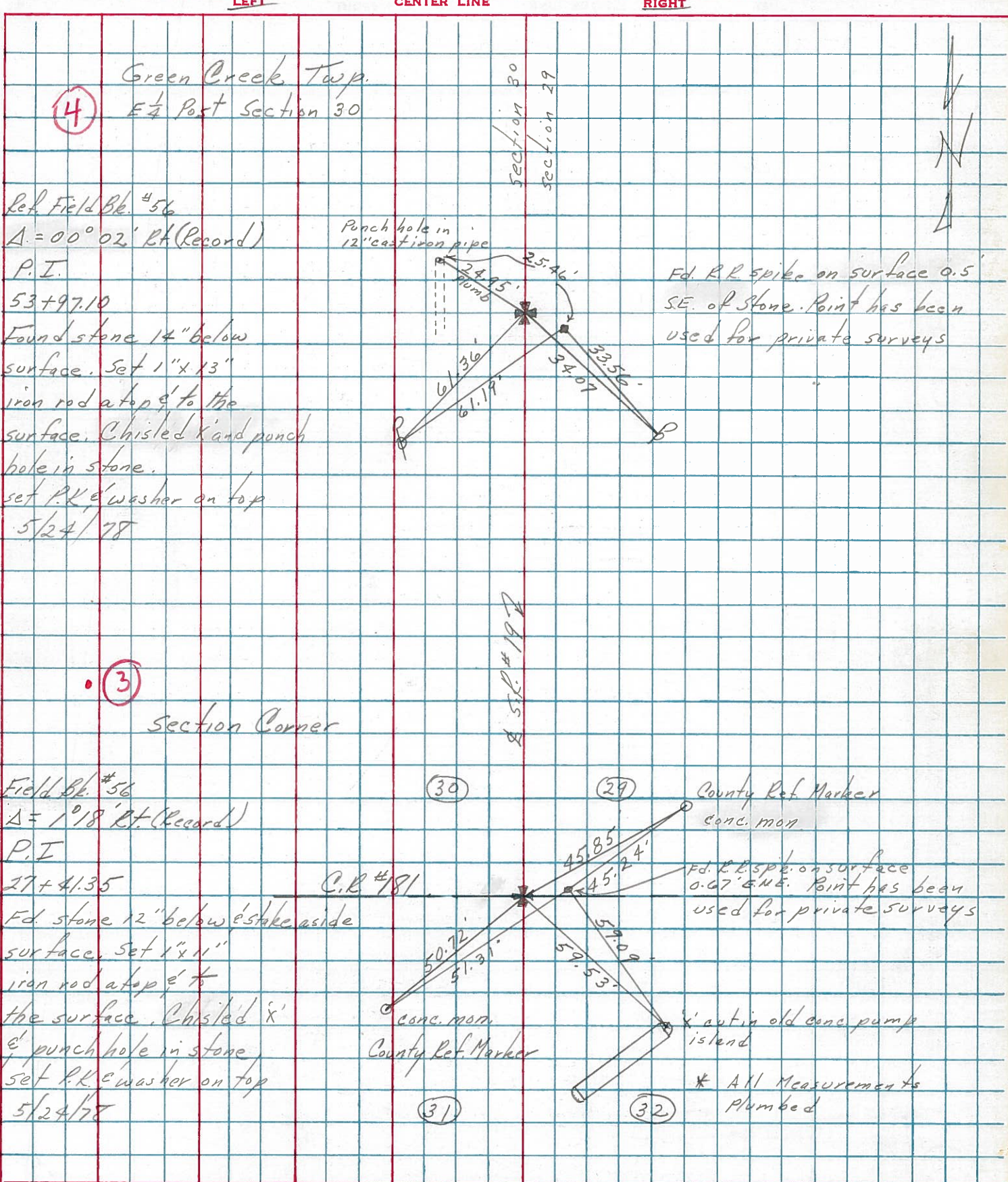
COUNTY Sandusky DATE 4/20/77

S. R. #19 (I.C.H. 515) WEATHER sunny

SEC. 'B' TEMP. 72°

DESCRIPTION Ties for Control Points

JOB NO.



PERSONNEL TITLE PERSONNEL TITLE
 Schneider _____
 Mosser _____
 Barbour _____

COUNTY Sandusky DATE Jan, 1968
 S. R. # 19 WEATHER _____
 SEC. Seneca Co. Line North TEMP. _____

DESCRIPTION Ties for Control Points JOB NO. _____

