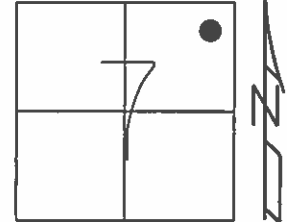


O.D.O.T. DISTRICT 2 SURVEY OFFICE (USE ONLY)

PERSONNEL _____ REFERENCE NO. 11 E SHEET 32 OF 33

NOTES RHOADES DATE 4-26-16 ROUTE SR 19
 H.C. O'DONNELL WEATHER CLOUDY COUNTY SANDUSKY
 R.C. RHOADES TEMP. 62°F TOWNSHIP GREEN CREEK
 SECTION 7
 T 4 N R 16 E

TYPE MONUMENT PK/WASHER
 ON SURFACE - ~~BELOW~~ ON _____
 LEFT - ☉ PAV'T - ~~RIGHT~~ 3.5'
 - TO - EDGE PAVEMENT
 S.L.M. 261+30



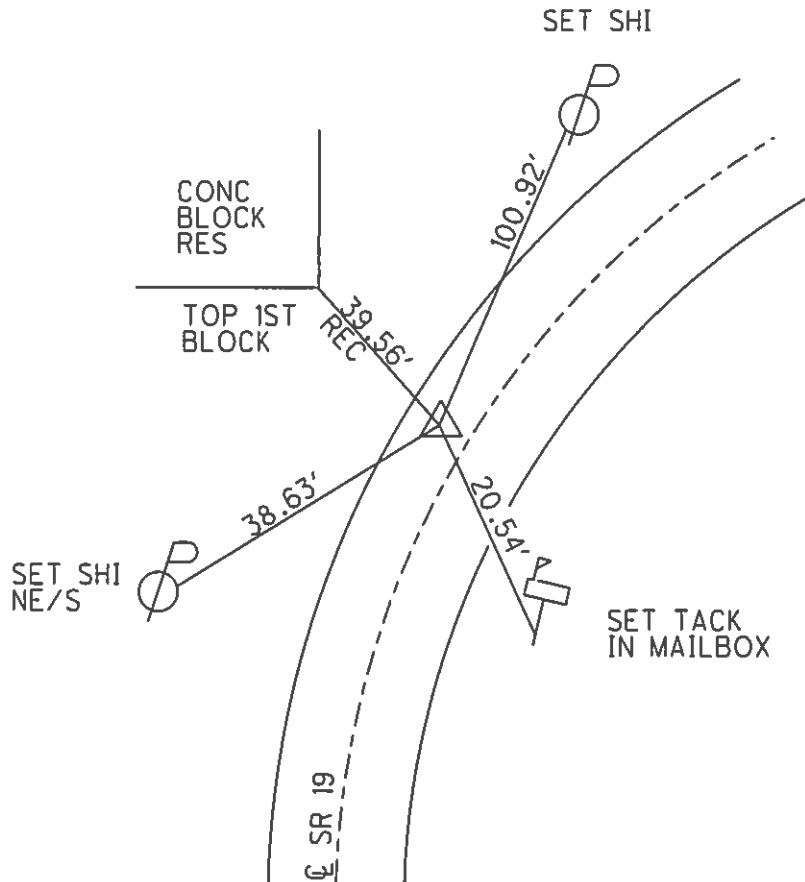
Grid: Northing: 605047.3464 Easting: 1816551.2406

RECORD:
 $\Delta=19^{\circ}40'00''$
 145+00
 1/2" X 15" IRON PIN
 ATOP 3/4" IRON PIN
 23" BELOW
 REF FIELD BOOK #55

SET MAG/WASHER
 9-18-02, DCH

FD PK NAIL
 GPD, REF E11
 4-26-16

UNCOVERED
 9-2-16



O.D.O.T. DISTRICT 2 SURVEY OFFICE

PERSONNEL

REFERENCE NO. 11-E

SHEET 29 OF 31

NOTES ROUSOS

DATE 4-10-02

ROUTE SR 19

H.C. HOMAN

WEATHER SUNNY

COUNTY SANDUSKY

R.C. ROUSOS

TEMP. 50°

TOWNSHIP GREEN CRK

SECTION 7

T 4 N R 16 E

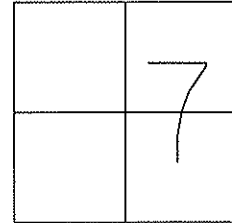
TYPE MONUMENT PK & WASHER

~~ON SURFACE - BELOW~~ ON SURFACE

~~LEFT - C PAV'T - RIGHT~~ 3.5'

TO EDGE PAVEMENT

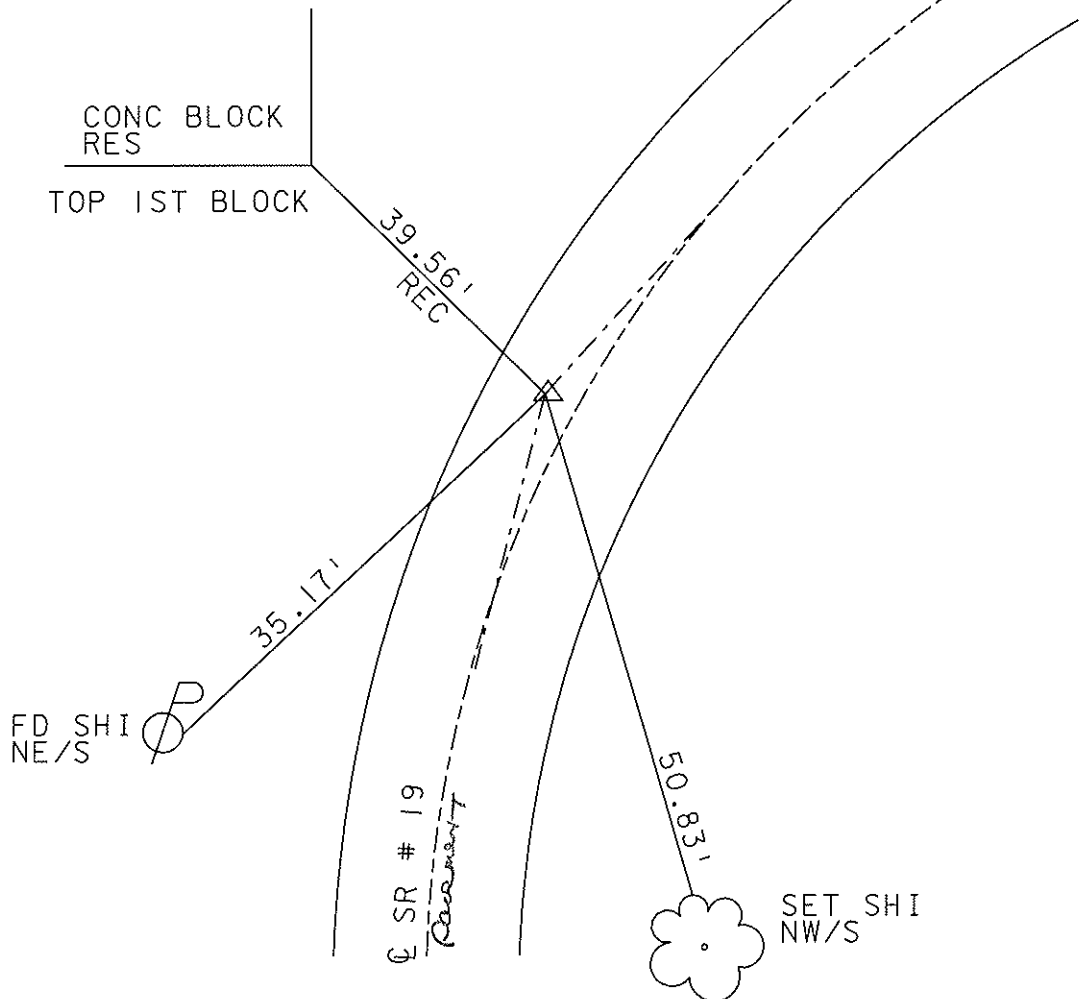
S.L.M. 261+30



1986 RECORDS:

△ = 19°40'00" RT REC
 145+00
 1/2" X 15" IRON PIN OVER
 3/4" IRON PIN 23" BELOW SURFACE
 REF FIELD BOOK #55

SET MAG NAIL
 & WASHER
 9-18-02
 DCH



O.D.O.T. DISTRICT 2 SURVEY OFFICE

PERSONNEL

NOTES Cronin

H.C. Ripple

R.G. Geyman

Barbour

REFERENCE NO. 11E

DRAWN 11/21/86

DATE 9/26/86

WEATHER cloudy

TEMP. 78°

SHEET 29 OF 31

ROUTE #19

COUNTY Sandusky

TOWNSHIP Green Creek

SECTION 7

T 4 N R 17 E

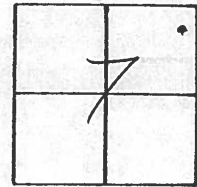
TYPE MONUMENT P.K. & Washer

ON SURFACE - BELOW on surface

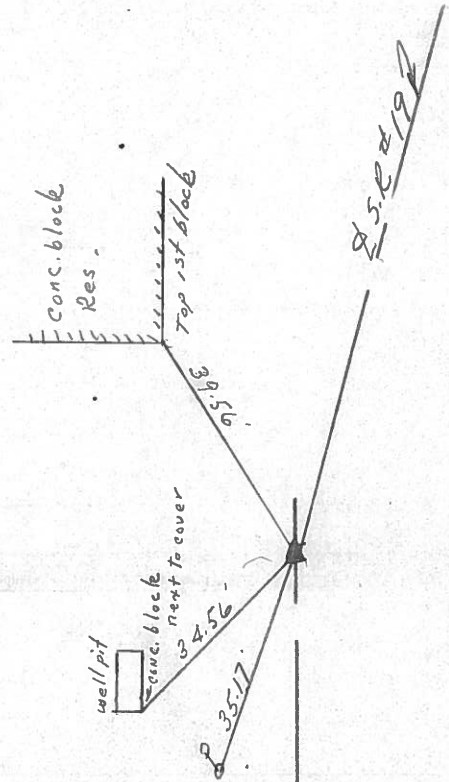
LEFT - ☉ PAV'T. - RIGHT 35' ± R.L. & Pavt.

TO EDGE PAVEMENT

S.L.M. _____



P.I. Δ = 09°40'00" R. Rec.
145+00
1/2" x 15" iron rod atop 3/4" Re-
rod 23" below surface
Ref: Field Book #55



S 50219
882.86 Rec. 881.43 Meas.



State Route #19

County Sandusky

Township Green Creek

Section 7

T4N, R16E

Personnel Cronin Schneider

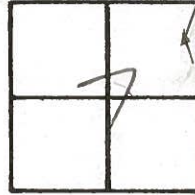
Ripple Barbour

Geyman

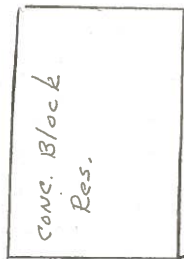
Date 9/11/78

Weather Hazy

Temp. 80°



11-E (circled in red)



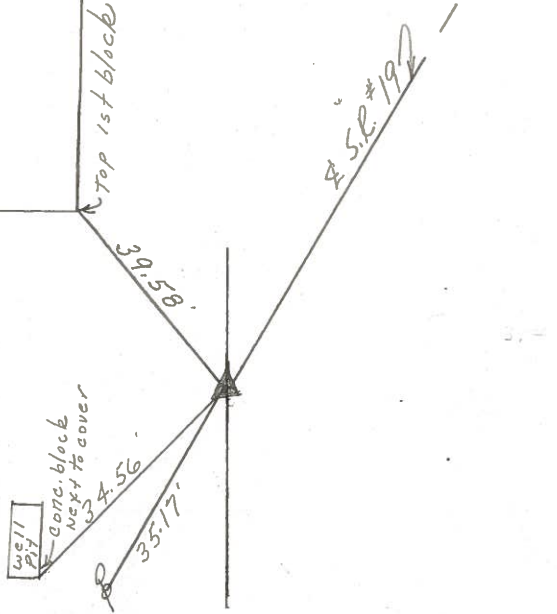
$\Delta = 4^{\circ}40'00''$ Rt. Rec.

P.I. Field Bk. #55

145+00

Ed. 3/4" Re-Rod 19" below surface.

Set 1/2" x 18" iron rod at top of
to the surface. 3.4' Rt. of P. Limit



S.P. #192
882.86 Rec
881.43 Mens.