

O.D.O.T. DISTRICT 2 SURVEY OFFICE (USE ONLY)

PERSONNEL _____ REFERENCE NO. 25 SHEET 15 OF 16
 NOTES LEU DATE 8/7/14 ROUTE SR 19
 H.C. WESTFALL WEATHER SUNNY COUNTY SANDUSKY
 R.C. ALLEN TEMP. 72° TOWNSHIP RICE
 RHOADES SECTION 29
 DWG BY AUBLE PID 107060 T 6 N R 15 E

TYPE MONUMENT MONBOX W/1" IPIN

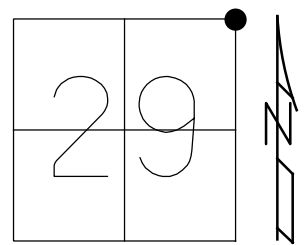
~~ON SURFACE~~ - BELOW ON

OFFSET \odot PAVEMENT 6' LT : ~~RT~~
 - TO - EDGE PAVEMENT 10.1' S. OF \odot LT

STATION: 922+94.4

HORZ. DATUM: NAD83 (2011) GEOID: 2012A

GRID: NORTHING: 653186.782 EASTING: 1791743.928



RECORD:
 STONE FD IN 1873,
 E. FRANCK
 SEC.20 S.E.COR.
 SEC.21 S.W.COR.

NOTE: OTT 19 REF 1

NOTE:
 FD P.K./WASHER ON \odot
 REF 1A, P.I.

FD P.K./WASHER, ON SURFACE
 GPS, REF 1
 NORTHING: 653186.601
 EASTING: 1791743.645

FD R.R.SPIKE, 3" DOWN
 GPS, REFA1

FD R.R.SPIKE, 4 7/8" DOWN
 GPS, REFB1

FD 3/4" IPIN, 8 1/4" DOWN
 GPS, REFC1
 BRICK ROAD, PICTURE #430

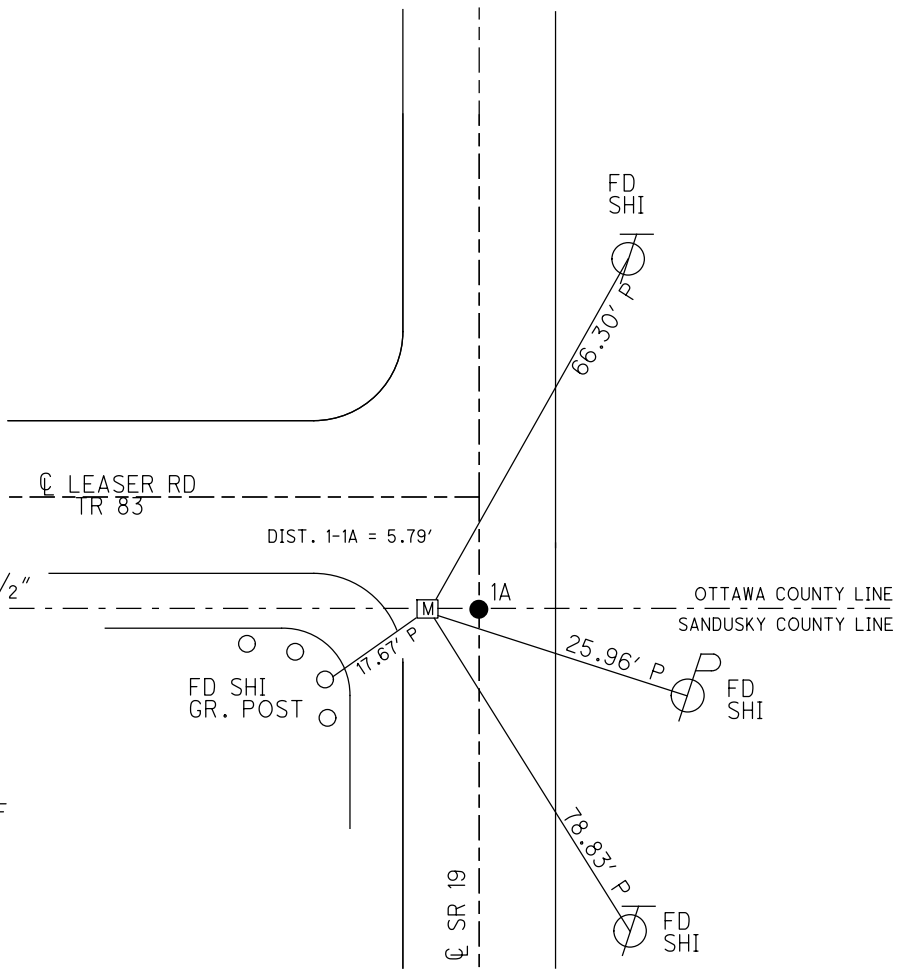
FD 1 1/2" IPIPE, 21 1/2" DOWN
 GPS, REFD1
 BENT SOUTHEASTERLY.
 PICTURE #431

FD STONE, 27" DOWN. 7X3X4 1/2"
 GPS, REFE1
 PICTURE #432-434

08-05-2014 EBW, JLL, JBT &
 JEFF FROM OTT. CO.

UNCOVERED STONE, MARKED
 HIGH POINT FROM TIES, SHOT
 HIGH POINT WITH GPS PLACED
 IRON PIN OVER HIGH POINT OF
 STONE WITH COORDINATES.

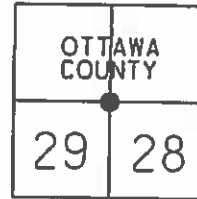
MON.BOX SET
 GPS, FINREF1
 8/7/14, EBW
 FD MONBOX
 3/19/19, JFO
 FD MONBOX
 8/22/19, JMR



O.D.O.T. DISTRICT 2 SURVEY OFFICE (USE ONLY)

PERSONNEL _____ REFERENCE NO. 25 SHEET 12 OF 13
 NOTES CANTERBURY DATE 5/7/07 ROUTE SR 19
 H.C. HOMAN WEATHER SUNNY COUNTY SANDUSKY
 R.C. SAPP TEMP. 60° TOWNSHIP RICE
 _____ SECTION 29
 _____ T 6 N R 15 E

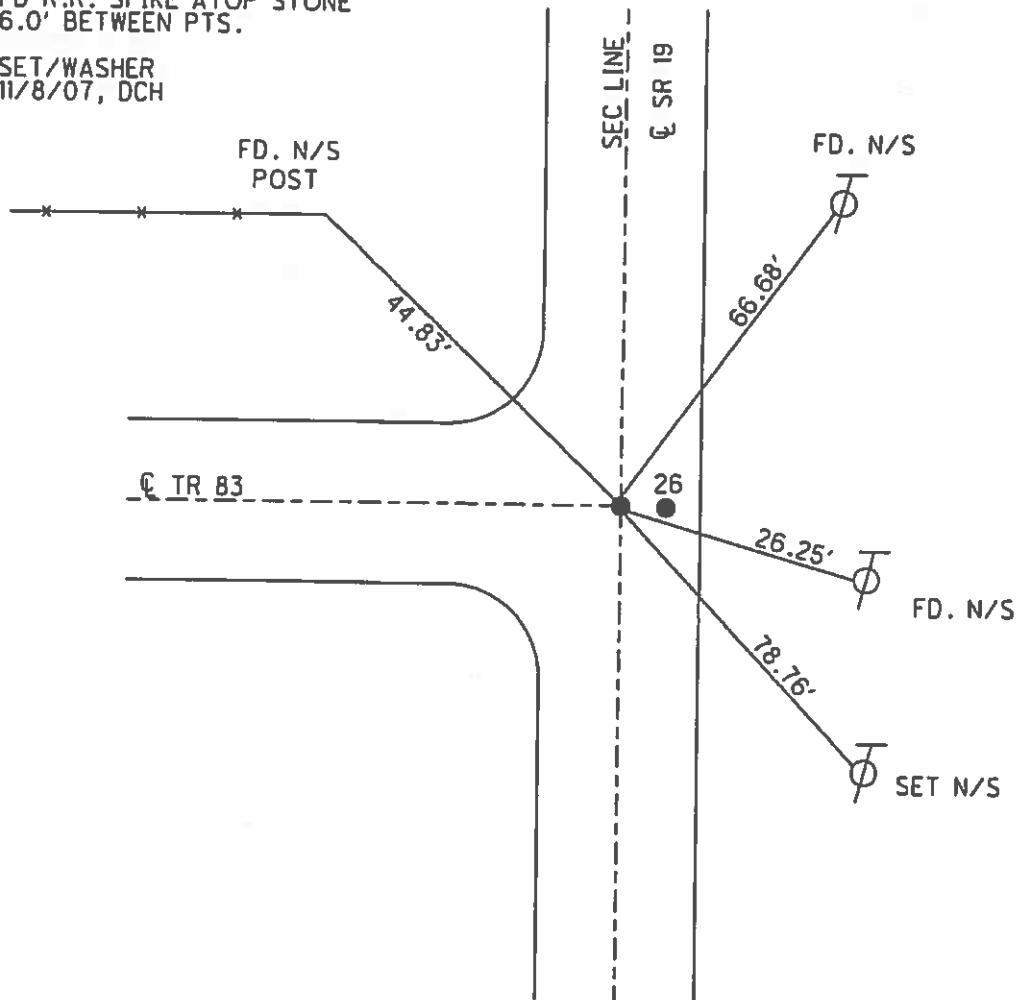
TYPE MONUMENT R.R. SPIKE
~~ON SURFACE~~ - BELOW 3"
 LEFT - ~~C~~ PAV'T - RIGHT 6'
4.8' TOLT EDGE PAVEMENT
 S.L.M. 922+94.4
 GPS NORTHING: 653186.604 EASTING: 1791743.619



RECORD:
 FD R.R. SPIKE ATOP STONE
 6.0' BETWEEN PTS.

DIST. 25-26= 10.4'

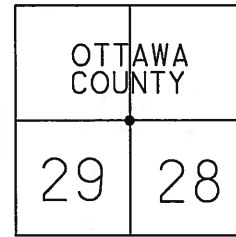
SET/WASHER
 11/8/07, DCH



O.D.O.T. DISTRICT 2 SURVEY OFFICE (USE ONLY)

PERSONNEL _____ REFERENCE NO. _____ SHEET 11 OF 12
 NOTES CANTERBURY DATE 05-07-07 ROUTE SR 19
 H.C. HOMAN WEATHER SUNNY COUNTY SANDUSKY
 R.C. SAPP TEMP. +60° TOWNSHIP RICE
 _____ SECTION 29
 _____ T 6 N R 15 E

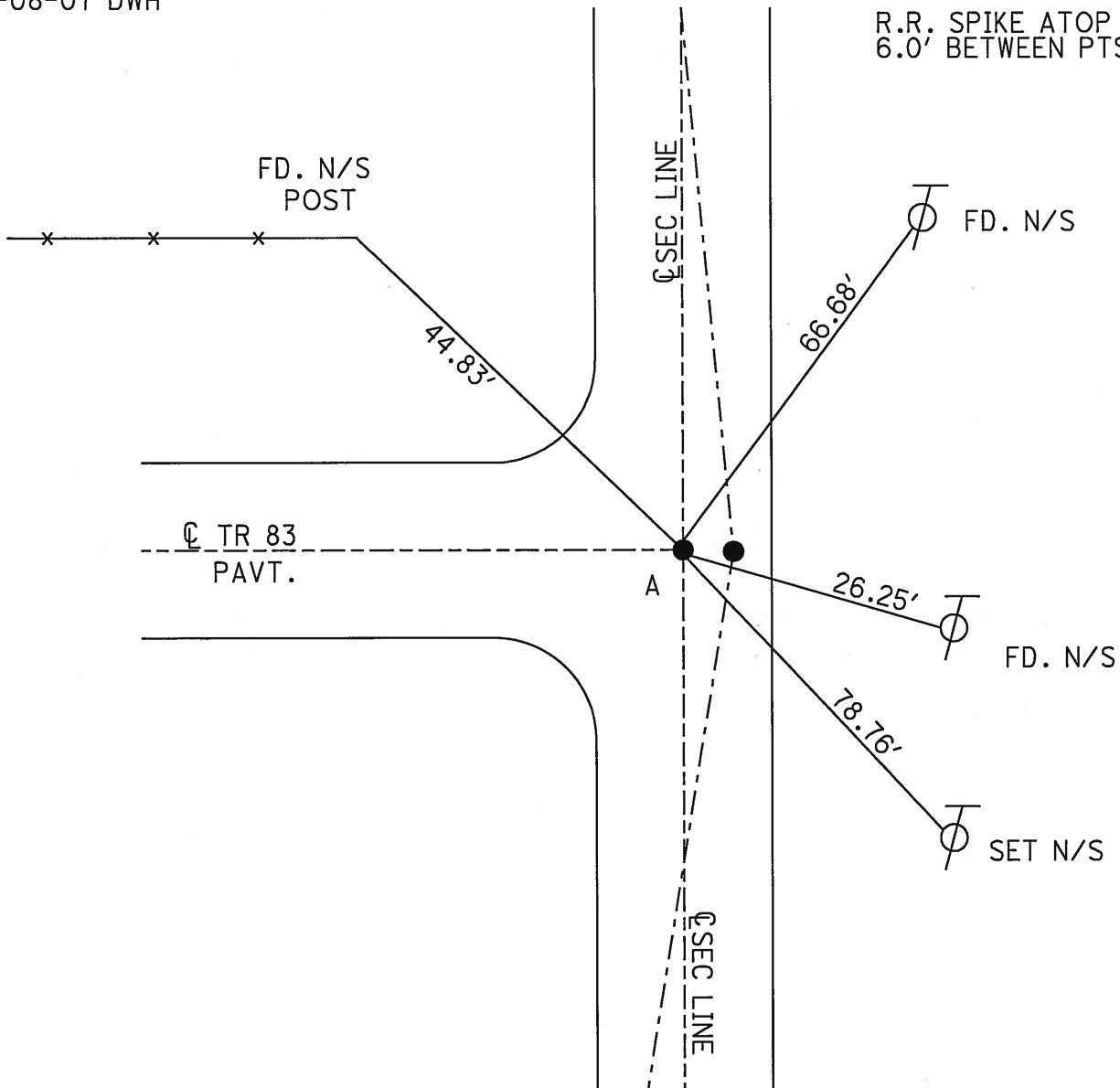
TYPE MONUMENT FD. R.R. SPIKE
~~ON SURFACE~~ - BELOW 3" DOWN
 LEFT - C PAV'T - RIGHT 6' LT.
4.8' TO LT. EDGE PAVEMENT
 S.L.M. (SV14)
 GPS Northing: 653186.604 Easting: 1791743.619



25

A=SET MAG/WASHER
 11-08-07 DWH

NOTE: 10.4' SOUTH OF CL TR. 83
 R.R. SPIKE ATOP STONE
 6.0' BETWEEN PTS.



O.D.O.T. DISTRICT 2 SURVEY OFFICE

PERSONNEL _____

REFERENCE NO. _____

SHEET _____ OF _____

NOTES CROWN

H.C. RIPPLE

R.C. GEYMAN

DATE 7/23/90

WEATHER SUNNY

TEMP. 80°

ROUTE #19

COUNTY SANDUSKY

TOWNSHIP RICE

SECTION _____

T 6 N R 15 E

TYPE MONUMENT R.R. SPIKE

ON SURFACE - BELOW 5" t

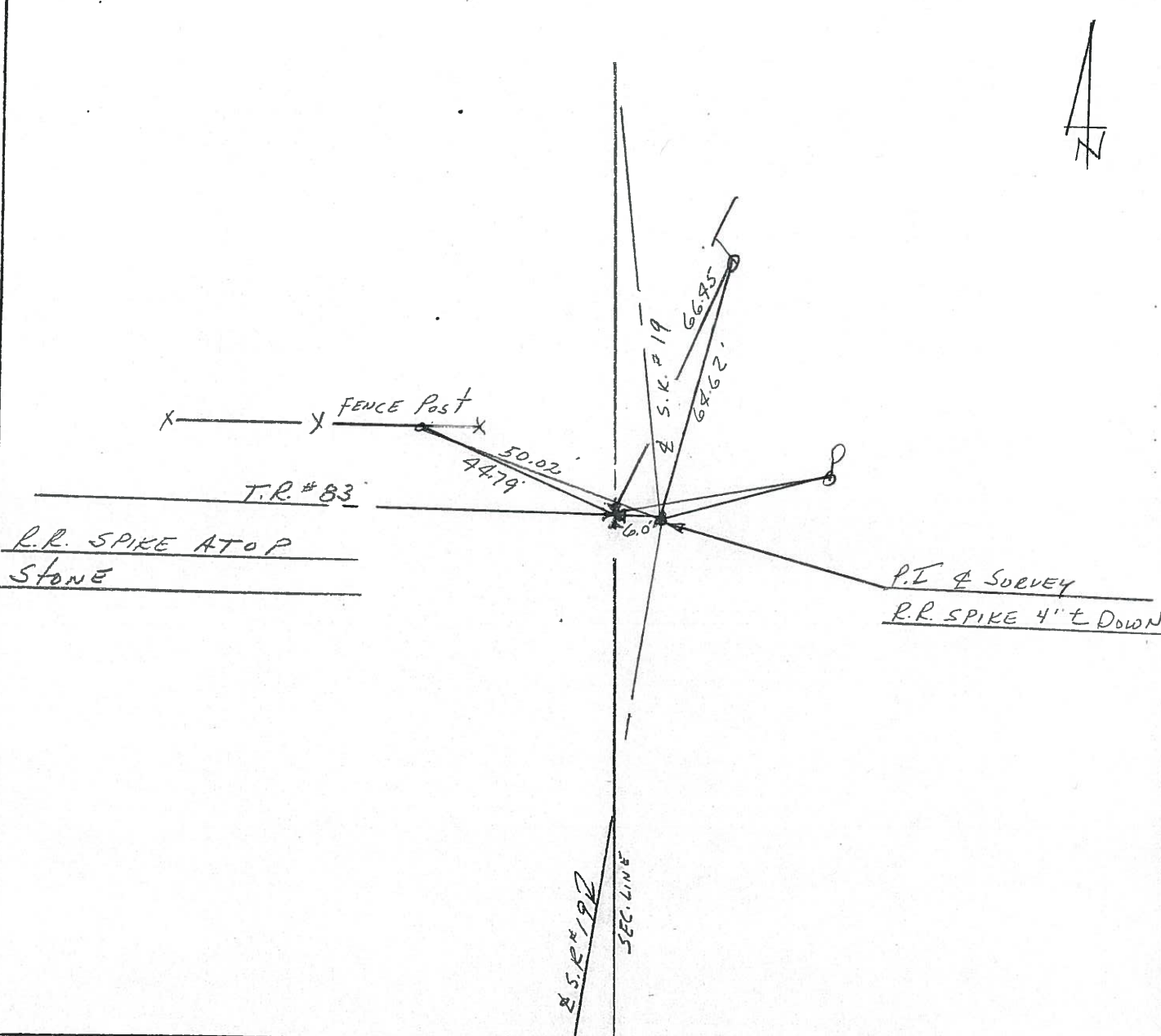
LEFT - & PAV'T. - RIGHT 6'

TO _____ EDGE PAVEMENT

S.L.M. _____

25

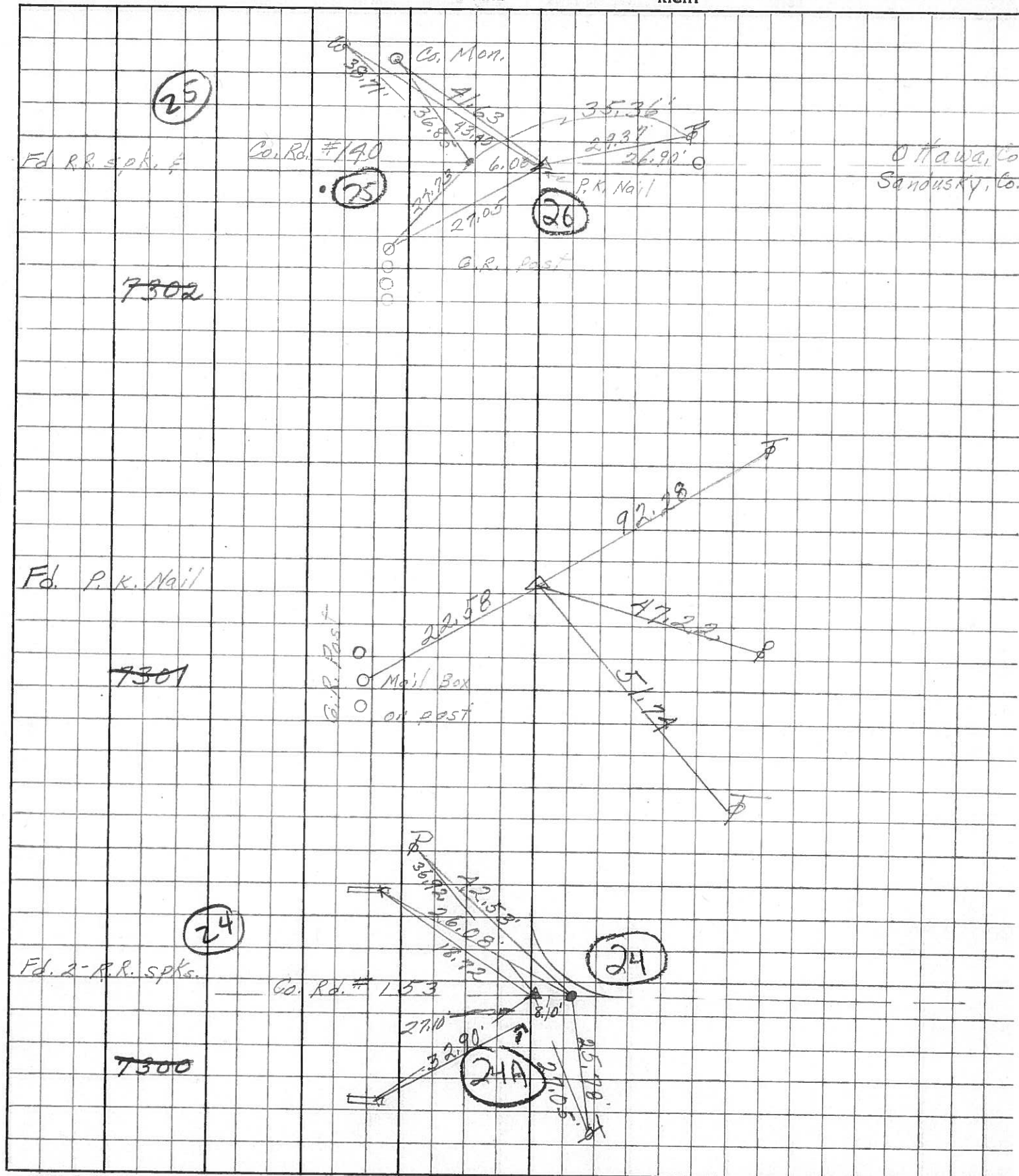
20	21
29	28



PERSONNEL	TITLE	PERSONNEL	TITLE
Schneider		Potts	
Mosser			
Barbour			
Redding			

COUNTY Sandusky DATE Feb. 1968
 S. R. # 19 WEATHER _____
 SEC. North of Fremont TEMP. _____

DESCRIPTION Ties for Control Points LEFT CENTER LINE RIGHT JOB NO. _____



PERSONNEL TITLE PERSONNEL TITLE

Schneider Zohn
Hawk Schwartz
Masser
Snyder

COUNTY Sandusky DATE 8-30-62

S. R. # 19 WEATHER F

SEC. TEMP.

DESCRIPTION Ties for Control Points LEFT CENTER LINE RIGHT JOB NO.

