

O.D.O.T. DISTRICT 2 SURVEY OFFICE (USE ONLY)

PERSONNEL \_\_\_\_\_

REFERENCE NO. 1

SHEET 1 OF 6

NOTES LOEHRKE

DATE 7/13/95

ROUTE SR 51

H.C. CANTERBURY

WEATHER FAIR

COUNTY SANDUSKY

R.C. ROUSOS

TEMP. 95°

TOWNSHIP WOODVILLE

SLOVAK

SECTION 1

DWG BY NIESE PID \_\_\_\_\_

T 5 N R 13 E

TYPE MONUMENT MONBOX

ON SURFACE - ~~BELOW~~ ON

OFFSET CL PAVEMENT ON LT : RT

- TO - EDGE PAVEMENT

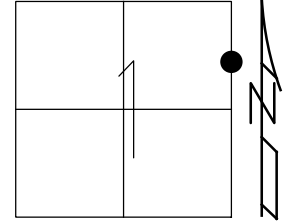
STATION: 0+00

HORIZ. DATUM: \_\_\_\_\_

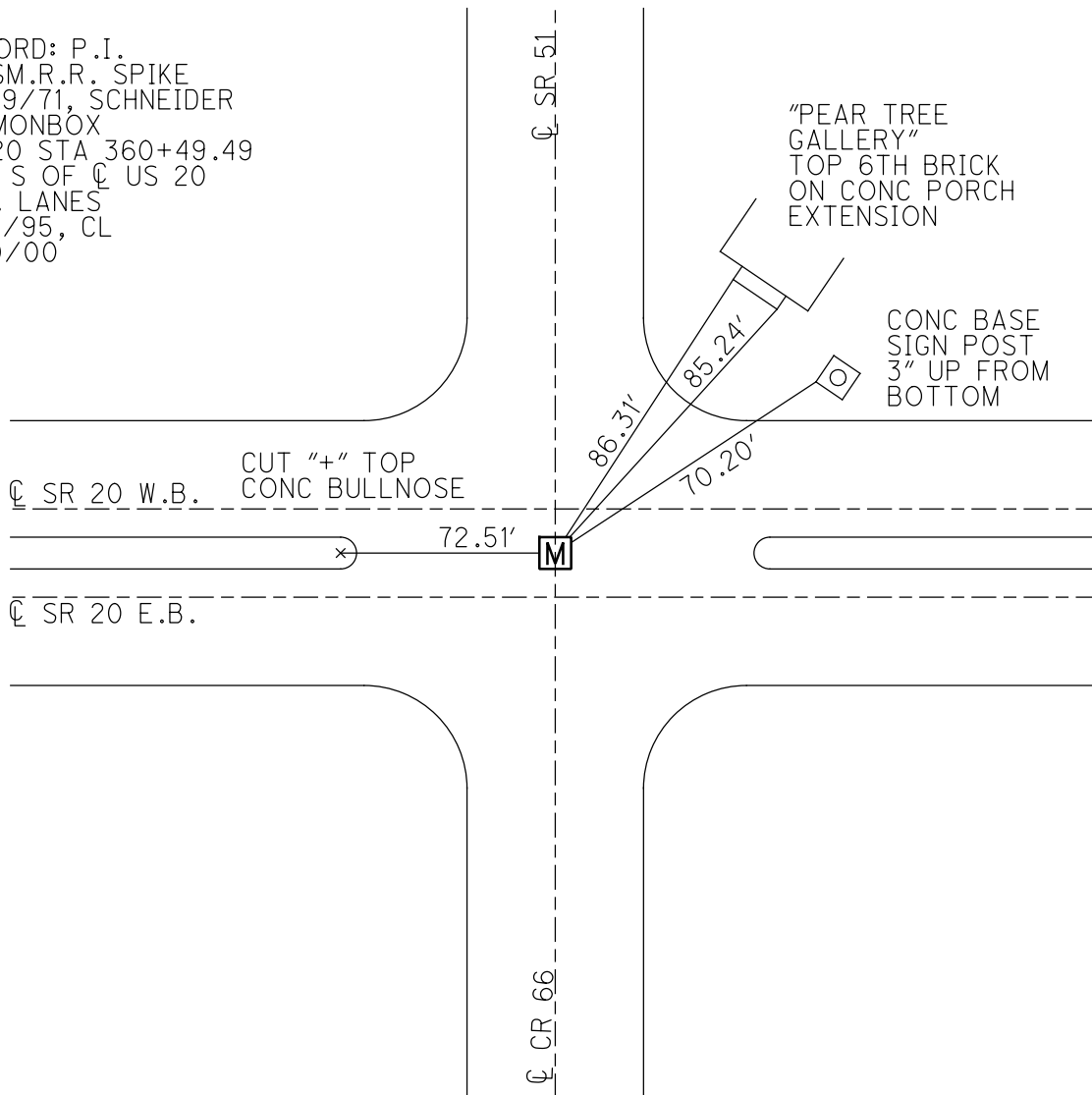
GEOID: \_\_\_\_\_

GRID: NORTHING: \_\_\_\_\_

EASTING: \_\_\_\_\_



RECORD: P.I.  
FD SM.R.R. SPIKE  
12/29/71, SCHNEIDER  
FD MONBOX  
US 20 STA 360+49.49  
9.7' S OF CL US 20  
W.B. LANES  
7/13/95, CL  
5/10/00



O.D.O.T. DISTRICT 2 SURVEY OFFICE (USE ONLY)

PERSONNEL \_\_\_\_\_

REFERENCE NO. 2

SHEET 2 OF 6

NOTES ROUSOS

DATE 5/10/00

ROUTE SR 51

H.C. HUSS

WEATHER CLOUDY

COUNTY SANDUSKY

R.C. VAN DUSEN

TEMP. 50°

TOWNSHIP WOODVILLE

SECTION 36

DWG BY NIESE PID \_\_\_\_\_

T 6 N R 13 E

TYPE MONUMENT P.K. NAIL

ON SURFACE - ~~BELOW~~ ON

OFFSET ☉ PAVEMENT ON LT : RT

- TO - EDGE PAVEMENT

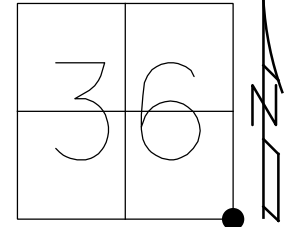
STATION: 14+52.90

HORIZ.DATUM: \_\_\_\_\_

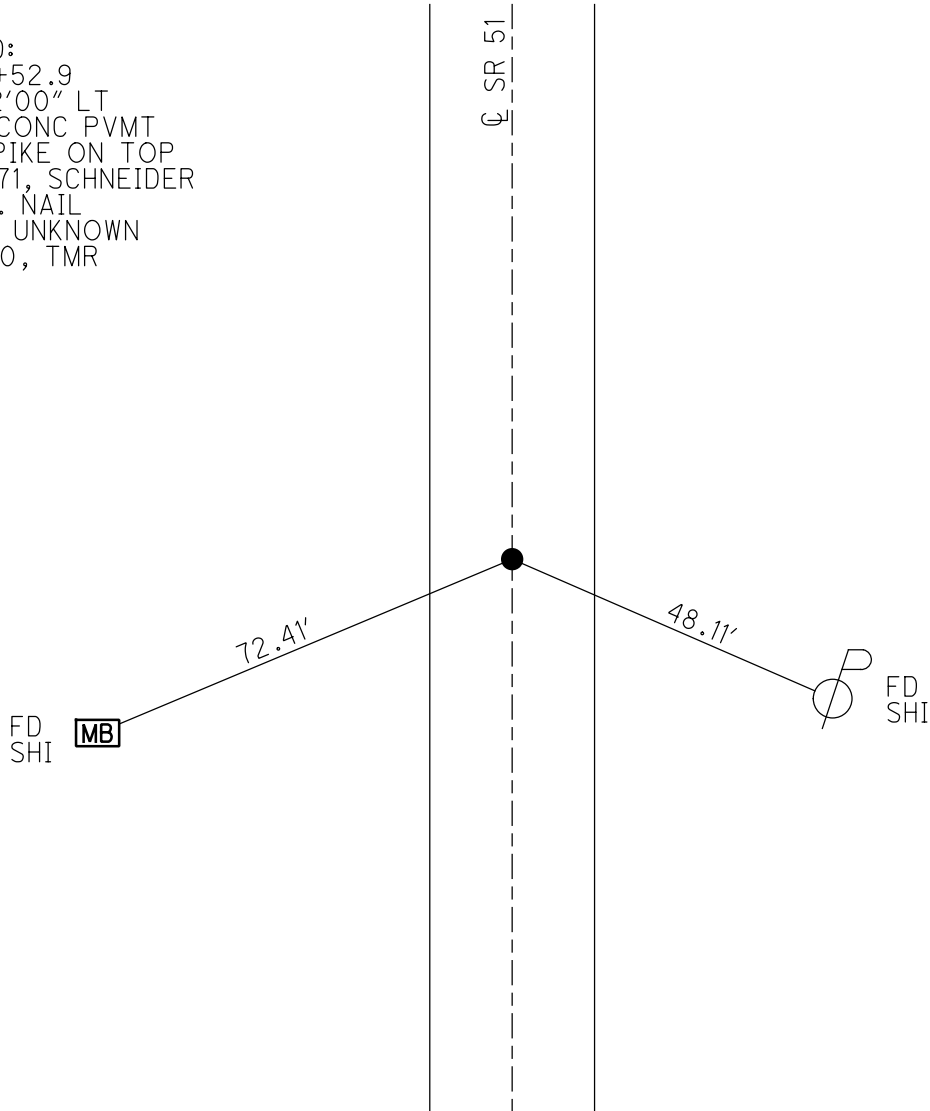
GEOID: \_\_\_\_\_

GRID: NORTHING: \_\_\_\_\_

EASTING: \_\_\_\_\_



RECORD:  
 STA 14+52.9  
 $\Delta = 1^{\circ}22'00''$  LT  
 "4" IN CONC PVMT  
 R.R. SPIKE ON TOP  
 12/29/71, SCHNEIDER  
 FD P.K. NAIL  
 SET BY UNKNOWN  
 5/10/00, TMR



O.D.O.T. DISTRICT 2 SURVEY OFFICE (USE ONLY)

PERSONNEL

REFERENCE NO. 3

SHEET 3 OF 6

NOTES ROUSOS

DATE 5/10/00

ROUTE SR 51

H.C. HUSS

WEATHER CLOUDY

COUNTY SANDUSKY

R.C. VAN DUSEN

TEMP. 50°

TOWNSHIP WOODVILLE

SECTION 36

DWG BY NIESE PID \_\_\_\_\_

T 6 N R 13 E

TYPE MONUMENT P.K. NAIL

ON SURFACE - ~~BELOW~~ ON

OFFSET ☉ PAVEMENT ON LT : RT

- TO - EDGE PAVEMENT

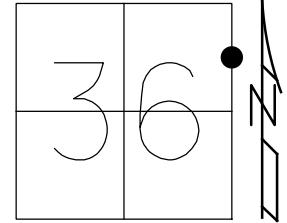
STATION: 54+14.65

HORIZ.DATUM: \_\_\_\_\_

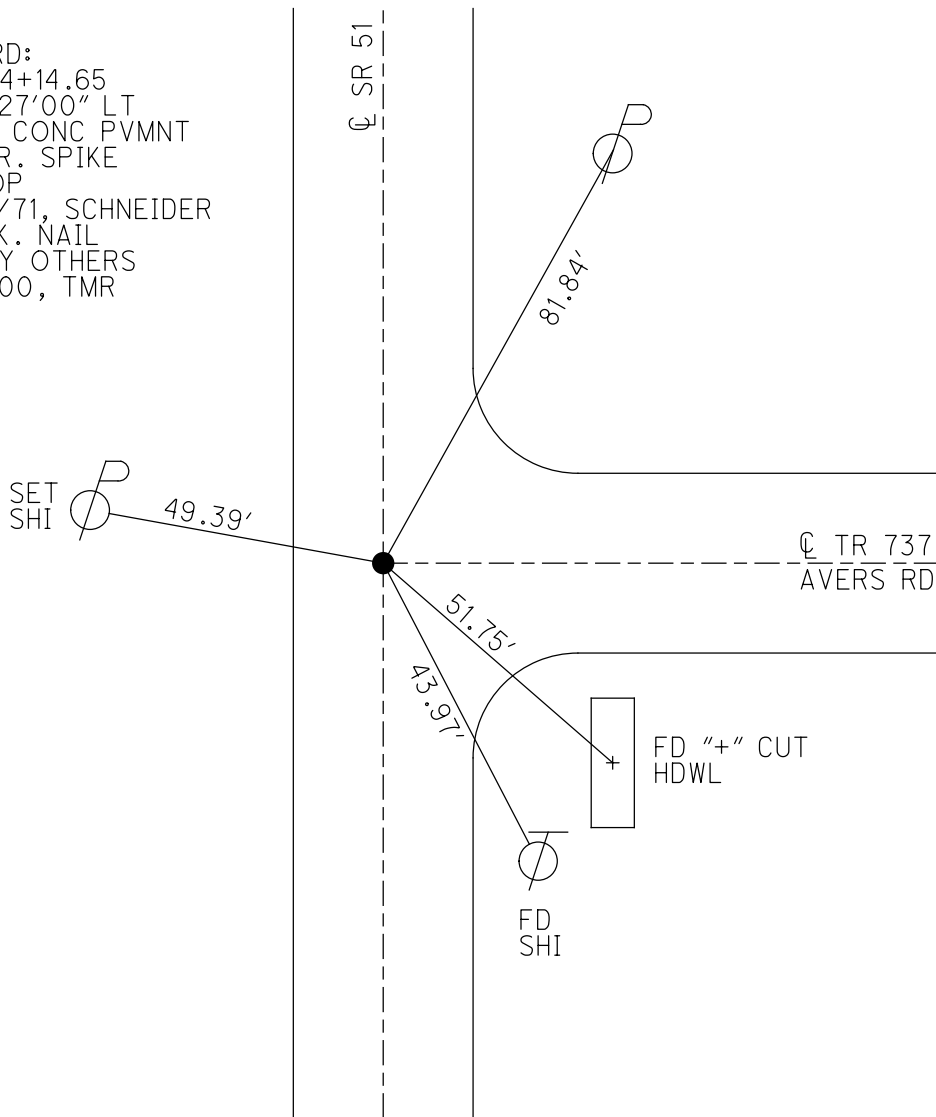
GEOID: \_\_\_\_\_

GRID: NORTHING: \_\_\_\_\_

EASTING: \_\_\_\_\_



RECORD:  
 STA 54+14.65  
 $\Delta = 0^{\circ}27'00''$  LT  
 "+" IN CONC PVMNT  
 SM.R.R. SPIKE  
 ON TOP  
 12/29/71, SCHNEIDER  
 FD P.K. NAIL  
 SET BY OTHERS  
 5/10/00, TMR



O.D.O.T. DISTRICT 2 SURVEY OFFICE (USE ONLY)

PERSONNEL \_\_\_\_\_

REFERENCE NO. 4

SHEET 4 OF 6

NOTES ROUSOS  
 H.C. HUSS  
 R.C. VAN DUSEN

DATE 5/10/00  
 WEATHER CLOUDY  
 TEMP. 50°

ROUTE SR 51  
 COUNTY SANDUSKY  
 TOWNSHIP WOODVILLE  
 SECTION 36  
 T 6 N R 13 E

DWG BY NIESE PID \_\_\_\_\_

TYPE MONUMENT P.K. NAIL

~~ON SURFACE~~ - BELOW 3"

OFFSET ☉ PAVEMENT ON \_\_\_\_\_ LT : RT

- TO - EDGE PAVEMENT

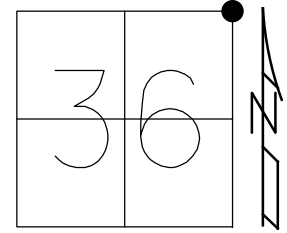
STATION: 67+60

HORZ. DATUM: \_\_\_\_\_

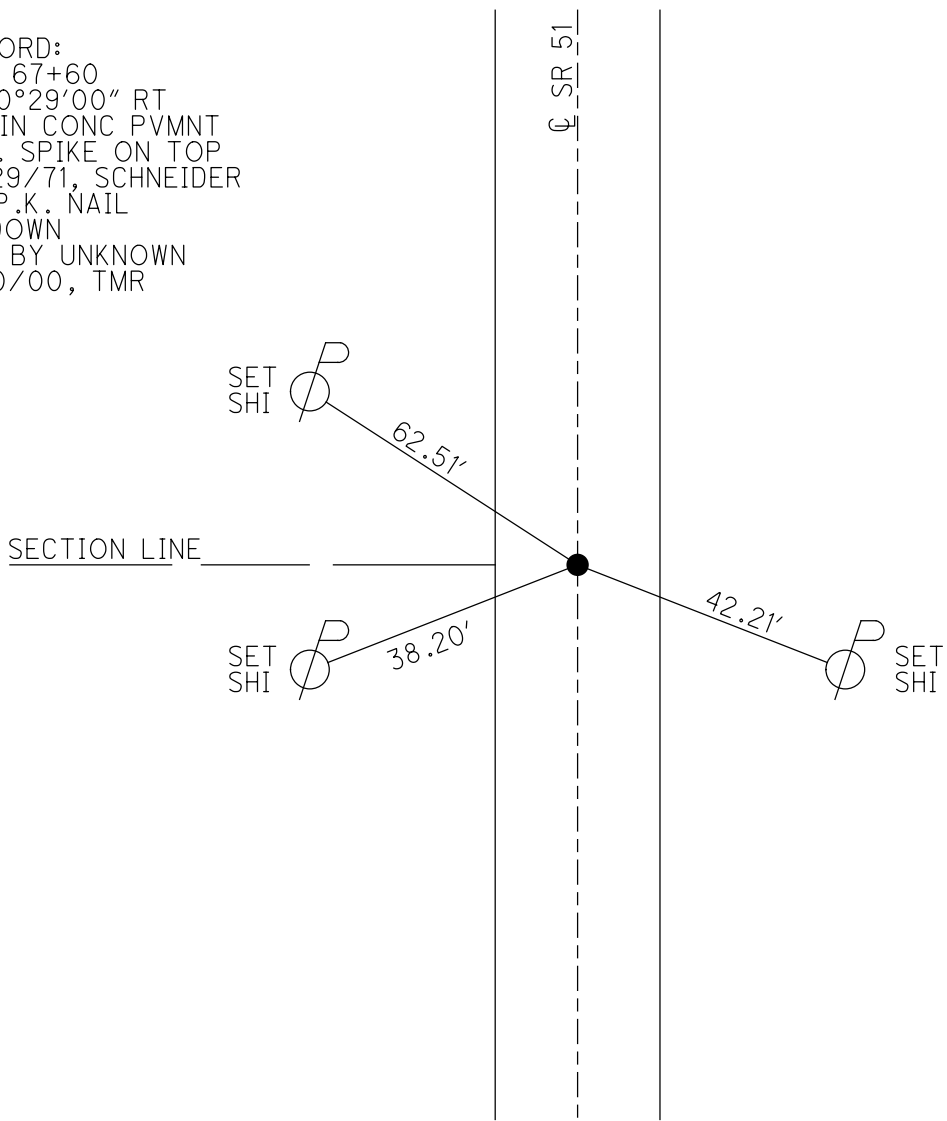
GEOID: \_\_\_\_\_

GRID: NORTHING: \_\_\_\_\_

EASTING: \_\_\_\_\_



RECORD:  
 STA 67+60  
 $\Delta = 0^{\circ}29'00''$  RT  
 "+" IN CONC PVMNT  
 R.R. SPIKE ON TOP  
 12/29/71, SCHNEIDER  
 FD P.K. NAIL  
 3" DOWN  
 SET BY UNKNOWN  
 5/10/00, TMR



O.D.O.T. DISTRICT 2 SURVEY OFFICE (USE ONLY)

PERSONNEL \_\_\_\_\_

REFERENCE NO. 5

SHEET 5 OF 6

NOTES POORE

DATE 6/26/17

ROUTE SR 51

H.C. LEU

WEATHER SUNNY

COUNTY SANDUSKY

R.C. CARSON  
HOMAN

TEMP. 72°

TOWNSHIP WOODVILLE

DWG BY NIESE

PID \_\_\_\_\_

SECTION 25

T 6 N R 13 E

TYPE MONUMENT P.K. NAIL

ON SURFACE - ~~BELOW~~ ON

OFFSET  $\odot$  PAVEMENT ON LT : RT

- TO - EDGE PAVEMENT

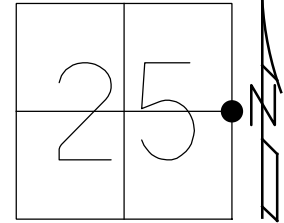
STATION: 95+04

HORIZ. DATUM: NAD83 2011

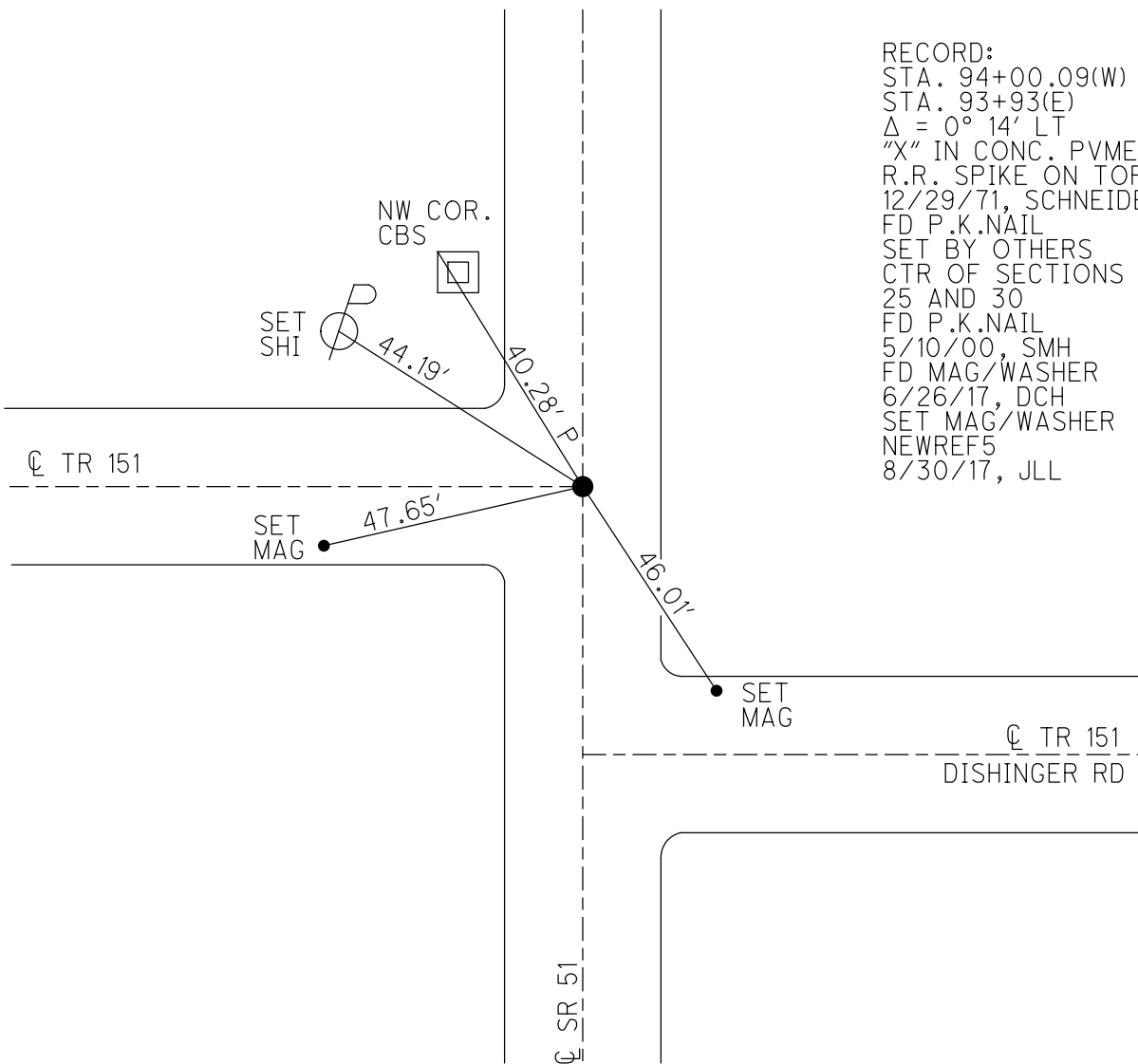
GEOID: NAVD88 2012A

GRID: NORTHING: 650929.891

EASTING: 1749347.286



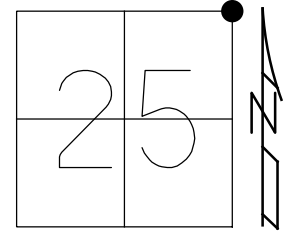
RECORD:  
 STA. 94+00.09(W)  
 STA. 93+93(E)  
 $\Delta = 0^\circ 14' \text{ LT}$   
 "X" IN CONC. PVMNT  
 R.R. SPIKE ON TOP  
 12/29/71, SCHNEIDER  
 FD P.K.NAIL  
 SET BY OTHERS  
 CTR OF SECTIONS  
 25 AND 30  
 FD P.K.NAIL  
 5/10/00, SMH  
 FD MAG/WASHER  
 6/26/17, DCH  
 SET MAG/WASHER  
 NEWREF5  
 8/30/17, JLL



O.D.O.T. DISTRICT 2 SURVEY OFFICE (USE ONLY)

PERSONNEL \_\_\_\_\_ REFERENCE NO. 6 SHEET 6 OF 6  
 NOTES POORE DATE 6/26/17 ROUTE SR 51  
 H.C. LEU WEATHER SUNNY COUNTY SANDUSKY  
 R.C. CARSON TEMP. 72° TOWNSHIP WOODVILLE  
           HOMAN SECTION 25  
 DWG BY NIESE PID \_\_\_\_\_ T 6 N R 13 E

TYPE MONUMENT MAG NAIL/WASHER  
 ON SURFACE - ~~BELOW~~ ON  
 OFFSET  $\varnothing$  PAVEMENT ON LT : RT  
17.0' TO RT EDGE PAVEMENT  
 STATION: 120+38.4



HORIZ.DATUM: NAD83 2011 GEOID: NAVD88 2012A  
 GRID: NORTHING: 653552.341 EASTING: 1749345.865

RECORD:  
 STA. 120+31  
 $\Delta = 0^\circ 09' \text{ LT}$   
 "X" IN CONC. PVMT  
 R.R. SPIKE ON TOP  
 12/29/71, SCHNEIDER  
 FD MAG/WASHER  
 5/10/00, SMH  
 FD MAG/WASHER  
 6/26/17, JLL  
 FD MAG/WASHER  
 NEWREF6  
 8/30/2017, JLL

