

O.D.O.T. DISTRICT 2 SURVEY OFFICE (USE ONLY)

PERSONNEL \_\_\_\_\_

REFERENCE NO. 2

SHEET 2 OF 6

NOTES ROUSOS

DATE 5/10/00

ROUTE SR 51

H.C. HUSS

WEATHER CLOUDY

COUNTY SANDUSKY

R.C. VAN DUSEN

TEMP. 50°

TOWNSHIP WOODVILLE

SECTION 36

DWG BY NIESE PID \_\_\_\_\_

T 6 N R 13 E

TYPE MONUMENT P.K. NAIL

ON SURFACE - ~~BELOW~~ ON

OFFSET 0 PAVEMENT ON LT : RT

- TO - EDGE PAVEMENT

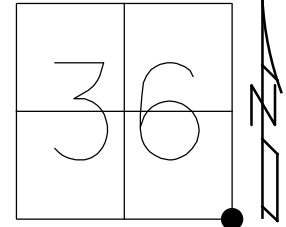
STATION: 14+52.90

HORIZ.DATUM: \_\_\_\_\_

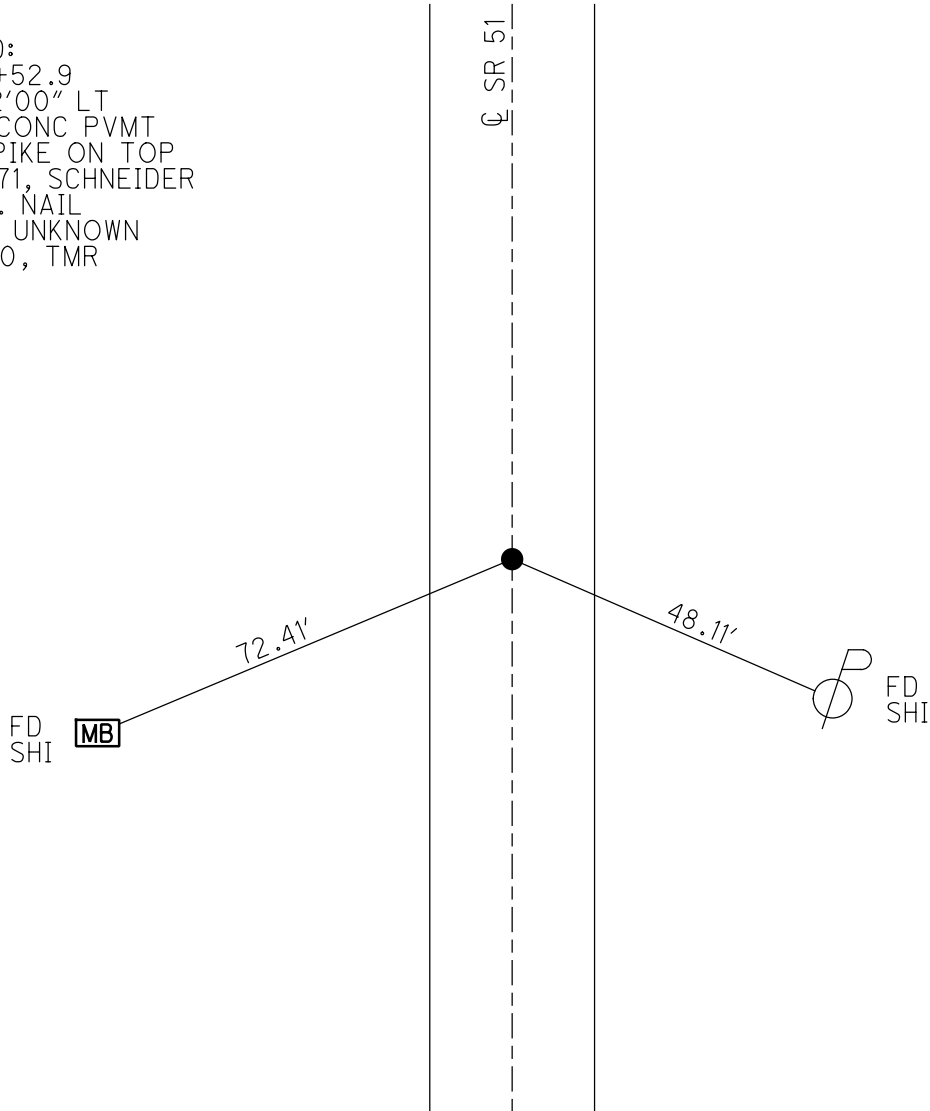
GEOID: \_\_\_\_\_

GRID: NORTHING: \_\_\_\_\_

EASTING: \_\_\_\_\_



RECORD:  
 STA 14+52.9  
 $\Delta = 1^{\circ}22'00''$  LT  
 4" IN CONC PVMT  
 R.R. SPIKE ON TOP  
 12/29/71, SCHNEIDER  
 FD P.K. NAIL  
 SET BY UNKNOWN  
 5/10/00, TMR



# O.D.O.T. DISTRICT 2 SURVEY OFFICE

PERSONNEL \_\_\_\_\_

REFERENCE NO. 2

SHEET \_\_\_\_\_ OF \_\_\_\_\_

NOTES Rouso

H.C. Huss

R.C. VAN DUSEN

DATE 5-10-00

WEATHER Cloudy

TEMP. 50°F

ROUTE 51

COUNTY Sandusky

TOWNSHIP Woodville  
Washington

SECTION 16, 30, 31

T. 5 N. R. 13 E.

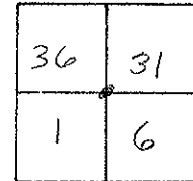
TYPE MONUMENT PK nail

ON SURFACE --BELOW ON SURFACE

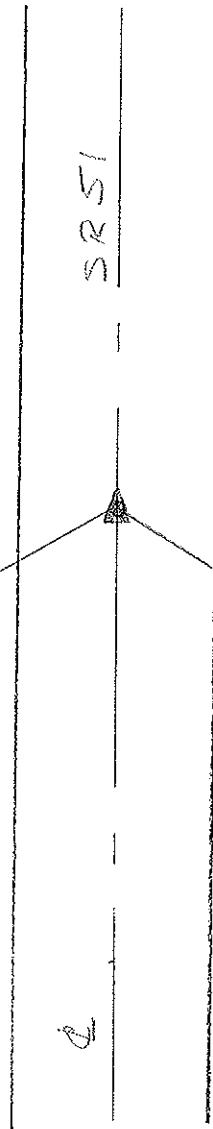
LEFT- ☉ PAV'T. --RIGHT \_\_\_\_\_

TO \_\_\_\_\_ EDGE PAVEMENT

S.L.M. 0.75



Sta 14+52.9  
4' IN conc. Pymnt.  
RR. spk. on top  
FND PK nail set by  
unknown  
 $\Delta = 1^{\circ} 22' \text{ Lt.}$

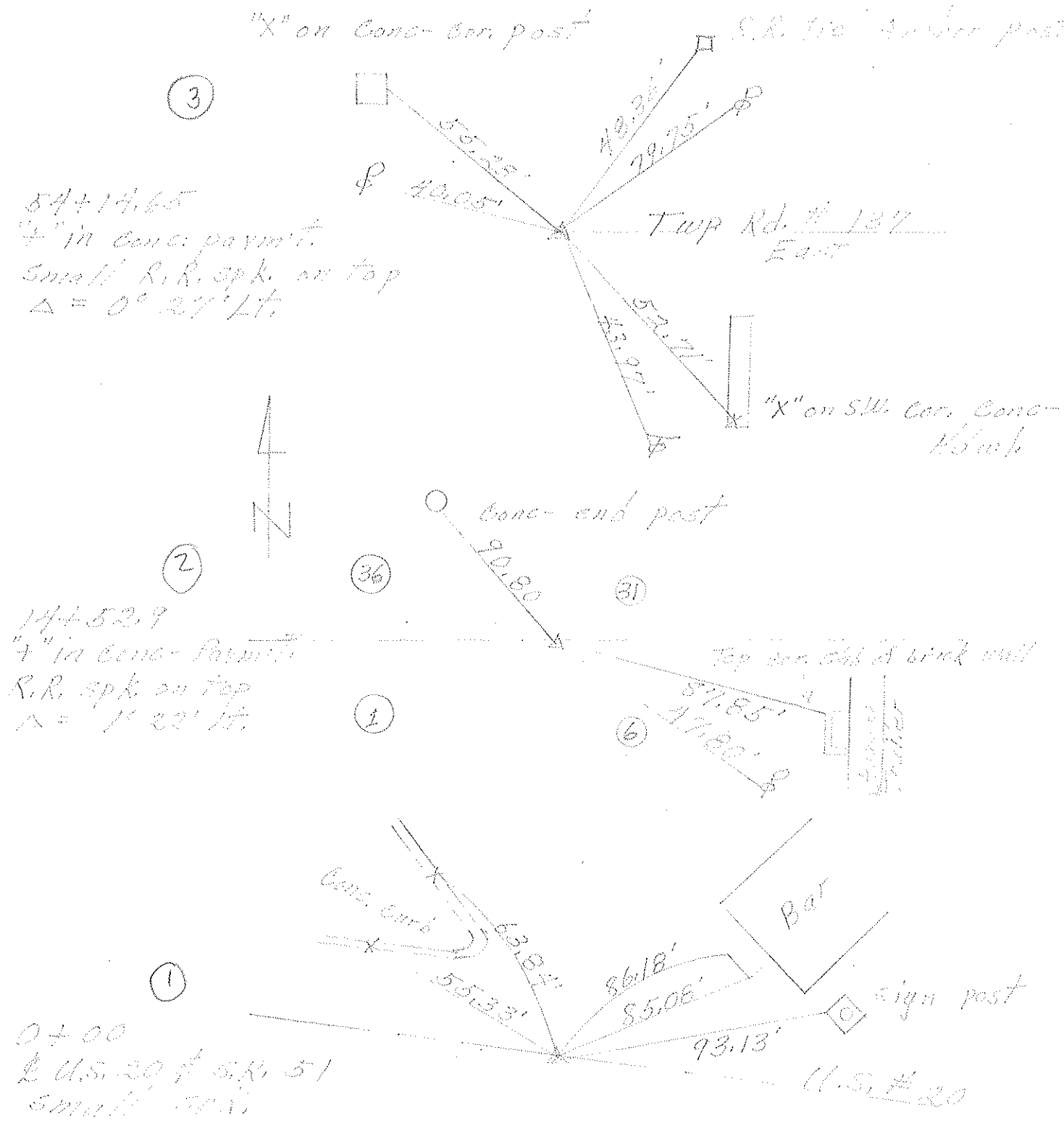


MAIL BOX Post  
FND N 56 1/2 NE 1/4

48.11  
FND N 56 1/2 NW 1/4

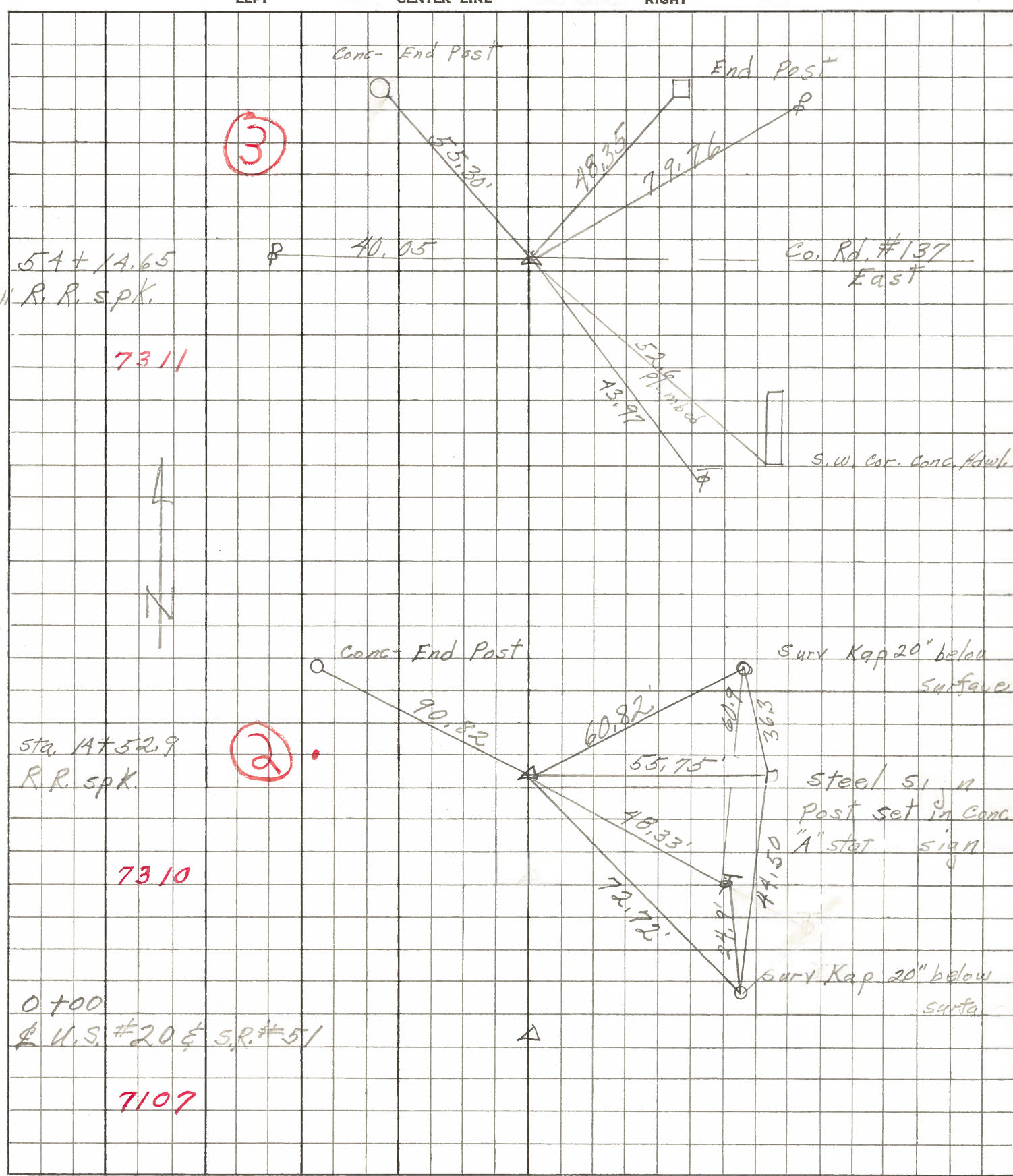
Preventive Maintenance  
Chip & Seal 2000  
Existing Point Uncovered  
Date 5-10-2000

PERSONNEL	TITLE	PERSONNEL	TITLE	COUNTY	DATE
Schneider				Sandusky	12-29-71
Masser				S. R. 51	WEATHER Fair
Barbarr				SEC. 1, 36 & 5, 31	TEMP. 30°
Seymour					
DESCRIPTION	Wardville & Washington Twp's.			JOB NO.	
	LEFT	CENTER LINE	RIGHT		



PERSONNEL	TITLE	PERSONNEL	TITLE	COUNTY	DATE
Schneider		Patt's		Sandusky	Feb. 16
Masser				S. R. 51	WEATHER
Barbour				SEC. U.S. #20 to Co. Line	TEMP.
Redding					

DESCRIPTION Ties for Center Points JOB NO. \_\_\_\_\_



3

2

54+14.65  
Small R.R. spk.

7311

Sta. 14+52.9  
R.R. spk.

7310

0+00  
U.S. #20 & S.R. #51

7107

Conc. End Post

End Post

Co. Rd. #137  
East

S.W. Cor. Conc. Adv. L.

Surv Kap 20" below  
surface

Steel sign  
post set in conc.  
"A" stat sign

Surv Kap 20" below  
surface

