

O.D.O.T. DISTRICT 2 SURVEY OFFICE (USE ONLY)

PERSONNEL

REFERENCE NO. 24 C

SHEET 8 OF 13

NOTES RHOADES

DATE 9/25/12

ROUTE SR 101

H.C. CODER

WEATHER CLDY. FAIR

COUNTY SANDUSKY

R.C. RHOADES

TEMP. 66°

TOWNSHIP TOWNSEND

SECTION 26

T 5 N R 17 E

TYPE MONUMENT P.K. SHANK

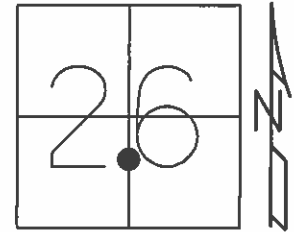
~~ON SURFACE~~ - BELOW 0.2'

LEFT - ℄ PAV'T - RIGHT ON

9.6' TO RT EDGE PAVEMENT

S.L.M. 567+00.04

Grid: Northing: 618377.289 Easting: 1868847.643

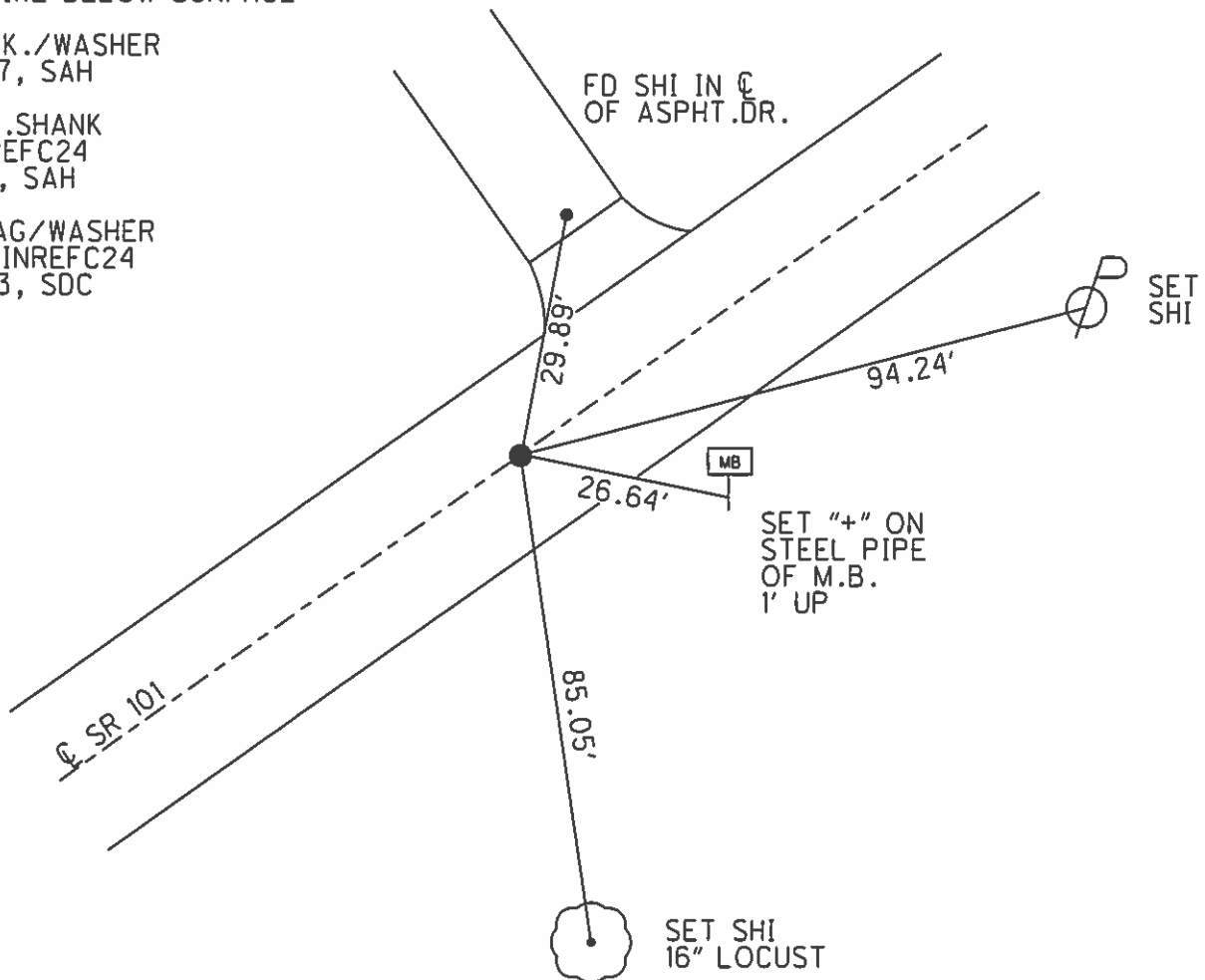


RECORD: P.I.
361+62
 $\Delta = 00^\circ 13' 00''$ LT
R.R.SPIKE BELOW SURFACE

SET P.K./WASHER
8/11/97, SAH

FD P.K.SHANK
GPS, REFC24
8/4/11, SAH

SET MAG/WASHER
GPS, FINREFC24
3/21/13, SDC



O.D.O.T. DISTRICT 2 SURVEY OFFICE

PERSONNEL _____

REFERENCE NO. _____

SHEET 33 OF 37

NOTES Huss

H.C. VanDusen

R.C. Moser

DATE 8-4-97

WEATHER Cldy-Fair

TEMP. +80°F

ROUTE 101

COUNTY Sandusky

TOWNSHIP Townsend

SECTION 26

T 5 N R 17 E

TYPE MONUMENT R.R. spike

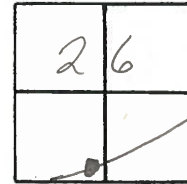
ON SURFACE - (BELOW) 2" ±

~~LEFT~~ (E PAV'T) - RIGHT E Pavt.

9.6 TO RT EDGE PAVEMENT

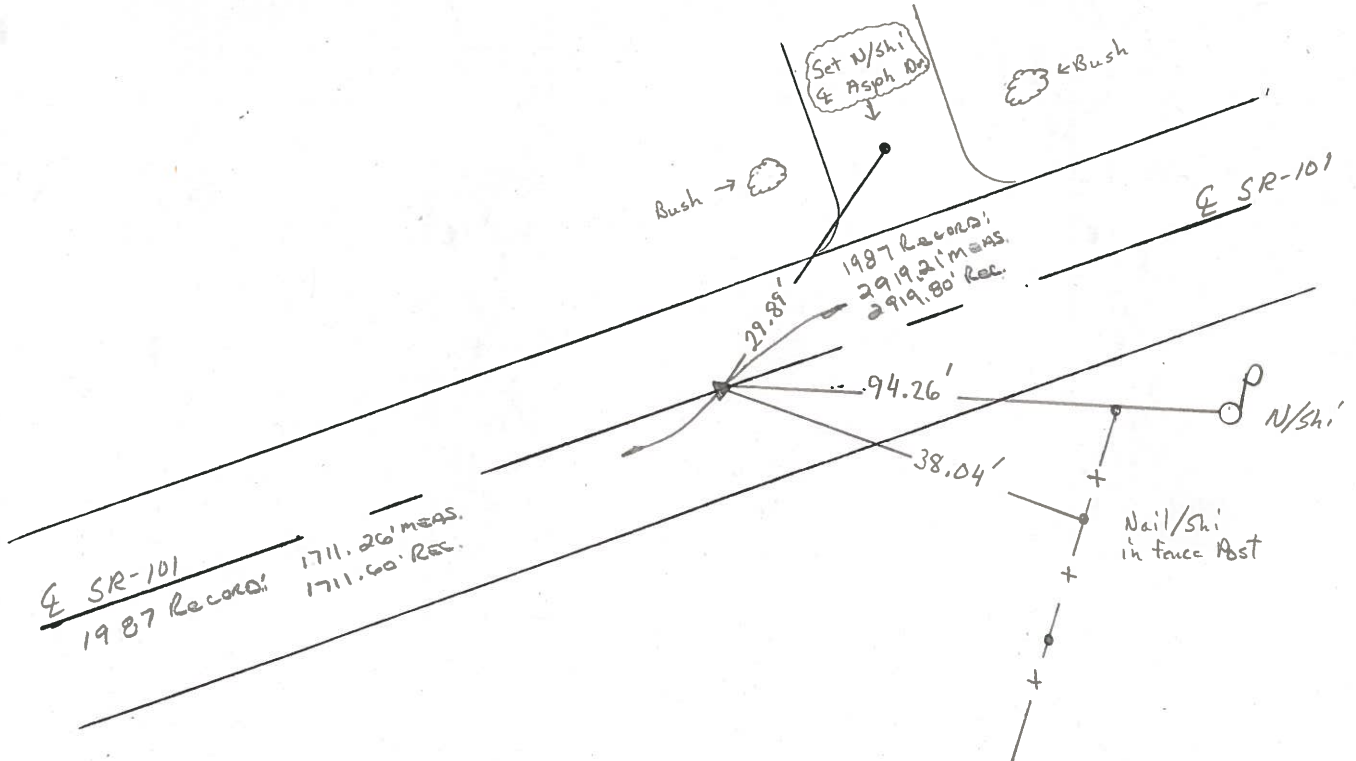
S.L.M. 17+329 SCK

240



Record: 361+62
 P.I. Δ = 00°-13'-00" Lt.
 R.R. SPIKE = Below Surface

Set PK/W
 8-11-97 SAH



O.D.O.T. DISTRICT 2 SURVEY OFFICE

PERSONNEL _____

REFERENCE NO. _____

SHEET 26 OF _____

NOTES Cronin

H.C. Ripple

R.C. Barbour

DATE 10/29/87

WEATHER sunny

TEMP. 50°

ROUTE #101

COUNTY Sandusky

TOWNSHIP Townsend

SECTION 26

T 5 N R 17 E

TYPE MONUMENT PK, washer

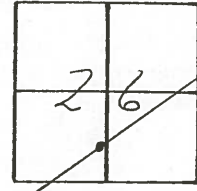
ON SURFACE - BELOW on surface

LEFT - & PAV'T. - RIGHT & Pav't.

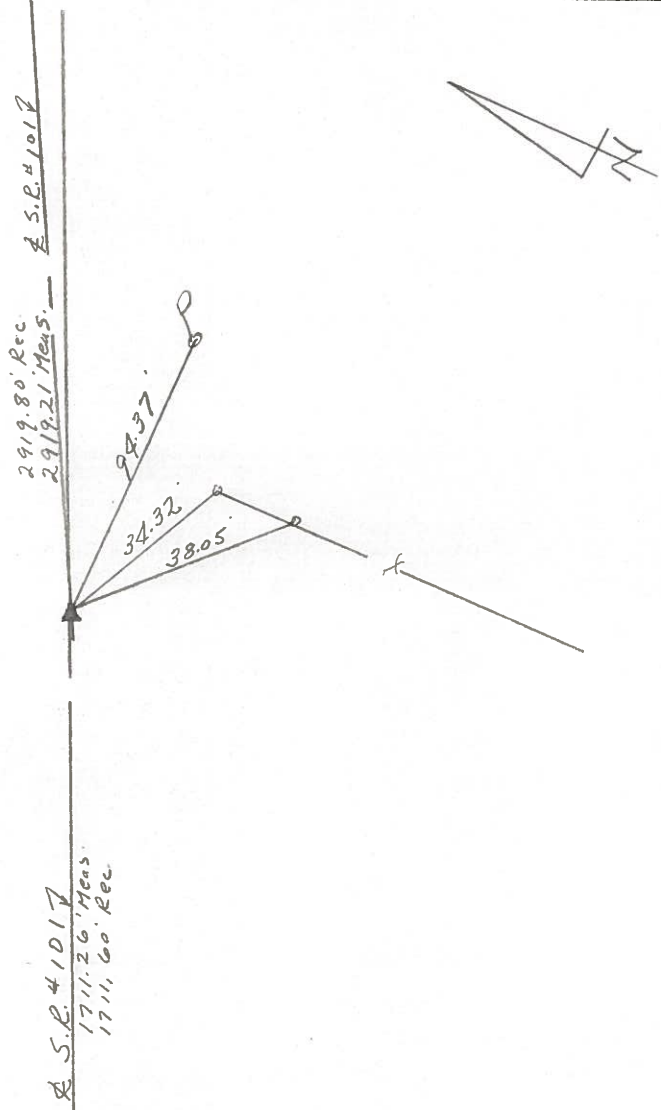
TO _____ EDGE PAVEMENT

S.L.M. old sta. 361+62

24C



P.I. Δ=00°3'00" Lt. Rec.
R.R spike below
surface



PERSONNEL TITLE PERSONNEL TITLE

COUNTY County

DATE 3/14/77

Cronin
Ripple
Geyman

S. R. #101

WEATHER overcast

SEC. San. 101-(3.88-11.90)

TEMP. 50

DESCRIPTION

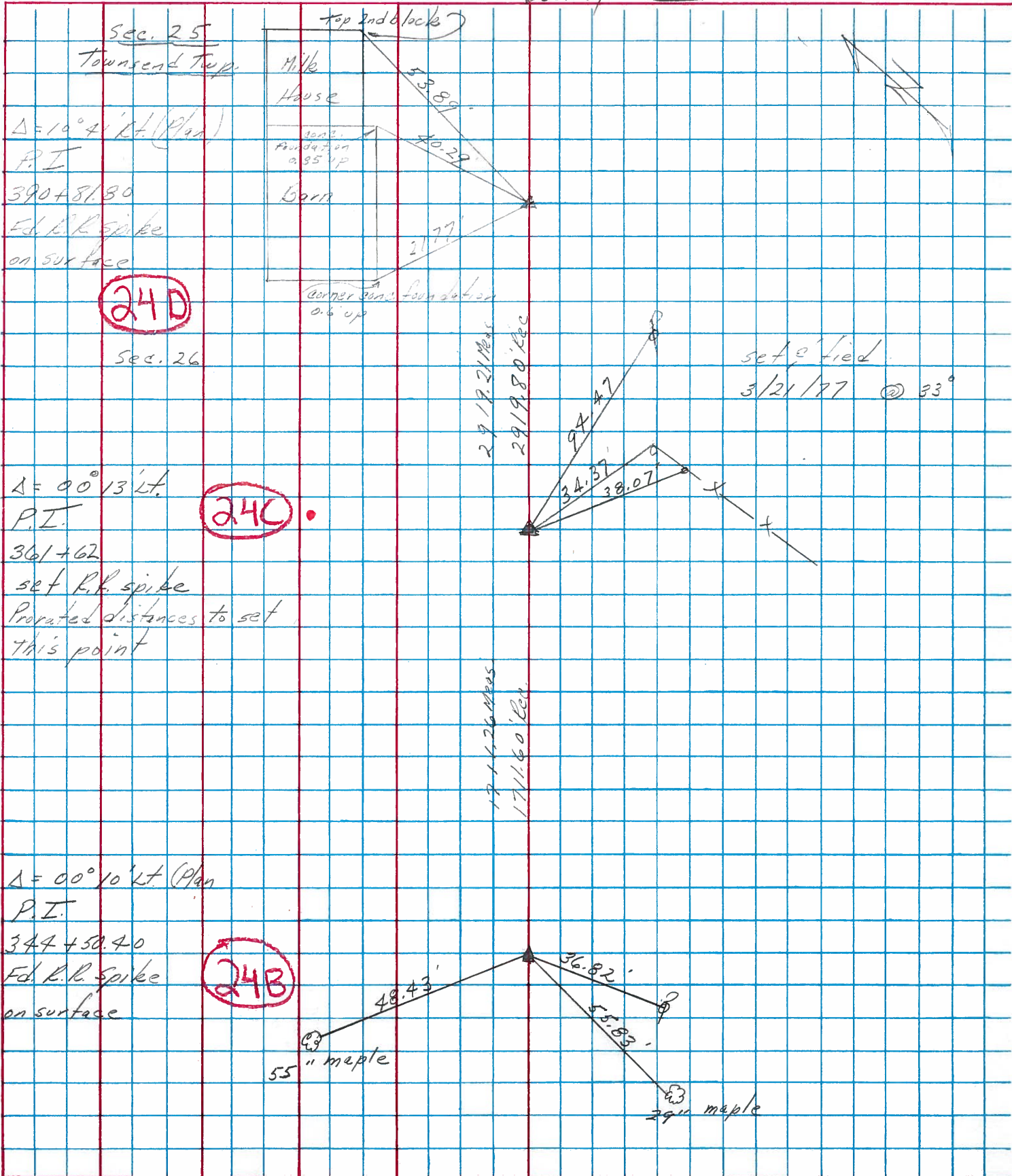
Ties for Control Points

JOB NO.

LEFT

CENTER LINE

RIGHT



PERSONNEL TITLE PERSONNEL TITLE

Schneider Potts
Mosser
Barbour
Redding

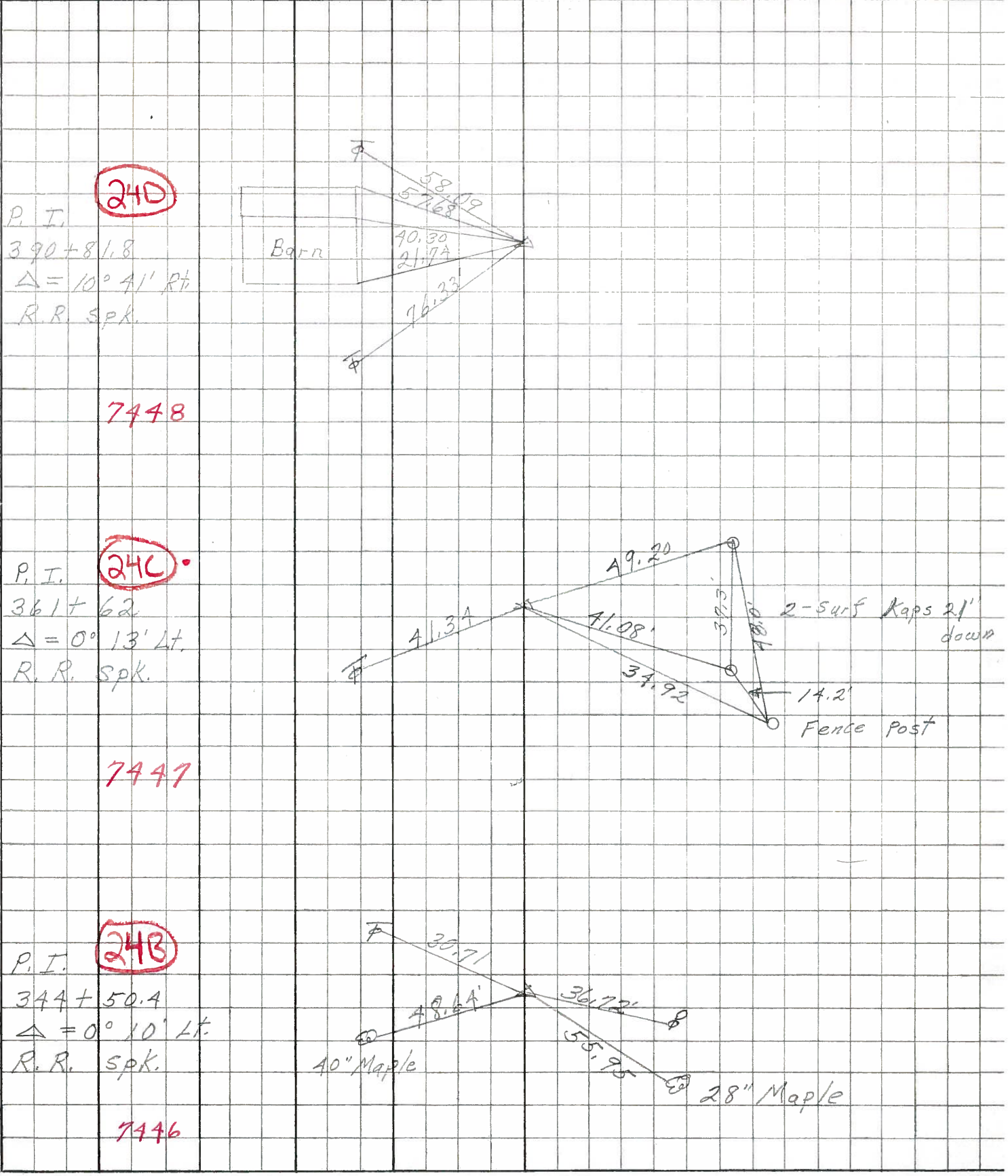
COUNTY Sandusky DATE 4-16-68

S. R. 101 WEATHER Fair

SEC. N.E. of Clyde TEMP. 60°

DESCRIPTION Ties for Control Points JOB NO.

LEFT CENTER LINE RIGHT



24D

P. I.
390 + 81.8
 $\Delta = 10^\circ 41' R\frac{1}{2}$
R.R. Spk.

7448

24C

P. I.
361 + 62
 $\Delta = 0^\circ 13' Lt.$
R.R. Spk.

7447

24B

P. I.
344 + 50.4
 $\Delta = 0^\circ 10' Lt.$
R.R. Spk.

7446

PERSONNEL	TITLE	PERSONNEL	TITLE	COUNTY	DATE
KrabiLL				Sandusky	FEB. 2, 1964
Kowaleski				S. R. #101	WEATHER
Geyman				SEC.	TEMP.
Bruggeman					

DESCRIPTION U.S. #20 North to Erie Co. Line JOB NO. _____

