

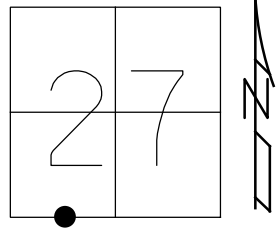
O.D.O.T. DISTRICT 2 SURVEY OFFICE (USE ONLY)

PERSONNEL _____ REFERENCE NO. 3 SHEET 3 OF 10
 NOTES MILLER DATE 12/13/18 ROUTE SR 523
 H.C. LEU WEATHER SUNNY COUNTY SANDUSKY
 R.C. MILLER TEMP. 75° TOWNSHIP RICE
 SECTION 27
 DWG BY MILLER PID 84079 T 6 N R 15 E

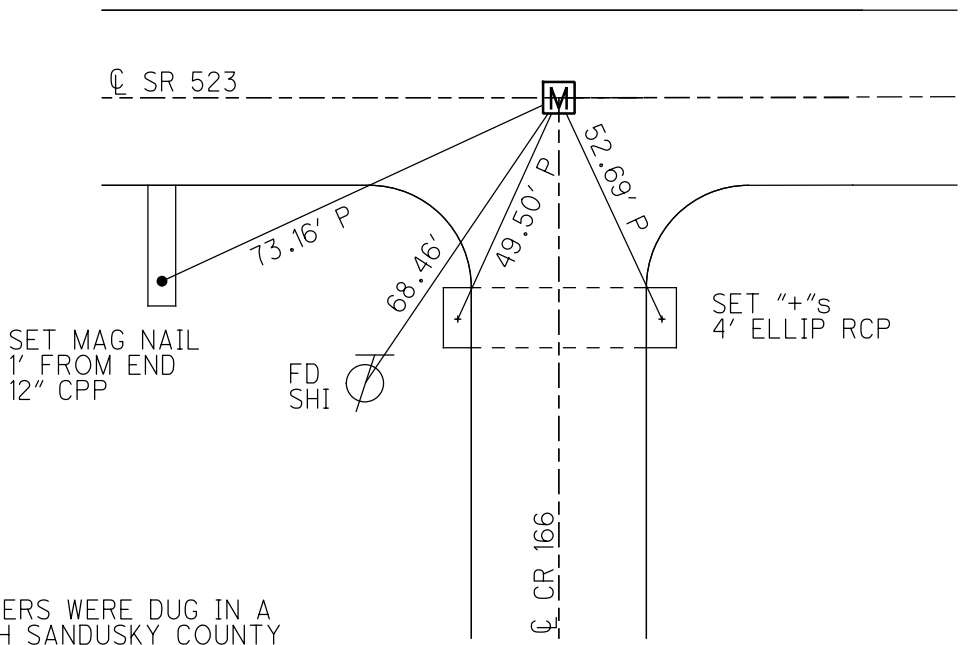
TYPE MONUMENT MON BOX W/ 1/2" I. ROD W/ DIMPLE

~~ON SURFACE~~ - BELOW 0.9'
 OFFSET 0.4' LT : ~~RT~~
9.5' TO LT EDGE PAVEMENT
 STATION: 39+43.8

HORZ. DATUM: NAD83 (2011) GEOID: 2012A
 GRID: NORTHING: 647759.596 EASTING: 1798261.480



RECORD:
 FD PK/WASHER
 ±3" DOWN
 ATOP 1/2" RE-ROD
 ±3" DOWN
 PER CO. REC.
 10-17-86
 FD PK/WASHER
 7-15-93, RCC
 SET PK/WASHER
 8-3-1993, RCC
 FD MAG NAIL
 1.5" DOWN
 7-18-17, DCH
 FD MON BOX
 W/ 1/2" IPIN
 W/ DIMPLE
 NEWREF03
 12-13-18, JLL
 FD MONBOX
 W/3/4" IPIN
 REF3
 10/1/20, JFO



NOTE:
 ALL SECTION CORNERS WERE DUG IN A
 JOINT EFFORT WITH SANDUSKY COUNTY
 ENGINEER'S OFFICE AND THE CONTRACTOR
 IN JULY 2018. SAN-523-0.00 PID #84079

FD 1/2" SMOOTH IROD 10.5" BELOW
 OREF03 7-24-18, JLL
 USED

O.D.O.T. DISTRICT 2 SURVEY OFFICE (USE ONLY)

PERSONNEL _____ REFERENCE NO. 3 SHEET 3 OF 10
 NOTES HOMAN DATE 7-18-17 ROUTE SR 523
 H.C. HOMAN WEATHER SUNNY COUNTY SANDUSKY
 R.C. CARSON TEMP. 75° TOWNSHIP RICE
 DWG BY HAGEMEYER PID 84079 SECTION 27
 T 6 N R 15 E

TYPE MONUMENT MAG NAIL

~~ON SURFACE~~ - BELOW 1.5"

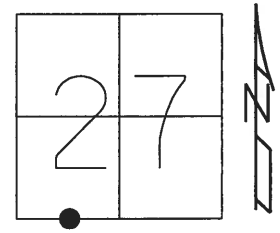
OFFSET \odot PAVEMENT 1.5' ~~LT~~ : RT

10.5' TO LT EDGE PAVEMENT

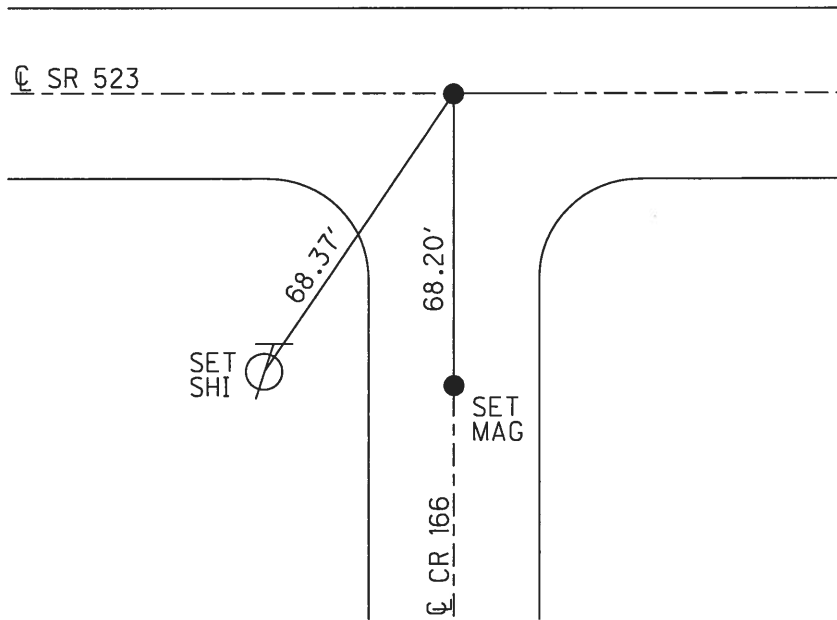
STATION: 39+55

HORZ. DATUM: - GEOID: -

GRID: NORTHING: 647759.476 EASTING: 1798261.461



RECORD:
 FD P.K./WASHER
 3"± DOWN
 ATOP 1/2" RE-ROD
 9"± DOWN
 PER CO.REC.
 10-17-86
 SET P.K./WASHER
 8-3-1993, RCC
 FD MAG NAIL
 1 1/2" DOWN
 7/18/17, DCH
 FD 3/4" SMOOTH IPIN
 10 1/2" BELOW
 REF03
 7-24-18, JLL



O.D.O.T. DISTRICT 2 SURVEY OFFICE

PERSONNEL

REFERENCE NO. 3

SHEET 3 OF 9

NOTES CHENEY

H.C. RIPPLE

R.C. GERMAN

DATE 7-15-1993

WEATHER FAIR

TEMP. 75°

ROUTE #523

COUNTY SANDUSKY

TOWNSHIP RICE

SECTION 27 & 34

T 6 N R 15 E

TYPE MONUMENT PK/WASHER

~~ON~~ SURFACE - BELOW 3"±

~~LEFT~~ - ℄ PAV'T. - RIGHT 1.5'

10.5 TO LT. EDGE PAVEMENT

S.L.M. 39+55

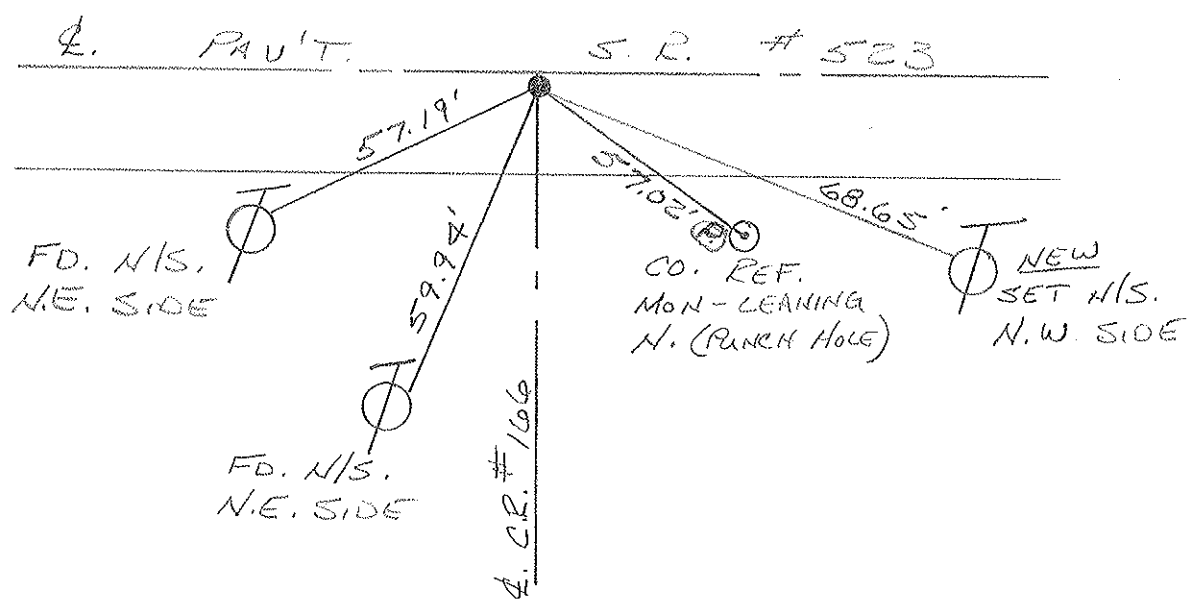
2	7
3	4



RECORDED: 10-17-1986

PK/WASHER 3"± DOWN
ATOP 1/2" RE-ROD 9"± DOWN
PER COUNTY REC.

SET PK/WASHER
 8-3-1993
 RCC



O.D.O.T. DISTRICT 2 SURVEY OFFICE

PERSONNEL

NOTES Cronin
 H.C. Pipke
 R.C. Geyman
Barbour

REFERENCE NO. 3

DRAWN 11/17/86
 DATE 10/17/86
 WEATHER sunny-windy
 TEMP. 50°

SHEET 3 OF 9

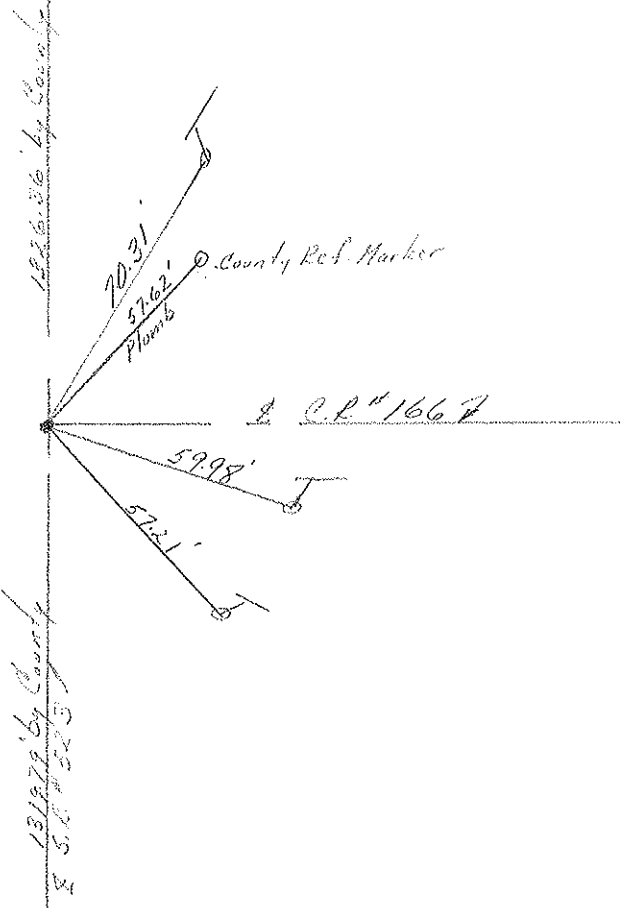
ROUTE #523
 COUNTY Sardis
 TOWNSHIP Rice
 SECTION 27 & 34
 T6 NR 15 E

TYPE MONUMENT P.K. washer
 ON SURFACE - BELOW 3" below surface
 LEFT - CL PAV'T. - RIGHT 15' R.L.S. Post.
 TO EDGE PAVEMENT
 S.L.M. 39+44.22

2	7
3	4



P.K. washer atop
1/2" x 3/8" Per rod 9" ± below
surface - Per County Rec.



PERSONNEL TITLE PERSONNEL TITLE

Cranin Schneider
Eipple Mosser
Cayman Barbour

COUNTY Sandusky

DATE 2/24/76

S. R. # 523

WEATHER cloudy

SEC. S.R. #19 to S.R. #53

TEMP. 47°

DESCRIPTION

Ties for Control Points

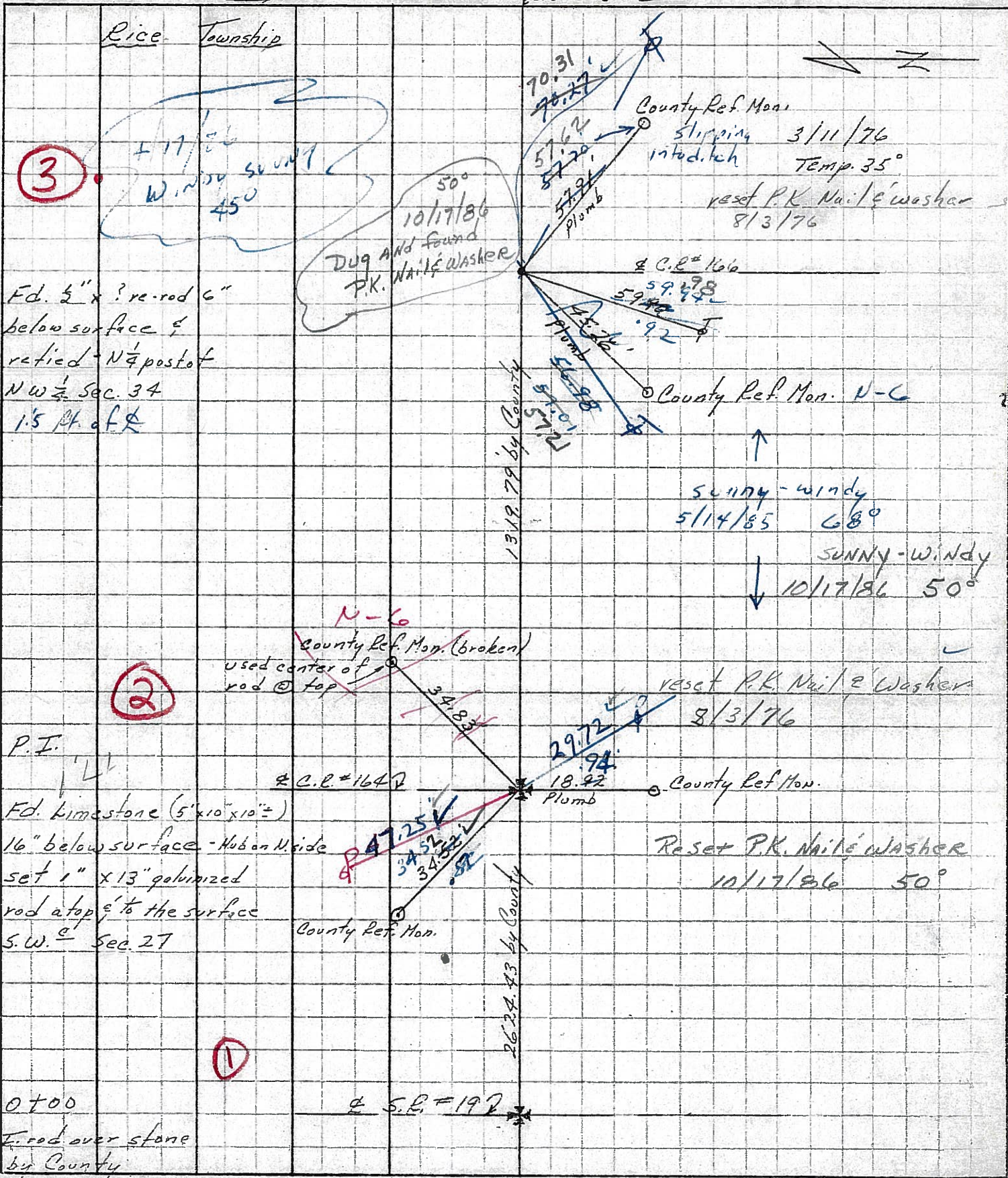
JOB NO.

LEFT

CENTER LINE

S.R. #523

RIGHT



Rice Township

3

Windy sunny
450
10/17/86

Dug and found
P.K. Nail & Washer
50°
10/17/86

Fd. 5" x ? re-rod 6"
below surface &
retied - N 1/4 post of
NW 1/4 Sec. 34
1.5 ft. of

1319.79 by County

County Ref. Mon.
slipping 3/11/76
intod. tech Temp. 35°
reset P.K. Nail & Washer
8/3/76

C.E. # 166

County Ref. Mon. N-C

SUNNY - WINDY
5/14/85 68°

SUNNY - WINDY
10/17/86 50°

2

N-C
County Ref. Mon. (broken)
used center of
rod @ top

reset P.K. Nail & Washer
8/3/76

P.I.
L
Fd. limestone (5' x 10' x 10')
16" below surface - Huban N. side
set 1" x 13" galvanized
rod at top & to the surface
S.W. 1/4 Sec. 27

C.E. # 164

County Ref. Mon.

Reset P.K. Nail & Washer
10/17/86 50°

County Ref. Mon.

2624.43 by County

1

OT00
E. rod over stone
by County

S.R. # 19

PERSONNEL	TITLE	PERSONNEL	TITLE
Cranin		Schneider	
Ripple		Mosser	
Geyman		Barbour	

COUNTY Sandusky

S. R. # 523

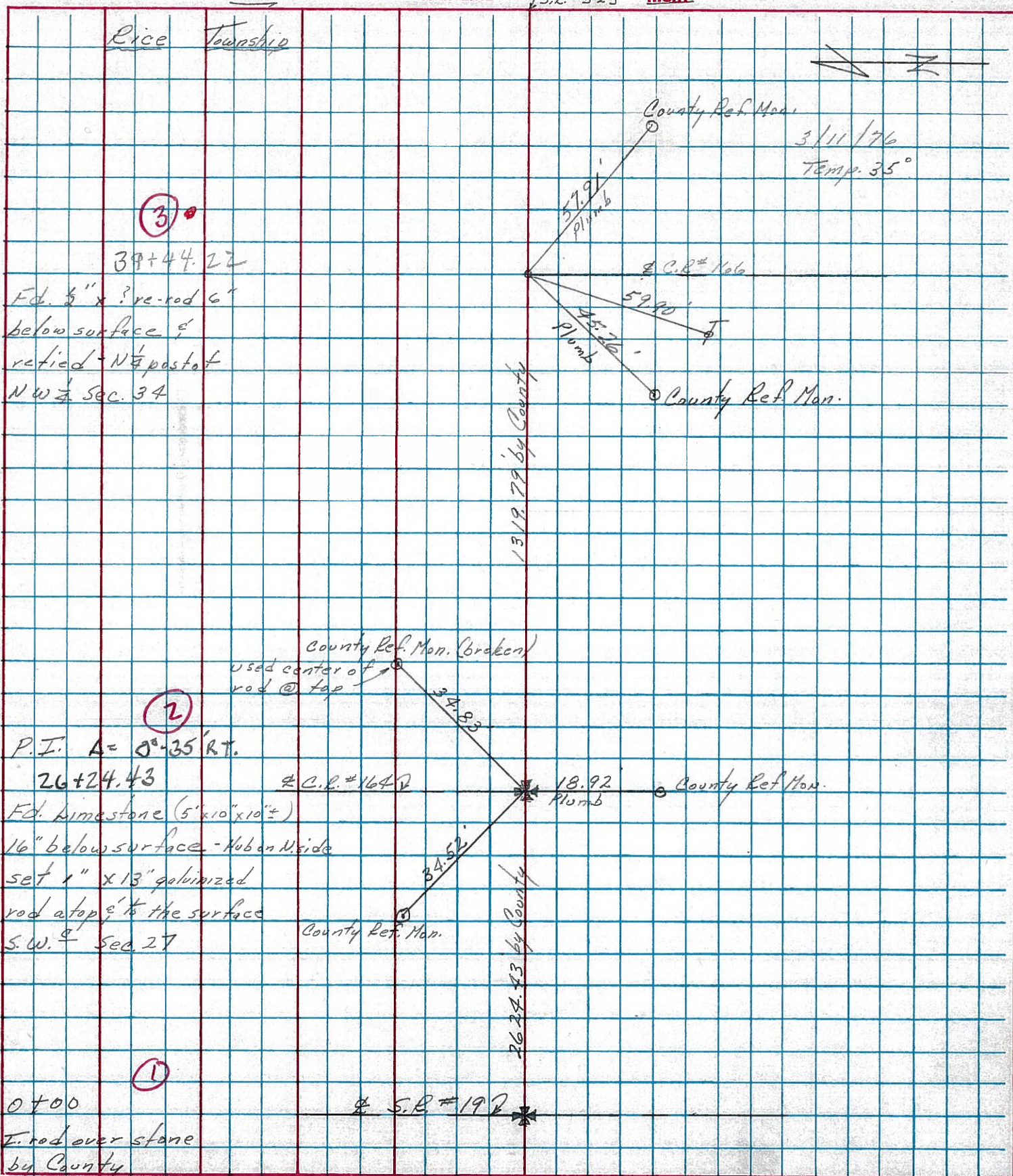
WEATHER cloudy

SEC. S.R. #19 to S.R. #53

TEMP. 47°

DESCRIPTION Ties for Control Points

JOB NO.



(3)

39+44.22

Fd. 5" x ? re-rod 6"
below surface &
retied - N 1/4 post of
NW 1/4 Sec. 34

(2)

P.I. A = 0°-35' RT.

26+24.43

Fd. limestone (5' x 10" x 10" ±)
16" below surface - Huban N. side
set 1" x 13" galvanized
rod atop & to the surface
S.W. 1/4 Sec. 27

(1)

0+00

I. rod over stone
by County

S.R. #19

S.R. #523

RIGHT

County Ref. Mon.

3/11/76

Temp. 35°

C.R. #166

County Ref. Mon.

County Ref. Mon. (broken)

used center of
rod @ top

C.R. #164

18.92

Plumb

County Ref. Mon.

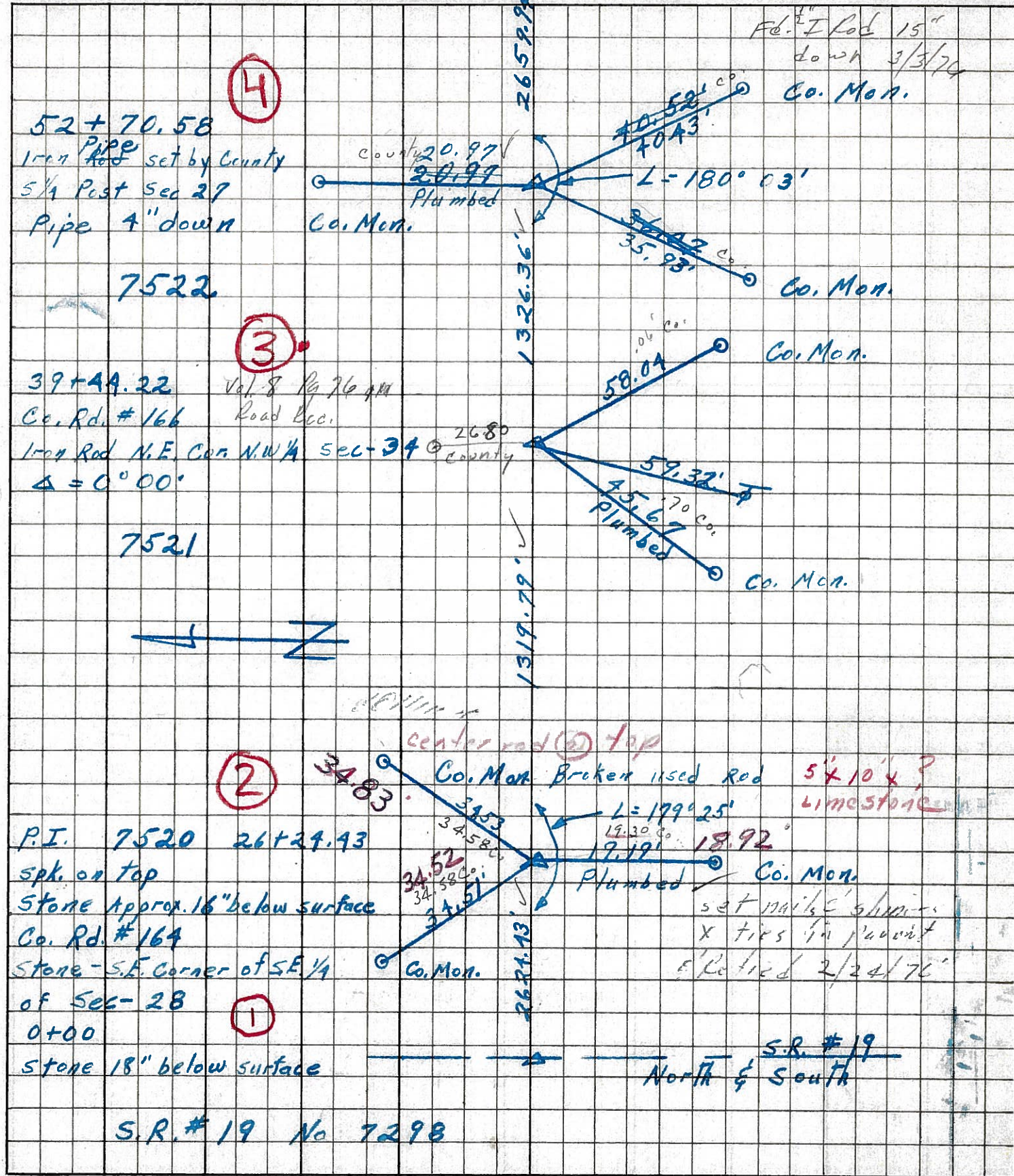
County Ref. Mon.

1319.79 by County

2624.43 by County

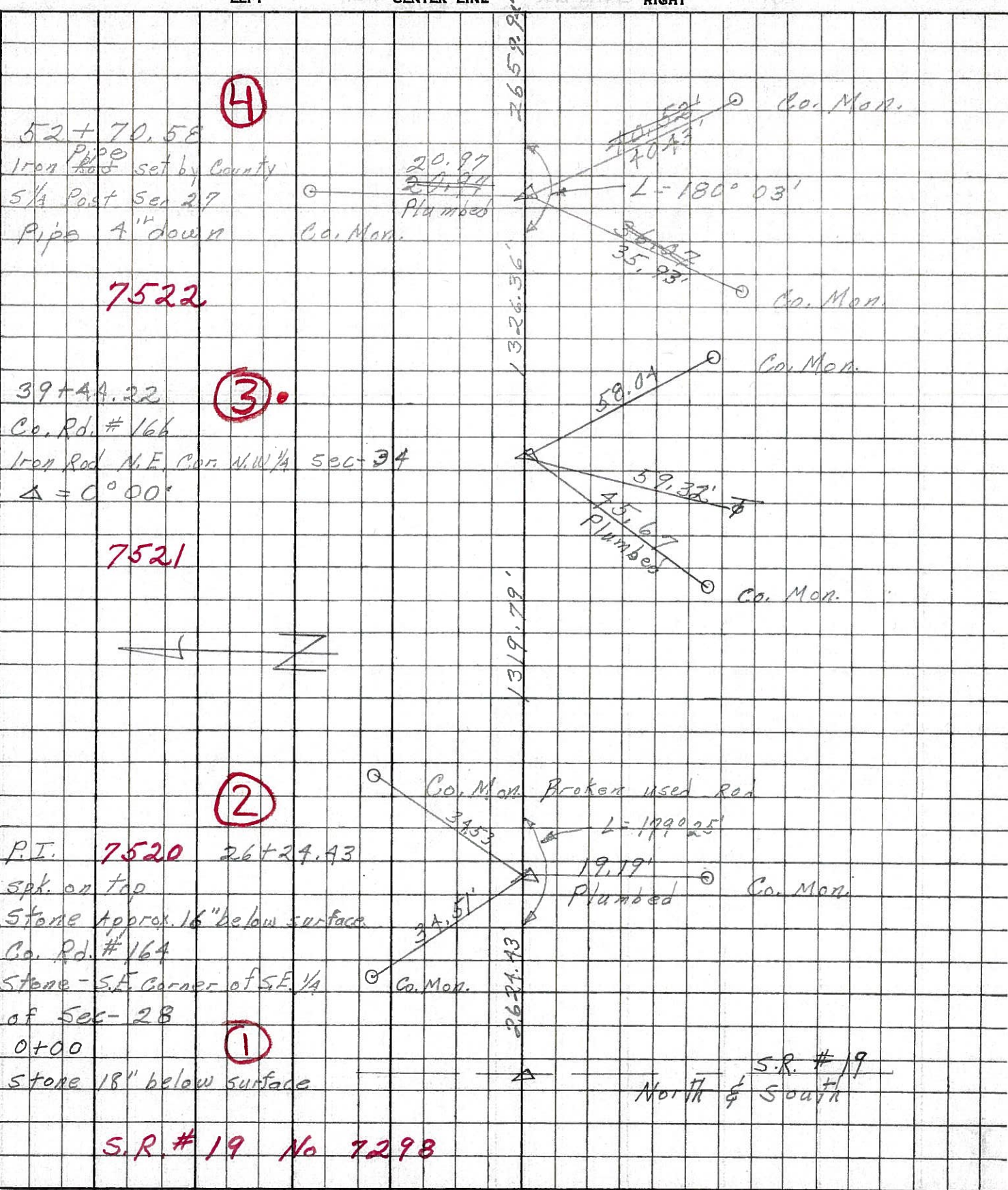
PERSONNEL TITLE PERSONNEL TITLE COUNTY Sandusky DATE 4-25-68
 Schneider Potts
 Barbour
 Seading
 S. R. 523 WEATHER Cloudy
 SEC. S.R.# 19 to S.R.# 53 TEMP. 30°

DESCRIPTION Ties for Control Points JOB NO.



PERSONNEL TITLE PERSONNEL TITLE COUNTY Sandusky DATE 4-25-68
 Schneider Potts
~~Messer~~
 Barbour
~~Radding~~ S. R. 523 WEATHER Cloudy
 SEC. S.R.# 19 to S.R.# 53 TEMP. 30°

DESCRIPTION Ties for Control Points LEFT CENTER LINE RIGHT JOB NO.



S.R. # 19 No 7298

PERSONNEL TITLE PERSONNEL TITLE

Sworden _____
 Bowers _____
 Jamison _____

COUNTY SANDUSKY DATE Nov. 19, 1963

S. R. # 523 WEATHER Clear

SEC. _____ TEMP + 50°

DESCRIPTION Control Points

LEFT

CENTER LINE

RIGHT

JOB NO. _____

