

O.D.O.T. DISTRICT 2 SURVEY OFFICE

PERSONNEL

REFERENCE NO. 2

SHEET OF

NOTES Cronin

H.C. Ripple

R.C. Barbour

Geyman

DATE 9/14/87

WEATHER sunny

TEMP. 65°

ROUTE # 635

COUNTY Sandusky

TOWNSHIP Jackson

SECTION 32

T 4 N R 14 E

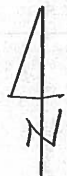
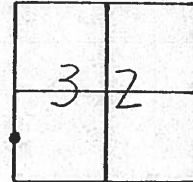
TYPE MONUMENT P.K. & washer

ON SURFACE - BELOW on surface

LEFT - ℄ PAV'T. - RIGHT 2 ± 1/4" & Pav't

TO EDGE PAVEMENT

S.L.M.



S. R. # 635

34.45 33" elm

39.32 36" elm

13+20.8
set P.K. & washer at top
mine spike

County SANDUSKY S.R. 635

Date 6-29-81

Township JACKSON

Weather clear

Section 32

Temp. +90°

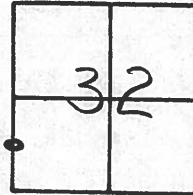
T4N, R14E

Personnel HOFFMAN

Householder

Loehrke

2

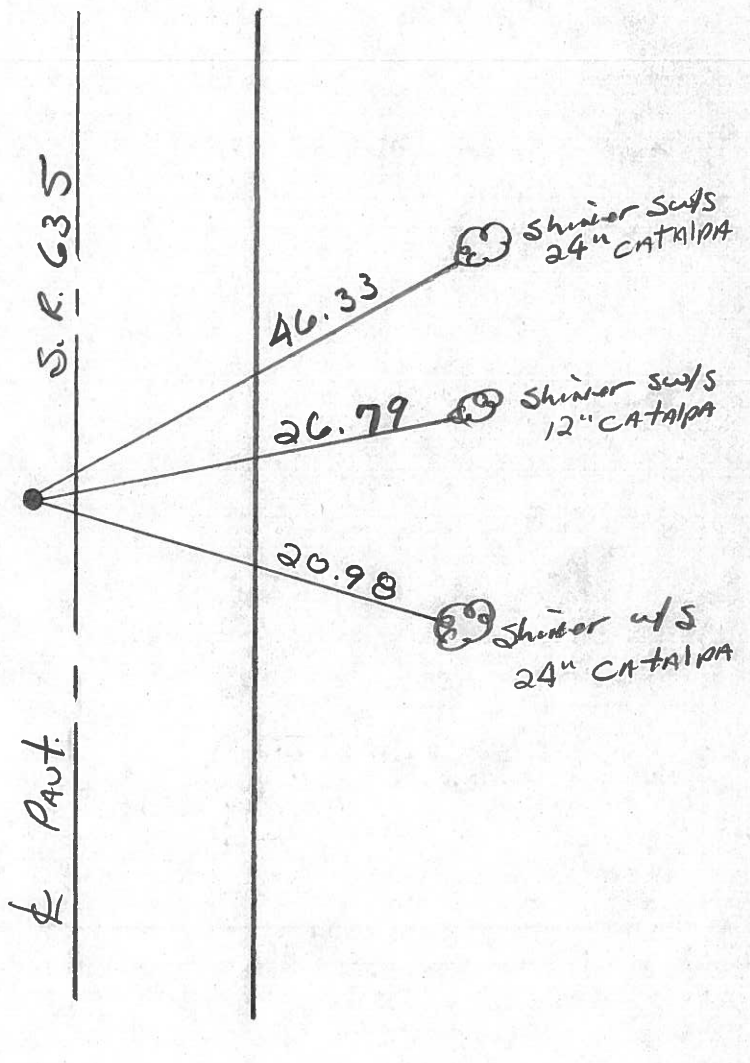


Fd. P.K. Nail/washer @ surface

1.5' w. of & PAUT

7.5' to W. EP.

11.3' to E. EP.



STA 13 + 20.8 ~ Rec.

PERSONNEL TITLE PERSONNEL TITLE

Ash
Cronin
Ripple
Anderson

COUNTY SANDUSKY

DATE July 1971

S. R. #635

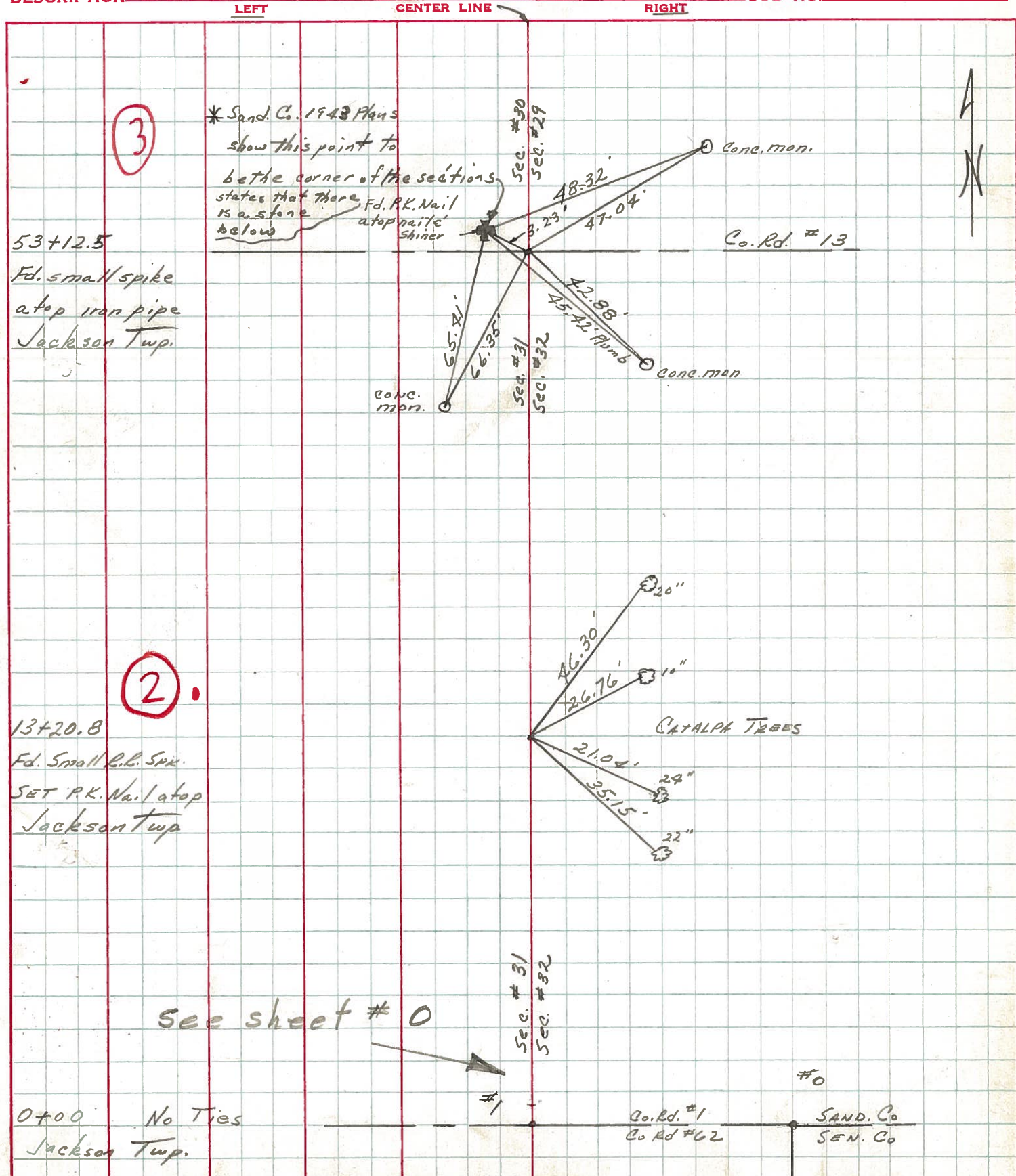
WEATHER

SEC. Sand. Co. Line to S.R. #6

TEMP.

DESCRIPTION TIES FOR CONTROL POINTS

JOB NO.



3

* Sand. Co. 1943 Plans
show this point to
be the corner of the sections
states that there
is a stone
below

53+12.5

Fd. small spike
atop iron pipe
Jackson Twp.

Co. Rd. #13

2

13+20.8

Fd. Small R.L. Spike
SET P.K. Nail atop
Jackson Twp.

CATALPA TREES

see sheet # 0

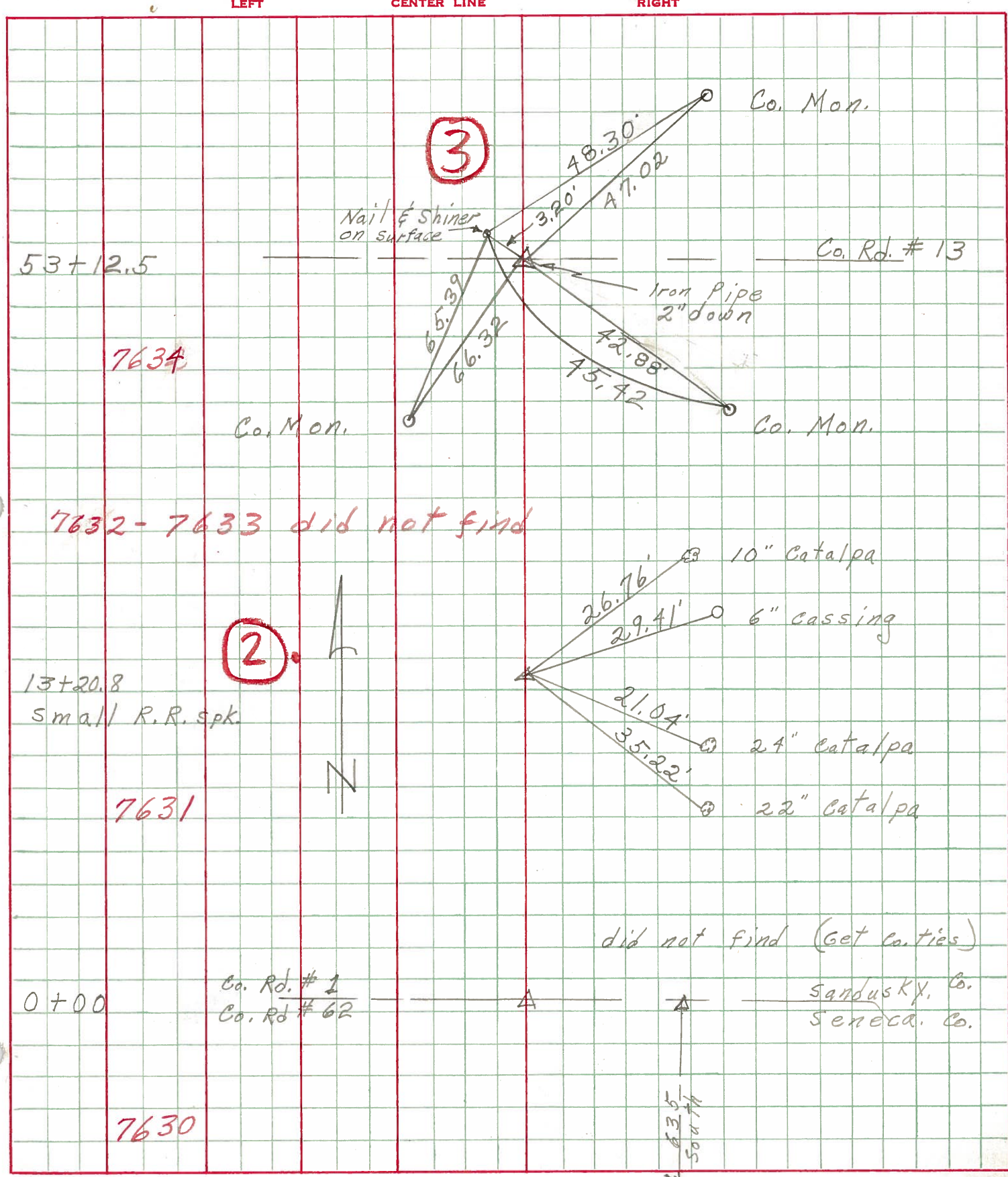
0+00 No Ties
Jackson Twp.

Co. Rd. #1
Co. Rd. #62

#0
SAND. Co
SEN. Co

PERSONNEL	TITLE	PERSONNEL	TITLE	COUNTY	DATE
Schneider				Sandusky	5-7-68
Mosser				S. R. 635	WEATHER Fair-windy
Barbour				SEC. Seneca Co. Line North	TEMP. 45°
Potts					

DESCRIPTION Ties for Control Points JOB NO. _____



TRANSIT
S.H. ROUTE
COUNTY, KANSAS
MILLERSVILLE
POINTS
635 SANDUSKY
STATION
ROAD

(6) 106+28.8

CORNER STONE
 $\Delta = 0^\circ - 28 - 30''$ RT

(3) 53+12.5

IRON PIPE
 $\Delta = 0^\circ - 12' 72''$

(2) 13+20.8

IRON PIN
 $\Delta = 0^\circ - 56' 72''$

(1A) 0+16.4

AT CORNER LINE
SANDUSKY
SENECA
IRON PIN
CORNER
CORNER
 $\Delta = 89^\circ - 57'$

S E

106+28.8	CORNER STONE	WITNESSES, ROAD & W	40'
53+12.5	IRON PIPE BY FENCE	S. E.	42.15'
	FENCE POST NAIL & SHINER	S. W. 34.4'	
13+20.8	IRON PIPE WITNESSES	NAILS & SHINERS	33.3'
	ELM TREE S. W.		
	TRIPLES N. W.		
0+16.4	IRON PIPE WITNESSES	NAILS & SHINERS	38.5'
	TRIPLES SOUTH		44.15'
	FENCE POST S. W.		41.75'
	FENCE POST S. E.		