

O.D.O.T. DISTRICT 2 SURVEY OFFICE (USE ONLY)

PERSONNEL

REFERENCE NO. 8

SHEET 13 OF 56

NOTES RHOADES
 H.C. AUBLE
 R.C. ASTON
NIESE

DATE 10/31/23
 WEATHER CLOUDY
 TEMP. 40°

ROUTE SR 4
 COUNTY SENECA
 TOWNSHIP VENICE
 SECTION 15

DWG BY RHOADES PID 101241

T 1 N R 17 E

TYPE MONUMENT MAG/WASHER

ON SURFACE - ~~BELOW~~ ON

OFFSET CL PAVEMENT ON LT : RT

9.5' TO LT EDGE PAVEMENT

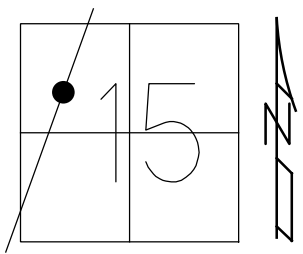
STATION: 205+28.84

HORZ.DATUM: NAD83(2011)

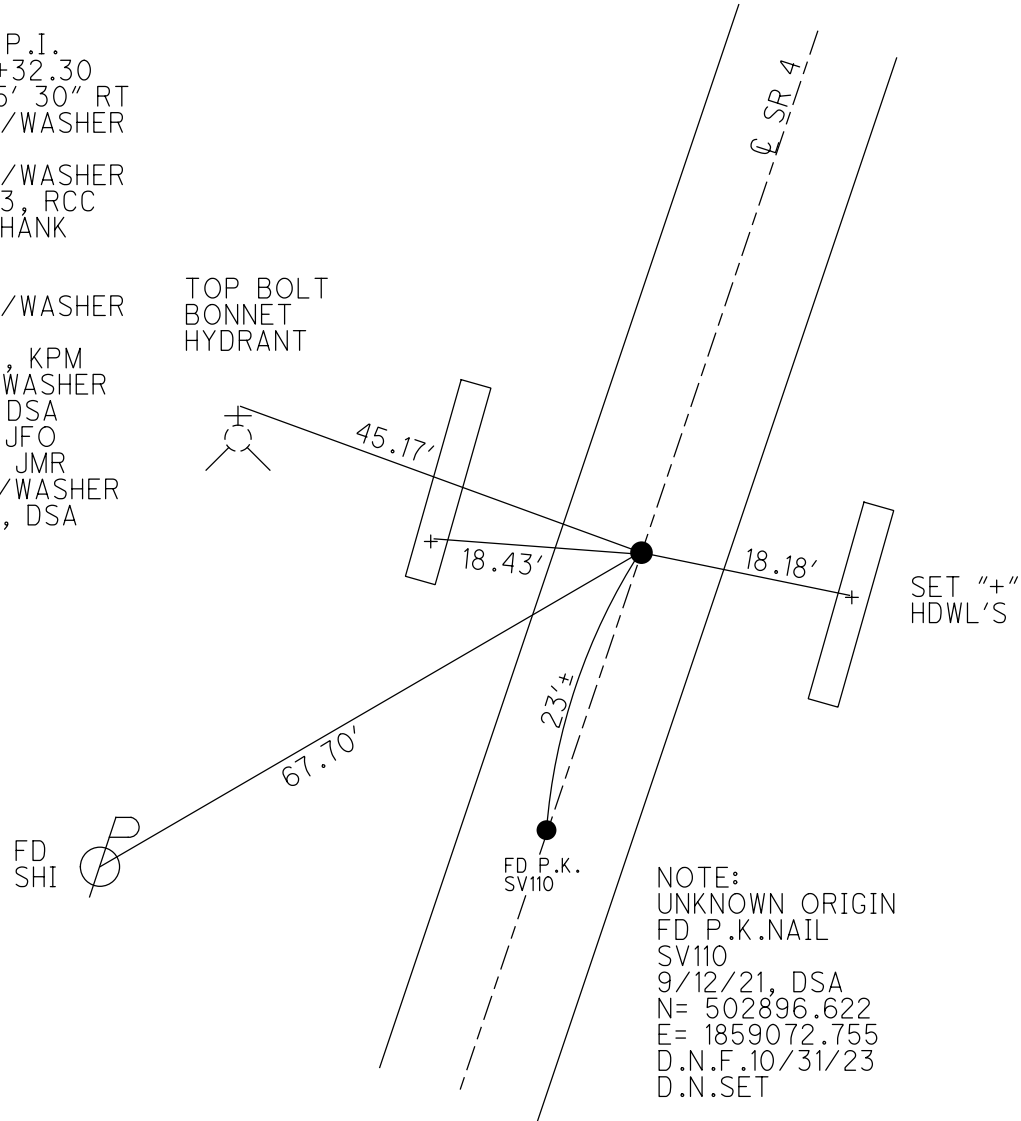
GEOID: NAVD88 2018

GRID: NORTHING: 502919.586

EASTING: 1859081.621



RECORD: P.I.
 STA. 205+32.30
 $\Delta = 0^\circ 15' 30''$ RT
 SET P.K./WASHER
 11/12/74
 SET P.K./WASHER
 10/6/1993, RCC
 FD P.K.SHANK
 SV111
 9/15/09
 SET P.K./WASHER
 FIN 111
 10/20/10, KPM
 FD P.K./WASHER
 9/12/21, DSA
 2/8/22, JFO
 7/13/23, JMR
 SET MAG/WASHER
 10/31/23, DSA

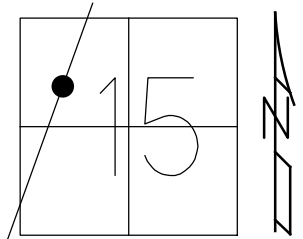


NOTE:
 UNKNOWN ORIGIN
 FD P.K.NAIL
 SV110
 9/12/21, DSA
 N= 502896.622
 E= 1859072.755
 D.N.F.10/31/23
 D.N.SET

O.D.O.T. DISTRICT 2 SURVEY OFFICE (USE ONLY)

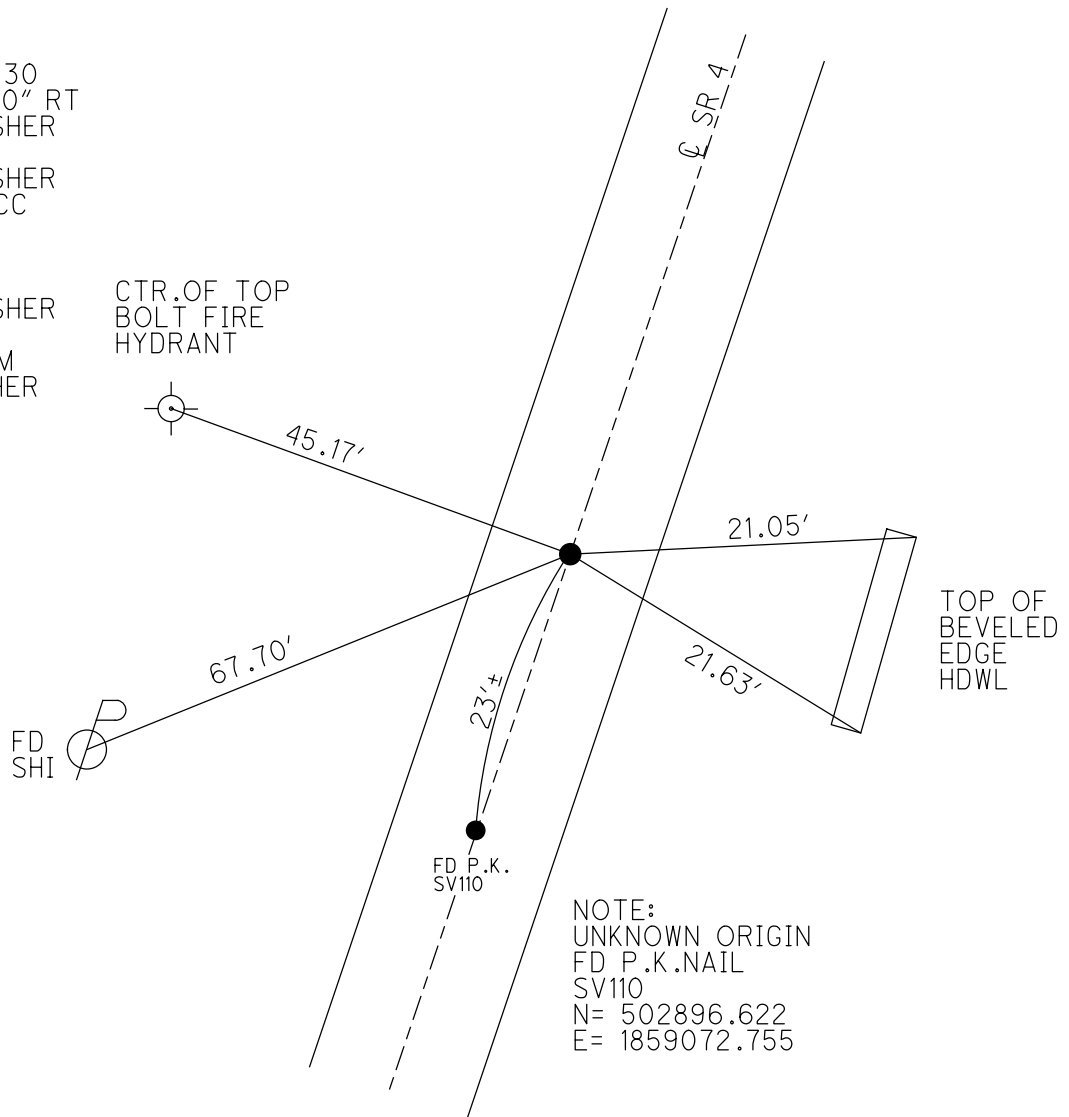
PERSONNEL _____ REFERENCE NO. 8 SHEET 13 OF 41
 NOTES NIESE DATE 9/15/21 ROUTE SR 4
 H.C. AUBLE WEATHER OVERCAST COUNTY SENECA
 R.C. NIESE TEMP. 66° TOWNSHIP VENICE
 DWG BY RHOADES PID PVTRAIN SECTION 15
 T 1 N R 17 E

TYPE MONUMENT P.K./WASHER
 ON SURFACE - ~~BELOW~~ ON
 OFFSET Q PAVEMENT ON LT : RT
9.5' TO LT EDGE PAVEMENT
 STATION: 205+28.84



HORIZ.DATUM: NAD83(2011) GEOID: NAVD88 2012A
 GRID: NORTHING: 502919.630 EASTING: 1859081.539

RECORD: P.I.
 STA. 205+32.30
 $\Delta = 00^\circ 15' 30''$ RT
 SET P.K./WASHER
 11/12/74
 SET P.K./WASHER
 10/6/1993, RCC
 FD P.K.SHANK
 SV111
 9/15/09
 SET P.K./WASHER
 FIN 111
 10/20/10, KPM
 FD P.K./WASHER
 9/12/21, DSA
 2/8/22, JFO

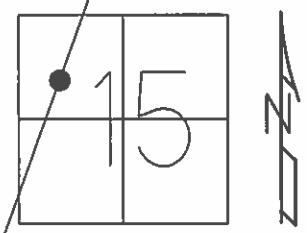


NOTE:
 UNKNOWN ORIGIN
 FD P.K.NAIL
 SV110
 N= 502896.622
 E= 1859072.755

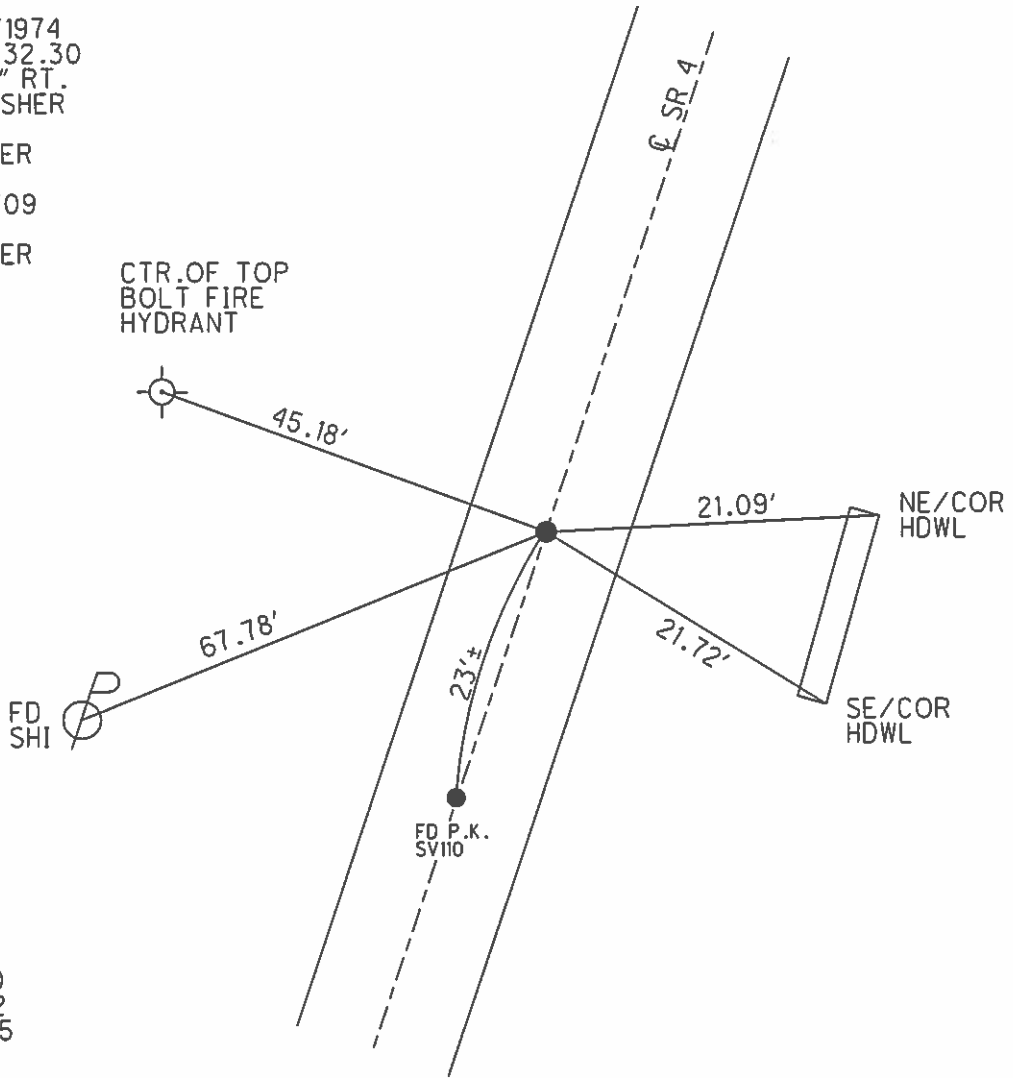
O.D.O.T. DISTRICT 2 SURVEY OFFICE (USE ONLY)

PERSONNEL	REFERENCE NO.	<u>8</u>	SHEET	<u>13</u>	OF	<u>41</u>
NOTES	FINTEL	DATE	<u>8/11/10</u>	ROUTE	<u>SR 4</u>	
H.C.	<u>HARBAUGH</u>	WEATHER	<u>FAIR</u>	COUNTY	<u>SENECA</u>	
R.C.	<u>FINTEL</u>	TEMP.	<u>87°</u>	TOWNSHIP	<u>VENICE</u>	
				SECTION	<u>15</u>	
				T. <u>1</u> N. R. <u>17</u> E.		

TYPE MONUMENT P.K.SHANK
 ON SURFACE - ~~BELOW~~ ON
 LEFT - Q PAV'T - RIGHT ON
9.5' TO LT EDGE PAVEMENT
 S.L.M. 205+28.84
 GRID: NORTHING: 502919.630 EASTING: 1859081.539



RECORD: 12/13/1974
 P.I. STA. 205+32.30
 $\Delta = 00^\circ 15' 30''$ RT.
 RESET P.K./WASHER
 11/12/74
 SET P.K./WASHER
 10/6/1993 RCC
 FD SHANK 9/3/09
 SV111 9/15/09
 SET P.K./WASHER
 GPS FIN 111
 10/20/10 KPM



NOTE:
 P.K.NAIL-SV110
 N= 502896.622
 E= 1859072.755

O.D.O.T. DISTRICT 2 SURVEY OFFICE

PERSONNEL

REFERENCE NO. 8

SHEET 12 OF 50

NOTES CHENEY

H.C. RIPPLE

R.C. BARBOUR

GEYMAN

DATE 7-26-1993

WEATHER FAIR

TEMP. 85°

ROUTE SR#4

COUNTY SENECA

TOWNSHIP VENICE

SECTION 15

T1 N R 17 E

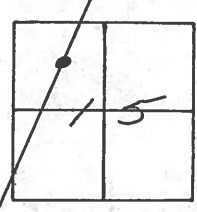
TYPE MONUMENT PK/WASHER

ON SURFACE - ~~BELOW~~ ON

~~LEFT - & PAV'T.~~ - RIGHT ON

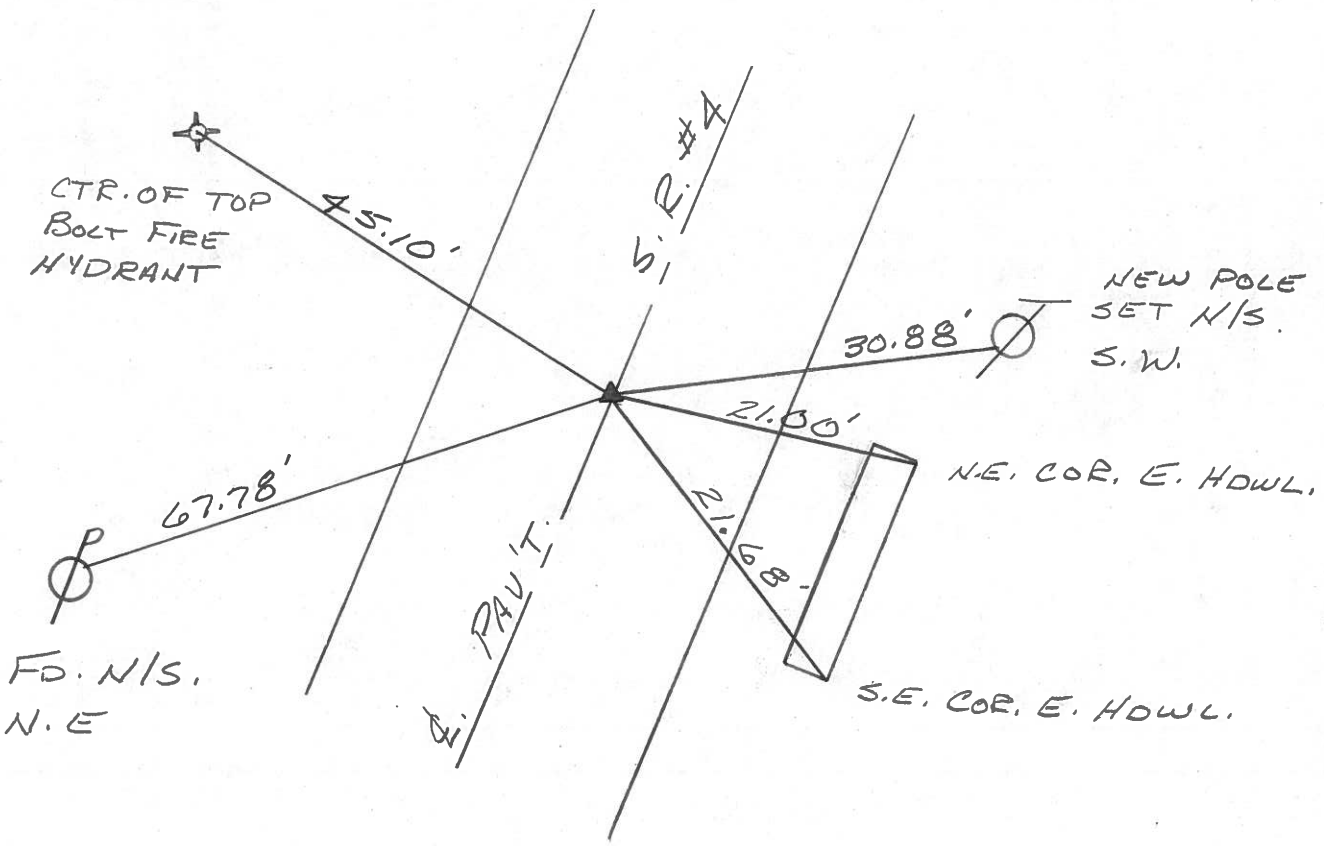
10' TO RT. EDGE PAVEMENT

S.L.M. 205+79



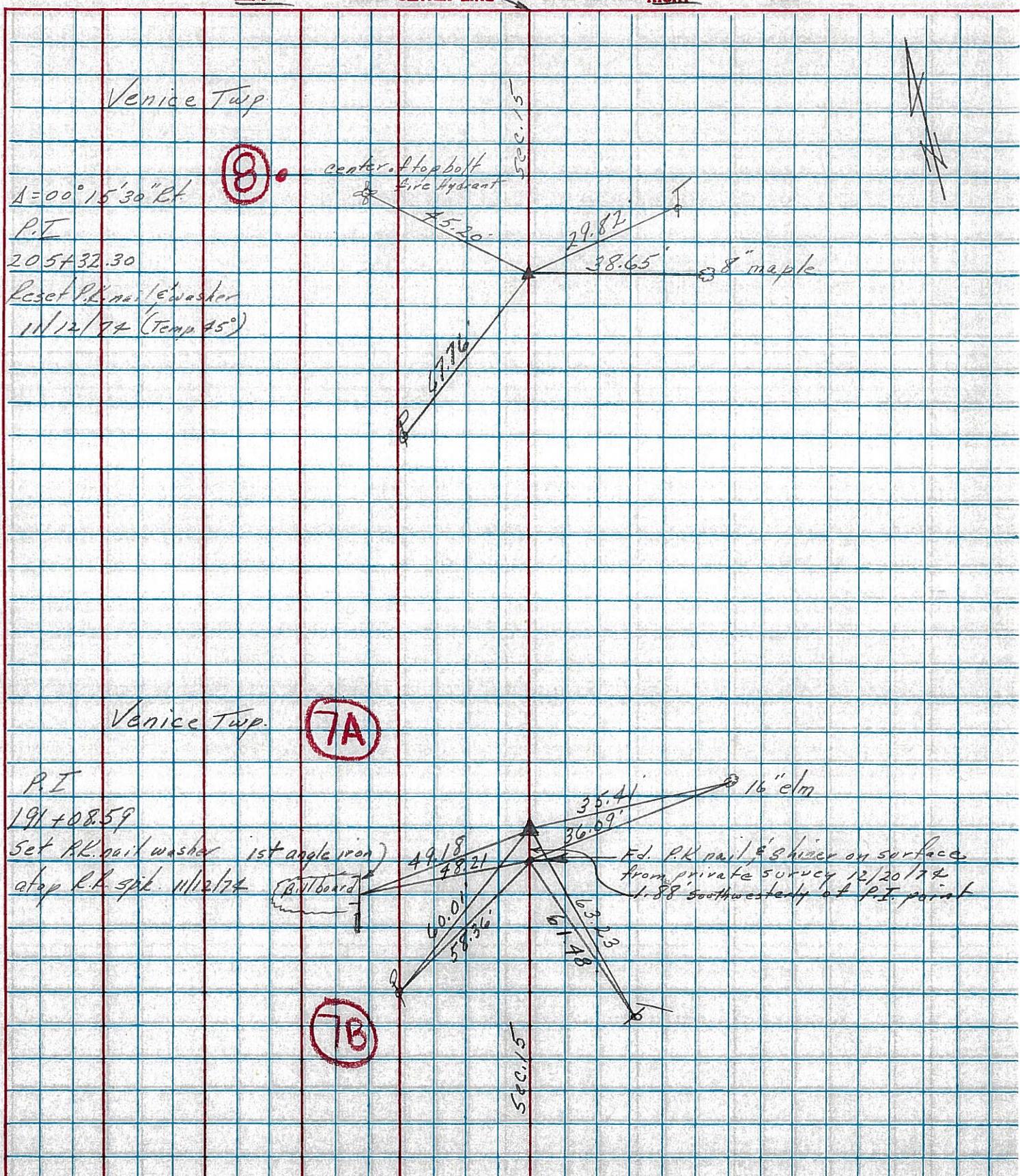
RECORD: 12-13-1974
 P.I. STA. 205+32.30
 $\Delta = 00^{\circ} 15' 30''$ Rt.
 RESET PK/WASHER
11-12-1974

SET PK/WASHER
10-6-1993
 RCC



PERSONNEL	TITLE	PERSONNEL	TITLE	COUNTY	DATE
<u>Cronin</u>		<u>Schneider</u>		<u>Seneca</u>	<u>12/13/74</u>
<u>Ash</u>		<u>Mosser</u>		S. R. # <u>4</u>	WEATHER <u>overcast-rain</u>
<u>Ripple</u>		<u>Ripple</u>		SEC. <u>Crawford Co. Line-North</u>	TEMP <u>34°</u>
<u>Geyman</u>					

DESCRIPTION Ties for Control Points JOB NO. _____



PERSONNEL TITLE PERSONNEL TITLE

Schneider Potts

COUNTY Seneca DATE 9-27-68

Mosser

S. R. 4 WEATHER Fair

Barbour

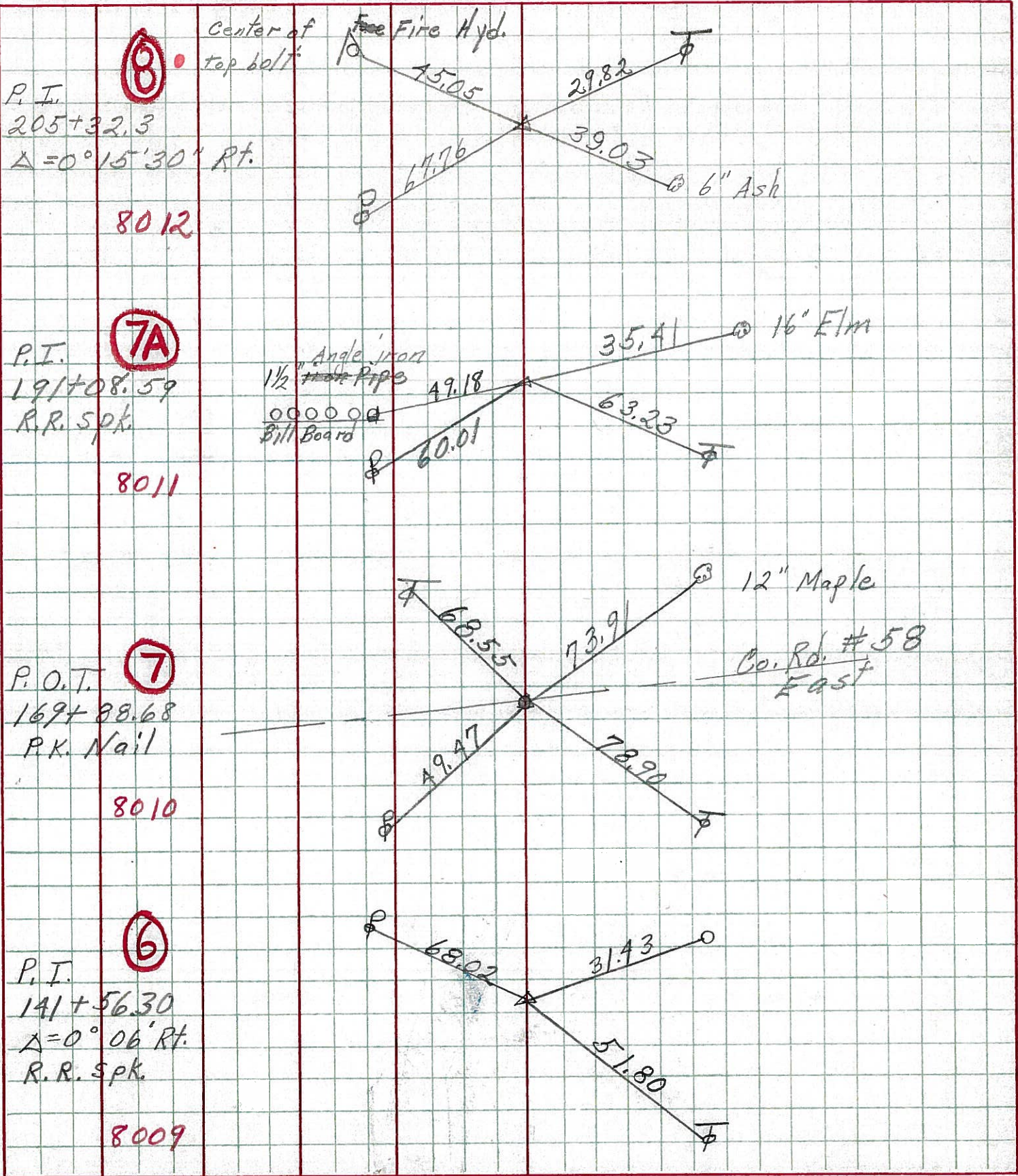
SEC Crawford Co. Line-North TEMP. 70°

Redding

DESCRIPTION Ties for Control Points

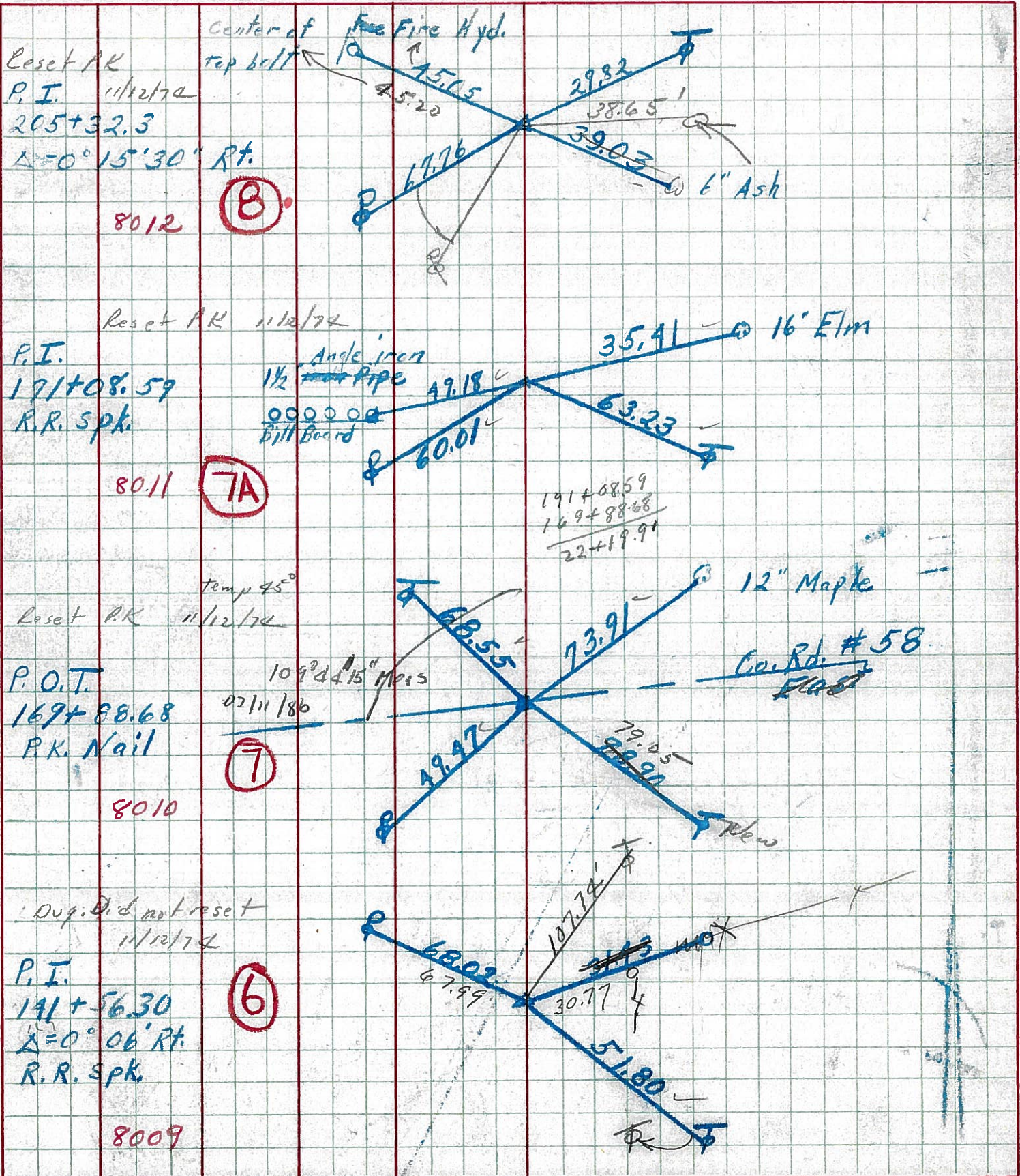
LEFT CENTER LINE RIGHT

JOB NO.



PERSONNEL TITLE PERSONNEL TITLE COUNTY Seneca DATE 9-27-68
 Mosser _____ S. R. 4 WEATHER Fair
 Barbour _____ SEC. Crawford Co. Line North TEMP. 70°
 Redding _____

DESCRIPTION Ties for Control Points LEFT CENTER LINE RIGHT JOB NO.



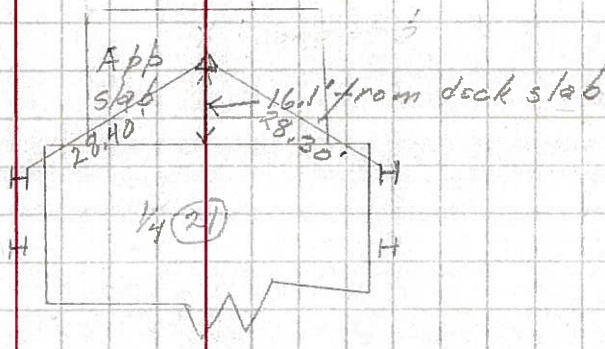
PERSONNEL	TITLE	PERSONNEL	TITLE	COUNTY	DATE	WEATHER	TEMP.
KrABILL				Seneca			
Kowaleski				S. R. H			
Brooks							

DESCRIPTION	LEFT	CENTER LINE	RIGHT	JOB NO.
-------------	------	-------------	-------	---------

127+01.32
 P.I. $\Delta = 0^{\circ}16'00''$ RT
 X in conc. app slab

5A

8

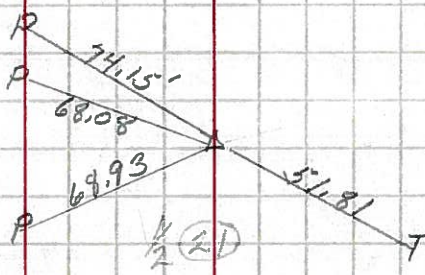


1-16-64

141+56.30
 P.I. $\Delta = 0^{\circ}06'00''$ RT
 P.K. nail

6

9

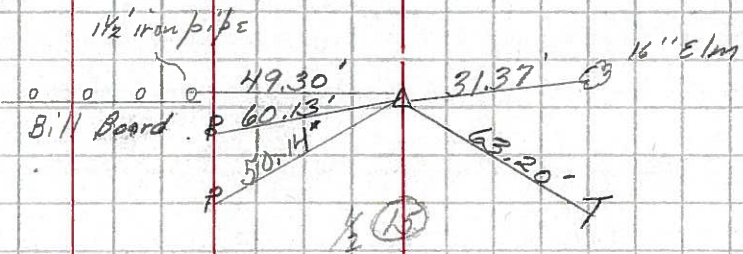


1-16-64

191+08.84
 P.I. $\Delta = 0^{\circ}03'00''$ RT
 P.K. nail

7A

10



1-16-64

205+32.9
 P.I. $\Delta = 0^{\circ}15'30''$ RT
 P.K. nail

8

11

