

O.D.O.T. DISTRICT 2 SURVEY OFFICE (USE ONLY)

PERSONNEL

REFERENCE NO. 9

SHEET 15 OF 56

NOTES RHOADES
 H.C. AUBLE
 R.C. MILLER

DATE 11/1/23
 WEATHER SUNNY
 TEMP. 36°

ROUTE SR 4
 COUNTY SENECA
 TOWNSHIP VENICE
 SECTION 15
 T 1 N R 17 E

DWG BY RHOADES PID 101241

TYPE MONUMENT MAG/WASHER

ON SURFACE - ~~BELOW~~ ON

OFFSET CL PAVEMENT 4" ~~RT~~ : RT

9.7' TO RT EDGE PAVEMENT

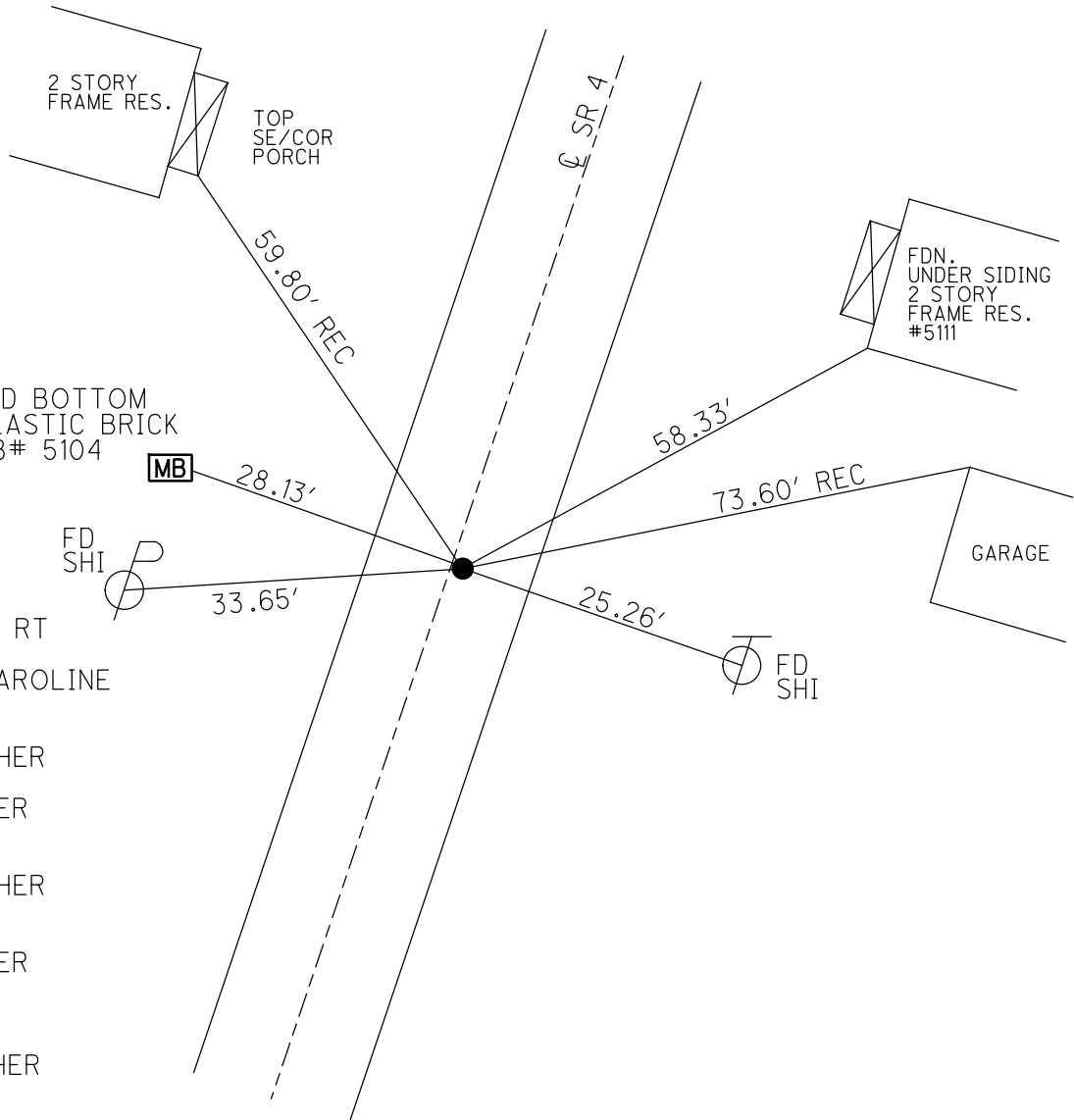
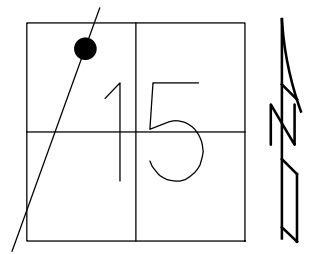
STATION: 220+45.22

HORZ.DATUM: NAD83(2011)

GEOID: NAVD88 2018

GRID: NORTHING: 504326.152

EASTING: 1859647.745

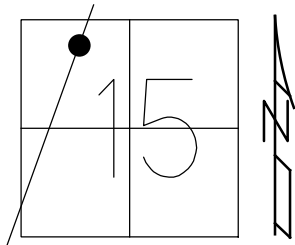


RECORD: P.I.
 STA. 220+50
 $\Delta = 0^\circ 32' 18''$ RT
 12/17/74
 VILLAGE OF CAROLINE
 CORP. LINE
 SET P.K./SHI
 SET P.K./WASHER
 10/6/199, RCC
 FD P.K./WASHER
 SV113
 9/15/09
 SET P.K./WASHER
 FIN 113
 10/20/10 KPM
 FD P.K./WASHER
 9/15/21, DSA
 2/8/22, JFO
 7/14/23, DSA
 SET MAG/WASHER
 11/1/23, DSA

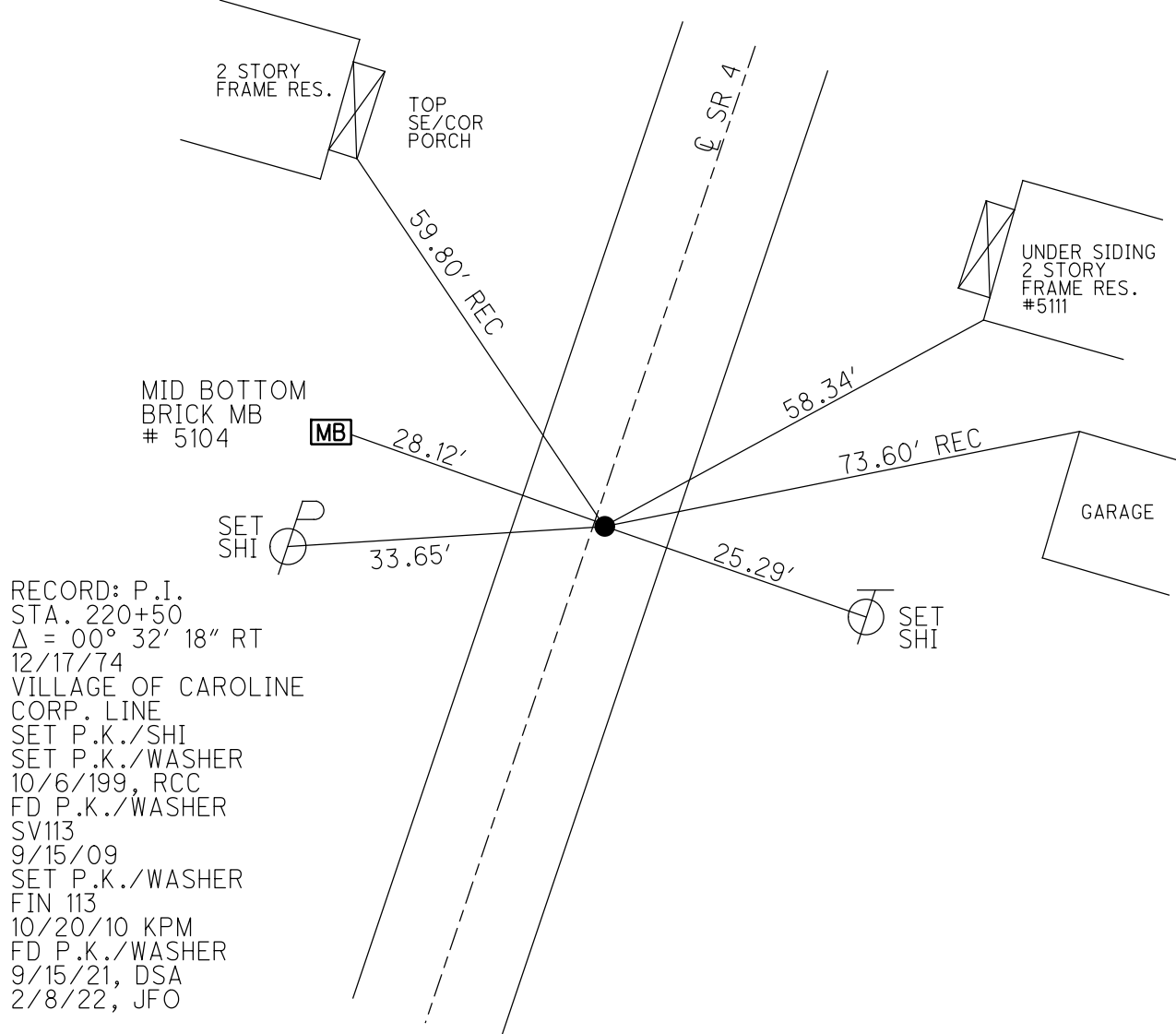
O.D.O.T. DISTRICT 2 SURVEY OFFICE (USE ONLY)

PERSONNEL _____ REFERENCE NO. 9 SHEET 15 OF 41
 NOTES NIESE DATE 9/15/21 ROUTE SR 4
 H.C. AUBLE WEATHER OVERCAST COUNTY SENECA
 R.C. NIESE TEMP. 66° TOWNSHIP VENICE
 DWG BY RHOADES PID PVTRAIN SECTION 15
 T 1 N R 17 E

TYPE MONUMENT P.K./WASHER
 ON SURFACE - ~~BELOW~~ ON _____
 OFFSET Q PAVEMENT 4" ~~LT~~ : RT
9.7' TO RT EDGE PAVEMENT
 STATION: 220+45.22



HORZ.DATUM: NAD83(2011) GEOID: NAVD88 2012A
 GRID: NORTHING: 504326.211 EASTING: 1859647.698

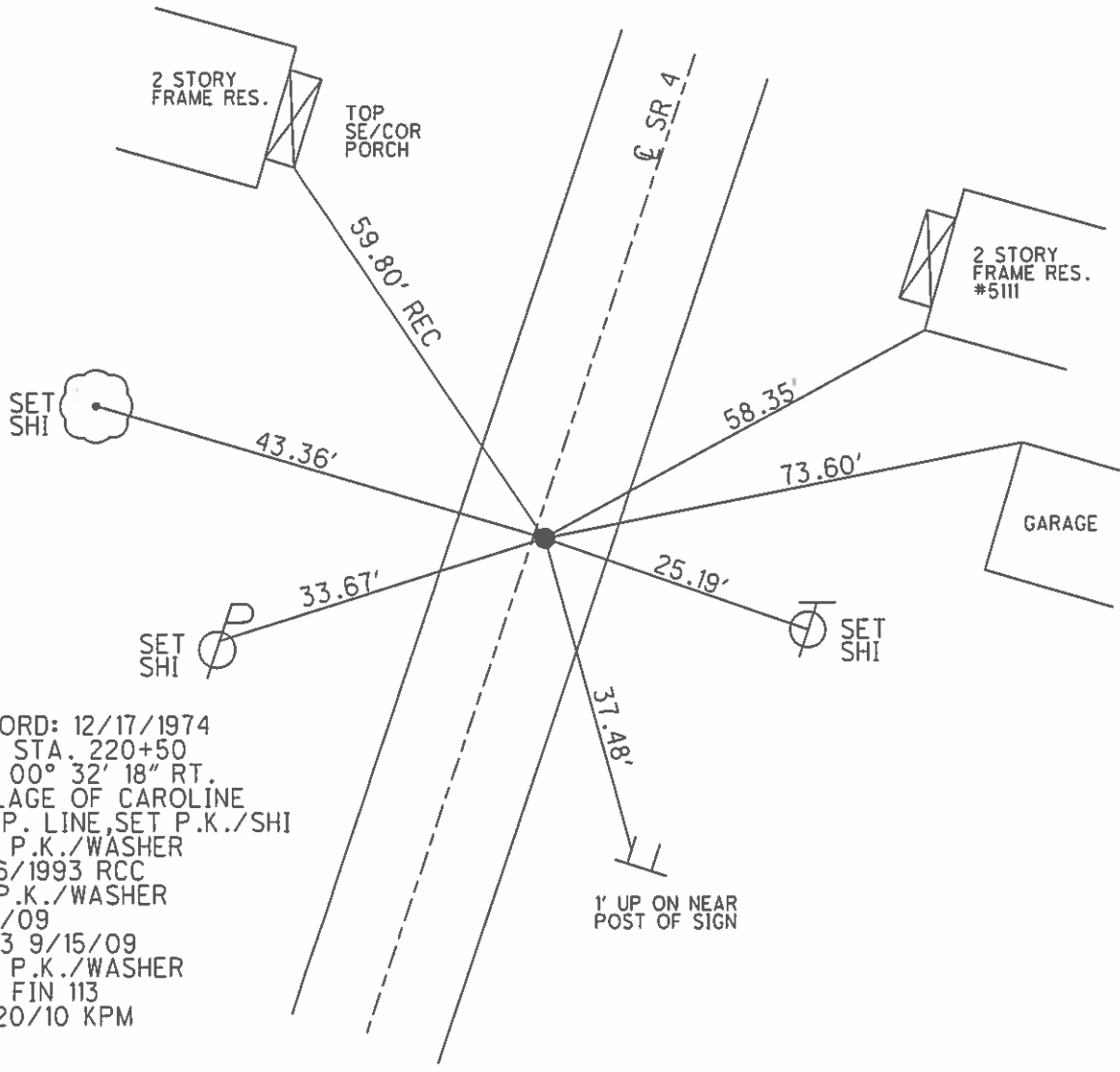
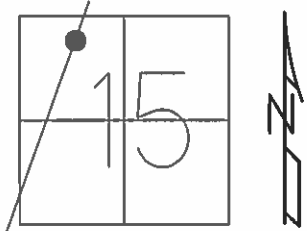


RECORD: P.I.
 STA. 220+50
 $\Delta = 00^\circ 32' 18''$ RT
 12/17/74
 VILLAGE OF CAROLINE
 CORP. LINE
 SET P.K./SHI
 SET P.K./WASHER
 10/6/199, RCC
 FD P.K./WASHER
 SV113
 9/15/09
 SET P.K./WASHER
 FIN 113
 10/20/10 KPM
 FD P.K./WASHER
 9/15/21, DSA
 2/8/22, JFO

O.D.O.T. DISTRICT 2 SURVEY OFFICE (USE ONLY)

PERSONNEL _____ REFERENCE NO. 9 SHEET 15 OF 41
 NOTES FINTEL DATE 8/11/10 ROUTE SR 4
 H.C. HARBAUGH WEATHER FAIR COUNTY SENECA
 R.C. FINTEL TEMP. 90° TOWNSHIP VENICE
 _____ SECTION 15
 _____ T 1 N R 17 E

TYPE MONUMENT _____ P.K./WASHER
 ON SURFACE - ~~BELOW~~ _____ ON _____
~~LEFT~~ - Q PAV'T - RIGHT 4"
9.7' TO RT EDGE PAVEMENT
 S.L.M. 220+45.22
 GRID: NORTHING: 504326.211 EASTING: 1859647.698



RECORD: 12/17/1974
 P.I. STA. 220+50
 $\Delta = 00^\circ 32' 18''$ RT.
 VILLAGE OF CAROLINE
 CORP. LINE, SET P.K./SHI
 SET P.K./WASHER
 10/6/1993 RCC
 FD P.K./WASHER
 9/3/09
 SV113 9/15/09
 SET P.K./WASHER
 GPS FIN 113
 10/20/10 KPM

O.D.O.T. DISTRICT 2 SURVEY OFFICE

PERSONNEL _____

REFERENCE NO. 9

SHEET 14 OF 50

NOTES CHENEY

H.C. RIPPLE

R.C. BARBOUR

GEYMAN

DATE 7-26-1993

WEATHER FAIR

TEMP. 90°

ROUTE S.R. #4

COUNTY SENECA

TOWNSHIP VENICE

SECTION 15

T1 N R 17 E

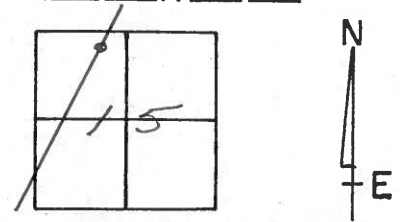
TYPE MONUMENT PK/WASHER

ON SURFACE - ~~BELOW~~ ON

~~LEFT~~ - C PAV'T. - RIGHT 1'

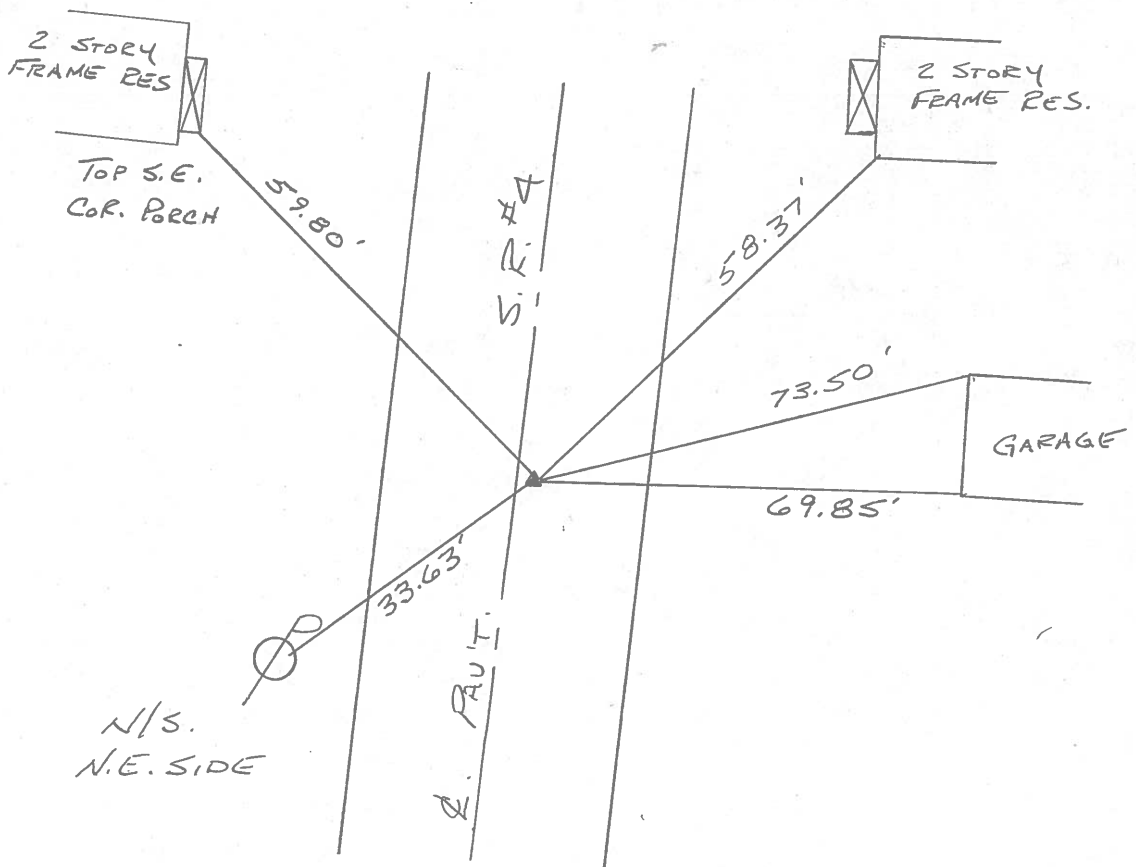
9.5' TO RT. EDGE PAVEMENT

S.L.M. 220+98



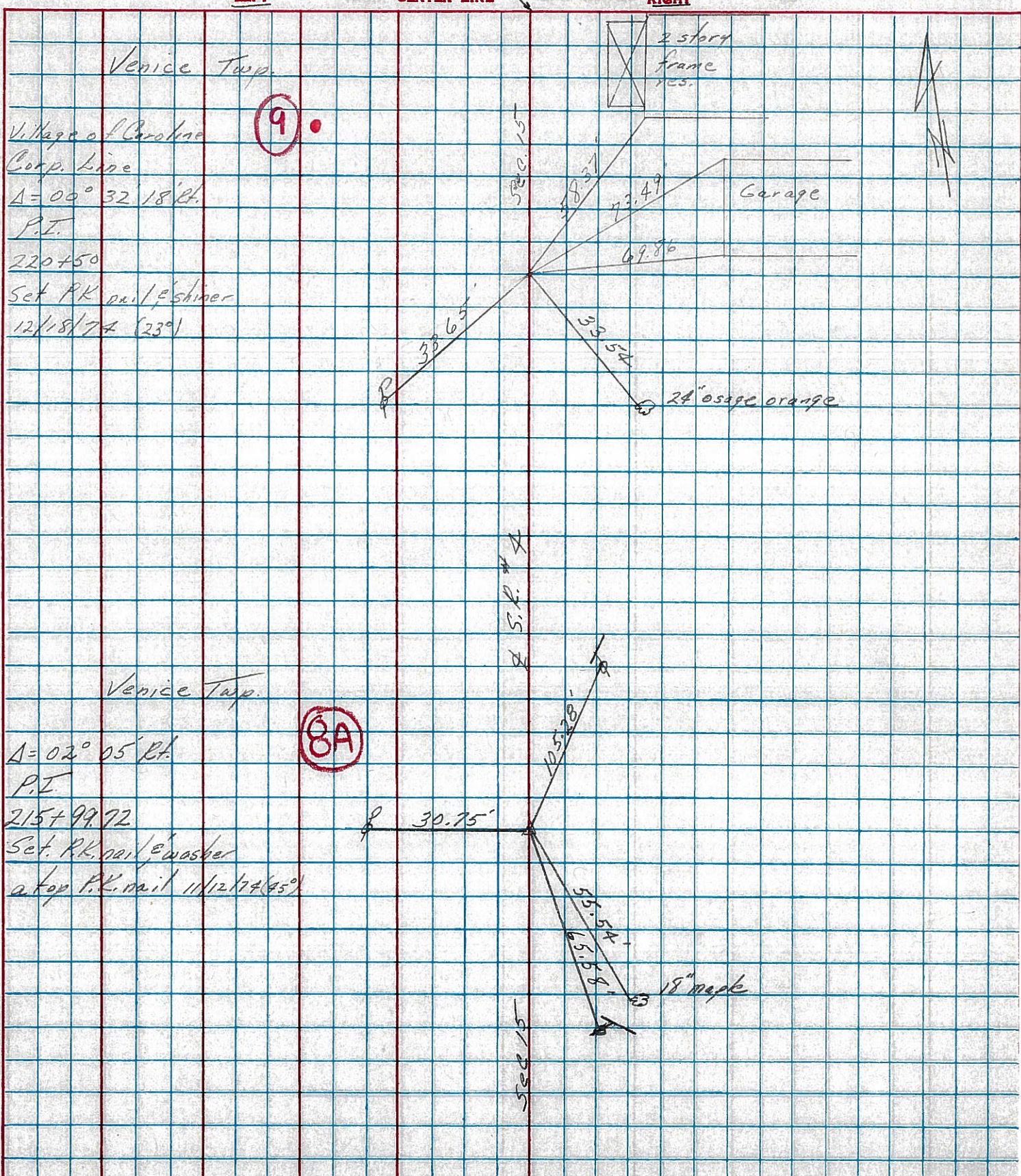
RECORD: 12-17-1974
 P.I. STA. 220+50
 $\Delta = 00^{\circ} 32' 18''$ RT.
 VILLAGE OF CAROLINE
 CORP. LINE
 SET PK/SHINER

SET PK/WASHER
 10-6-1993
 RCO



PERSONNEL	TITLE	PERSONNEL	TITLE	COUNTY	DATE	WEATHER	TEMP.
Cronin		Schneider		Seneca	12/17/74	overcast-snow	32°
Ash		Mosser		S. R. #4			
Ripple		Barbour		SEC Crawford Co. Line-North			
Geyman							

DESCRIPTION Ties for Control Points JOB NO. _____



PERSONNEL TITLE PERSONNEL TITLE

Schneider _____ Potts _____

COUNTY Seneca DATE 10-1-68

Mosser _____

S. R. 4 WEATHER Fair

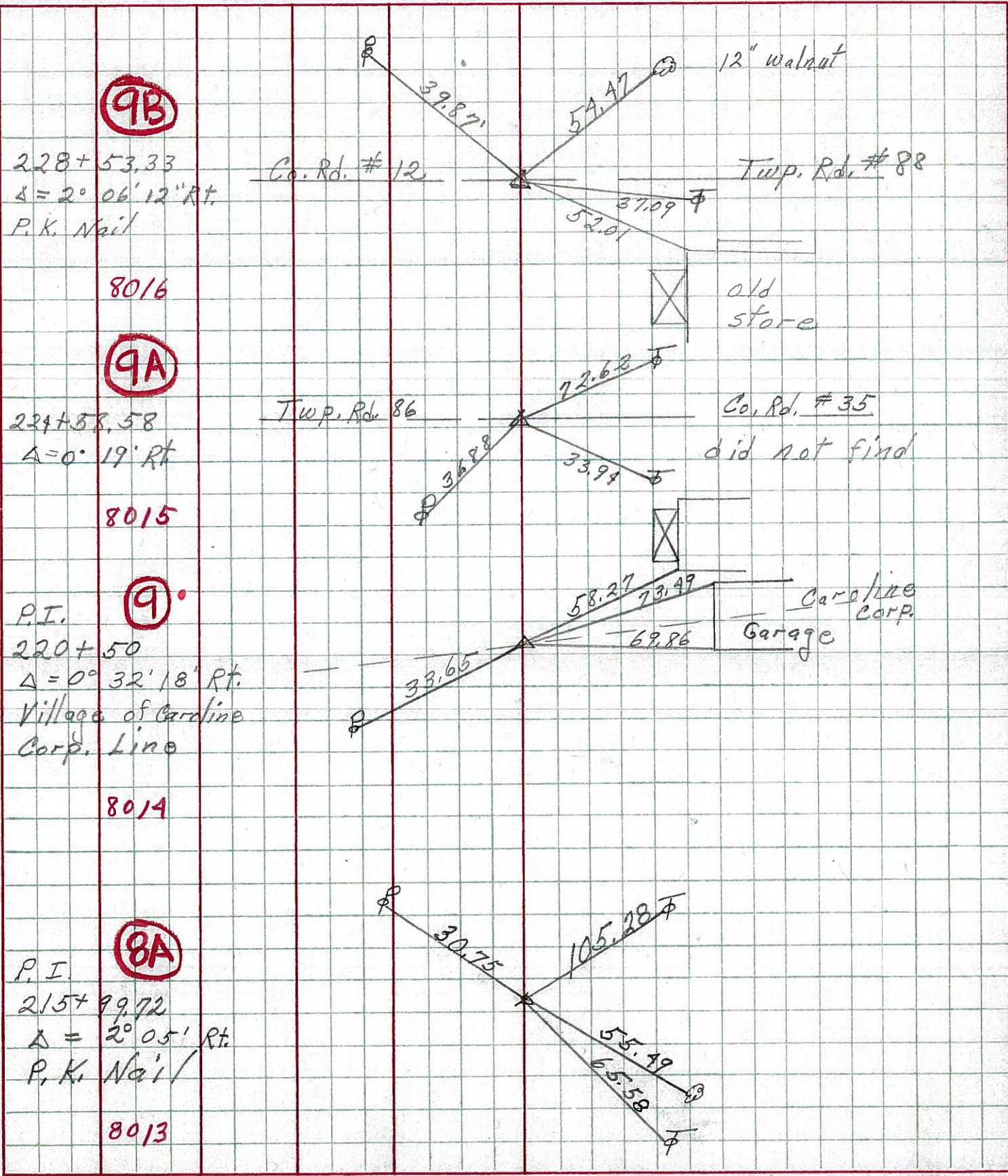
Barbour _____

SEC. _____ TEMP 70°

Redding _____

DESCRIPTION Ties for Control Points JOB NO. _____

LEFT CENTER LINE RIGHT



9B

228 + 53.33
Δ = 2° 06' 12" Rt.
P.K. Nail

8016

9A

224 + 58.58
Δ = 0° 19' Rt.

8015

9

P.I.
220 + 50
Δ = 0° 32' 18" Rt.
Village of Caroline
Corp. Line

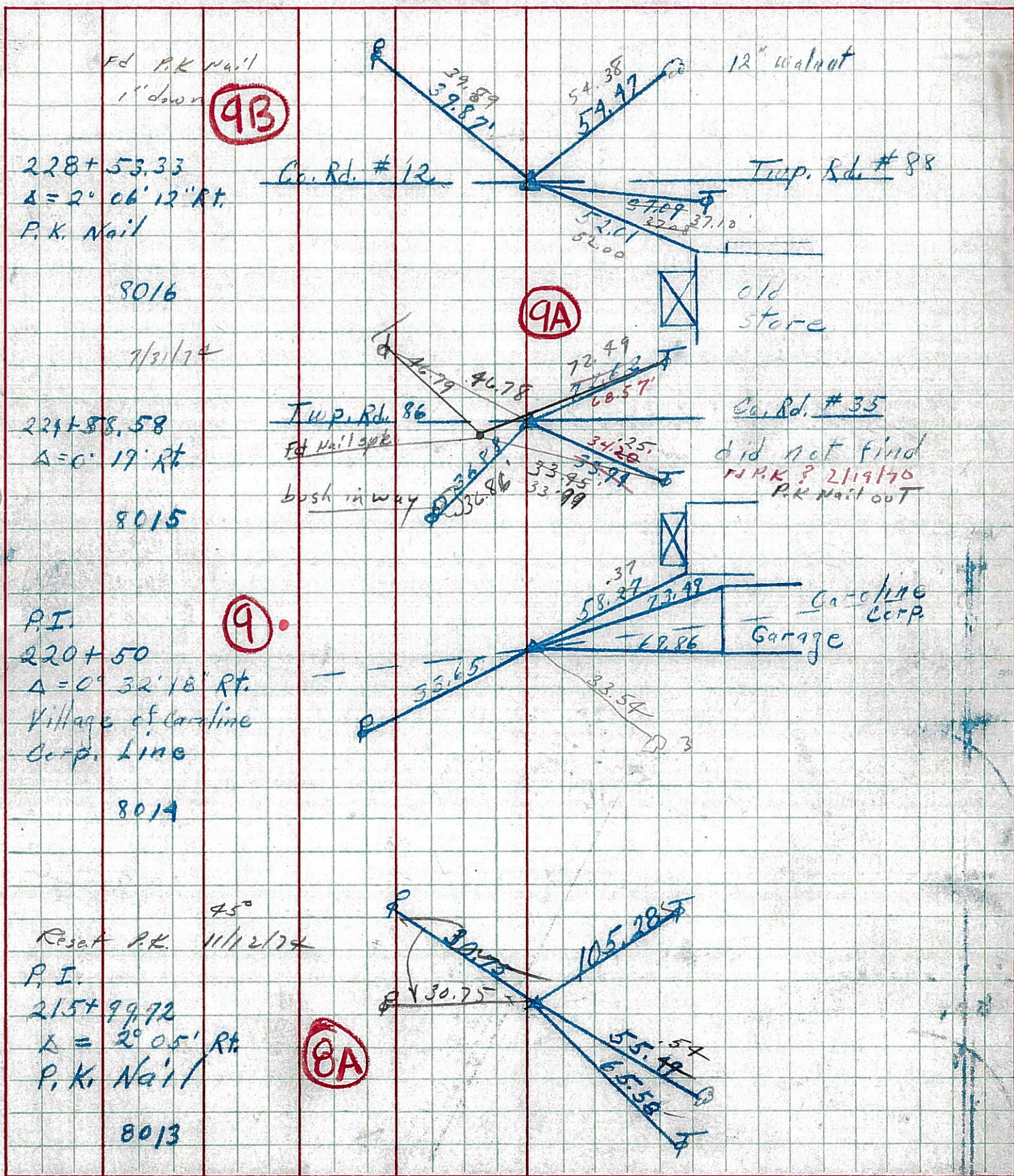
8014

8A

P.I.
215 + 99.72
Δ = 2° 05' Rt.
P.K. Nail

8013

PERSONNEL TITLE PERSONNEL TITLE COUNTY Seneca DATE 10-1-68
Schneider Potts
Musser S. R. 1 WEATHER Fair
Barbour SEC. _____ TEMP. 70°
Redding DESCRIPTION Ties for Control Points JOB NO. _____



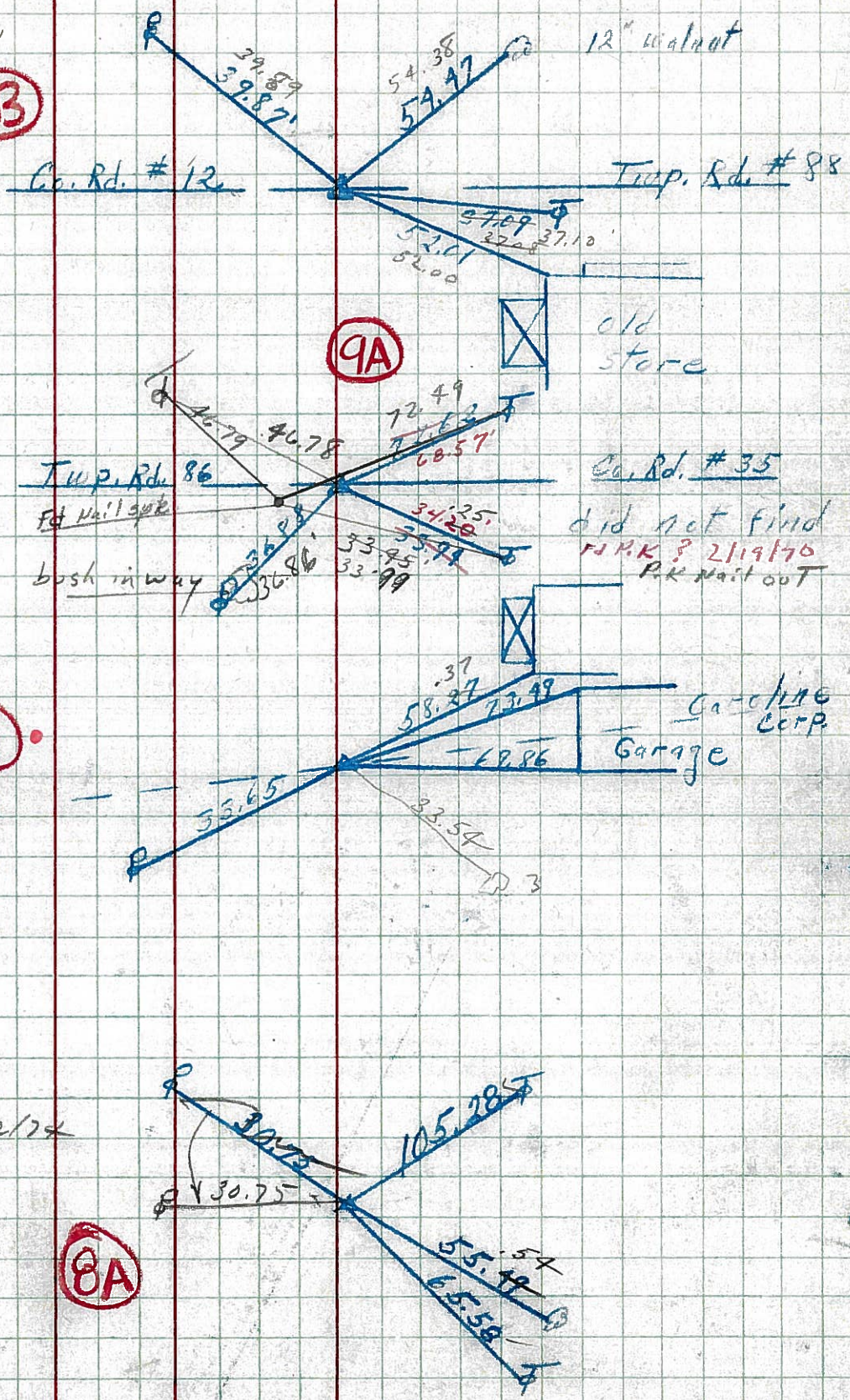
FD P.K. Nail
1" down
(9B)
228+53.33
 $\Delta = 2^\circ 06' 12''$ Rt.
P.K. Nail

8016
7/31/74

221+88.58
 $\Delta = 0^\circ 19'$ Rt.
8015

P.I. **(9)**
220+50
 $\Delta = 0^\circ 32' 18''$ Rt.
Village of Caroline
Corp. Line
8014

Reset P.K. 11/12/74
P.I. **(8A)**
215+99.72
 $\Delta = 2^\circ 05'$ Rt.
P.K. Nail
8013



21800
300

PERSONNEL	TITLE	PERSONNEL	TITLE	COUNTY	DATE
KraBill				Seneca	
Kowaleski				S. R. 4	WEATHER
Brooks				SEC.	TEMP.

DESCRIPTION	LEFT	CENTER LINE	RIGHT	JOB NO.
-------------	------	-------------	-------	---------

