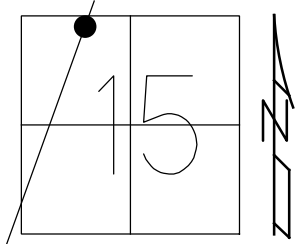


O.D.O.T. DISTRICT 2 SURVEY OFFICE (USE ONLY)

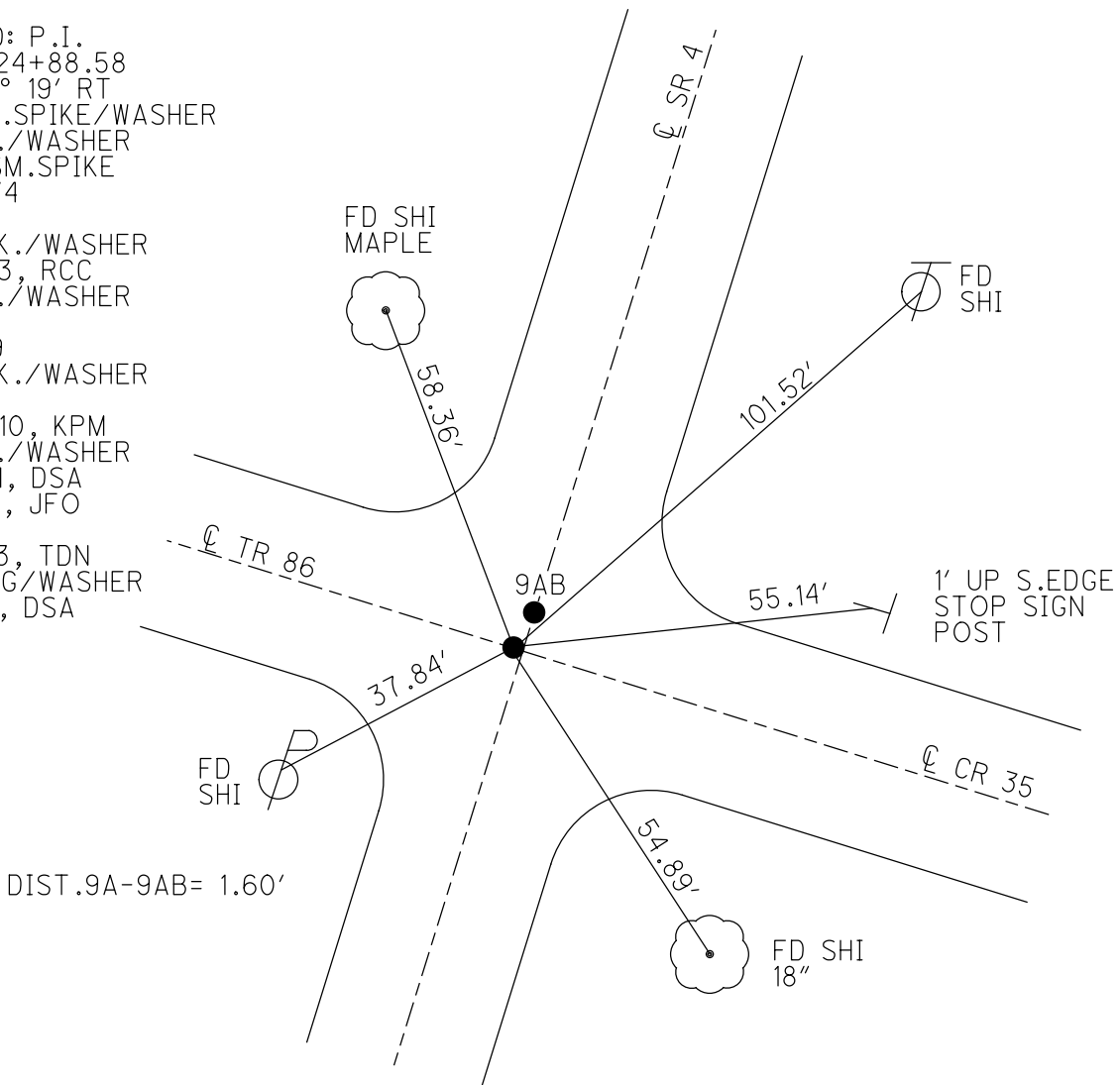
PERSONNEL _____ REFERENCE NO. 9 A SHEET 16 OF 56
 NOTES RHOADES DATE 11/1/23 ROUTE SR 4
 H.C. AUBLE WEATHER SUNNY COUNTY SENECA
 R.C. MILLER TEMP. 36° TOWNSHIP VENICE
 DWG BY RHOADES PID 101241 SECTION 15
 T 1 N R 17 E

TYPE MONUMENT MAG/WASHER
 ON SURFACE - ~~BELOW~~ ON
 OFFSET Q PAVEMENT 1.5' LT : ~~RT~~
9.0' TO LT EDGE PAVEMENT
 STATION: 224+53.64



HORZ.DATUM: NAD83(2011) GEOID: NAVD88 2018
 GRID: NORTHING: 504699.507 EASTING: 1859813.310

RECORD: P.I.
 STA. 224+88.58
 $\Delta = 00^\circ 19' RT$
 SET SM.SPIKE/WASHER
 FD P.K./WASHER
 ATOP SM.SPIKE
 12/18/74
 D.N.F.
 SET P.K./WASHER
 10/7/93, RCC
 FD P.K./WASHER
 SV114
 9/3/09
 SET P.K./WASHER
 FIN 114
 10/20/10, KPM
 FD P.K./WASHER
 9/15/21, DSA
 2/8/22, JFO
 REF9A
 7/17/23, TDN
 SET MAG/WASHER
 11/1/23, DSA



O.D.O.T. DISTRICT 2 SURVEY OFFICE (USE ONLY)

PERSONNEL _____

REFERENCE NO. 9 A

SHEET 16 OF 41

NOTES NIESE

DATE 9/15/21

ROUTE SR 4

H.C. AUBLE

WEATHER OVERCAST

COUNTY SENECA

R.C. NIESE

TEMP. 66°

TOWNSHIP VENICE

SECTION 15

DWG BY RHOADES

PID PVTRAIN

T 1 N R 17 E

TYPE MONUMENT P.K./WASHER

ON SURFACE - ~~BELOW~~ ON

OFFSET 9.0' TO LT EDGE PAVEMENT LT : RT

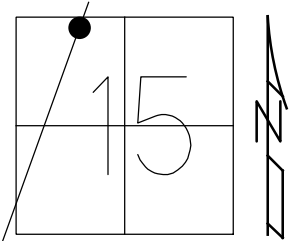
STATION: 224+53.64

HORZ.DATUM: NAD83(2011)

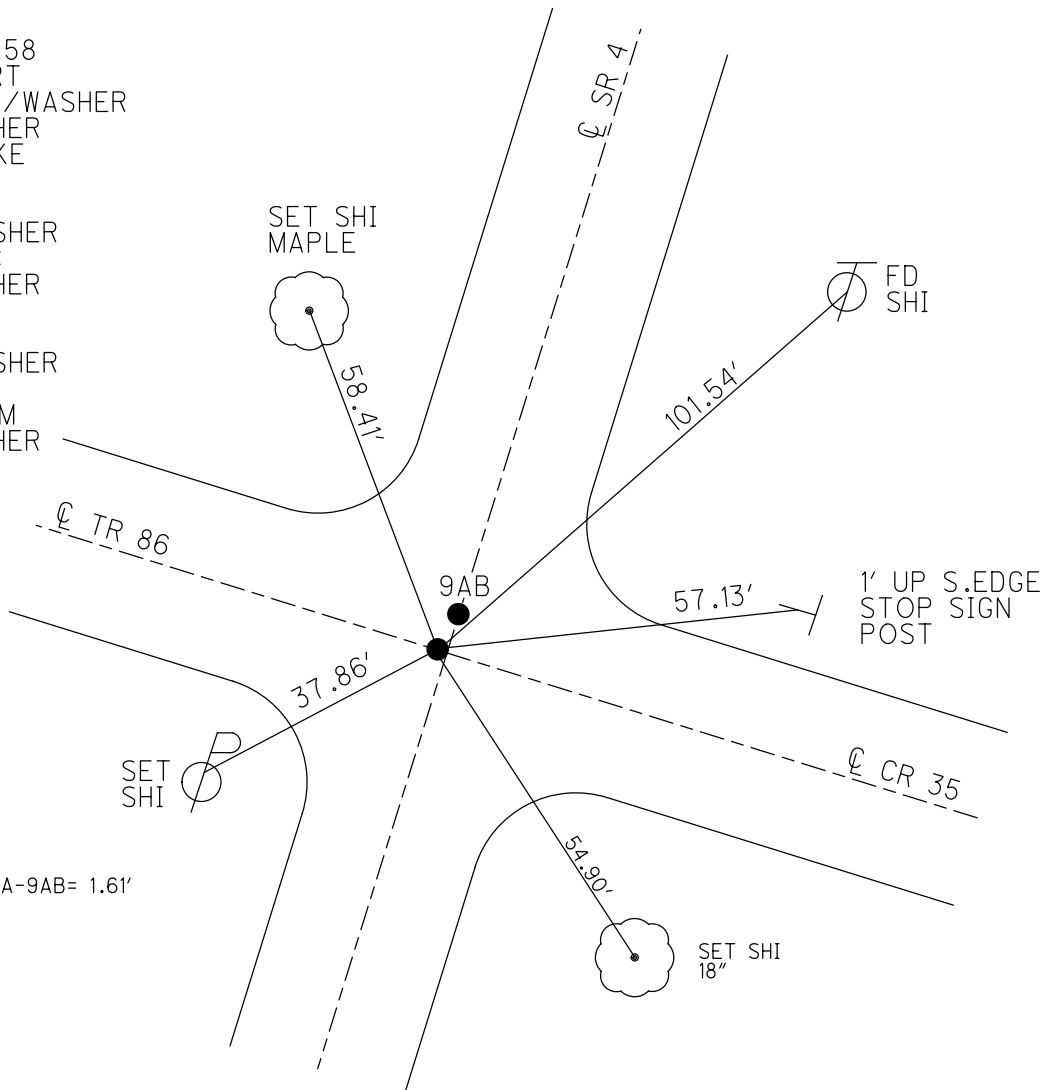
GEOID: NAVD88 2012A

GRID: NORTHING: 504699.507

EASTING: 1859813.310



RECORD: P.I.
 STA. 224+88.58
 $\Delta = 00^\circ 19' RT$
 SET SM.SPIKE/WASHER
 FD P.K./WASHER
 ATOP SM.SPIKE
 12/18/74
 D.N.F.
 SET P.K./WASHER
 10/7/93, RCC
 FD P.K./WASHER
 SV114
 9/3/09
 SET P.K./WASHER
 FIN 114
 10/20/10, KPM
 FD P.K./WASHER
 9/15/21, DSA
 2/8/22, JFO

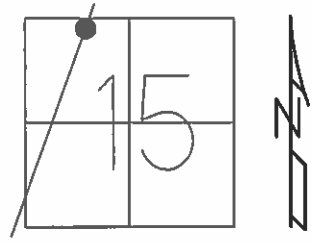


O.D.O.T. DISTRICT 2 SURVEY OFFICE (USE ONLY)

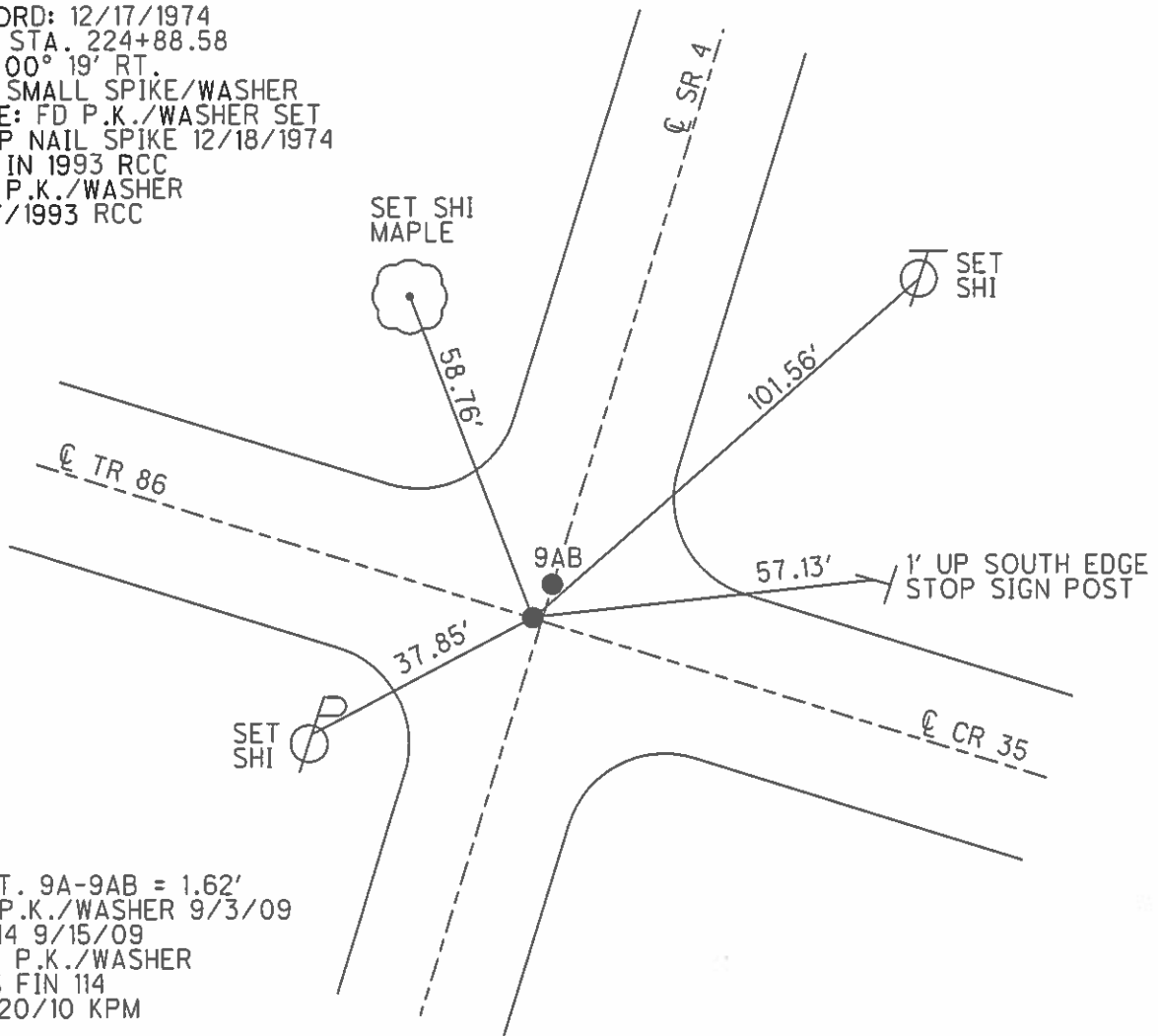
PERSONNEL	REFERENCE NO.	9 A	SHEET	16	OF	41
NOTES	DATE	8/11/10	ROUTE	SR 4		
H.C.	WEATHER	CLOUDY	COUNTY	SENECA		
R.C.	TEMP.	90°	TOWNSHIP	VENICE		
			SECTION	15		
			T	1	N	R
						17 E

TYPE MONUMENT P.K./WASHER
 ON SURFACE - ~~BELOW~~ ON
 LEFT - ☉ PAV'T - ~~RIGHT~~ 1'
9.0' TO LT EDGE PAVEMENT
 S.L.M. 224+53.64

GRID: NORTHING: 504699.507 EASTING: 1859813.310



RECORD: 12/17/1974
 P.I. STA. 224+88.58
 $\Delta = 00^\circ 19' \text{ RT.}$
 SET SMALL SPIKE/WASHER
 NOTE: FD P.K./WASHER SET
 ATOP NAIL SPIKE 12/18/1974
 DNF IN 1993 RCC
 SET P.K./WASHER
 10/7/1993 RCC



DIST. 9A-9AB = 1.62'
 FD P.K./WASHER 9/3/09
 SV114 9/15/09
 SET P.K./WASHER
 GPS FIN 114
 10/20/10 KPM

O.D.O.T. DISTRICT 2 SURVEY OFFICE

PERSONNEL

REFERENCE NO. 9-A

SHEET 15 OF 50

NOTES CHEWY

H.C. RIPPLE

R.C. BARBOUR

GEYMAN

DATE 7-26-1993

WEATHER FAIR

TEMP. 90°

ROUTE SR. #4

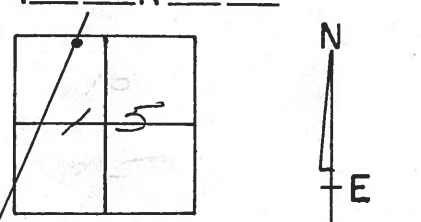
COUNTY SENECA

TOWNSHIP VENICE

SECTION 15

TIN RITE

TYPE MONUMENT "A" PK/WASHER
"B" PK. NAIL
 ON SURFACE - BELOW ON
 LEFT - PAV'T. - RIGHT "0.5 LT."
"1" 10" LT." "8" ON
"B" 10.5" LT." TO EDGE PAVEMENT
 S.L.M. "A" 225+08

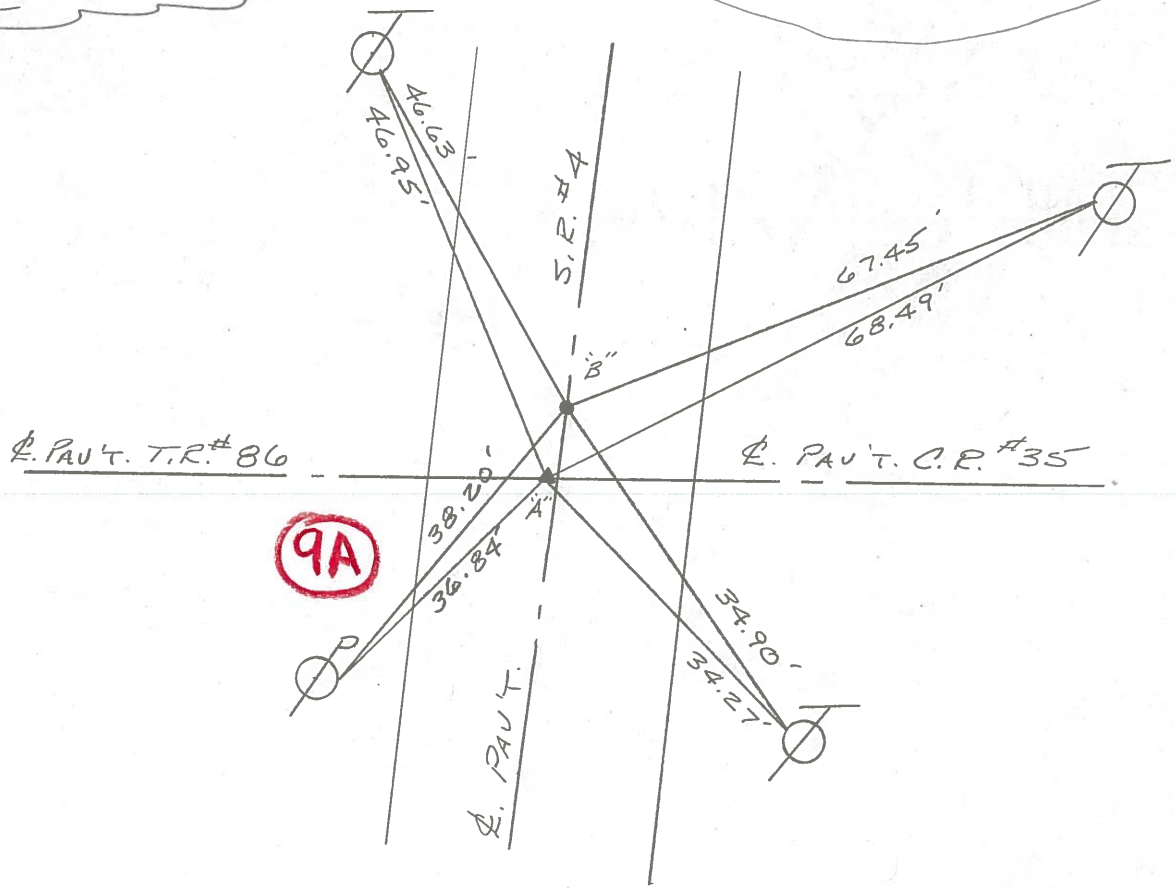


RECORD: 12-17-1974 "A"
 P.I. STA. 224+88.58
 $\Delta = 00^{\circ} 19' R$
 SET SMALL SPK/WASHER

SET PK'S/WASHERS
 10-7-1993
 REC

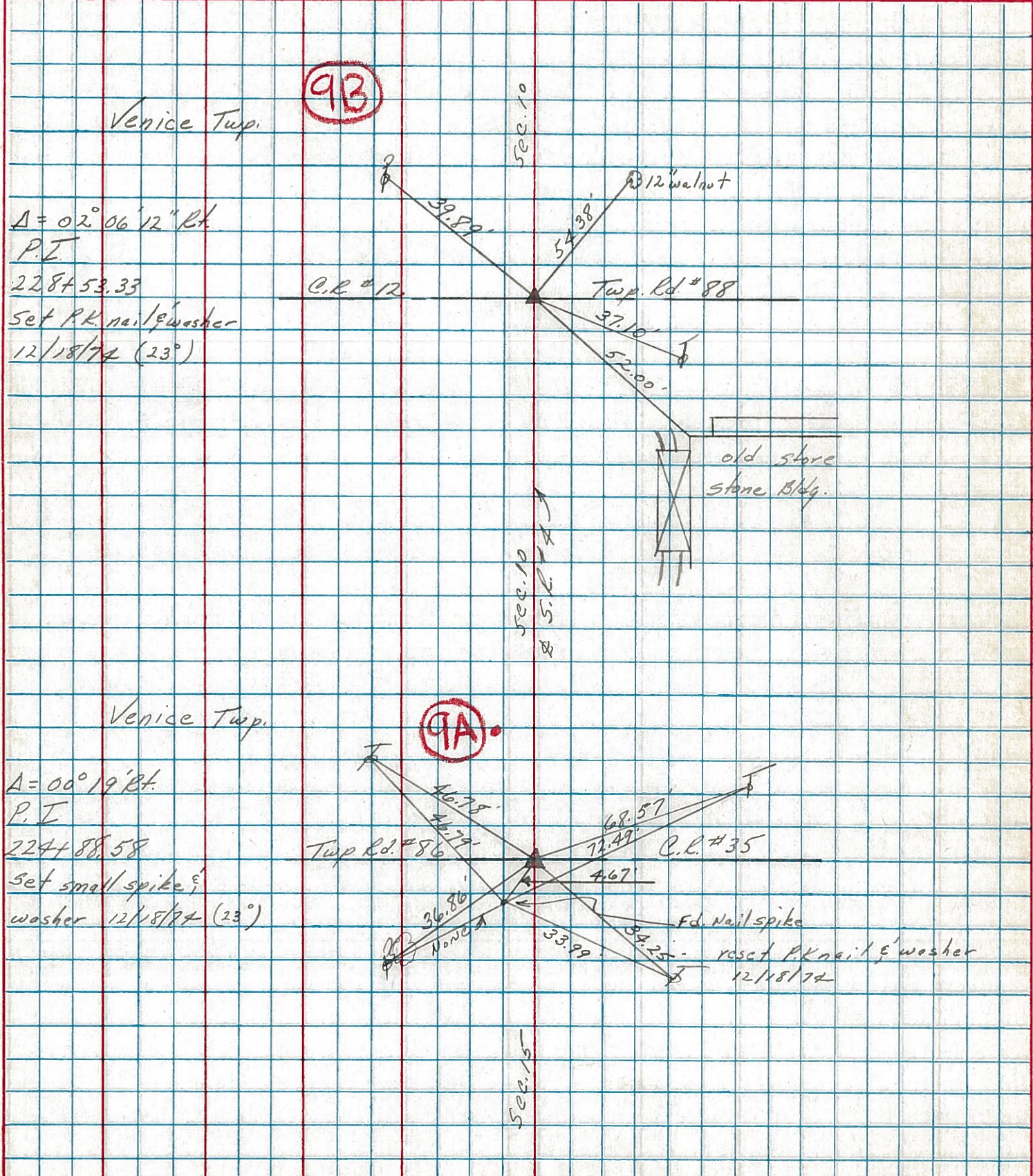
1.60'(M) BETWEEN
 PTS. "A" & "B"

*NOTE: PK/WASHER SET
 12-18-1974 ATOP FD.
 NAIL SPIKE.
 DID NOT FIND IN 1993.
 REC



PERSONNEL	TITLE	PERSONNEL	TITLE	COUNTY	DATE
Cronin		Schneider		Seneca	12/17/74
Ash		Mosser		S. R. #4	WEATHER overcast-snow
Ripple		Barbour		SEC. Crawford Co. Line - North	TEMP. 32°
Geyman					

DESCRIPTION Ties for Control Points JOB NO. _____



PERSONNEL TITLE PERSONNEL TITLE
 Schneider _____ Potts _____
 Mosser _____
 Barbour _____
 Redding _____

COUNTY Seneca DATE 10-1-68

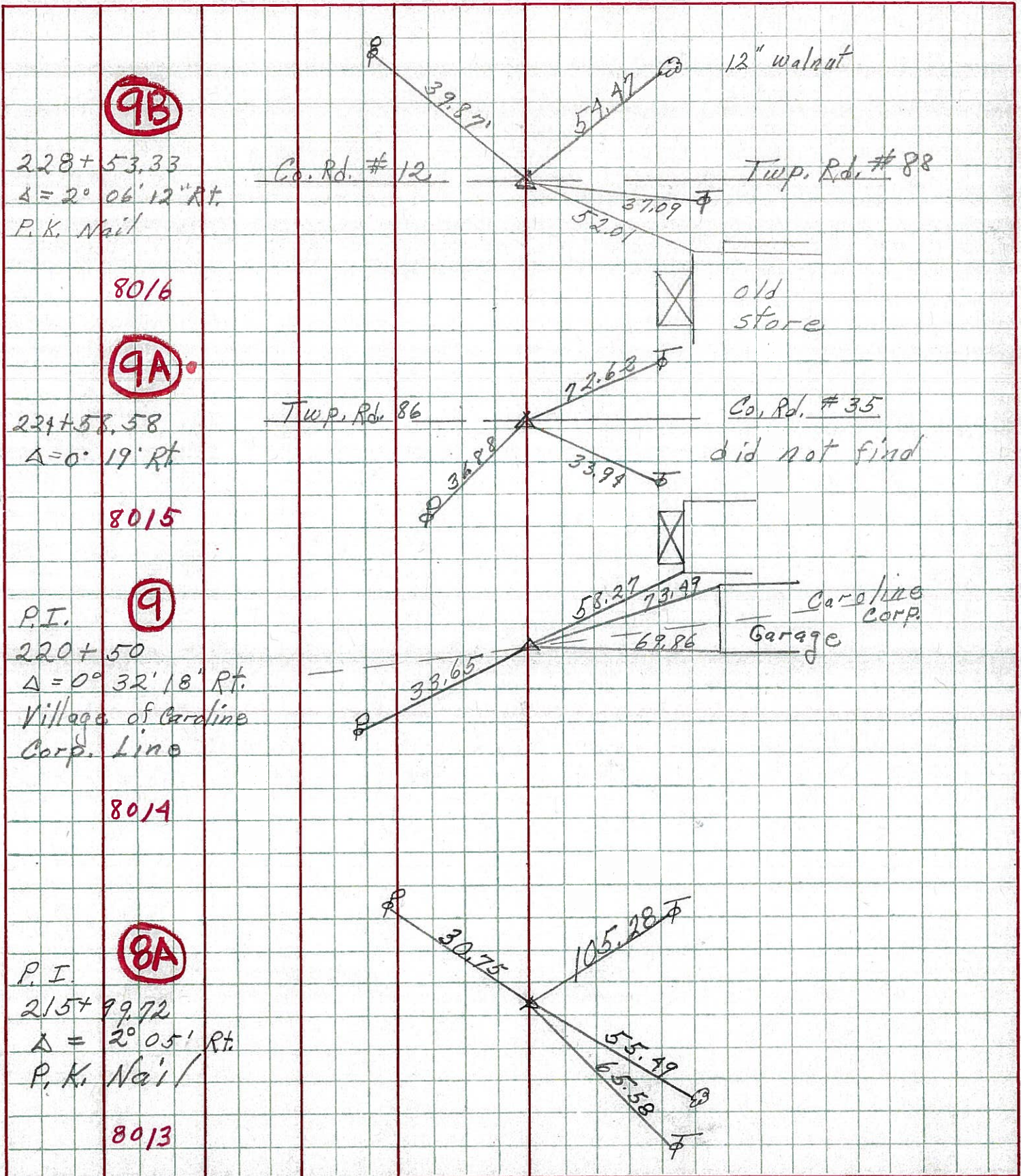
S. R. 4 WEATHER Fair

SEC. _____ TEMP. 70°

DESCRIPTION Ties for Control Points

JOB NO. _____

LEFT CENTER LINE RIGHT



9B

228 + 53.33
 $\Delta = 2^{\circ} 06' 12''$ Rt.
 P.K. Nail

8016

9A

224 + 58.58
 $\Delta = 0^{\circ} 19'$ Rt.

8015

9

P.I.
 220 + 50
 $\Delta = 0^{\circ} 32' 18''$ Rt.
 Village of Caroline
 Corp. Line

8014

8A

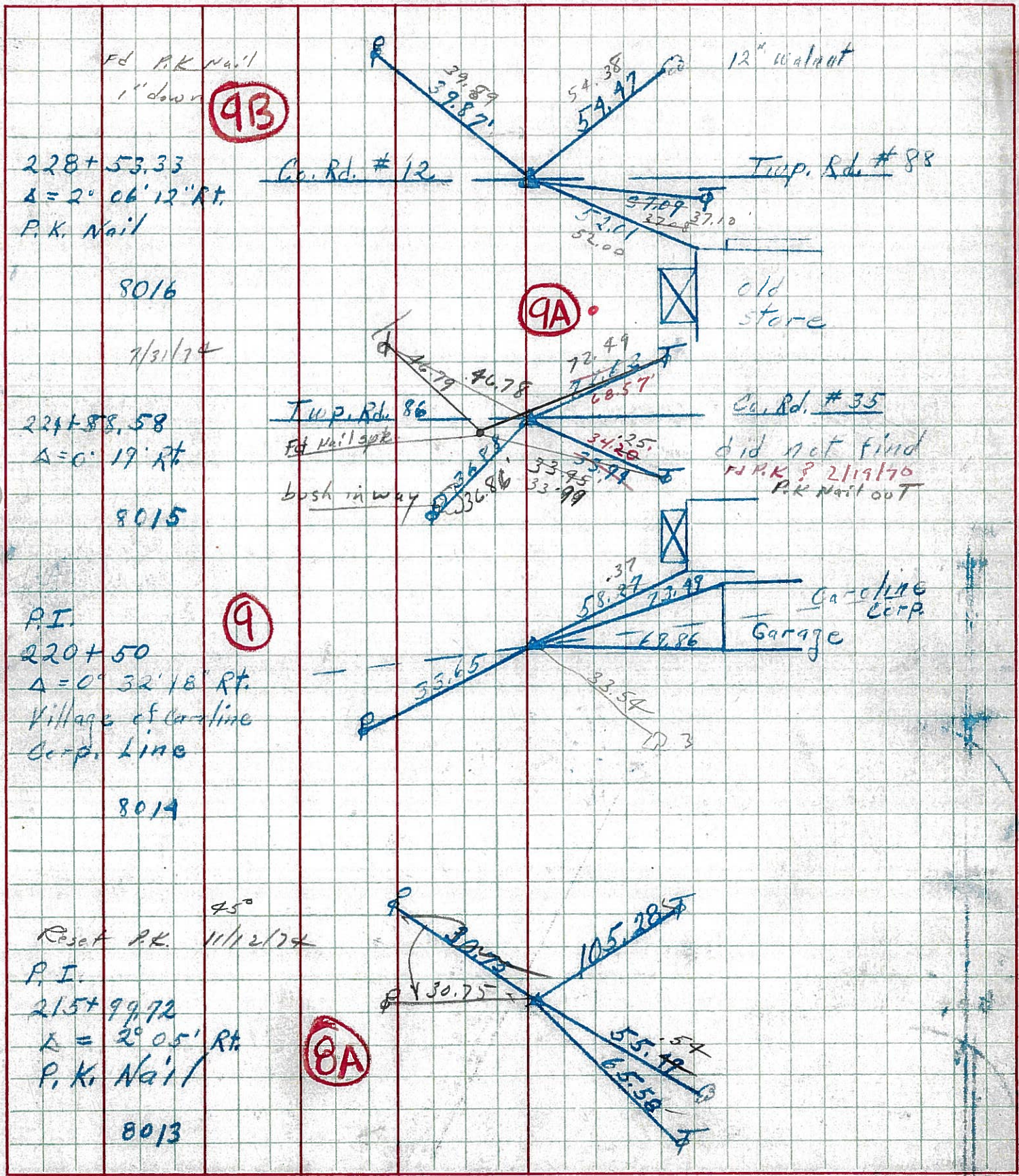
P.I.
 215 + 99.72
 $\Delta = 2^{\circ} 05'$ Rt.
 P.K. Nail

8013

PERSONNEL TITLE PERSONNEL TITLE
 Schneider Potts
 Musser
 Barbour
 Redding

COUNTY Seneca DATE 10-1-68
 S. R. 4 WEATHER Fair
 SEC. _____ TEMP. 70°

DESCRIPTION Ties for Control Points JOB NO. _____



PERSONNEL TITLE PERSONNEL TITLE

COUNTY Seneca

DATE

KraBill
Kowaleski
Brooks

S. R. 4

WEATHER

SEC.

TEMP.

DESCRIPTION

LEFT

CENTER LINE

RIGHT

JOB NO.

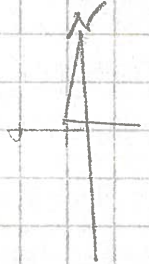
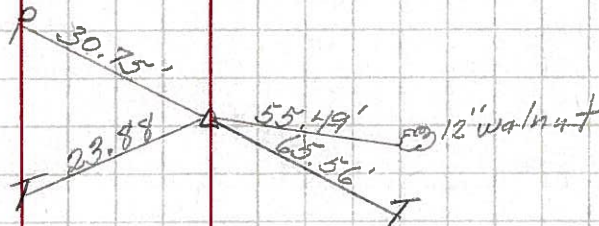
215+99.72

P.I. $\Delta = 2^{\circ} - 05' - 00''$ RT

P.k. nail

8A

1-17-64



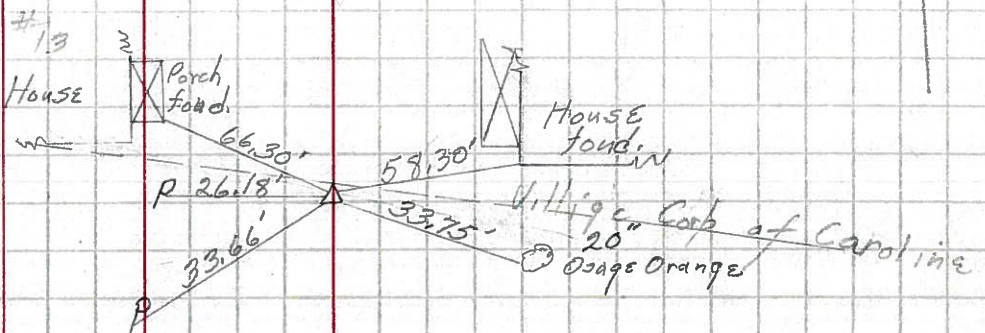
220+50

P.I. $\Delta = 0^{\circ} - 32' - 18''$ RT

P.k. nail

9

1-17-64



224+58.58

P.I. $\Delta = 0^{\circ} - 19' - 00''$ RT

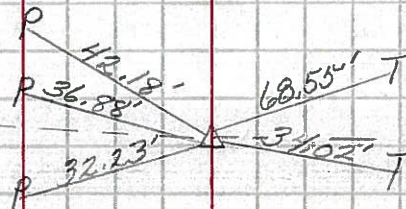
P.k. nail

9A

Twp Rd #86

Co. Rd #35

1-17-64



228+53.33

P.I. $\Delta = 2^{\circ} - 06' - 12''$ RT

P.k. nail

9B

Co. Rd #12

